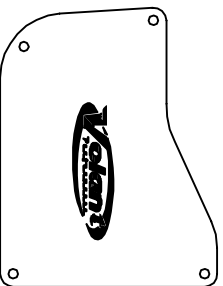
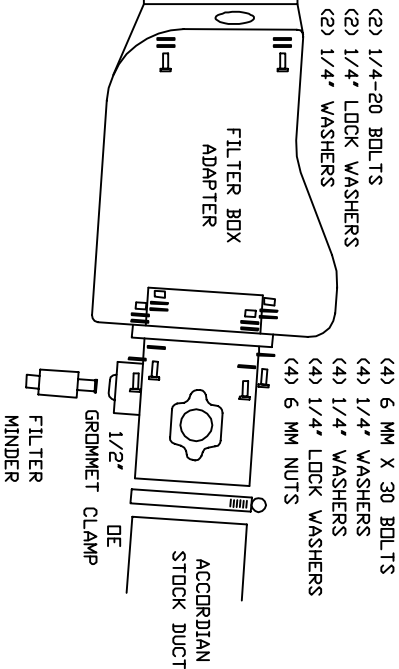
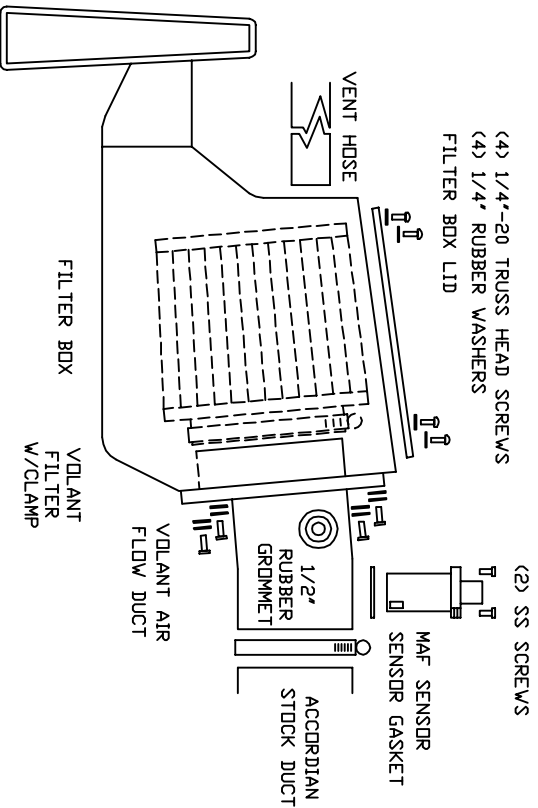
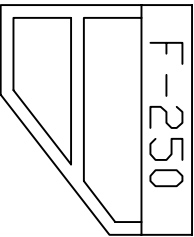
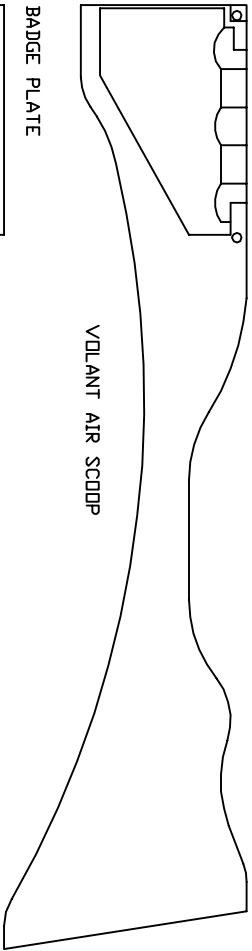


VOLANT COOL AIR INTAKES  
 PART NO.: 19864  
 INSTALLATION INSTRUCTIONS  
 WWW.VOLANT.COM  
 TECH SUPPORT: (909) 481-3888

19864 PARTS LIST		1	1	1
1	VOLANT FILTER BOX	1	1/2" GROMMET	
1	VOLANT FILTER BOX LID	2	1/4"-20 BOLTS	
1	VOLANT AIR FLOW DUCT	4	6 MM X 30 BOLTS	
1	VOLANT AIR SCOOP	10	1/4" WASHERS	
1	VOLANT FILTER W/CLAMP	6	1/4" LOCK WASHERS	
4	1/4"-20 TRUSS HEAD SCREWS	4	6 MM NUTS	
4	1/4" RUBBER WASHERS	2	STAINLESS STEEL SCREWS	





Volant Performance  
 Rancho Cucamonga, CA 91730  
 (909) 481-3888 Tech Support  
 (909) 476-1491 Fax  
 www.volant.com

**READ INSTRUCTIONS THOROUGHLY BEFORE DISASSEMBLING. DO NOT SKIP ANY STEPS. ANY QUESTIONS ON A VOLANT KIT MAY BE REFERRED TO OUR TECH SUPPORT LINE AT (909) 481-3888 OR VISIT OUR WEBSITE AT WWW.VOLANT.COM**

**INSTALLATION INSTRUCTIONS PART NO. 19864**

**Installation Instructions:**

1. Disconnect negative battery cable on driver's side.
2. Disconnect negative battery cable on passenger side.
3. Loosen clamp that holds the duct to the factory air box.
4. Remove filter minder from stock air box by pulling straight out.
5. Unclip factory MAF.
6. Pull up on rear of stock air box disconnecting duct from box.
7. Remove vent hose from front of air box.
8. Remove stock air box by pulling up and out.
9. Remove inner wheel completely.
10. Remove ducting from inner wheel well \*note there are two tree rivets and a bracket. holding ducting in make sure to use caution when pulling ducting out not to tare washer bottle.
11. Remove fender emblem from fender by unclipping from the inside.
12. Place Volant box into factory position.
13. Insert breather hose into hose in the front of the air box.
14. Slide factory duct over volant duct and tighten clamp.
15. Press filter minder into 1/2 rubber grommet in volant duct.
16. Unscrew factory MAF with torques bit provided remove from duct.
17. Place MAF gasket onto MAF.
18. Install MAF into Volant duct tighten with 2 self taping screws provided.
19. Clip harness into MAF.
20. Place Volant ram air duct into wheel well.
21. Tighten duct to box with 2 1/4x20 bolts washer and lock washers.
22. Clip badge back into fender.
23. Make sure everything is clear and sits properly.
24. Reinstall wheel well.
25. Attach filter to duct tighten clamp.
26. Attach volant lid to volant box.
27. Reinstall battery cables and check all connections.

**WARNING: OVER TIGHTENING HARDWARE MAY ALTAR THE INTEGRITY OF THE VOLANT AIR INTAKE SYSTEM.**

**BEFORE ROAD TESTING**

1. Start engine, leaving the transmission in park and securing the parking brake.
2. Make sure to look and listen for any unusual noises or air leaks. Repair problems if needed.
3. Once completed it will be necessary to check periodically for realignment and tightening of all connections.
4. Once all tests are completed, enjoy the performance of your new Volant Air Intake System.

**CARE AND CLEANING**

Check the cotton reusable filter periodically and remove any excessive dirt build-up by tapping the filter on the ground and brushing off the loosened dirt. Clean the filter by using Volant's Filter Recharger Kit. Volant's Filter Recharger Kit is designed to restore original air flow. Re-oil every 10,000 miles without cleaning to improve filtering in sand and dirt. Clean only when dirt is very excessive or 50,000 miles.

**RECOMMENDED SERVICE PARTS**

RECOMMENDED SERVICE PARTS	PART NO.
POWERCORE FILTER UPGRADE	61503
COTTON FILTER REPLACEMENT	5152
PREFILTER	51905
CLEANING KIT	5100

**APPLICATION GUIDE**

MY	MAKE	MODEL	ENG.
08-10	FORD	F-250	6.4L
08-10	FORD	F-350	6.4L
08-10	FORD	F-450	6.4L

**INSTALL**

