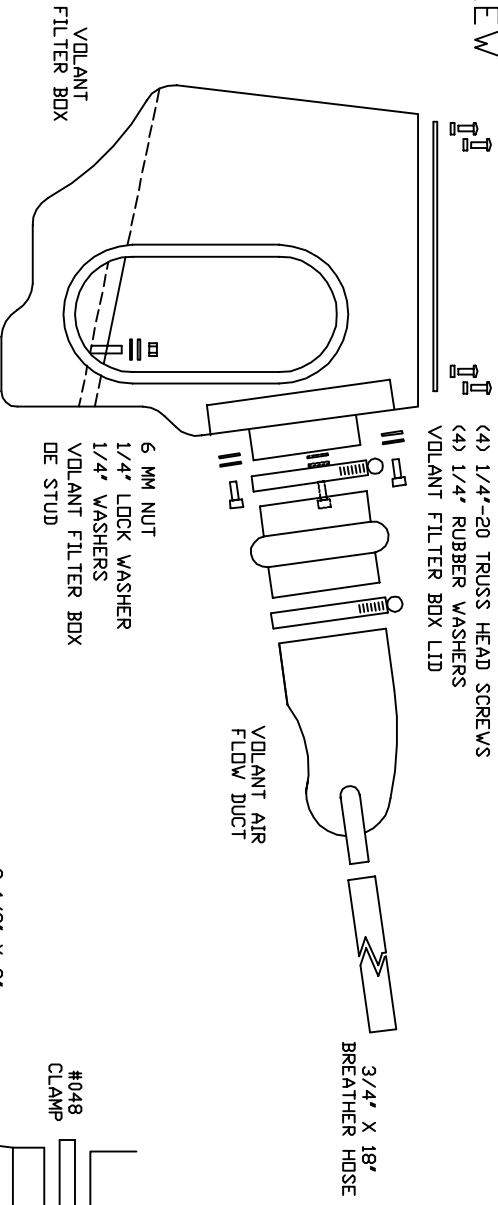


VOLANT COOL AIR INTAKES  
 PART NO.: 168406  
 INSTALLATION INSTRUCTIONS  
 WWW.VOLANT.COM  
 TECH SUPPORT: (909) 481-3888

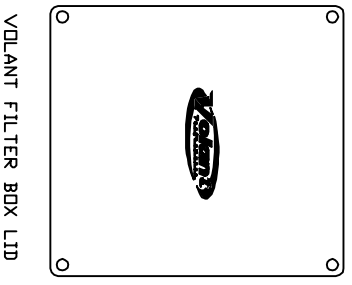
168406 PARTS LIST					
1	VOLANT FILTER BOX	2	#056 CLAMPS	4	1/4" RUBBER WASHERS
1	VOLANT FILTER BOX LID	1	3 1/2" X 3' HUMPH HOSE	1	1/2" RUBBER GROMMET
1	VOLANT AIR FLOW DUCT	1	3" X 2 3/4" REDUCER	1	3/4" X 18" BREATHER HOSE
1	VOLANT FILTER BOX ADAPTER	3	10/32" SOCKET HEAD SCREW	1	6 MM NUT
1	VOLANT FRONT SCODP	3	10/32" LOCK WASHER	1	1/4" LOCK WASHER
1	POWERCORE FILTER W/CLAMP	4	1/4" WASHERS		
2	#048 CLAMPS	4	1/4"-20 TRUSS HEAD SCREWS		

SIDE VIEW

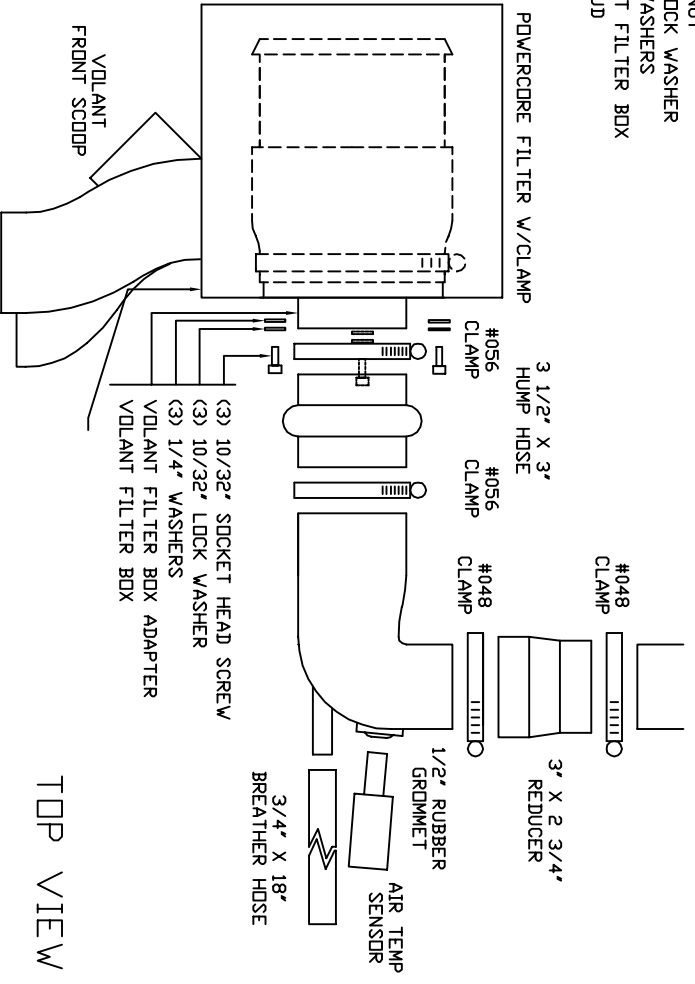


- (4) 1/4"-20 TRUSS HEAD SCREWS
- (4) 1/4" RUBBER WASHERS
- VOLANT FILTER BOX LID

- 6 MM NUT
- 1/4" LOCK WASHER
- 1/4" WASHERS
- VOLANT FILTER BOX
- DE STUD



VOLANT FILTER BOX LID



TOP VIEW





Volant Performance  
 Rancho Cucamonga, CA 91730  
 (909) 481-3888 Tech Support  
 (909) 476-1491 Fax  
 www.volant.com

**READ INSTRUCTIONS THOROUGHLY BEFORE DISASSEMBLING. DO NOT SKIP ANY STEPS. ANY QUESTIONS ON A VOLANT KIT MAY BE REFERRED TO OUR TECH SUPPORT LINE AT (909) 481-3888 OR VISIT OUR WEBSITE AT WWW.VOLANT.COM**

**INSTALLATION INSTRUCTIONS PART NO. 16840**

**Installation Instructions:**

1. Disconnect the negative battery cable
2. Remove the ATS sensor by pulling stright out
3. Loosen the clamps holding the air duct to the throttle body and to the air box remove the duct
4. Disconnect the crankcase breather hose form the engine
5. Pull up on the air box and remove it from the engine compartment
6. Remove the factory air inlet tube by pulling bact to dislodge the tree rivit
7. Place the volant ram scoop into the volant box and install the box into factory position
8. Tighten the box down using the 6mm bolt, lock washer and washer
9. Attach the 3 1/2 hump hose to the filter adapter and tighten with a #56 clamp
10. Press the volant air duct into the open end of the hump hose do not tighten the clamp fully
11. Attavh the 3 to 2 3/4 reducer to the throllte body and tighten the #48 clamp
12. Press the air duct into the reducer and tighten the remaining clamps
13. Press the ATS sensor into the rubber grommet
14. Attach the 3/4 x 18 breather hose onto the volant duct and crank case
15. Attach the volant ram filter to the filter adapter and tighten the clamp
16. Attach the filter box cover and tighten the (4) truss head screws with rubber washers
17. Check all connections and reattach the negative battery cable

**WARNING: OVER TIGHTENING HARDWARE MAY ALTAR THE INTEGRITY OF THE VOLANT AIR INTAKE SYSTEM.**

**BEFORE ROAD TESTING**

1. Start engine, leaving the transmission in park and securing the parking brake.
2. Make sure to look and listen for any unusual noises or air leaks. Repair problems if needed.
3. Once completed it will be necessary to check periodically for realignment and tightening of all connections.
4. Once all tests are completed, enjoy the performance of your new Volant Air Intake System.

**CARE AND CLEANING**

Check the cotton reusable filter periodically and remove any excessive dirt build-up by tapping the filter on the ground and brushing off the loosened dirt. Clean the filter by using Volant's Filter Recharger Kit. Volant's Filter Recharger Kit is designed to restore original air flow. Re-oil every 10,000 miles without cleaning to improve filtering in sand and dirt. Clean only when dirt is very excessive or 50,000 miles.

**RECOMMENDED SERVICE PARTS**

RECOMMENDED SERVICE PARTS	PART NO.
POWERCORE FILTER UPGRADE	61513
REPLACEMENT FILTER	5120
PEFILTER FOR POWERCORE	51920
PERFILTER FOR COTTON FILTER	51914
CLEANING KIT	5100

**APPLICATION GUIDE**

MY	MAKE	MODEL	ENG.
07-09	DODGE	NITRO	4.0L

**INSTALL**

