



ALLINA LIU

Summer / Pre-Fall 23

No Endings, No Goodbyes

Drawing from Liu's perennial inspirations of Regency era corsetry, Dutch portraiture, and the subculture of BDSM, this season aims to explore undergarments as everyday wear.

Lillian Bassman's photography series titled *Lingerie*, was also a catalyst for this collection. The photographers' work is referenced through subtle nods such as garter belt features and hook & eye brassiere closures.

Through these concepts, Liu began incorporating contemporary details into historic silhouettes to create pieces that balance on the edge of art and wearability.

Soba Dress
in neptune



*strap necktie dress with
keyhole, waist ruffle,
and side seam pockets*



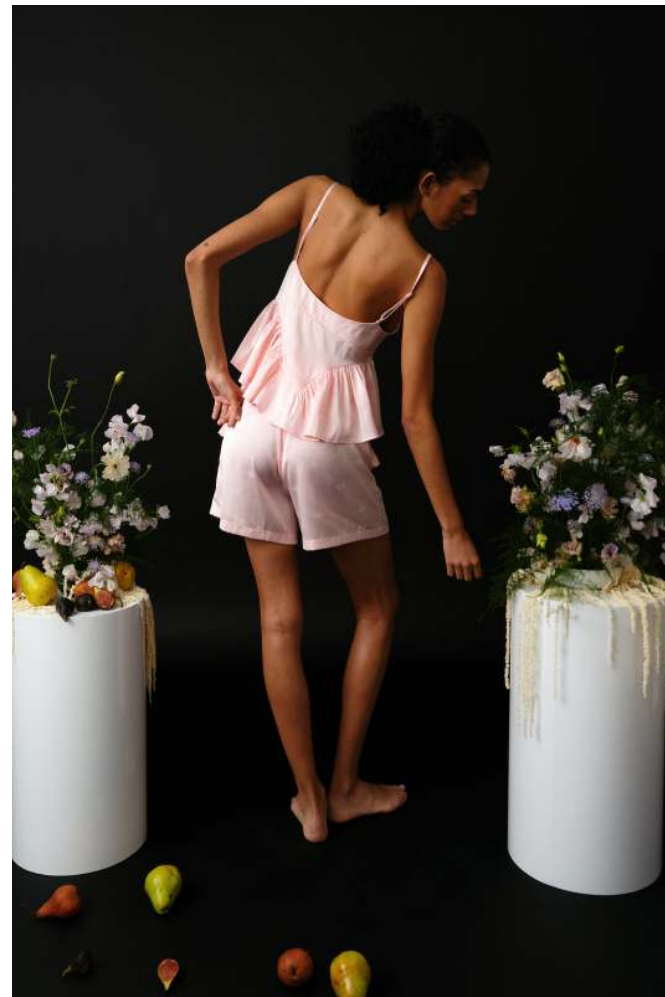


Oyster Top

in onyx

*satin bustier top with boning,
tonal top applied grosgrain,
and button down placket*





Kimura Top

in pointe

*ruffle peplum top with button
down placket and straps with
ring & sliders*

Nolan Shorts

in pointe

*satin large pocket shorts with contrast waistband tie
and center back zipper*



Sol Skirt

in pointe

*asymmetrical cotton skirt with
cutout and ties at thigh*



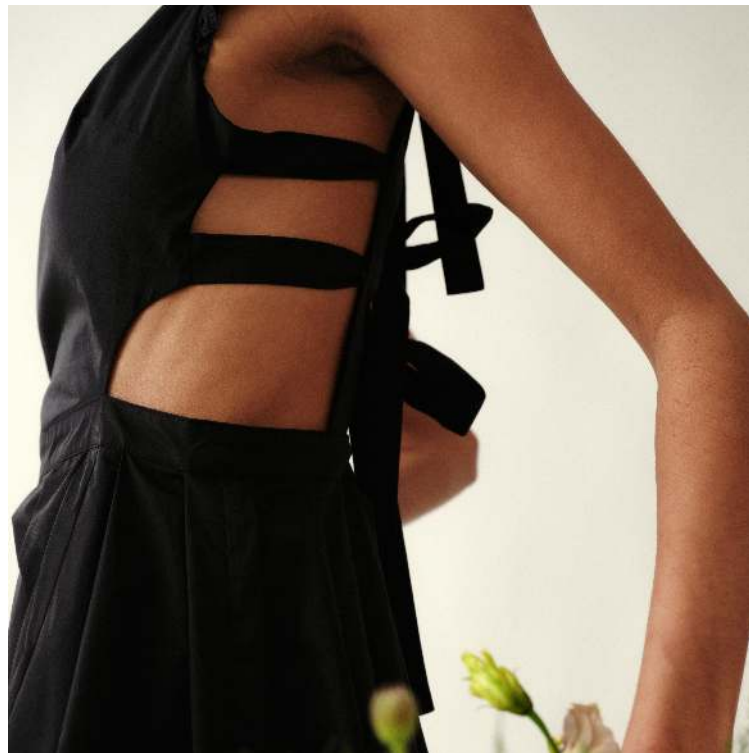
Mooncake Top

in milk

*smocked top with long tie straps and
garter details with ribbon bows*







Panda Dress
in onyx

*cotton apron dress with pleats, leg slit,
cutouts, & strap detailing*



Mooncake Top

in neptune



*smocked top with long tie straps and
garter details with bows*

Uni Skirt

in neptune



*satin mini skirt with
contrast bows*



Frond Skirt

in peri

*cotton custom embroidered skirt with
ruched yoke and waist ruffle*



Sammie Dress

in pointe

*mini satin dress with deep v-neck
and bow tied long shoulder straps*





Oden Top

in vermeer floral

*cotton bustier with smocked back, boning,
and top applied contrast
grosgrain and front zipper*

Shabu Skirt

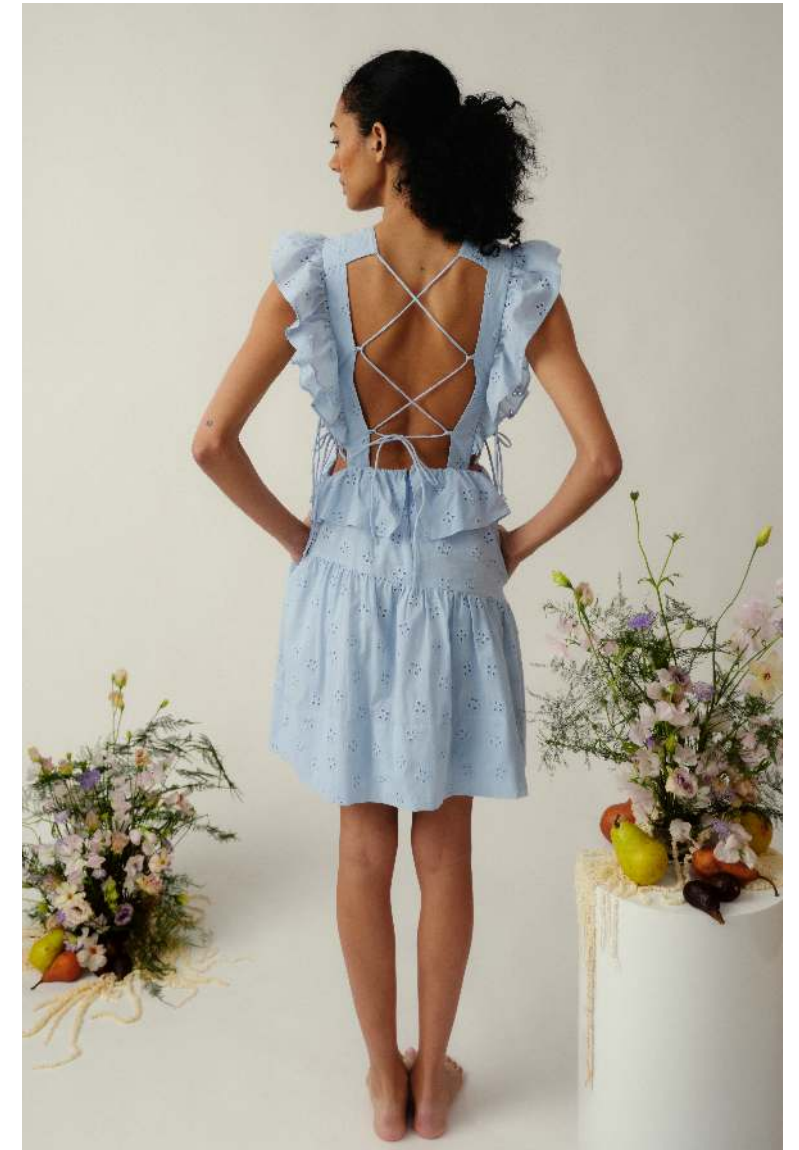
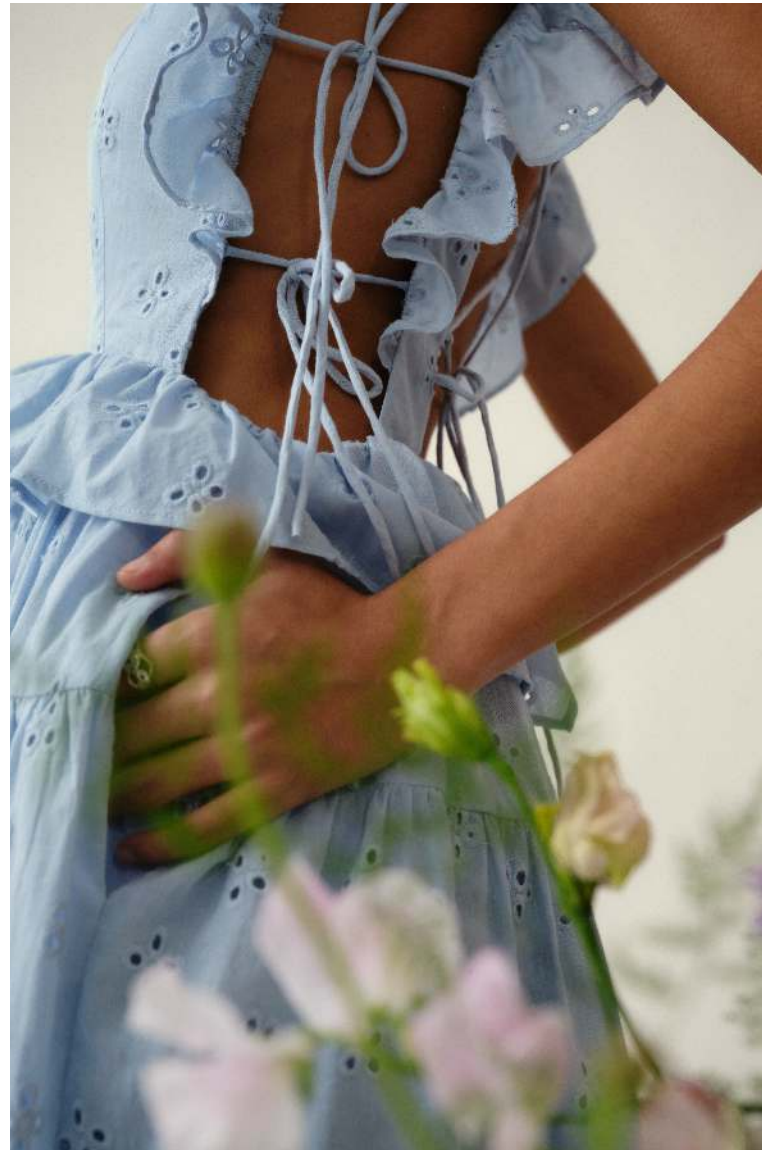
in vermeer floral

*midi combo skirt with cascading ruffles
and elastic waistband*



Shumai Dress

in peri



*cotton embroidered custom eyelet apron dress
with adjustable side ties and lace-up back*



Vale Top
in seaweed salad

*smocked top with straps and
off-shoulder double-tiered sleeves*

Edo Pants
in neptune

*large pocket pants with
wide bendback lace-up detail*



Tamago Dress
in vermeer floral

*cotton dress with ruffle straps, elastic bodice
detail, smocked back, and cutouts with
straps*







Lucky Top

in onyx

*cotton apron top with ruffle sleeves,
adjustable ties at sides, and lace-up back*

Undie Shorts

in onyx

*double-banded shorts with
cutout detail*





Nolan Shorts

in vermeer floral

*cotton large pocket shorts with waistband tie
and center back zipper*

Kimura Top

in vermeer floral

*ruffle peplum top with button
down placket and straps with
ring & sliders*





Sammie Dress

in peri

*cotton embroidered custom eyelet dress
with deep v-neck and long shoulder straps*



Contact Skirt

in onyx

satin maxi skirt with cascading ruffle details



Edo Pants

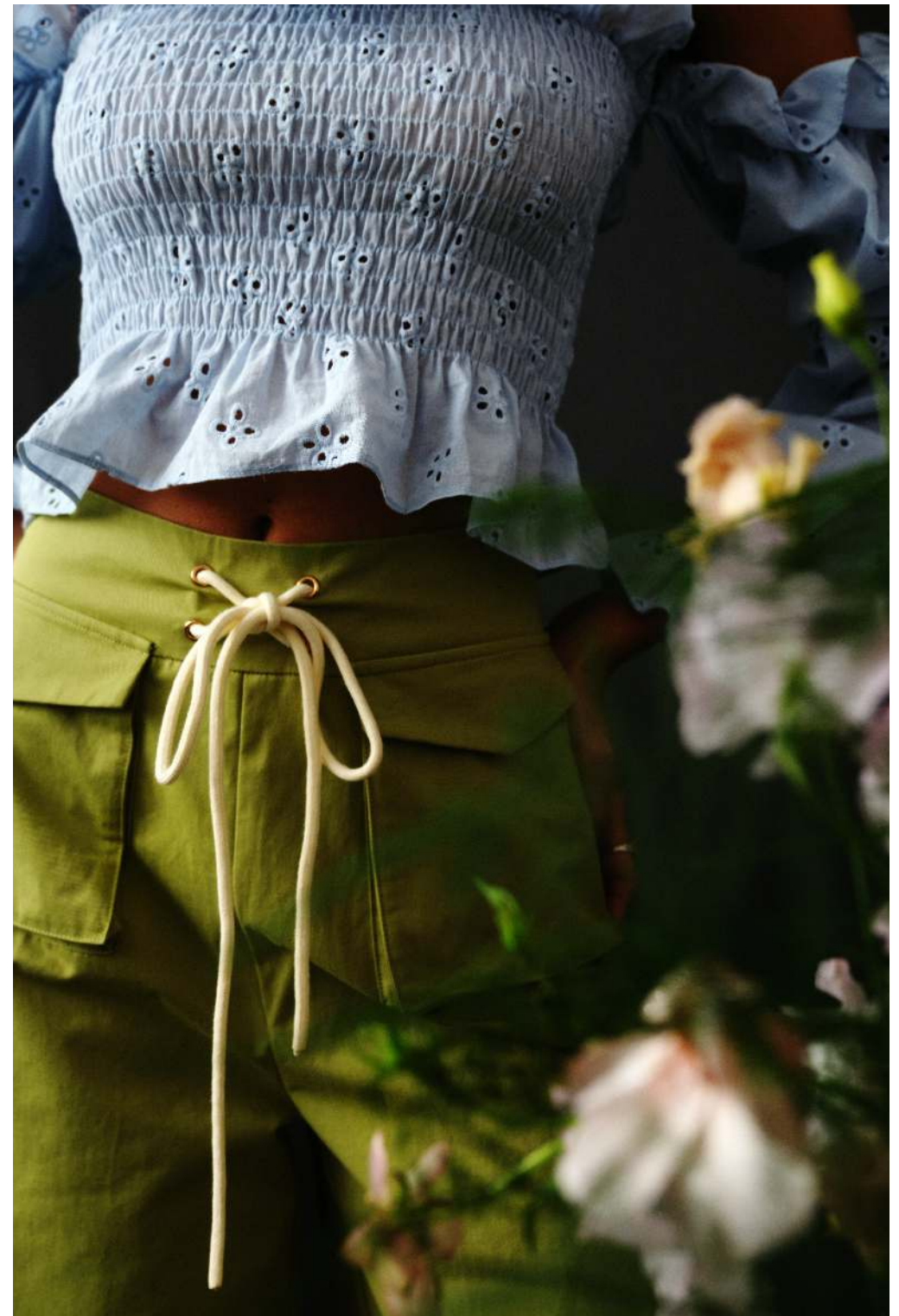
in seaweed salad



*large pocket pants with
lace-up detail*

Vale Top

in peri



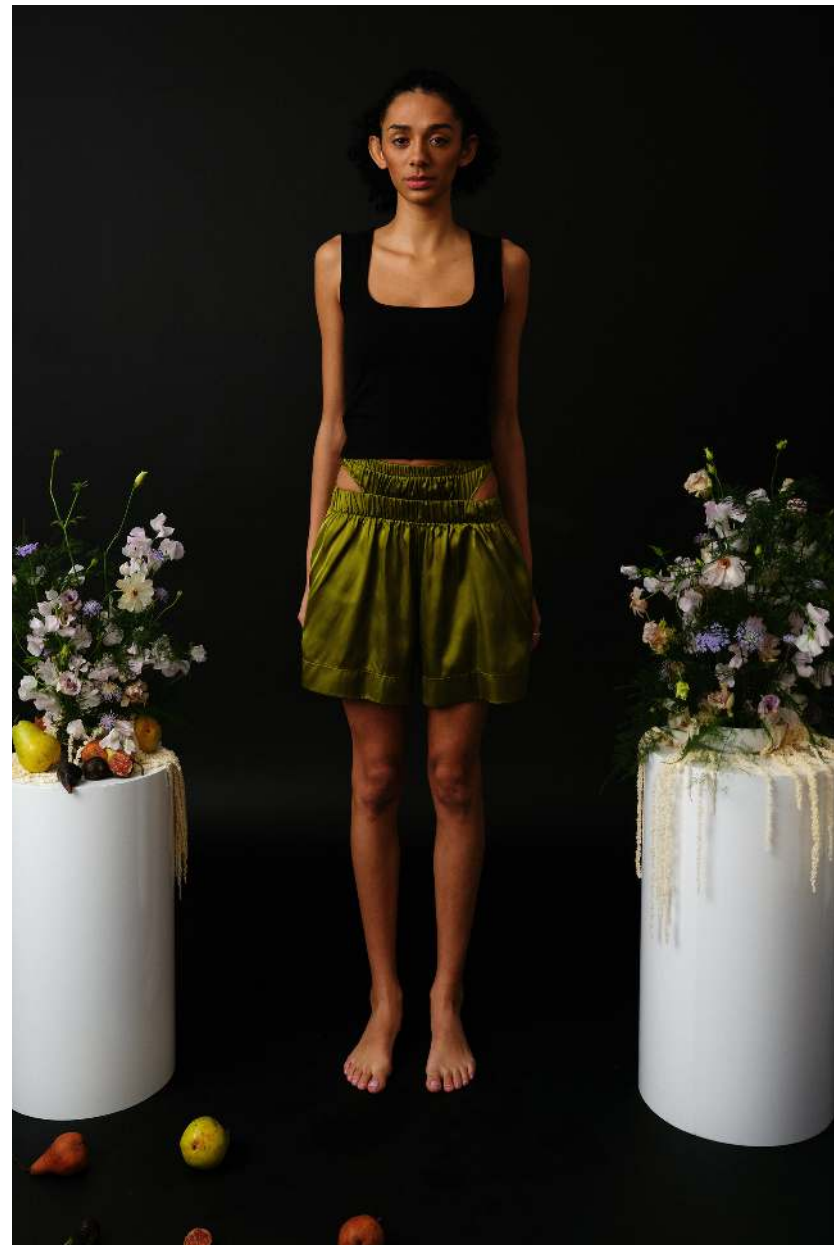
*smocked top with straps and
off-shoulder double-tiered sleeves*





Undie Shorts

in seaweed salad



*double-banded shorts with
cutout detail*

Mapo Dress

in onyx



*puffed sleeve dress with smocked bodice, bows at waist
and asymmetrical skirt seam*



Shumai Dress
in pointe



*cotton apron dress
with adjustable side ties and lace-up back*





Mapo Dress
in seaweed salad



*puffed sleeve dress with smocked bodice,
bows at waist, and asymmetrical skirt seam*

254 36th Street
Building 2, Floor 5, Suite B537
Brooklyn, New York 11232
www.allinaliu.com

sales: natasha@markedshowroom.com

Photography: Justin Lee [@jeh.min](https://www.instagram.com/jeh.min)
Model: Amaya Faria (Muse Models) [@amayafaria](https://www.instagram.com/amayafaria)
Stylist: Christina Knebel [@cknebel](https://www.instagram.com/cknebel)
MUA: Anthony Tulve [@ttulvemakeup](https://www.instagram.com/ttulvemakeup)
Set Design & Florals: Callie Walters [@quitfloral](https://www.instagram.com/quitfloral)

we had no ending,

said no goodbyes

for all my life,

i'll wonder why

— Lang Leav
Love and Misadventure