



ALLINA LIU

Spring / Summer 2023

## MY SIDE

---

Inspired by the juxtaposition between restriction versus release, this spring collection aims to examine the confluence of opposites. Exploring the world of bondage, a perennial concept for the brand, intricate smocking techniques and straps are used as a subtle nod to the subculture.



## Diana Dress

in baby floral

*asymmetrical cascading ruffle dress  
with smocked bodice*









## Kali Top

in pistachio

*satin bee jacquard bra top with tie detailing  
and adjustable straps*



## Raveena Pants

in pistachio

*satin bee jacquard lounge pants  
with elastic waistband*



Miso Dress  
in milk

*empire waisted cotton dress with adjustable spaghetti straps  
scallop trim, and asymmetrical skirt*





# Dancer Skirt

in yolk

*cotton skirt with  
drawstring tunnel and side ties*



# Arke Bustier

in baby floral

*cotton bustier with hook & eye closure and  
smocked back*



## Chai Dress

in milk



*cotton dress with side seam pockets,  
elastic bust bandeau detail,  
wide bendback hem, and smocking at back*







## Mira Top

in iris



*smocked top with puffed sleeves  
and back neck tie*

## Break Skirt

in iris



*midi skirt with side seam  
cutouts and ties*



Chase Slip  
in yolk

*satin bee jacquard slip dress with  
bodice seam details & lace up back*





Kali Top  
in yolk



*satin bee jacquard bra top with tie detailing  
and adjustable straps*



Raveena Pants  
in nebula



*satin bee jacquard lounge pants  
with elastic waistband*





# Hunter Dress

in iris

*satin bee jacquard dress with  
puffed sleeves, pleats, and wide bendback hem*





## Garden Top

in milk

*smocked cotton top with elastic straps  
and asymmetrical cascading ruffles*

## Bloom Skirt

in milk

*cotton mini skirt with ruched  
yoke and waist ruffle*





Degas Dress  
in onyx



*cotton dress with sleeve ruffles  
and suspension details*





Cap Bloomers  
in pistachio



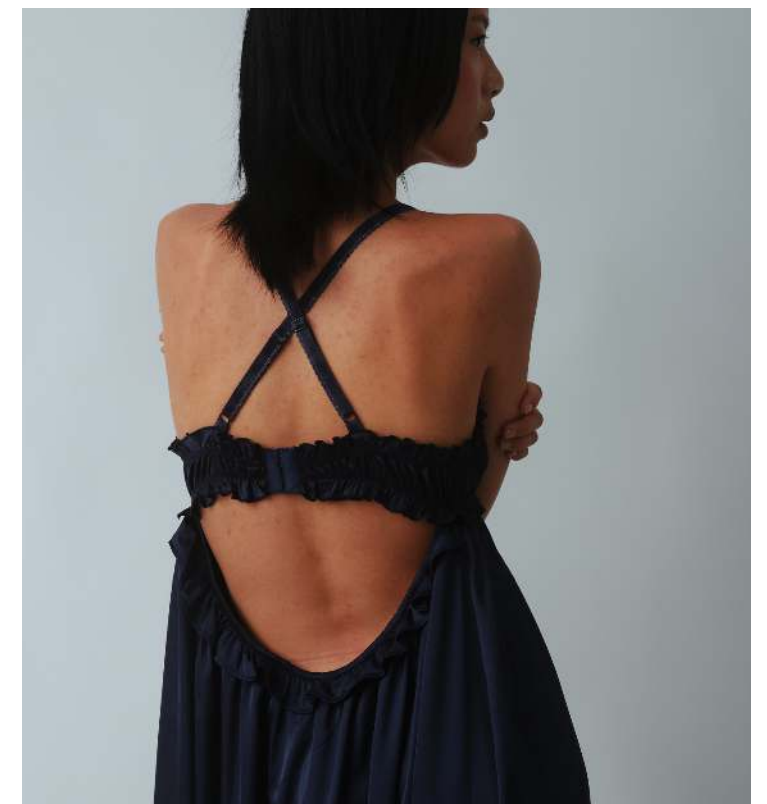
*cotton bloomers with elastic  
waistband and ruffles*



## Lettuce Dress

in nebula

*satin bee jacquard dress with  
bra bodice, adjustable straps, and high-low hem*







## Dancer Skirt

in milk

*cotton skirt with  
drawstring tunnel and side ties*







*smocked top with puffed sleeves  
and back neck tie*

Mira Top  
in onyx







## Garden Top

in yolk



*smocked cotton top with elastic straps  
and asymmetrical cascading ruffles*



## Mint Dress

in milk



*cotton apron dress with puffed sleeves  
and cross back elastic straps*





## Chase Slip

in pistachio



*satin bee jacquard slip dress with  
bodice seam details & lace up back*





Chai Dress  
in yolk

*cotton dress with side seam pockets,  
elastic bust bandeau detail,  
wide bendback hem, and smocking at back*





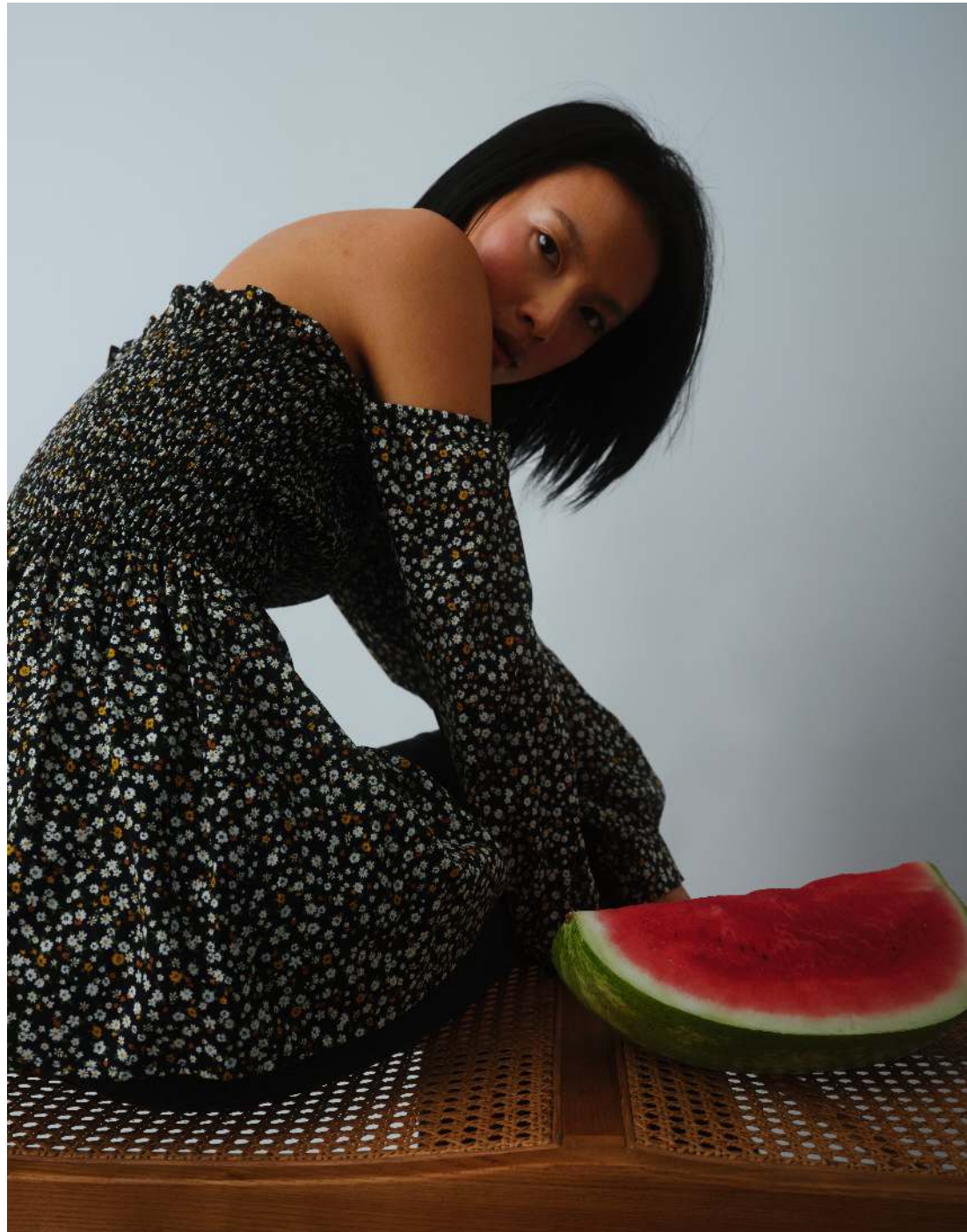




## Pimm Top

in baby floral

*off-shoulder cotton top with smocked bodice  
and cuffs with shell button*







Lettuce Dress  
in milk

*satin bee jacquard dress with  
bra bodice, adjustable straps, and high-low hem*







254 36th Street  
Building 2, Floor 5, Suite B537  
Brooklyn, New York 11232  
[www.allinaliu.com](http://www.allinaliu.com)

sales: [natasha@markedshowroom.com](mailto:natasha@markedshowroom.com)

Photography: Justin Lee [@jeh.min](#)  
Model: Judes Kim (Muse Models) [@thejudes](#)  
Stylist: Christina Knebel [@cknebel](#)  
MUA: Anthony Tolve [@ttulvemakeup](#)

