



ALLINA / *luu*  
SPRING / SUMMER '17





*MEMORIES, EVEN YOUR MOST PRECIOUS ONES, FADE SURPRISINGLY QUICKLY*



NIAMH TOP  
WHITE OFF-SHOULDER KNIT



*LOOK 1*



SAM SKIRT  
LIGHT WASHED DENIM  
WITH RAW EDGE







LOOK 2

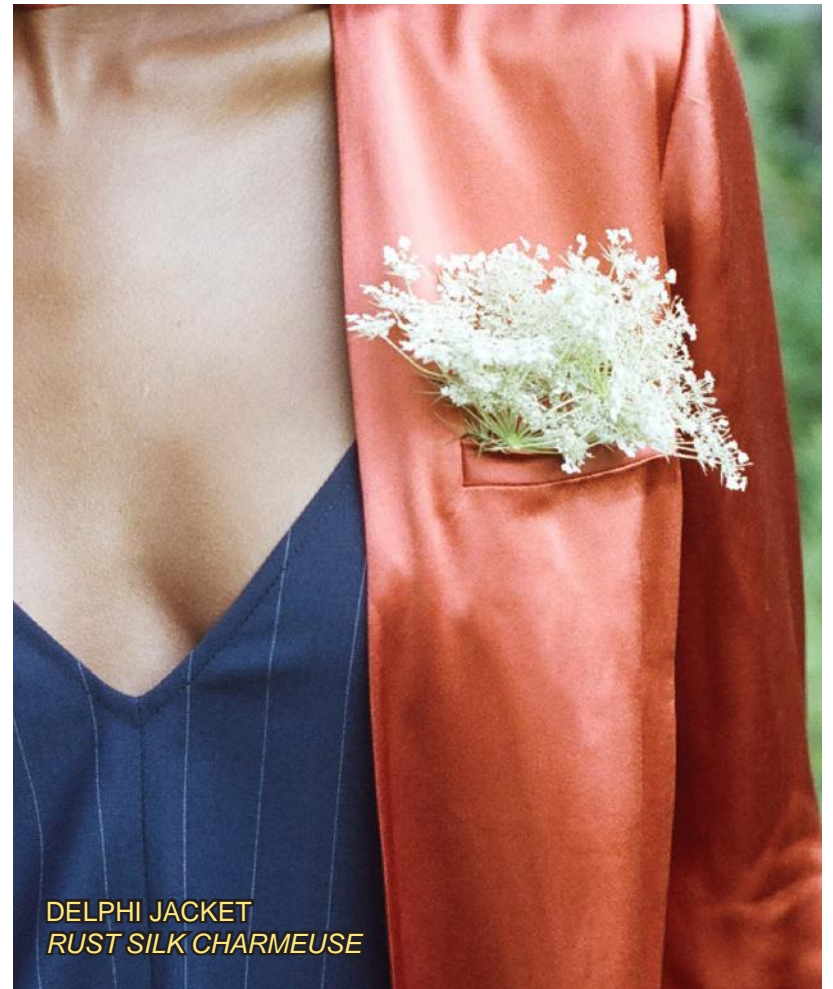
BIRDIE DRESS  
LIGHT BLUE SILK CHARMEUSE







*LOOK 3*



DELPHI JACKET  
RUST SILK CHARMEUSE







**LOOK 4**

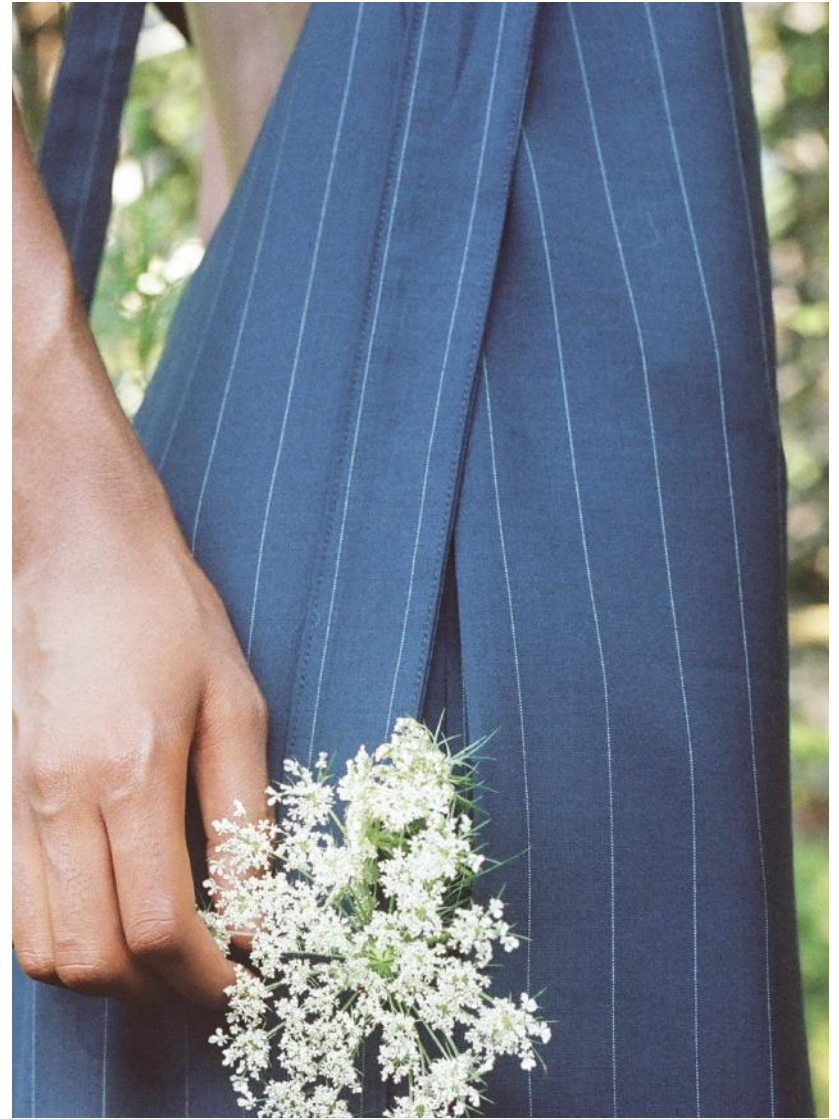
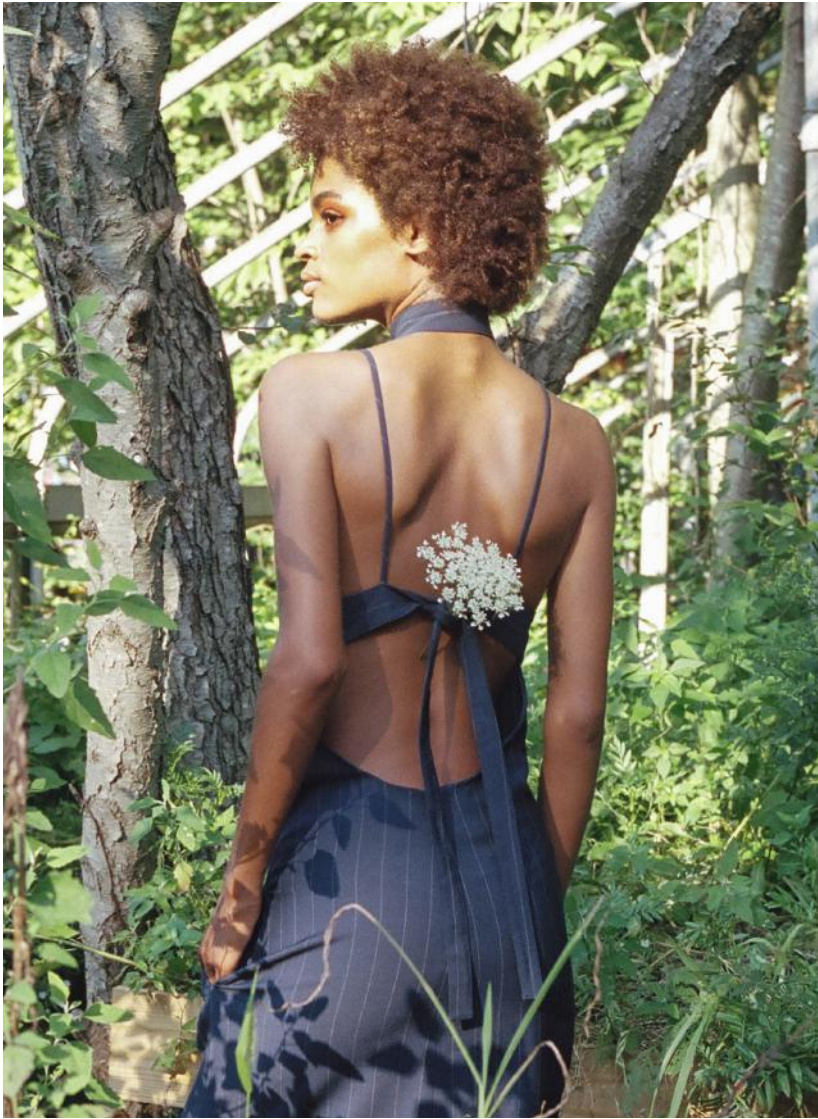


**EDESSA CHOKER**  
**NAVY STRIPED SUITING**



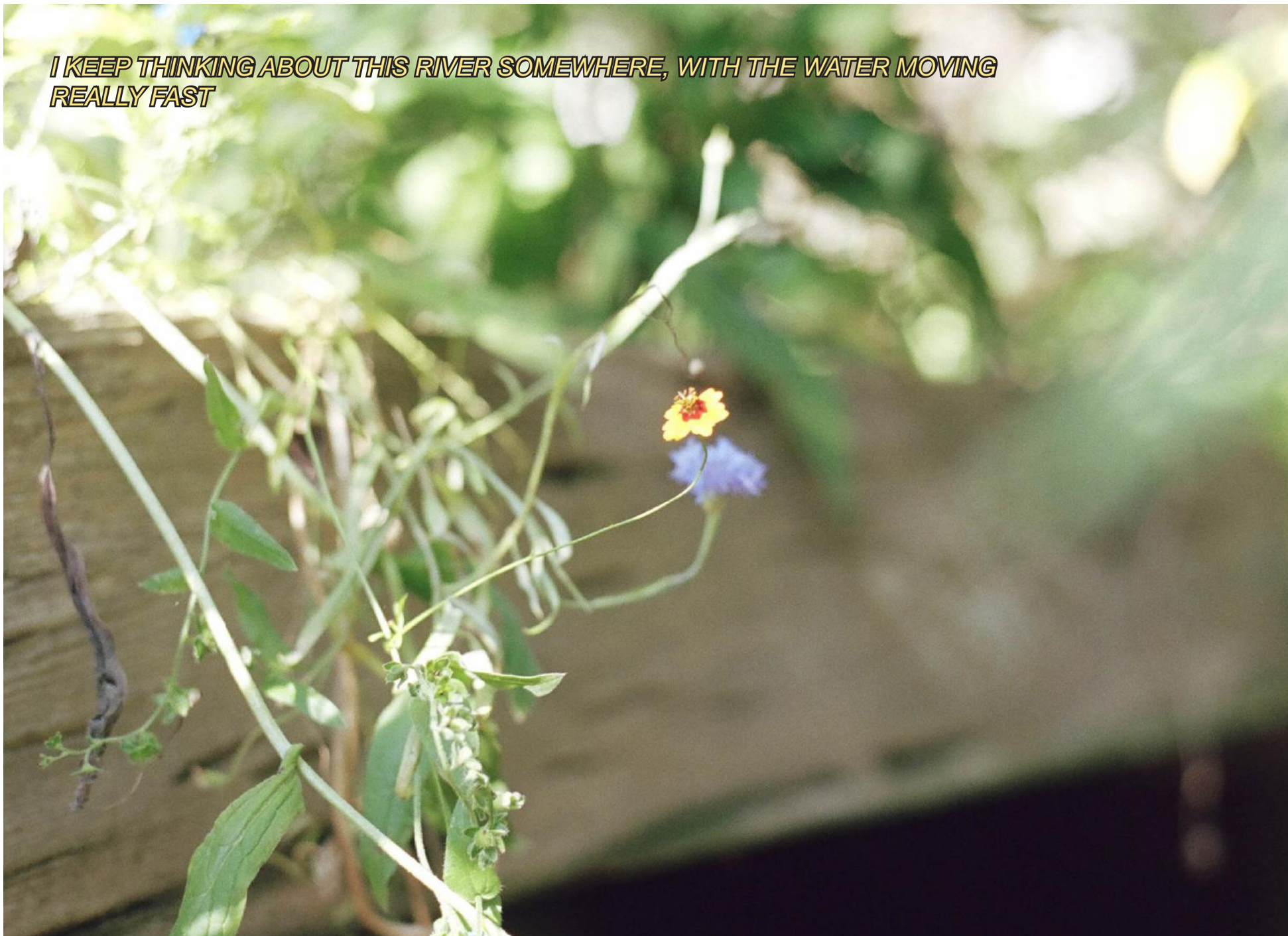
**CALY DRESS**  
**NAVY STRIPED SUITING**







*I KEEP THINKING ABOUT THIS RIVER SOMEWHERE, WITH THE WATER MOVING  
REALLY FAST*







INDIRA TOP  
WHITE COTTON SHIRTING

*LOOK 5*



FRANEY JEAN  
LIGHT WASHED DENIM  
WITH RAW EDGE





DEMETER TUNIC  
LIGHT BLUE COTTON SHIRTING

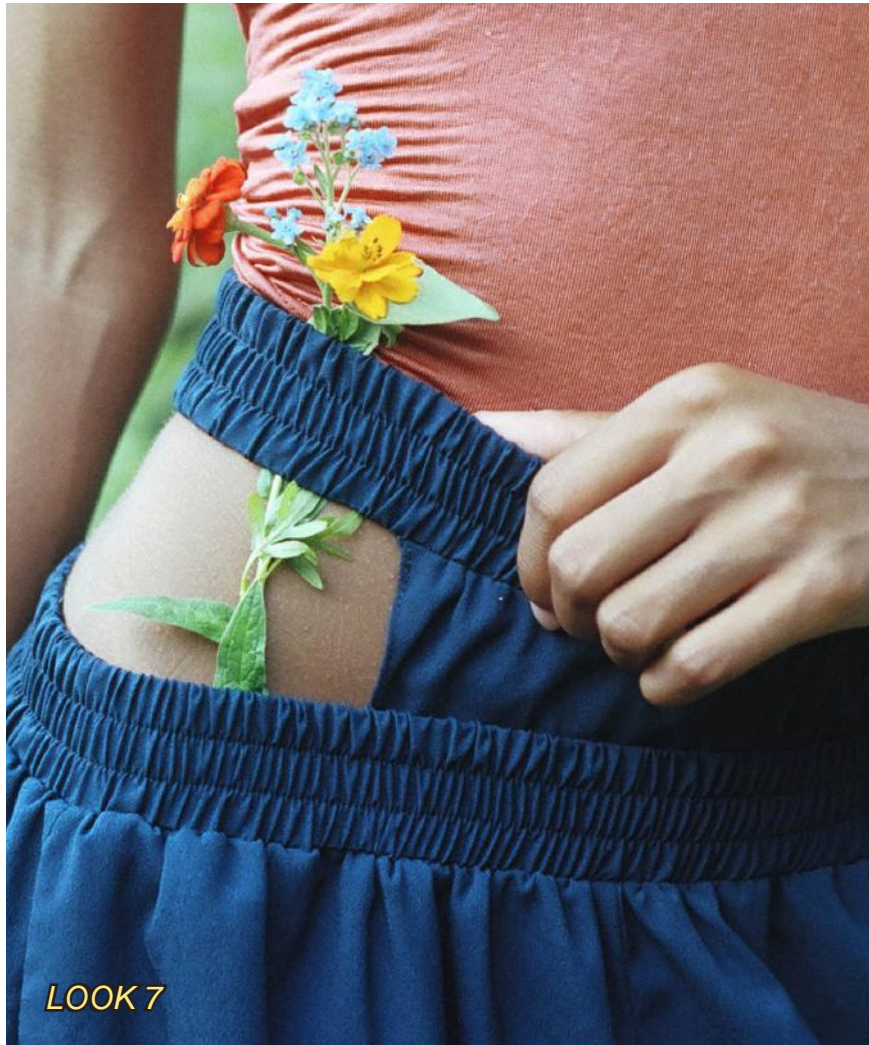
*LOOK 6*













A photograph of a greenhouse interior. The structure is made of curved metal frames covered with translucent plastic. Inside, there are several rows of plants. In the foreground, a bush of green leaves with a single bright red rose is prominent. Other plants with yellow flowers are visible in the background. The lighting is soft and diffused, typical of a greenhouse environment.

*THE PROBLEM, AS I SEE IT, IS THAT YOU'VE BEEN*

*TOLD AND NOT TOLD*





MURRAY BACKPACK JACKET  
WASHED DENIM WITH  
RAW EDGE



LOOK 8









*LOOK 9*







*LOOK 10*



FLEUR DRESS  
LIGHT BLUE COTTON  
SHIRTING  
PRIYA SKIRT  
WHITE COTTON SHIRTING



A photograph of a dense forest. Sunlight filters through the canopy, creating bright patches on the ground and foliage. The trees are mostly deciduous with green leaves. The overall scene is lush and vibrant.

*SOON ENOUGH, THE LONG HOURS, THE TRAVELING, THE BROKEN SLEEP HAVE ALL CREPT  
INTO YOUR BEING AND BECOME PART OF YOU,*

*SO EVERYONE CAN SEE IT, IN YOUR POSTURE, YOUR GAZE,  
THE WAY YOU MOVE AND TALK*



LOOK 11



FREYA SKIRT  
NAVY CREPE



*LOOK 12*







EDESSA CHOKER  
RUST SILK CHARMEUSE





**DELPHI JACKET**  
**NAVY STRIPED SUITING**





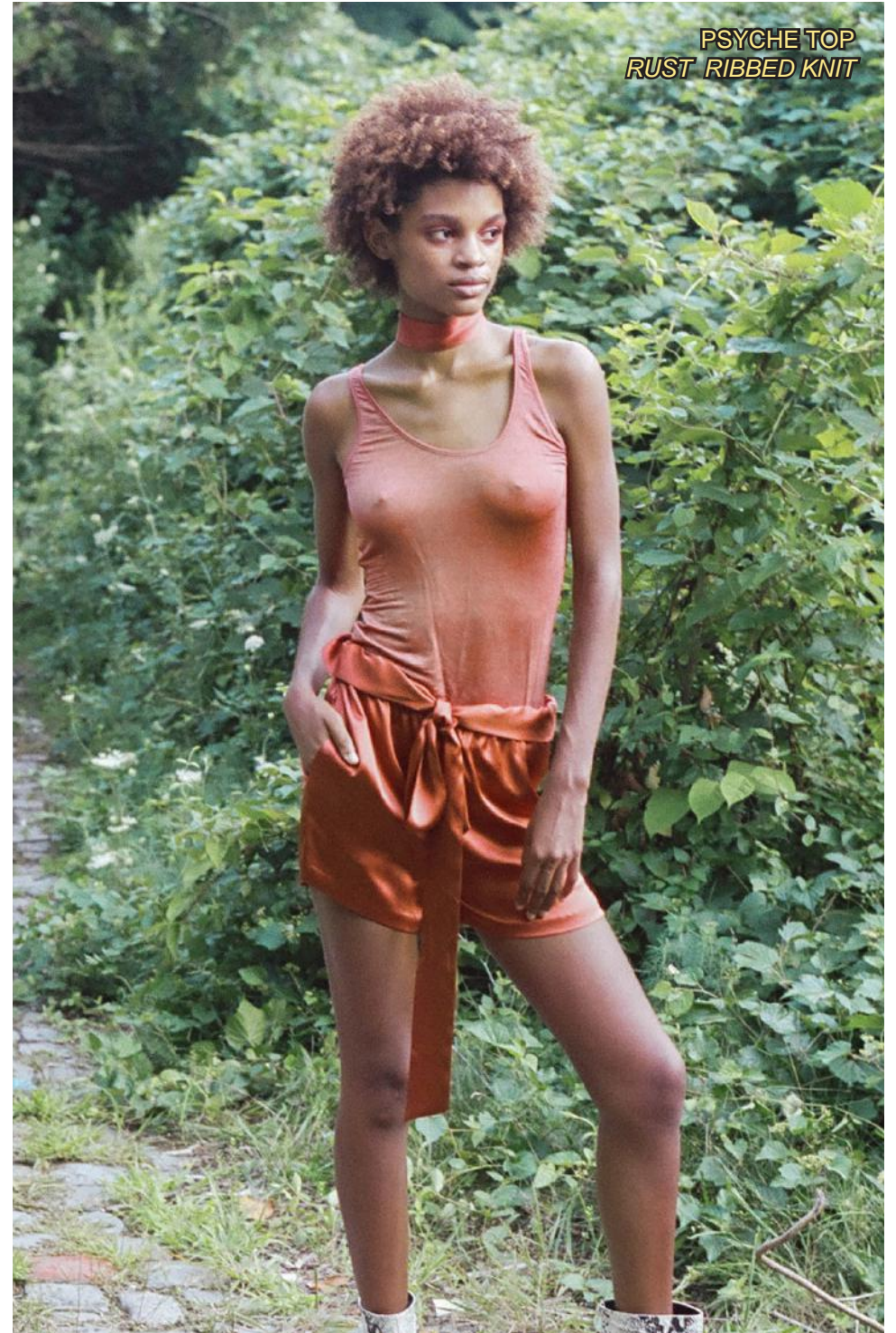




*LOOK 14*



*CAIA SHORTS  
RUST SILK CHARMEUSE*



*PSYCHE TOP  
RUST RIBBED KNIT*





*I SAW A NEW WORLD COMING RAPIDLY*



LOOK 15



ARMILLA DRESS  
WHITE COTTON POPLIN











*LOOK 16*







*LOOK 17*



*MAIA DRESS  
RUST RIBBED KNIT*





*IF WE'D UNDERSTOOD THAT BACK THEN—WHO KNOWS?—MAYBE WE'D HAVE KEPT A TIGHTER  
HOLD OF ONE ANOTHER*



**LOOK 18**











BIRDIE DRESS  
IVORY LASER CUT SILK









CREDITS

PHOTOGRAPHER  
FRANEY MILLER

STYLIST  
SAM BATES

MODEL  
THERESA HAYES  
AT FORD

HAIR & MAKEUP  
CLARA RAE

EXERPTS FROM "NEVER LET ME GO"  
BY KAZOU ISHIGURO

CONTACT

PRESS  
CHRISTINA@HOUSEOF.NYC

SALES  
CONTACT@ALLINALIU.COM

STUDIO  
BY APPOINTMENT ONLY

INSTAGRAM.COM/  
FACEBOOK.COM/

ALLINALIUSTUDIO  
ALLINALIUOFFICIAL

MADE IN  
NYC