

A photograph of a bouquet of blue flowers and green ferns. The flowers are in the foreground, and the ferns are in the background. The text "ALLINA LIU" is overlaid in the center.

ALLINA LIU

Pre-Fall 2022

Allina Liu is a label based in lower Manhattan, NYC.

After honing her design skills at notable fashion houses such as The Row, Thakoon, and Rebecca Taylor, Allina Liu launched her eponymous brand in 2015.

Seeking to combine elegance with sensuality and comfort with style, Allina's work explores the confluence of opposites. Inspirations include Chinese photographer Ren Hang, Korean fiber artist Do-ho Suh, and 17th century Dutch portraiture.

Allina Liu focuses on quality above all else. All pieces are created to ensure the highest standards are met. This relentless pursuit of excellence, combined with the brand's stance on sustainability and ethical labor, distinguishes the company's products.

Wren Top

pictured in the color cobalt

*floral embroidered mesh tulle with
cross-back straps*



Jay Skirt

pictured in the color nebula

*cotton twill pencil skirt with satin garter & strap
detail and contrast top stitching*





Baguette Dress

pictured in the color milk

*cotton mini dress with shoulder cutouts,
tie detailing, and ruched bodice*



Delphi Duster

pictured in the color poppy field

satin duster jacket with single

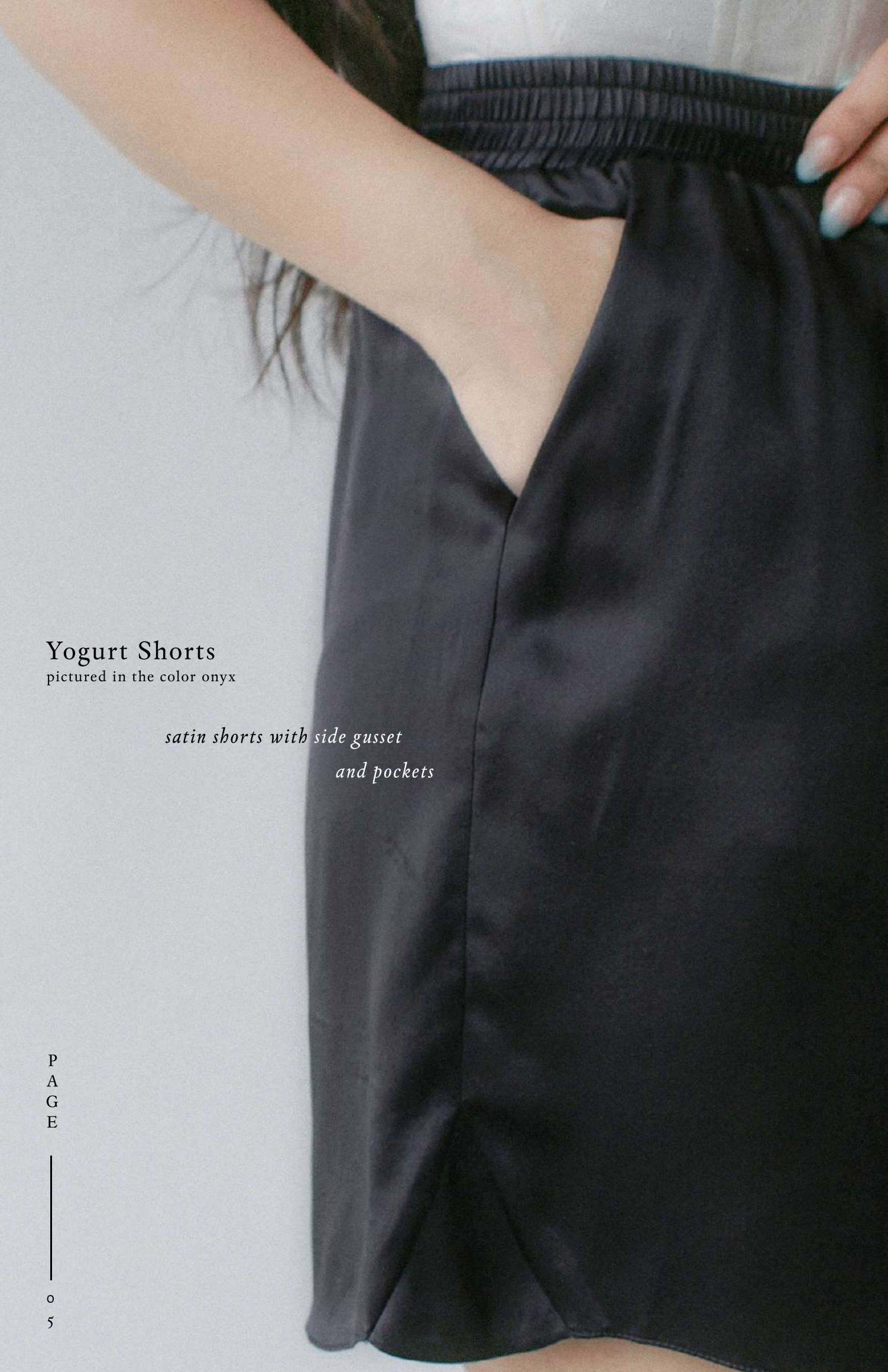
welt pocket & back sash



Calla Slip

pictured in the color poppy field

*satin slip dress with cutout back,
tie detail, & slits at hem*



Yogurt Shorts

pictured in the color onyx

*satin shorts with side gusset
and pockets*



Dijon Blouse

pictured in the color nori

*crepe back satin blouse with
floating illusion sleeve ruffle detail*



Milo Pants

pictured in the color nori

*cotton twill pants with satin garter
featuring trapunto stitching detail*

Doodle Top

pictured in the color nori

*satin top with v-neck
and asymmetrical draped ruffle sleeves*





Mei Top
pictured in the color milk

*cotton top with bows and
floating ruffle detail*



Luna Bustier

pictured in the color cobalt

*cotton bustier with front zip, back smocking,
tie detail, & high-low hem*

Emma Top

pictured in the color onyx

off shoulder cotton top with zipper detailing



Jasper Pants
pictured in the color onyx
*carwash cotton twill pants with
zipper detailing*





Bugs Dress

pictured in the color milk

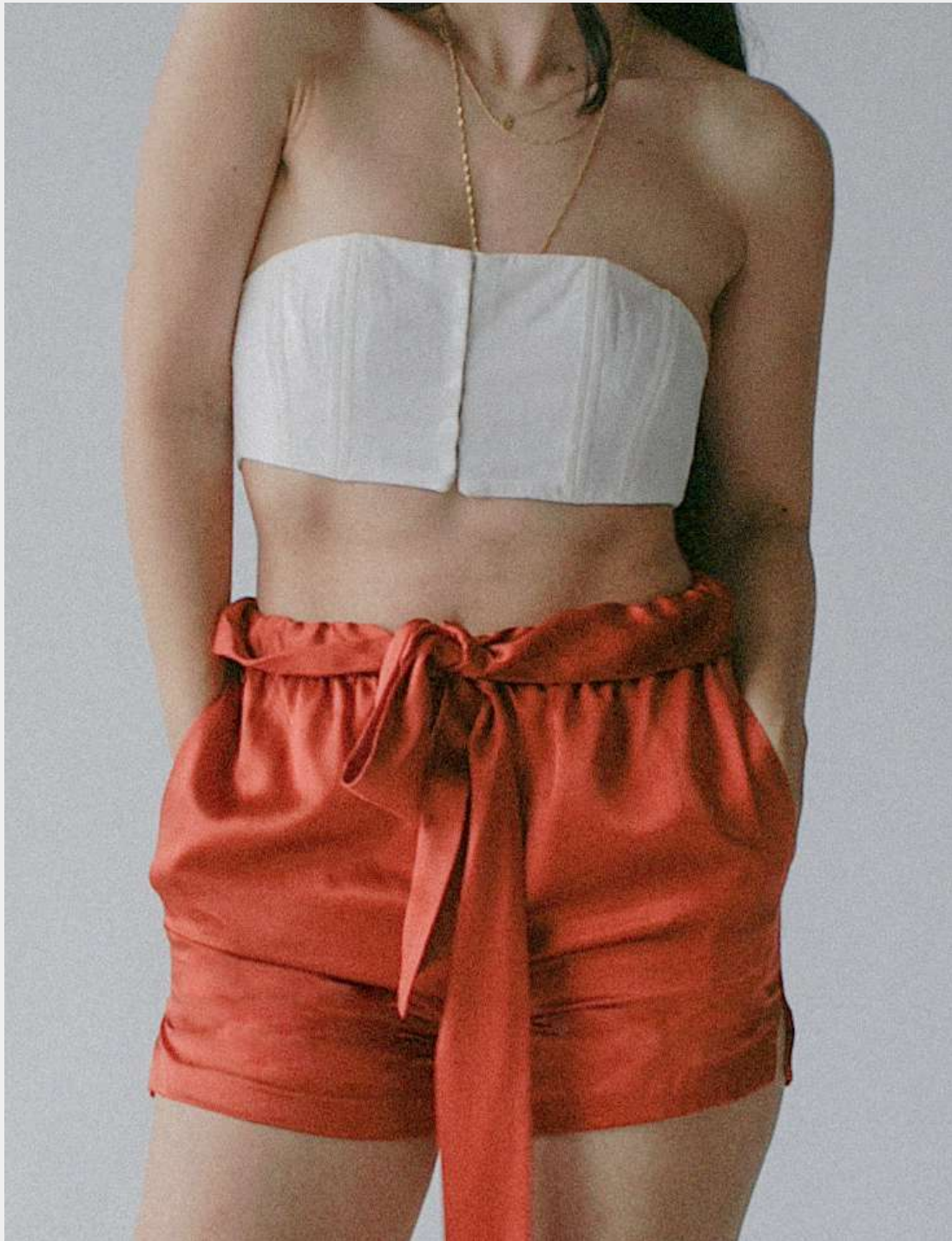
*cotton dress with square neckline, bodice detail
and ruffled sleeves*





Bear Bustier

pictured in the color milk



*cotton bustier with front hook & eye closure &
back smocking*

Webb Shorts

pictured in the color poppy field

*satin shorts with elastic waistband & wide tie
detail*





Buddy Dress
pictured in the color black bouquet



*satin dress with asymmetrical ruffle hem
and strap detailing at bodice*



Teddy Skirt

pictured in the color milk

*cotton skirt with asymmetrical ruffle,
bows, & floating ruffle detail*

Ridley Dress



pictured in the color cobalt



*sheer tulle overlay dress with
pleating and sleeve ruffles*

Delphi Duster

pictured in the color lemon meringue

satin duster jacket with single welt pocket & back sash



Calla Slip

pictured in the color lemon meringue

*satin slip dress with cutout back,
tie detail, & slits at hem*

Thanatos Vest

pictured in the color onyx



*cotton twill asymmetrical vest
with back ruffle, contrast topstitching, & shoulder cutouts*





Buddy Dress

pictured in the color cobalt

satin dress with asymmetrical ruffle hem
and strap detailing at bodice



A light-colored wooden block stands centrally on a white surface. A bundle of dried, green, feathery plants is draped over the top edge of the block, with some strands hanging down its front face. To the left of the block, there is a pile of fresh green ferns and a cluster of small blue flowers. To the right, there is a pile of dark green ferns, a cluster of small pink flowers, and a bundle of dried green plants. The background is a plain, light gray wall.

*55 Water Street, Floor 3
Brooklyn, NY 11201*

*contact@allinaliu.com
saskia@markedshowroom.com*