

ALLINA LIU

Fall 2022

Allina Liu is a label based in NYC.

After cutting her teeth as a designer at notable fashion houses such as The Row, Thakoon, J.Crew, and Rebecca Taylor, Allina Liu launched her eponymous brand in 2015.

Seeking to combine elegance with sensuality and comfort with style, Allina's work explores the confluence of opposites. Inspirations include Chinese photographer Ren Hang, Korean fiber artist Do-ho Suh, and 17th century Dutch portraiture.

Awkwafina, Cardi B., Justine Skye, and supermodel Ji Hye Park are amongst Liu's celebrity clientele. Her work is also regularly featured in major publications such as Vogue, Marie Claire, WWD, and NYLON.

Allina Liu focuses on quality above all else. All pieces are created to ensure the highest standards are met. This relentless pursuit of excellence, combined with the brand's stance on sustainability and ethical labor, distinguishes the company's products.



Peaches Coat

pictured in houndstooth

*asymmetrical coat with ruffle &
welt pocket detailing*



Wonton Top

pictured in milk

*cotton top with long sleeve cuffs &
lace-up detailing*





Shiso Dress
pictured in matcha

*satin dress with empire waist, boning at bodice,
back elastic, & strap detailing*





Bee Skirt

pictured in macaron

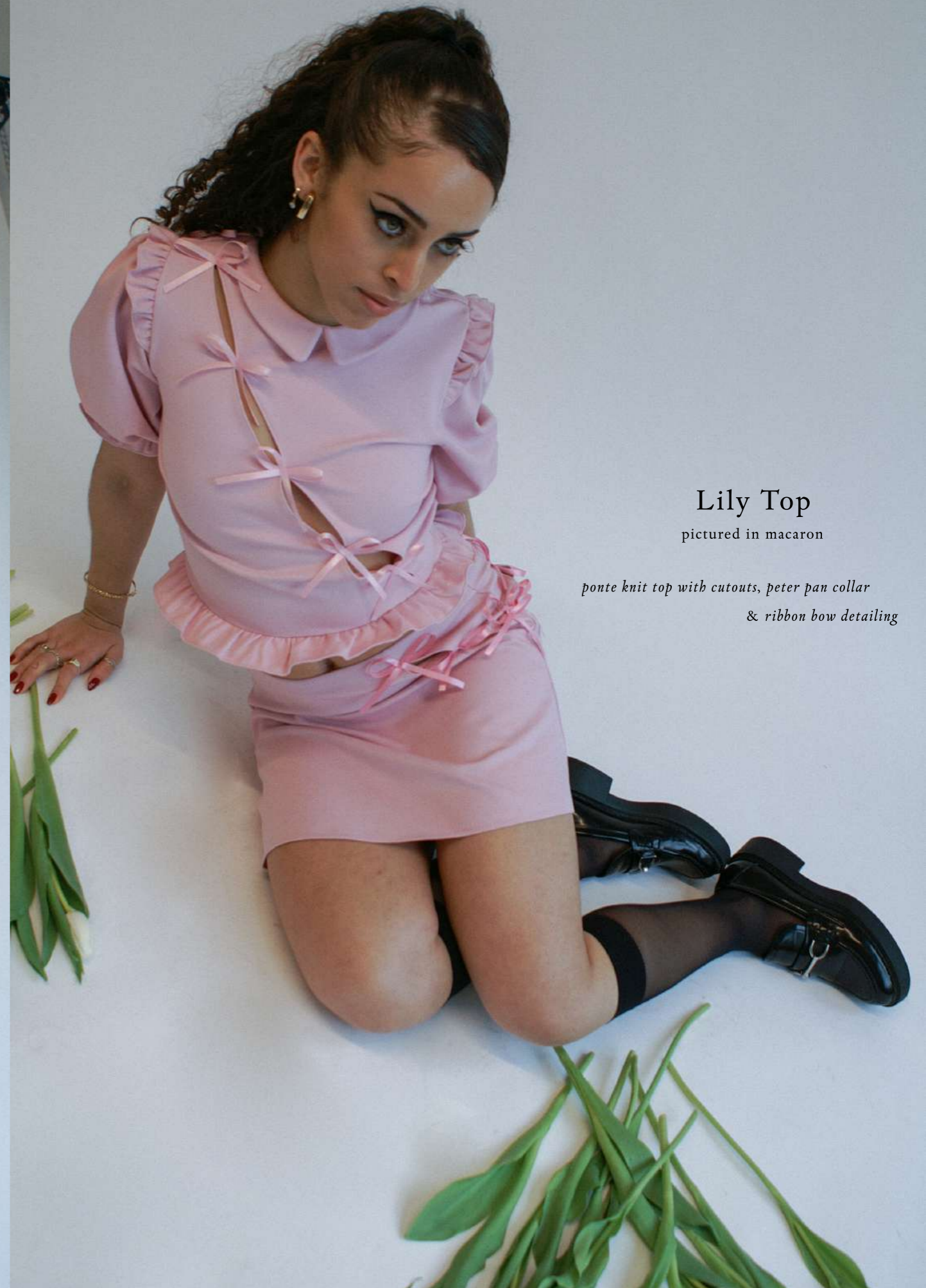
*ponte knit skirt with cutouts &
ribbon bow detailing*



Lily Top

pictured in macaron

*ponte knit top with cutouts, peter pan collar
& ribbon bow detailing*





Cashew Backpack Jacket
pictured in milk tea



*cotton twill trench with
carabiner detachable backpack
& welt pocket details*





Pho Skirt

pictured in gingham



*cotton skirt with tiered ruffle
detailing & center back zip*



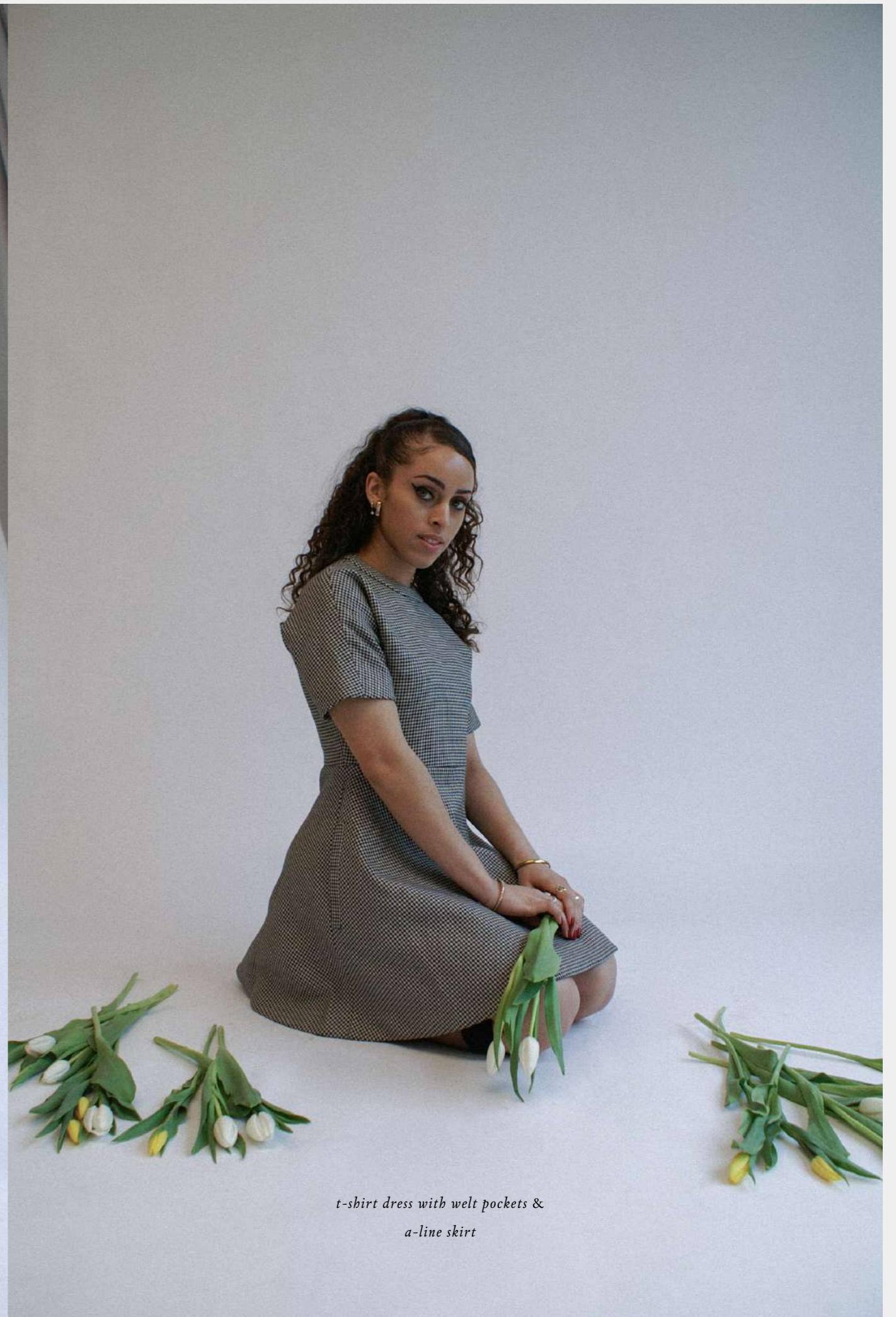
Soy Top
pictured in matcha

satin top with center front button
cross-back straps, & ruffle detailing





Christina Dress
pictured in houndstooth



*t-shirt dress with welt pockets &
a-line skirt*

Udon Top

pictured in butterfly pea



*satin top with empire waist, boning at bodice,
back elastic & strap detailing*





Cloud Skirt
pictured in gingham



*pleated cotton mini skirt with
leg slit detailing*



Strattus Dress

pictured in milk

*cotton dress with puffed sleeves
& waist cutouts with adjustable bow ties*





Code Skirt

pictured in milk tea



*pleated cotton twill skirt with
high-low hem*

Dumpling Bra

pictured in milk tea

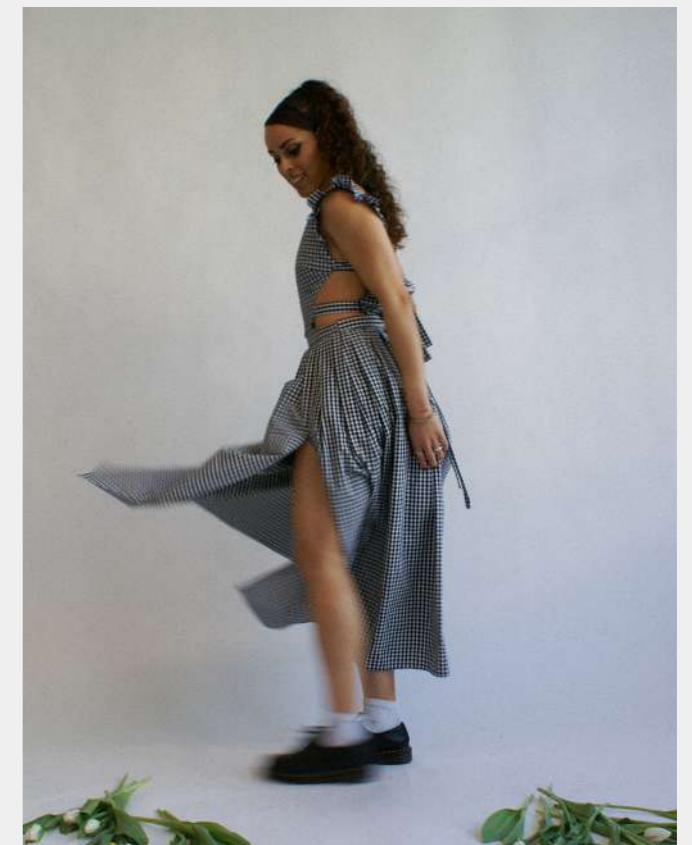


*cotton twill bra with ruffle detailing
& double straps*



Panda Dress
pictured in gingham

*cotton apron dress with leg slit,
cutouts, & strap detailing*



Bun Skirt

pictured in butterfly pea



*skirt with hip cutouts &
side seam bow details*







Sesame Dress

pictured in nebula

*cotton jacquard v-neck dress with cold shoulder
cutouts & back neck tie*

Ube Jacket

pictured in nebula

*cotton jacquard duster with
welt pockets and back sash*





*satin skirt with hip hugging elastic &
bow detailing*

Sando Skirt
pictured in matcha





Katsu Dress

pictured in butterfly pea



*satin dress with flutter sleeves
& cross-back straps*

Nami Top
pictured in onyx

*off shoulder stretch satin top with
sleeve ruffles & center back zipper*

Brioche Pants
pictured in onyx

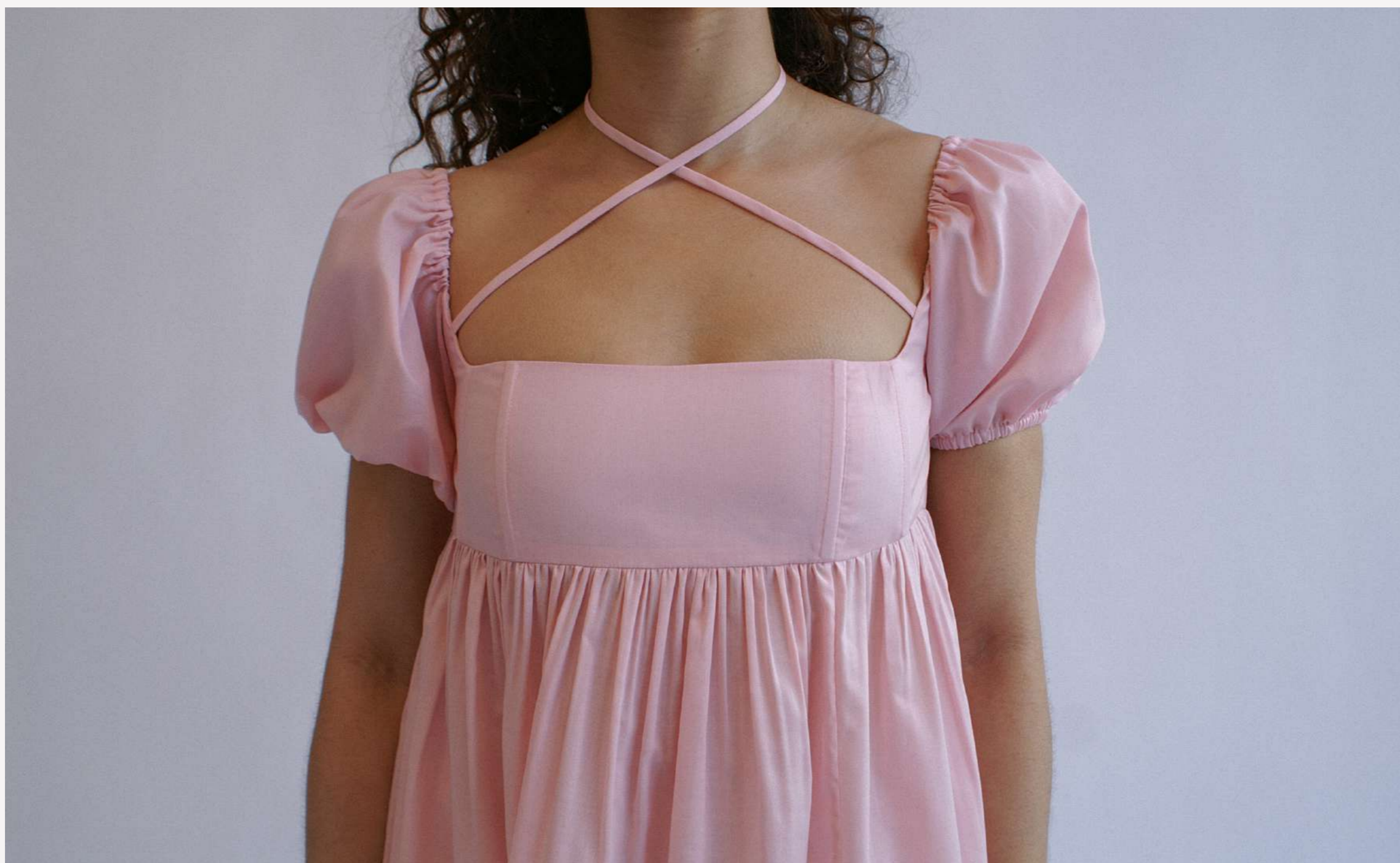
*slightly flared ponte knit pants with cutouts &
ribbon bow detailing*

Congee Dress

pictured in macaron



*cotton dress with puffed sleeves,
neck-tie, & leg slit*



254 36th Street
Building 2, Floor 5, Suite B537
Brooklyn, New York 11232

www.allinaliu.com
contact@allinaliu.com
saskia@markedshowroom.com