

# Vinci®

## NANO™ Brewer for KCups



## INSTRUCTIONS

[www.vincihousewares.com](http://www.vincihousewares.com) | 888.735.3621 | [support@vincihousewares.com](mailto:support@vincihousewares.com)

## IMPORTANT SAFEGUARDS

When using electrical appliances, basic safety precautions should always be taken to reduce the risk of fire, electric shock, and/or injury to persons, including the following:

- Read all instructions before first use and save for future reference.
- Remove poly bags, packing materials, and any stickers from the appliance before first use.
- Make sure the appliance is cleaned thoroughly before using.
- Do not use the appliance for other than intended use. For household use only. Do not use outdoors.
- This appliance should not be used by or near children or individuals with certain disabilities.
- Unplug from outlet when not in use, before putting on or taking off parts, and before cleaning.
- Avoid contacting moving parts.
- To protect against electrical shock, do not immerse the cord, plug, Control Lid, and Power Base in water or other liquid.
- Do not operate any appliance with a damaged cord or plug, or if the appliance malfunctions or has been damaged in any manner. If you think there may be an issue with your product, please contact customer support at 888-735-3621 or email support@vincihousewares.com.
- Do not let the cord hang over the edge of the table or counter, or touch hot surfaces.
- The use of extension cords is NOT recommended.
- Do not use outdoors.
- Do not place on or near a hot gas or electric burner or in a heated oven.
- Never operate the Vinci Nano Brewer with a damaged or cracked Carafe(E) or a loose or damaged Handle.
- The Glass Carafe will be hot during use. Do not touch hot surfaces. Always Use Handle.
- Never open the Vinci Nano Brewer during the brewing cycle.
- Do not use the appliance for anything other than its intended use.
- There is a sharp needle that punctures pre-filled K-Cups® on the underside of the Control Lid. To avoid the risk of injury, do not touch or put your fingers or other body parts in proximity to the Piercing Needle.
- Never operate the Vinci Nano Brewer with loose coffee grounds, loose tea, cocoa powder, or any other substance in the Carafe aside from clean liquids free of debris. All grounds, powders, and teas need to be contained in a pre-filled or refillable K-Cup®.
- The use of accessory attachments, not recommended by Vinci Housewares, may cause injuries and should not be used.
- Only use the included power cord with the Vinci Nano Brewer.
- Always unplug your Vinci Nano Brewer before disassembly, serving, or cleaning.
- Do not use abrasive cleaning agents to clean your Vinci Nano Brewer.
- ARM Enterprises, Inc. (its holdings or subsidiaries) shall not accept liability for damages caused by improper use of the appliance.

- Close supervision is necessary when any appliance is used by or near children.
- Unplug from outlet when not in use and before cleaning.
- Allow to cool before putting on or taking off parts, and before cleaning the appliance.
- Always attach plug to appliance first, then plug cord into the wall outlet. To disconnect, turn any control to "off", then remove plug from wall outlet.
- Carefully close the lid until you hear "click" sound, if opening, carefully lift the tab in an upward motion to unlock the lid.
- Scalding may occur if the lid is removed during the brewing cycles.
- Only use capsules intended for this appliance. If the capsule does not fit, do not force the capsule into the appliance.
- This appliance is not intended for use by persons (including children) with reduced physical, sensory, or mental capabilities, or lack of experience and knowledge, unless they have been given supervision or instruction concerning use of the appliance by a person responsible for their safety.
- Children should be supervised to ensure that they do not play with the appliance.
- If the SUPPLY CORD is damaged, it must be replaced by the manufacturer, its service agent or similarly qualified persons in order to avoid a hazard.
- If the appliance is overfilled, boiling water may be ejected.
- Only to be used with the stand provided.
- Avoid spillage on the connector.
- Only use capsules intended for this appliance. If the capsule does not fit, do not force the capsule into the appliance.
- WARNING: The filling aperture must not be opened during use.
- WARNING: To avoid the risk of injury, do not open the brew chamber during the brew process.
- The coffee-maker shall not be placed in a cabinet when in use.
- WARNING: Do not use the appliance if the surface is cracked.
- Cleaning and user maintenance shall not be made by children without supervision.

**SAVE THESE INSTRUCTIONS  
FOR HOUSEHOLD USE ONLY**

Conforms to UL STD. 1082,  
Certified to CSA STD. C22.2 No.60335-1 & No.60335-2-15

# WARNING: RISK OF FIRE OR ELECTRICAL SHOCK

## WARNING:

- To reduce the risk of fire or electrical shock, do not disassemble or attempt to repair this appliance.
- Repair should be done by authorized service personnel only.
- Do not immerse in any liquid.
- The Vinci Nano Brewer is intended for household use only.

## SPECIAL CORD SET INSTRUCTIONS:

- A short power-supply cord is provided to reduce the risks resulting from becoming entangled in or tripping over a long cord.
- If an extension cord is used, the marked electrical rating of the extension cord must be at least as great as the electrical rating of the appliance, and the longer cord should be arranged so that it will not drape over the countertop or tabletop where it can be pulled on by children or tripped over.
- This appliance has a polarized plug (one blade is wider than the other). To reduce the risk of electric shock, this plug is intended to fit into the outlet one way.
- If the plug does not fit into the outlet, reverse the plug, and try to reinsert the plug into the outlet.
- Do not force the plug into the outlet.
- Do not attempt to modify the electrical plug in any way.
- If the plug still does not fit, please contact a qualified electrician.
- To reduce the risk of injury, do not drape cord over the counter top or table top where it can be pulled on by children or tripped over unintentionally.
- A short power-supply cord is provided to reduce risks resulting from becoming entangled in or tripping over a longer cord.
- Longer extension cords are available and may be used if care is exercised in their use.
- If a long extension cord is used: The marked electrical rating of the detachable power-supply cord or extension cord should be at least as great as the electrical rating of the appliance; If the appliance is of the grounded type, the extension cord should be a grounding type 3- wire cord; and the longer cord should be arranged so that it will not drape over the counter top or table top where it can be pulled on by children or tripped over.

## TABLE OF CONTENTS

Important Safeguards.....	1
Warnings.....	3
Table of Contents .....	4
Introduction .....	5
Getting to Know your Nano Brewer .....	7
How to Make Coffee .....	9
How to Boil Water .....	14
Care and Cleaning .....	16
Weekly Maintenance Cycle .....	18
Troubleshooting .....	19
Warranty .....	21

**SAVE THESE INSTRUCTIONS  
FOR HOUSEHOLD USE ONLY**

# Vinci<sup>®</sup>

## NANO BREWER

Welcome to the Vinci Housewares family; we are happy you're here!

We would like to introduce you to the Vinci Nano Single Serve Coffee Brewer, the world's smallest yet fully customizable K-Cup<sup>®</sup> brewer. Now you no longer have to choose between convenience and quality.

Small but mighty, the Nano Brewer rethinks single-serve brewing with its patented Circle Flow Brewing Technology, which continuously circulates water through the coffee grounds resulting in an exceptionally extracted, well-balanced, flavorful, and piping hot cup of coffee.

The compact Nano Brewer is perfect for leaving on the countertop, having a personal brewer at the office, coffee in the dorm, or even taking along while traveling.

The Nano Brewer brews your single-serve coffee at an ideal 95°-97°C/203°-207°F in as little as 2 1/2 minutes.

Customize your coffee by choosing between 3 preset brew sizes, or experimenting with your water measurements to find the right strength and size for your taste. You can also choose between using pre-filled K-Cups<sup>®</sup> or using the included Perfect Pod Reusable Filter Cup.

Use the Rapid Boil feature to bring up to 20 oz of water to 212°F (100°C) in just minutes for tea, cocoa, or even ready-to-eat foods that require adding hot water.

Vinci's Nano Brewer also features a built-in Clean Function, so you can rest assured that your single-serve brewing experience is clean and hygienic.

To learn more about our other products, sign up for our newsletter to receive news, recipes, and offers, visit us at [www.vincihousewares.com](http://www.vincihousewares.com).



## GETTING TO KNOW YOUR NANO BREWER

Before using your Nano Brewer for the first time, please familiarize yourself with the various parts of the machine and how it functions.

Before first use, and after subsequent uses, wash all parts with warm soapy water, EXCEPT for the Control Lid(B) and Power Base(I), which should never be submerged in water (see full Cleaning instructions on page 16).

Carefully read all the instructions and save this manual for future reference.

- A. Control Knob
- B. Control Lid
- C. Lid Release
- D. Piercing Needle
- E. Borosilicate Glass Carafe
- F. Heating Plate
- G. K-Cup® Holder
- H. Water Pickup Tube
- I. Power Base
- J. Reusable Filter Cup
- K. Instruction Manual



## CONTROL LID

### OFF

When the Control Knob(A) is in the Off position, there is no power to the Nano Brewer and it will not operate.

## BREW SETTINGS

### **SMALL CUP SETTING** 4oz - 6oz of water

When the Small Cup position is selected and the Brew button is pressed, the brewing process will begin. Once the water reaches the proper temperature, the Circle Flow Technology will activate and run for 20 seconds.

### **MEDIUM CUP SETTING** 6oz - 8oz of water

When the Medium Cup position is selected and the Brew button is pressed, the brewing process will begin. Once the water reaches the proper temperature, the Circle Flow Technology will activate and run for 40 seconds.

### **LARGE CUP SETTING** 8oz - 12oz of water

When the Large Cup position is selected and the Brew button is pressed, the brewing process will begin. Once the water reaches the proper temperature, the Circle Flow Technology will activate and run for 60 seconds.

### **BOIL 4oz - 20oz of water**

When the Boil position is selected, the brewer will bring the water in the Carafe(E) to a boil when the Brew button is pressed. The time it takes to bring water to a boil is depended upon the amount of liquid in the Carafe(E).

### **CLEAN**

When the Clean position is selected and the Brew button is pressed, the brewer will cycle water from the Carafe(E) through the pump system then blow air through the system leaving the Nano Brewer clean and ready for its next use. See full cleaning instruction on page 16.

### **Brew Button**

The Brew button starts the brewing process. It will also stop the brewing process if it is pressed during a brew cycle. The Brew button is illuminated blue when the brewer is in standby mode and it is illuminated red when in a brew cycle, boil cycle, or clean cycle. If there is no power to the Power Base(I) or if the brewer is not placed on the Power Base(I) or if the Control Knob(A) is set to OFF, the Brew button will not be illuminated.

### **Bold Button**

The Bold button is used to extend the amount of time the Circle Flow Technology is activated by 30 seconds thus providing a bolder cup of coffee. When the Bold function is activated, the Bold button is illuminated red. Pressing the button toggles its state between Off and On.

# IMPORTANT INFORMATION BEFORE USE:



**DO NOT SUBMERGE  
IN WATER**

**IMPORTANT:** Before first use wash the interior of the Carafe(E) and K-Cup® Holder(G) with warm soapy water. NEVER submerge Carafe(E) or Power Base(I) in water. See full cleaning instructions on pages 16.

**IMPORTANT:**

**Never use the Vinci Nano Brewer without water in the carafe.**

Operating without water can cause the temperature to exceed the preset limit; as a safety feature, your brewer will switch off automatically, and the Brew Button will be illuminated purple. This is an indication of overheating due to no water. Once the brewer's temperature returns to its desired range, it can be used again - indicated by a blue "Brew Button."

This safety shut-off function will be activated within 20-60 seconds of exceeding the temperature and should reset within 30 minutes once the temperature has reduced.

To avoid potential malfunction, ensure the carafe contains at least 4oz of water before powering up your brewer.

If you have removed and reattached your brewer to its power base while it is still too hot, the Brew Button will instantly turn purple when you begin a new brew cycle, preventing it from starting.

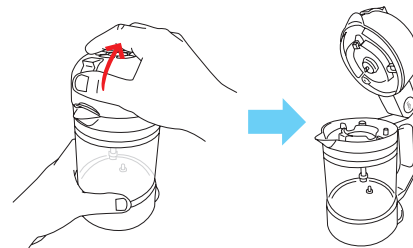
**WARNING:** Even with this safety feature, it is possible that overheating will cause a permanent failure of the brewer. It is critical to never activate a brew cycle without water in the carafe.

**CAUTION:** DO NOT add cold water to the carafe to attempt to cool it, as this could lead to a malfunction or breakage.

# HOW TO USE YOUR NANO BREWER

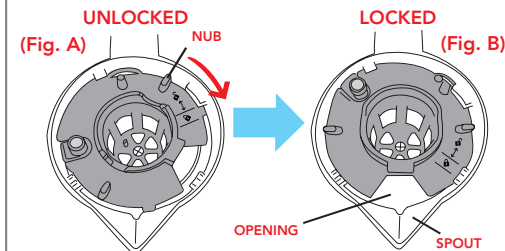
**IMPORTANT:** Make sure that all surfaces are all clean of any unwanted minerals or coffee grounds before using. This will ensure that the brewer will provide the best cup of cold brewed coffee.

## 1 GETTING STARTED



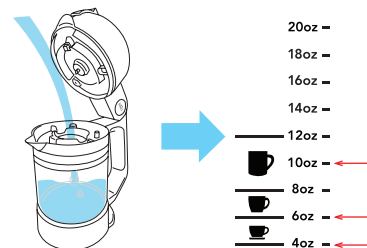
Securely hold the base of the Carafe(E) and slide your finger in an upward motion on the Lid Release(C) to unlock and open the Control Lid(B).

## 2 LOCK K-CUP HOLDER



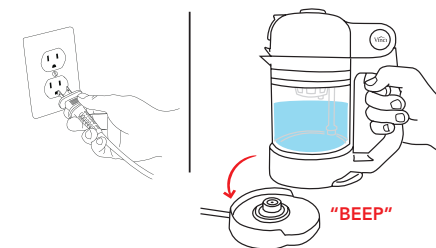
Make sure that the K-Cup® Holder(G) is secured and "Locked" in the correct position. Illustrations to the left shows the Unlocked (Fig. A) and Locked (Fig. B) position.

## 3 ADD WATER



Fill the Carafe(E) with fresh, room temperature filtered water to your desired level: The minimum level is 4 oz for the brewer function to work properly. The suggested maximum is 12 oz.

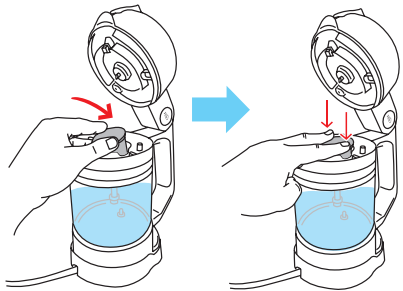
## 4 PLUG POWER



Plug into an electrical outlet and make sure the Power Base(I) is on a dry, flat surface. Place the Nano Brewer onto the Power Base(I).

## USING PREFILLED K-CUP

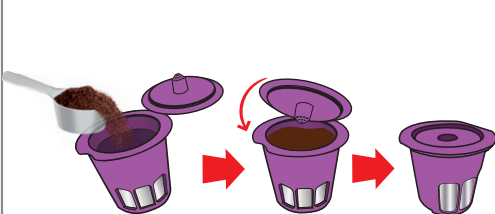
### 5A OPTION A: PRE-FILLED K-CUP



Insert your pre-filled K-Cup into the unit making sure that the bottom is sitting flat against the K-Cup holder. Press down gently to pierce the K-Cup with the brewing needle.

## USING REUSABLE FILTER CUP

### 5B OPTION B: REUSABLE FILTER CUP

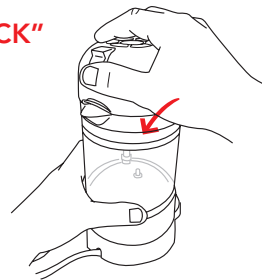


Add 2 tablespoons of your favorite medium ground coffee into your Reusable Filter Cup(J) and snap lid to close.

## FOR OPTION A AND B

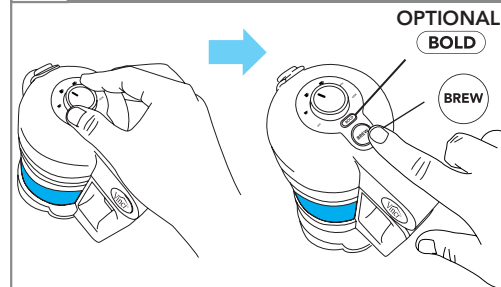
### 7 CLOSE LID

"CLICK"



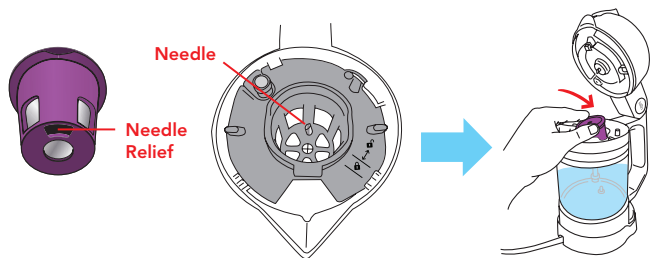
After placing the K-Cup® in the holder, close the brewer by securely holding base of the Carafe(E) and pushing the Control Lid(B) down.

### 8 BREW SELECT / BREW



Rotate the Control Knob(A) to the cup size icon that matches the cup size icon on the Carafe(E) as indicated by the water level in the Carafe(E). Press Optional Bold button then press Brew Button to start brewing.

### 6 NEEDLE RELIEF POSITION



Make sure the Needle Relief lines up with the Needle in the K-Cup Holder then Insert Reusable Filter Cup(J) into the K-Cup Holder(G) in the Nano Brewer and close lid.

#### NOTE:

Refillable Filter Cup will not close if it is not positioned correctly.

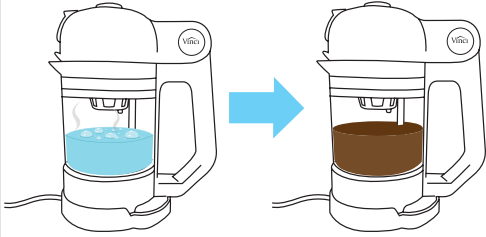
#### IMPORTANT:

If you force the Lid closed with the refillable filter cup positioned incorrectly, you may damage the unit and it will void the warranty.

#### NOTE:

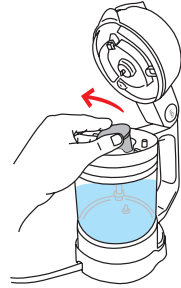
If the K-Cup® Holder(G) is not secured properly, the Lid will not close and it will not properly brew. Refer to step 2 to reposition the K-Cup® Holder(G) .

## 8 BREWING PROCESS



Soon after pressing the BREW button, the water will begin to heat and will begin to brew.

## 9 REMOVE CAPSULE

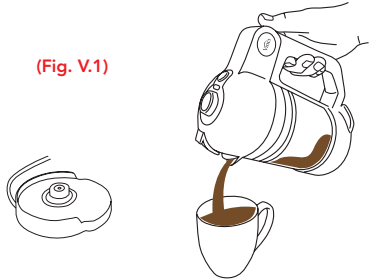


Remove your spent K-Cup® or Reusable Filter Cup(J) before or after you pour your coffee.

### CAUTION:

- Do NOT open Control Lid(B) or remove the Carafe(E) from the Base during the brewing process.
- Do NOT touch the glass portion of the Carafe(E) after the brewing process has begun or for several minutes after, as the glass WILL be very HOT. Only use Handle to move.

## 10 ENJOY!

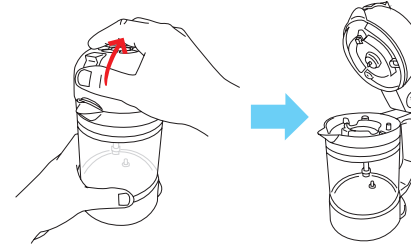


After the brewing process is complete, remove Carafe(E) from Power Base(I) to pour your freshly brewed hot coffee.

## HOW TO BOIL WATER

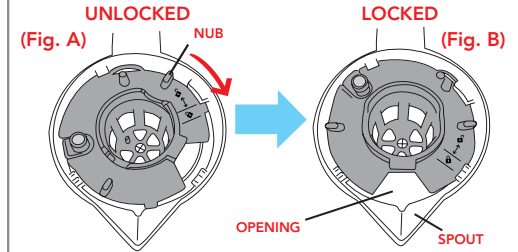
**IMPORTANT:** Make sure that all surfaces are all clean of any unwanted minerals or coffee grounds before using. This will ensure that the brewer will provide the best cup of cold brewed coffee.

### 1 OPEN LID



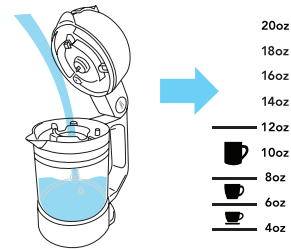
Securely hold the base of the Carafe(E) and slide your finger in an upward motion on the Lid Release(C) to unlock and open the Control Lid(B).

### 2 LOCK K-CUP HOLDER



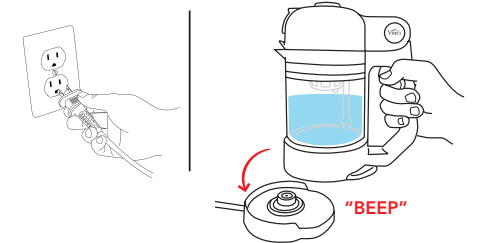
Make sure that the K-Cup® Holder(G) is secured and "Locked" in the correct position. Illustrations to the left shows the Unlocked (Fig. A) and Locked (Fig. B) position.

### 3 ADD WATER



Fill the Carafe(E) with fresh, room temperature filtered water to your desired level: The minimum level is 4 oz.

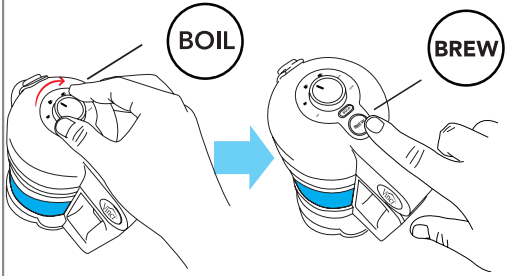
### 4 POWER



Plug into an electrical outlet and make sure the Power Base(I) is on a dry, flat surface. Place the Nano Brewer onto the Power Base(I).



## 9 BOIL SELECT / BREW



Rotate the Control Knob(A) to BOIL and press the BREW button to begin boiling water.

### CAUTION:

- Do NOT open Control Lid(B) or remove the Carafe(E) from the Base during the brewing process.
- Do NOT touch the glass portion of the Carafe(E) after the brewing process has begun or for several minutes after, as the glass WILL be very HOT. Only use Handle to move.

## 10 BOILING PROCESS

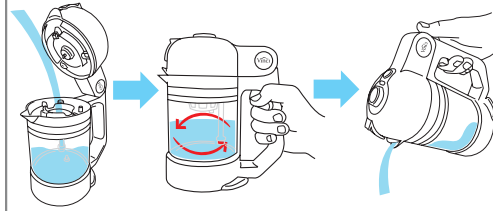


The bottom of the Carafe(E) will be illuminated blue indicating that the water is being heated. When the water reaches the proper boiling temperature, the blue light will turn off.

## CARE AND CLEANING

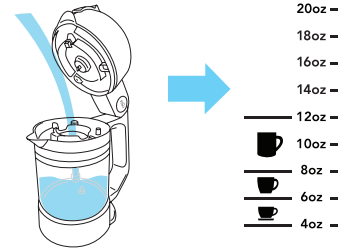
**IMPORTANT:** Make sure that all surfaces are all clean of any unwanted minerals or coffee grounds before using. This will ensure that the brewer will provide the best cup of cold brewed coffee.

### 1 FILL WATER/ SWIRL/POUR



Fill the Carafe(E) with fresh water, swirl and discard.

### 2 ADD WATER



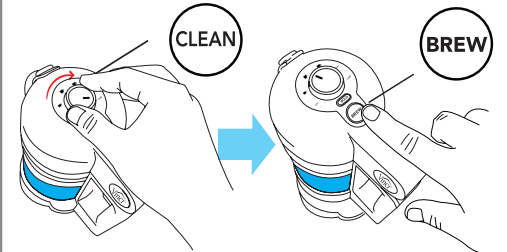
Fill the Carafe(E) with fresh, room temperature filtered water to a minimum of 6oz increment line.

### 3 PLACE ON BASE



Place the Nano Brewer onto the Power Base(I), making sure it is sitting completely flat and securely on the base.

### 4 CLEAN SELECT / BREW



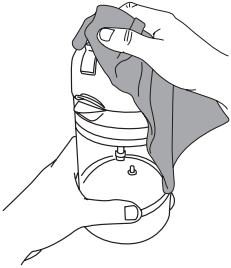
Rotate the Control Knob(A) to Clean and press the BREW button to start the cleaning process.

## 9 DISPOSE DIRTY WATER



After the cleaning process is complete, remove the unit from the Power Base(I) and discard the dirty water into the kitchen sink. If desired, you can repeat steps 1-7.

## 11 WIPE DOWN BREWER



With a clean, damp towel, wipe down the Carafe(E) and any other parts of the unit you feel need cleaning.

## 10 REMOVE K-CUP HOLDER



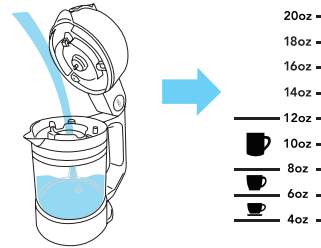
Remove the K-Cup® Holder(G). Wash with warm soapy water, then rinse and let dry.

**IMPORTANT:**  
NEVER submerge the unit in water; doing so will damage the Control Lid(B) and Heating Base and will void the warranty.

## WEEKLY MAINTENANCE

**IMPORTANT:** Make sure that all surfaces are all clean of any unwanted minerals or coffee grounds before using. This will ensure that the brewer will provide the best cup of cold brewed coffee.

### 1 ADD WATER



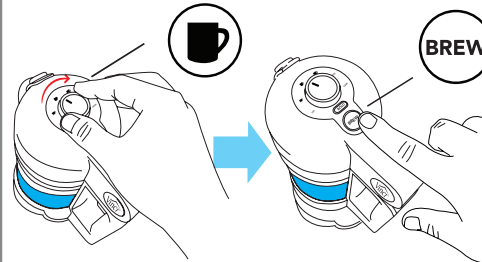
Fill the Carafe(E) with fresh, room temperature filtered water to a minimum of 6oz increment line.

### 2 PLACE ON BASE



Place the Nano Brewer onto the Power Base(I), making sure it is sitting completely flat and securely on the base.

### 3 LARGE BREW SELECT / BREW



Rotate the Control Knob(A) to BOIL and press the BREW button to begin boiling water.

### 4 DISPOSE DIRTY WATER



After the brewing process is complete, remove the unit from the Power Base(I) and discard the dirty water into the kitchen sink. If desired, you can repeat steps 1-4.

## TROUBLESHOOTING

PROBLEM	POSSIBLE CAUSE	SOLUTION
The Control Lid(B) won't stay closed.	<ol style="list-style-type: none"> <li>1. The K-Cup® Holder(G) is not installed correctly.</li> <li>2. The Control Lid(B) is not closed properly.</li> </ol>	<ol style="list-style-type: none"> <li>1. Make sure that the K-Cup® Holder(G) is secured and "Locked" in the correct position. Follow detailed instructions on page 2.</li> <li>2. Open and close the Control Lid(B) down applying some pressure till the Control Lid(B) stays in the closed position.</li> </ol>
The unit is not working and Brew button keeps on blinking blue.	<ol style="list-style-type: none"> <li>1. The Control Lid(B) is not properly sealed shut.</li> </ol>	<ol style="list-style-type: none"> <li>1. Open and close the Control Lid(B) down again, but applying a bit more pressure than the previous time.</li> <li>2. Unit may require factory service. Please contact customer service at 888-735-3621 or email support@vincihousewares.com</li> </ol>
The unit is not turning on	<ol style="list-style-type: none"> <li>1. The contact from the base of the Carafe(E) to the Power Base(I) is not registering.</li> <li>2. The power cord is not properly connected to an electrical outlet.</li> <li>3. The electrical outlet has no power.</li> <li>4. The safety feature has been activated due to brewing without water.</li> </ol>	<ol style="list-style-type: none"> <li>1. Remove the unit from the Power Base(I) and try placing the unit back on the Power Base(I) .</li> <li>2. Make sure the power cord is fully inserted in the electrical outlet.</li> <li>3. Try a different power outlet.</li> <li>4. Let the brewer rest for 30 min.</li> <li>5. Unit may require factory service. Please contact customer service at 888-735-3621 or email support@vincihousewares.com</li> </ol>

## TROUBLESHOOTING

PROBLEM	POSSIBLE CAUSE	SOLUTION
<p>The Brew button is not illuminated.</p> <p>The Unit will not run.</p>	<ol style="list-style-type: none"> <li>1. The Control Knob(A) is in the Off position.</li> <li>2. The Power Cord is not properly connected to an electrical outlet.</li> <li>3. The electrical outlet has no power.</li> <li>4. The safety feature has been activated due to brewing without water.</li> </ol>	<ol style="list-style-type: none"> <li>1. Make sure the Control Knob(A) is in the proper position.</li> <li>2. Make sure the power cord is fully inserted in the electrical outlet.</li> <li>3. Try a different power outlet.</li> <li>4. Let the brewer rest for 30 min.</li> <li>5. Unit may require factory service. Please contact customer service at 888-735-3621 or email support@vincihousewares.com</li> </ol>
My beverage is not hot.	<ol style="list-style-type: none"> <li>1. The Heating Plate(F) is not getting hot.</li> <li>2. The Power Cord is not properly connected to an electrical outlet.</li> <li>3. The electrical outlet has no power.</li> </ol>	<ol style="list-style-type: none"> <li>1. Remove the unit from the Power Base(I) and try placing the unit back on the Power Base(I) .</li> <li>2. Make sure the power cord is fully inserted in the electrical outlet.</li> <li>3. Try a different power outlet.</li> <li>4. Unit may require factory service. Please contact customer service at 888-735-3621 or email support@vincihousewares.com</li> </ol>
<p>The brew button is illuminated purple.</p> <p>The Unit will not run.</p>	<ol style="list-style-type: none"> <li>1. The heating plate is too hot and the safety shut-off function has been activated.</li> </ol>	<ol style="list-style-type: none"> <li>1. Let the brewer rest for 30 min.</li> <li>2. Unit may require factory service. Please contact customer service at 888-735-3621 or email support@vincihousewares.com</li> </ol>

If these troubleshooting tips did not solve your issue, please contact customer support at 888-735-3621 or email support@vincihousewares.com

# WARRANTY

## LIMITED ONE-YEAR WARRANTY

ARM Enterprises, Inc. warrants that your appliance will be free of defects in materials or workmanship under normal home use for one year from the date of delivery. It is recommended that you register your appliance on [vincihousewares.com/product-registration](https://vincihousewares.com/product-registration) so that your purchase information will be stored in our system. ARM Enterprises, Inc. will, at its option, repair or replace a defective appliance without charge upon its receipt of proof of the date of purchase. If a replacement appliance is necessary to service this warranty, the replacement appliance may be new or reconditioned. Replacement appliances and parts are warranted for the remaining portion of the original warranty period. This warranty only applies to appliances operated in the United States and Canada. This warranty gives you specific legal rights, and you may also have other rights that vary from state to state and, in the case of Canada, from province to province.

## WHAT IS NOT COVERED BY THE LIMITED WARRANTY?

THIS WARRANTY DOES NOT COVER CONSEQUENTIAL OR INCIDENTAL DAMAGES SUCH AS PROPERTY DAMAGE AND DOES NOT COVER INCIDENTAL COSTS AND EXPENSES RESULTING FROM ANY BREACH OF THIS WARRANTY, EVEN IF FORESEEABLE. Some states or provinces do not allow the exclusion or limitations of incidental or consequential damages, so the above limitation or exclusion may not apply to you depending on the state or province of purchase. Vinci Housewares product warranty covers manufacturing defects under normal use and maintenance. Our liability is limited to the original purchase price of the unit. Incidental or consequential damages or issues due to improper use, installation, or maintenance are not covered.

## OTHER LIMITATIONS

THIS WARRANTY IS EXCLUSIVE AND IS IN LIEU OF ANY OTHER EXPRESS WARRANTY, WHETHER WRITTEN OR ORAL. IN ADDITION, ARM ENTERPRISES, INC. HEREBY SPECIFICALLY DISCLAIMS ALL OTHER WARRANTIES WITH RESPECT TO YOUR APPLIANCE, INCLUDING ANY IMPLIED WARRANTY OF MERCHANTABILITY OR FITNESS FOR ANY PARTICULAR PURPOSE. Some states or provinces do not allow disclaimers of such implied warranties or limitations on how long an implied warranty lasts, so the above limitation may not apply to you depending on the state or the province of purchase.

## HOW DO YOU OBTAIN WARRANTY SERVICE?

ARM Enterprises, Inc. appliances are high-quality and, with proper care, are intended to provide years of satisfying performance. However, should the need arise for warranty servicing, simply call Vinci Housewares **Customer Service at our toll free phone number 1-888-735-3621**. Please do not return your appliance for servicing without first speaking to ARM Enterprises, Inc. Customer Service to obtain a Return Authorization (RMA) number. ARM Enterprises, Inc. appliances returned without a Return Authorization number will be returned to the sender without servicing.



[www.vincihousewares.com](http://www.vincihousewares.com) | 888.735.3621 | [support@vincihousewares.com](mailto:support@vincihousewares.com)

F/N.v19\_BL