



 *Lulu* DESIGNS
CELESTIAL DAYDREAM


DESIGNER
Stacy King
lulu_designs@mac.com

CREATIVE DIRECTOR
Kristina Saxen
kristina@luludesignsjewelry.com

SALES REPRESENTATIVE
Kat Clare
kat@katclare.com

LULU DESIGNS STUDIO
473 Coloma St. suite A
Sausalito, CA 94965
415.729.9570

LULU DESIGNS FLAGSHIP
30 Princess St. suite B
Sausalito, CA 94965
415.339.8843

 @luludesignsjewelry
www.luludesignsjewelry.com



CELESTIAL DAYDREAM

This season's collection is filled with a mix of symbols and gemstones paying homage to the stars in the sky and the colors of summer's magical sunset.

Centered on the phases of the moon and the symbols that celebrate that connection.

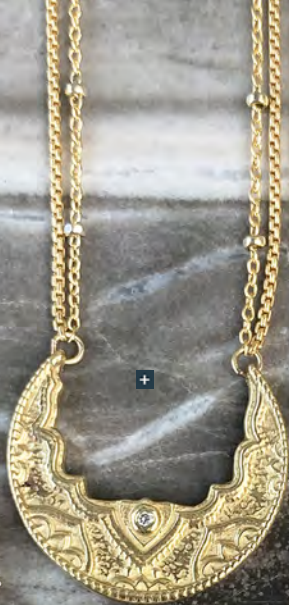
Lulu Designs has artfully captured the mood of the season. Soft, romantic hues of pink, brown, and grey make this collection wearable year round.

Anchored in our dedication to layering, this season's collection offers customers new pieces to add to their existing Lulu Designs' heirlooms.

wear with love . . .







+



ZODIAC COLLECTION

WHAT'S *Your* SIGN?

Astrology has long served as mythology and psychology, opening minds to new perspectives informed by celestial shifts.

We designed our new zodiac collection for those who look to the stars and find themselves.

Twelve vintage-minded talismans showcase each sign of the zodiac, from dreamy, intuitive Pisces to passionate Scorpio. To get truly elemental, look to the diamonds that finish each pendant - a red diamond marks the *fire* signs, green represents *earth*, blue is *water*, and white means *air*.

Whether purchased as a luminous adornment or a highly personal gift, Lulu's constellation of zodiac pendants are destined to become a cultish favorite.







+

+

+

+

+







+

+

+

+

+

+







+

+

+

+

+

+

+

+

+

+



