



# OPERATING GUIDELINES

## SC100™

**ATTENTION!** Do not use the machine before you have read and understood the Instructions for Use Manual.



1. Release the handle to remove the tank assembly.



2. Fill the solution tank with clean water, not to exceed 100° F.



3. The tank cap can be used for dosing the detergent. One full cap is 30 ml giving 1% detergent of the 0.8 gal (3 L) tank capacity. (\*)



4. Connect the power plug to an electrical socket.



5. Turn on the machine with the main switch to "I".



6. Press the black pedal to put the machine in working position.



7. Press the start/stop button to start the machine.



8. Press one of the solution buttons, according to the type of cleaning to be performed:  
1 drop - normal cleaning  
2 drop - heavy duty cleaning



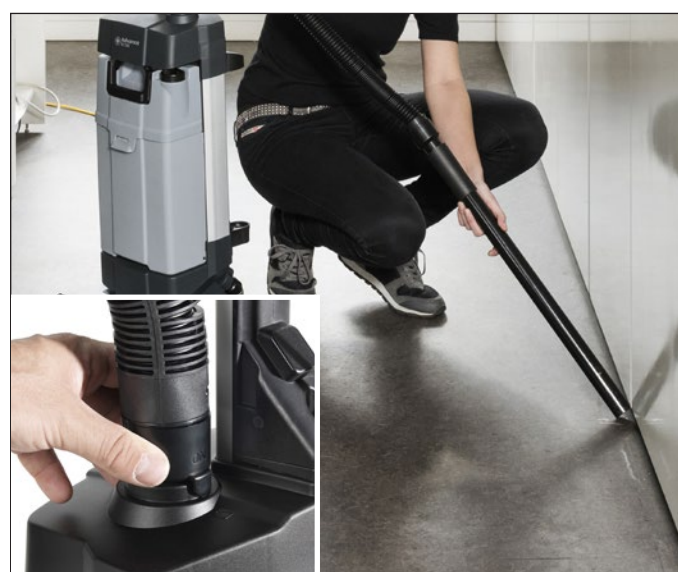
9. Move the machine with the handle and start cleaning the floor.



10. For double scrubbing, flip the pedal to lift/lower squeegees.



11. The red LED blinks when the machine is getting low on solution and has a fixed light when empty. Empty the recovery tank and refill the solution tank to continue working.



12. To use the manual suction hose, press the main button to start the machine in upright position. Turn the hose connection to ON and use the suction tube. When done turn hose connection to OFF. (\*\*)



13. Park the machine in the upright position. Turn off the machine by pressing the start/stop button. Press the main switch to "0".



14. Disconnect the power plug from the electrical socket and rewind the cord starting at the machine and place it in the cord holder.



15. Empty the recovery and solution tank. Clean them with water.



16. Check and clean the solution and vacuum filter regularly.



17. Remove the squeegee bars.



18. Remove the cylindrical brush by turning the side knob clockwise.



19. Clean the squeegee bars and the cylindrical brush with water. Check for wear and replace when necessary.



20. Wipe down the machine using a damp cloth, and where needed use a neutral cleaning product. Then store the machine in a clean and dry place.

(\*) ALWAYS FOLLOW THE DETERGENT DOSING RECOMMENDATION ON THE LABEL OF THE CHEMICAL PRODUCT USED.

(\*\*) THE MANUAL SUCTION HOSE IS INCLUDED ACCESSORY ONLY FOR THE FULL PACKAGE VERSION; FOR THE BASIC VERSION IS AN OPTION.





# TROUBLESHOOTING

## SC100™

**ATTENTION!** Do not use the machine before you have read and understood the Instructions for Use Manual.

The machine doesn't work as it should?



1. Check if the power supply cable is damaged, faulty or disconnected from the electrical mains.



2. The main switch is broken. (\*)



3. The push button panel is broken. (\*)

(\*) For these causes the maintenance procedure must be performed by an authorized Advance Service Center.

For further information refer to the Service Manual, available at any Advance Service Center.

The suction doesn't work as it should?



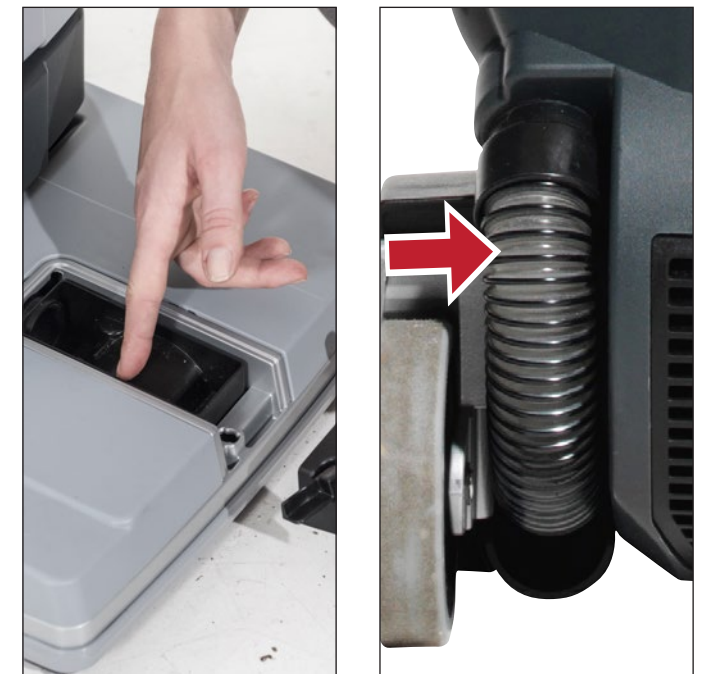
1. If applicable, check if the manual suction hose connection is turned to "OFF".



2. Check if the recovery tank is full.



3. Check if the squeegee bars are dirty or the blades are worn or damaged.



4. Check if the inspection compartment is dirty. Check if the recovery vacuum hose is disconnected or dirty.

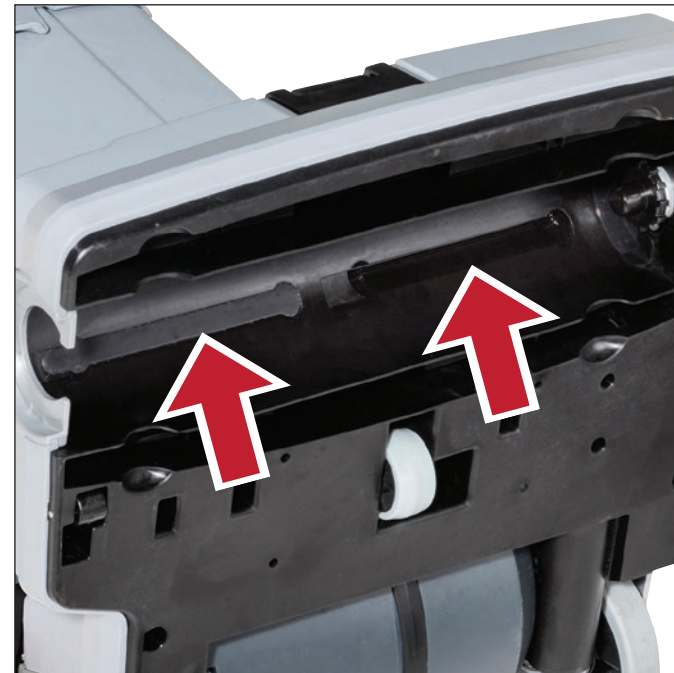
The machine doesn't clean as it should?



1. Check if you have selected the right solution settings or the solution tank is empty.



2. Check if the solution filter is dirty. Clean it if needed.



3. Check if the holes in solution dispensers are clogged. Remove them and clean if needed.

The brush doesn't work as it should?



1. Check if the cylindrical brush is correctly installed and not worn out. Replace when necessary.