

# PULSAR+ Carpet Extractor

Item# PE060-G15-U (Pulsar+ – 15 gallons)



15 Gallon  
Capacity



Cold -  
Not Heated



100  
p.s.i



Single Airwatt  
Motor

**Powr-Flite®**

## A NEW FRONTIER IN PORTABLE EXTRACTORS:

### PERFORMANCE AND PROTECTION

Featuring the industry's only vacuum motor designed specifically for wet pickup, providing unmatched performance and moisture protection.

### SIGNIFICANTLY REDUCED DOWNTIME

Purpose-built design provides quick access to internal components and drastically reduces downtime associated with service and maintenance.

### FREEDOM TO MOVE

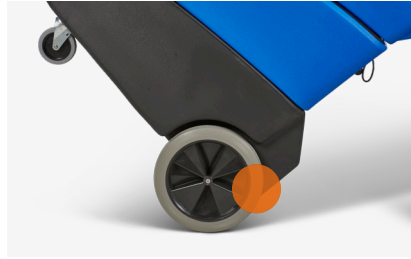
Unparalleled storage and mobility, taking the hassle out of moving from room to room and job to job.

# SPECS:

PULSAR+	
<b>MODEL</b>	PE060-G15-U
<b>SOLUTION TANK</b>	15 Gallons
<b>VAC MOTOR</b>	Single Airwatt (625 Watts)
<b>CFM</b>	133
<b>WATERLIFT</b>	125"
<b>SOLUTION PUMP (PSI)</b>	100
<b>HEATER</b>	None
<b>MAX HEAT</b>	N/A
<b>VACUUM/SOLUTION HOSE</b>	20 Ft. Outsider Hose
<b>VACUUM HOSE DIAMETER</b>	1.5"
<b>CORD CONFIGURATION</b>	Single Circuit
<b>FRONT WHEELS</b>	4" Casters
<b>REAR WHEELS</b>	12"
<b>WEIGHT (LBS)</b>	136
<b>DIMENSIONS (LxWxH)</b>	36.5"x23.5"x45.5"

## ACCESSORIES

PART #	DESCRIPTION
<b>WANDS</b>	
PFX-KIT1	1 Jet Wand, 200 PSI
PFX-KIT2	1 Jet Wand, 500 PSI
WW1000-2	Wonder Wand™, 2 Jet, 1000 PSI
<b>HAND TOOLS</b>	
AA192	Stair Tool, 6" Head, 800 PSI
AA161	Detailer Tool, 3 1/2" Head, 500 PSI
AA144DC	Upholstery Tool, 4" Head, 500 PSI



### STAIR CLIMBER

Large 12" rear wheels and unique stair-assist design take the strain out of sliding the unit up and down stairs.



### LOADING WHEELS

Handle-mounted transport wheels for easy loading and unloading.



### ON-BOARD STORAGE

Keep everything you need for the job on-board with dedicated storage for the wand, hose and power cords.



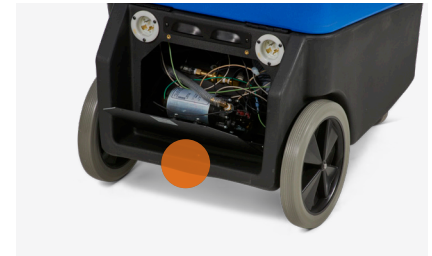
### SIMPLE OPERATION

Simple to use and understand controls, all user-facing and conveniently placed within reach.



### CLAMSHELL DESIGN

Easy access to internal components, drastically reducing downtime for repairs and maintenance.



### REAR SERVICE PANEL

Immediate access to the pump for service, if needed.

## THE AIRWATT MOTOR DIFFERENCE

- The Pulsar's Airwatt motor is the industry's only purpose built vacuum motor for wet pick-up, providing unmatched performance and protection.
- Patent-pending, sealed bearings prevent exposure to cleaning chemicals and moisture for longer motor life.
- Curved "Eternity" brushes provide three times longer motor brush life (1,500+ hours).

Bearings moved to clean dry area of motor

Additional protection from relocated cooling fan (between fan system and bearing)

Isolated with a seal

Additional bypass prohibits water near dry area - secondary bearing protection

