



14" Natural Fiber Floor Tool w/o Front Cut-Out 900-0036-O



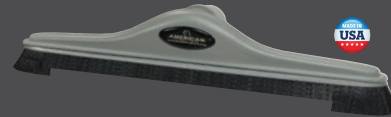
14" Scalloped Floor Tool 901-0028



14" Squeegee Floor Tool 900-0063

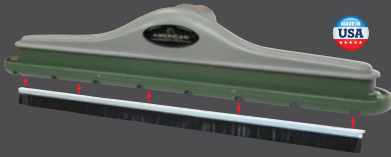


14" Smooth Glide Floor Tool 901-0027

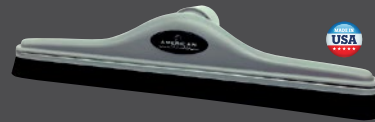


14" Nylon Brush Floor Tool w/ Front Cut-Out 901-0029

(THIS FLOOR TOOL IS SOLD WITHOUT THE BRUSH TO SLIDE EASIER WITH HIGH POWERED VACUUMS)



14" Smooth Glide Floor Tool w/ Brush 901-0027-B



14" Nylon Brush Floor Tool w/o Front Cut-Out 901-0030



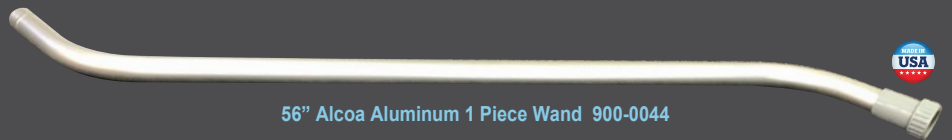
14" Natural Fiber Floor Tool w/ Front Cut-Out 900-0036



Display Box 900-0BOX



56" Alcoa Aluminum 2-Piece Wand 900-0028



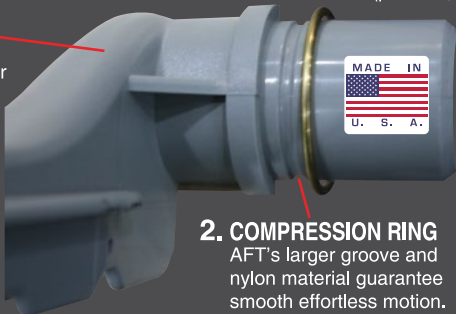
56" Alcoa Aluminum 1 Piece Wand 900-0044

USA vs. CHINA TOOLS

(pictured, ring is offset for size)

1. BODY

Premium nylon, impact and wear resistant.

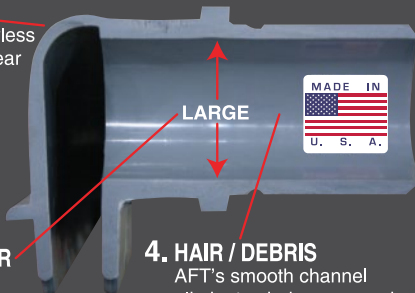


2. COMPRESSION RING

AFT's larger groove and nylon material guarantee smooth effortless motion.

3. MOLDING

1-Piece design, flawless performance and wear characteristics.



LARGE

5. INSIDE DIAMETER

This smooth bore design is larger with 14% more air flow.

4. HAIR / DEBRIS

AFT's smooth channel eliminates hair snags and debris clogs.



1. BODY

Molded from soft plastic. This two-piece design is susceptible to premature wear. You can twist/rotate the post from tool.

2. COMPRESSION RING

This tool has a small groove and soft material which allows the ring to gall the plastic causing premature failure and poor tool rotation.

3. MOLDING

This 2-piece design is innovative but flawed. It allows the manufacturer to use metric or standard adapters on the same mold. The design is wear susceptible and leaks air through the seam.



SMALL

4. HAIR / DEBRIS

Look closely, this 2-piece design has two major hair snag areas. From the outside it looks normal but the cut away clearly shows the design flaw.

5. INSIDE DIAMETER

This 2-piece press fit design steps down in size restricting air flow.