

OWNER'S MANUAL

READ THIS MANUAL CAREFULLY BEFORE OPERATING



FF1500HD
1/4HP Low Profile Air Mover

CF1800HD
1/3HP Air Mover



PurchaseDate: _____

SerialNumber: _____

PurchasedFrom: _____

Thank you for purchasing this DIAMOND product. Please read the instructions carefully and follow all warnings. All DIAMOND products are manufactured to be simple to use and provide years of worry free service when the recommendations in this manual are followed.

Please call DIAMOND at 1 (888) 768-5091 with any questions or concerns.

WARNINGS

- Do not move or carry the blower while it is operating. When the blower is operating, the powerful airflow can cause unpredictable movement.
- NEVER allow children to play with or around blower.
- Do not alter or modify your blower in any way. Use only replacement parts authorized by OdorStop. Modifications or use of unauthorized parts could create a hazard and will void your warranty.
- Store blower in a clean, dry environment. Do not store outdoors or allow water inside the unit's motor. If the motor becomes wet, allow it to thoroughly dry before use.
- Blower should never be operated near water as it will create a risk of serious injury from electrical shock.
- Handle unit with care to avoid causing damage or injury.
- Blower should always be operated on a flat surface. Do not operate where unit could fall, or on slippery surfaces, as this could increase the chance of injury, fire, or electrical shock.
- Keep all materials, liquids, and gases from being drawn into blower and never operate unit without factory installed safety screens in place.
- Do not use blower near combustible gas, or for circulating hot air as unit could melt and cause a fire or electrical hazard.
- Do not take blower apart or repair it unless you are qualified to do so. Never repair or service unit while blower is plugged in.
- Make sure the air intake and outlet are free from all materials and away from obstructions, as any restrictions may cause the blower to overheat and cause a shock or fire hazard.

OPERATION

This FF1500HD00 low profile air mover is designed for floor drying, water damage restoration, and ventilation.

- 1) Place the blower on a level and stable surface.
- 2) Plug the blower into a grounded outlet with the correct voltage and amperage. For maximum protection against electrical shock, ALWAYS use a circuit that is protected by a ground fault circuit interrupter. If you are unsure about the outlet, check with a qualified electrician or service person.
- 3) Rotate the switch to desired speed setting and check that the blower operates properly before letting it run.

AUXILIARY OUTLET

This blower is equipped with a built-in GFCI that allows you to “daisy chain” together multiple units in order to operate in large areas where power outlets are limited or not available. All other warnings for use of this blower should be strictly adhered to.

Carpet Clamp

This blower is equipped with a carpet clamp, which will greatly decrease the time it takes to dry carpet and padding by blowing air under the carpet. Simply lift a corner of the carpet and place the blower at the edge of the carpet. Secure the edge of the carpet to the blower by lifting the clamp, and pinching the carpeting between the blower body and the clamp. Turn the blower on and allow air to blow under the carpet.

Note: This feature cannot be used with carpet that is permanently attached to the floor (i.e. glued down, stapled, etc.) since attempting to pull the carpet up could result in damage. Please consult a carpet professional if unsure of how the carpet is installed.

GROUND FAULT CIRCUIT INTERRUPTER (GFCI) OUTLET

The GFCI protects the user from potential electrical shock. Should it detect a sudden ground fault, the GFCI will interrupt the current and shut the unit off. It will also fault/trip when a short circuit or overload occurs. If the GFCI faults/trips, unplug the unit, and look for potential hazards such as standing water, a damaged cord, etc. Once the problem is corrected, plug unit back in, push the “Reset” button, located on the GFCI faceplate, and re-start the blower. If blower does not re-start, please refer to the troubleshooting section of this manual.

GROUNDING INSTRUCTIONS: This blower MUST BE grounded. Grounding provides a path of least resistance for electric current to reduce the risk of electric shock. This blower is equipped with a cord featuring a grounding plug which must be inserted into an appropriate outlet that is in compliance with all local codes and ordinances. Check with a qualified electrician or service person if you are in doubt as to whether the outlet is properly grounded. Never modify the power cord in any way.

POWER CORD WARNINGS: Never operate units with damaged power cords or damaged extension cords as this may lead to electrical or fire hazards. Never unplug the unit by pulling the cord. Grasp the plug firmly and pull straight out. Take precautions not to use the cord in a way where damage may occur. Keep cords away from all water and heated surfaces. Inspect cords before each use and replace cords that show any sign of damage.

EXTENSION CORDS WARNINGS: Extension cords must be grounded and be able to deliver the appropriate voltage to the unit. Extension cords up to 25 feet long should use 14 AWG wire. Cords up to 50 feet long should use 12 AWG wire. When operating the unit outdoors, do not use an extension cord.

MAINTENANCE

- Inspect the electrical cord and wiring for damage or discoloration. NEVER use a blower that has a damaged cord as it could cause an electrical shock or fire.
- Inspect for loose fasteners.
- Clean safety screens of the unit.
- Listen for abnormal sounds and shut unit off immediately upon hearing unusual noises.
- Keep unit clean.
- Use compressed air or a vacuum to remove lint and other debris from the motor, inlet, or fan wheel.
- Do not use a pressure washer, water hose, or other water source to clean the unit.
- The blower has sealed bearings and cannot be lubricated. No oiling is necessary.

For information about authorized repair and maintenance call DIAMOND at 1 (888) 768-5091.

SPECIFICATIONS

MODEL:	FF1500HD
HP:	1/4
Power:	115 Volts, 60 Hz
Switch:	2 Speed
Amps:	2.1 amps
RPMs:	1100 - 1400

MODEL:	CF1800HD
HP:	1/3
Power:	115 Volts, 60 Hz
Switch:	2 Speed
Amps:	2.9 amps
RPMs:	1200 - 1400

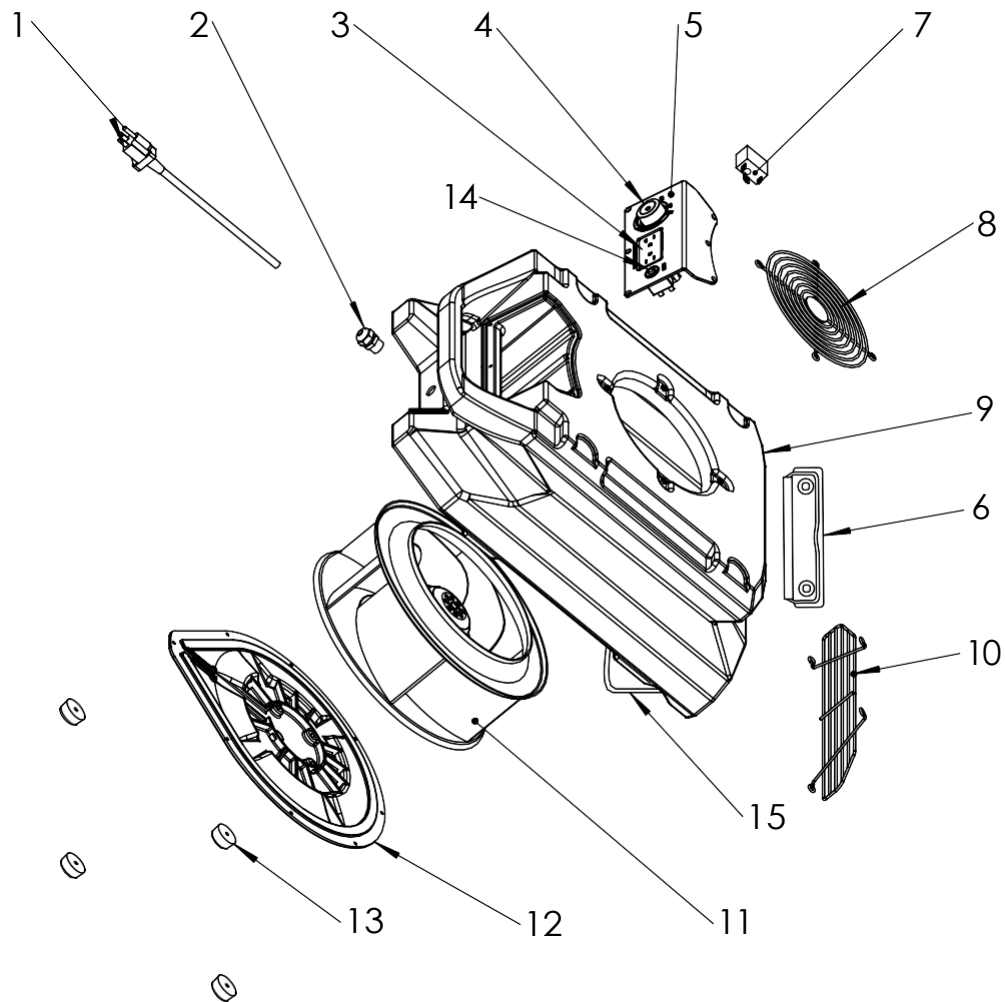
Specifications are subject to change without notice.

TROUBLESHOOTING

PROBLEM	POSSIBLE CAUSE/SOLUTION
Blower does not turn on	<ul style="list-style-type: none"> • Switch not turned on – turn on • Circuit breaker or GFCI has tripped - reset • Loose wire – tighten • Faulty switch - replace
Blower starts and then shuts off	<ul style="list-style-type: none"> • Obstructed inlet/outlet – removed obstruction • Faulty motor - replace
Blower vibrates	<ul style="list-style-type: none"> • Motor shaft is bent – replace motor • Fan blade is bent – replace • Excessive dirt built up on fan blade – clean
Blower makes scraping noise	<ul style="list-style-type: none"> • Damaged housing – replace housing or entire unit • Damaged fan blade – replace • Damaged motor shaft – replace motor
Motor makes noises, but blower won't turn on	<ul style="list-style-type: none"> • Damaged/faulty motor or motor shaft – replace • Broken/loose wire to capacitor – tighten • Damaged/faulty capacitor – replace • Damaged housing/fan so fan will not spin – replace housing or fan wheel • Motor shaft set screw holding fan wheel is loose - tighten

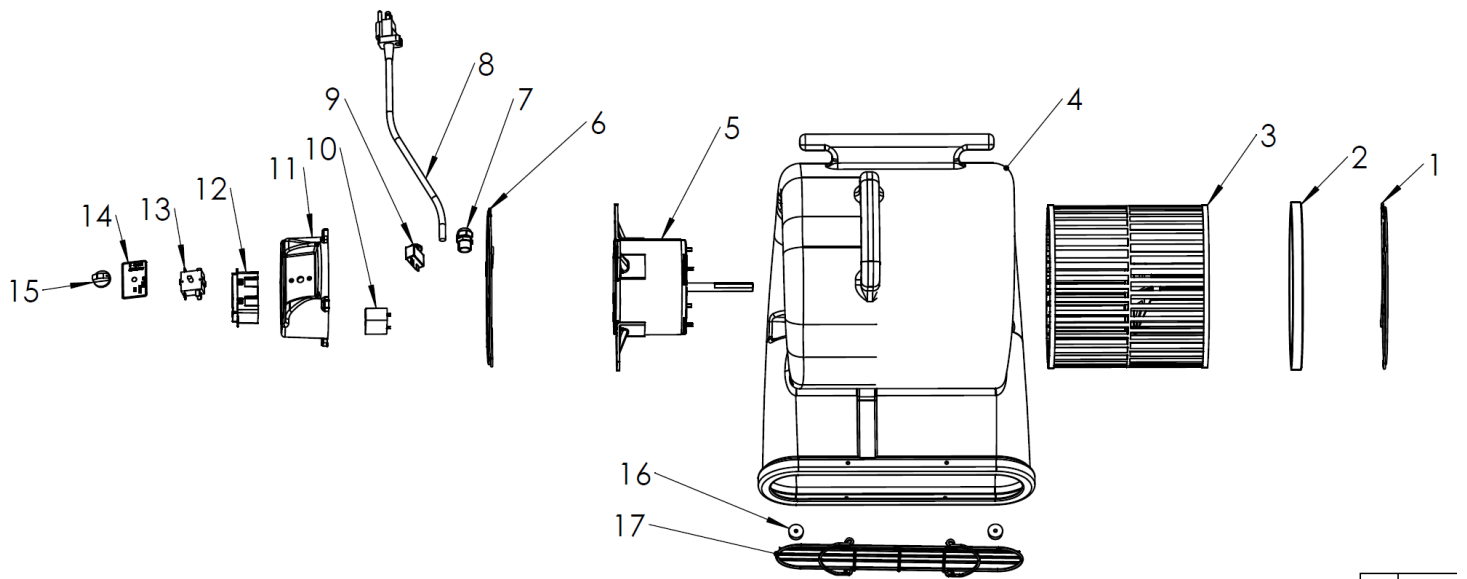
For problems not listed above, contact our service department at 1 (888) 956-7468.

FF1500HD PARTS LIST



Ref	Part Number	Description	Qty Req
1	FF1500HD01	25ft Power Cord	1
2	FF1500HD02	Water Proof Connector	1
3	FF1500HD03	GFCI Outlet	1
4	FF1500HD04	2 Speed Switch	1
5	FF1500HD05	Switch Panel	1
6	FF1500HD06	Carpet Clamp	1
7	FF1500HD07	Capacitor	1
8	FF1500HD08	Air Inlet Grill	1
9	FF1500HD09	Housing	1
10	FF1500HD10	Air Outlet Grill	1
11	FF1500HD11	Motor	1
12	FF1500HD12	Motor Mounting Plate	1
13	FF1500HD13	Rubber Foot Pad	4
14	FF1500HD14	Reset Button Assembly	1
15	FF1500HD15	Kickstand	1

CF1800HD PARTS LIST



Ref	Part Number	Description	Qty Req
1	CF1800HD01	Inlet Griller	1
2	CF1800HD02	Inlet Air Guide	1
3	CF1800HD03	Fan Wheel	1
4	CF1800HD04	Fan Housing	1
5	CF1800HD05	Fan Motor	1
6	CF1800HD06	Side Griller	1
7	CF1800HD07	Cord Connector	1
8	CF1800HD08	Power Cord	1
9	CF1800HD09	Circuit Breaker	1
10	CF1800HD10	Capacitor	1
11	CF1800HD11	Control Box	1
12	CF1800HD12	GFCI	1
13	CF1800HD13	Switch	1
14	CF1800HD14	Switch Label	1
15	CF1800HD15	Switch Knob	1