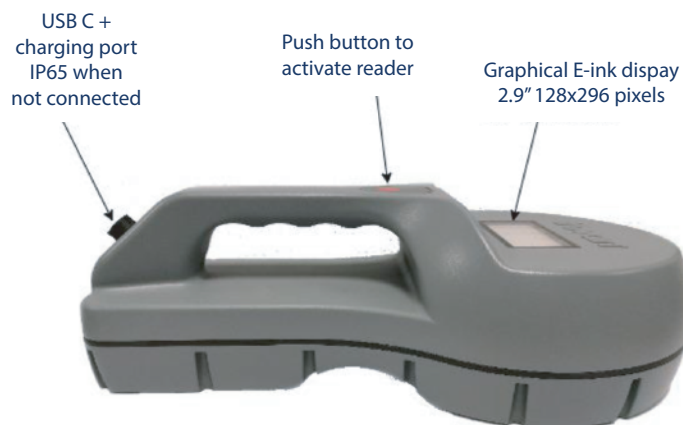


Follow the steps below to start using your GR252 microchip reader. If you have any questions, feel free to contact us.

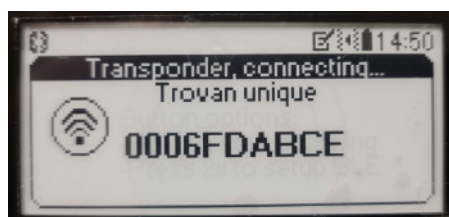
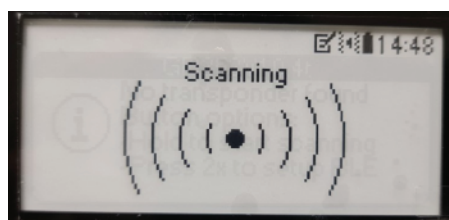
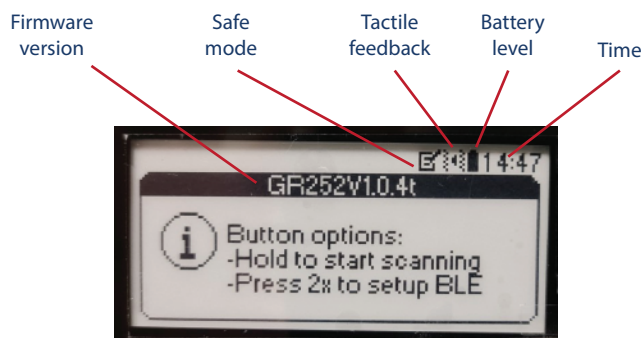


### About GR252

- The GR252 is a robust handheld reader with a multi coil antenna to enable the best reading performance. The reader has a E ink display that has good readability even if used in direct sunlight.
- The Li-ion battery has a capacity of 2250mA and can be charged via the external IP65 connector using the accompanying charger. Fully charging the battery takes about 10h, a fully charged battery gives 4h of continuous reading time.
- The housing of the decoder is IP65 protected.  
Dimensions: 32cm length X 18cm wide where the antenna is located.  
Weight: 1.3kg

### Content of package:

- GR252 handheld scanner, Li-Ion battery integrated
- Battery charger with separate power lead
- USB serial cable



### Display:

- The E ink display is 2.9" (128x296 pixels) and is activated after pushing the button.
- Below a description of the Icons that are show in the top line of the display.

### Scanning a tag:

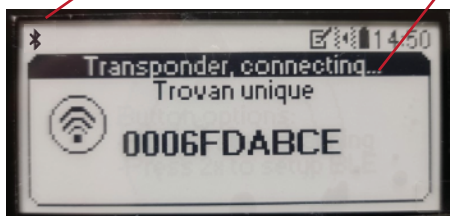
- Press the button briefly to put the reader in standby, it will optionally show the last code read (if activated via the PC companion software).
- Now press the button and hold to start scanning. The display will indicate the antenna is active.
- If a successful read is done the ID number will be shown on the display.
- In this case, the ID number is stored with date and time.

Follow the steps below to start using your GR252 microchip reader. If you have any questions, feel free to contact us.

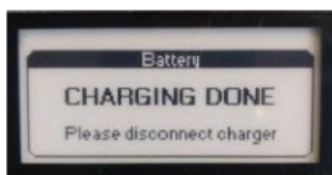
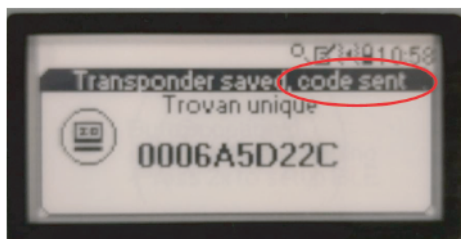
BLE  
connecting



[1] BLE  
connected



[2]



### Connect via BLE to external device

- To link the GR252 via Bluetooth Low Energy (BLE) to a smart-phone or tablet., double press the button in standby mode and the display will show it is connecting to the external device.
- When the reader is connected via BLE to the external device it is visible in the display via the icon in the left upper corner [1], after a tag is read the reader will try to connect to the paired device [2].
- The display will inform the user that the transmission was successful or not.

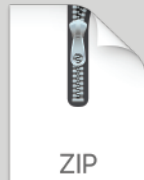
### Charging the battery:

- The reader is delivered with a battery charger. Simply connect the circular connector to the connector on the back of the reader to start charging. The reader has an electronic charging circuit that monitors the battery.
- On the display you can see the progress of the battery charging.
- To connect the charger, align the white arrow on the charging cable with the white line on the reader, push it in and then quarter turn to your right.
- Charging an empty battery might take up to 5 hours.
- Then the display will show that charging is 100% and has finished

Follow the steps below to start using your GR252 microchip reader. If you have any questions, feel free to contact us.

**Software Link**

**Software Manual**



### Software

- Using the PC software you can change the reader settings. The Wizard is self-explaining!
- The reader settings can be changed via the software. Software can be downloaded from Microchips Australia website <https://microchips.com.au/pages/gr252-support>

Some of the options in the software wizard are:

- Use custom names
- Show last code after short button press
- Shutdown time after reading a tag
- Buzzer time
- Tactile feedback
- Save code (with date & time)
- Send scanned code via BLE or USB

