

NOW YOU CAN HAVE A FLUSH FINISH FROM INSIDE TO OUT

Right now the expectation is for a flush finish from the interior to the exterior. However, it is a common problem for sliding door tracks to leak water inside building structures which can cause damage. What's more, local regulation in countries such as the UK and Australia require that all flush finish door tracks are connected to a drainage point to carry water away from the track and into 'an actual drain'. Not just somewhere down below. Aquabocci has developed a fully integrable product featuring an adjustable EPDM membrane that

sits below the door track providing complete drainage in the most minimal way possible.

With a double entry drainage point water is not only drained from the tiled surface but most importantly from the holes in the base of the door track.

Based on our existing lineal design the Blade R-47 drain is an off the shelf channel drainage system made up of straight sections, corner sections and fitting components that provide a sleek solution in the most minimal way possible.

Bläde **R-47**
by aquabocci



reddot award 2019
winner

FUNCTION

The Blade R-47 Threshold Drain is made up of 4 main features.

- 1 Aluminium Blade grate
- 2 PVC channel
- 3 EPDM membrane "Drainage Technique"
- 4 Sections and component system

01

Aluminium Blade Grate

The aluminium Blade grate has been manufactured using extruded aluminium anodised to 35 micron.

The punched holes to allow the water to pass through into the PVC channel and can be easily lifted out of the PVC channel using the aquabocci key.

Anodised aluminium has been chosen for its manufacturing flexibility and wide range of colour options.



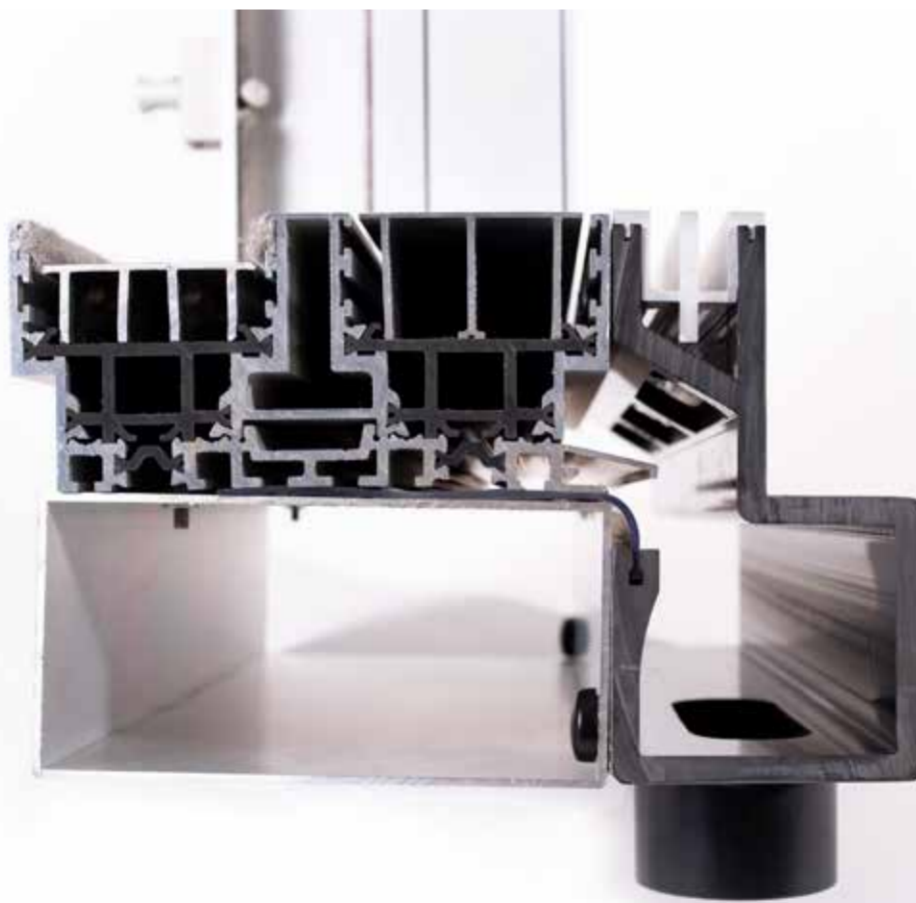
A THRESHOLD DRAIN THAT DELIVERS COMPLETE DRAINAGE IN THE MOST MINIMAL WAY POSSIBLE

02

A Drain Channel... Like No Other Drain Channel

The drainage channel is manufactured from extruded PVC with punched holes in the top part of the profile to allow the water to pass through into the PVC channel.

The channel has an open side entry point which includes a groove to accommodate the EPDM membrane sleeve that allows the water to pass into the channel. The drainage channel is manufactured from extruded PVC with punched holes in the top part of the profile to allow the water to pass through into the PVC channel.



04 Fitting Component System

The fitting components allow for the straight sections and corner sections to be joined together to create any type of custom shape. They also include the PVC spigot pipe that is glued to the underside of the PVC channel in the exact location of your groundwork pipes allowing for an easy and accurate installation.

A water tight seal is created between the PVC and the EPDM using stainless steel screws provided in each package.

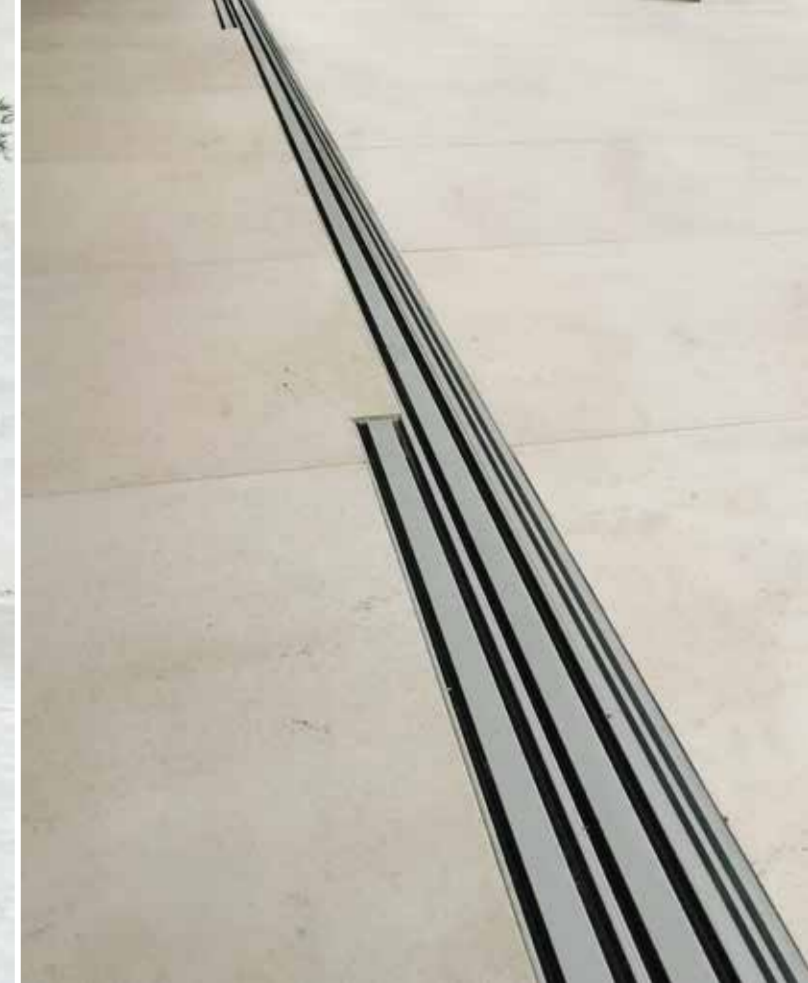
03

EPDM membrane "Drainage Technique"

An important feature of the Blade R-47 is the EPDM membrane which acts as a water barrier between the drain and the door track.

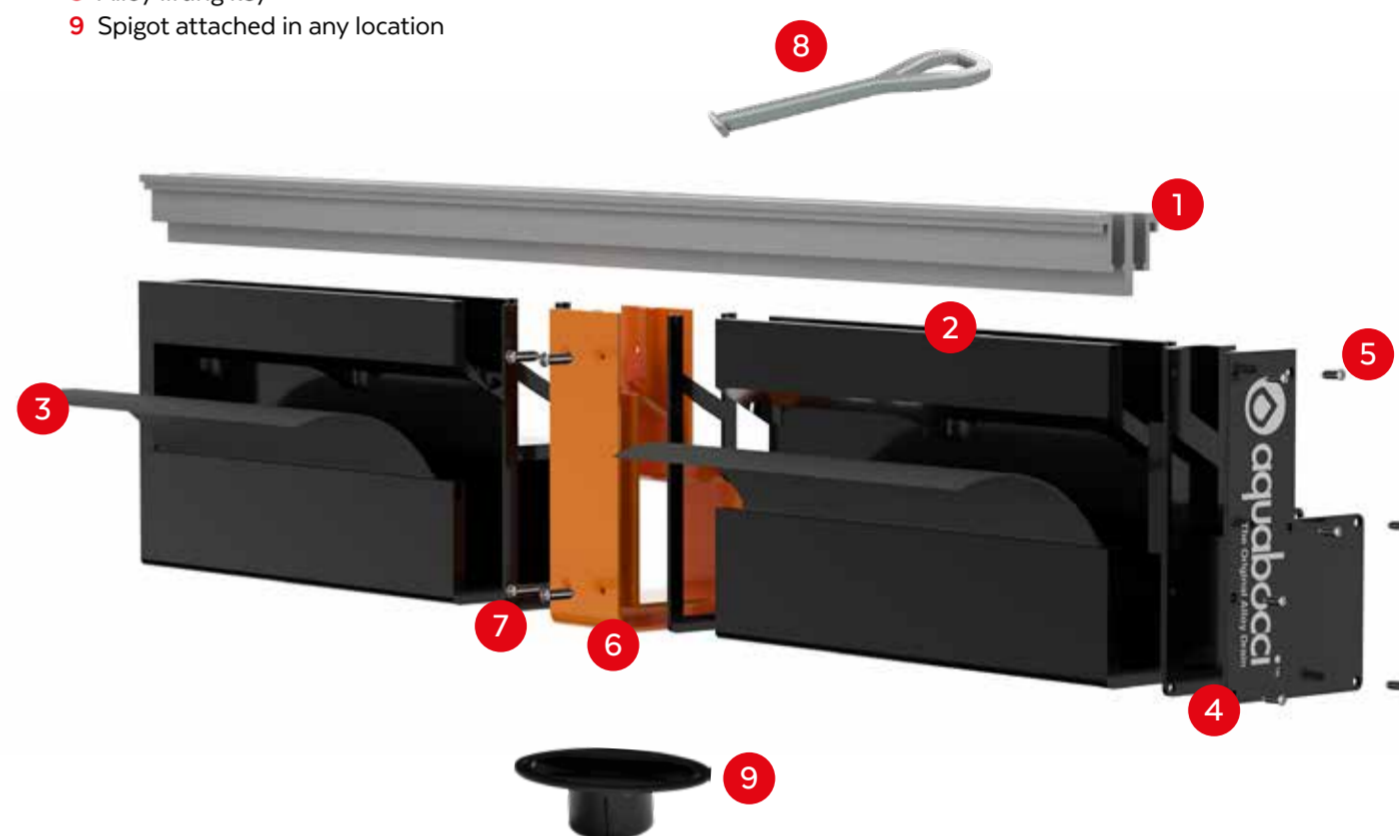
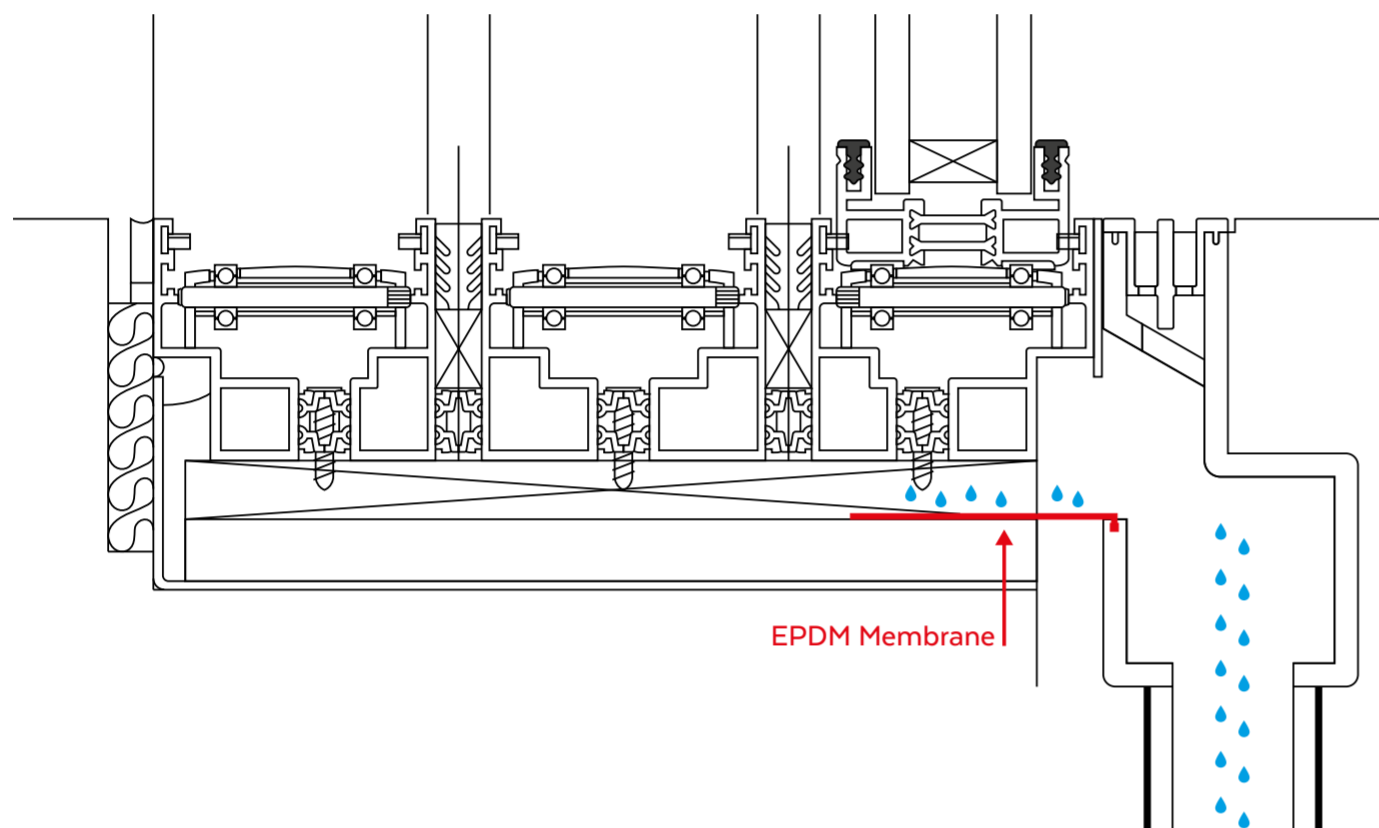
The EPDM membrane sits directly below your sliding door system and collects the water from the drainage holes in the door track, this is the process that we call "DRAINAGE TECHNIQUE". EPDM allows the system to fit any thickness between 25mm and 68mm.





A THRESHOLD DRAIN LIKE NO OTHER DRAIN

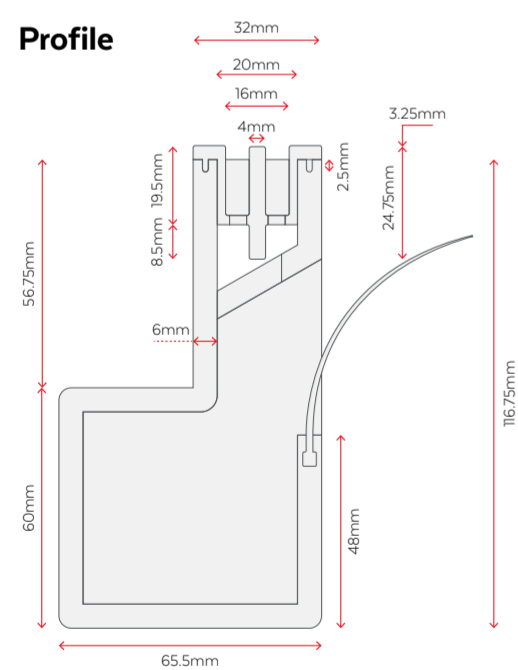
- 1 Marine grade grate
- 2 PVC channel
- 3 EPDM membrane sleeve
- 4 End caps with EPDM gasket
- 5 Screws for end caps
- 6 Connector with EPDM gasket
- 7 Screws for connector
- 8 Alloy lifting key
- 9 Spigot attached in any location



BLADE R-47 THRESHOLD

The Blade R-47 Threshold Drain has an open side entry point that allows the water to be carried from the door track into the drainage channel, whilst also draining water from the surrounding surface areas through the top entry point. The double entry point has been meticulously created with precision and function in mind to allow for a flush finish to flow from the interior to the exterior.

Profile



Lengths



Performance and finish

LOCATIONS	Bi-fold track doors and thresholds
FLOW RATES	90 litres per minute
SLIP RATING	Optional Aquabocci WunderGrip (CSIRO R-13) / Non-Slip finish available on all Aquabocci products
ANTI CORROSION	Guaranteed not to rust, corrode or tea stain around salt water or chlorine
HEELGUARD SAFE?	Yes
FUNCTION	Can be cut to any length
AQUABOCCI CUSTOM	4 colours available

System fittings

A unique feature of the Blade R-47 is an EPDM silicon sleeve that is connected to the side entry point of the channel as well as sitting below the door track extrusion. The EPDM silicon sleeve acts as an extra water barrier and allows the system to fit any threshold thickness, whilst maintaining a flush

surface at finished floor level. Corner pieces, end caps and connectors also have EPDM rubber seals which are screwed into place for fast and easy installation. With 4 stunning colours to choose from the only limit is your imagination.

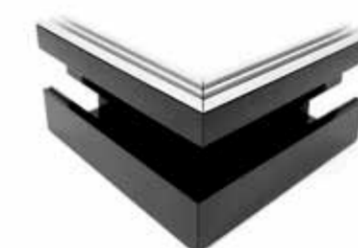
Connector

With EPDM seals and screws



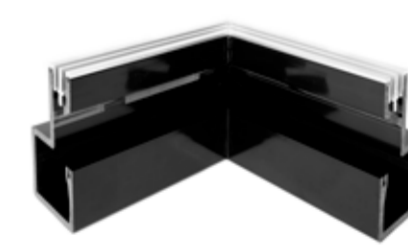
Corner

Available with both internal and external side entry point



External Corner

This item requires 2 connectors. Includes a perfectly mitre cut metal grate and pre-welded PVC channel.



Internal Corner

End Cap

With EPDM seals and screws



Oval Spigot

Internal dimension: 80mm long x 20mm wide



Colours



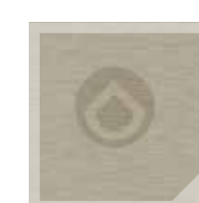
GT Silver



Titanium



Black



Champagne