



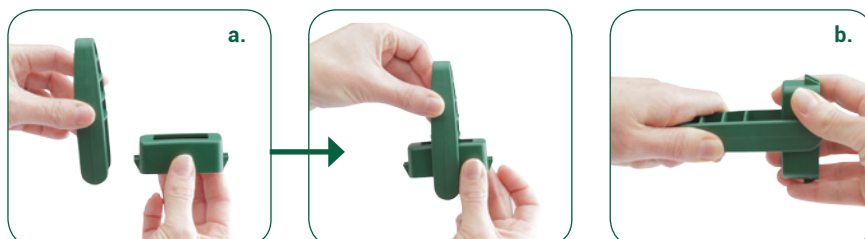
Makes it easy to turn the tap on or off.
Arthritis-friendly



Assembly Instructions

Attach Part A (Tap lever) to Part B (Housing unit)

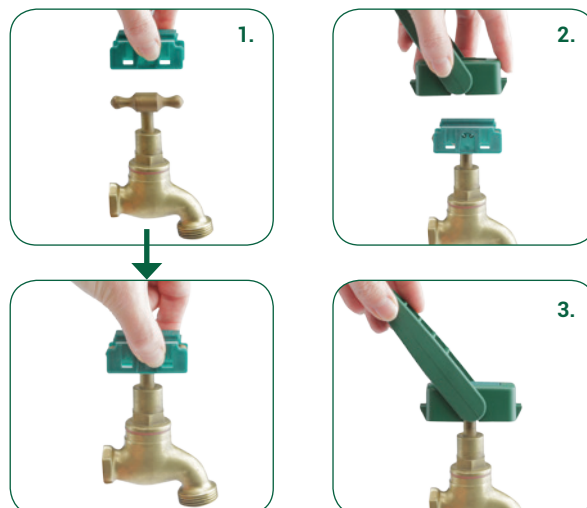
- by sliding Part B into Part A;
- then pull apart to connect.



- TIPS**
- Ensure you hold the pieces as per the image to ensure correct assembly.
 - If needed, put the parts onto a hard surface and push to click into place.

Installation

- Take Part C and place over the top of the tap.
- Take combined Parts A&B and push over Part C.
- The Easy Tap Turner is installed correctly if the lever can be lifted over the the top of the tap.



Using the Easy Tap Turner

If your tap is close to the wall, simply turn the lever 180 degrees then flip the handle over and repeat the movement.