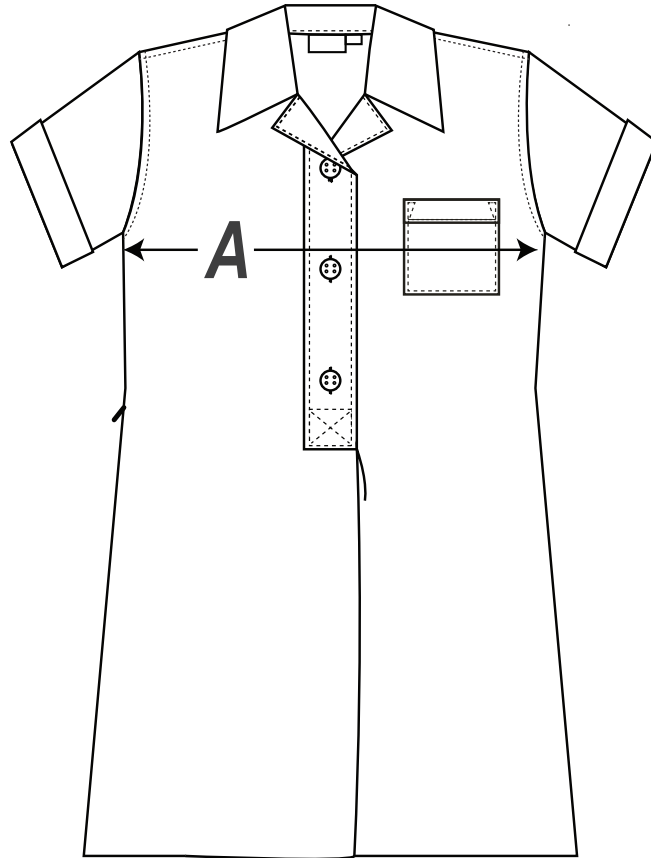
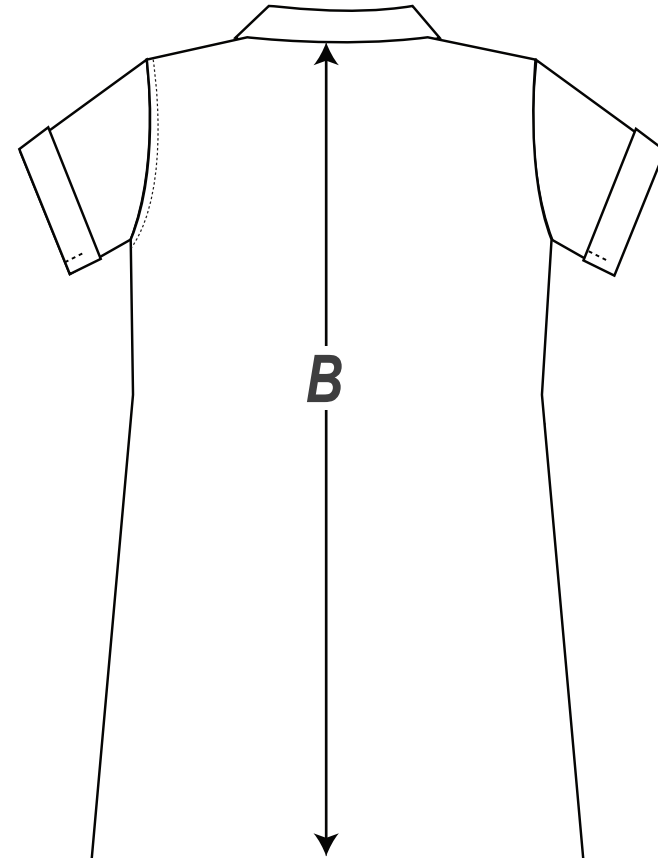


# Gingham Dress

FRONT



BACK



A - Measure from 2cm below armhole across chest

B - Measure from top of back neck to bottom of hem

Gingham Dress												
SIZE	4	6	8	10	12	14	S	M	L	XL	2XL	3XL
A - 1/2 Chest - cm	36	38.5	41	44	46.5	49	52	55	58	60	62	64
B - Centreback Length - cm	62	70	75.5	82	88	94	97.5	100	102	103	105	106

Listed are garment measurements, not body measurements.

When using the size chart, please measure an equivalent garment to determine the correct size.