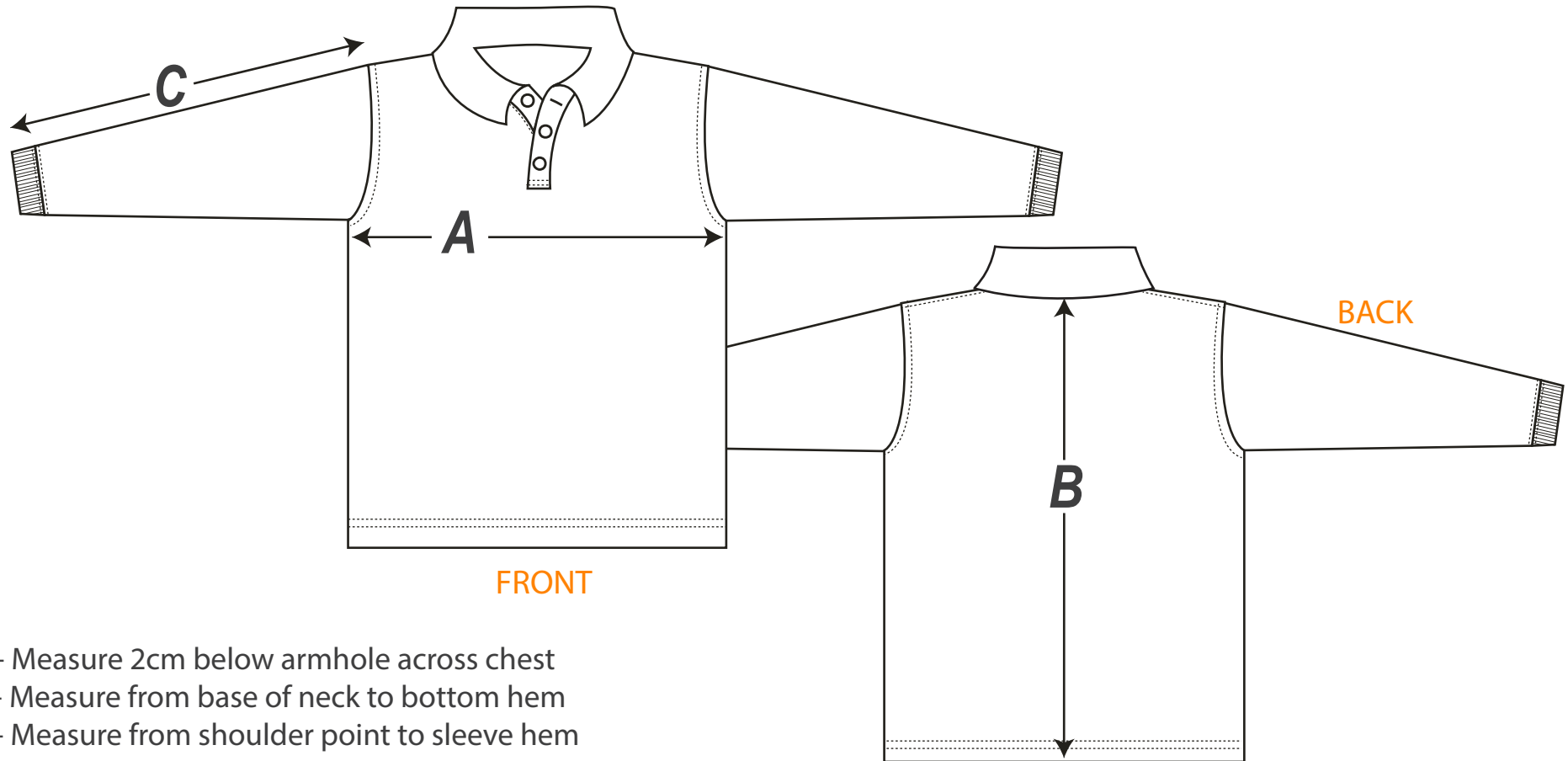


Long Sleeve Polo Shirt



- A - Measure 2cm below armhole across chest
- B - Measure from base of neck to bottom hem
- C - Measure from shoulder point to sleeve hem

Long Sleeve Polo Shirt													
SIZE	2	4	6	8	10	12	14	S	M	L	XL	2XL	3XL
A - Across Front cm	35.5	38	40.5	43	45.5	48	50.5	53	56	59	61.5	64	66
B - Centreback Length cm	43	47	51	55	59	63	67	70	72	74	75	76	77
C - Sleeve Length cm	34	36	42	44	49	54	57	59	61	62	63	64	65

Listed are garment measurements, not body measurements.

When using the size chart, please measure an equivalent garment to determine the correct size.