

TimePorter

user guide



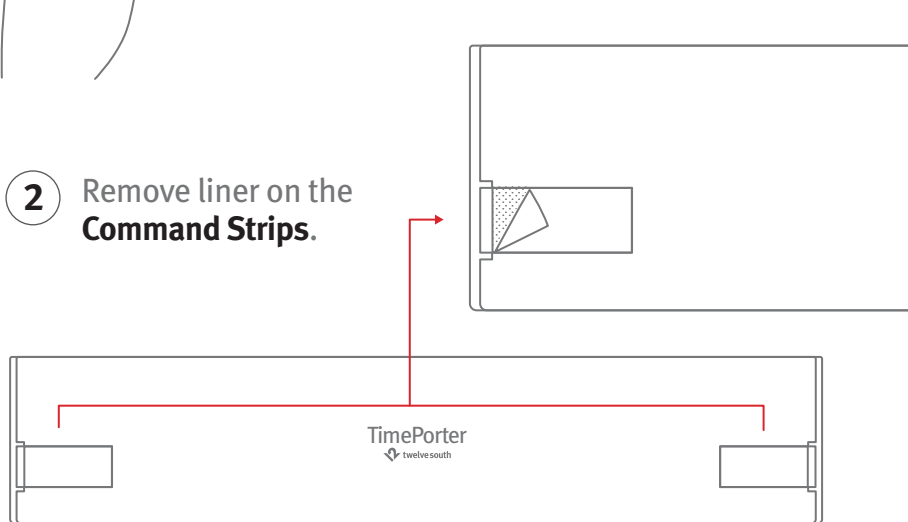
SCAN FOR INSTRUCTIONAL VIDEO

Mounting TimePorter

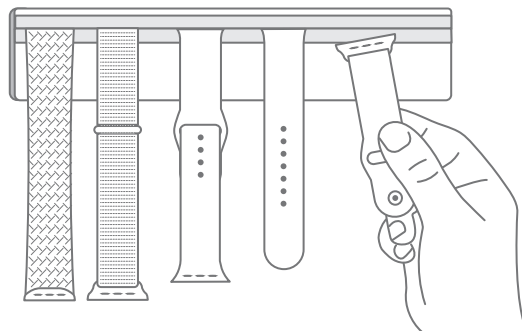
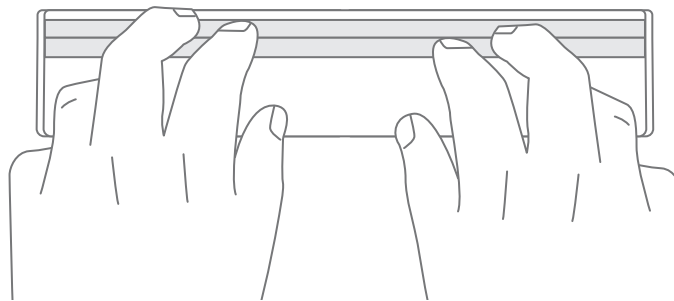


- 1 First, clean surface with **rubbing alcohol**. Do not use household cleaners.

- 2 Remove liner on the **Command Strips**.



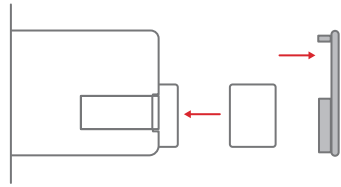
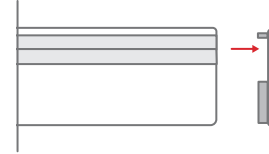
- 3 Carefully position, press and hold for **30 seconds**.



Display up to **6 Apple Watch Bands** by gently pressing them into the soft silicone rail on **TimePorter**.

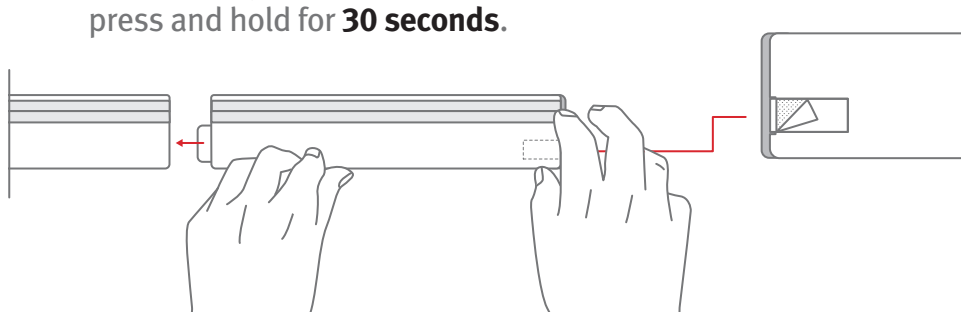
Adding an additional TimePorter

- ① Carefully remove the **Endcap** on the left or right side of the existing **TimePorter**.

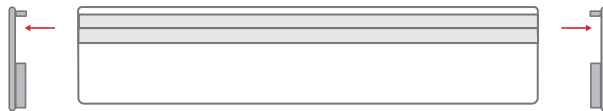


- ② Remove the **Endcap** and install the **Bridge Tab** on the merging side of the new **TimePorter**. Do not remove **Command Strip** liner.

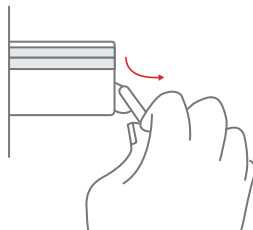
- ③ Remove **Command Strip** liner on capped end and carefully merge the **TimePorters** and then press and hold for **30 seconds**.



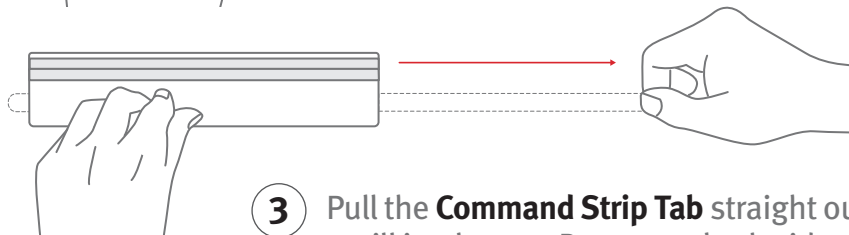
Removing TimePorter



- ① Carefully remove the **Endcaps** on both sides of the **TimePorter**.



- ② You can use the **Endcap** to gently pull and reveal the **Command Strip Tabs**.



- ③ Pull the **Command Strip Tab** straight outward until it releases. Repeat on both sides.

Get help, watch install videos and learn more:

Visit twelvesouth.com/timeporter-quick-start or contact support@twelvesouth.com

© 2023 Twelve South, LLC. All rights reserved. 1503 King St. Charleston, SC 29405 - USA