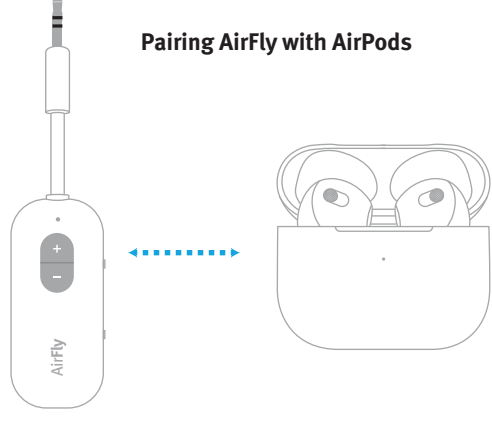


Pairing AirFly with AirPods	1
Pairing AirFly with Wireless Headphones	6
Volume Control & Mute	10
Battery Indicator	11
Turning AirFly On & Off	12
Reconnecting Headphones to iPhone	13
Charging	14
Tips & Tricks	15
Status Light Guide	16

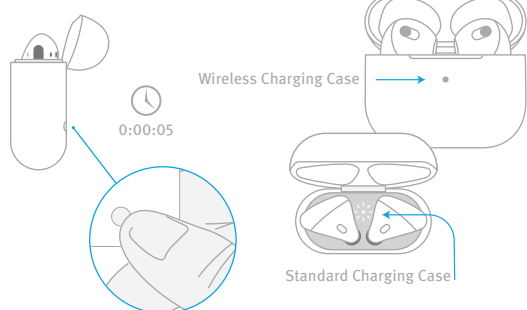
Pairing AirFly with AirPods



AirFly > AirPods

1

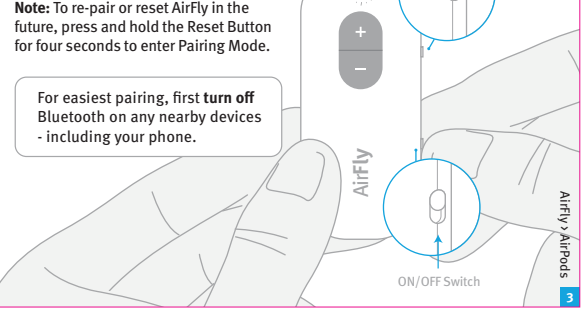
- 1 To enter Pairing Mode on AirPods, first place AirPods inside the Charging Case. With lid open, press and hold the button on the back of the Charging Case until the light flashes white.



AirFly > AirPods

2

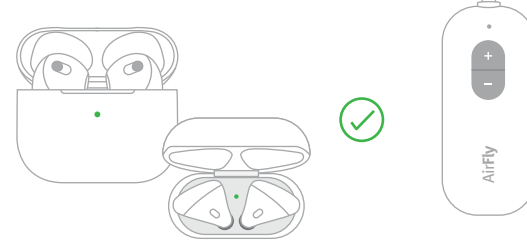
- 2 Turn AirFly on by sliding the ON/OFF switch up. The AirFly will automatically go into Pairing Mode the first time it is turned on, indicated by the flashing white and amber light.



AirFly > AirPods

3

- 3 Once successfully paired, the light on AirPods Charging Case will turn green and the light on AirFly will be solid white and turn off after 10 seconds.

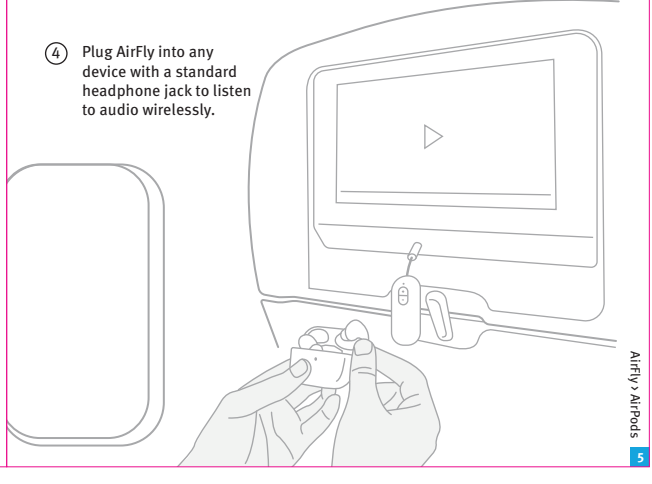


* It can take up to 90 seconds for initial pairing, but AirFly will remember your AirPods when re-connecting in the future.

AirFly > AirPods

4

- 4 Plug AirFly into any device with a standard headphone jack to listen to audio wirelessly.



AirFly > AirPods

5

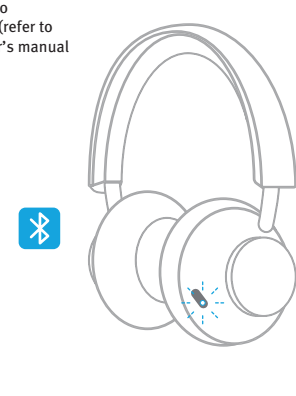
Pairing AirFly with Wireless Headphones



AirFly > Wireless Headphones

6

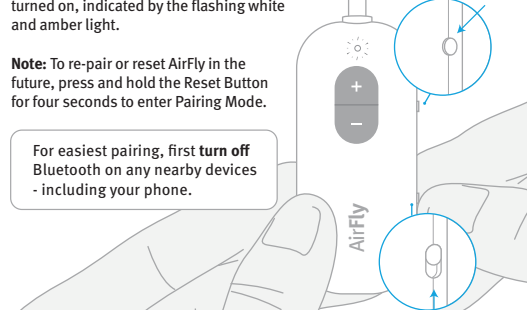
- 1 Put your headphones into Bluetooth Pairing Mode (refer to your headphones' owner's manual for more details).



AirFly > Wireless Headphones

7

- 2 Turn AirFly on by sliding the ON/OFF switch up. The AirFly will automatically go into Pairing Mode the first time it is turned on, indicated by the flashing white and amber light.



AirFly > Wireless Headphones

8

- 3 Once successfully paired, the light on AirFly will be solid white and turn off after 10 seconds.



* It can take up to 90 seconds for initial pairing, but AirFly will remember your headphones when re-connecting in the future.

AirFly > Wireless Headphones

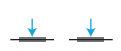
9

AirFly Volume Controls & Mute

To adjust the volume of AirFly, press Volume Buttons (up "+" or down "-"). You can also press and hold Volume Button (up "+" or down "-") to gradually increase (or decrease) volume until its upper or lower limit is reached.

To MUTE AirFly audio temporarily, double-click Volume Down Button. Light will blink amber continuously to let you know Volume is MUTED.

Double-click Volume Down again to unmute audio - and return to previous volume setting.



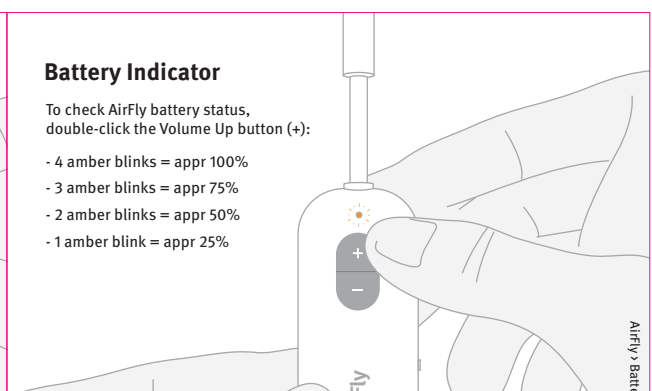
AirFly > Volume Control

10

Battery Indicator

To check AirFly battery status, double-click the Volume Up Button (+):

- 4 amber blinks = appr 100%
- 3 amber blinks = appr 75%
- 2 amber blinks = appr 50%
- 1 amber blink = appr 25%



AirFly > Battery Indicator

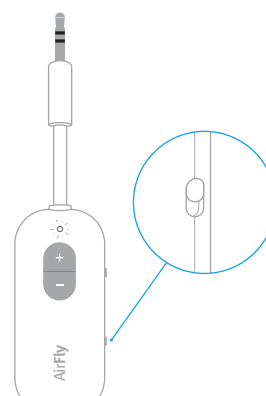
11

Turning AirFly On & Off

Use the switch on the side of AirFly to turn it on or off.

Slide up to turn on.
Slide down to turn off.

AirFly will reconnect to your headphones when turned back on.



Turning AirFly On & Off

12

Reconnecting Your AirPods or Headphones Back to Your Smartphone/Tablet

Once paired, AirFly will remember your AirPods / Headphones and switch to them when the unit is turned on. To switch back to using your AirPods / Headphones with your Smartphone or Tablet, first turn AirFly off.

On your device, open Bluetooth Settings, and select your headphones from the list. Status will change from Not Connected to Connected once headphones are successfully paired with your device.



Pairing Back to iPhone

13

Charging AirFly

To charge, simply plug the included USB-C to USB-A Charging Cable into AirFly, and then into any powered USB port. AirFly is fully charged within 2 hours.

The internal battery of AirFly lasts about 20 hours. We recommend fully charging AirFly before using it for the first time. If your AirFly is low on power, it will flash amber 3 times to alert you that it will need to be charged soon.

While charging, the AirFly will illuminate in amber and stay on. Once fully charged, the amber light will turn off. If desired, AirFly can remain plugged in and charging while in use.

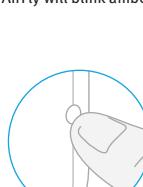


Charging

14

Tips & Tricks

- 1 If only one AirFly seems to be playing audio, turn AirFly off and back on. This will re-sync AirFly and should reconnect both AirPods.
- 2 If you want to pair a new set of headphones to AirFly, or are having trouble connecting to your headphones, reset AirFly by pressing and holding the Reset button on the side of AirFly for 4 seconds. Once reset, AirFly will blink amber 4 times, and then will go into Pairing Mode.



Tips & Tricks

15

Status Light Guide

	Power On	White LED flashes twice
	Pairing Mode	White & Amber LED flash alternately
	Unconnected Standby Mode	White LED flashes twice every 5 seconds
	Connected Standby Mode	Solid White LED
	Low Power	Amber LED flashes 3 times every 10 seconds
	Charging	Solid Amber
	Fully Charged	Amber LED turns off

Status Light Guide

16

FCC Statement

This device complies with Part 15 of the FCC Rules. Operation is subject to the following two conditions: (1) this device may not cause harmful interference, and (2) this device must accept any interference received, including interference that may cause undesired operation.

Warning: Changes or modifications not expressly approved by the party responsible for compliance could void the user's authority to operate the equipment.

Note: This equipment has been tested and found to comply with the limits for a Class B digital device, pursuant to part 15 of the FCC Rules. These limits are designed to provide reasonable protection against harmful interference in a residential installation. This equipment generates, uses and can radiate radio frequency energy and, if not installed and used in accordance with the instructions, may cause harmful interference to radio communications. However, there is no guarantee that interference will not occur in a particular installation. If this equipment does cause harmful interference to your radio or television reception, which can be determined by turning the equipment off and on, the user is encouraged to try to correct the interference by one or more of the following measures:

- Reorient or relocate the receiving antenna.
- Increase the separation between the equipment and receiver.
- Connect the equipment into an outlet on a circuit different from that to which the receiver is connected.
- Consult the dealer or an experienced radio/TV technician for help.

ISED Statement

This device complies with the license-exempt transmitter that comply with Innovation Science and Economic Development Canada's license-exempt (ISED). Operation is subject to the following two conditions: (1) this device may not cause interference, and (2) this device must accept any interference, including interference that may cause undesired operation of the device.

L'émetteur exempt de licence contenu dans le présent appareil est conforme aux CNR d'Innovation, Sciences et Développement économique Canada applicables aux appareils radio exempts de licence. L'exploitation est autorisée aux deux conditions suivantes: (1) l'appareil ne doit pas produire de brouillage; (2) l'appareil doit accepter tout brouillage radioélectrique subi, même si le brouillage est susceptible d'en compromettre le fonctionnement.

Safety Statement
- Disposal of a battery into fire or a hot oven, or mechanically crushing or cutting of a battery, that can result in an explosion.
- Leaving a battery in an extremely high temperature surrounding environment that can result in an explosion or the leakage of flammable liquid or gas.
- A battery subjected to extremely low air pressure that may result in an explosion or the leakage.

NBFC Statement
This telecommunication equipment conforms to the requirements of the National Telecommunications Commission.

RED
Herby, Twelve South, LLC, declares that the radio equipment type, Model number TS-2259, is in compliance with Directive 2014/53/EU. The full text of EU declaration of conformity is available at our website: <http://www.twelvesouth.com>

Frequency range: 2402 – 2480MHz
Transmission power: 4dBm(conductd)

Have questions?

Visit twelvesouth.com or contact support@twelvesouth.com

© 2024 Twelve South, LLC. All rights reserved.
1503 King St. Charleston, SC 29405 - USA

