

thank you

BackPack

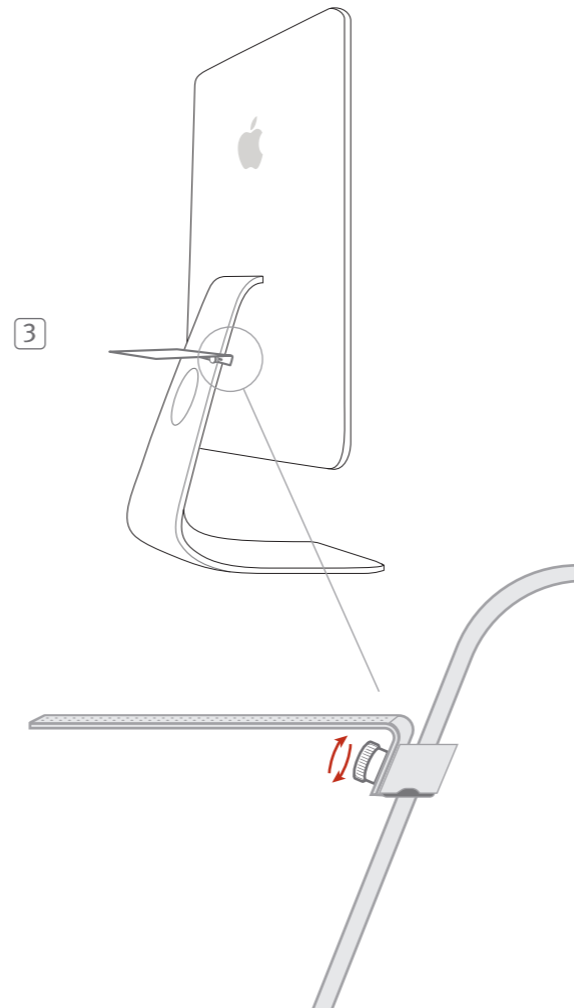
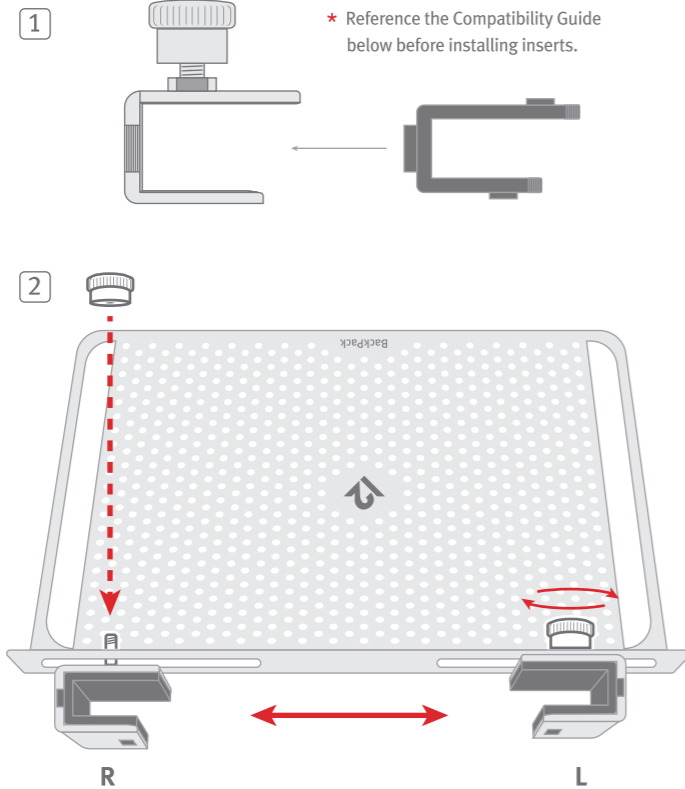
adjustable shelf for iMac
owner's guide



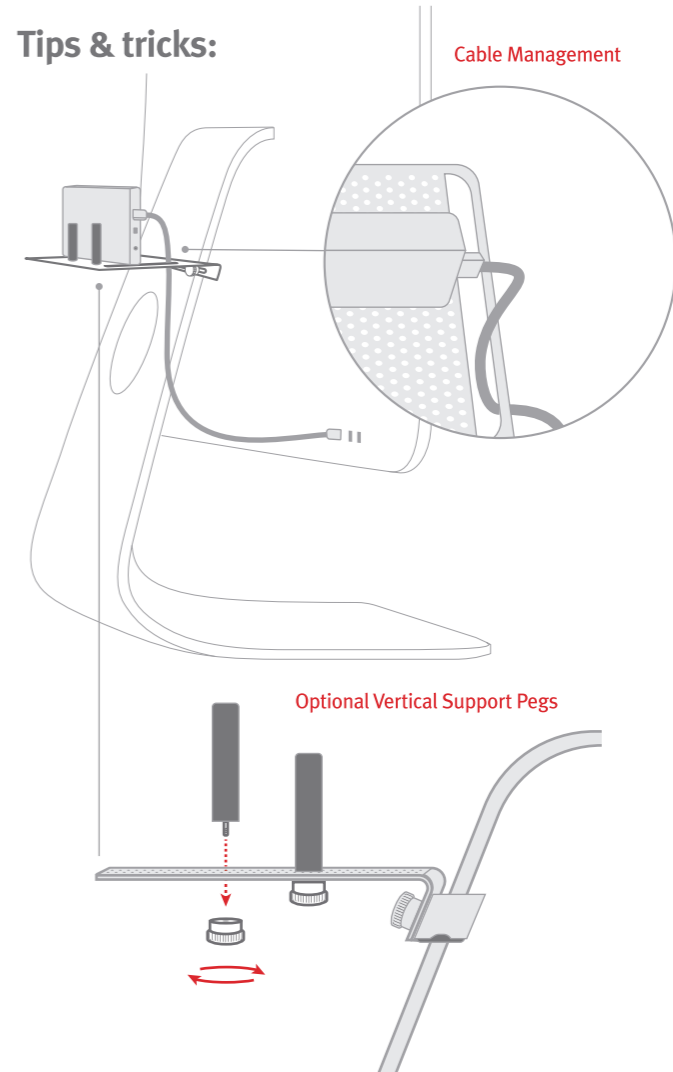
What's in the box:

- BackPack Shelf
- Metal Clips + Fastening Screws (L & R)
- Lock Washers (2)
- Plastic Fit Inserts (4 sizes - L & R)
- Non-slip Shelf Pad
- Vertical Support Pegs + Fastening Screws (4)

Installing BackPack:



Tips & tricks:



21.5-inch iMac (late 2012 -)
Use #6 inserts for high install
Use #1 inserts for low install

21.5-inch iMac (late 2009-late 2011)
Use #3 inserts

27-inch iMac (late 2012 -)
Use #1 inserts for high install
Use #4 inserts for low install

27-inch iMac (late 2009-mid 2011)
Use #4 inserts

27-inch Thunderbolt Display/
LED Cinema Display
Use #4 inserts

Additional Fit Inserts that offer compatibility for legacy iMacs may be available. Please contact support@twelvesouth.com for more info.

Bonus Tip: The Non-slip Shelf Pad works nicely as a guide for lining up the Vertical Support Pegs and more importantly, it prevents metal on metal contact when resting hard drives or a MacBook on BackPack.

Important: The max weight to place on BackPack is 3.5 lbs (1.6 kg). Please check the device manufacturer's website specs if you're not sure of the weight of your peripheral or device.

© 2017 Twelve South, LLC. All rights reserved.