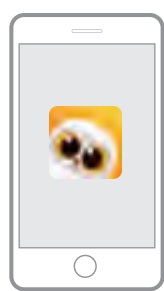


USER MANUAL



Scan to watch tutorial videos



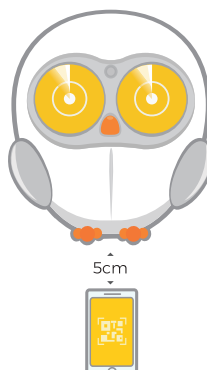
Download "Luka Reading" APP



Press and hold the tail for 4 sec to turn Luka on/off



Press the right wing to read a picture book



Open the Luka App to pair with Luka

- Click on APP Home page, follow prompts to generate QR code within the APP.
- Place the QR code in front of Luka
- If Luka does not immediately recognize the QR code on your phone, try moving the phone a little (left, right, forward, or backward)

FEATURES



To Read Books



- Place the picture book in front of Luka.
- Press the right wing.
- Luka automatically scans and recognizes the book cover, then starts reading.
- Press the beak to stop reading.



To Play Audio Contents



- Press the left wing to play audio contents.
- Single click to change the content category: Favorite playlist, Lullaby, Songs, Stories and Sinology.
- Double click to play next, press the beak to stop playing.



To Push Audio Contents from App



- Choose the stories & songs from Luka App in "Stories" section and push to Luka to play.



Parrot Mode



- In the Parrot Mode section of the Luka App, choose a default message or type in any words; push to Luka and let Luka speak it for you.

SETTINGS



Volume



- Turn the tail clockwise to increase the volume.
- Turn the tail counterclockwise to decrease the volume.



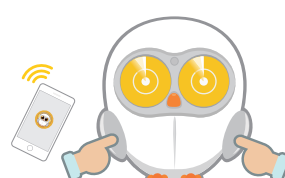
Night Mode



- Turn on Night Mode in the Luka App "Luka Management" section, to block disturbances and lower the brightness for bedtime storytelling.



Wifi Setting



- Press and hold the left and right wings together for 2 sec. to check the internet status.
- You can reconnect to the internet in this mode.



Restart



- If Luka is tired and not operating correctly, he may require a restart. To restart Luka, press and hold his tail for 20 sec.



Update



- For more features and a better user experience, please check "Device Management" in the Luka App to update Luka frequently.

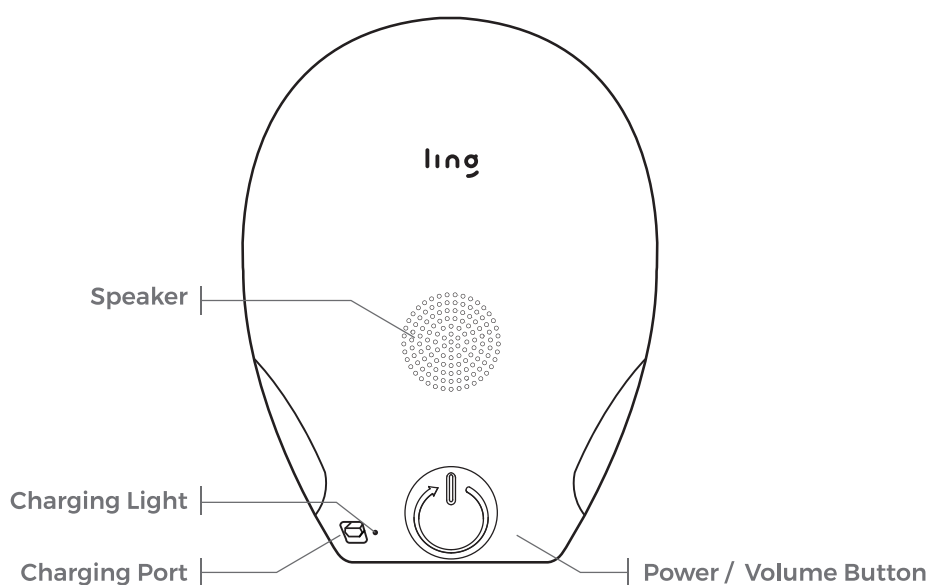
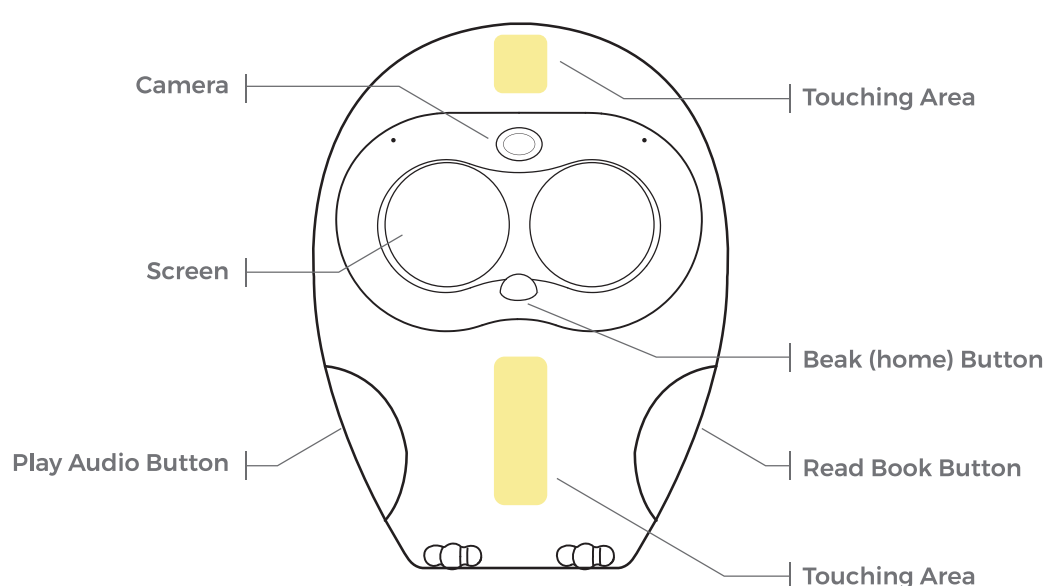


Battery Status



- Press and hold Luka's beak to check battery status.

PRODUCT MANUAL



Warning

Changes or modifications to this unit not expressly approved by the party responsible for compliance could void the user's authority to operate the equipment.

Note

This equipment has been tested and found to comply with the limits for a Class B digital device, pursuant to Part 15 of the FCC Rules. These limits are designed to provide reasonable protection against harmful interference in a residential installation. This equipment generates, uses and can radiate radio frequency energy and, if not installed and used in accordance with the instructions, may cause harmful interference to radio communications. However, there is no guarantee that interference will not occur in a particular installation. If this equipment does cause harmful interference to radio or television reception, which can be determined by turning the equipment off and on, the user is encouraged to try to correct the interference by one or more of the following measures:

- Reorient or relocate the receiving antenna.
- Increase the separation between the equipment and receiver.
- Connect the equipment into an outlet on a circuit different from that to which the receiver is connected.
- Consult the dealer or an experienced radio/TV technician for help.

The device has been evaluated to meet general RF exposure requirement. The device can be used in portable exposure condition without restriction.

All transactions during subsequent use are inevitably associated with your user account and the registered serial numbers and are not transferable to third parties or other unregistered users; data information on app is strictly protected.

FCC ID:2AM8U-LK1601

This device complies with Part 15 of the FCC Rules. Operation is subject to the following two conditions:

- (1) This device may not cause harmful interference, and
- (2) This device must accept any interference received, including interference that may cause undesired operation.