

Beta  
SANVA  
FRANCA

# A215E



agama

## 1/8 SCALE 4WD ELECTRIC BUGGY

U.J. ENTERPRISE CO., LTD.  
E-mail:contact@agama-rc.com

2016.01.30. 1K

agama

www.agama-rc.com



# PURE ELECTRIC

*Instruction Manual*

## 1/8 SCALE 4WD ELECTRIC BUGGY

Agama vehicles fit a wide range of skilled drivers. Pros and Beginners alike can experience Agama products with great results!  
Agama products are designed with quality and precision in mind.

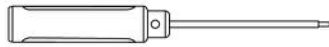
Made in Taiwan

|  |              |
|--|--------------|
| <b>INTRODUCTION</b>                          | <b>01</b>    |
| <b>CAUTION</b>                               | <b>02</b>    |
| <b>BAG A</b> Front Diff Installation         | <b>03</b>    |
| Rear Diff Installation                       | <b>04</b>    |
| Center Diff Installation                     | <b>05</b>    |
| <b>BAG B</b> Shock Install (Front & Rear)    | <b>06-07</b> |
| <b>BAG C</b> Front Spindle & CV Installation | <b>08</b>    |
| <b>BAG D</b> Front End Installation          | <b>09-12</b> |
| <b>BAG E</b> Rear Hub & CV Installation      | <b>13</b>    |
| <b>BAG F</b> Rear End Installation           | <b>14-17</b> |
| <b>BAG H</b> Receiver & Steer Servo Assembly | <b>18</b>    |
| <b>BAG J</b> Servo Saver Assembly            | <b>19-21</b> |
| <b>BAG K</b> Chassis Guard Installation      | <b>21</b>    |
| <b>BAG Q</b> Battery System                  | <b>22</b>    |
| <b>CHASSIS INSTALLATION</b>                  | <b>23-28</b> |
| <b>FACTORY SETUP SHEET</b>                   | <b>29-30</b> |

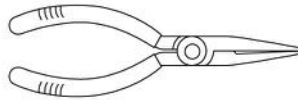
**Notice:** The following items are needed for completion of the PRO KIT, They are not included with this kit (unless noted), and should be obtained from your local hobby shop.

**Be sure to read the instructions completely prior to assembly.**

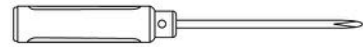
## TOOLS NEEDED TO ASSEMBLE



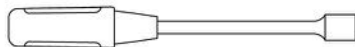
Hex Wrenches



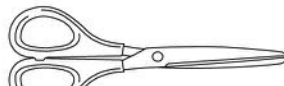
Needle Nose Pliers



Phillips Type Screw Driver



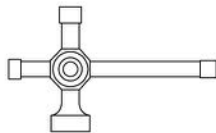
Box Wrench(5.5mm / 7mm / 10mm)



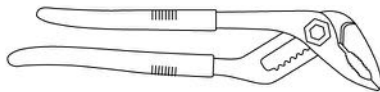
Scissors



Hobby Knife



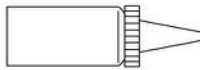
Utility Wrench



Pliers



Glass or Vinyl Tape



Instant Glue

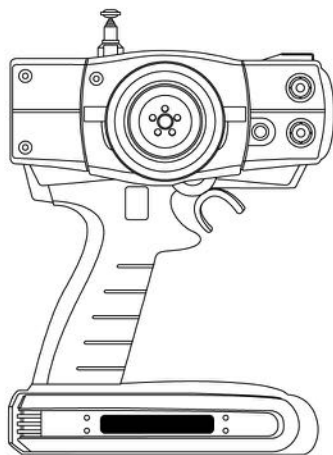


Rubber Glue

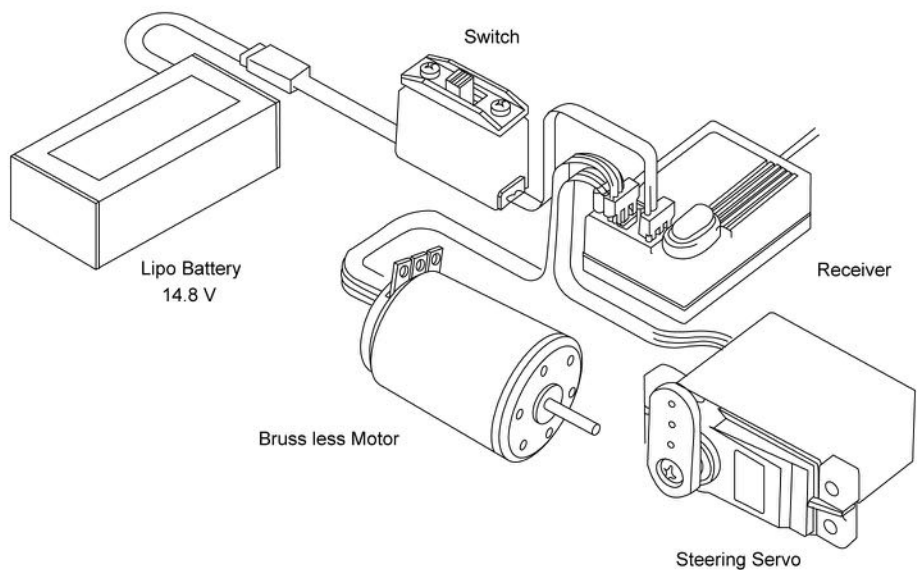


Screw (Sement)

## ITEMS NEEDED TO CONTROL CAR

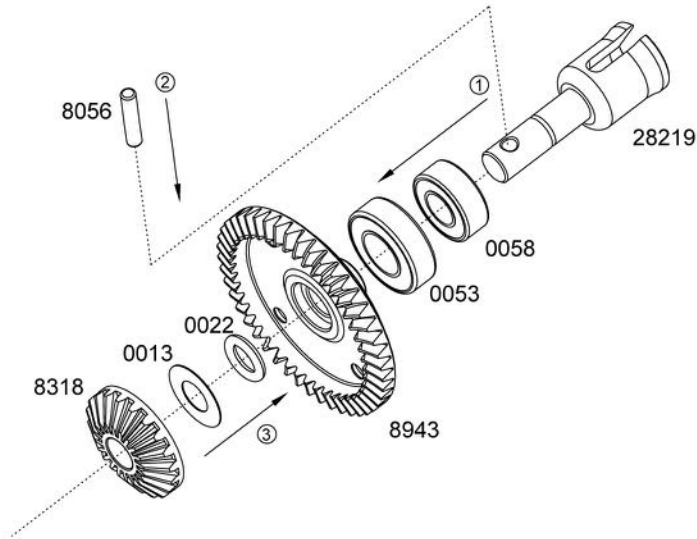


Transmitter



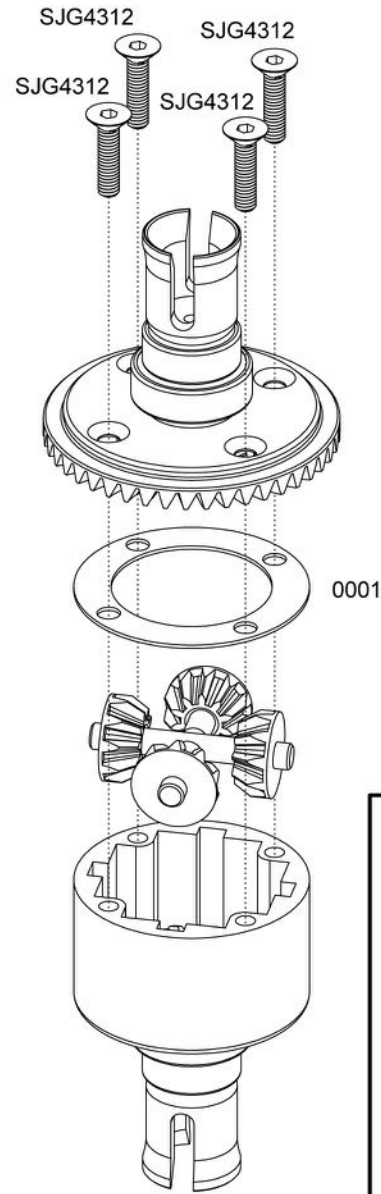
## STEP A - 1

### Front Diff Ring Gear Assembly



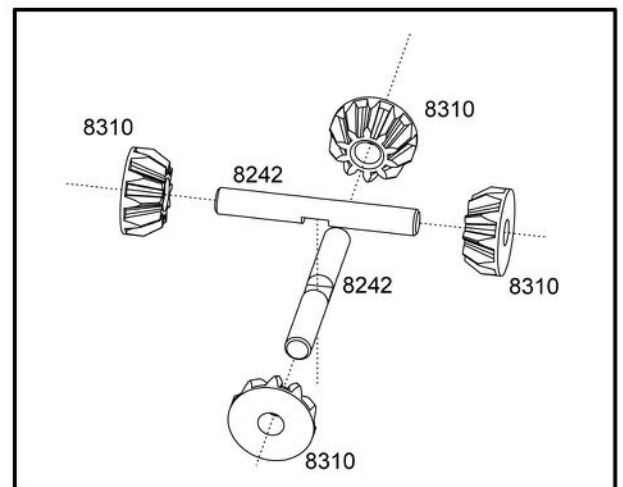
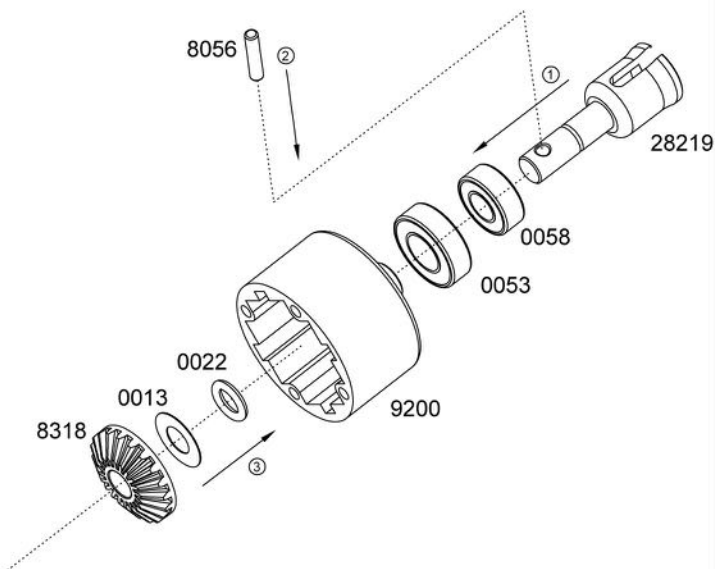
## STEP A - 3

### Complete Front Diff Assembly



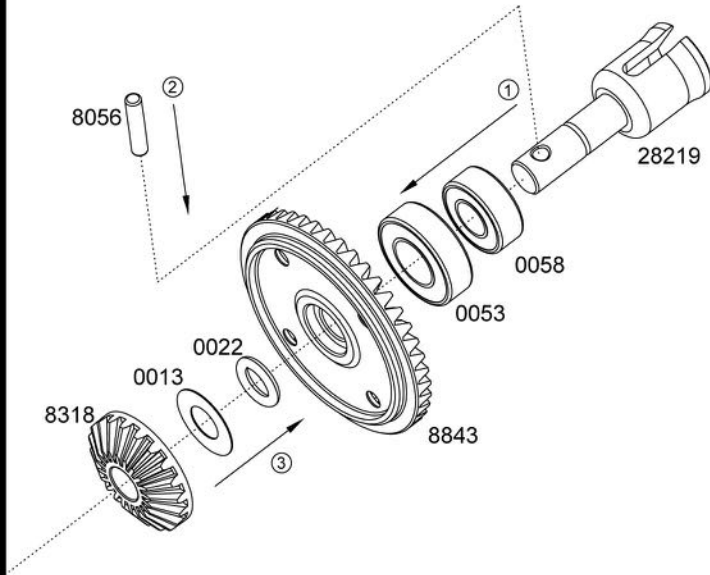
## STEP A - 2

### Front Diff Case Assembly



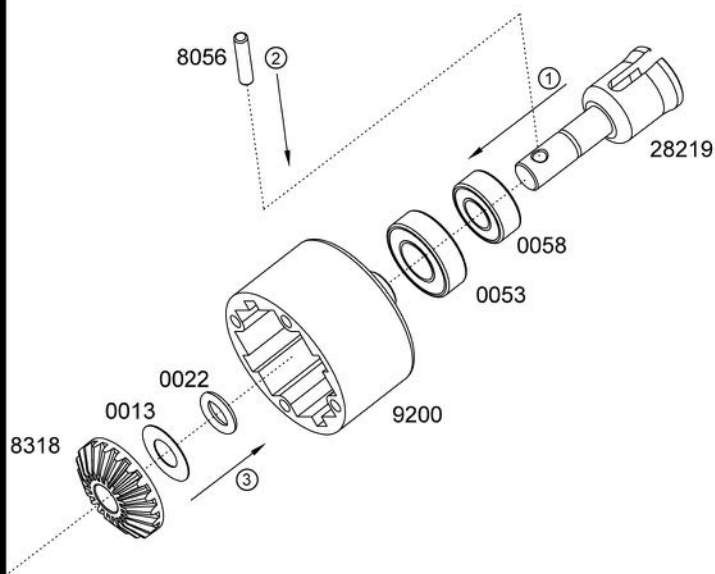
## STEP A - 4

### Rear Diff Ring Gear Assembly



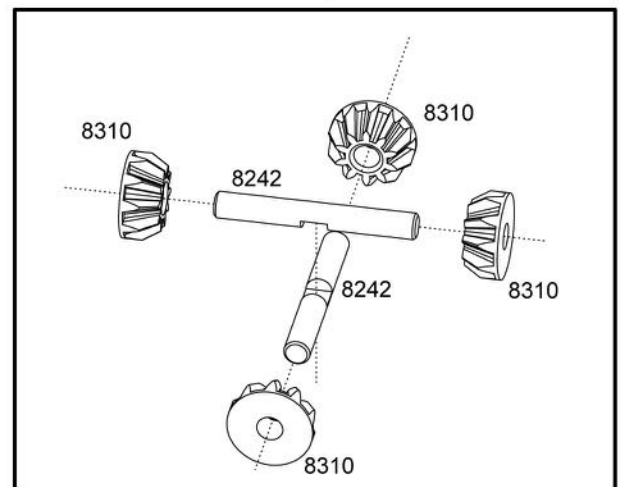
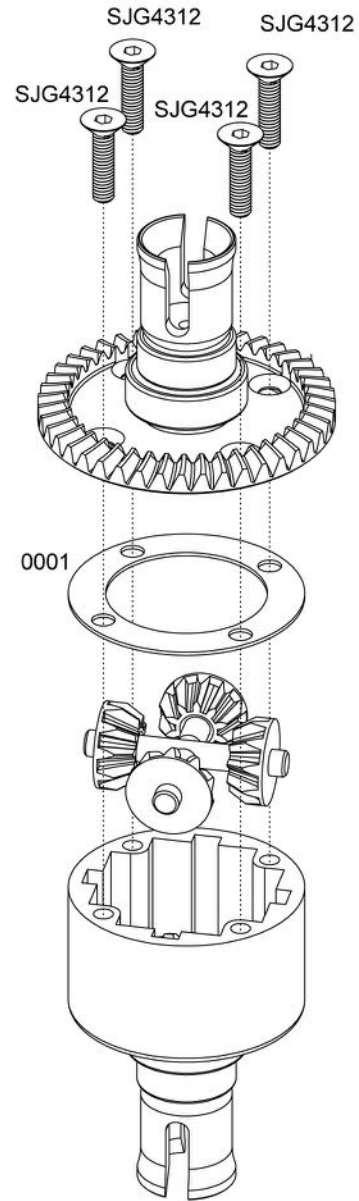
## STEP A - 5

### Rear Diff Case Assembly



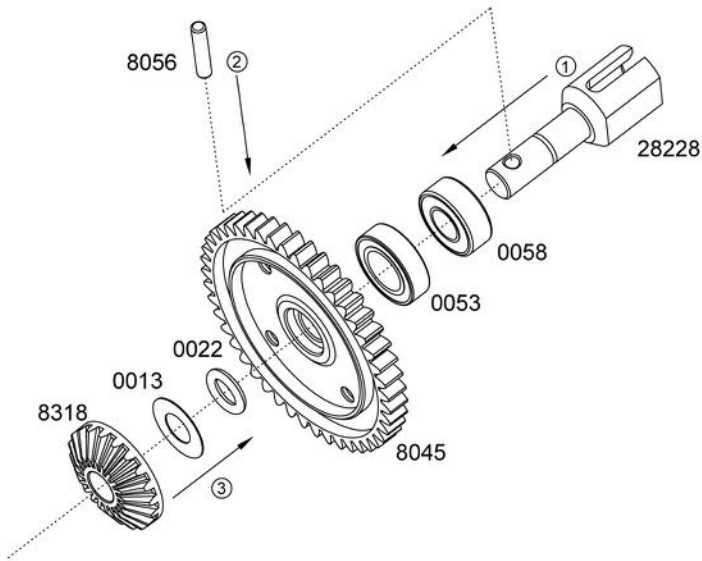
## STEP A - 6

### Complete Rear Diff Assembly



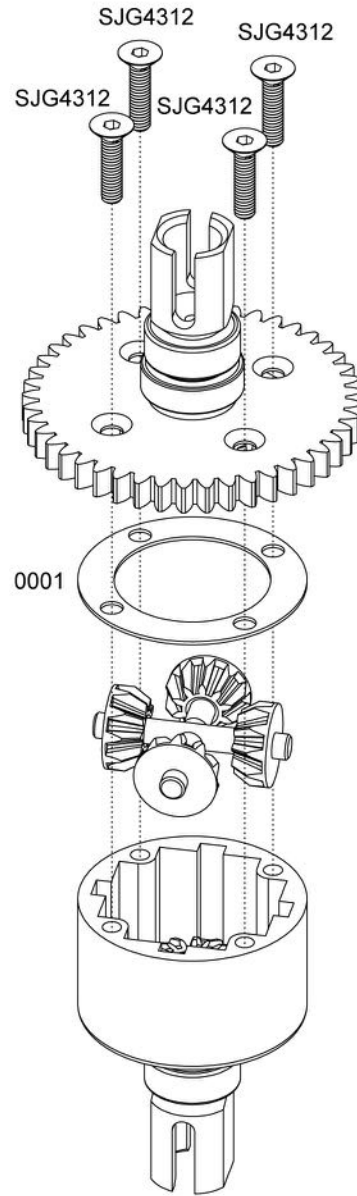
## STEP A - 7

### Center Diff Ring Gear Assembly



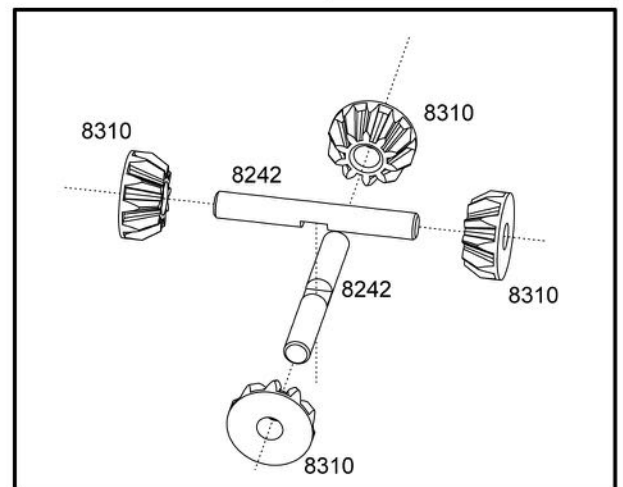
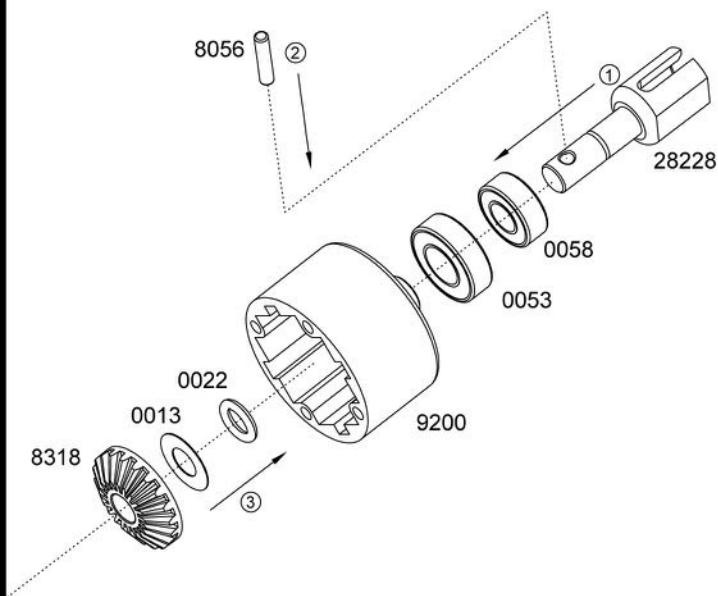
## STEP A - 9

### Complete Center Diff Assembly



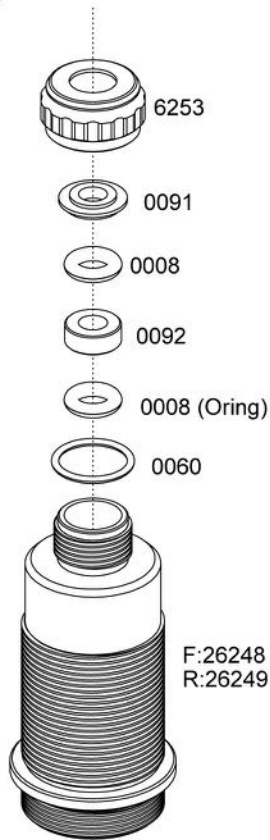
## STEP A - 8

### Center Diff Case Assembly



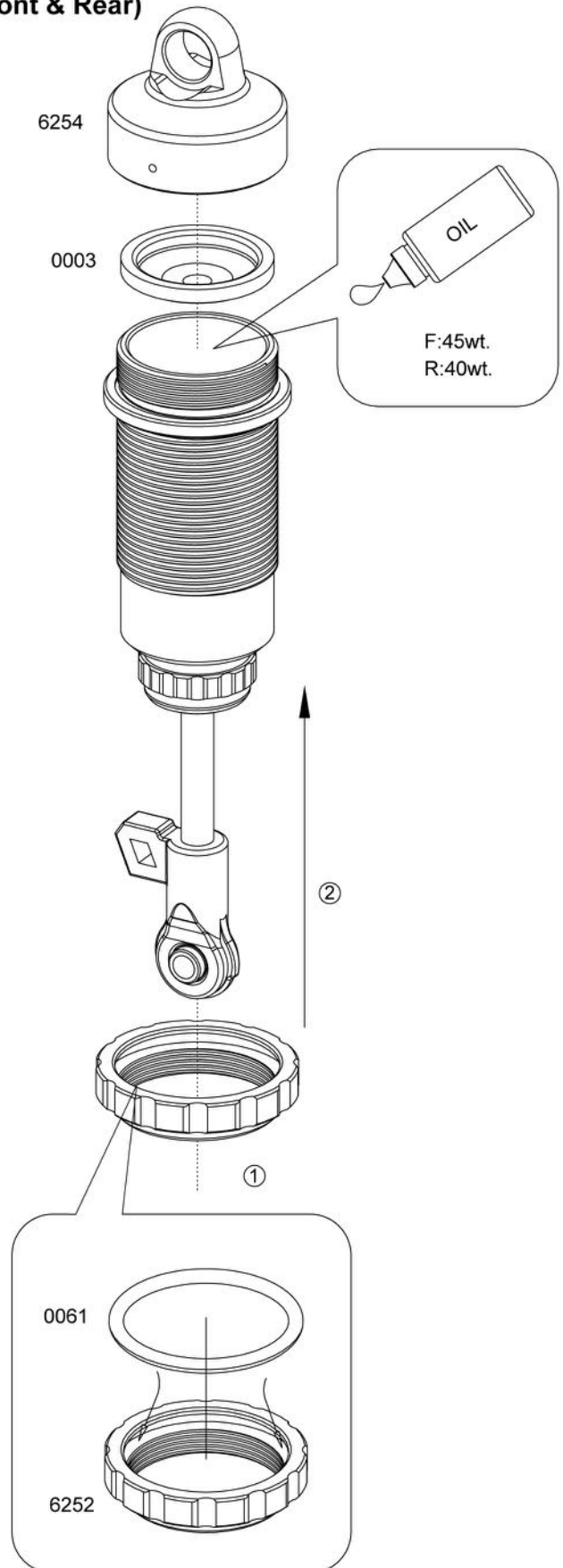
## STEP B - 1

### Shock Assembly (Front & Rear)



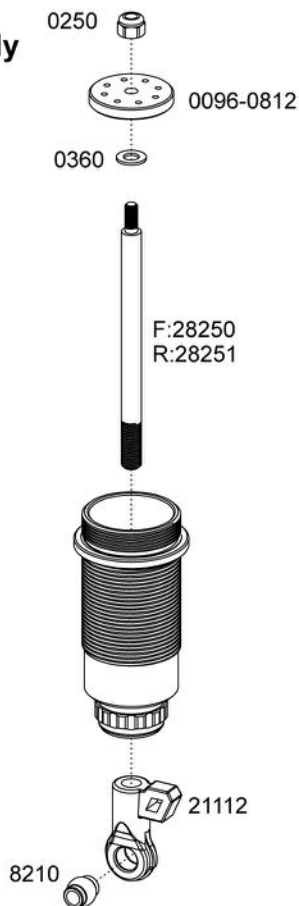
## STEP B - 3

### Shock Assembly (Front & Rear)



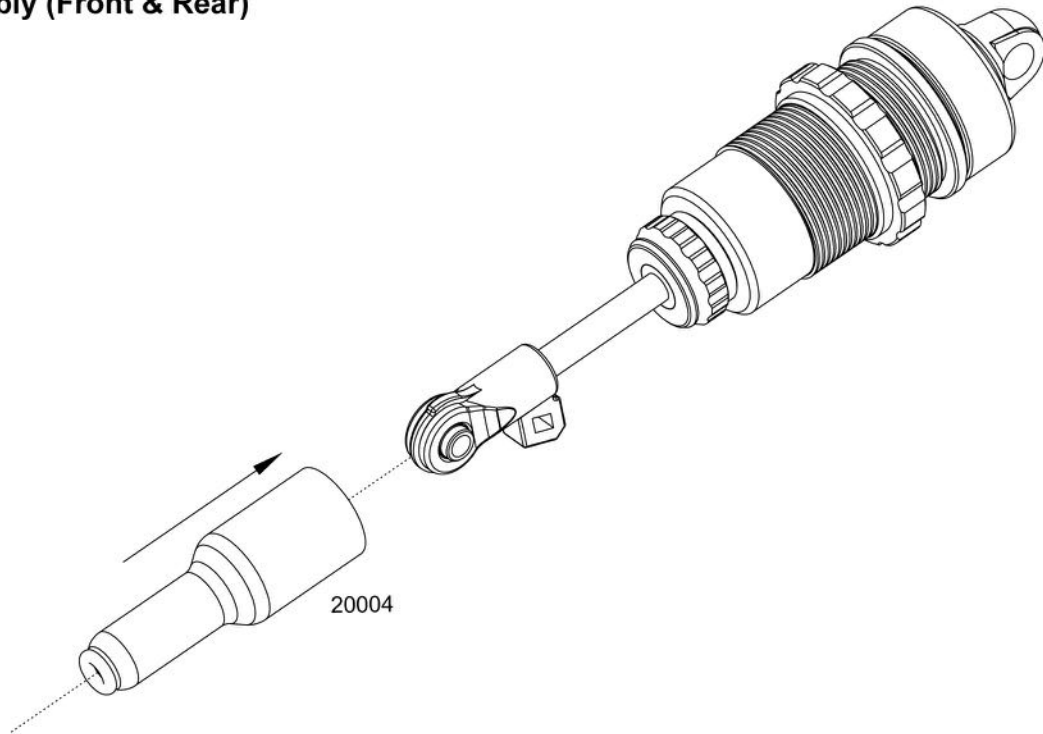
## STEP B - 2

### Shock Assembly (Front & Rear)



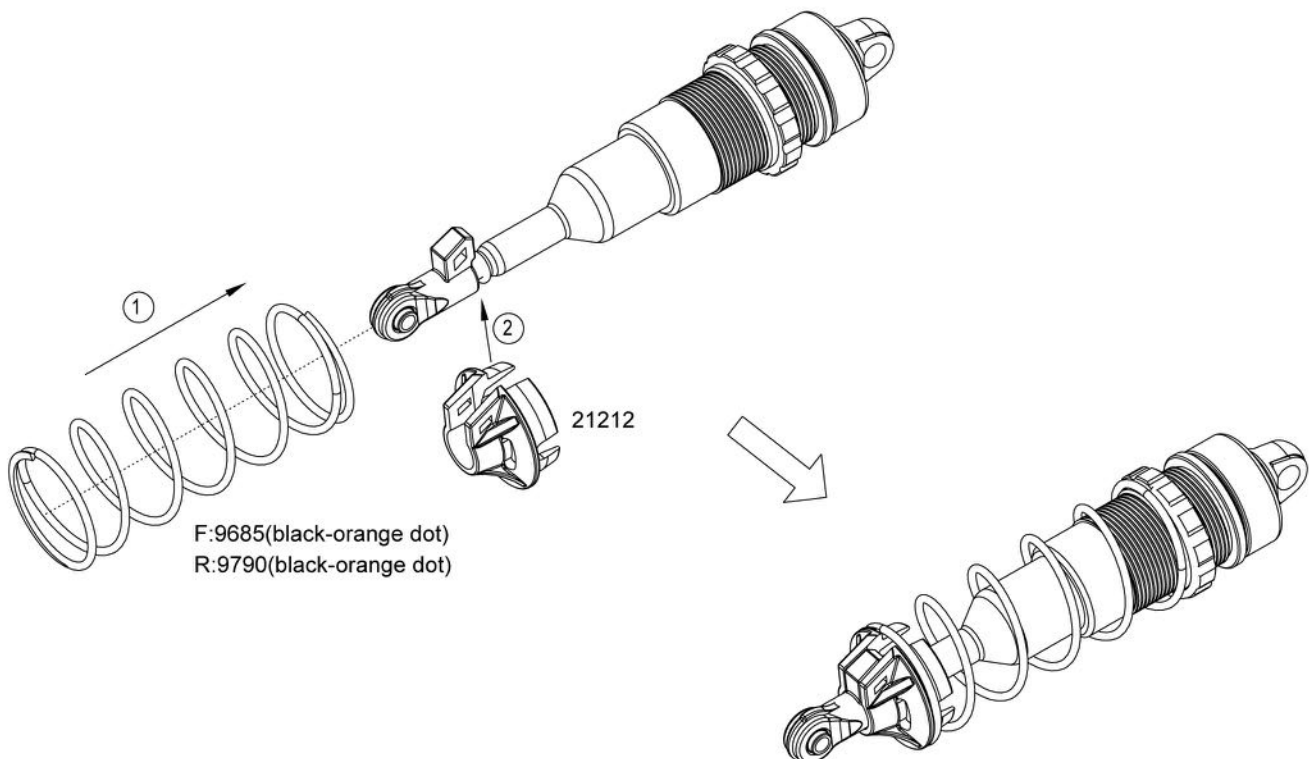
## STEP B - 4

### Shock Assembly (Front & Rear)



## STEP B - 5

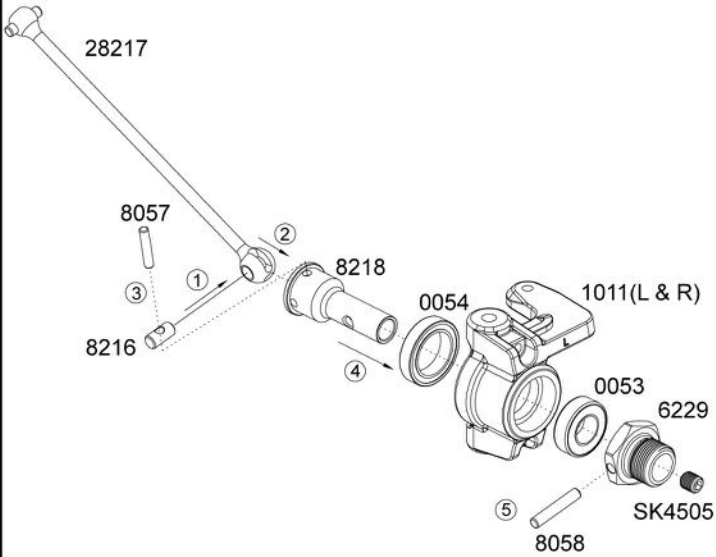
### Shock Assembly (Front & Rear)





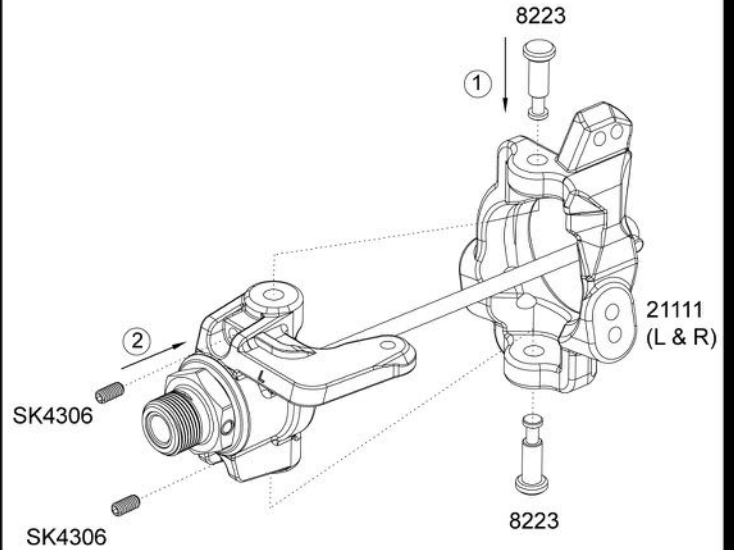
## STEP C - 1

### Front Spindle & CV Assembly (Left/Right)



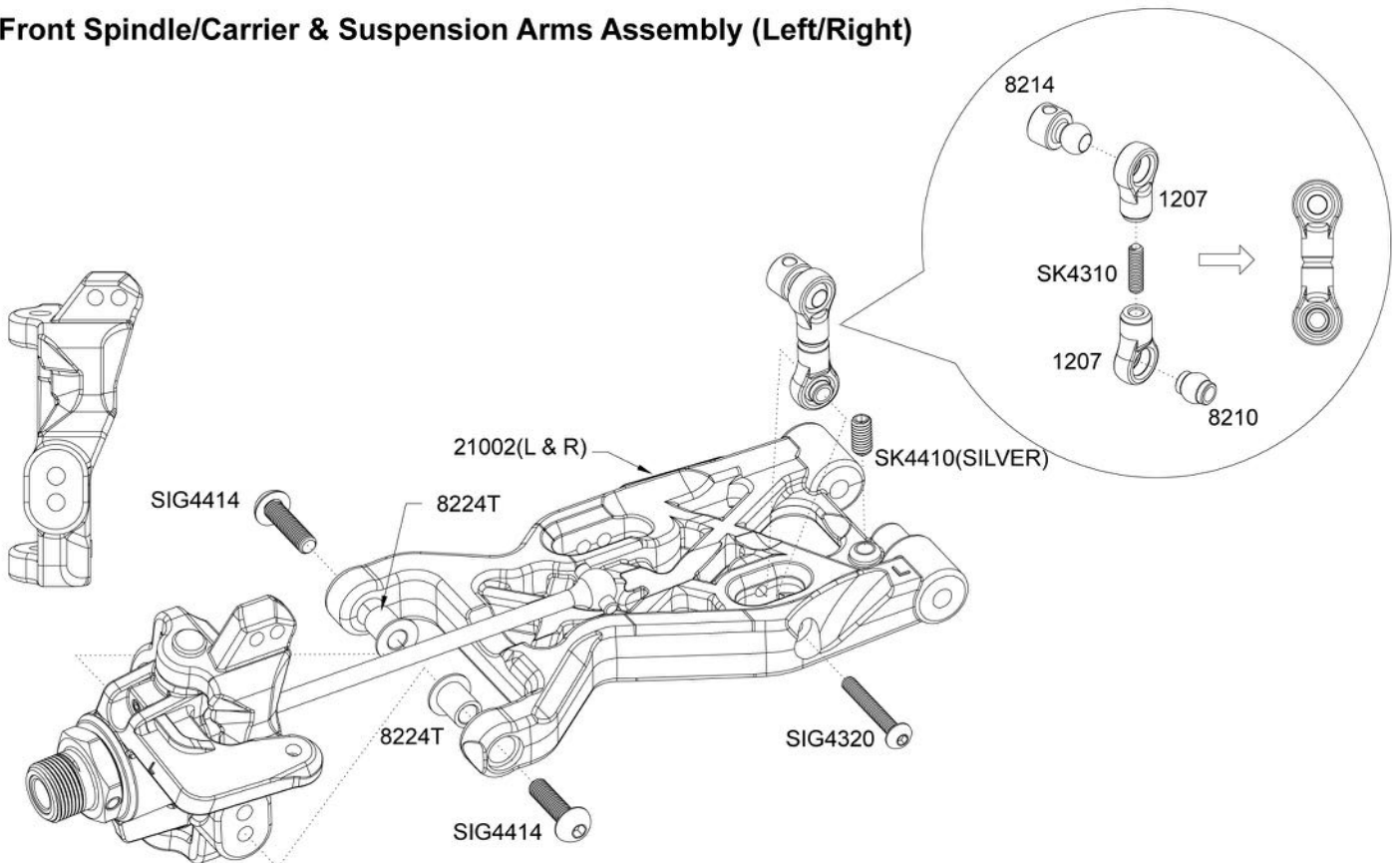
## STEP C - 2

### Front Spindle & Carrier Assembly (Left/Right)



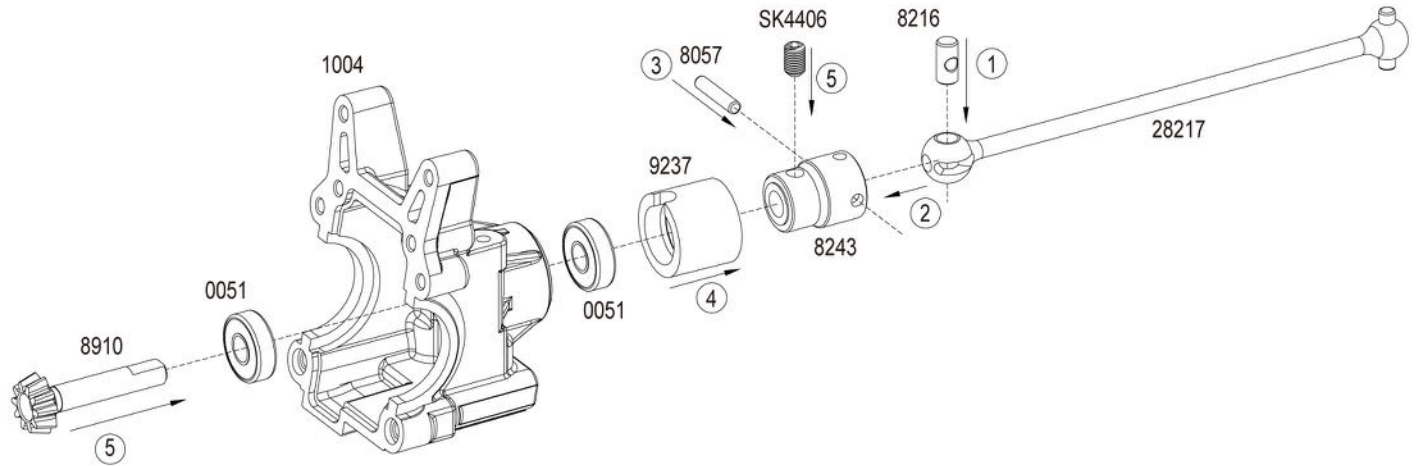
## STEP C - 3

### Front Spindle/Carrier & Suspension Arms Assembly (Left/Right)



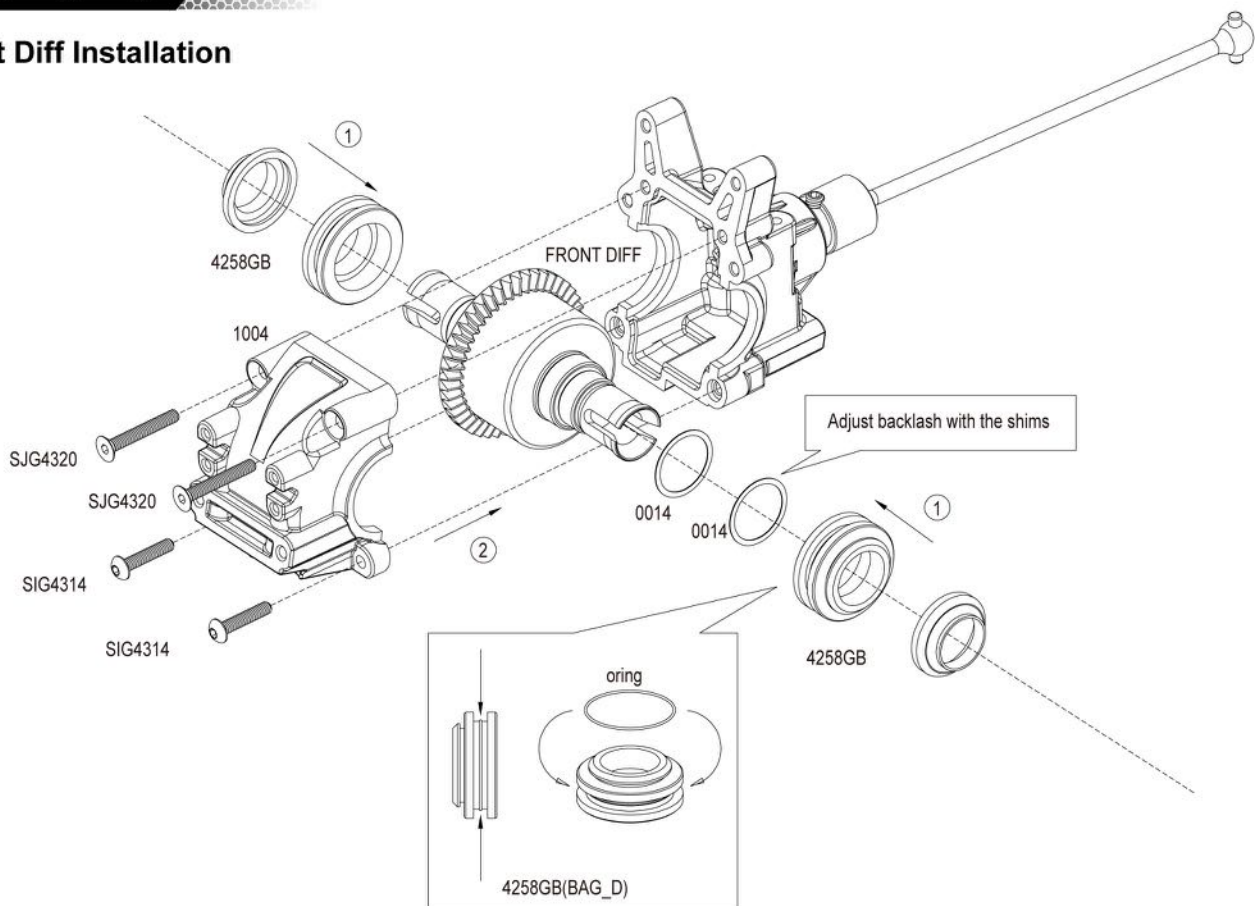
## STEP D - 1

### Front Diff Case & CV Assembly



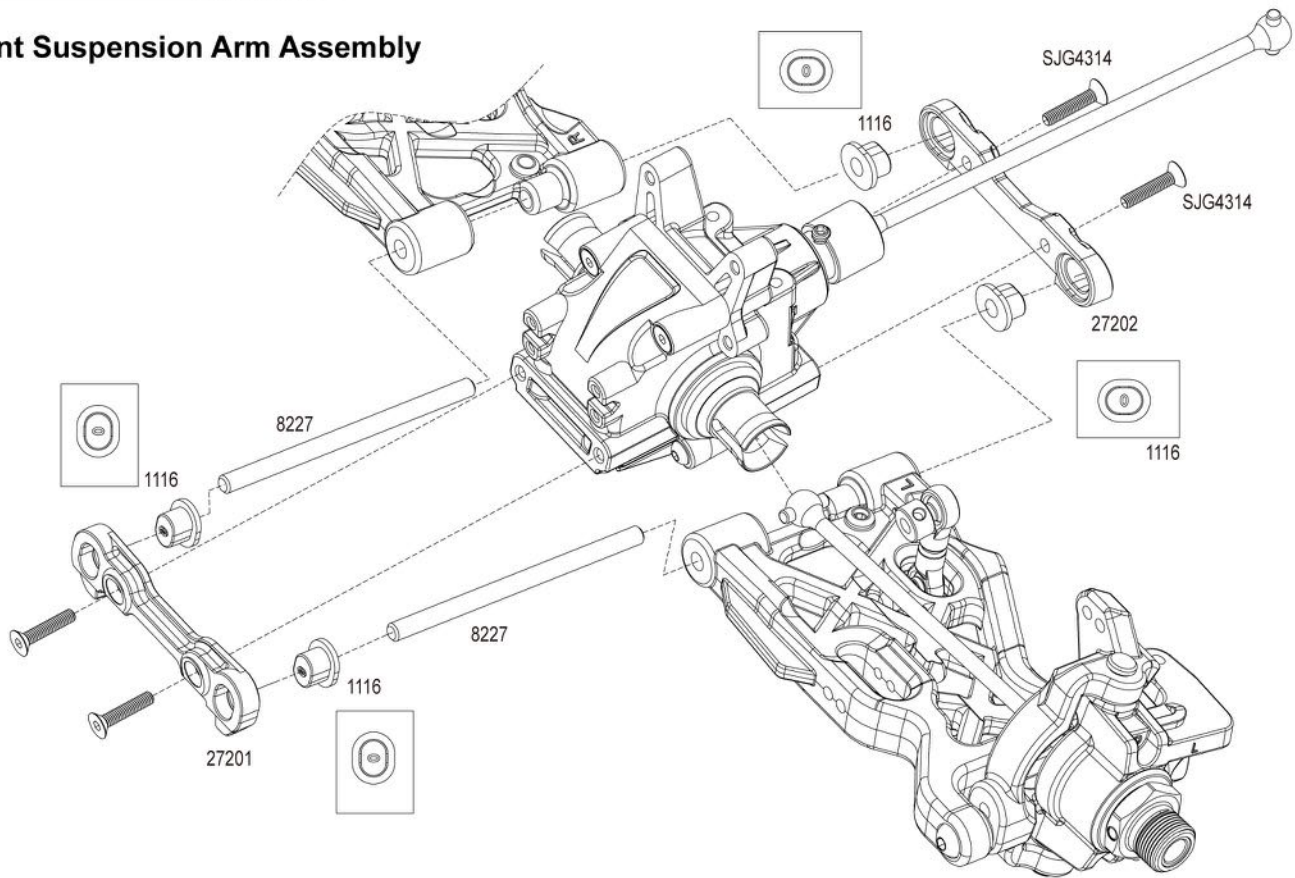
## STEP D - 2

### Front Diff Installation



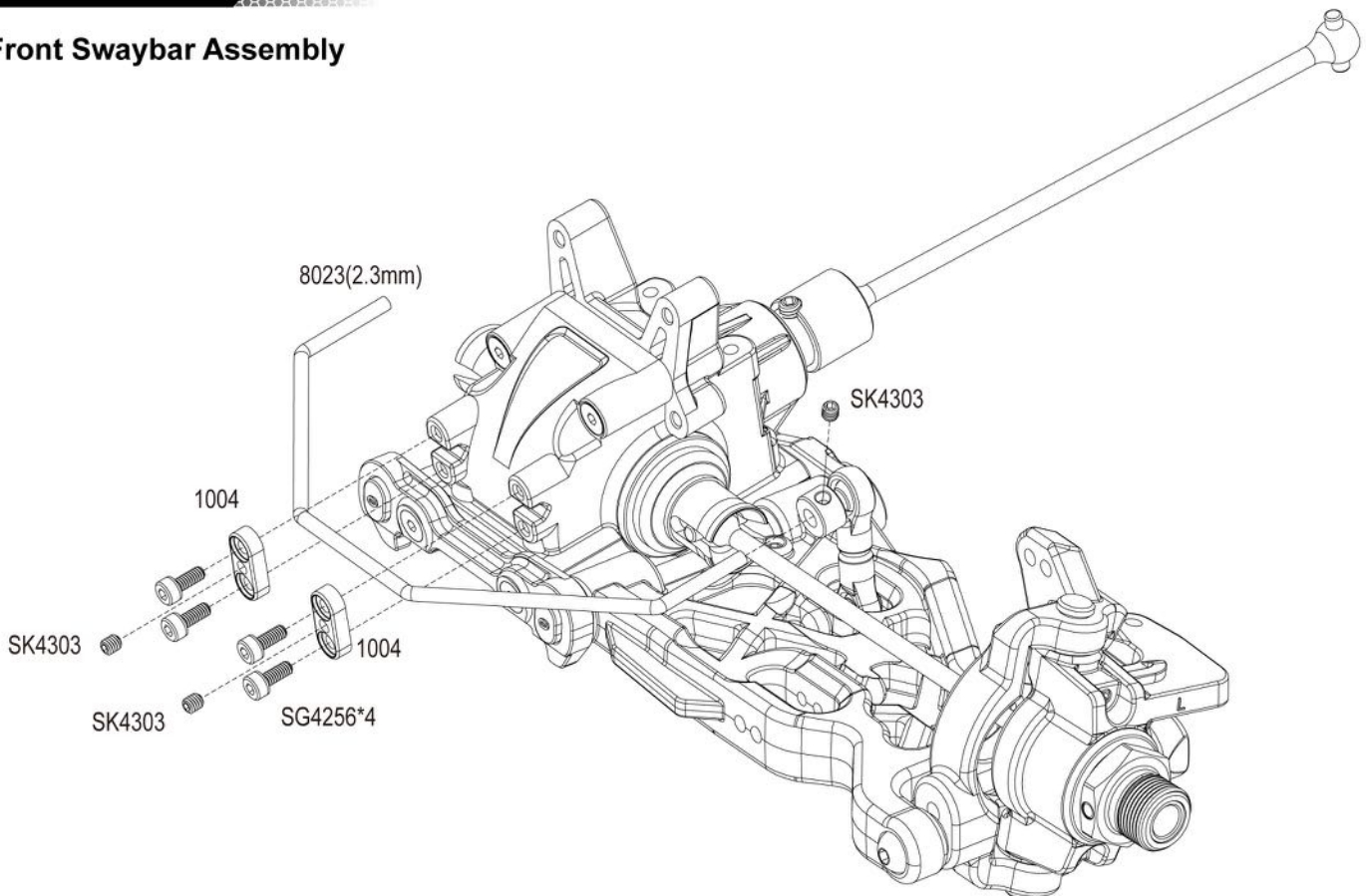
## STEP D - 3

### Front Suspension Arm Assembly



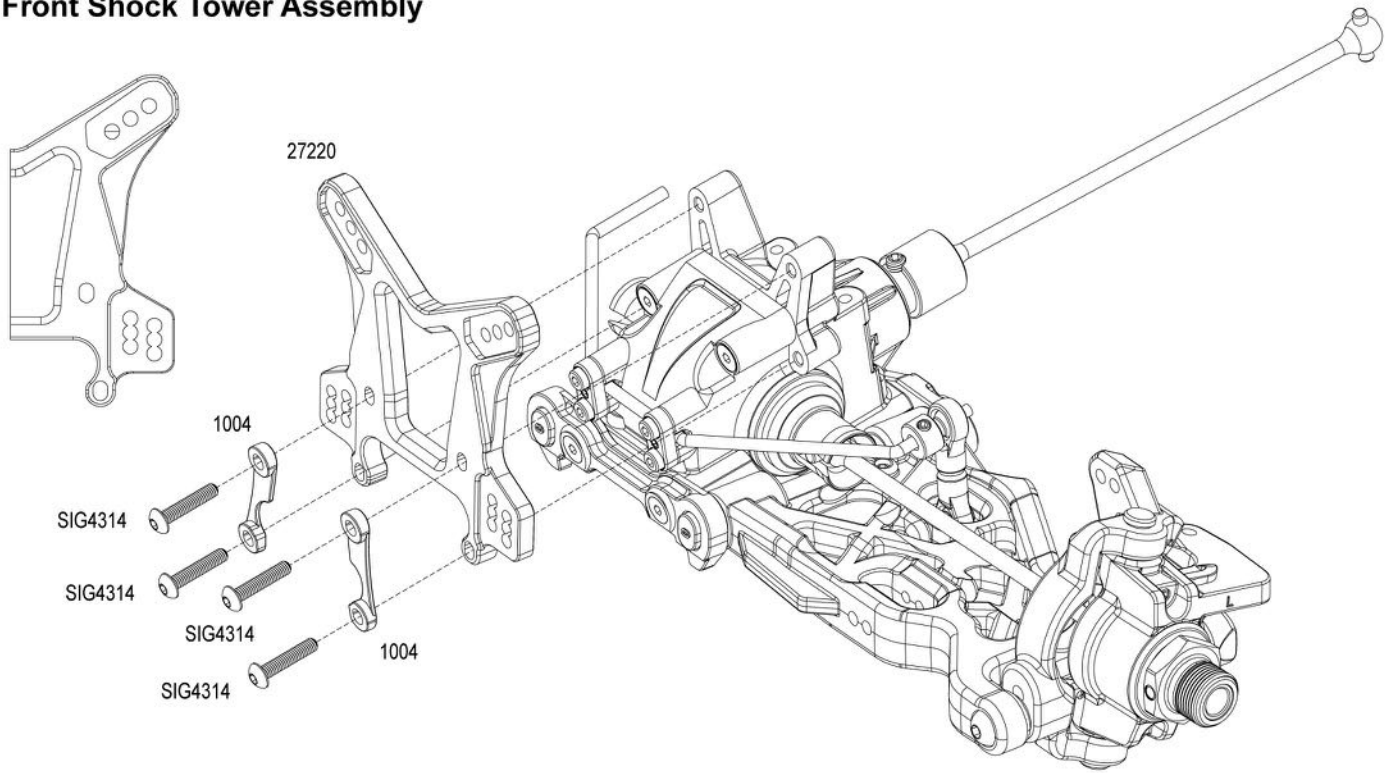
## STEP D - 4

### Front Swaybar Assembly



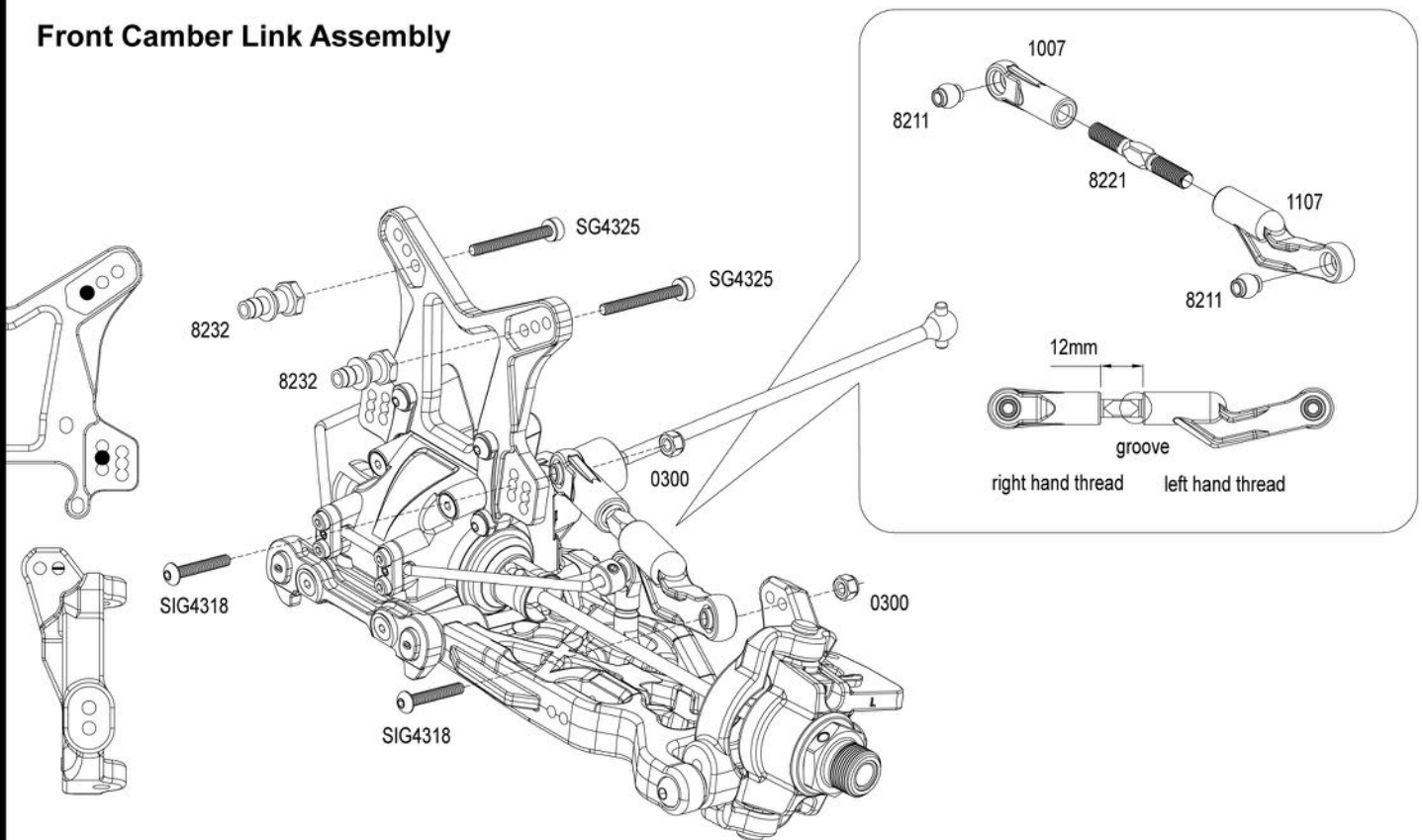
## STEP D - 5

### Front Shock Tower Assembly



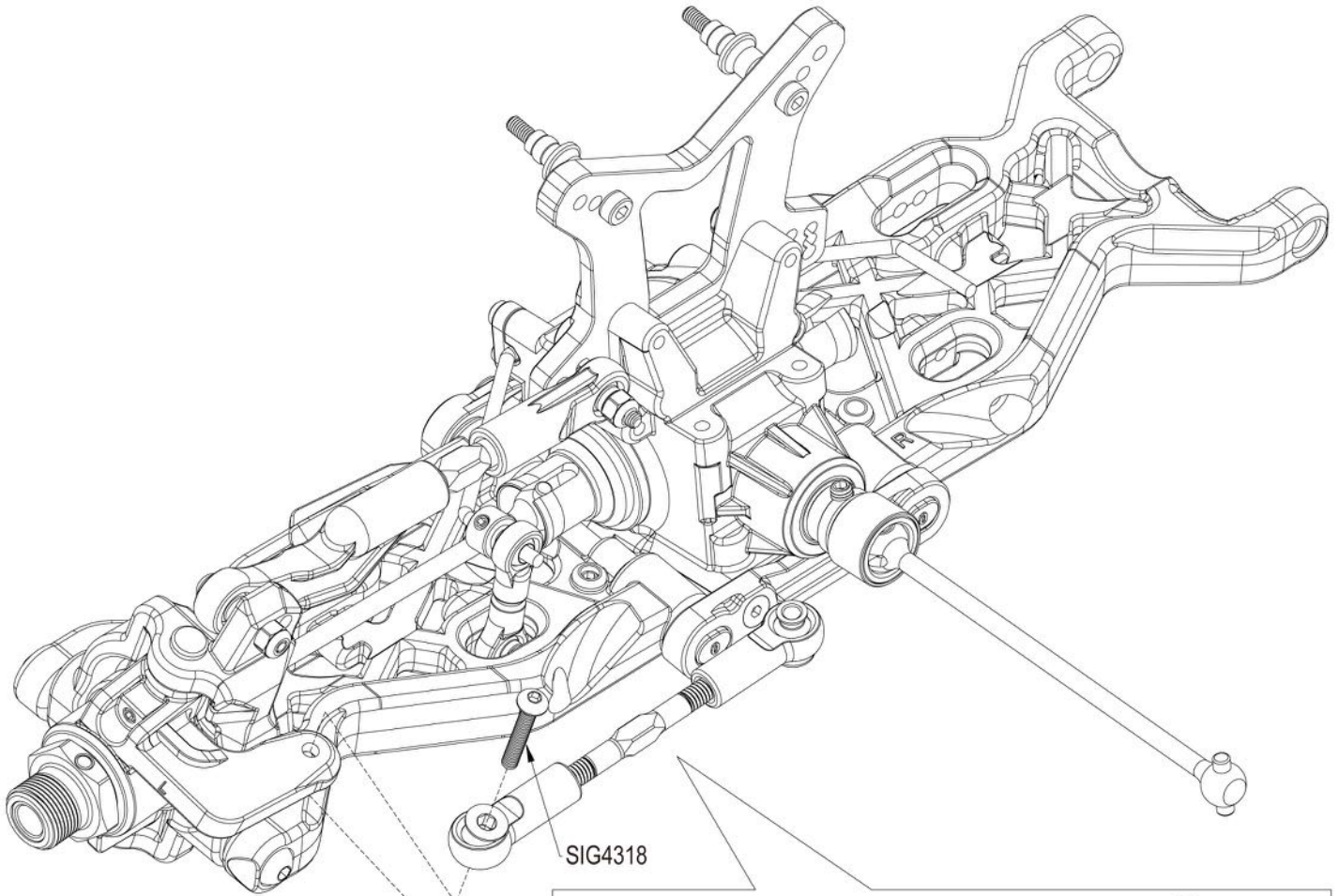
## STEP D - 6

### Front Camber Link Assembly



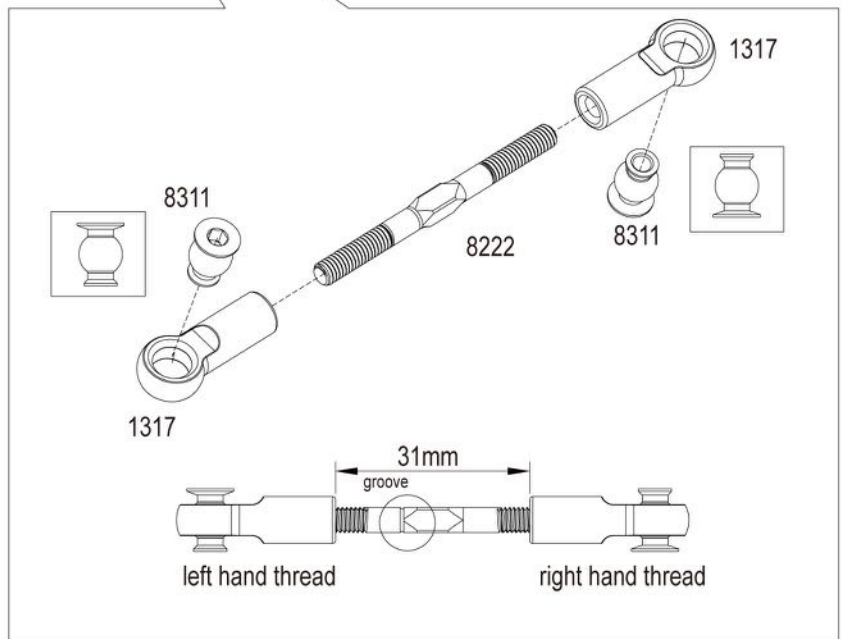
## STEP D - 7

### Front Steering Link Assembly



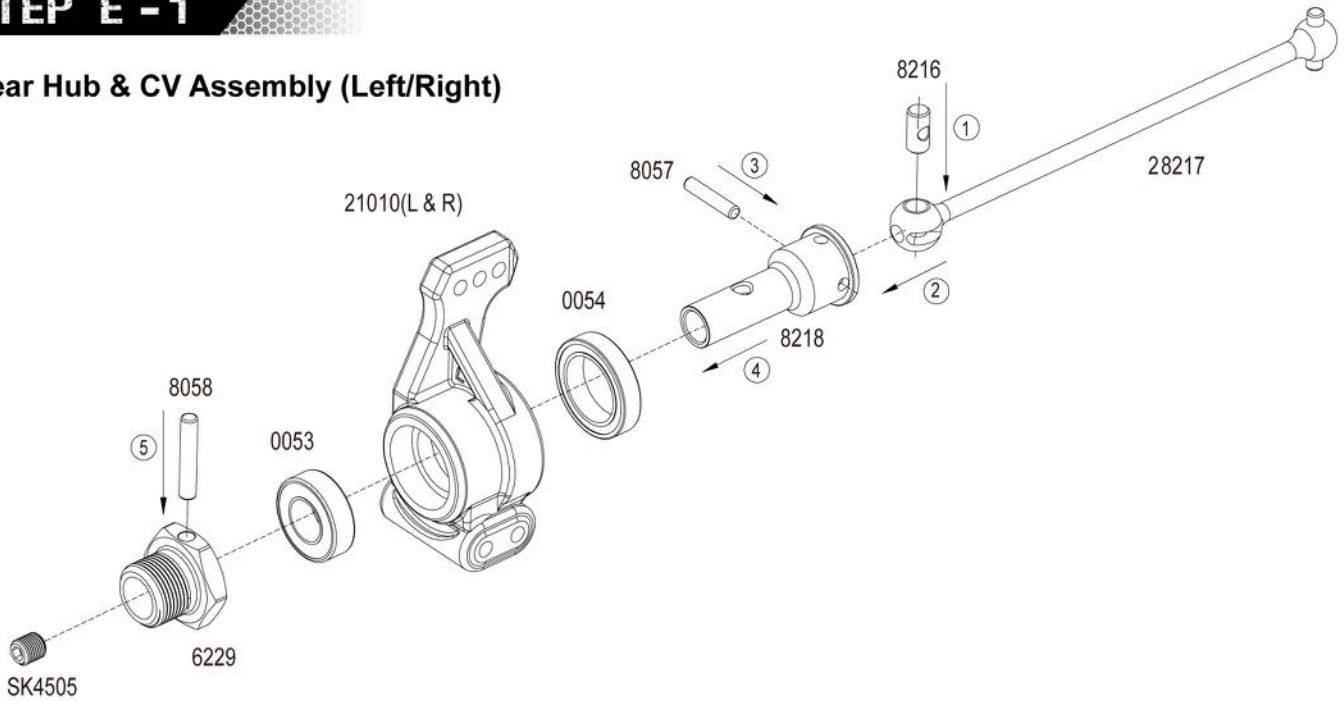
0300

SIG4318



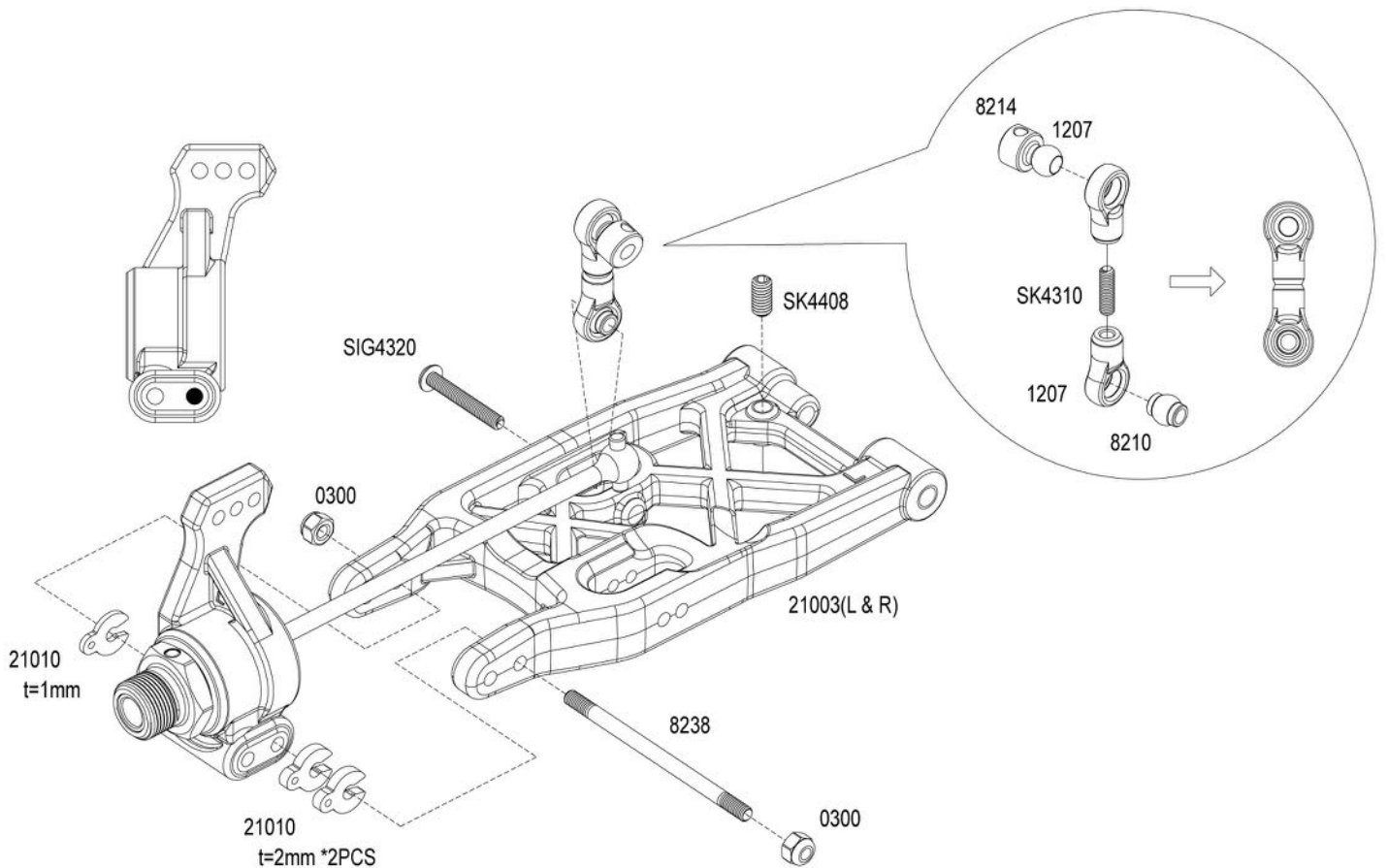
## STEP E - 1

### Rear Hub & CV Assembly (Left/Right)



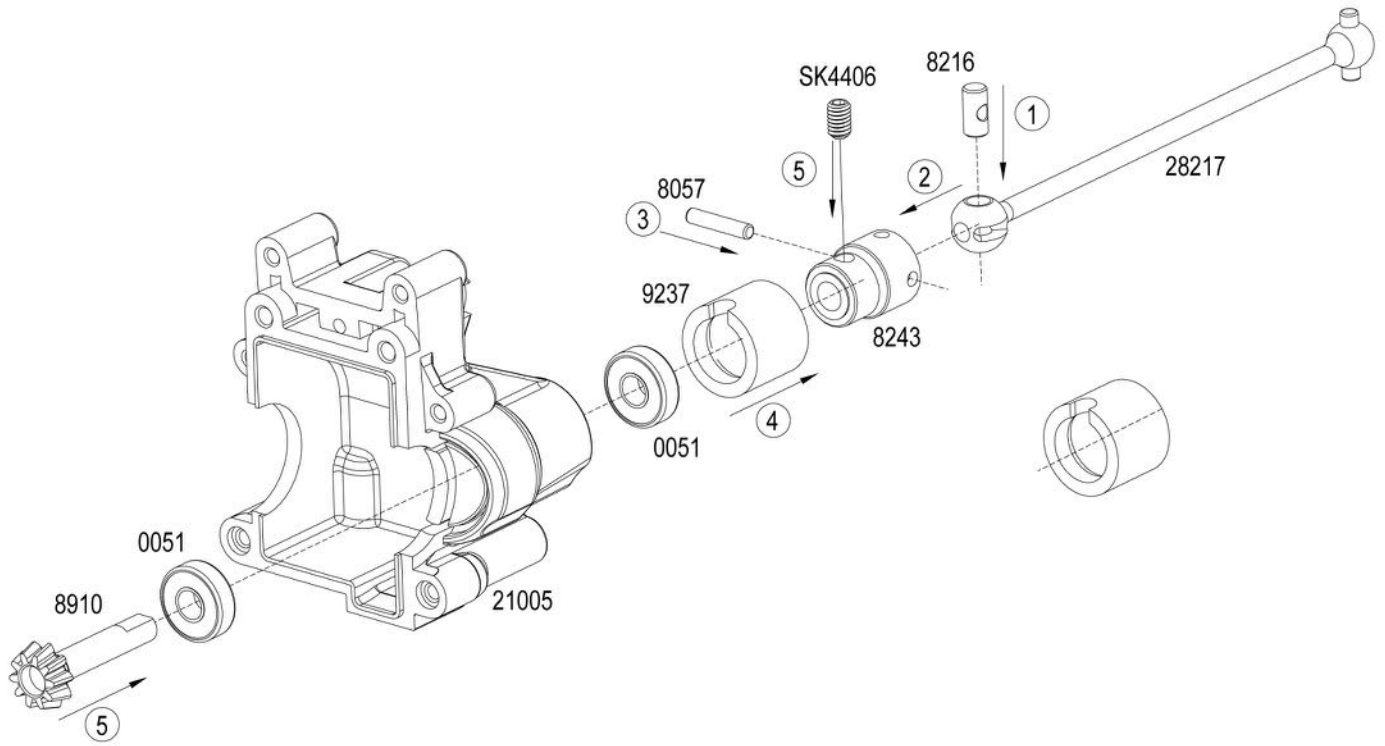
## STEP E - 2

### Rear Hub & CV Assembly (Left/Right)



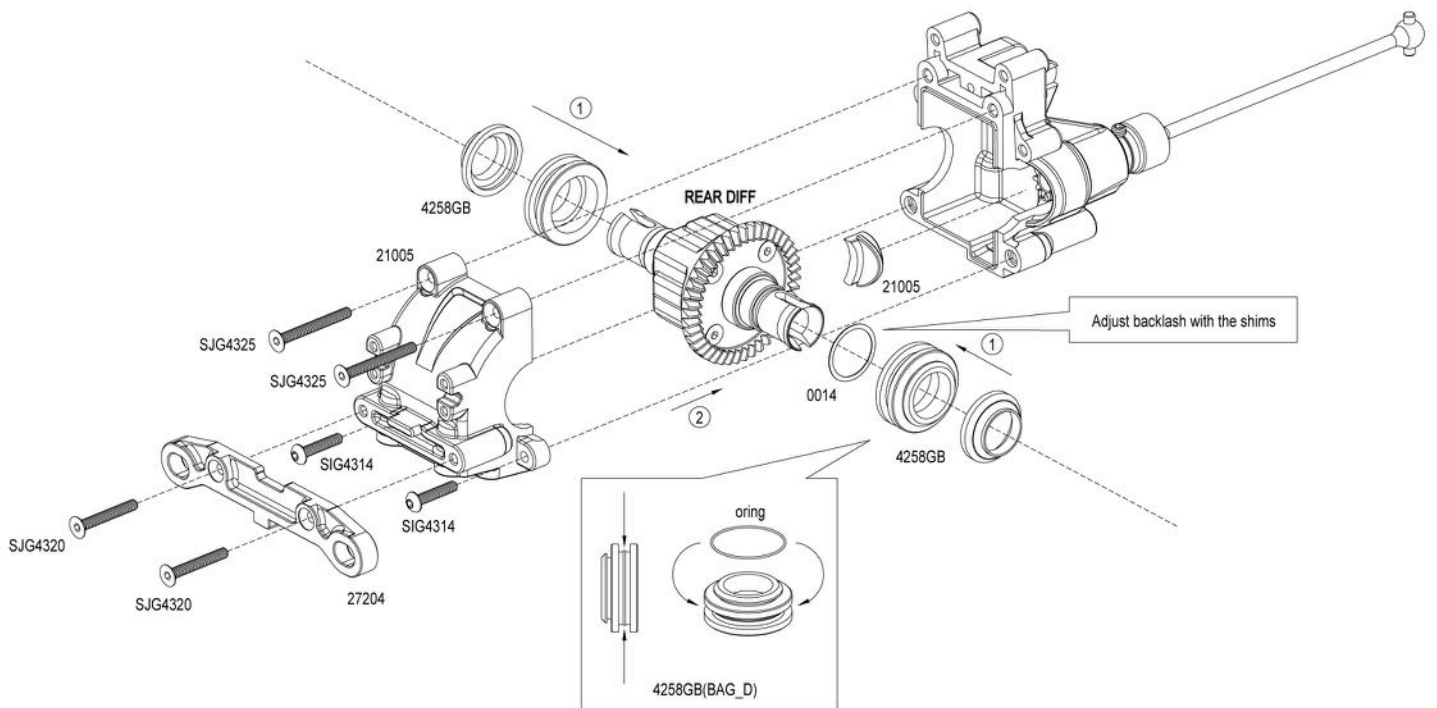
## STEP F - 1

### Rear Diff Case & CV Assembly



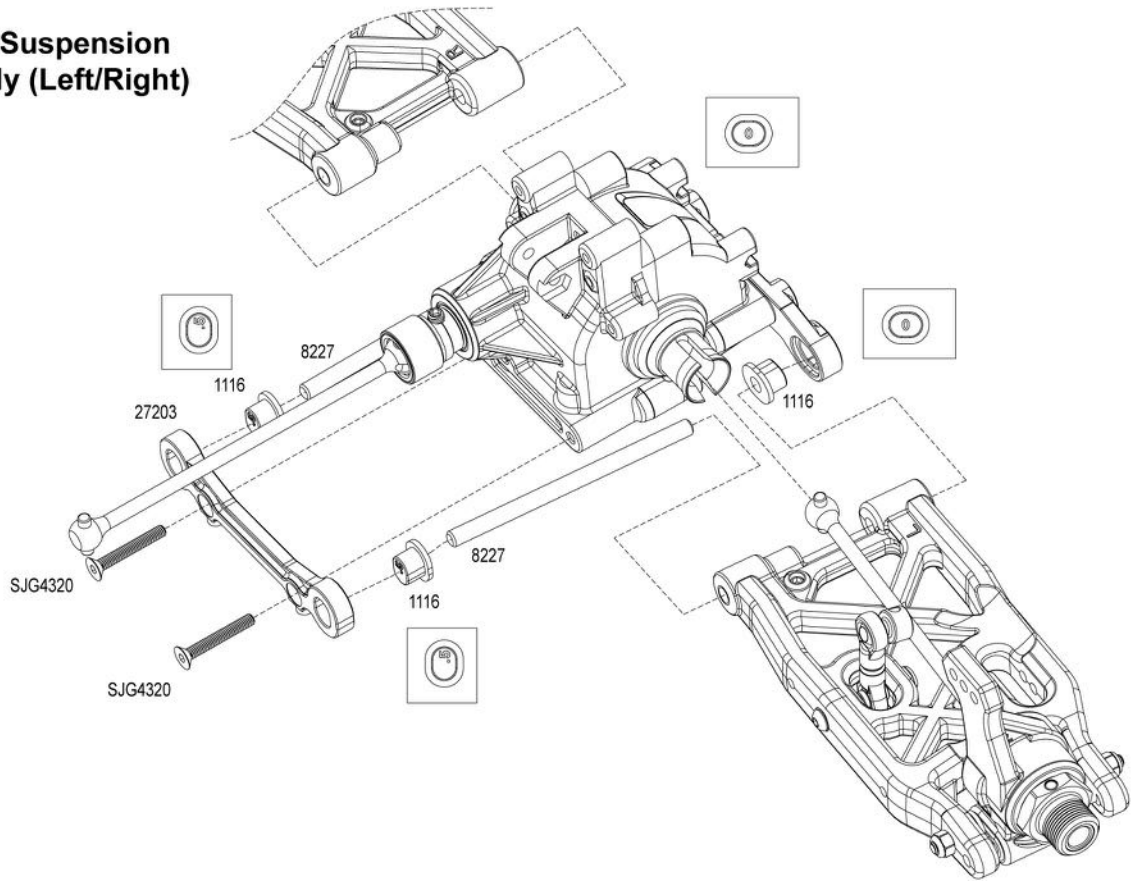
## STEP F - 2

### Rear Diff Install



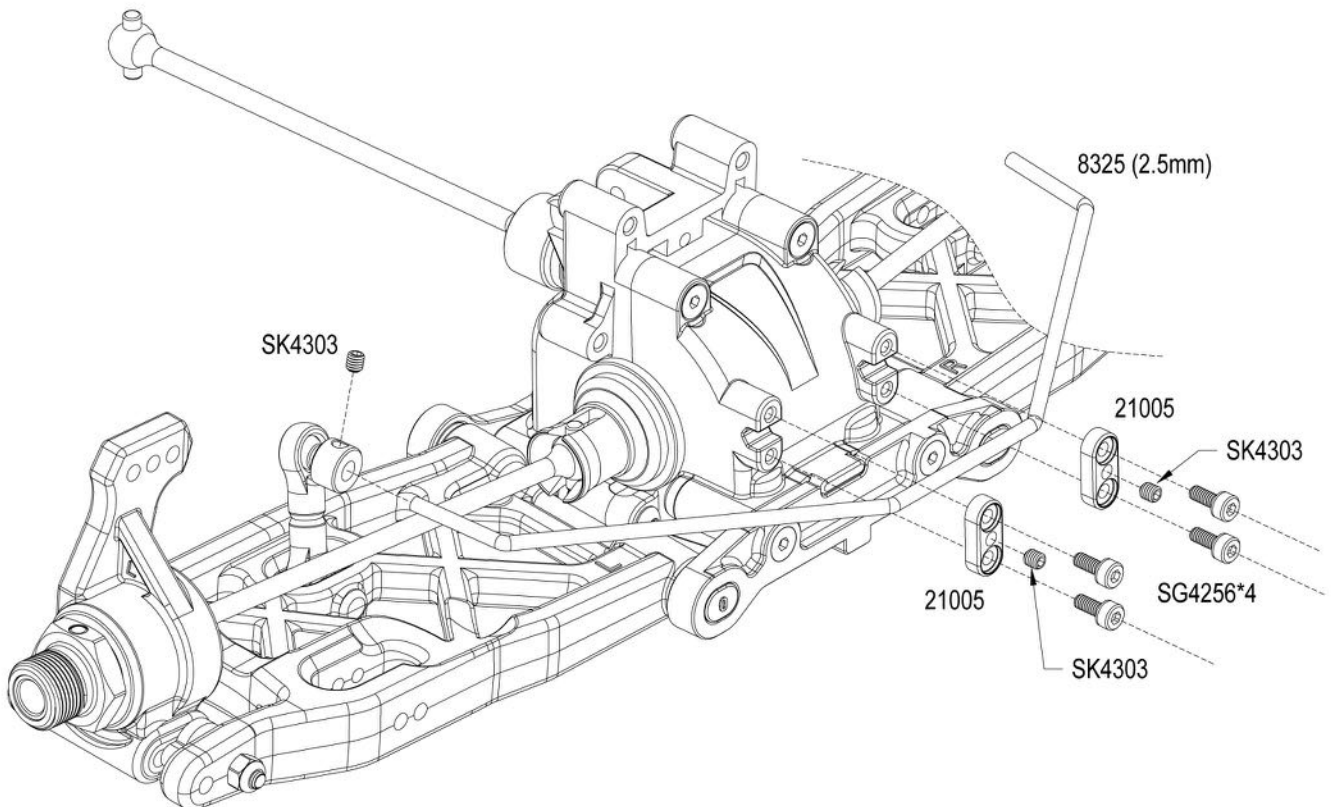
## STEP F - 3

### Rear Hubs & Suspension Arm Assembly (Left/Right)



## STEP F - 4

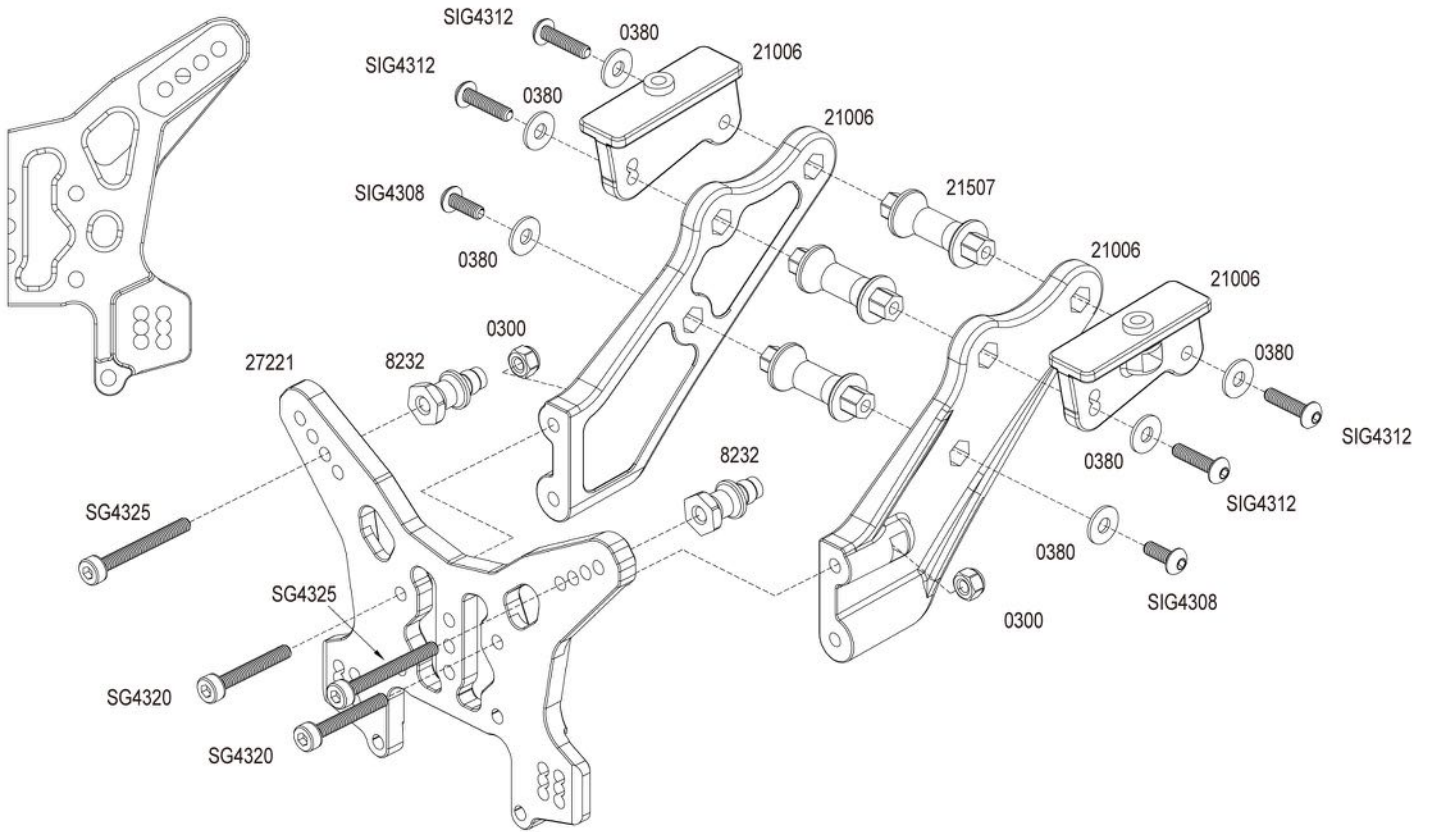
### Rear Swaybar Assembly





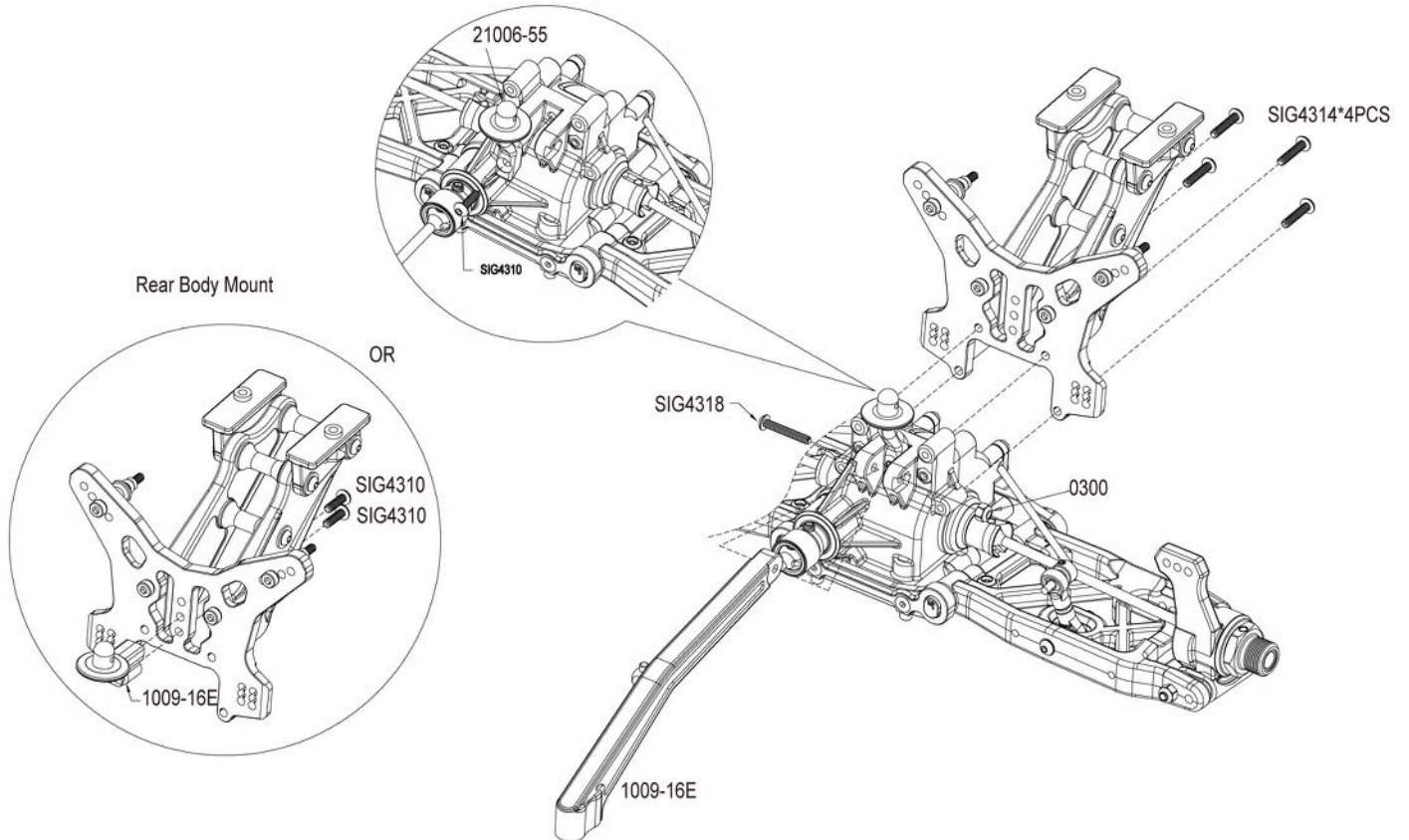
## STEP F - 5

### Wind Mount Assembly



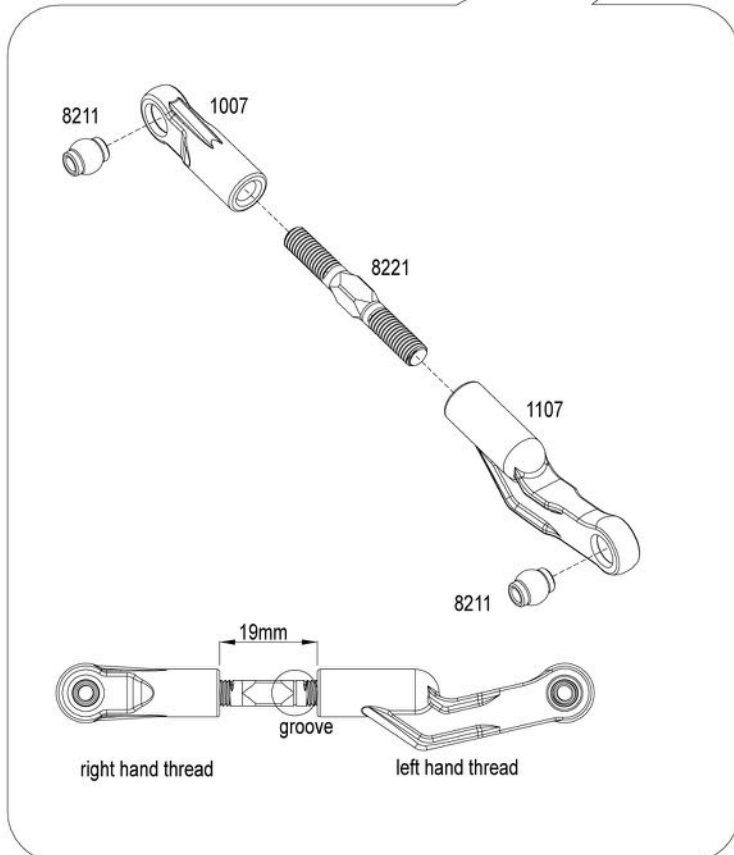
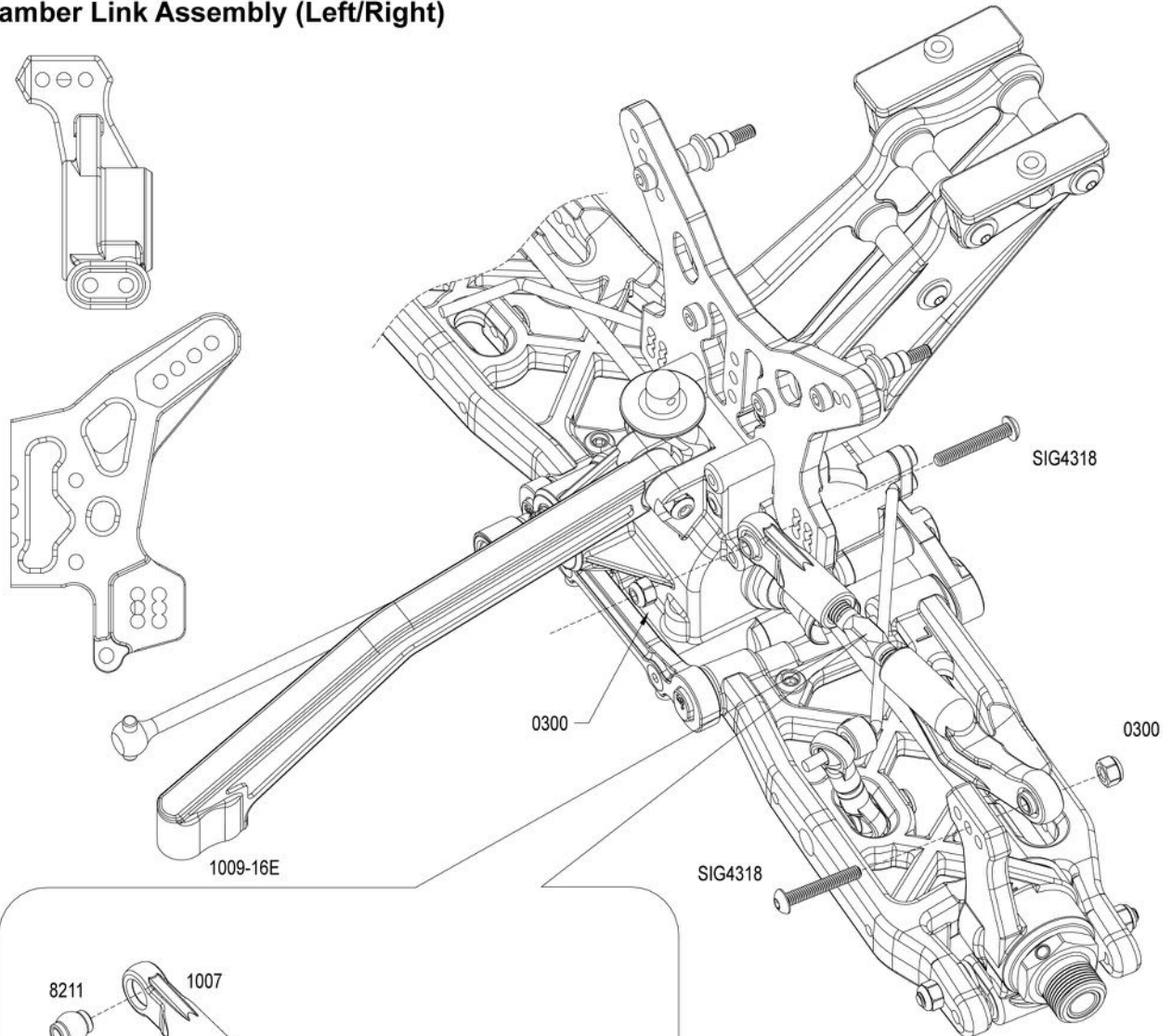
## STEP F - 6

### Rear Shock Tower Installation



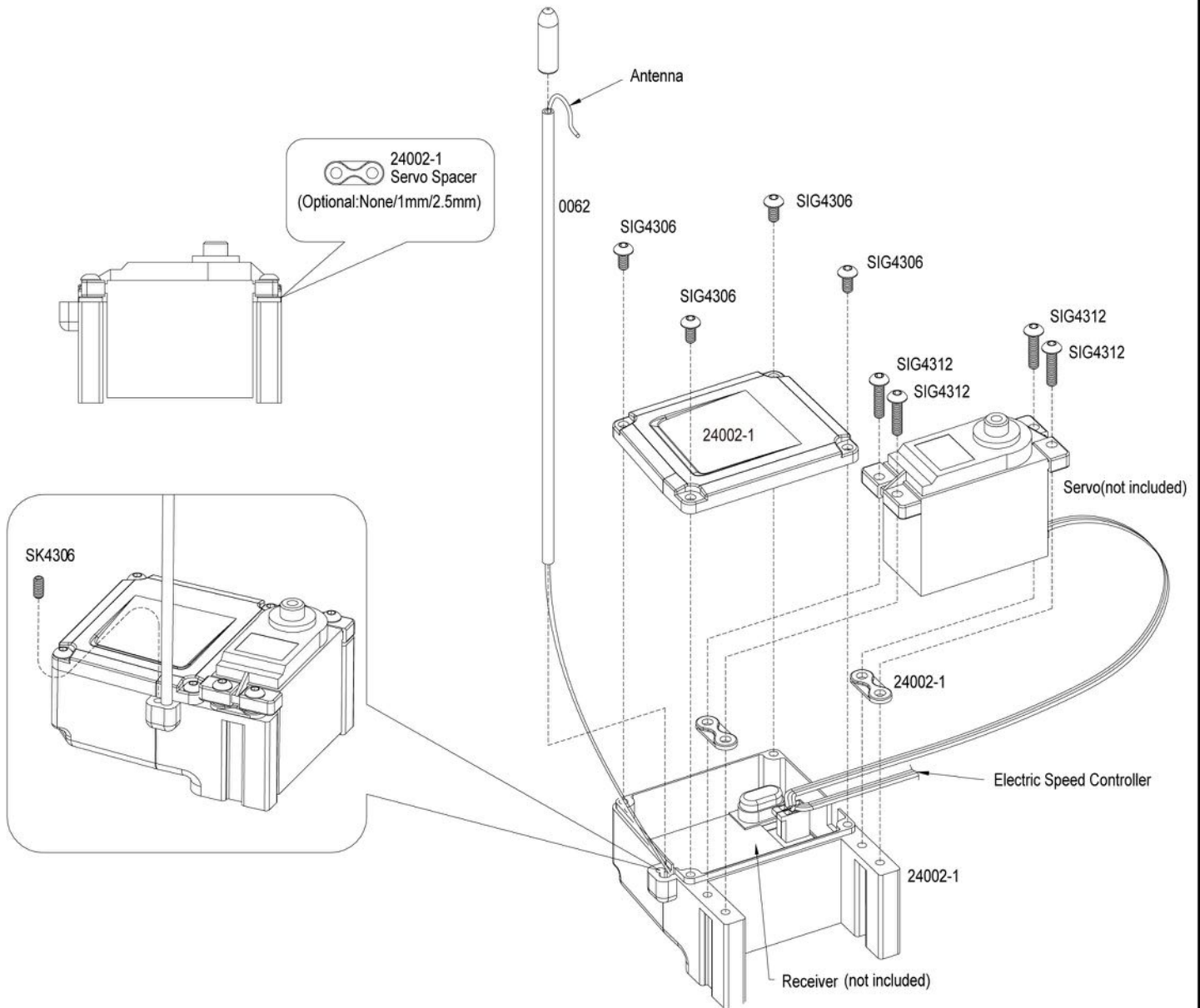
## STEP F - 7

### Rear Camber Link Assembly (Left/Right)



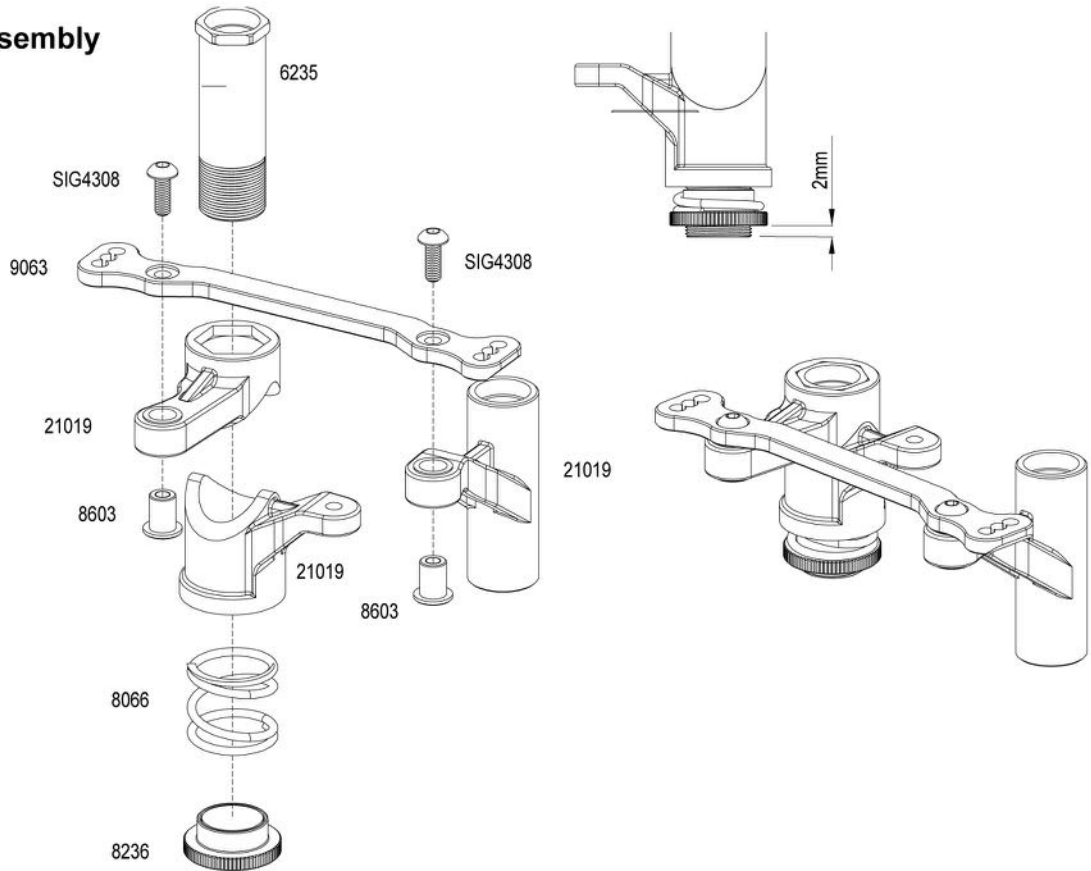
## STEP H-1

### Receiver & Steer Servo Assembly



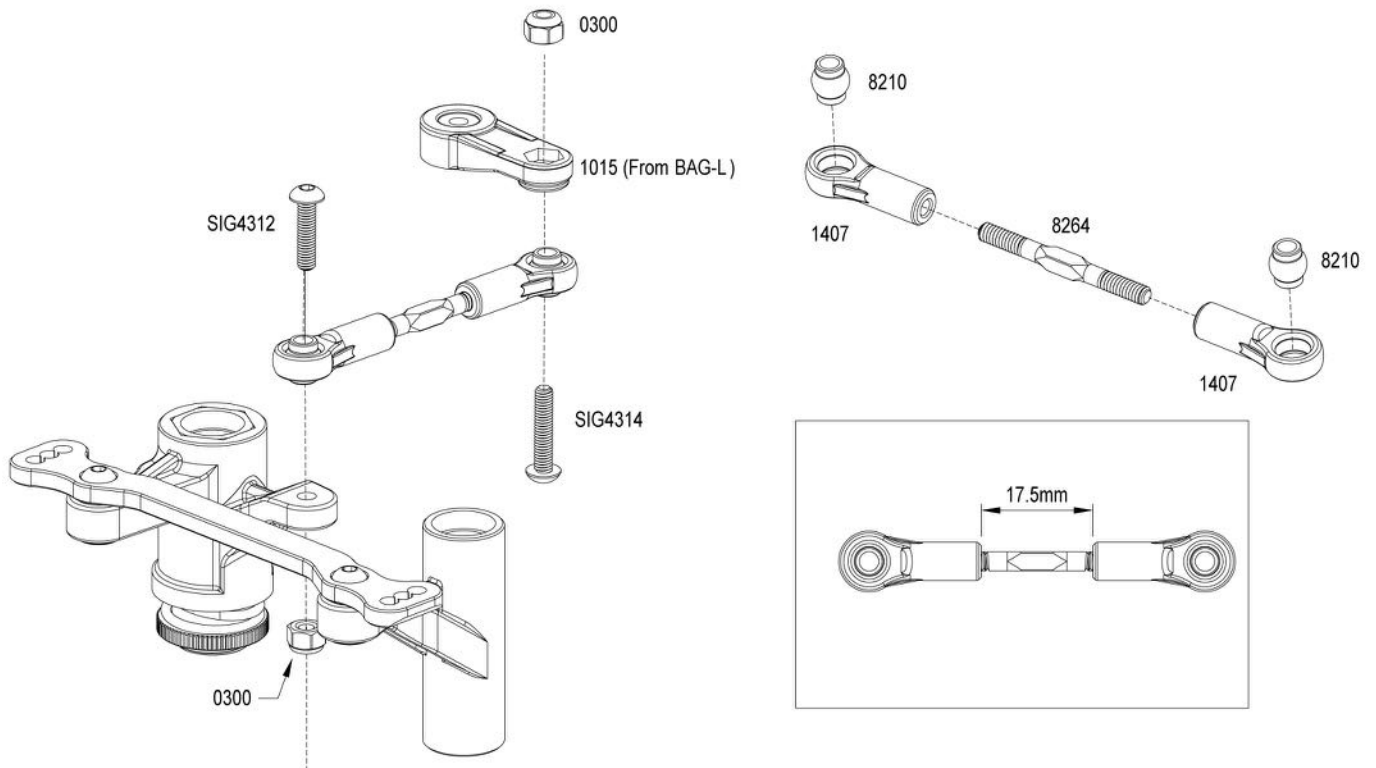
## STEP J - 1

### Servo Saver Assembly



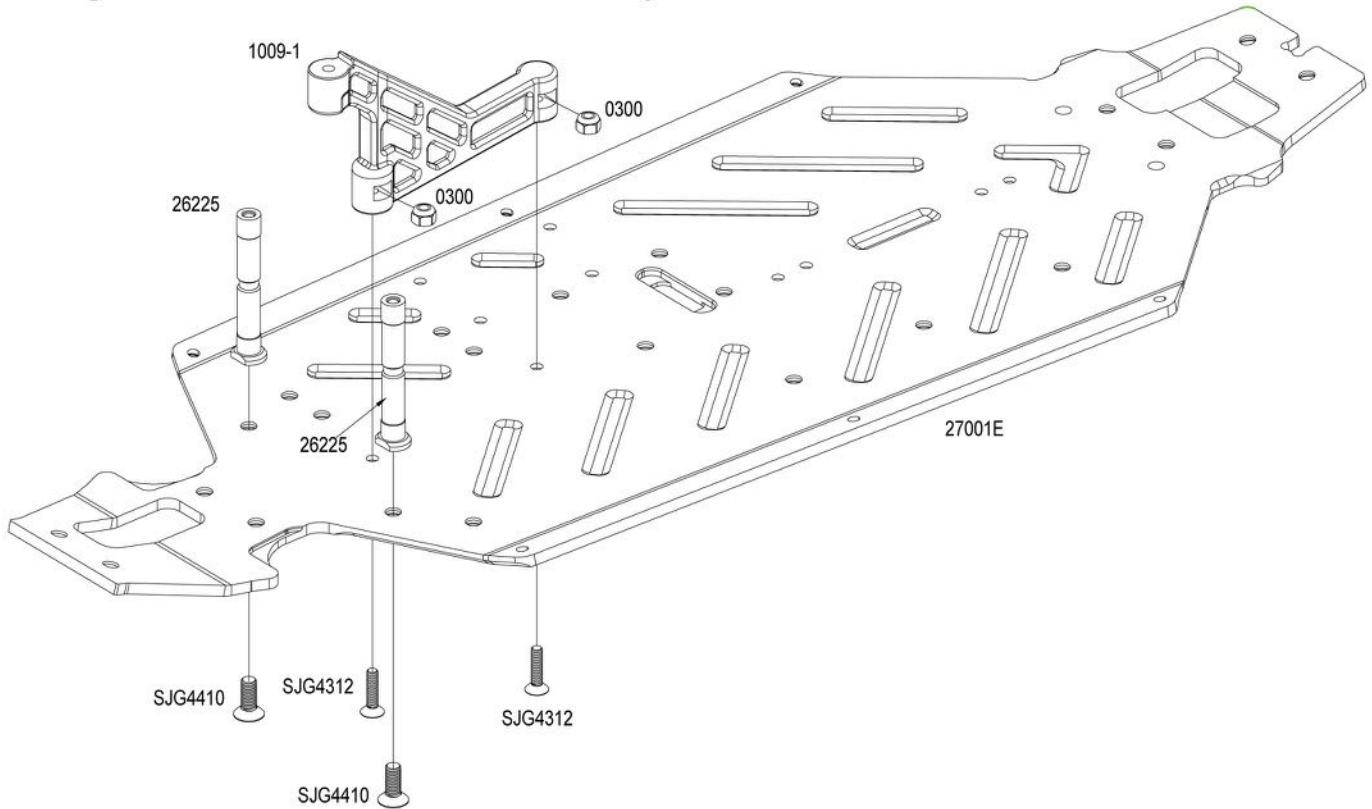
## STEP J - 2

### Steering Servo Link Assembly



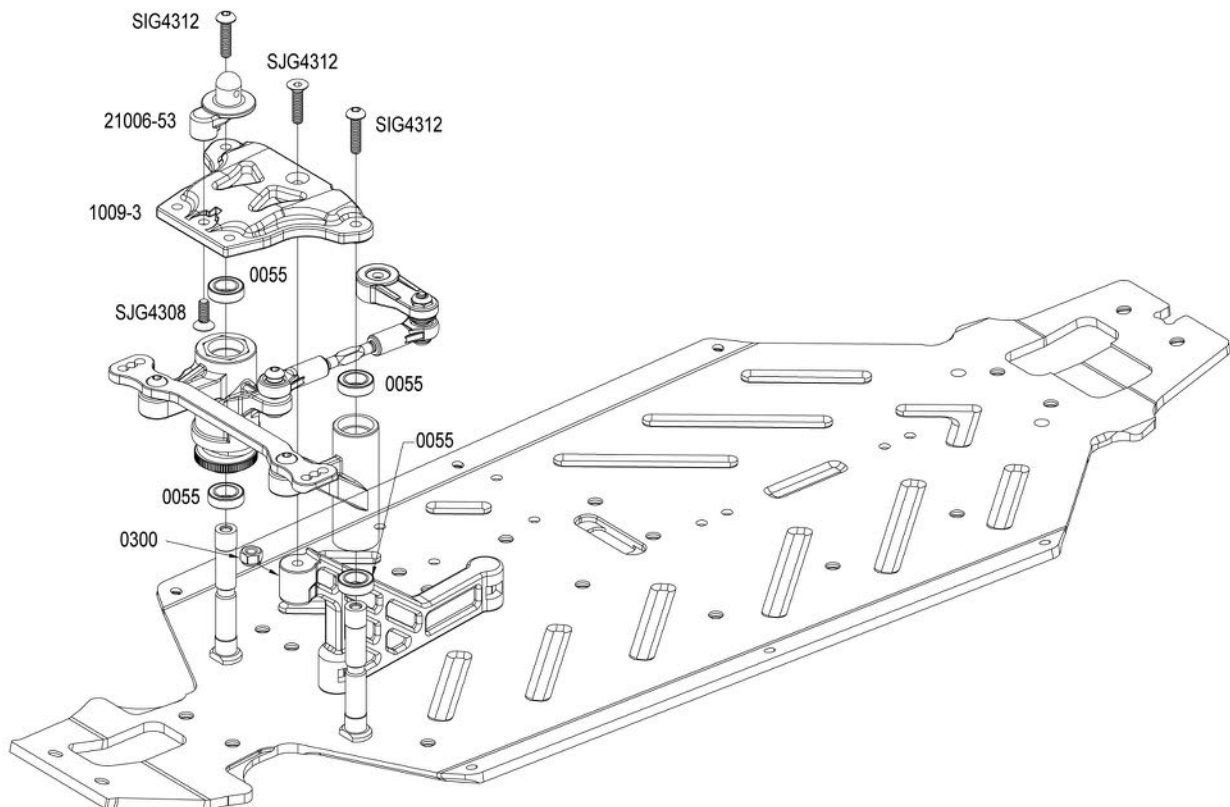
## STEP J - 3

### Steering Post & Front Chassis Brace Assembly



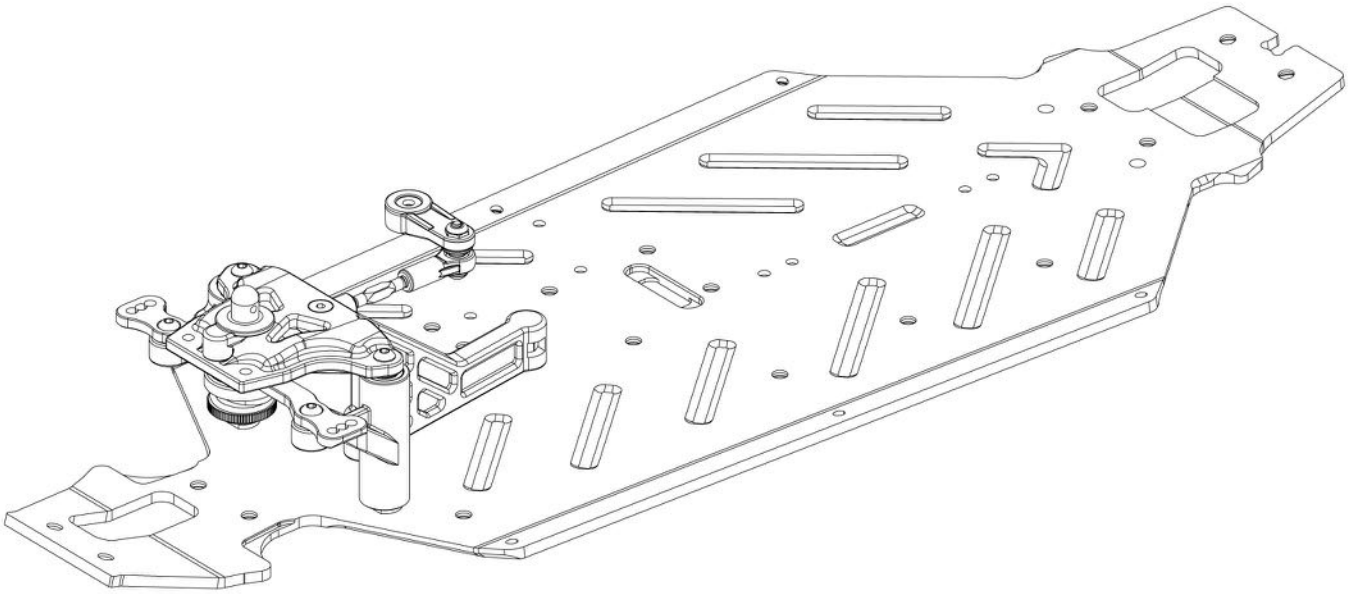
## STEP J - 4

### Steering Saver & Front Chassis Brace Assembly



## STEP J-5

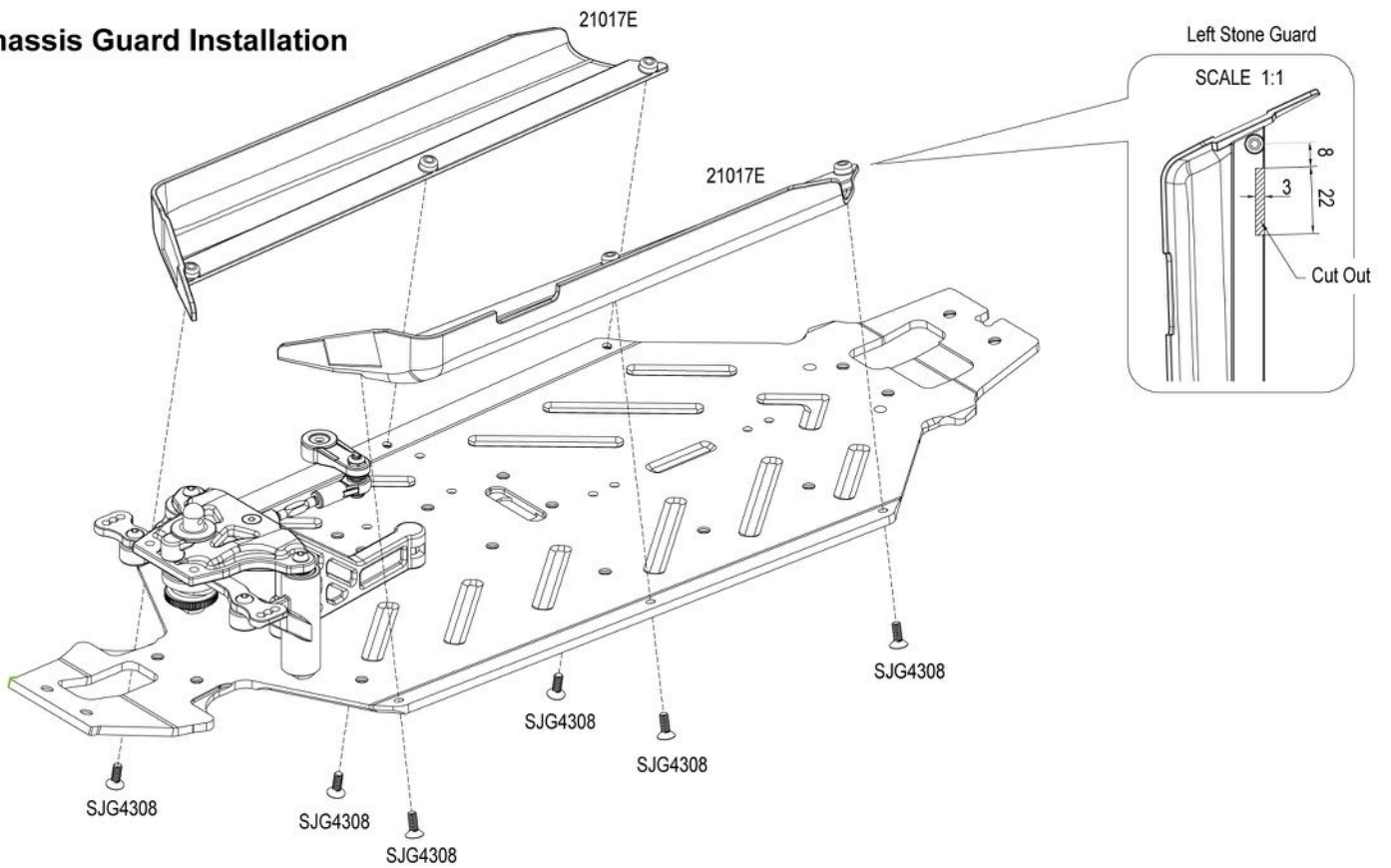
### Completed Steering Assembly



# BAG K

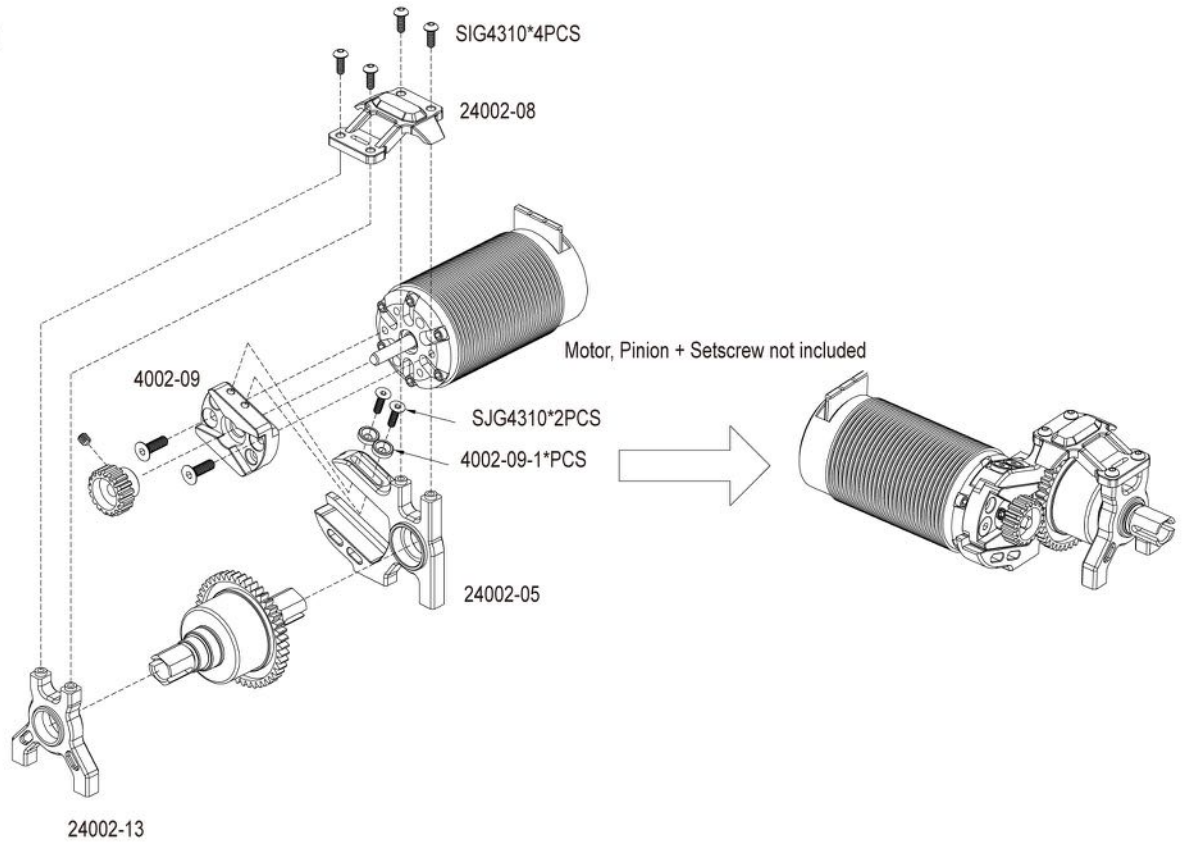
## STEP K-1

### Chassis Guard Installation



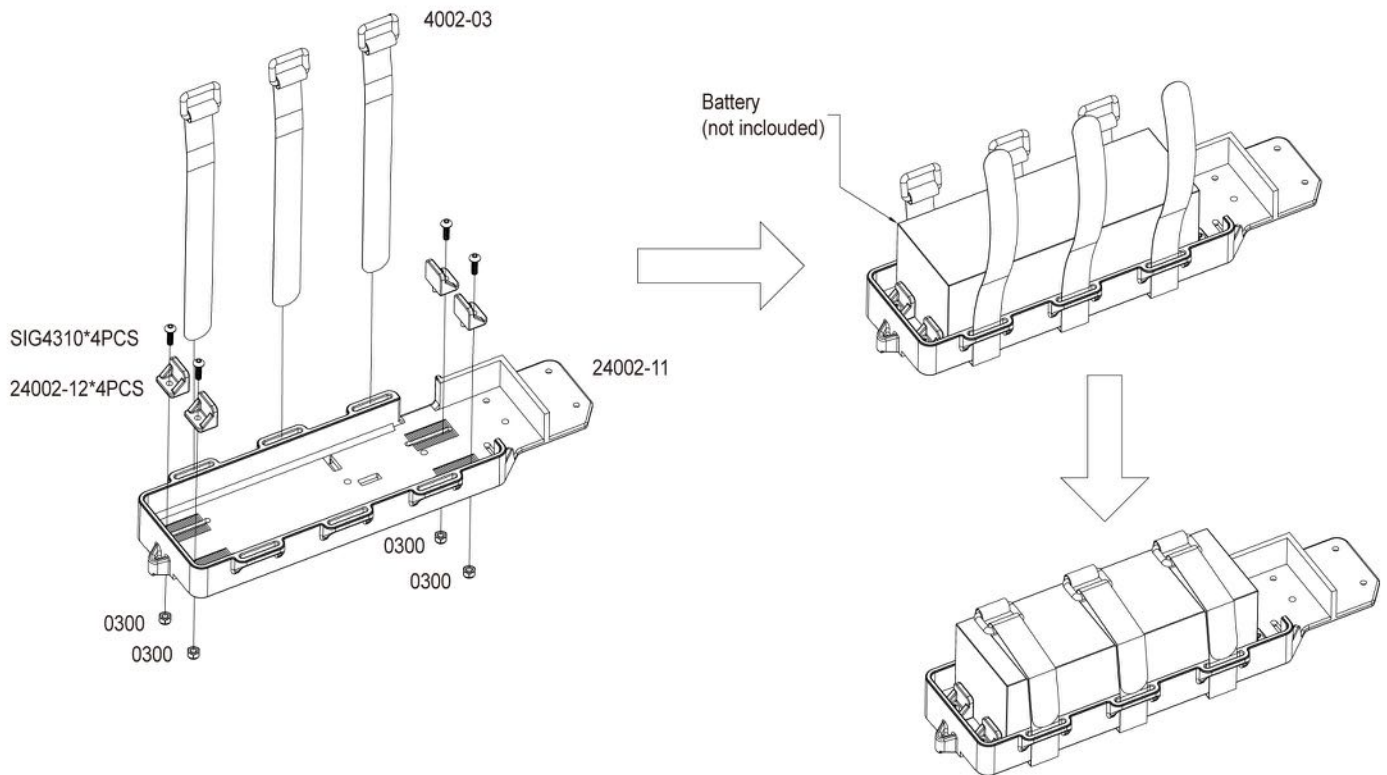
## STEP Q - 1

### Motor System



## STEP Q - 2

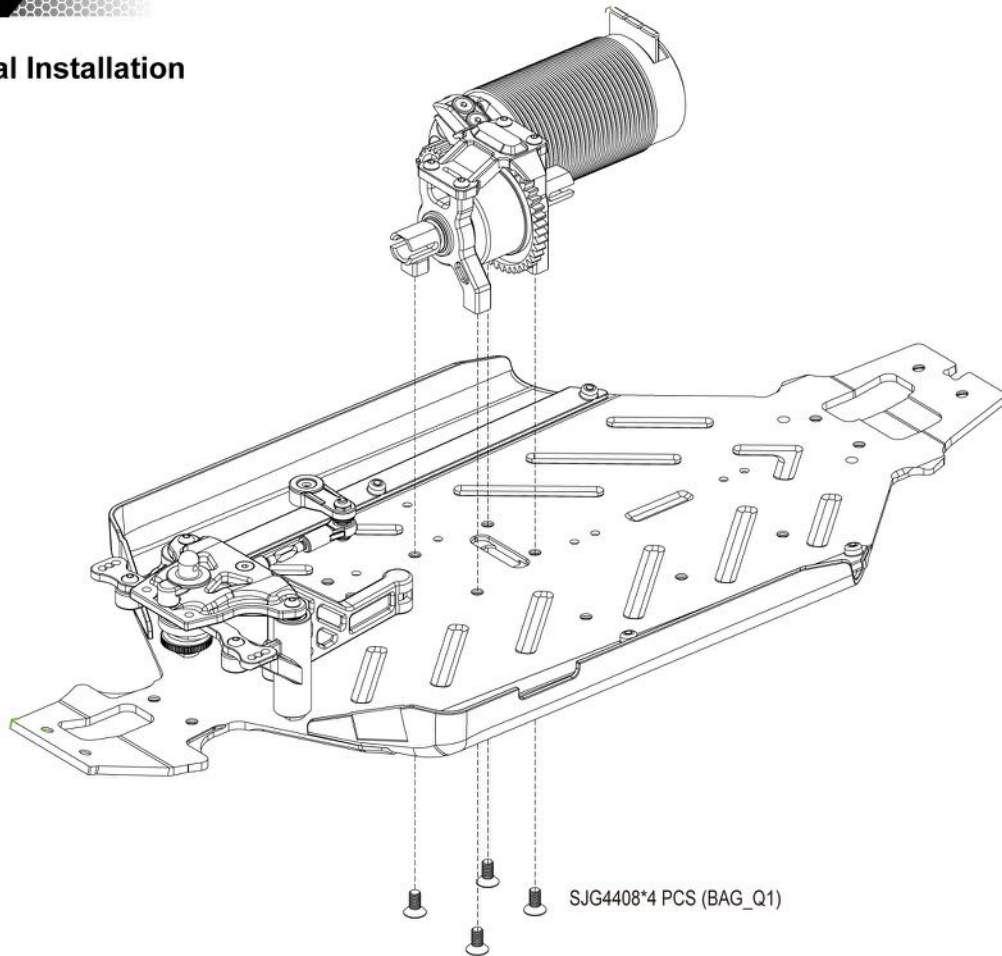
### Battery Tray Installation



# CHASSIS INSTALL **AZISE**

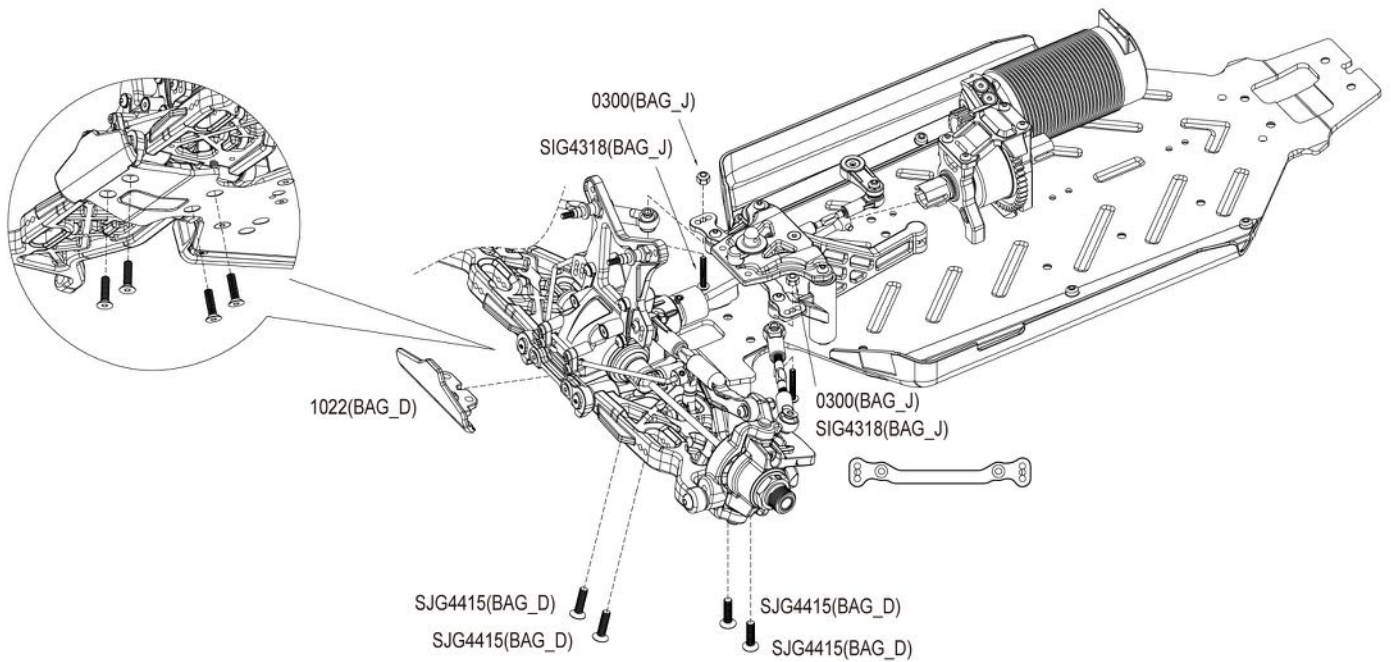
## STEP - 1

### Center Differential Installation



## STEP - 2

### Front End Installation

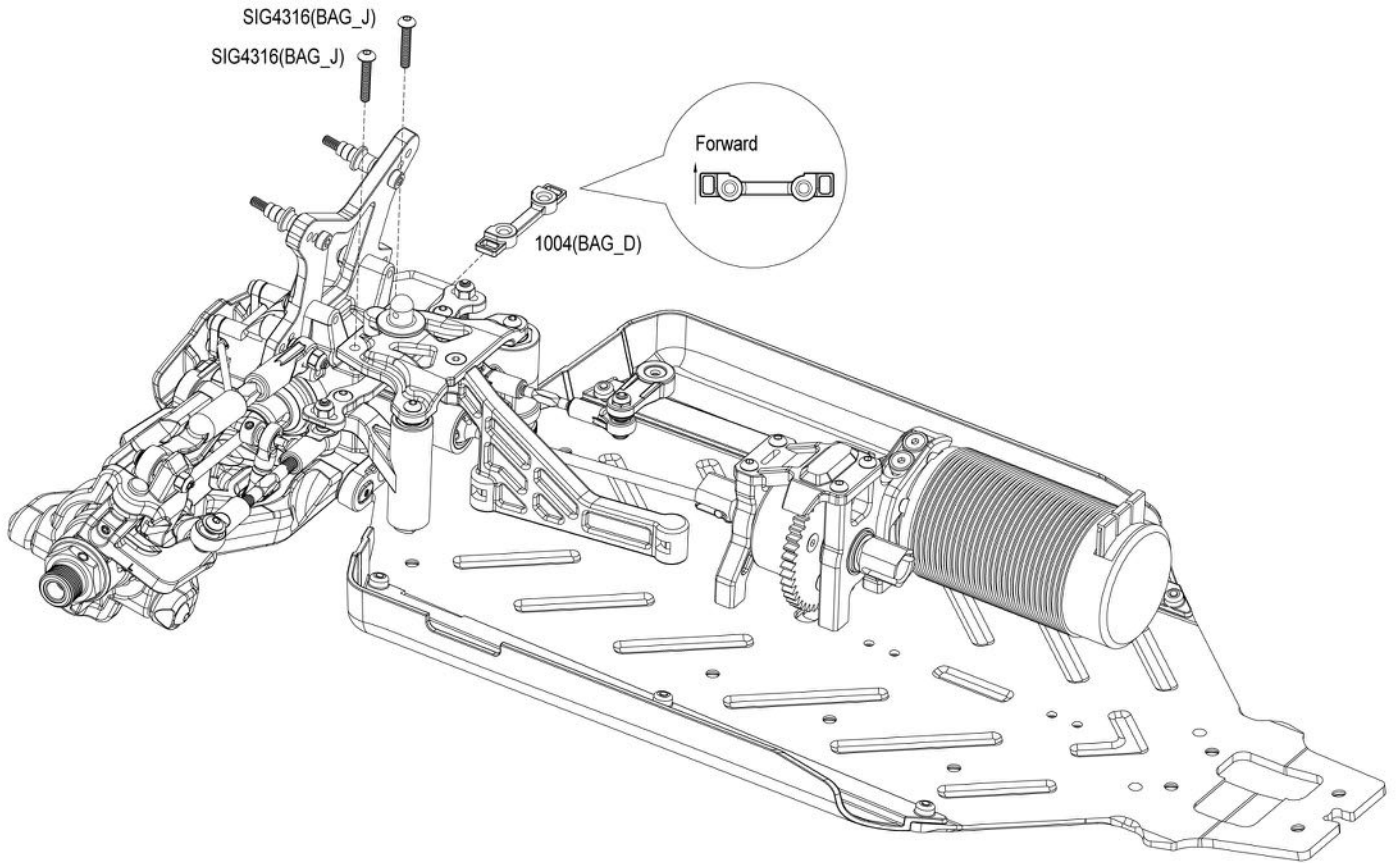




# CHASSIS INSTALL **A215E**

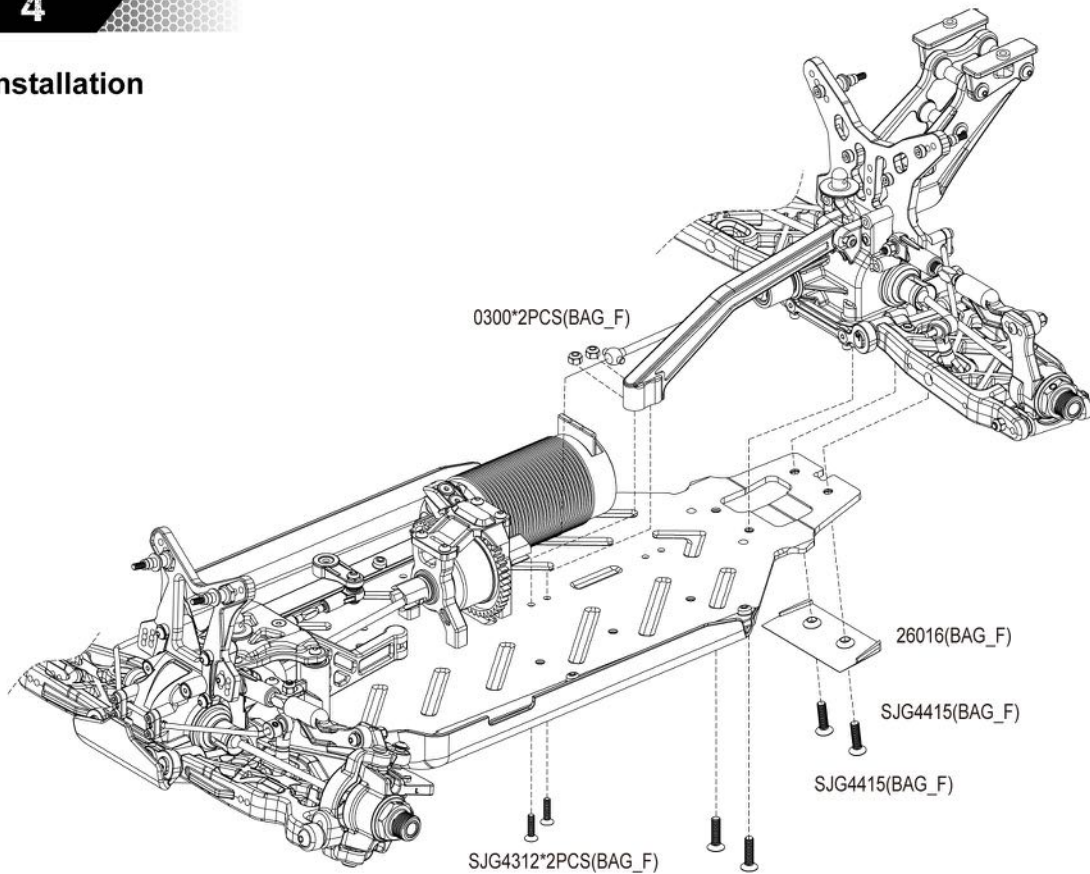
## STEP - 3

### Front End Installation



## STEP - 4

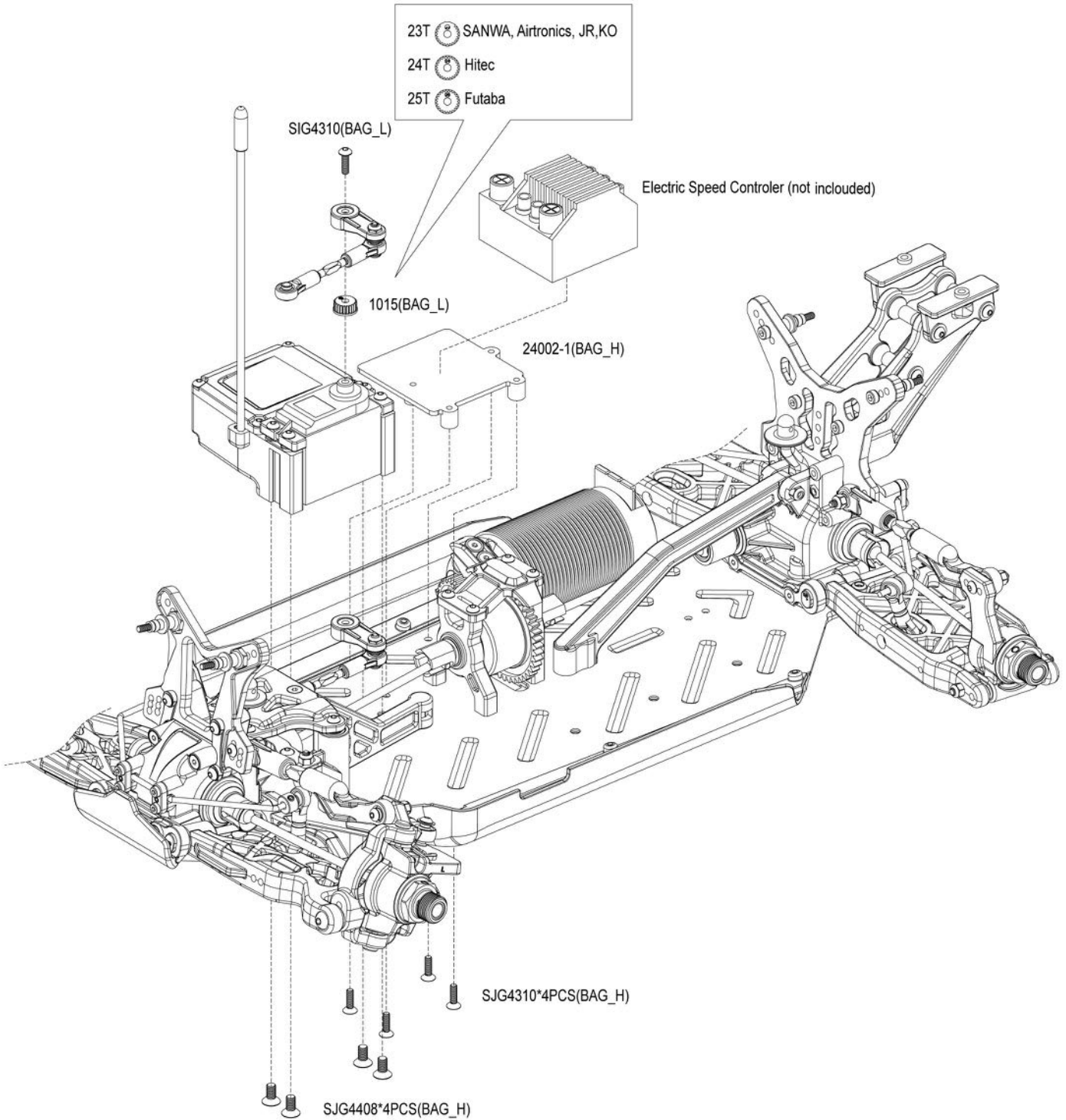
### Rear End Installation



# CHASSIS INSTALL **AZISE**

## STEP - 5

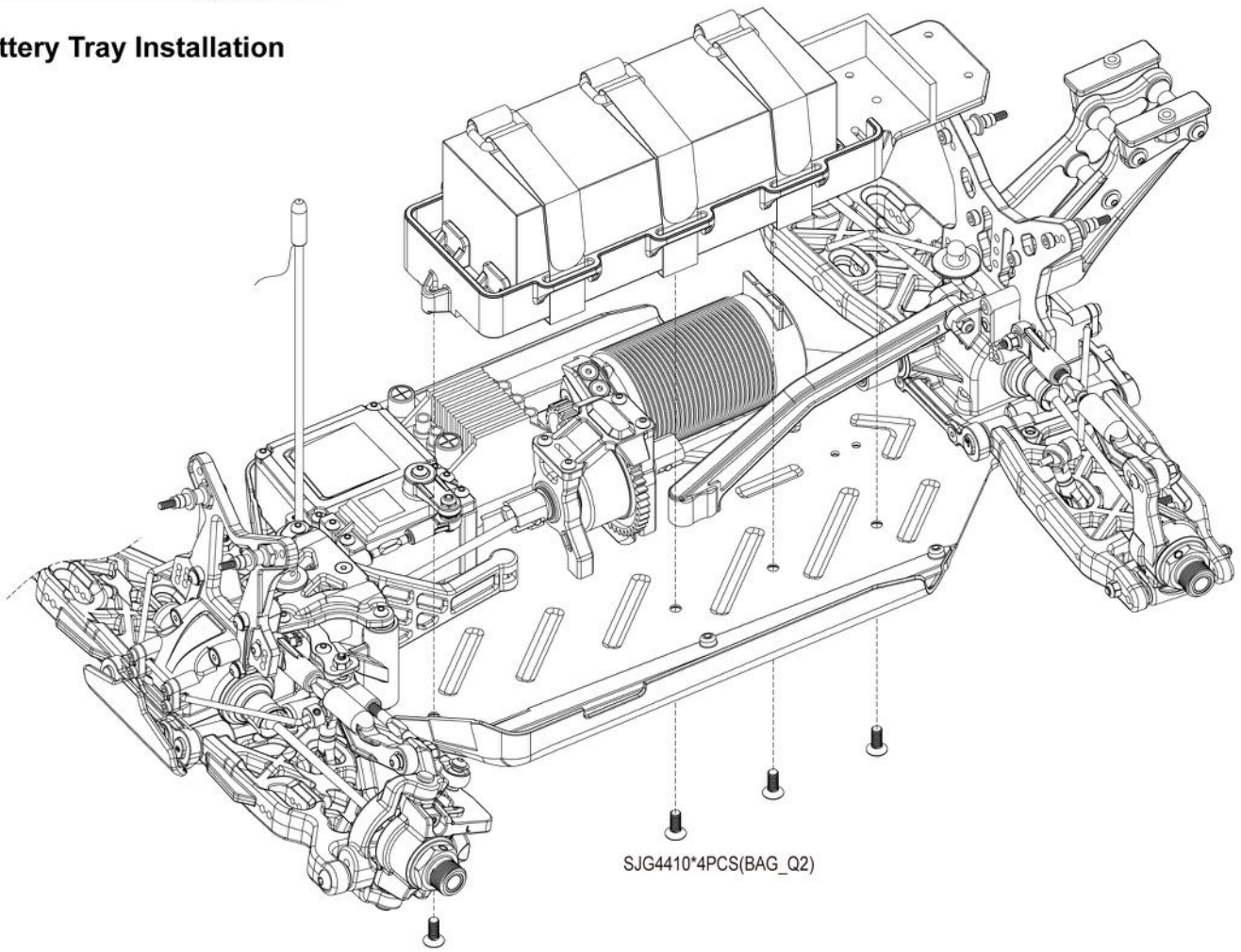
### Receiver & Steer Servo Assembly



# CHASSIS INSTALLAZIONE

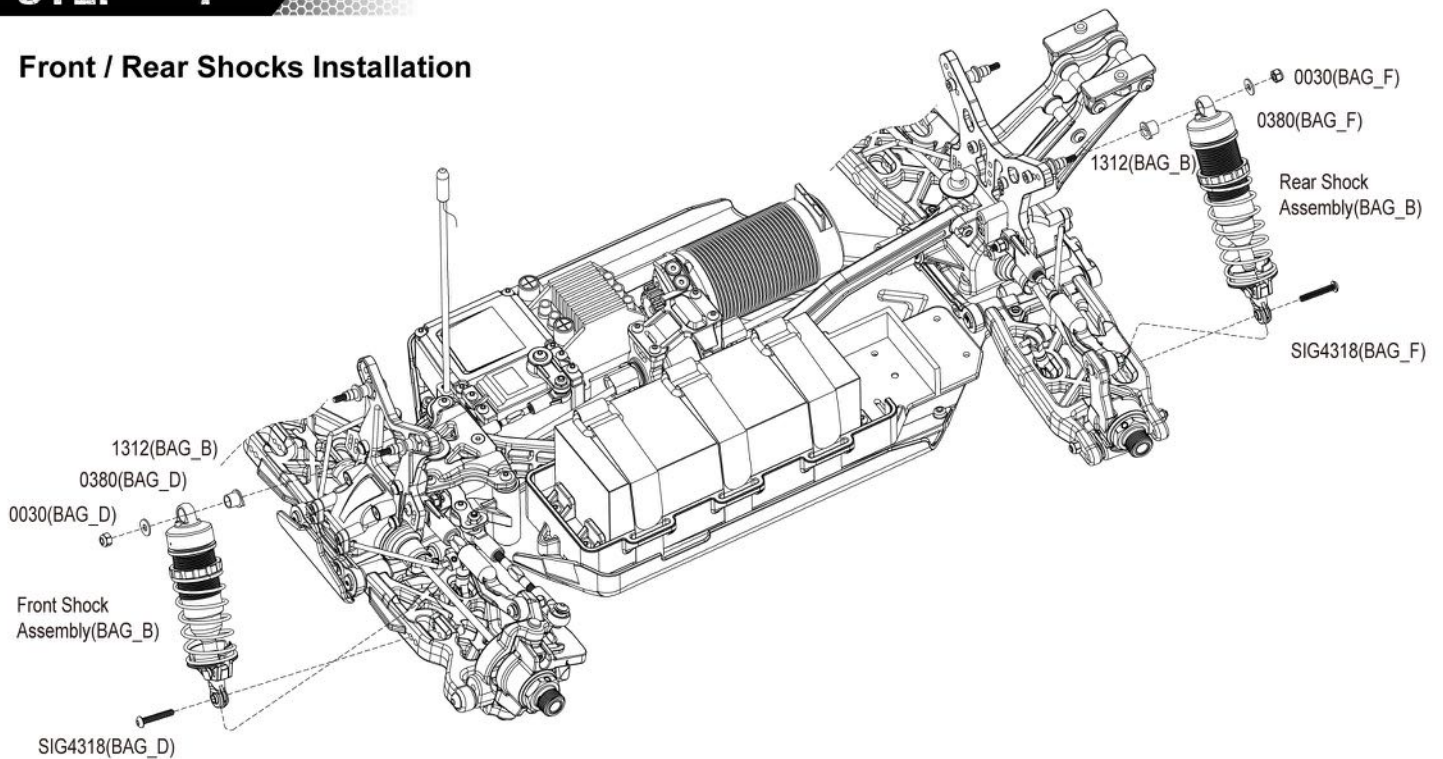
## STEP - 6

### Battery Tray Installation



## STEP - 7

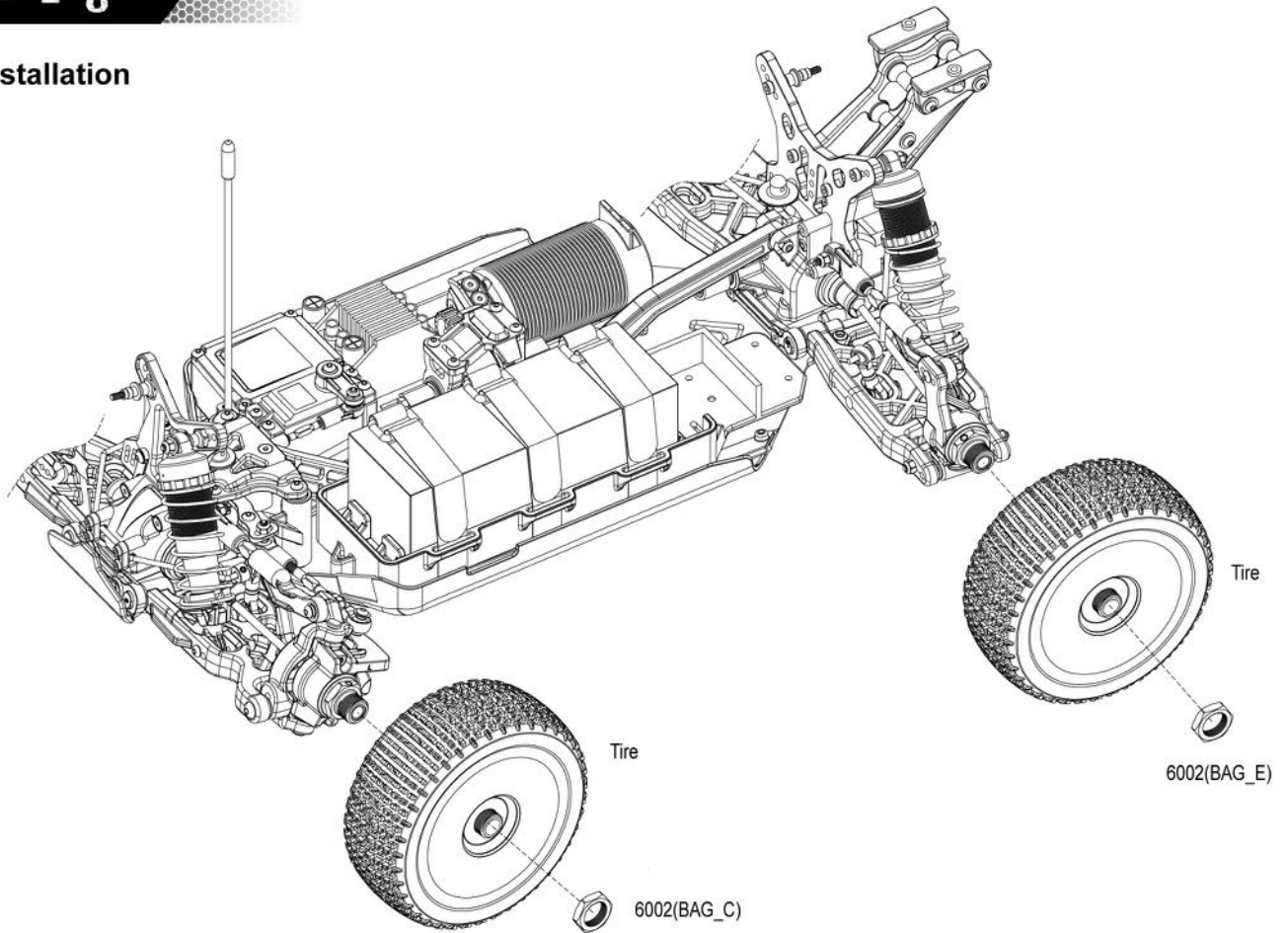
### Front / Rear Shocks Installation



# CHASSIS INSTALLAZIONE

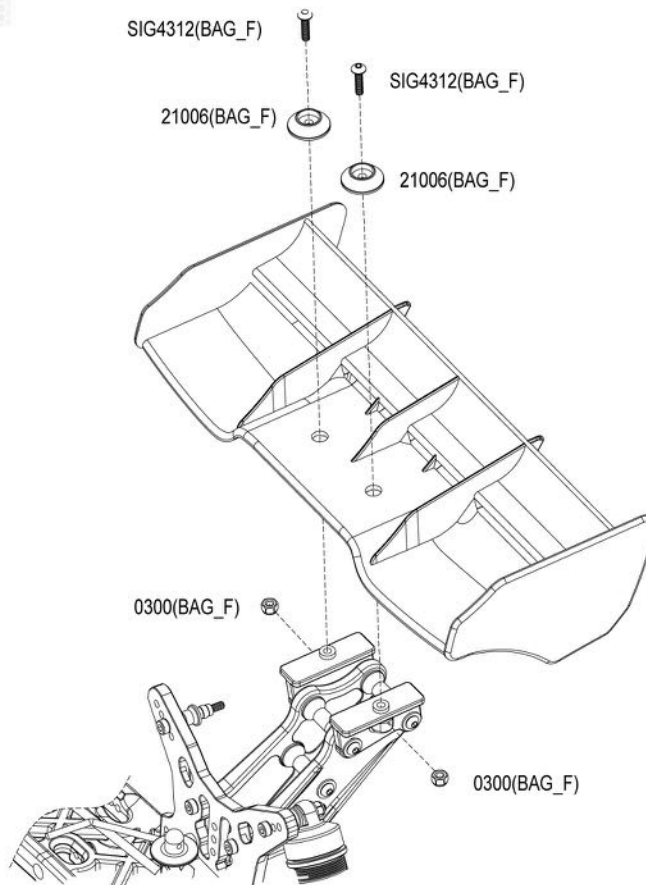
## STEP - 8

### Tire Installation



## STEP - 9

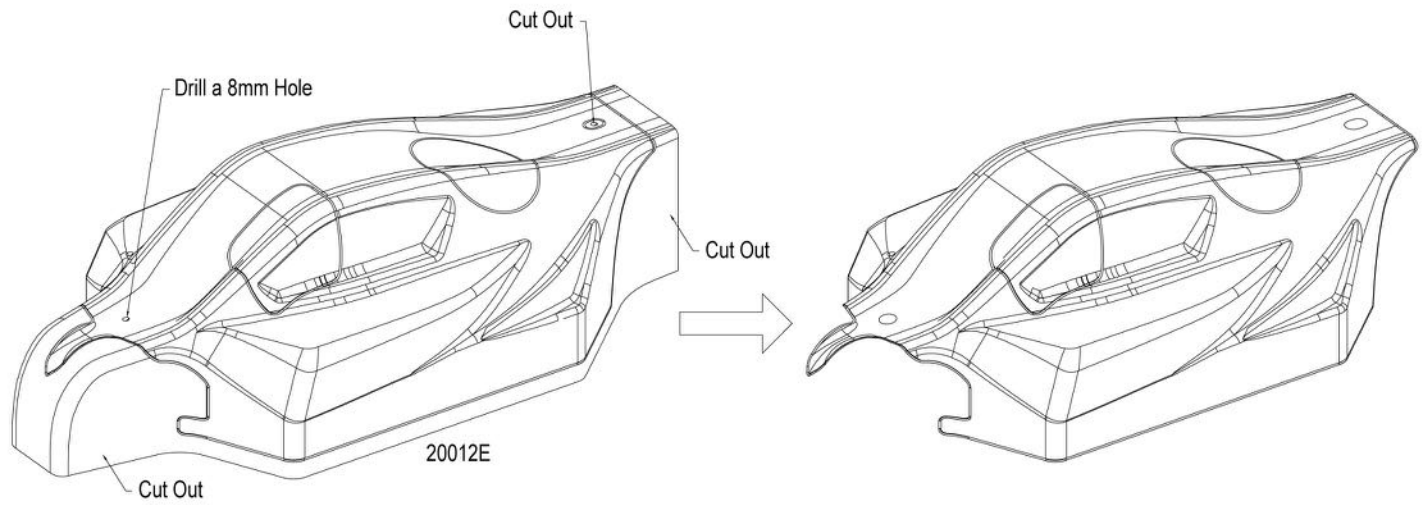
### Wing Installation



# CHASSIS INSTALL **AZISE**

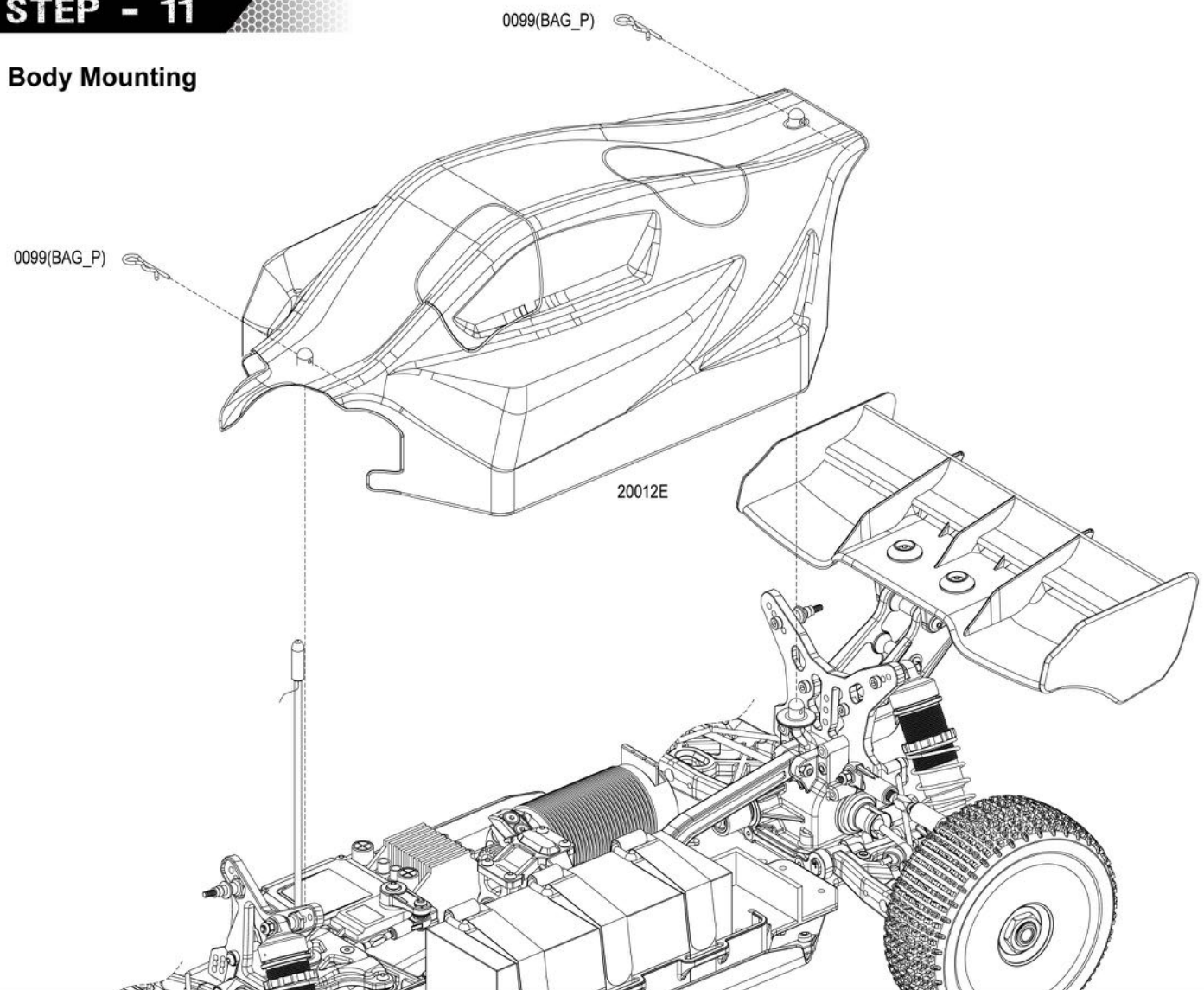
## STEP - 10

### Body Trimming



## STEP - 11

### Body Mounting



TRACK CONDITIONS  Indoor  Tight  Smooth  Hard Packed  Blue Groove

Wet  Low Bite  High Bite  Outdoor  Open  Rough  Loose/Loamy

Dry  Dusty  Med Bite  Other

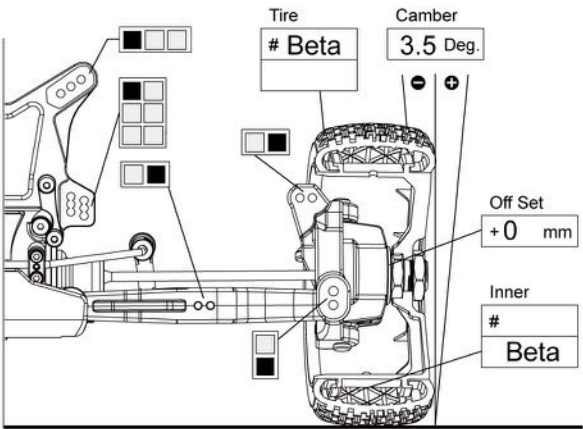
ESC \_\_\_\_\_ MOTOR \_\_\_\_\_ BATTERY \_\_\_\_\_ ; V \_\_\_\_\_ mAh

Pinion  16T  17T  18T  Other \_\_\_\_\_ T

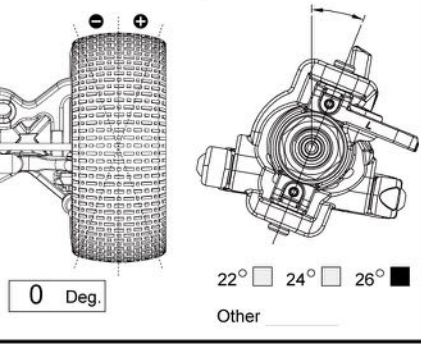
DIFF Front 10K Oil # \_\_\_\_\_ Center 3K Oil # \_\_\_\_\_ Rear 5K Oil # \_\_\_\_\_

43 T x 10 T Spur gear 45 T 40 T x 9 T

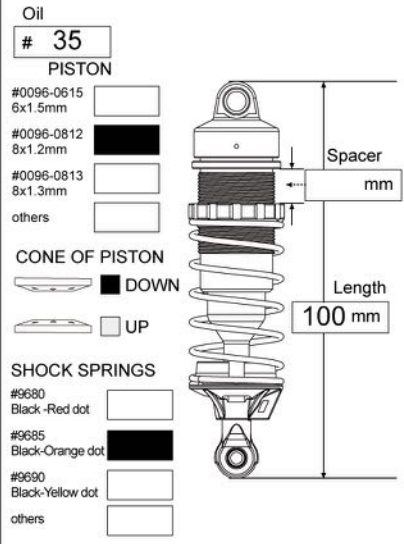
### FRONT SUSPENSION



### FRONT TOE ANGLE | CASTER ANGLE



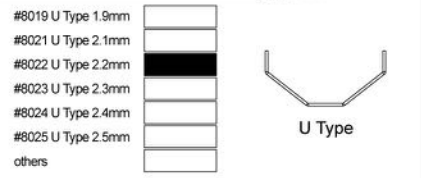
### FRONT SHOCK



### KICK UP

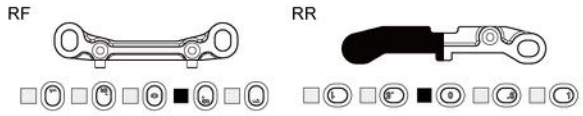


### ANTI ROLL BAR

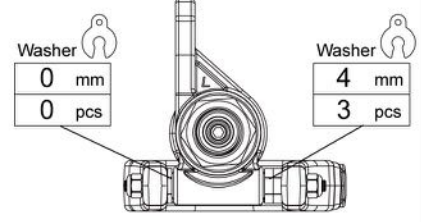


### ANTI SQUAT

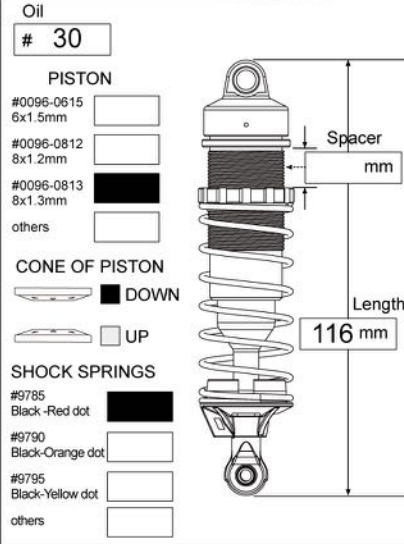
### TOE ANGLE



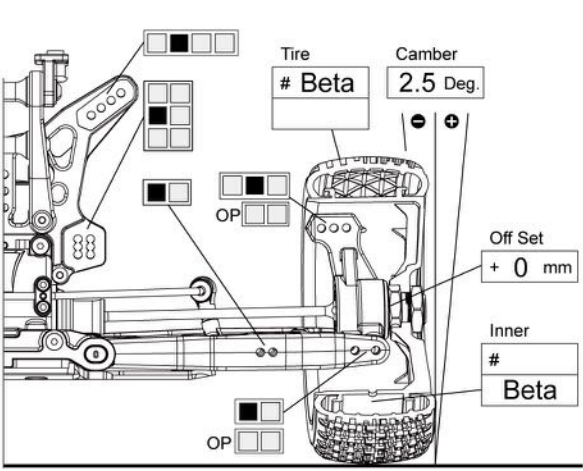
### WHEEL BASE



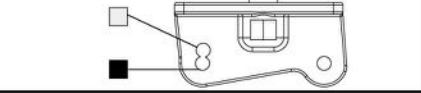
### REAR SHOCK



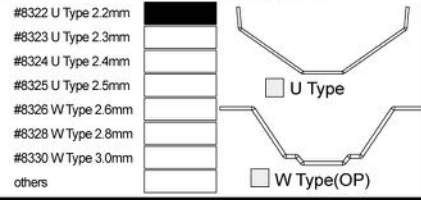
### REAR SUSPENSION



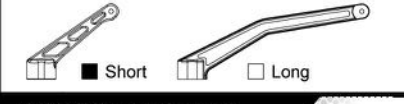
### WING POSITION



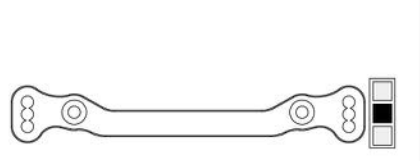
### ANTI ROLL BAR



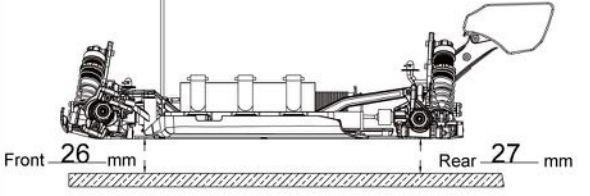
### REAR CHASSIS BRACE



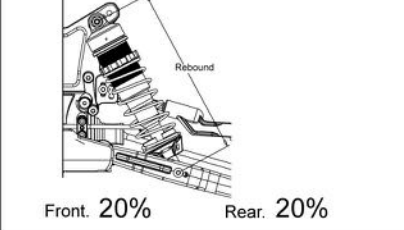
### ACKERMAN



### RIDE HEIGHT



### DROOP LIMITER



**TRACK CONDITIONS**     Indoor     Tight     Smooth     Hard Packed     Blue Groove

Wet     Low Bite     High Bite     Outdoor     Open     Rough     Loose/Loamy

Dry     Dusty     Wed Bite     Other

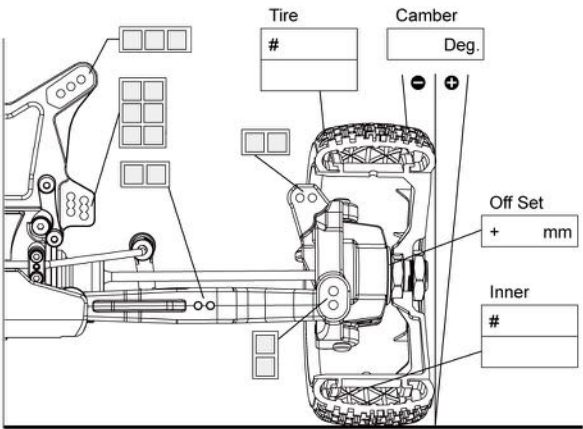
ESC \_\_\_\_\_ MOTOR \_\_\_\_\_ BATTERY \_\_\_\_\_ ; V \_\_\_\_\_ mAh

Pinion     16T     17T     18T     Other \_\_\_\_\_ T

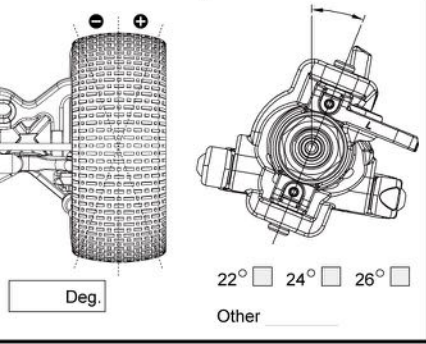
**DIFF**    **Front**    Oil # \_\_\_\_\_    **Center**    Oil # \_\_\_\_\_    **Rear**    Oil # \_\_\_\_\_

T x T    Spur gear T    T x T

**FRONT SUSPENSION**



**FRONT TOE ANGLE | CASTER ANGLE**



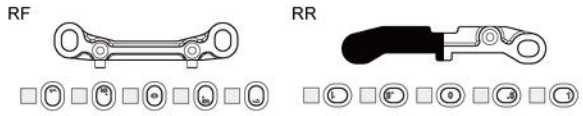
**ANTI ROLL BAR FRONT**

- #8019 U Type 1.9mm
  - #8021 U Type 2.1mm
  - #8022 U Type 2.2mm
  - #8023 U Type 2.3mm
  - #8024 U Type 2.4mm
  - #8025 U Type 2.5mm
  - others
- U Type

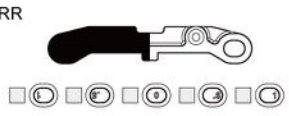
**KICK UP**



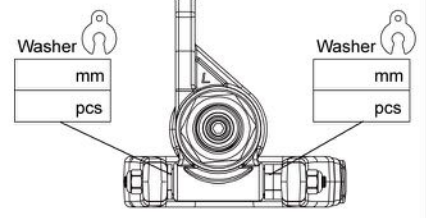
**ANTI SQUAT**



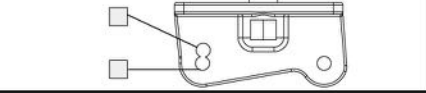
**TOE ANGLE**



**WHEEL BASE**



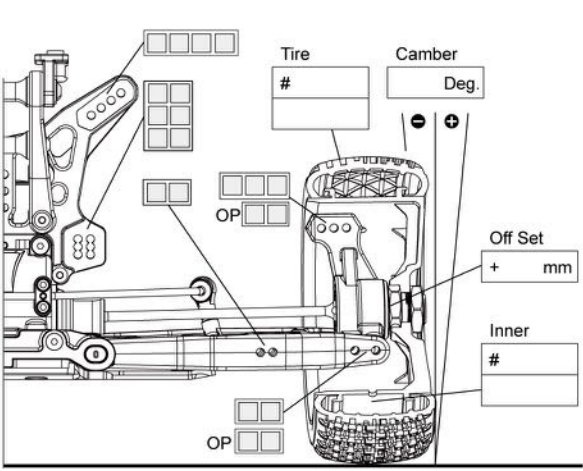
**WING POSITION**



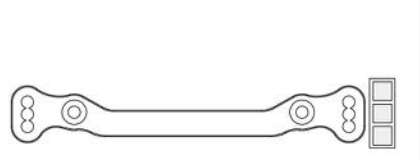
**ANTI ROLL BAR REAR**

- #8322 U Type 2.2mm
  - #8323 U Type 2.3mm
  - #8324 U Type 2.4mm
  - #8325 U Type 2.5mm
  - #8326 W Type 2.6mm
  - #8328 W Type 2.8mm
  - #8330 W Type 3.0mm
  - others
- U Type    W Type(OP)

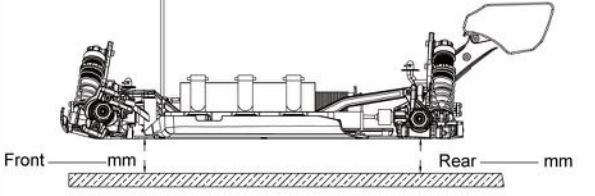
**REAR SUSPENSION**



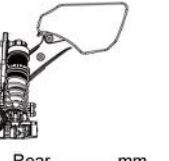
**ACKERMAN**



**RIDE HEIGHT**



**WING**



**FRONT SHOCK**

Oil # \_\_\_\_\_

**PISTON**

- #0096-0615 6x1.5mm
- #0096-0812 8x1.2mm
- #0096-0813 8x1.3mm
- others

**CONE OF PISTON**

DOWN  UP

**SHOCK SPRINGS**

- #9680 Black-Red dot
- #9685 Black-Orange dot
- #9690 Black-Yellow dot
- others

Spacer mm    Length mm

**REAR SHOCK**

Oil # \_\_\_\_\_

**PISTON**

- #0096-0615 6x1.5mm
- #0096-0812 8x1.2mm
- #0096-0813 8x1.3mm
- others

**CONE OF PISTON**

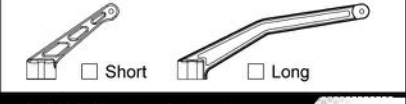
DOWN  UP

**SHOCK SPRINGS**

- #9785 Black-Red dot
- #9790 Black-Orange dot
- #9795 Black-Yellow dot
- others

Spacer mm    Length mm

**REAR CHASSIS BRACE**



**DROOP LIMITER**

