



MEDIFY AIR_x

A HIGHER STANDARD OF AIR PURIFICATION



MA-22 AIRPURIFIER

READ AND SAVE THESE INSTRUCTIONS
INSTRUCTION MANUAL AND WARRANTY INFORMATION
Lifetime warranty if replacing filters on time

MA-22/US
Rev: 10/12/21

IMPORTANT SAFETY INSTRUCTIONS:

IN ORDER TO AVOID ANY DAMAGE TO YOU, OTHERS OR PROPERTY, FOLLOW THE FOLLOWING SAFETY PRECAUTIONS:

IF THE POWER CORD OR UNIT DOES NOT WORK, CONTACT MEDIFY CUSTOMER SERVICE IMMEDIATELY.

READ ALL INSTRUCTIONS BEFORE USING.

WARNING — TO REDUCE THE RISK OF BURNS, FIRE, ELECTRICAL SHOCK, OR INJURY TO PERSONS:

- To reduce the risk of fire or electrical shock, DO NOT use this fan with any solid-state speed control device.
- This appliance has a polarized plug (one blade is wider than the other). To reduce the risk of electrical shock, this plug is intended to fit in a polarized outlet only one way. If the plug does not fit fully in the outlet, reverse the plug. If it still does not fit, contact a qualified electrician. Do not attempt to defeat this safety feature.
- DO NOT touch power plug with wet hands. Wet hands can cause an electrical shock to occur. Never touch with wet hands.
- Turn off the power before cleaning machine. Unplug before cleaning to avoid electrical shock or unit turning on accidentally.
- DO NOT take apart or modify unit without authorization. Taking apart or modifying it without authorization may cause personal injury or unit malfunction.
- DO NOT put bars or metal products nearby air outlet or openings. If metal bars touch inside of machine it can cause electrical shock.
- DO NOT damage power line and socket. Do not bind wires when you use the unit. It may cause electrical shock, short circuit, or fire if you use broken wires. Forbidden to cut, scratch, refit, distort, twist or pull power lines. DO NOT put any heavy products on top of wires or sockets.
- Regularly clean power plug. Do not allow dust to accumulate on power plug. This can damage insulation and cause a fire accident to happen. Pull out the power plug and clean with dry cloth (do not use a wet cloth). If you are not planning to be used this machine for any extended period of time, unplug it for safety reasons.
- Prohibited use beyond power. Can only use a 220v unit with a 220v power supply. Can only use a 110v unit with a 110v power supply. You can break or ruin the circuit boards if you plug a 110v plug into a 220v power supply.
- Please insert the plug completely into the power socket before starting the unit. If not, this may cause an electrical shock and overheating, or even a fire accident to occur. Do not use damaged plug or loose socket.
- Keep machine dry. Or else it may cause an electrical shock or a fire accident to happen.
- Keep machine away from volatile substances or flammable items. This could cause a fire.
- DO NOT use unit in greasy area. This machine should not be used as ventilating or air evacuating equipment.
- DO NOT use unit in high temperature or humid conditions. These situations may cause current damage, electrical shock, or even a fire accident to happen.
- DO NOT use the unit in the room with fumigation type pesticides. Chemical residue could be accumulated inside the machine and then released, causing harm. The room should keep ventilated thoroughly after you use insecticide and then start to use air purifier.
- If you use the unit in a room with an electric heater, ensure proper ventilation. Otherwise, there could be a buildup of carbon monoxide, which can cause serious harm or death. The air purifier will NOT remove carbon monoxide from the air.
- DO NOT use solvents like benzene, diluent, etc. to clean the air purifier. This can cause the unit to break, to become damaged, or short circuit, which can lead to an electrical shock or even a fire accidents to happen.
- Be careful when removing the plug from the power socket. DO NOT pull wires which may cause short circuit or damage to wires, to avoid possible fire accident or electrical shock.
- BEFORE USING THIS PRODUCT, PLEASE MAKE SURE TO REMOVE THE PLASTIC COVERING FROM ALL FILTERS.

SAVE THESE IMPORTANT INSTRUCTIONS FOR EASY REFERENCE.

UNIQUE FEATURES & SPECIFICATIONS

GENUINE MEDIFY TRUE HEPA H13 FILTRATION SYSTEM

- **TRUE HEPA H13 FILTRATION**

Removes up to 99.9% of airborne particles as small as 0.1 microns, such as allergens, pollen, dust, germs, pet dander, odor, mold spores, and smoke from air that passes through the filter.

- **CARBON ODOR FILTRATION**

Reduces household odors and VOCs (volatile organic compounds)/gases as shown by independent laboratory testing.

- **PRE-FILTER**

Captures large particles.

3 SPEEDS

Low, medium, and high speeds.

BUILT-IN TIMER

Choose from 1, 2, 4, or 8 hours.

REPLACE FILTER INDICATOR

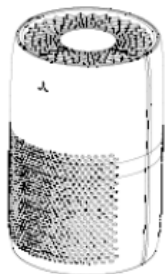
Illuminates when it is time to replace the filter.

TECHNICAL DATA

- Voltage: 120 V AC 60Hz
- Rated power: 38 W
- Noise level: 53 dB(A)
- Room size: up to 140 sq. ft.
- Unit dimensions: $\varnothing 8.07$ "H x 12.2"
- Unit weight: 5.2 lbs.
- EPA Est.87627-CHN-001

STANDARD COVERAGE

Up to 660 sf every 60 minutes, up to 330 sf every 30 minutes, 165 sq. ft every 15 minutes.



AIR PURIFIER



FILTER



BASE

FILTER PURIFICATION

1. PRE FILTER

Removes hair, fibers, and large particles like dander.

2. TRUE HEPA H13 FILTER

The high-efficiency H13 TRUE HEPA filter is tested to removed 99.9% of particles down to 0.1 microns. This higher grade of HEPA filter easily catches pollen, dust mites, and other tiny airborne particles you can't see.

3. ACTIVATED CARBON FILTER

Substantial carbon filter with carbon pellets removes toxic odors, smoke, and formaldehyde.

1. PREFILTER

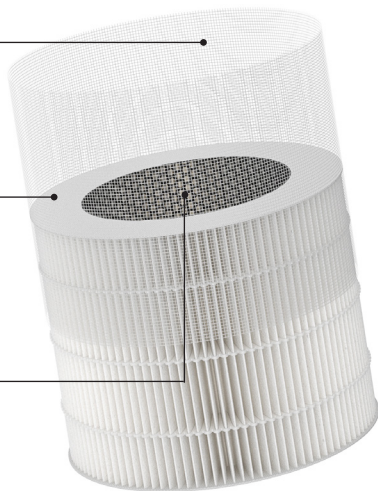
catches large particles like hair and dust

2. TRUE HEPA H13 FILTER

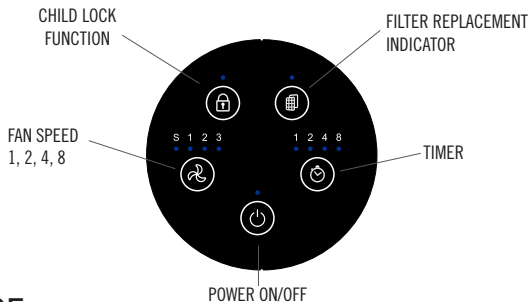
catches 99.9% of particles to 0.1 microns including pet dander and pollen

3. ACTIVATED CARBON FILTER

absorbs and eliminates odors



CONTROL PANEL



HOW TO USE

This air purifier is used to remove airborne contaminants from the indoor air in a particular area which could be potentially harmful to breathe.

PLACEMENT OF AIR PURIFIER

- Do not obstruct air intake or clean air outlet.
- To ensure sufficient air circulation, make sure there is a 20 inch or 50 cm distance between air inlet and wall or nearby furniture. This will ensure enough ventilation and high efficiency.

POWER ON/OFF

Press it to turn on/off the unit. POWER indicator will turn on, the unit will turn onto Speed 1.

CONTROL FAN SPEED

Press above button to select speed from the following options: S, 1, 2, 3. Speed 1 is slow speed. Speed 2 is medium speed. Speed 3 is fast speed. S is Sleep mode.

STANDBY MODE

Insert the plug of unit into a power source. Unit lights will turn on. After one second, air purifier is in standby mode.

TIMER

Timer, set to 1H, 2H, 4H, 8H.

CHILD LOCK FUNCTION

Child Lock function, press and hold for 3 seconds to activate it; to deactivated it, press and hold for 3 secs.

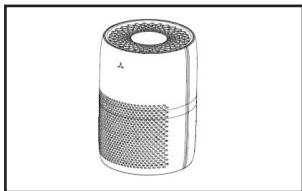
FILTER REPLACEMENT

LIGHT INDICATOR TO REPLACE THE FILTER

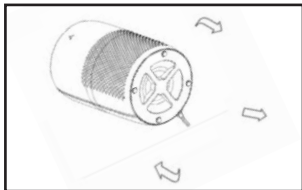
The light indicator will show when it is time to replace the True HEPA H13 filter based on the air purifier's hours of use.

INSTALLING FILTER SET

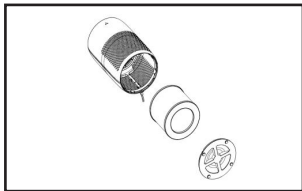
All filters must be used together. Please disassemble filters according to the following instructions. Reinstall the filters accordingly.



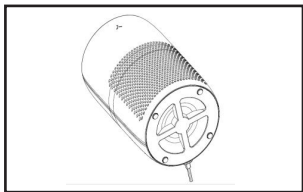
1. Place the machine in a dry location on a flat surface.



2. Rotate the base clockwise.



3. Pull the base downwards to reveal the filters.
Take out the filter to clean or replace with a new one.



4. Re-attach base at the bottom of the unit (with filters inside). Rotate counter-clockwise to secure base.

ATTENTION



Remove all plastic packaging from the filter before installing it.

DO NOT run the air purifier if there is no filter installed.

Please be careful when installing the back cover. Watch your hands.

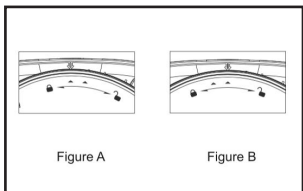


Figure A

Figure B

To remove the base, turn it clockwise as shown in Figure A. To secure the base, rotate it counter-clockwise as shown in Figure B.

CLEANING AND MAINTENANCE

Please make sure to pull out the power plug before cleaning the unit. Do not immerse machine in water or any other liquid. Do not use abrasive, corrosive or flammable products to clean any parts of the unit. The unit uses composite filters, so filters cannot be washed.

LONG TIME IDLING

Do not leave unit plugged in for an extended period of time when not in use. Place machine in a dry and well-ventilated place when not in use for extended period of time.

CLEANING THE AIR PURIFIER

Clean the air purifier regularly to prevent the dust accumulation.

1. Use soft and dry cloth to remove the dust from the air purifier.
2. Use soft and dry cloth to clean the outlet and inlet of the air purifier.

FILTER REPLACEMENT

LIGHT INDICATOR TO REPLACE THE FILTER

The unit will remind the user when the filter needs to be replaced. The filter indicator light will let you know when you have reached that time. Suggested frequency of replacing the filter set: 3-4 months.

Please turn off unit and pull out power plug before replacing the filters. Can use a brush or dust collector to remove surface level dust from the filters, but do not press hard on the filter material. The unit uses composite filters. These filters **CANNOT** be washed.

TROUBLESHOOTING

PROBLEM	POSSIBLE CAUSE	SOLUTION
Unit will not operate	Unit is not plugged in	Pull out plug and plug it back in
	Incorrect power plug or wire	Contact customer service
Fan does not work	Machine doesn't turn on	Plug in and turn on
	Motor is not working	Contact customer service
	Machine is on uneven ground	Move to even and flat ground
	Loose or foreign particles inside	Contact customer service
	Filter packaging is not removed	Remove packaging of every filter
	Motor is loose	Contact customer service
Performance issues	The filter needs to be replaced	Replace the filter with genuine Medify Air replacement filters for the best performance
	Air intake or outlet blocked	Contact customer service
	Filter plastic not removed	Remove packaging and then use
	Not enough space surrounding the air purifier	Ensure 20 in distance between two sides of air intake and that distance to air outlet is not less than 10 cm
	Lack of filter or filter is not properly installed	Make sure all the filters are placed in order in accordance with instructions
	Coverage area questions	Check whether the room area is in accordance with coverage area

WARRANTY INFORMATION

If you have any additional questions, please contact customer service. All names and trademarks are property of Medify Air. Our company reserves the right to change the product at any time, without prior notice, and the company has no obligation to adjust any products supplied earlier. Please refer to the detailed warranty terms below. To register for the lifetime warranty, please fill out the attached form and mail it to:

Medify Air
1325 SW 30th, Avenue
Deerfield Beach, FL 33442

Or complete the lifetime warranty registration available on our website (preferred method):

www.medifyair.com

LIFETIME WARRANTY

Medify guarantees your Medify Air Purifier to be free of defects in material or workmanship for a lifetime period, provided you have completed and returned your warranty registration to Medify Air within the first 30 days of purchase, and that the filters are replaced with original and genuine Medify Air replacement filters at least once every three to four (3-4) months or after 2,500 hours of use. Within the first 30 days, Medify Air will replace the defective unit at no charge to you and reimburse you for any shipping charges. After 30 days, Medify Air's obligation and liability under this Lifetime Warranty is dependent on your use of our genuine filters, purchased on our website or from our authorized resellers, which can be found on our website. Prohibited use beyond power. Can only use a 220v unit with a 220v power supply. Can only use a 110v unit with a 110v power supply. You can break or ruin the circuit boards if you plug a 110v plug into a 220v power supply.

Our Lifetime Warranty remains in effect as long as:

1. You submit your warranty registration to Medify Air within 30 days of purchase.
2. You change filters with genuine and original Medify Air replacement filters at least once every three to four (3-4) months or after 2,500 hours of use (whichever comes first).
3. You use a proper power supply based on voltage: 110-120 V (North America & Japan) or 220-240 V (all other regions).
4. There is no evidence of tampering, mishandling, neglect, accidental damage, modification, and/or repair done to the Medify Air purifier by anyone other than authorized Medify Air service personnel.
5. Your air purifier is operated in accordance with the provided instructions.

This Lifetime Warranty is provided by:

Medify Air
1325 SW 30th, Avenue
Deerfield Beach, FL 33442

www.medifyair.com
info@medifyair.com
(888) 258-1008

Please visit our website for
details on efficacy test data:
medifyair.com/pages/reports