

2019-CURRENT GMC 1500 OCTANE PROLITE INSTALLATION INSTRUCTIONS

Please fully read all instructions before starting the installation process on your vehicle. Installation of your new bumper should take around 2hours. **If you are unsure of installation procedure, please do not start installation and use a qualified shop for the installation.**

The Octane Prolite Bumper for the 2020+ GMC **Requires two minor cuts of the stock front bumper**, please refer to our diagrams below for cut placement.

Please follow the following steps to complete the installation of your new bumper-

1. Chock Vehicle Wheels and disconnect vehicle batteries.
2. Set your new bumper on a soft surface to begin working on installing the winch/light (Towel or Cardboard).
3. Mount your winch into the new Octane Series Bumper center section. The winch will bolt to the bumper using the 4 mounting holes located on the bottom of the bumper. The Control box will need to be relocated next to the winch, or under the hood of the vehicle. This is to clear the light bar area.
4. Install the winch fairlead to the front of the center section of the new bumper
5. The center section of the bumper will house a 30" Curved dual row light bar. Please use the included Small Black powder coated light bar brackets to mount your light bar. Modification to these brackets may be necessary if you're using an "off brand" Light bar.
6. After the lights and winch have been installed, the bumper is ready to be installed on the truck
7. Open the vehicle hood, Remove the top plastic radiator shield that is covering the top side of the vehicle grill
8. Remove grill from vehicle
9. Remove 2 inner fender liner bolts per side, that secure fender liner to bumper (close to fender flare)
10. Pull back the fender flare, remove bolt that's holding plastic valance underneath headlight, in order to remove the headlight trim piece, it's held on with clips- carefully pull back on the part to remove.
11. Unplug all wiring connectors leading into the bumper (parking sensors and lights harnesses)
12. Remove lower bumper support brackets, 1 per side
13. Loosen and remove 2 per side factory bumper mounting bolts
14. Bumper should slide off frame straight out towards front of vehicle. Be sure to check for any remaining hardware or as your pulling off the bumper from the vehicle.
15. With the bumper on a soft surface, facedown start removing all 8mm screws holding the black plastic center section & valance on, this is where the new prolite bumper will be placed. The entire Center section should be removed completely. The center section and lower valance should be separated from the main bumper at this point
16. With the plastic valance removed from the steel bumper, make 2 small cuts (See images for cut locations) Separating the center from the valance wings
17. Reinstall outer valance wings, back onto OEM bumper
18. Reinstall factory OEM bumper with removed center, and vehicle grill in the order they were removed.

19. After installation of the factory bumper, you can now install the Octane prolite to the frame
20. Slide the supplied square frame blocks into the center of the frame and use the OEM bumper bolt to hold the block into place.
21. Slide the bumper assembly into the factory bumper location, and onto the vehicles frame.
22. Tighten Bumper Mounting Bolts-
23. You may make slight adjustments by loosening the prolite bumper brackets and adjusting each side
24. Wire Lights and any accessories installed into bumper to your vehicle.
25. Reconnect vehicle battery, test all features including lights and winch if equipped

Your installation is now complete. Please enjoy your Chassis Unlimited Inc. bumper!

Please Remember to send us installed photos to Sales@chassisunlimited.com or use the Hash Tags

@chassis_unlimited on social media

#Chassisunlimited #Octanebumpers #Attitudebumpers #Thoraxrack

IF YOU HAVE ANY QUESTIONS
REGUARDING INSTALL OR INSTALLTION ISSUES

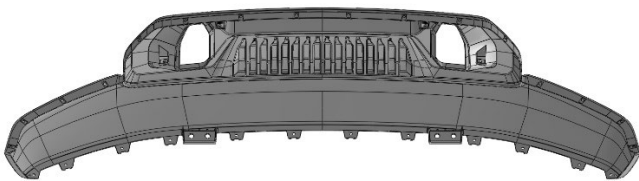
PLEASE CALL US 888-552-5371 OPTION 2
MONDAY-FRIDAY 8AM-4PM PST



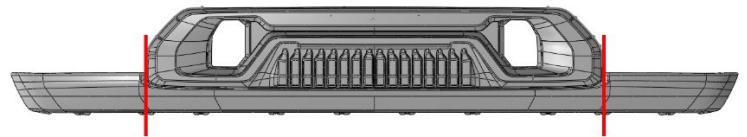
CUT LOCATIONS FOR 2019+ GMC 1500 PROLITE BUMPER

TOOLS RECOMMENDED FOR CUTTING FACTORY BUMPER= ANGLE GRINDER WITH CUT OFF WHEEL, RAZOR KNIFE, SAWZALL.

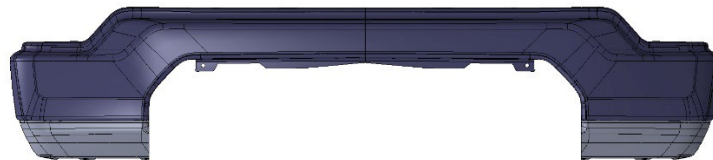
ALWAYS WEAR SAFETY GLASSES WHEN USING CUTTING TOOLS



PLASTIC VALENCE REMOVED FROM BUMPER



CUT PLASTIC VALENCE AT RED LINES



PLASTIC TRIMMED AND READY FOR INSTALL