

# LARK & BERRY

## LONDON

### ENGAGEMENT RING GUIDE



## THE LARK & BERRY ENGAGEMENT



With Lark & Berry, you can choose any of our engagement ring designs, make adjustments to these or create your own.

If you are unsure of what to choose, you can let us know your budget or desired stone size and we will make a recommendation. We will also show you a 3D image of your ring before we start making it to make sure it's 100% what you want.

For bespoke pieces you can also sit with one of our experts for a free consultation.

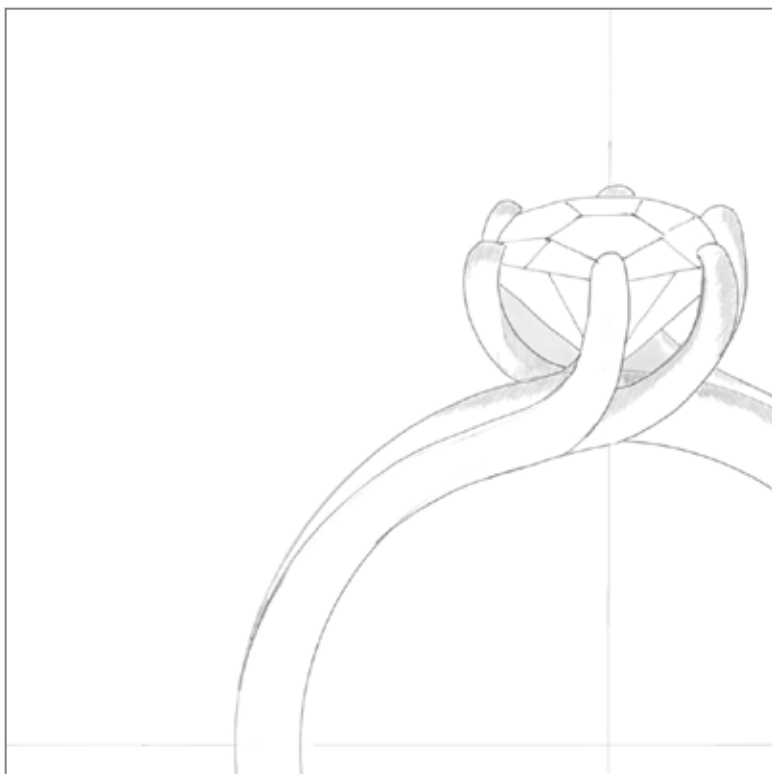
Ring delivery generally takes 2-4 weeks but can be rushed depending on design availability.

For full details on the bespoke process please scroll to the bottom of the page.



# A MEMORY FOREVER

When you pick up or we deliver your ring, if you wish to do so, we will include the story of its creation.

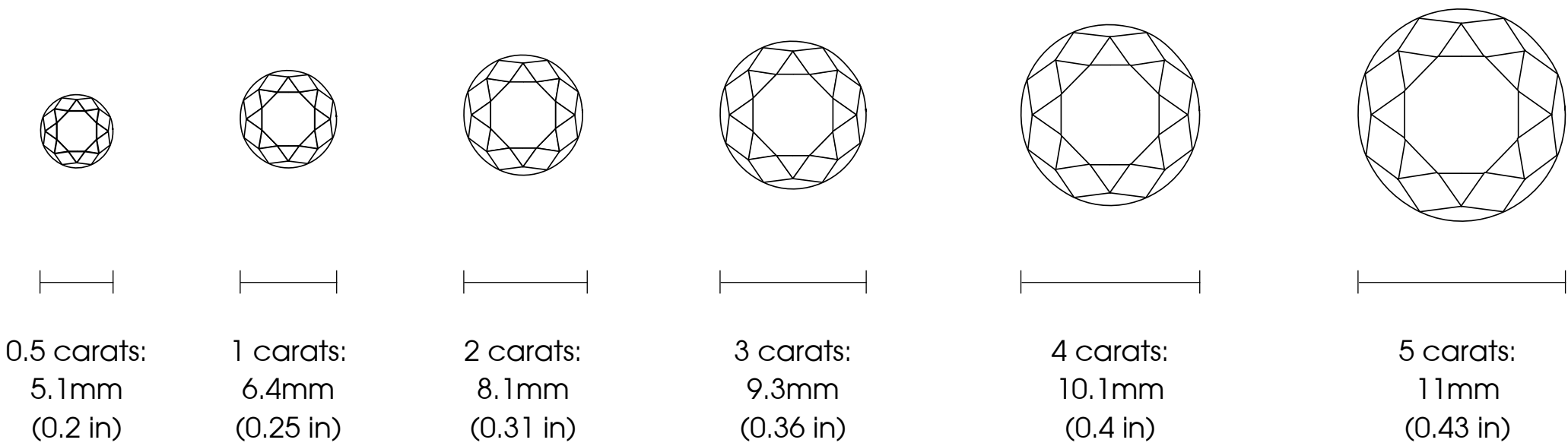


## LARK & BERRY DIAMONDS THE 5 C'S



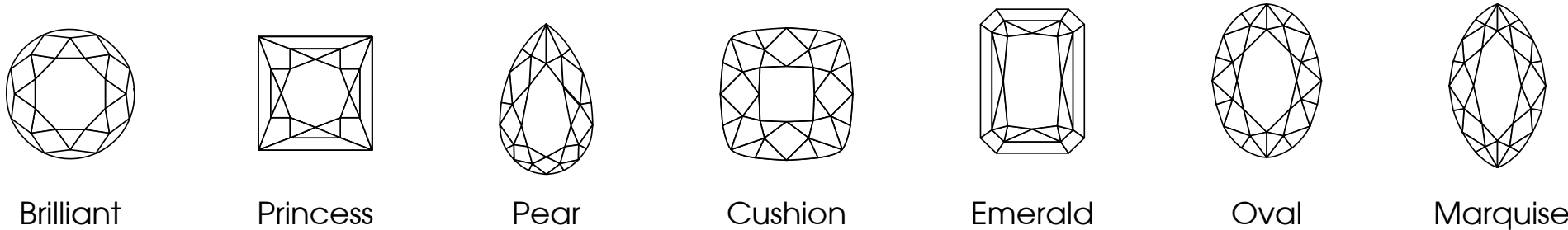
### 1 CARAT - THE WEIGHT

We have 0.5ct diamonds up to 5ct diamonds.  
Below are approximate diameters for each carat weight.



### 2 CUT - THE SHAPE

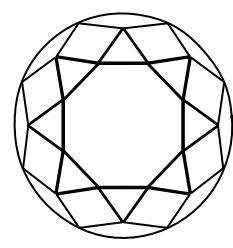
We offer all shapes of diamonds, including special cuts. Brilliant (round) is typically the most common cut for engagement rings.



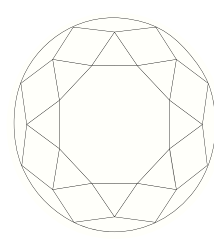
### 3 COLOUR - COLOURLESS TO BROWN

Most of our colours are in the top 4 letters. D, E, F, or G. This means the diamonds are basically colourless.

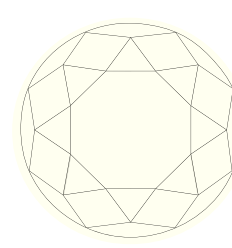
(The colours below are only to give you a general idea. Come visit us if you'd like to see stones in person)



DEFG



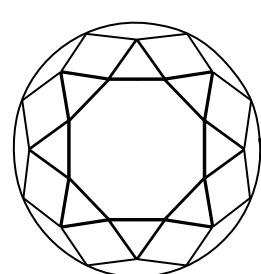
HIJK



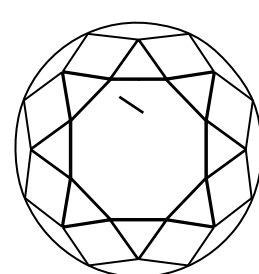
LMNO

### 4 CLARITY - INCLUSIONS/DARK SPOTS

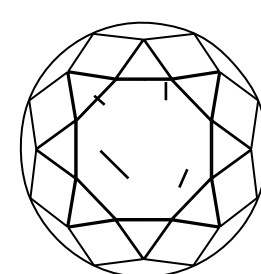
Most of our diamonds are VS or better, this means any tiny inclusion they might have cannot be seen with the naked eye, you'd need a magnifying 10x loupe.



VS- Very Slightly Included



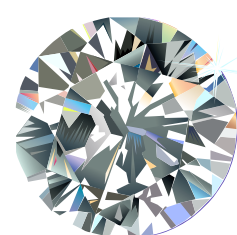
SI- Slightly Included



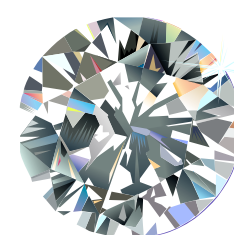
I- Included

### 5 CULTURED - GROWN OR MINED

We are proud to say all our diamonds are cultured- grown in a lab.



Mined



Cultured

**REAL:** Mined Diamond and Cultured Diamonds are chemically, optically and physically the same.

**SHINE:** Both shine the same, are just as hard and will last just as long.

**EXPERTS:** Gemologists cannot tell them apart because they're both diamonds.

**COST:** Cultured Diamonds don't just cost the Earth much less, they can also cost you less. They're also guaranteed conflict-free.

---

**A CULTURED DIAMOND CAN BE GROWN WITH 100% RENEWABLE ENERGY.**

99% Less Carbon Emissions Produced

99% Less Mineral Wastage

85% Less Water Used

53% Less Energy Consumed

100% Conflict-Free

100% Diamond

Figures quoted per carat weight. Sources: "Environmental Impact Analysis - Production of Rough Diamond Environmental Impact Assessment" Frost & Sullivan; Molecular and Cell Biology Postdoc, UC Berkeley, Contributor to Forbes & HuffPost; NextGreenCar.com



THE PUREST  
DIAMONDS.

THE PUREST  
LOVE.

## RING METALS

All Rings can be made in 18K Gold or Platinum and all of our rings are nickel-free.

**18K Gold:** 18K gold rings can be made in Yellow Gold, Rose Gold or White Gold. White gold is generally brightened by adding a plating of white rhodium. This plating on any ring can wear over time so we offer re-plating service as part of our aftercare service.



**Platinum:** Platinum is the most common choice when it comes to engagement rings as it is the hardest metal, and its white colour will not fade, even with time.



## LOOKBOOK



For exact availability of diamonds please contact us.

However, if you'd like to place an order we will match the diamond to the exact colour, clarity and carat or slightly higher size and quality depending on available stones at the time.

If requested, we offer certificates for stones 0.5 carats and larger. We also offer rings in coloured sapphires. Rings start at £1950.





ROWAN



PLUM



PINE



WILD CHERRY



SPINDLE



CHESTNUT



WILLOW



ASH





WALNUT DIAMONDS



WALNUT



BLACKTHORN DIAMONDS



BLACKTHORN



HOLLY HALO



HOLLY



DIAMOND LIME



LIME





MAPLE DIAMONDS



MAPLE



HAWTHORN DIAMONDS



HAWTHORN



ASPEN DIAMONDS



ASPEN



ELDER



ELM





SAPPHIRE ELM



PURPLE SAPPHIRE ELM



SAPPHIRE PINE



EMERALD PINE



SAPPHIRE PLUM



RUBY PLUM

**ALL RINGS CAN BE MADE WITH ANY COLOUR SAPPHIRE**



ETERNITY BANDS





CHERRY



OAK



FIR



BIRCH



LARCH



EUCALIPTUS



GUILDER ROSE



CEDAR





APPLE



WHITEBEAM



HORNBEAM



SPRUCE



CHERRY



OAK



FIR



BIRCH





LARCH



EUCALIPTUS



GUILDER ROSE



CEDAR



APPLE



WHITEBEAM



HORNBEAM



SPRUCE



# BESPOKE

HAVE AN IDEA IN MIND?

READ BELOW FOR FULL  
DETAILS ON THE PROCESS.



## INITIAL BRIEF

We normally start with a brief meeting (this can be done remotely if you are not London based) to discuss what you're looking for. We can also show you a range of stones we have available so that you can see the quality of our stones.

## QUOTE

Once we have a basic idea of your needs we send you a rough quote, which is subject to change if stone or design changes dramatically. We generally have a £2,500 minimum for the bespoke service, however we are flexible depending on your needs / budget.

## DEPOSIT

Once design deposit is paid (£750), we can begin designing your ring and you can choose your diamond. In order to hold diamonds bigger than 1 carat, you will need to pay a deposit for half the price of the diamond chosen. We can send you images / videos and copies of certificates of available diamonds prior to this.

## DESIGN

We want your design to be exactly as you want it so we will submit 3 initial designs in 2D with your specifications. You can then make your desired changes up to 3 times (each time we will send you 3 different options). Once you make your final decision, we will make your ring in 3D so you can see exactly how it will look and confirm the design.

## CREATION

Once design is approved, we will re-confirm the price and you will need to pay 50% of the final price of the ring. Any deposits you have already made will go towards this. When we receive payment, we can begin making your ring and you can expect to have it with you in 2-4 weeks (we can rush orders if necessary.)

## COLLECTION

When your ring is ready we will let you know so you can pay the final 50%. We can then deliver the ring directly to you (insured of course) or you can come pick it up at our Marylebone store.



## CONTACT US

**FlagshipAddress:**

52a George St. London, W1U 7EA, UK.

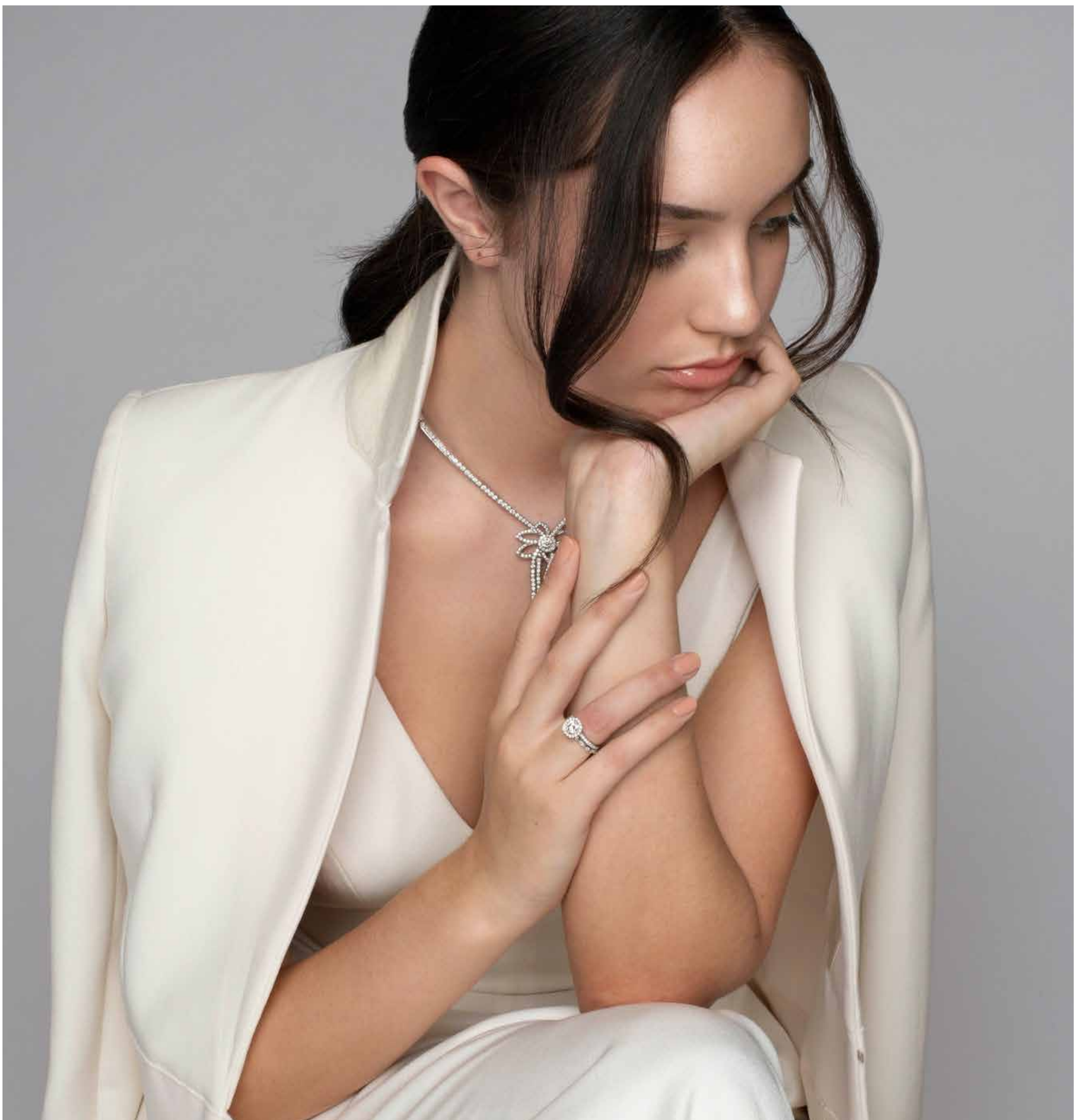
**Hong Kong Address:**

6/F, 100 Queen's Rd. Hong Kong.

**E-mail:**

hello@larkandberry.com

**[www.larkandberry.com](http://www.larkandberry.com)**



**LARK & BERRY**