



CREATE ROOM.

# oh happy day

## YOU'VE RECEIVED THE DREAMBOX 2 SIDE TABLES!

Double or Triple the table space. Let's get this party started.

Follow simple instructions to install side table guides that will allow you to slide your Side Tables in and out with ease. All necessary hardware is included.

If you have questions at any point of the assembly process, our friendly furniture experts will be happy to help you.



**CUSTOMERSERVICE@CREATEROOM.COM**



**WWW.CREATEROOM.COM**



**USA / CANADA: 801-226-2686 (M-F 9AM-5PM MST)**  
**UK/EU: +49 40 69632955 OR +44 7759 335868**

We are excited for you to enjoy your inspiring new workspace and can't wait to see pictures! Share your photos on Facebook and Instagram and don't forget to tag @createroomco.

Happy crafting!

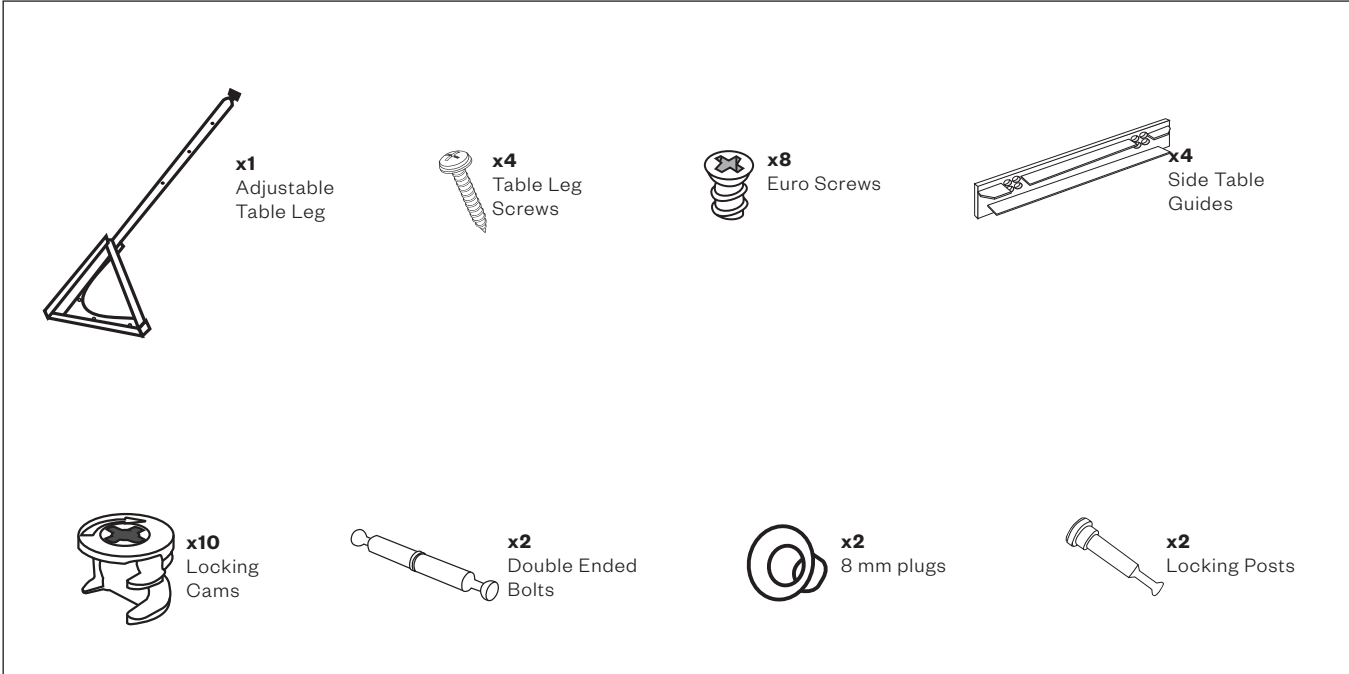
*DreamBox 2 Side Table Assembly Instructions*

*(Proprietary patented product and instructions. Do not copy or distribute.)*

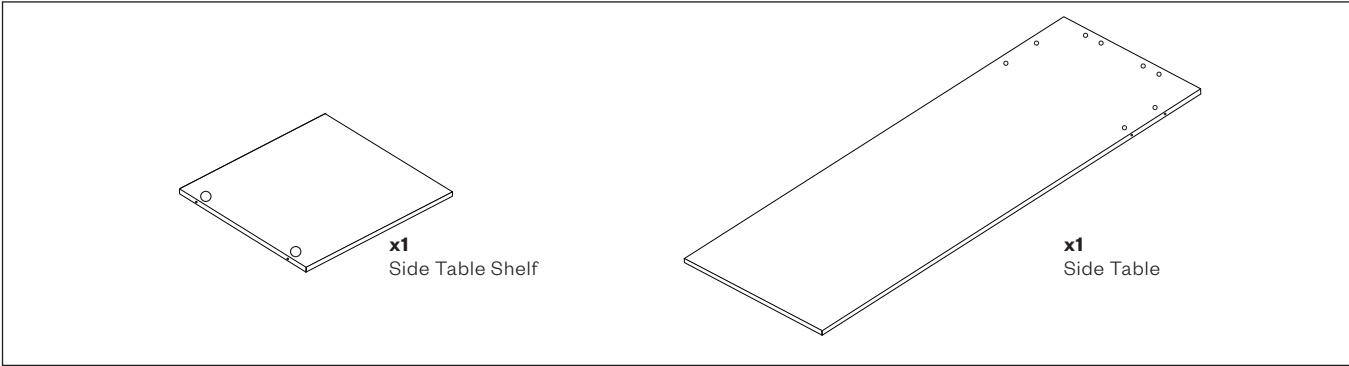
U0424

# side table

## HARDWARE YOU'LL NEED:



## PIECES YOU'LL NEED:



## TOOLS YOU'LL NEED:

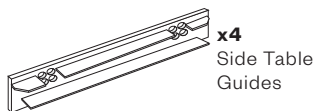
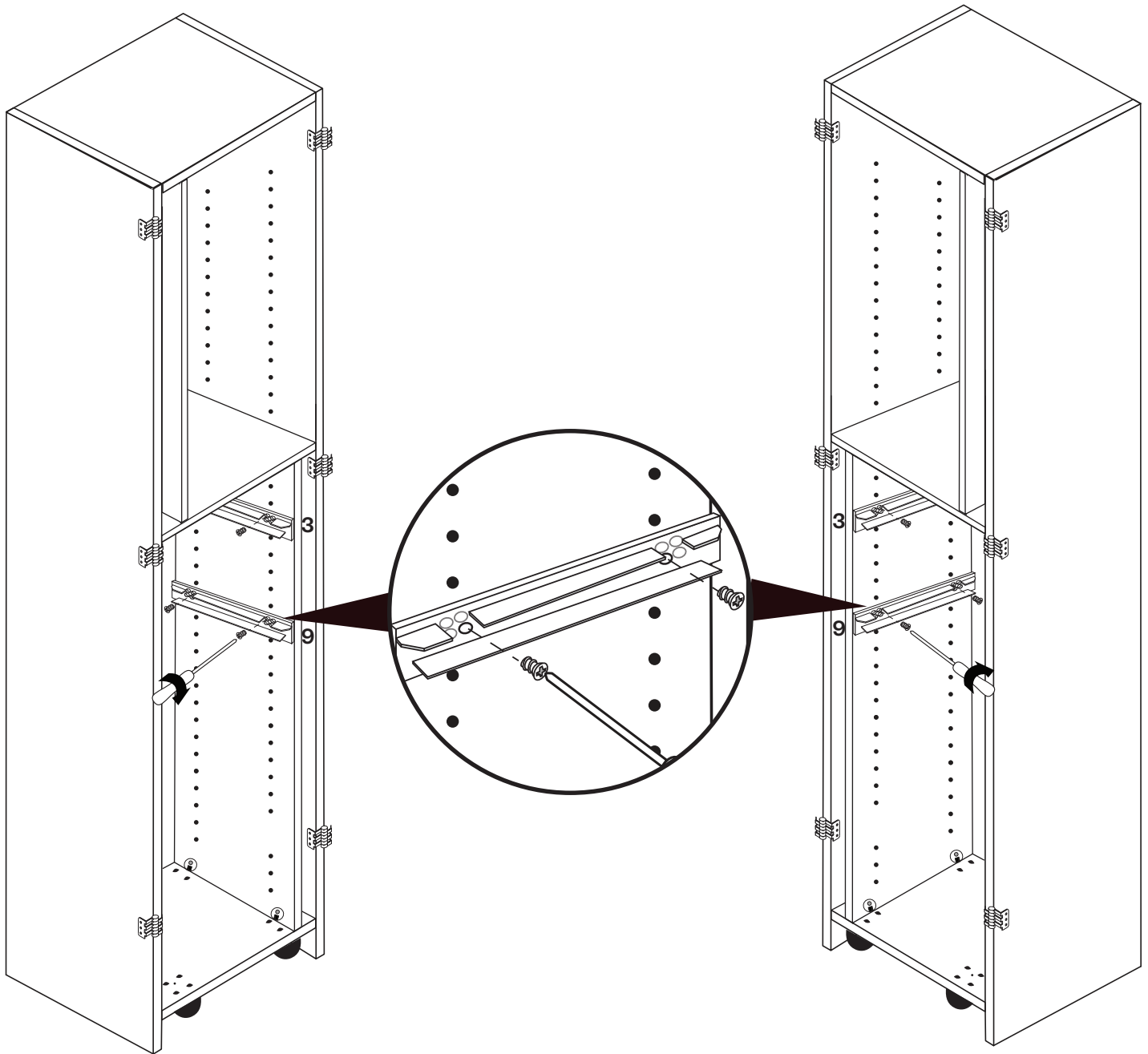


1

Add **2 table guides** to the **left or right side box** on hole #9 from the top hole with **4 Euro Screws**.

Right Side Configuration:

Left Side Configuration:

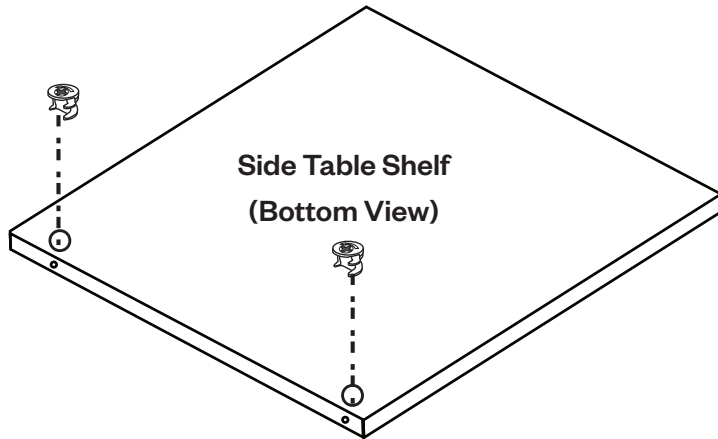


**TIPS:**

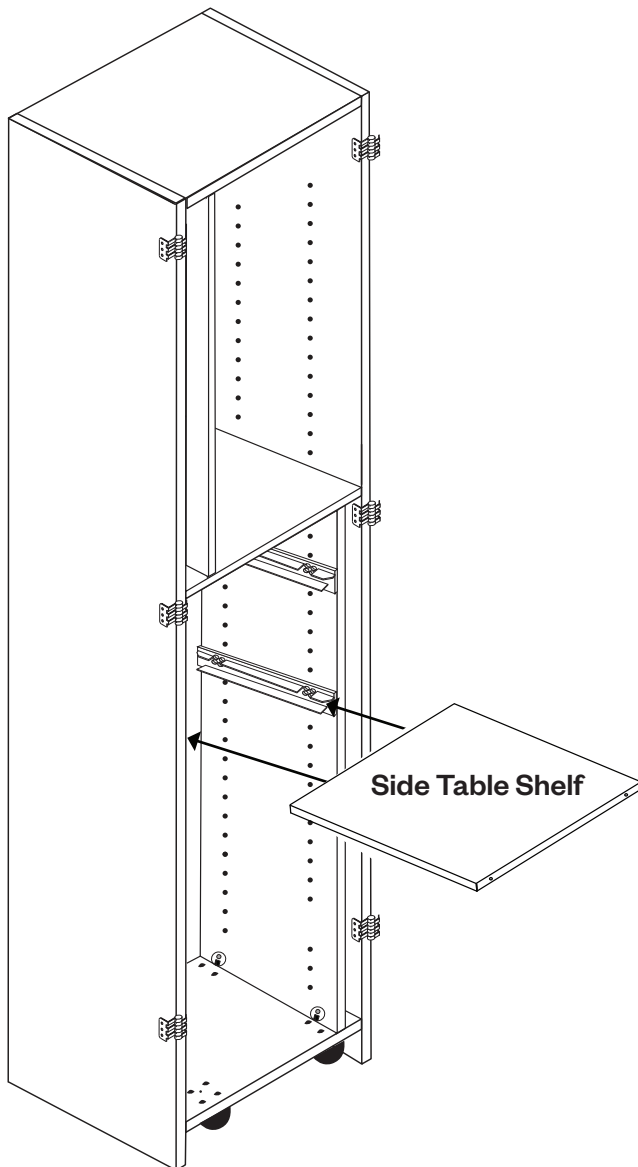
1. Use manual screwdriver to not damage plastic guide.
2. Standing height guides included: install on hole 3.

**2**

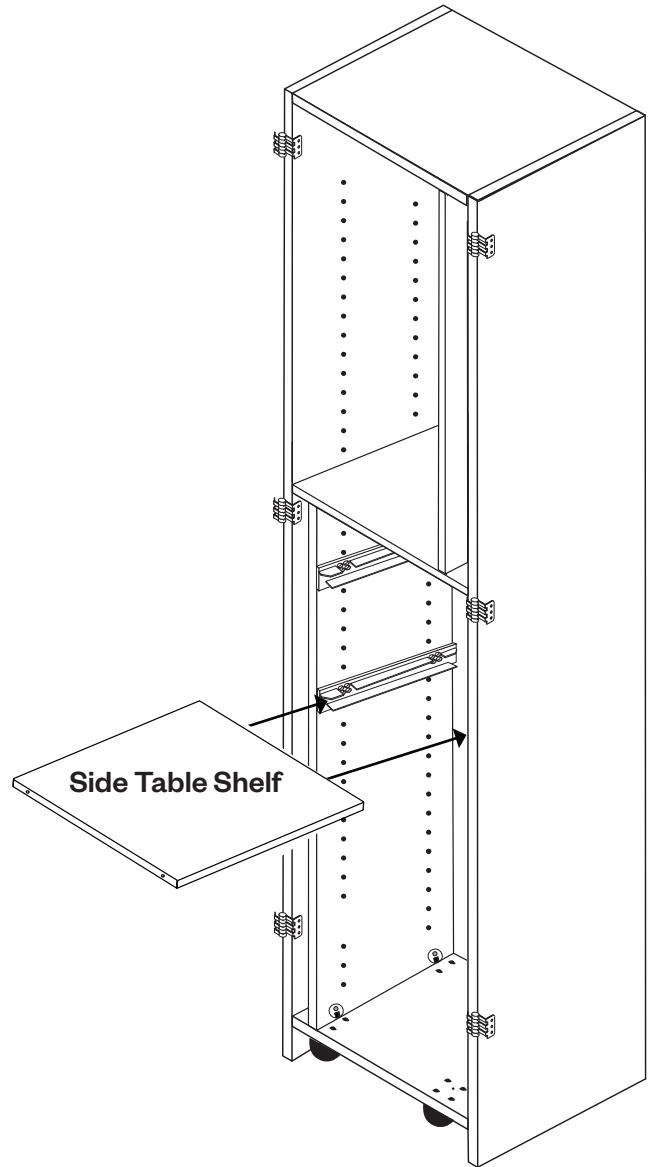
Add **2 cams** to the **Side Table Shelf**. Slide into the **two table guides** with cams down.



**Right Side Configuration:**

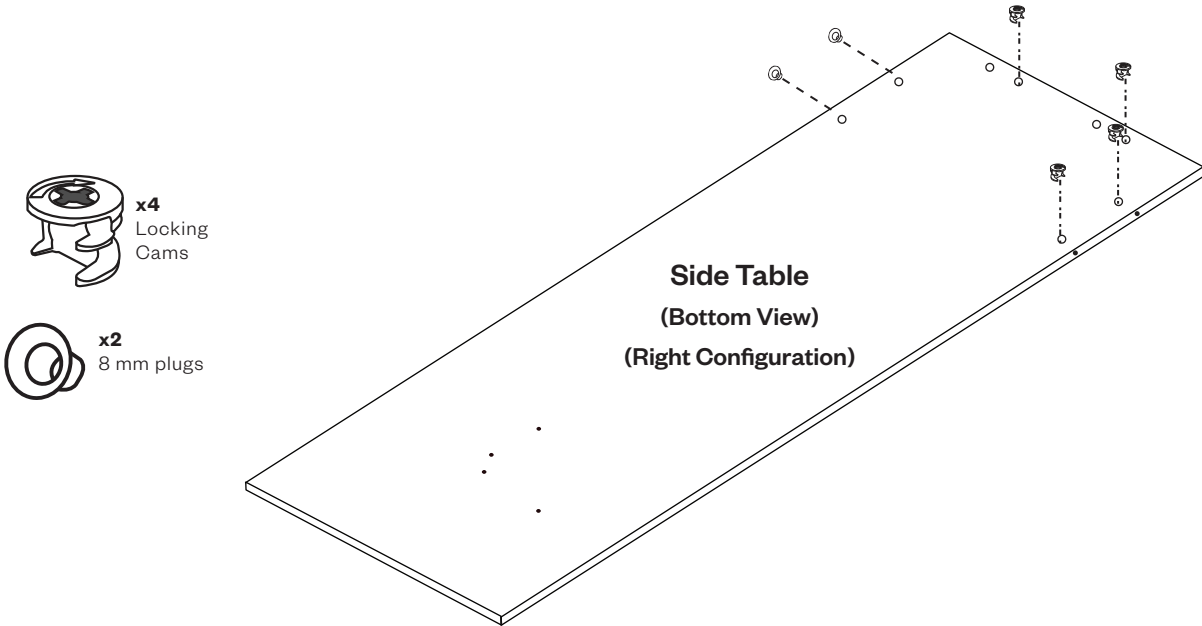
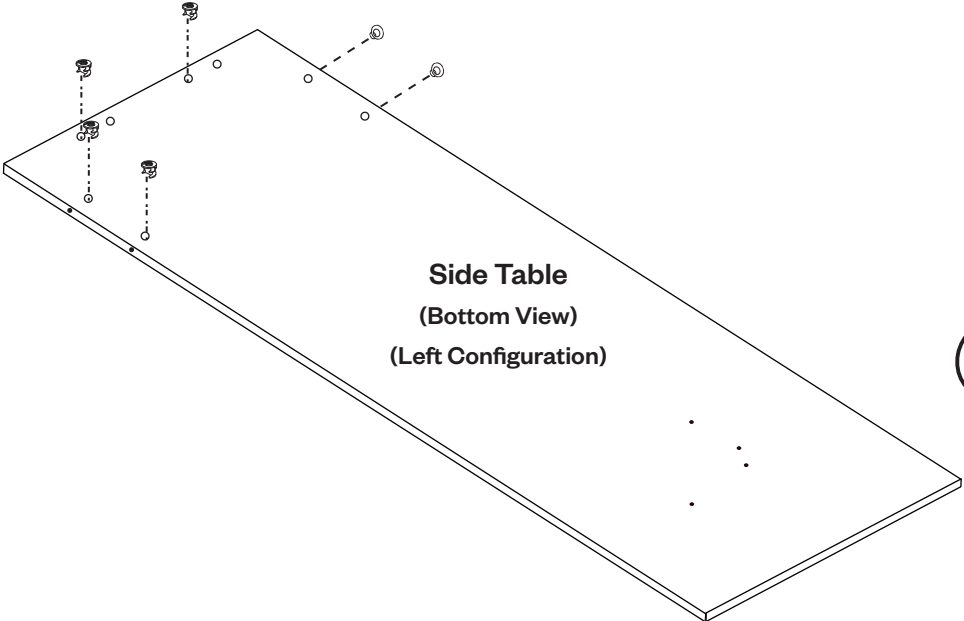


**Left Side Configuration:**



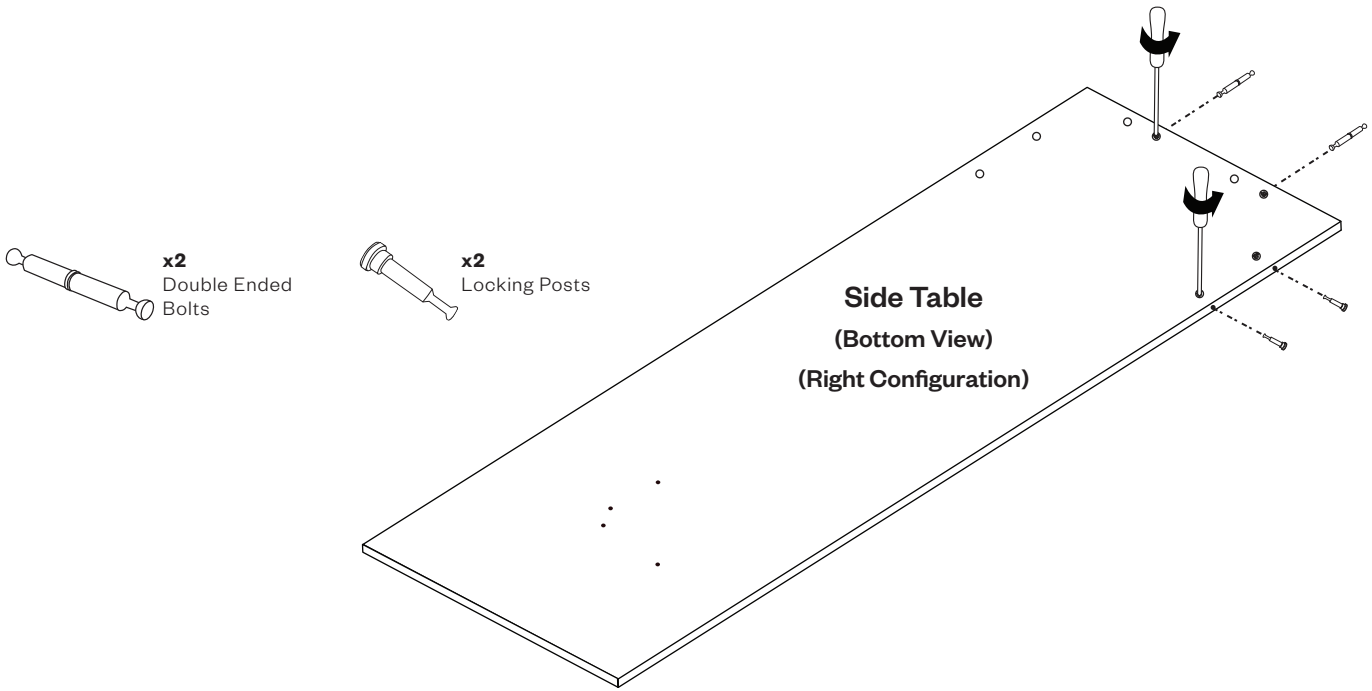
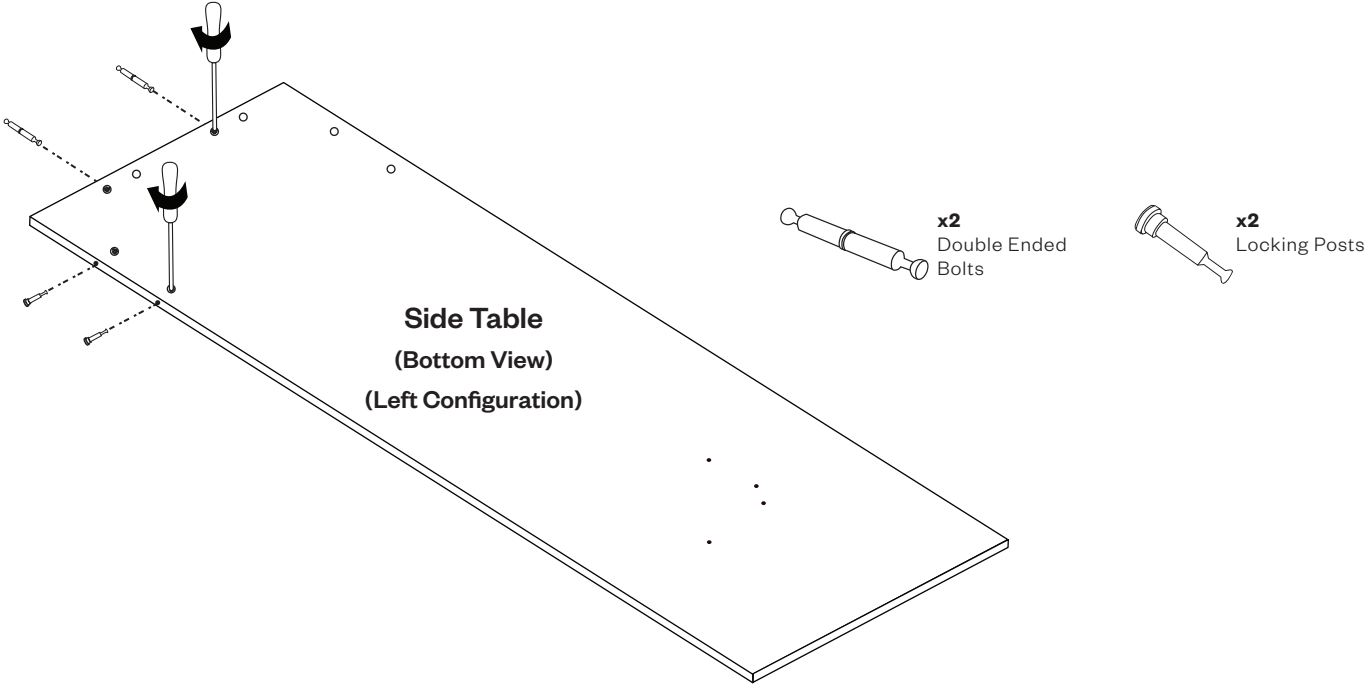
**3**

Add **4 cams** to **side table**. Insert **8mm plug holes** to the side that will not be connected to the table.



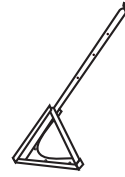
**4**

Add **2 double ended bolts** to the end of the **side table**, and **2 locking posts** to the side. Tighten **4 cams**.



**5**

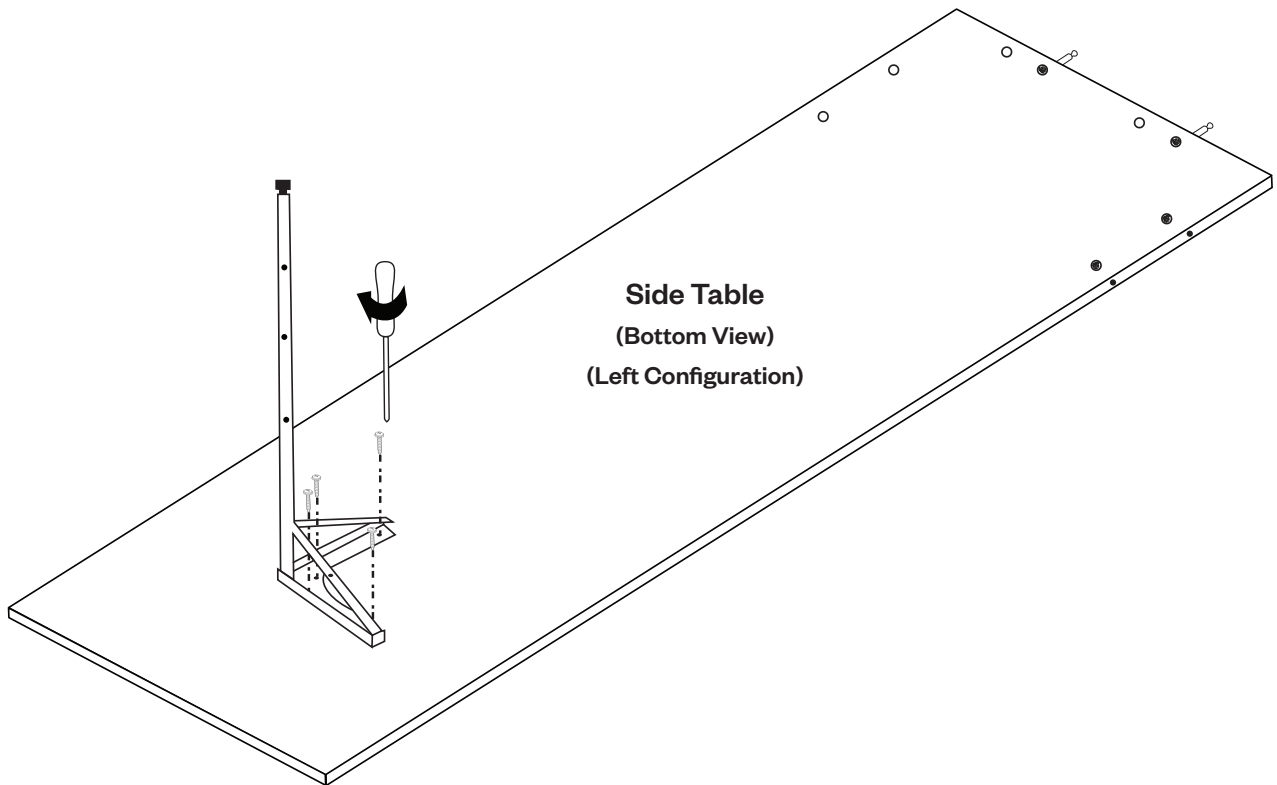
Install **adjustable table leg** with **4 table leg screws**. Leg should be extended to install.



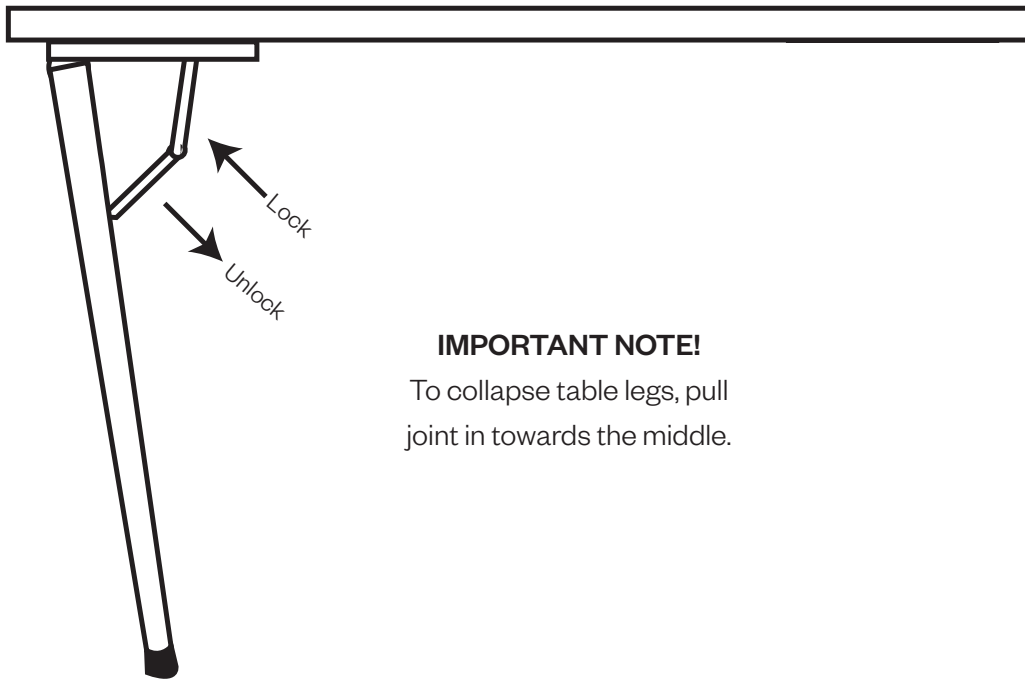
**x1**  
Adjustable  
Table Leg



**x4**  
Table Leg  
Screws



**TABLE OPERATION:**



**IMPORTANT NOTE!**

To collapse table legs, pull joint in towards the middle.



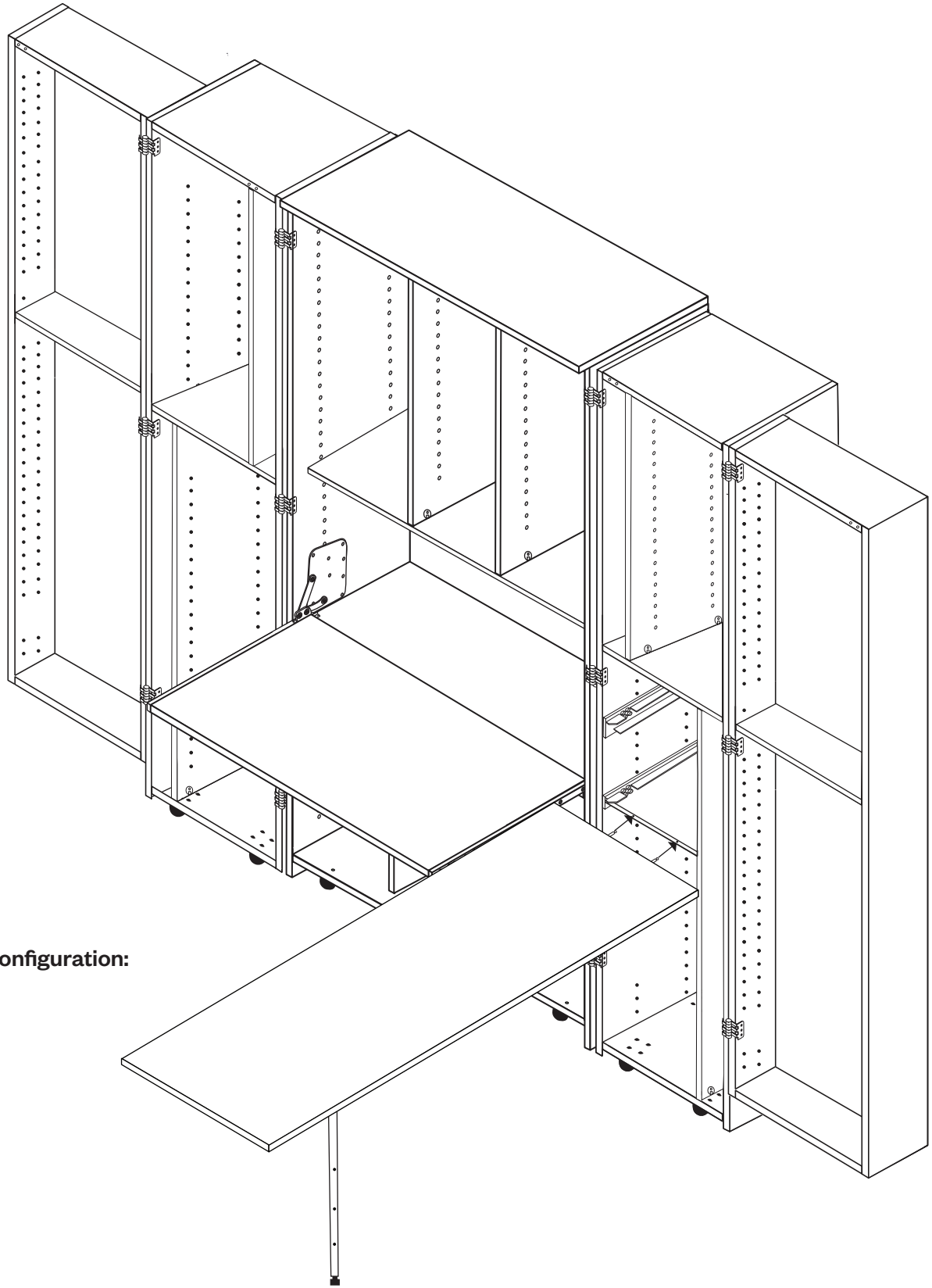
**IMPORTANT NOTE!**

When Table Leg is collapsed, the hinge can extend out about 30 degrees to lock Leg against the Table. Push Hinge towards the table to unlock and to extend the table leg.



**6**

Install **side table** half way into shelf with leg extended. Connect **locking posts** into **DreamBox 2 table**.  
Slide forward.

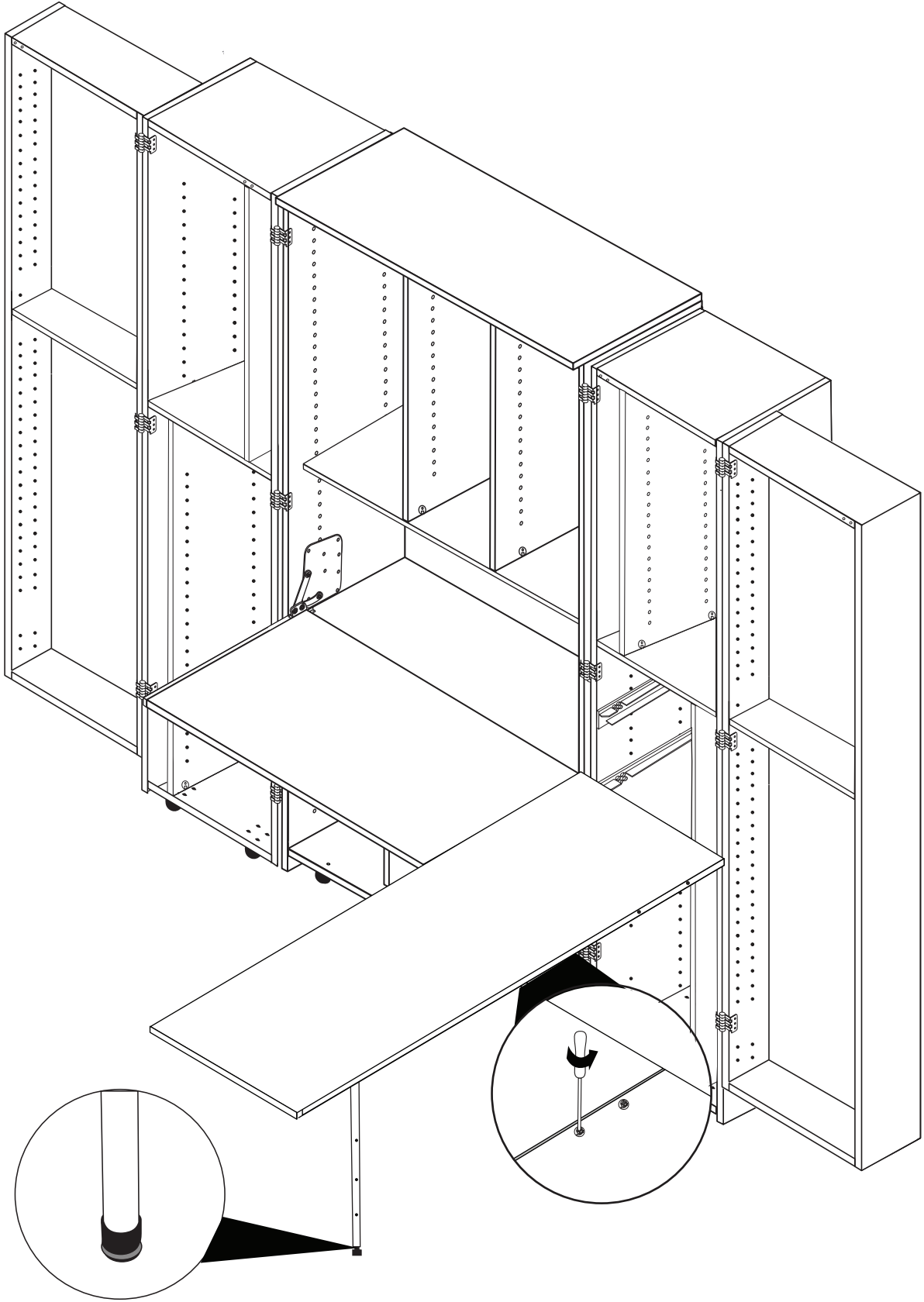


**Hole 9 Configuration:**

**TIP:**  
Install table at a slight angle making sure locking posts are secure in the Dreambox 2 table.

**7**

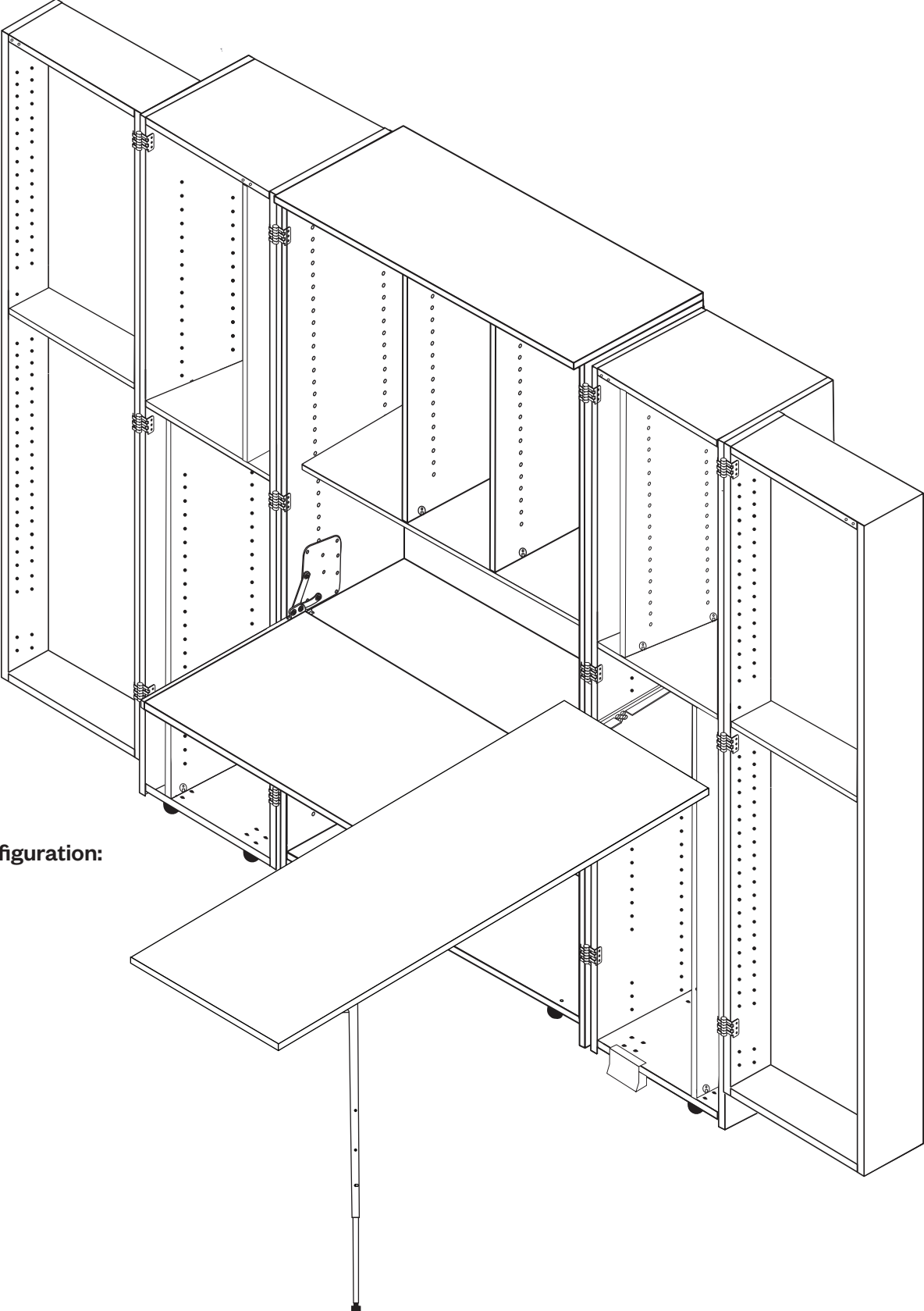
Tighten **2** remaining **cams** under the **side table shelf**.



**TIPS:**  
Use adjustable foot on table leg to make your table level.

8

For standing height install into **upper table guides** with leg extended out to **hole 3**.



Hole 3 Configuration:

**TIPS:**  
Side table will not lock into DreamBox table. Use base stabilizer for side box.

# yipee!

**YOU'VE DONE IT.**

Now sit back and enjoy your newly expanded workspace! Have fun and create!

Remember to share pictures of your crafts and craft space with us on Facebook @CreateRoomFamily.

# warranty

## **IMMEDIATE INSPECTION REQUIRED:**

Upon receiving your Create Room furniture, promptly inspect the package for any external or concealed damage. Report any visible damage to the delivery driver and contact our Customer Service for both freight and parcel deliveries. For concealed damage, notify us within 5 business days with photos to ensure timely support.

## **30-DAY COVERAGE FOR ORDER ACCURACY:**

If your order has missing or incorrect items, let us know within 30 calendar days of delivery. We want to ensure your crafting setup is complete and ready for use.

## **1-YEAR MANUFACTURING DEFECT WARRANTY:**

This warranty covers manufacturing defects affecting use and assembly for a year from delivery. If you run into issues with part quality, including holes drilled wrong or edge banding flaws, we'll provide replacement parts.

## **PRE-ASSEMBLED SECTIONS SUPPORT:**

For pre-assembled furniture parts requiring replacements, we cover individual parts. Our Customer Service team is available to guide you through the replacement process, offering detailed instructions or service ideas.

## **WARRANTY EXCLUSIONS:**

Damage from improper assembly, misuse, or accidents  
Normal wear and tear  
Shipping damage after the initial inspection period  
Not following instructions for assembly, use, or safety  
Non-manufacturing defect claims made after 30 days from delivery  
Environmental damage or inadequate storage conditions  
Damage to personal items from misusing Create Room products  
Use of wheeled furniture on unsuitable surfaces  
Accessories not part of the integral furniture package  
Secondhand purchases or gifts  
Theft  
Minor cosmetic variances

## **CUSTOMER SERVICE AND SUPPORT:**

Contact our Customer Service for any concerns or help at **1 (801) 226-2686**, **customerservice@createroom.com**, or through **live chat on createroom.com**.