

**KONG**<sup>®</sup>   
*Dogs Need to Play.*<sup>®</sup>



**Veterinary Guide**

# KONG<sup>®</sup> Helps Solve...



*Dogs Need to Play<sup>®</sup>* Without an acceptable outlet to fulfill natural instincts a dog will always find something to do—often leading to problem behavior. Prevention is key and finding acceptable ways to satisfy these instincts with KONG Solutions will help create acceptable behavior while also strengthening the bond between dog and owner.



## Chewing

**Without an acceptable outlet for natural chewing instincts, many dogs turn to destructive chewing.**

Prevention is key. Teach your dog acceptable chewing behavior with a treat stuffed KONG for a mentally stimulating, long-lasting challenge. Freeze to extend the chew session.

## Teething

**When puppies' 28 baby teeth erupt through their gums, it can hurt.** Chewing soft rubber helps alleviate teething pain. KONG Puppy Rubber is customized to meet this need while teaching appropriate chewing behavior.

## Separation Anxiety

**Separation anxiety peaks during the first 20 minutes after a dog is alone.** A treat stuffed KONG helps your dog associate being left alone with good things, alleviating those anxiety peaks.

## Boredom

**A dog will always find something to do to beat boredom—this often leads to problem behavior.** Stuffed and frozen KONGs keep dogs engaged, extending playtime with a healthy, long-lasting, mentally stimulating challenge.

## Digging & Barking

**Boredom and fear can lead to digging and barking.** Creating good behaviors starts with productive play that allows dogs to expend excess energy. A frozen, treat-stuffed KONG offers a mentally occupying challenge that burns excess energy.

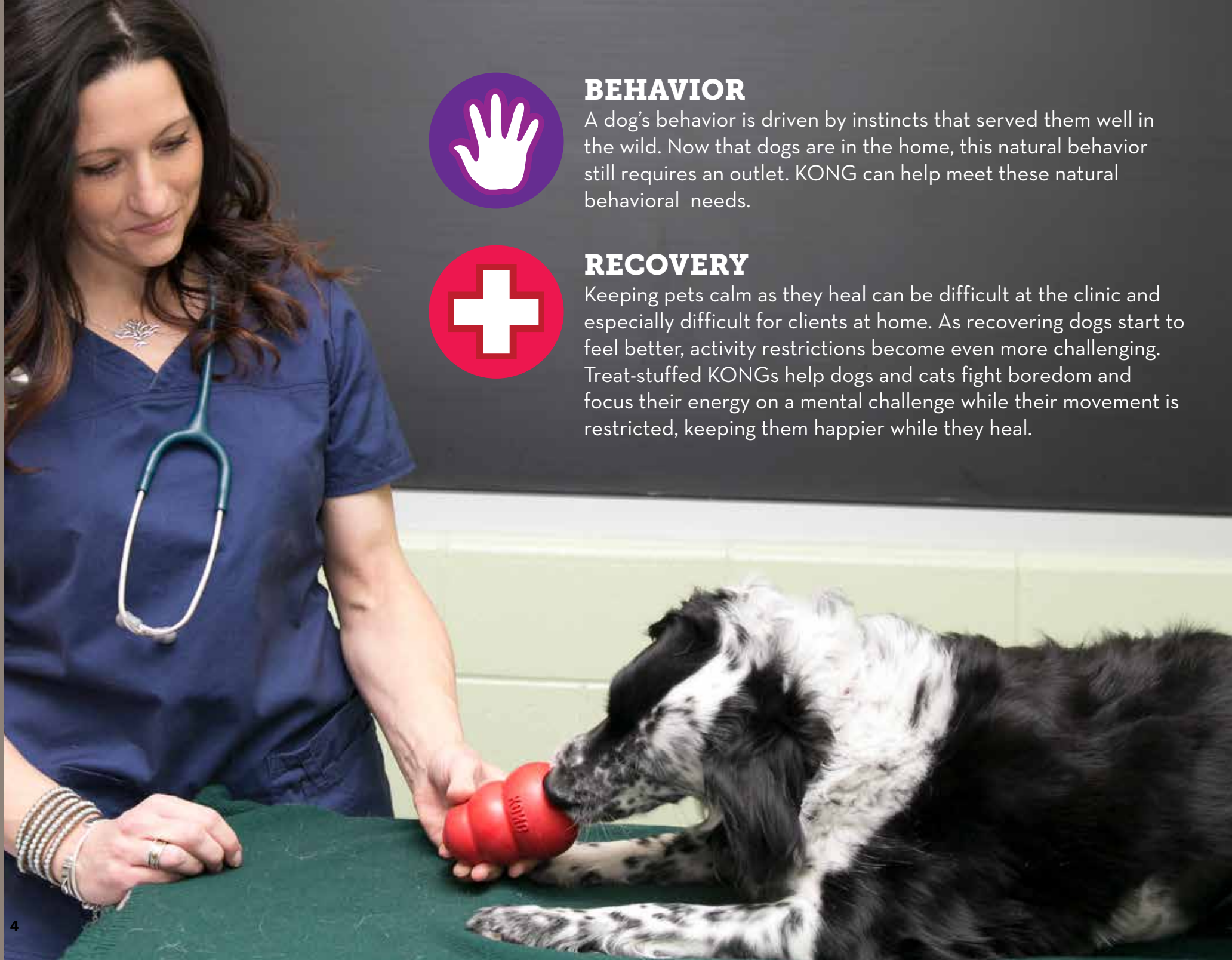
## Crate Training

**Crates provide a sense of security for dogs and can aid in housetraining.** To help dogs build a positive association with their crates from the start, give them a KONG as a mind occupying challenge. Repeating this routine helps your dog feel safe turning their crate into their den.

## Weight Management

**Your dog's weight is critical to his or her health; about 35 percent of dogs are overweight or obese.** Slow down eating and add a satisfying mental and physical challenge by feeding your dog from a KONG Classic or a kibble filled KONG Wobbler.





## BEHAVIOR

A dog's behavior is driven by instincts that served them well in the wild. Now that dogs are in the home, this natural behavior still requires an outlet. KONG can help meet these natural behavioral needs.

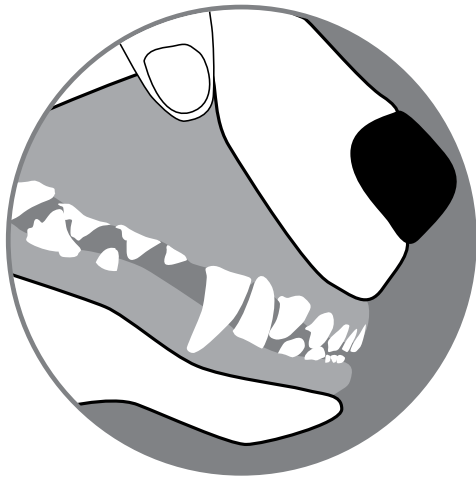
## RECOVERY

Keeping pets calm as they heal can be difficult at the clinic and especially difficult for clients at home. As recovering dogs start to feel better, activity restrictions become even more challenging. Treat-stuffed KONGs help dogs and cats fight boredom and focus their energy on a mental challenge while their movement is restricted, keeping them happier while they heal.



## DENTAL

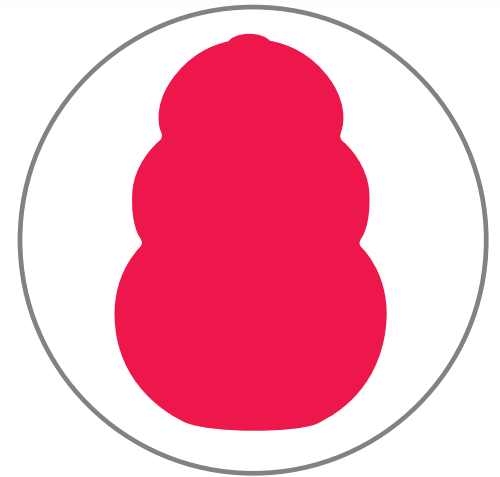
Prevention is key when maintaining a dog's dental health. According to the American Veterinary Dental College, periodontal disease is the most common clinical condition in adult dogs and cats. KONG rubber toys help by encouraging appropriate chewing habits while having the added benefit of cleaning teeth and massaging gums.



Inspect Teeth and gums



Brush teeth frequently



Provide teeth cleaning  
chew toys

# Step 1

## SELECT THE RIGHT KONG FOR EACH DOG

KONGs come in six sizes and five rubber strengths to satisfy the needs of a wide variety of dogs throughout their lifespan. It's important to use the right size KONG so dogs have the safest, most enjoyable experience. Choose the KONG that is appropriate for the dog's head and mouth size and chewing temperament.

**KONG**  
Puppy



**KONG**  
Senior



**KONG**  
Classic



**KONG**  
BLUE



**KONG**  
EXTREME



Soft  
Durable

### KONG Puppy

- Beginning to Light Chewers
- Designed for Puppy Teeth and gums
- Softest Rubber
- Blue & Pink

### KONG Senior

- Light Chewers
- Designed for Aging Teeth and gums
- Soft Rubber
- Purple

### KONG Classic

- Average Chewers
- Designed for most adult dogs
- Durable Rubber
- Red

### KONG Blue

- Average to Intense Chewers
- Designed for most adult dogs
- Durable Rubber
- Radio-opaque
- Blue

### KONG Extreme

- Power Chewers
- Designed for extreme chewers
- Most Durable Rubber
- Black

Most  
Durable



Made in the USA with All-Natural Rubber

# Step 2

## DETERMINE THE DOG'S CHEWING STYLE

There are three basic chewing styles when it comes to dogs and their toys.

1. **Gentle Chewers** are easy on toys and prefer plush or fabric toys. They like to lick or suck their toys, but rarely destroy them.
2. **Average Chewers** love a variety of toys and often carry them around. While they may destroy plush and fabric toys, they rarely destroy rubber toys.
3. **Power Chewers** are strong, determined chewers. Use discretion when choosing their toys and select durable, interactive play toys and hard rubber toys. Sizing up can help toys last longer.



# Step 3

## SELECT THE APPROPRIATE SIZE KONG

The dog should be able to easily grip the KONG in his or her mouth. If the KONG fits completely inside a dog's mouth, it's too small. If the dog can't comfortably grab the KONG in his or her jaws, it's too big to play with. When in doubt, size up for safety.

*For all dogs—regardless of chewing temperament or mouth size – play should be supervised until the pet parent is confident the dog won't destroy the toy. Be sure to replace any toy with cuts, tears or rips.*





## **KONG® CLASSIC™**

The KONG Classic is the gold standard of dog toys and has become the staple for dogs around the world for over forty years. Offering enrichment by helping satisfy dogs' instinctual needs, the KONG Classic's unique all-natural red rubber formula is ultra-durable with an erratic bounce that is ideal for dogs that like to chew while also fulfilling a dog's need to play. Want to extend play time? Be sure to stuff with tempting bits of kibble and entice with a dash of peanut butter. Add to the fun by adding KONG Snacks and topping with KONG Easy Treat.

### **Available in:**

- T4 - X-Small
- T3 - Small
- T2 - Medium
- T1 - Large
- KXL - X-Large
- KK - XX-Large



# KONG® PUPPY

The Puppy KONG dog toy is customized for a growing puppy's baby teeth, the unique, all-natural rubber formula is the most gentle within the KONG rubber toy line. Designed to meet the needs of a puppy's 28-baby teeth, it helps teach appropriate chewing behavior while offering enrichment and satisfying a younger pup's instinctual needs while the erratic bounce make it ideal for those pups that just want to play. A stuffed Puppy KONG occupies busy little ones while allowing pet parents the freedom to attend to their unique needs.

## Available in:

KP4 - X-Small

KP3 - Small

KP2 - Medium

KP1 - Large



Available in Blue and Pink



# KONG® SENIOR

The KONG Extreme dog toy represents the most durable strength of KONG rubber. Designed for the toughest of chewers, the KONG Extreme offers enrichment and helps satisfy dogs' instinctual needs. The KONG unique, ultra-durable, all-natural rubber formula is designed for determined chewers, while the erratic bounce fulfills a dog's need to play.

## Available in:

KN3 - Small

KN2 - Medium

KN1 - Large

# KONG BLUE™

In addition to offering enrichment that helps satisfy dogs' instinctual needs, KONG Blue is radio-opaque, a special version of the iconic toy offered exclusively to veterinarians. KONG Blue Rubber is 25 percent stronger than KONG Classic Rubber, ideal for more intense chewers. Freezing a treat-stuffed KONG can extend the playtime and crank up the challenge for determined chewers.

## Available in:

VT3 - Small

VT2 - Medium

VT1 - Large

VTX - X-Large

VTK - XX-Large



# KONG® EXTREME

The KONG Extreme dog toy represents the most durable strength of KONG rubber. Designed for the toughest of chewers, the KONG Extreme offers enrichment and helps satisfy dogs' instinctual needs. The KONG unique, ultra-durable, all-natural rubber formula is designed for determined chewers, while the erratic bounce fulfills a dog's need to play.

## Available in:

K3 - Small

K2 - Medium

K1 - Large

UXL - X-Large

UKK - XX-Large





## GOODIE BONE™

The KONG Goodie Bone is ideal for dogs that love the bone shape, but need a safe and strong rubber toy. The ends of the Goodie Bone have patented Goodie Grippers for stuffing with KONG Snacks or filling with Easy Treat. Goodie Bone can also be used to hold a rawhide stick or bone that will also remove plaque and tartar during chewing. Also available in Puppy Rubber for a growing puppy's baby teeth, and Extreme rubber for power chewers.

### Available in:

KB51 - X-Small w/Rope

KB31 - Small

10011 - Medium

KR1 - Medium w/Rope

10014 - Large

10012 - Medium Extreme

10015 - Large Extreme

XP51 - Puppy X-Small w/ Rope

KP31 - Puppy Small

**Puppy Goodie Bone Available in Blue and Pink**

## BINKIE

The KONG Puppy Binkie promotes proper chewing behavior. Specially designed for the teething puppy, the Puppy Binkie helps soothe sore gums. Stuff the center of the Binkie with KONG Puppy Easy Treat, Snacks or Ziggies.

### Available in:

KP37 - Small

KP27 - Medium

**Available in Blue and Pink**





## EASY TREAT™

KONG Easy Treat is a delicious, highly digestible and trans fat-free spread, designed for use with KONG rubber toys. Each can is specifically engineered for convenient, no mess, stuffing and there is no refrigeration required. In addition to its use as a KONG stuffing ingredient, anecdotal evidence shows that a quick squirt of Easy Treat at check-ups can help alleviate anxiety and create a positive association with Veterinary visits.



### Available in:

- XS1 - Liver
- XS2 - Peanut Butter
- XS4 - Puppy
- XS6 - Bacon and Cheese
- XS7 - Pepperoni

# DENTAL STICK™

KONG Dental Stick satisfies natural chewing instincts while the patented Denta-Ridges reduce plaque and gently clean and condition teeth and gums. Stuff with treats or fill with KONG Easy Treat for added enticement.

## Available in:

KD3 - Small

KD2 - Medium

KD1 - Large

KP13- Puppy Small

KP23 - Puppy Medium

KP33 - Puppy Large



Puppy Dental Stick Available in Blue and Pink



# DENTAL

KONG Dental's special grooves are engineered to remove plaque and tartar as dogs chew. Fill the ridges with KONG Easy Treat and stuff treats in the middle of the toy to boost chewing motivation.

## Available in:

DK3 - Small w/Rope

DK2 - Medium w/Rope

DK1 - Large

DXL - X-Large

# STUFF-A-BALL™

Indulge dogs' chewing instincts while promoting dental health with a treat-filled KONG Stuff-A-Ball. The toy helps remove plaque and condition gums while dogs chew. Fill the patented Denta-Ridges with KONG Easy Treat to extend use.

## Available in:

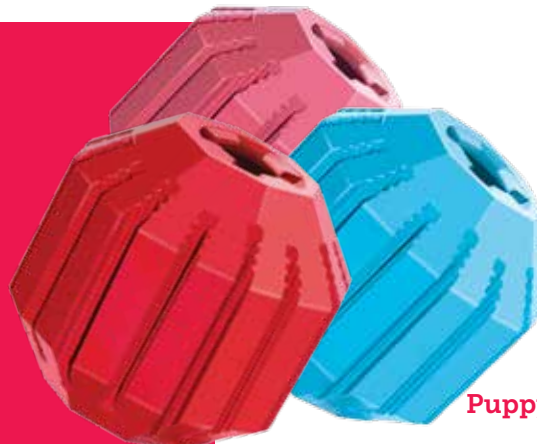
KS3 - Small

KS2 - Medium

KS1 - Large

KP22 - Puppy Medium

KP32 -Puppy Small



Puppy Activity Ball Available in Blue and Pink

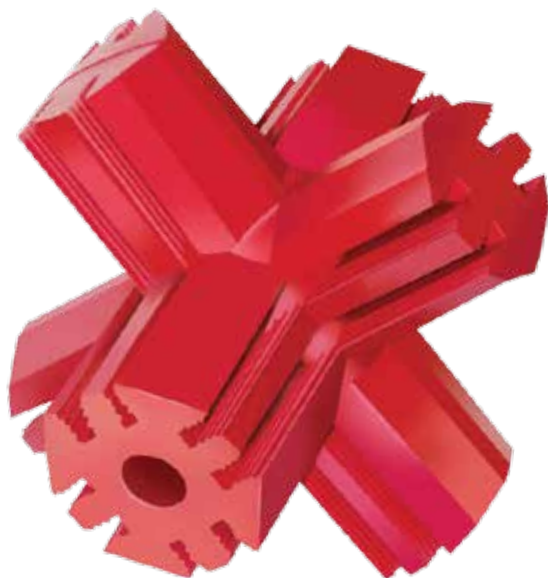
## GYRO™

The new KONG Gyro is sure to entertain with irresistible roll and flip action keeping dogs enticed and intrigued. With the center spinning orb and static outer ring, this dynamic toy encourages dogs to push, paw and roll the GYRO, delightfully dispensing tasty treat rewards along the way. Ideal for independent play, stuff with snacks or kibble for added fun and extended playtime. Available in large and small sizes.

### Available in:

PGY2 - Small

PGY1 - Large



## JUMP'N JACK™

KONG Jump 'N Jack's shape ensures that no two bounces are alike, launching dogs into a more fascinating game of fetch. Chewing on the toy satisfies dogs' natural instincts while the patented Denta-Ridges reduce plaque and gently clean teeth and gums. Stuff with treats or paste to extend playtime.

### Available in:

KJ3 - Small

KJ2 - Medium

KJ1 - Large

## WOBBLER™

When dogs push KONG Wobbler with their nose or paw, it wobbles, spins and rolls, dispensing treats as it goes. The unpredictable movement keeps sessions challenging, entertaining even the most seasoned users. Use the Wobbler to dispense kibbles at mealtime and slow down eating and increase physical activity. Made from a durable, high-strength polymer, it unscrews for easy filling and cleaning.

### Available in:

PW2 - Small

PW1 - Large



## BOUNZER™

The classic KONG silhouette creates a crazy bounce that keeps dogs interested and active during a game of fetch, encouraging healthy exercise. KONG Bounzer is also a dynamic option for solo play – when compressed, it bounces back to its original shape as it rolls and spins, keeping dogs engaged.

### Available in:

PB2 - Medium

PB1 - Large

PBX - X-Large





## KONG GENIUS™

Bust boredom and stimulate dogs' natural curiosity by filling KONG Genius with treats. The irregular shape keeps things interesting as dogs flip, roll and toss it to dispense food. Connect with other KONG Genius toys for an advanced challenge.

### Available in:

GL3 - Small Leo

GL1 - Large Leo

GM3 - Small Mike

GM1 - Large Mike

## QUEST™

Activate dogs' natural foraging instincts by stuffing treats into KONG Quest's flexible channels and holes. The toy keeps dogs engaged with treats that are easy to see and sniff, yet challenging to extract.

### Available in:

PE3 - Small Bone

PE1 - Large Bone

PE33 - Small Star Pods

PE13 - Large Star Pods

PE34 - Small Wishbone

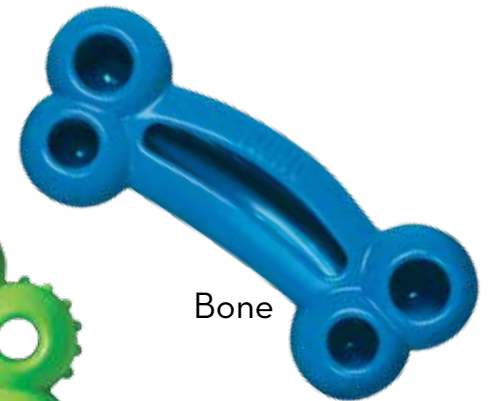
PE14 - Large Wishbone

Available in assorted colors



Wishbone

Star Pods



Bone







Available in assorted colors

## TUGGA™ & WEAVES™

Tug-and-toss toys with long durable tails that delight dogs' natural instincts to shake, KONG Tugga Wubba and KONG Wubba Weaves feature rope that cleans teeth as dogs chew and play. Fuel for lots of healthy running, these toys also help strengthen the bond between pet parents and dogs. KONG Wubba Weave squeaks for added engagement.

### Available in:

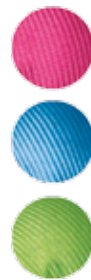
- WT3 - Small Tugga Wubba
- WT1 - Large Tugga Wubba
- WTX - X-Large Tugga Wubba
- WV3 - Small Wubba Weaves
- WV1 - Large Wubba Weaves
- WVX - X-Large Wubba Weaves

## SAFESTIX™

A safer alternative to hazardous wooden sticks, durable KONG Safestix are perfect for games of fetch and tug. Made of one continuous piece of flexible rubber for increased safety, they're a terrific tool for encouraging exercise and building the bond between pet parents and dogs. Round end knobs help with grip. Plus, KONG Safestix float.

### Available in:

- PF3 - Small
- PF2 - Medium
- PF1 - Large



Weaves

Available in  
assorted colors



Tugga

## ZOOMGROOM™

This multi-tasking grooming and shampooing brush sucks loose hair up like a magnet as the 3/4-inch rubber fingers reach through the coat to massage the skin, stimulating capillaries and natural oil production.

### Available in:

ZG11 - Small/Puppy Raspberry

ZG21 - Small/Puppy Boysenberry

ZG1 - Raspberry

ZG2 - Boysenberry





# Cats Need to Play.™

**Most people consider cats to be primarily independent, solitary animals but they are actually very social. Pet parents who engage in appropriate play with their cat can help develop a confident, sociable and well-behaved lifetime friend. Play can also help to correct or prevent undesirable behaviors caused by stress, depression or fear. KONG has a variety of mentally and physically stimulating toys to keep cats active and healthy.**



## KITTY KONG™

KONG Kitty KONG's unpredictable bounce and light weight combine to stimulate cats' natural hunting instincts and inherent curiosity. Make it even more irresistible by squeezing in a squirt of KONG Salmon Easy Treat or stuffing it with a pinch of catnip or dry kibble to extend playtime.

**Available in:**

C4 - Kitty KONG



## INFUSED™ TIPPIN TREAT

KONG Infused toys are designed using a KONG unique blending process that ingrains catnip into enticing toys arousing cats' curiosity and natural hunting instincts. The KONG Tippin Treat toy has bursting scents of built-in catnip with an engaging wobble and rewarding treat dispensing action. The detachable feather teaser adds to the excitement and tempts curiosity for hours of solo playtime fun.

**Available in:**

CA430 - Infused Tippin Treat

## CAT WOBBLER™

Each bat, bop or swipe launches this treat-dispensing toy into bobbing, wobbling action that fascinates cats. KONG Cat Wobbler keeps cats mentally and physically engaged. Fill it with kibble to slow eating at mealtime to help maintain weight and keep cats mentally active.

### Available in:

PW4 - Cat Wobbler



## TREAT BALL™

Place treats inside and watch your cat chase and swat these treat-dispensing toys. While the Treat Ball and Treat Cone are challenging for cats, they are easy to refill. The mental and physical stimulation will ensure a happy, healthy cat.

### Available in:

PE4 - Treat Ball

## CAT ZOOMGROOM™

Condition coat and skin and calm cats with this multi-tasking grooming tool. The soft rubber brush sucks up loose fur like a magnet, helping reduce hairball formation, while the firm, flexible 3/4-inch fingers reach through fur and help condition skin. The gentle massage action helps soothe cats, especially during potentially stressful situations, like vet visits.



### Available in:

CZG - Cat ZoomGroom

## PUZZLE TOYS

Wild, unpredictable action lures cats to play with KONG Puzzle Toys, satisfying their instinctual need to hunt and chase while encouraging healthy exercise. The high-speed roll of KONG Eight Track balls and the erratic, fluttering feather flights in Glide N' Seek (batteries included) transfix cats for extended enrichment.

### Available in:

CA48 - Glide 'n Seek

CA42 - Eight Track



Eight Track



Glide 'n Seek





**KONG**<sup>®</sup>  
*Dogs Need to Play.*<sup>®</sup>

KVP International, Inc. • 13775 Ramona Ave. • Chino, CA 91710  
888-411-7387 • Fax: 888-855-7387 • KVPUSA.com  
© KONG Company 2017 R0517