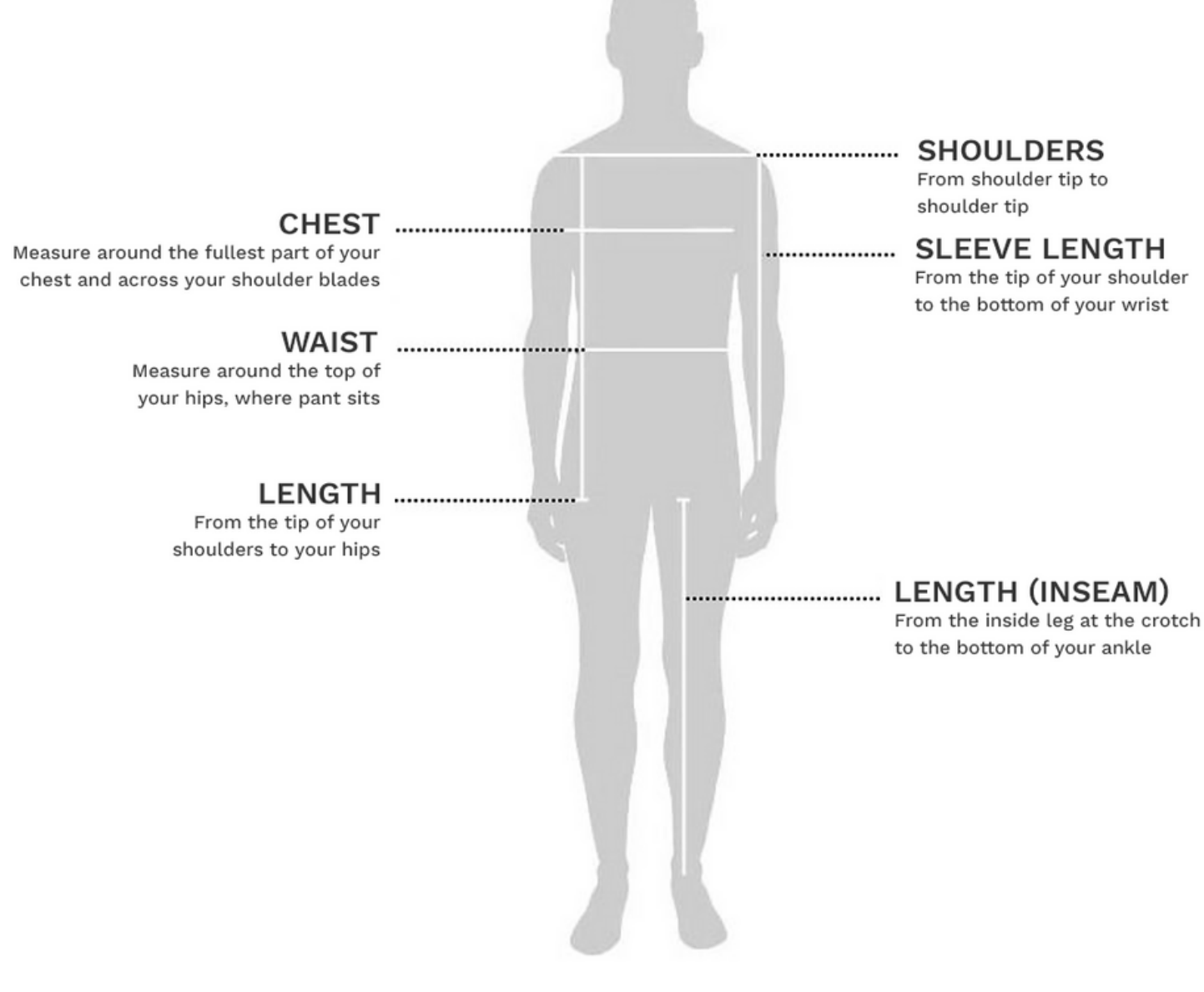


CUSTOM UNIFORM MEASUREMENT AND FIT GUIDE

For all chest/bust size measurements, use a measuring tape to measure under the armpits around the fullest part of your chest

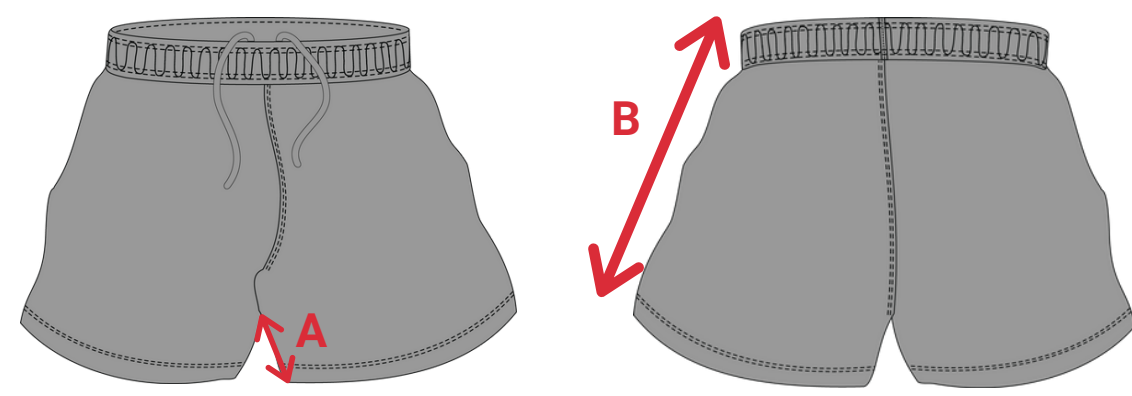
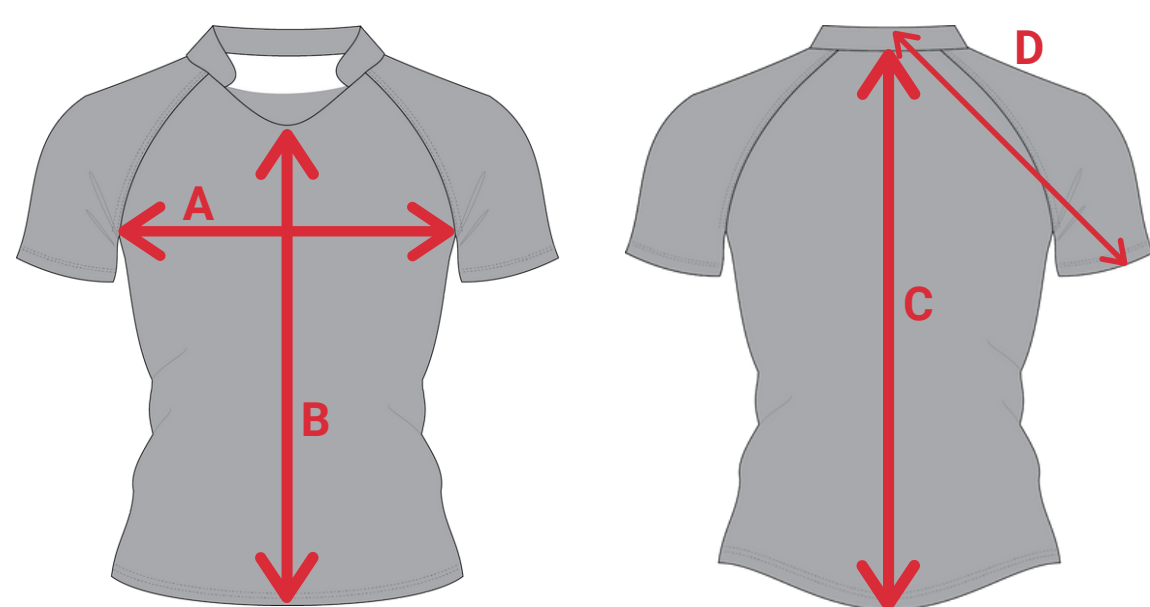
Body Measurements:

Use a measuring tape to get accurate body measurements according to the image below



Garment Measurements:

Lay-flat, unstretched garment measurements



*all of our standard, New Zealand style custom shorts have a 4" inseam

PERFORMANCE FIT

- Second-skin fit, wears like compression gear
- Prevents jersey tackles and wicks moisture
- Pairs best with Pro Cool or Popcorn Material
- Size up for a looser fit on larger players. Fits true to size if you prefer a second-skin wear.
- Preferred by elite and high performance teams



SPORT FIT

- Semi-fitted, athletic cut but not next to skin
- Works well with Pro Cool, Popcorn, and Polytex materials
- Preferred by teams with larger players or with a wide range of fitness levels.
- Generally fits true to size. Size up or down for a looser or tighter fit, as preferred.



STANDARD FIT

- Relaxed-fit, square cut with generous room
- Pairs best with Polytex material but also works with Pro Cool and Popcorn
- Preferred by Old Boys or as social jerseys
- Oversized fit. Size down one or two sizes for a tighter fit, as preferred.



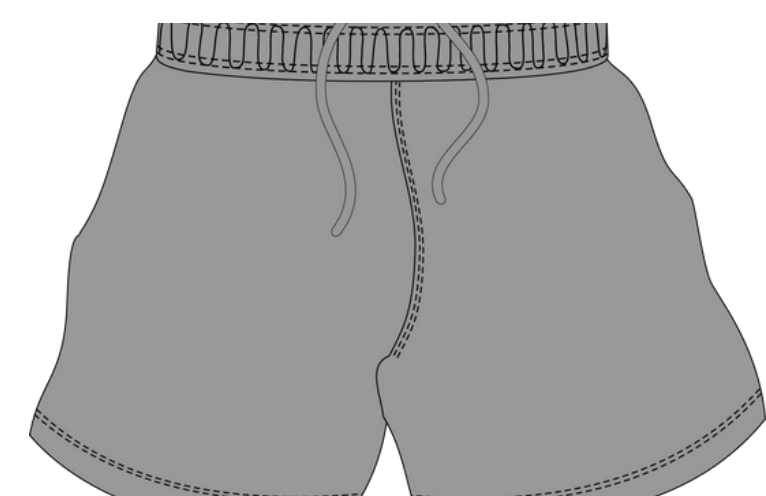
TRADITIONAL FIT

- Tradition cotton relaxed-fit rugby shirt
- Available in heavyweight or social weight cotton
- Preferred by Old Boys or as social jerseys
- Oversized fit. Size down for a tighter fit, as preferred, but allow some room for shrinkage over time.



PERFORMANCE SHORTS

- New Zealand style standard cut rugby shorts
- Cut short (4" inseam) with generous leg openings and elastic waist with tie to accommodate an athletic build
- Fits true to waist size.



SHORTS MATERIAL OPTIONS:

- **Cotton Twill:** Our most durable short option is made of tough, lightweight cotton twill with stretch Pro Cool crotch panels for additional freedom of movement. Recommended for rugby players at any level or style of play.
- **Pro Cool:** All-over sublimated 4-way stretch material. These are our lightest-weight shorts. Preferred by sevens teams or those who play in hot climates. Not recommended for teams who lift by the shorts.
- **Cut and Sub Twill/Pro Cool:** The best of both worlds, these shorts feature a durable cotton single-color twill body with stretch Pro Cool side panels and crotch. Side panels can be fully sublimated with logos and designs. Recommended for rugby players of any level of style or play who do NOT lift by the shorts.

PERFORMANCE FIT JERSEYS

Size	Youth XSM	Youth SM	Youth MD	Youth LG	Youth XL	XSM	SM	MD	LG	XL	2XL	3XL	4XL	5XL
Chest Size (in)	22-24"	26-28"	30-32"	34"	36"	38"	40"	42"	44"	46"	48"	50"	42"	54"
1/2 Chest Garment Width (in)	12"	14"	15"	15.5"	16"	16.5"	17"	18"	19"	20"	21"	22"	23"	23"
Front Body Length (in)	18"	21"	22"	23"	24"	25"	26"	28"	30"	30"	31"	31"	32"	33"
Back Body Length (in)	20"	23"	24"	25"	26"	27"	28"	30"	32"	32"	33"	33"	34"	35"
Sleeve Length From Center Back (in)	11"	12.5"	12.5"	13.5"	14.4"	15.5"	15.5"	16"	16.2"	17"	17.5"	18"	18.5"	18.75"

SPORT FIT JERSEYS

Size	Youth XSM	Youth SM	Youth MD	Youth LG	Youth XL	XSM	SM	MD	LG	XL	2XL	3XL	4XL	5XL
Chest Size (in)	22-24"	26-28"	30-32"	34"	36"	38"	40"	42"	44"	46"	48"	50"	52"	54"
1/2 Chest Garment Width (in)	15"	16"	17"	18"	19"	20"	21"	22"	23"	24"	25"	26"	27"	28"
Front Body Length (in)	21"	22"	24"	25"	26"	28"	29"	30"	30"	30"	31"	31"	31"	32"
Back Body Length (in)	21"	22"	24"	25"	26"	28"	29"	30"	30"	30"	31"	31"	31"	32"
Sleeve Length From Center Back (in)	14"	15"	16"	17"	18"	19"	20"	20"	20"	21"	21"	21"	21"	21"

STANDARD FIT JERSEYS

Size	Youth XSM	Youth SM	Youth MD	Youth LG	Youth XL	XSM	SM	MD	LG	XL	2XL	3XL	4XL	5XL
Chest Size (in)	28"	30"	32"	34"	36"	38"	40"	42"	44"	46"	48"	50"	52"	54"
1/2 Chest Garment Width (in)	15"	16"	17"	18"	19"	20"	21"	22"	23"	24"	25"	26"	27"	28"
Front Body Length (in)	21"	22"	24"	25"	26"	28"	29"	30"	30"	30"	31"	31"	31"	32"
Back Body Length (in)	21"	22"	24"	25"	26"	28"	29"	30"	30"	30"	31"	31"	31"	32"
Sleeve Length From Center Back (in)	14"	15"	16"	17"	18"	19"	20"	20"	20"	21"	21"	21"	21"	21"

PERFORMANCE SHORTS

Size	Youth XSM	Youth SM	Youth MD	Youth LG	Youth XL	XSM	SM	MD	LG	XL	2XL	3XL	4XL	5XL
Waist Size (in)	20-22"	22-24"	24-26"	26-27"	28"	30"	32"	34"	36"	38"	40"	42"	44"	46"
Inseam (in)	4"	4"	4"	4"	4"	4"	4"	4"	4"	4"	4"	4"	4"	4"
Outside Leg (in)	10.5"	11.5"	12.5"	13"	13.5"	14.5"	15"	15.5"	16"	16.5"	17"	17"	17"	17"