

POLAR FEET®



Fall 2021

Polar Feet®  
336 East 1st Ave, #203  
Vancouver, BC V5T4R6  
ph: 604-707-0799  
fx: 604-738-8279  
info@polarfeet.com

www.polarfeet.com  
www.polarfeet.ca

## Polar Feet Fabrics 2021

This is the most important page in the catalogue.  
Any of our products can be made in any of our fabric styles.



Domino



Supersoft Black



Polar Bear



Nordic



Supersoft Cream



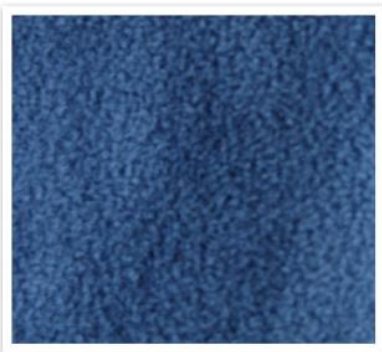
Kaleidoscope



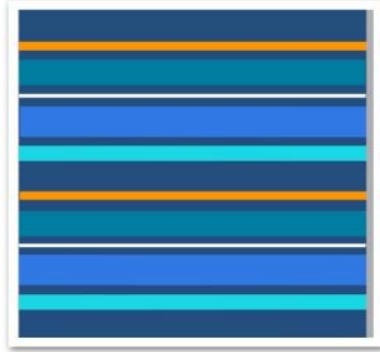
Soft Grey



Snow



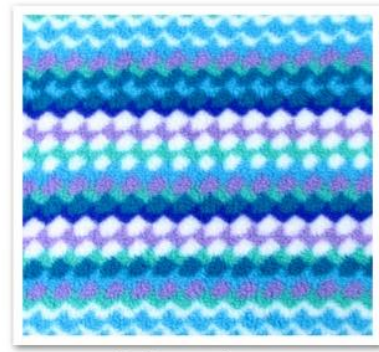
Denim



Jazz



Purple Rain



Ripples



Blue Argyle



Snow Camo



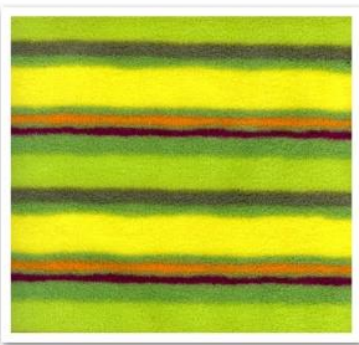
Flannel



Black



Pink Argyle



Limeade



Jellybean



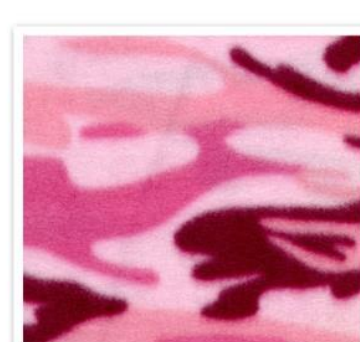
Lumberjack



Zigzag



Smarties



Pink Camo



Candy

## Adults' Fleece Socks

Velvety soft 100% polyester fleece socks sewn with flat-lock seams.

Regular or Nonskid Sole with grippers. Sizes: S (W 6-7/ M 5-6), M (W 8-9/M 7-8), L (W 10-11/M 9-11), XL (M 12-13), 2XL (M 14-15), 3XL (M 16-17)



Kaleidoscope



Ripples



Polar Bear



Supersoft Black



Denim



Lumberjack



Nordic



Supersoft Cream



Jazz



Snowflake



Purple Rain



Zigzag



Snow Camo



Blue Flannel



Domino



Blue Argyle



Soft Grey



Jellybean



Smarties



Pink Camo



Black



Limeade



Soft Argyle



Nonskid Appliqué  
Available in Any Style

## Kids' Fleece Socks

Soft and warm socks for active kids or indoor kids.

Choose **Regular** or **Nonskid Soles** (little grippy paws for traction on slippery floors.)

Socks fit shoe sizes (in brackets):  
S (7-8), M (9-10), L (11-1), XL (2-4)



Ripples



Kaleidoscope



Polar Bear



Flannel



Lumberjack



Domino



Jazz Stripes



Snow Camo



Nordic



Blue Argyle



Zigzag



Candy



Jellybean



Snowflake



Pink Camo



Smarties



Snow Camo



Limeade

## Over-the-Knee Socks

Long, tall, and so cozy!  
Extra-long OTK length.  
Available in regular & wide calf.  
Sizes: S, M, L



## Tabi Socks

Popular with barefoot running enthusiasts, campers, flipflop wearers.  
Fleece wicks moisture away from your skin out to the surface where it dries quickly.  
Adult sizes only: S, M, L, XL, XXL (Please refer to sock size guide.)



## Adult & Youth Mittens

Two layers of our premium velvety fleece for warmth. Outstanding for winter activities thanks to breathability and moisture wicking properties



### PF Mittens      Unisex Sizing

	Width Across Knuckles	Length Tips to Wrist
Small	4¼"	8¼"
Medium	4½"	9½"
Large	4¾"	10"
XL	6"	11½"



## Beanies



## Neck Warmers

Must-have for winter outdoor fun.



and Headbands!

## Teddy Hats

Soft fleece infant hat sewn with flat-lock seams.  
Stretch trim, velcro closure.  
Sizes: XS (0-6M), S (6-12M), M (12-18M)



Jellybean



Supersoft Cream



Kaleidoscope



Jazz Stripe



Lumberjack

## Thumbless Mittens

Soft wrist elastic and stretch trim.  
Sizes: XS (0-6M), S (6-12M)



## Baby Booties

Easy on fleece booties with stretch trim and velcro closure.  
Sole is two layers of fleece with nonskid appliqué.  
Sizes: XS (0-6M), S (6-12M), M (12-18M)



Lumberjack



Supersoft Cream



Jellybean

# Women's Snugs™

Over-the-ankle style slippers are soft and cozy .

Real suede mudguard and sole is naturally nonslip. Double stitched for durability.

Fleece "berber" lining wicks moisture and dries quickly.

Comfy insole featuring memory foam and extra 5mm EVA heel cushion.

Washer and dryer friendly.

Made in China.

Sizes: S (7.5-8.5), M (9-10), L (10.5-11.5), XL (12-13)



*Black Berber*



*Nordic\**

Slugs look great straight up, too!



*Cream Berber*



*Grey Berber*



*Snow*

New "Snow" fleece, cream berber lining, grey suede mudguard & outsole



*Buffalo Plaid*



## Women's Perfect Mocs™

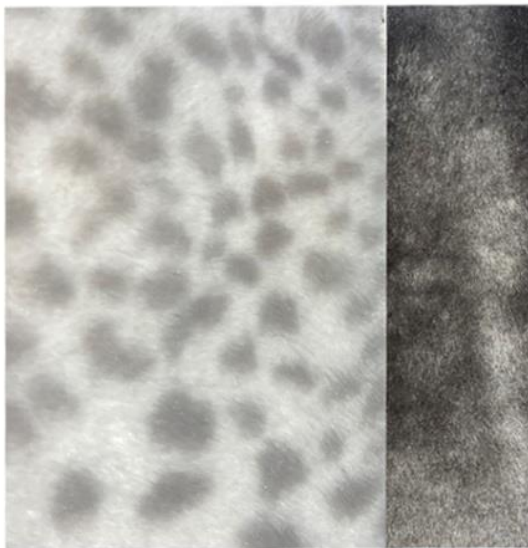
- Soft and cozy fleece uppers
- Real suede mudguard and sole is naturally nonslip. Double stitched for durability
- Fleece "berber" lining wicks moisture and dries quickly
- Comfy insole featuring memory foam and extra 5mm EVA heel cushion
- Washer and dryer friendly
- Imported
- Sizes: XS (5-6), S (6.5-7.5), M (8-9), L (9.5-10.5)



*Black Berber*



*White Berber*



*Snow Cat*  
Soft faux fur with grey  
suede outsole



*Grey Berber*



*Tartan*  
with dark blue dyed-to-match  
suede outsole & hot pink  
footbed



*Snow*

## *Kids' Snugs Slippers*

A tough and durable yet super lightweight indoor bootie-style slipper that kids will love. Wear them "straight up" or turn down the cuff to reveal the contrasting lining. Made with all the attention to quality you expect from Polar Feet.

Memory foam insole with additional 5mm EVA support at the heel.  
All natural suede outsole and mudguard provide durability and nonskid traction.  
Double stitched for durability (and 'cause it looks nice.)  
Washer and dryer safe.  
Made in China.

Sizes: XXS (9.5-10.5), XS (11-12), S (12.5-13.5), M (1-2), L (2.5-3.5), XL (4-5)



*Polar Bear*



*Little Lumberjack*



*Brown Bear*



*Nordic*

## *Kids' Perfect Mocs™*

- Soft and cozy fleece uppers.
- Real suede mudguard and sole are naturally nonslip. Double stitched for durability.
- Fleece lining wicks moisture and dries quickly.
- Comfy insole featuring memory foam and extra 5mm EVA heel cushion
- Washer and dryer friendly
- Imported
- Sizes: XXS ( 9.5-10.5), XS (11-12), S (12.5-13.5), M (1-2), L (2.5-3.5), XL (4-5)



*Lumberjack*



*Snow*



*Cream Berber*



*Brown Bear*

### *Tartan*

A late addition--nubbly and soft polyester fabric. Will have dyed-to-match dark blue mudguard and outsole. Contrasting hot pink footbed.



## Men's Snugs™

Our biggest selling slipper--by far.  
Over-the-ankle style slippers are soft and cozy.  
Real suede mudguard and sole is naturally nonslip. Double stitched for durability.  
Fleece "berber" lining wicks moisture and dries quickly.  
Comfy insole featuring memory foam. Fleece footbed.  
Washer and dryer friendly.  
Made in China.  
Sizes: S (7.5-8.5), M (9-10), L (10.5-11.5), XL (12-13), XXL (14-15)



*Black Berber*



*Lumberjack*



*Grey Berber*

## Men's Perfect Mocs™

Soft and cozy fleece uppers.

Real suede mudguard and sole. Double stitched for durability.

Fleece "berber" lining wicks moisture and dries quickly.

Comfy insole featuring memory foam and extra 5mm EVA heel cushion.

Washer and dryer friendly.

Made in China.

Sizes: S (7.5-8.5), M (9-10), L (10.5-11.5), XL (12-13), XXL (14-15)



### *Lumberjack*

- Black Berber Lining
- Black Suede



### *Nutmeg*

- Brown Berber Lining
- Brown Suede



### *Grey Berber*

- Grey Berber Lining
- Grey Suede



### *Black Berber*

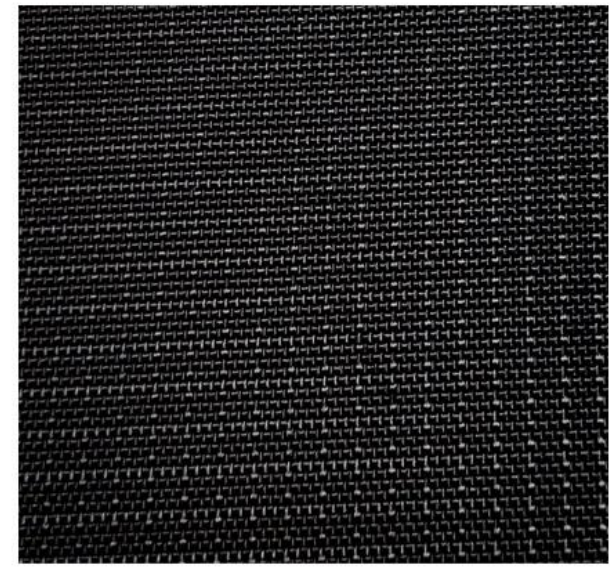
- Black berber lining
- Black Suede

# Camp Booties

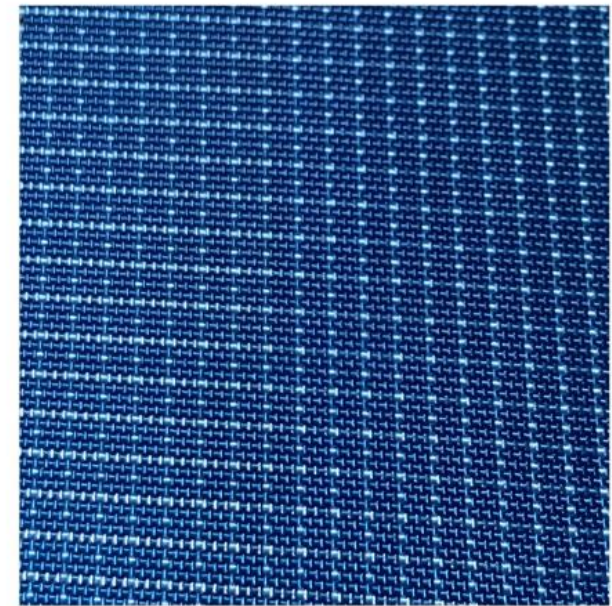
Indoor/Outdoor  
slippers for camp,  
après-ski or dance



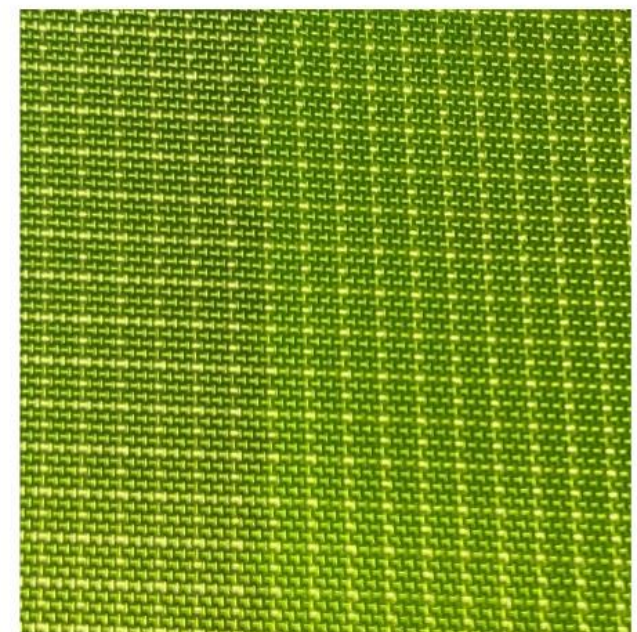
Black



Black



Blue



Green

Water-resistant , rip-stop nylon shell, soft micro-fleece footbed, EVA + memory foam mid-sole, and tough non-slip water resistant mudguard and outsole will not track in mud or snow. Poly fill. Imported. Indoors or out--your feet will be cozy and comfy.

## Slipper Size

XS  
S  
M  
L  
XL  
XXL

## Shoe Size

W 5-6  
W 6-7  
W 8-9  
W10-11/M8-9  
M 10-11  
M 12-13



Polar Feet®  
336 East 1st Ave, #203  
Vancouver, BC V5T4R6  
ph: 604-707-0799  
fx: 604-738-8279  
info@polarfeet.com



[www.polarfeet.com](http://www.polarfeet.com)  
[www.polarfeet.ca](http://www.polarfeet.ca)

Pre-order by January 15, 2021  
Ship dates starting August 1, 2021