



businesswear.com.au

VAN HEUSEN & BRACKS • BUSINESSWEAR CATALOGUE • EDITION 3.2



PVH
BRANDS
AUSTRALIA
BUSINESSWEAR

VAN HEUSEN

 **BRACKS**
SINCE 1956

BUSINESS WEAR CATALOGUE

PVH

BRANDS
AUSTRALIA
BUSINESSWEAR

VAN HEUSEN



BRACKS
SINCE 1956

BUSINESS WEAR CATALOGUE

CONTENTS

4-38	Look smart with Classic Relaxed, Euro Tailored & Slim fit shirting options	BUSINESS SHIRTS
39-63	Dress to impress with Classic Relaxed, Euro Tailored & Contemporary fit tailoring	TAILORED
64-69	Look sharp & relaxed with casual style	CASUAL WEAR
70	Indent orders	SPECIAL MAKES
71-73	How to measure	FITTING GUIDES



MEN'S & WOMEN'S SHIRTS

VAN HEUSEN

STYLE CODE: A101

DESCRIPTION:
Classic Relaxed Fit Shirt

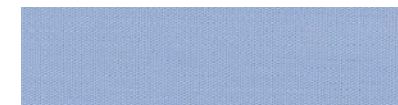
FABRIC & CARE:
65% Polyester/35% Cotton
Solid Dyed Poplin
Warm Machine Wash Easy Care

- FEATURES:**
- Back Double Pleat Detail
 - Peak Collar
 - Duo Cuff
 - Multiple Sleeve Lengths

COLOURS:



White BWHT



Blue BCSB



Black BBLK



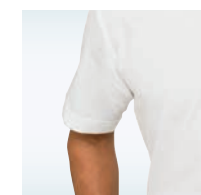
Navy BNVB



CLASSIC RELAXED FIT

ALSO AVAILABLE

STYLE CODE: B101_BWHT



Men's Short Sleeve Shirt
White BWHT only

STYLE CODE A101 – CLASSIC RELAXED FIT LONG SLEEVE SHIRT

	37cm	38cm	39cm	40cm	41cm	42cm	43cm	44cm	46cm	48cm	50cm	52cm	54cm	56cm
NECK CM	37cm	38cm	39cm	40cm	41cm	42cm	43cm	44cm	46cm	48cm	50cm	52cm	54cm	56cm
NECK INCHES	14.5"	15"	15.5"	15.75"	16"	16.5"	17"	17.5"	18"	19"	20"	20.5"	21.5"	22"
NECK SIZE	S	S	M	M	L	L	XL	XL	2XL	3XL	4XL	5XL	6XL	7XL
CHEST CM	108	114	120	122	122	128	136	142	146	151	156	161	166	171
SLEEVE LENGTH														
82cm	✓	•	•	•	•	•	•	•	•	•	•	•	•	•
86cm		✓	✓	✓	✓	✓	•	•	•	•	•	•	•	•
90cm			•	•	•	•	✓	✓	✓	•	•	•	•	•
92cm										✓	✓	✓	✓	✓
94cm					•	•	•	•	•	•	•	•	•	•

STYLE CODE B101 – CLASSIC RELAXED FIT SHORT SLEEVE SHIRT

	37cm	38cm	39cm	40cm	41cm	42cm	43cm	44cm	46cm	48cm	50cm	52cm	54cm	56cm
NECK CM	37cm	38cm	39cm	40cm	41cm	42cm	43cm	44cm	46cm	48cm	50cm	52cm	54cm	56cm
NECK INCHES	14.5"	15"	15.5"	15.75"	16"	16.5"	17"	17.5"	18"	19"	20"	20.5"	21.5"	22"
NECK SIZE	S	S	M	M	L	L	XL	XL	2XL	3XL	4XL	5XL	6XL	7XL
CHEST CM	108	114	120	122	122	128	136	142	146	151	156	161	166	171
SHORT SLEEVE	✓	✓	✓	✓	✓	✓	✓	✓	✓	✓	✓	✓	✓	✓

✓= standard sizing •= also available ◻= not available

STYLE CODE: A103

DESCRIPTION:
Classic Relaxed Fit Shirt

FABRIC & CARE:
70% Cotton/30% Polyester
Dobby Herringbone
Warm Machine Wash Easy Care

- FEATURES:**
- Back Double Pleat Detail
 - Peak Collar
 - Duo Cuff
 - Multiple Sleeve Lengths

COLOURS:



White BWHT



Blue BCSB



Silver BSVR



Navy BNVB



Charcoal BCHY

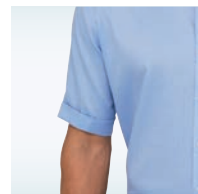


Lilac BLIH



ALSO AVAILABLE

STYLE CODE: B103_BCSB



Men's Short Sleeve Shirt
Blue BCSB only

STYLE CODE: E103_BCSB



Men's Euro Tailored Fit Shirt
Blue BCSB only. Available in neck size 37cm-50cm

STYLE CODE A103 – CLASSIC RELAXED FIT LONG SLEEVE SHIRT

	37cm	38cm	39cm	40cm	41cm	42cm	43cm	44cm	46cm	48cm	50cm	52cm	54cm	56cm
NECK CM	37cm	38cm	39cm	40cm	41cm	42cm	43cm	44cm	46cm	48cm	50cm	52cm	54cm	56cm
NECK INCHES	14.5"	15"	15.5"	15.75"	16"	16.5"	17"	17.5"	18"	19"	20"	20.5"	21.5"	22"
NECK SIZE	S	S	M	M	L	L	XL	XL	2XL	3XL	4XL	5XL	6XL	7XL
CHEST CM	108	114	120	122	122	128	136	142	146	151	156	161	166	171
SLEEVE LENGTH														
82cm	✓	•	•	•	•	•	•	•	•	•	•	•	•	•
86cm		✓	✓	✓	✓	✓	•	•	•	•	•	•	•	•
90cm			•	•	•	•	✓	✓	✓	•	•	•	•	•
92cm									✓	✓	*	*	*	
94cm					•	•	•	•	•	•	•	•	•	•

STYLE CODE B103 – CLASSIC RELAXED FIT SHORT SLEEVE SHIRT

	37cm	38cm	39cm	40cm	41cm	42cm	43cm	44cm	46cm	48cm	50cm
NECK CM	37cm	38cm	39cm	40cm	41cm	42cm	43cm	44cm	46cm	48cm	50cm
NECK INCHES	14.5"	15"	15.5"	15.75"	16"	16.5"	17"	17.5"	18"	19"	20"
NECK SIZE	S	S	M	M	L	L	XL	XL	2XL	3XL	4XL
CHEST CM	108	114	120	122	122	128	136	142	146	151	156
SHORT SLEEVE	✓	✓	✓	✓	✓	✓	✓	✓	✓	✓	✓

✓ = standard sizing • = also available □ = not available * = available in Navy, Blue, Charcoal & Silver only

STYLE CODE: AWL103

DESCRIPTION:
Classic Fit Women's Shirt

FABRIC & CARE:
70% Cotton/30% Polyester
Dobby Herringbone
Warm Machine Wash Easy Care

- FEATURES:**
- Back Dart Detail
 - Peak Collar
 - Square Cuff
 - Standard Sleeve Lengths

COLOURS:



White BWHT



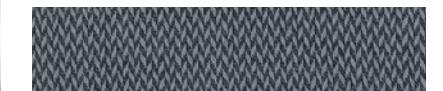
Blue BCSB



Silver BSVR



Navy BNVB



Charcoal BCHY



Lilac BLIH



STYLE CODE AWL103 – WOMEN'S CLASSIC RELAXED FIT LONG SLEEVE SHIRT

	6	8	10	12	14	16	18	20	22	24	26	28
SIZE	6	8	10	12	14	16	18	20	22	24	26	28
CHEST CM	88	93	98	103	108	113	118	123	128	133	138	143
CUP AB	✓	✓	✓	✓	✓	□	□	□	□	□	□	□
CUP CD	□	✓	✓	✓	✓	✓	✓	✓	✓	✓	✓	✓

✓ = standard sizing □ = not available

VAN HEUSEN

STYLE CODE: VFLM81U

DESCRIPTION:
Classic Relaxed Fit Shirt

FABRIC:
60% Cotton/40% Polyester
Mini Herringbone
Warm Machine Wash

FEATURES:
- Back Double Pleat Detail
- Peak Collar
- Duo Cuff
- Multiple Sleeve Lengths

COLOURS:



Sky Blue RSKW



White RWHT



Silver RSVR



VAN HEUSEN

STYLE CODE: AWL81U

DESCRIPTION:
Classic Fit Women's Shirt

FABRIC:
60% Cotton/40% Polyester
Mini Herringbone
Warm Machine Wash Easy Care

FEATURES:
- Back Dart Detail
- Peak Collar
- Square Cuff
- Standard Sleeves

COLOURS:



Sky Blue RSKW



White RWHT



Silver Grey RSVR



ALSO AVAILABLE

STYLE CODE: AWTQ81U



Women's
Three Quarter
Sleeve Shirt
Sky Blue RSKW,
Silver Grey RSVR
& White RWHT

STYLE CODE: AWS81U



Women's
Short Sleeve
Shirt
Sky Blue VSKY
& White VWHT
only

STYLE CODE VFLM81U – CLASSIC RELAXED FIT LONG SLEEVE SHIRT

	37cm	38cm	39cm	40cm	41cm	42cm	43cm	44cm	46cm	48cm	50cm	52cm	54cm	56cm
NECK CM	37cm	38cm	39cm	40cm	41cm	42cm	43cm	44cm	46cm	48cm	50cm	52cm	54cm	56cm
NECK INCHES	14.5"	15"	15.5"	15.75"	16"	16.5"	17"	17.5"	18"	19"	20"	20.5"	21.5"	22"
NECK SIZE	S	S	M	M	L	L	XL	XL	2XL	3XL	4XL	5XL	6XL	7XL
CHEST CM	108	114	120	122	122	128	136	142	146	151	156	161	166	171
SLEEVE LENGTH														
82cm	✓	•	•	•	•	•	•	•	•	•	•	•	•	•
86cm	•	✓	✓	✓	✓	✓	•	•	•	•	•	•	•	•
90cm	•	•	•	•	•	•	✓	✓	✓	•	•	•	•	•
92cm	•	•	•	•	•	•	•	•	•	✓	✓	✓	✓	✓
94cm	•	•	•	•	•	•	•	•	•	•	•	•	•	•

✓= standard sizing •= also available ◻= not available

STYLE CODE AWL81U, AWTQ81U & AWS81U – WOMEN'S CLASSIC RELAXED FIT SHIRT

	6	8	10	12	14	16	18	20	22	24	26	28
SIZE	6	8	10	12	14	16	18	20	22	24	26	28
CHEST CM	88	93	98	103	108	113	118	123	128	133	138	143
WAIST CM	77	82	87	92	97	102	107	112	117	122	127	132
CUP AB	✓	✓	✓	✓	✓	◻	◻	◻	◻	◻	◻	◻
CUP CD	◻	✓	✓	✓	✓	✓	✓	✓	✓	✓	✓	✓

✓= standard sizing ◻= not available

CLASSIC RELAXED FIT

CLASSIC FIT

STYLE CODE: A505
/E505/AS505

DESCRIPTION:
Classic Relaxed/Euro Tailored
/Slim Fit Shirt

FABRIC:
100% Cotton Dobby
Warm Machine Wash

- FEATURES:**
- Back Dart Detail
 - Deep Spread Collar
 - Wide 2 Button Cuff
 - Standard Sleeve Lengths
 - Available in 3 Fits

COLOURS:



White BWHT



STYLE CODE A505 - CLASSIC RELAXED FIT LONG SLEEVE SHIRT

NECK CM	37cm	38cm	39cm	40cm	41cm	42cm	43cm	44cm	46cm	48cm	50cm	52cm	54cm	56cm
NECK INCHES	14.5"	15"	15.5"	15.75"	16"	16.5"	17"	17.5"	18"	19"	20"	20.5"	21.5"	22"
CHEST CM	108	114	120	122	122	128	136	142	146	151	156	161	166	171
WAIST CM	98	105	110	113	113	118	129	132	142	148	154	149	164	169

SLEEVE LENGTH	82cm	86cm	90cm	92cm	94cm
82cm	✓	•	•	•	•
86cm		✓	✓	✓	✓
90cm			•	•	•
92cm					
94cm					

STYLE CODE E505 - EURO TAILORED FIT LONG SLEEVE SHIRT

NECK CM	37cm	38cm	39cm	40cm	41cm	42cm	43cm	44cm	46cm	48cm	50cm
NECK INCHES	14.5"	15"	15.5"	15.75"	16"	16.5"	17"	17.5"	18"	19"	20"
NECK SIZE	S	S	M	M	L	L	XL	XL	2XL	3XL	4XL
CHEST CM	100	104	108	112	114	118	124	130	136	140	144

SLEEVE LENGTH	82cm	86cm	90cm	92cm
82cm	✓			
86cm		✓	✓	✓
90cm			•	✓
92cm				

STYLE CODE AS505 - SLIM FIT LONG SLEEVE SHIRT

NECK SIZE	S	M	L	XL	XXL
NECK CM	37-38cm	39-40cm	41-42cm	43-44cm	46cm
CHEST CM	98	106	114	122	130

SLEEVE LENGTH	82cm	86cm	90cm
82cm	✓		
86cm		✓	
90cm			✓

✓ = standard sizing • = also available □ = not available

STYLE CODE: E148

DESCRIPTION: Euro Tailored Fit Shirt

FABRIC:
60% Cotton/40% Polyester
Mini Herringbone
Warm Machine Wash

- FEATURES:**
- Single Back Dart Detail
 - Spread Collar
 - Wide 2 Button Cuff
 - Standard Sleeve Length

STYLE CODE: AWL148

DESCRIPTION:
Classic Fit Women's Shirt

FABRIC:
60% Cotton/40% Polyester
Mini Herringbone
Warm Machine Wash

- FEATURES:**
- Peak Collar
 - Buttoned Square Cuff
 - Back Dart Detail
 - Standard Sleeve Lengths
 - Identical to fabric 81U on pages 8 and 9

COLOURS:



Sky Blue RSKW (E148 only)



White RWHT (E148 only)



Navy RNVB



STYLE CODE E148 - EURO TAILORED FIT LONG SLEEVE SHIRT

NECK CM	37cm	38cm	39cm	40cm	41cm	42cm	43cm	44cm	46cm	48cm	50cm	52cm
NECK INCHES	14.5"	15"	15.5"	15.75"	16"	16.5"	17"	17.5"	18"	19"	20"	21"
NECK SIZE	S	S	M	M	L	L	XL	XL	2XL	3XL	4XL	5XL
CHEST CM	100	104	108	112	114	118	124	130	136	140	144	148

SLEEVE LENGTH	82cm	86cm	90cm	92cm
82cm	✓			
86cm		✓	✓	✓
90cm			✓	✓
92cm				✓

STYLE CODE AWL148 - WOMEN'S CLASSIC FIT LONG SLEEVE SHIRT

SIZE	6	8	10	12	14	16	18	20	22	24	26	28
CHEST CM	88	93	98	103	108	113	118	123	128	133	138	143
CUP AB	•	•	•	•	•	•	•	•	•	•	•	•
CUP CD	□	•	•	•	•	•	•	•	•	•	•	•

✓ = standard sizing • = available in navy only □ = not available

VAN HEUSEN

STYLE CODE: EB500

DESCRIPTION:
Euro Tailored Fit Shirt

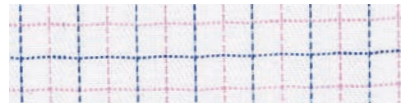
FABRIC:
100% Premium Cotton
Warm Machine Wash

- FEATURES:**
- Double Back Dart Detail
 - Deep Spread Collar
 - Mitred Cuff
 - Silk Collar Trim
 - VH Logo & Button Contrast on Cuff
 - Standard Sleeve Lengths

COLOURS:



Navy/Green CNVB



Pink/Navy CPCP



STYLE CODE EB500 - EURO TAILORED FIT LONG SLEEVE SHIRT

	37cm	38cm	39cm	40cm	41cm	42cm	43cm	44cm	46cm	48cm	50cm	52cm
NECK CM	37cm	38cm	39cm	40cm	41cm	42cm	43cm	44cm	46cm	48cm	50cm	52cm
NECK INCHES	14.5"	15"	15.5"	15.75"	16"	16.5"	17"	17.5"	18"	19"	20"	21"
NECK SIZE	S	S	M	M	L	L	XL	XL	2XL	3XL	4XL	5XL
CHEST CM	100	104	108	112	114	118	124	130	136	140	144	148
SLEEVE LENGTH												
82cm	✓											
86cm		✓	✓	✓								
90cm					✓	✓	✓	✓	✓			
92cm										✓	✓	✓

✓ = standard sizing □ = not available

VAN HEUSEN

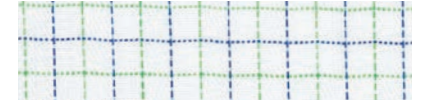
STYLE CODE: AWLB500

DESCRIPTION:
Classic Fit Women's Shirt

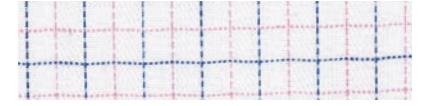
FABRIC:
100% Premium Cotton
Warm Machine Wash

- FEATURES:**
- Back Dart Detail
 - Classic Collar
 - Buttoned Square Cuff
 - Silk Collar Trim
 - VH Logo & Button Contrast on Cuff
 - Standard Sleeve Lengths

COLOURS:



Navy/Green CNVB



Pink/Navy CPCP



STYLE CODE AWLB500 - WOMEN'S CLASSIC FIT SHIRT

	6	8	10	12	14	16	18	20	22	24	26	28
SIZE	6	8	10	12	14	16	18	20	22	24	26	28
CHEST CM	88	93	98	103	108	113	118	123	128	133	138	143
CUP AB	✓	✓	✓	✓	✓							
CUP CD		✓	✓	✓	✓	✓	✓	✓	✓	✓	✓	✓

✓ = standard sizing □ = not available

VAN HEUSEN

STYLE CODE: EB501

DESCRIPTION:
Euro Tailored Fit Shirt

FABRIC:
100% Premium Cotton
Warm Machine Wash

- FEATURES:**
- Double Back Dart Detail
 - Deep Spread Collar
 - Mitred Cuff
 - Silk Collar Trim
 - VH Logo & Button Contrast on Cuff
 - Standard Sleeve Lengths

COLOURS:



Red VRED



Navy VNVB



STYLE CODE EB501 - EURO TAILORED FIT LONG SLEEVE SHIRT

	37cm	38cm	39cm	40cm	41cm	42cm	43cm	44cm	46cm	48cm	50cm	52cm
NECK CM	37cm	38cm	39cm	40cm	41cm	42cm	43cm	44cm	46cm	48cm	50cm	52cm
NECK INCHES	14.5"	15"	15.5"	15.75"	16"	16.5"	17"	17.5"	18"	19"	20"	21"
NECK SIZE	S	S	M	M	L	L	XL	XL	2XL	3XL	4XL	5XL
CHEST CM	100	104	108	112	114	118	124	130	136	140	144	148
SLEEVE LENGTH												
82cm	✓											
86cm		✓	✓	✓								
90cm					✓	✓	✓	✓	✓			
92cm										✓	✓	✓

✓ = standard sizing □ = not available

VAN HEUSEN

STYLE CODE: AWLB501

DESCRIPTION:
Classic Fit Women's Shirt

FABRIC:
100% Premium Cotton
Warm Machine Wash

- FEATURES:**
- Back Dart Detail
 - Classic Collar
 - Buttoned Square Cuff
 - Silk Collar Trim
 - Standard Sleeve Lengths
 - VH Logo & Button Contrast on Cuff

COLOURS:



Red VRED



Navy VNVB



STYLE CODE AWLB501 - WOMEN'S CLASSIC FIT LONG SLEEVE SHIRT

	6	8	10	12	14	16	18	20	22	24	26	28
SIZE	6	8	10	12	14	16	18	20	22	24	26	28
CHEST CM	88	93	98	103	108	113	118	123	128	133	138	143
CUP AB	✓	✓	✓	✓	✓							
CUP CD		✓	✓	✓	✓	✓	✓	✓	✓	✓	✓	✓

✓ = standard sizing □ = not available

VAN HEUSEN

STYLE CODE: EB503

DESCRIPTION:
Euro Tailored Fit Shirt

FABRIC:
100% Denim Cotton
Warm Machine Wash

- FEATURES:**
- Double Back Dart Detail
 - Deep Spread Collar
 - Mitred Cuff
 - Silk Collar Trim
 - Standard Sleeve Lengths
 - VH Logo & Button Contrast on Cuff

COLOURS:



Denim BIND



EURO TAILORED FIT

VAN HEUSEN

STYLE CODE: AWLB503

DESCRIPTION:
Classic Fit Women's Shirt

FABRIC:
100% Denim Cotton
Warm Machine Wash

- FEATURES:**
- Back Dart Detail
 - Classic Collar
 - Buttoned Square Cuff
 - Standard Sleeve Lengths
 - VH Logo & Button Contrast on Cuff

COLOURS:



Denim BIND



CLASSIC FIT

STYLE CODE EB503 - EURO TAILORED FIT LONG SLEEVE SHIRT

	37cm	38cm	39cm	40cm	41cm	42cm	43cm	44cm	46cm	48cm	50cm	52cm
NECK CM	37cm	38cm	39cm	40cm	41cm	42cm	43cm	44cm	46cm	48cm	50cm	52cm
NECK INCHES	14.5"	15"	15.5"	15.75"	16"	16.5"	17"	17.5"	18"	19"	20"	21"
NECK SIZE	S	S	M	M	L	L	XL	XL	2XL	3XL	4XL	5XL
CHEST CM	100	104	108	112	114	118	124	130	136	140	144	148
SLEEVE LENGTH	82cm	86cm	90cm	92cm								
	✓											
		✓	✓	✓								
					✓	✓	✓	✓	✓			
										✓	✓	✓

✓ = standard sizing □ = not available

STYLE CODE AWLB503 - WOMEN'S CLASSIC FIT LONG SLEEVE SHIRT

	6	8	10	12	14	16	18	20	22	24	26	28
SIZE	6	8	10	12	14	16	18	20	22	24	26	28
CHEST	88	93	98	103	108	113	118	123	128	133	138	143
CUP AB	✓	✓	✓	✓	✓							
CUP CD		✓	✓	✓	✓	✓	✓	✓	✓	✓	✓	✓

✓ = standard sizing □ = not available

VAN HEUSEN

STYLE CODE: EB504

DESCRIPTION:
Euro Tailored Fit Shirt

FABRIC:
100% Premium Cotton
Warm Machine Wash

- FEATURES:**
- Double Back Dart Detail
 - Deep Spread Collar
 - Mitred Cuff
 - Silk Collar Trim
 - VH Logo & Button Contrast on Cuff
 - Standard Sleeve Lengths

COLOURS:



Navy CNVB



STYLE CODE EB504 - EURO TAILORED FIT LONG SLEEVE SHIRT

	37cm	38cm	39cm	40cm	41cm	42cm	43cm	44cm	46cm	48cm	50cm	52cm
NECK CM	37cm	38cm	39cm	40cm	41cm	42cm	43cm	44cm	46cm	48cm	50cm	52cm
NECK INCHES	14.5"	15"	15.5"	15.75"	16"	16.5"	17"	17.5"	18"	19"	20"	21"
NECK SIZE	S	S	M	M	L	L	XL	XL	2XL	3XL	4XL	5XL
CHEST CM	100	104	108	112	114	118	124	130	136	140	144	148
SLEEVE LENGTH	82cm	✓										
	86cm		✓	✓	✓							
	90cm				✓	✓	✓	✓	✓			
	92cm									✓	✓	✓

✓ = standard sizing □ = not available

VAN HEUSEN

STYLE CODE: AWLB504

DESCRIPTION:
Classic Fit Women's Shirt

FABRIC:
100% Premium Cotton
Warm Machine Wash

- FEATURES:**
- Back Dart Detail
 - Classic Collar
 - Buttoned Square Cuff
 - Silk Collar Trim
 - VH Logo & Button Contrast on Cuff
 - Standard Sleeve Lengths

COLOURS:



Navy CNVB



STYLE CODE AWLB504 - WOMEN'S CLASSIC FIT LONG SLEEVE SHIRT

	6	8	10	12	14	16	18	20	22	24	26	28
SIZE	6	8	10	12	14	16	18	20	22	24	26	28
CHEST CM	88	93	98	103	108	113	118	123	128	133	138	143
CUP AB	✓	✓	✓	✓	✓							
CUP CD		✓	✓	✓	✓	✓	✓	✓	✓	✓	✓	✓

✓ = standard sizing □ = not available

VAN HEUSEN

STYLE CODE: E101

DESCRIPTION:
Euro Tailored Fit Shirt

FABRIC:
60% Cotton/40% Polyester
Solid Dyed Poplin
Warm Machine Wash Easy Care

- FEATURES:**
- Double Back Pleat Detail
 - Semi Spread Collar
 - Wide 2 Button Cuff
 - Standard Sleeve Lengths

COLOURS:



Black BBLK



White BWHT



EURO TAILORED FIT

STYLE CODE E101 - EURO TAILORED FIT LONG SLEEVE SHIRT

	37cm	38cm	39cm	40cm	41cm	42cm	43cm	44cm	46cm	48cm	50cm
NECK CM	37cm	38cm	39cm	40cm	41cm	42cm	43cm	44cm	46cm	48cm	50cm
NECK INCHES	14.5"	15"	15.5"	15.75"	16"	16.5"	17"	17.5"	18"	19"	20"
NECK SIZE	S	S	M	M	L	L	XL	XL	2XL	3XL	4XL
CHEST CM	100	104	108	112	114	118	124	130	136	140	144
SLEEVE LENGTH	82cm	✓									
	86cm		✓	✓	✓						
	90cm					✓	✓	✓	✓	✓	
	92cm									✓	✓

✓ = standard sizing □ = not available

VAN HEUSEN

STYLE CODE: AWLE101

DESCRIPTION:
Classic Fit Women's Shirt

FABRIC:
60% Cotton/40% Polyester
Solid Dyed Poplin
Warm Machine Wash Easy Care

- FEATURES:**
- Back Dart Detail
 - Peak Collar
 - Square Cuff
 - Standard Sleeve Lengths

COLOURS:



Black BBLK



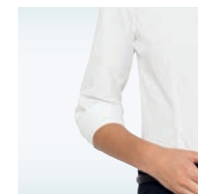
White BWHT



CLASSIC FIT

ALSO AVAILABLE

STYLE CODE: AWTQE101



Women's Three Quarter Sleeve Shirt
Black BBLK & White BWHT

STYLE CODE: AWSE101



Women's Short Sleeve Shirt
Black BBLK & White BWHT

STYLE CODE AWLE101, AWTQE101 & AWSE101 - WOMEN'S CLASSIC FIT SHIRT

SIZE	6	8	10	12	14	16	18	20	22	24	26	28
CHEST CM	88	93	98	103	108	113	118	123	128	133	138	143
CUP AB	✓	✓	✓	✓	✓							
CUP CD		✓	✓	✓	✓	✓	✓	✓	✓	✓	✓	✓

✓ = standard sizing □ = not available

VAN HEUSEN

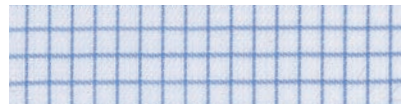
STYLE CODE: E155

DESCRIPTION:
Euro Tailored Fit Shirt

FABRIC:
60% Cotton/40% Polyester
Yarn Dyed Check
Warm Machine Wash Easy Care

FEATURES:
- Spread Collar
- Duo Cuff
- Back Single Pleats
- Standard Sleeve Lengths

COLOURS:



Blue CCSB



Pink CPCP



VAN HEUSEN

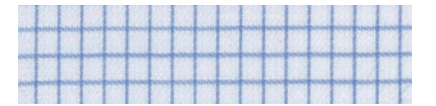
STYLE CODE: AWL155

DESCRIPTION:
Classic Fit Women's Shirt

FABRIC:
60% Cotton/40% Polyester
Yarn Dyed Check
Warm Machine Wash Easy Care

FEATURES:
- Back Dart Detail
- Peak Collar
- Square Cuff
- Standard Sleeve Lengths

COLOURS:



Blue CCSB



Pink CPCP



EURO TAILORED FIT

CLASSIC FIT

STYLE CODE E155 - EURO TAILORED FIT LONG SLEEVE SHIRT

	37cm	38cm	39cm	40cm	41cm	42cm	43cm	44cm	46cm	48cm	50cm	52cm
NECK CM	37cm	38cm	39cm	40cm	41cm	42cm	43cm	44cm	46cm	48cm	50cm	52cm
NECK INCHES	14.5"	15"	15.5"	15.75"	16"	16.5"	17"	17.5"	18"	19"	20"	21"
NECK SIZE	S	S	M	M	L	L	XL	XL	2XL	3XL	4XL	5XL
CHEST CM	100	104	108	112	114	118	124	130	136	140	144	148
SLEEVE LENGTH												
82cm	✓											
86cm		✓	✓	✓	✓	•						
90cm					•	✓	✓	✓	✓			
92cm										✓	✓	✓

✓ = standard sizing □ = not available • = also available

STYLE CODE AWL155 - WOMEN'S CLASSIC FIT LONG SLEEVE SHIRT

	6	8	10	12	14	16	18	20	22	24	26	28
SIZE	6	8	10	12	14	16	18	20	22	24	26	28
CHEST CM	88	93	98	103	108	113	118	123	128	133	138	143
CUP AB	✓	✓	✓	✓	✓							
CUP CD		✓	✓	✓	✓	✓	✓	✓	✓	✓	✓	✓

✓ = standard sizing □ = not available

VAN HEUSEN

STYLE CODE: E160

DESCRIPTION:
Euro Tailored Fit Shirt

FABRIC:
60% Cotton/40% Polyester
Yarn Dyed Stripe
Warm Machine Wash Easy Care

- FEATURES:**
- Single Back Pleat Detail
 - Semi Spread Collar
 - Wide 2 Button Cuff
 - Standard Sleeve Lengths

COLOURS:



Black VBLK



Blue VCSB



STYLE CODE E160 - EURO TAILORED FIT LONG SLEEVE SHIRT

	37cm	38cm	39cm	40cm	41cm	42cm	43cm	44cm	46cm	48cm	50cm	52cm
NECK CM	37cm	38cm	39cm	40cm	41cm	42cm	43cm	44cm	46cm	48cm	50cm	52cm
NECK INCHES	14.5"	15"	15.5"	15.75"	16"	16.5"	17"	17.5"	18"	19"	20"	21"
NECK SIZE	S	S	M	M	L	L	XL	XL	2XL	3XL	4XL	5XL
CHEST CM	100	104	108	112	114	118	124	130	136	140	144	148
SLEEVE LENGTH	82cm	✓										
	86cm		✓	✓	✓							
	90cm				✓	✓	✓	✓	✓			
	92cm									✓	✓	✓

✓ = standard sizing □ = not available

VAN HEUSEN

STYLE CODE: AWL160

DESCRIPTION:
Classic Fit Women's Shirt

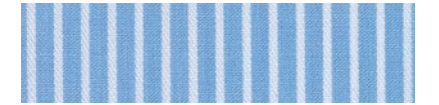
FABRIC:
60% Cotton/40% Polyester
Yarn Dyed Stripe
Warm Machine Wash Easy Care

- FEATURES:**
- Back Dart Detail
 - Peak Collar
 - Square Cuff
 - Standard Sleeve Lengths

COLOURS:



Black VBLK



Blue VCSB



STYLE CODE AWL160 - WOMEN'S CLASSIC FIT LONG SLEEVE SHIRT

	6	8	10	12	14	16	18	20	22	24	26	28
SIZE	6	8	10	12	14	16	18	20	22	24	26	28
CHEST CM	88	93	98	103	108	113	118	123	128	133	138	143
CUP AB	✓	✓	✓	✓	✓							
CUP CD		✓	✓	✓	✓	✓	✓	✓	✓	✓	✓	✓

✓ = standard sizing □ = not available

VAN HEUSEN

STYLE CODE: E169

DESCRIPTION:
Euro Tailored Fit Shirt

FABRIC:
60% Cotton/40% Polyester
Yarn Dyed Check
Warm Machine Wash

- FEATURES:**
- Double Back Dart Detail
 - Deep Spread Collar
 - Mitred Cuff
 - Silk Collar Trim
 - VH Logo & Button Contrast on Cuff
 - Standard Sleeve Lengths

COLOURS:



Green CGRN



Blue CCSB



Grape CGRP



Grey Mist CGRM



STYLE CODE E169 - EURO TAILORED FIT LONG SLEEVE SHIRT

	37cm	38cm	39cm	40cm	41cm	42cm	43cm	44cm	46cm	48cm	50cm	52cm
NECK CM	37cm	38cm	39cm	40cm	41cm	42cm	43cm	44cm	46cm	48cm	50cm	52cm
NECK INCHES	14.5"	15"	15.5"	15.75"	16"	16.5"	17"	17.5"	18"	19"	20"	21"
NECK SIZE	S	S	M	M	L	L	XL	XL	2XL	3XL	4XL	5XL
CHEST CM	100	104	108	112	114	118	124	130	136	140	144	148
SLEEVE LENGTH	82cm	✓										
	86cm		✓	✓	✓							
	90cm				✓	✓	✓	✓	✓			
	92cm									✓	✓	✓

✓= standard sizing □= not available

VAN HEUSEN

STYLE CODE: AWL169

DESCRIPTION:
Classic Fit Women's Shirt

FABRIC:
60% Cotton/40% Polyester
Yarn Dyed Check
Warm Machine Wash

- FEATURES:**
- Back Dart Detail
 - Peak Collar
 - Buttoned Square Cuff
 - Silk Collar Trim
 - VH Logo & Button Contrast on Cuff
 - Standard Sleeve Lengths

COLOURS:



Green CGRN



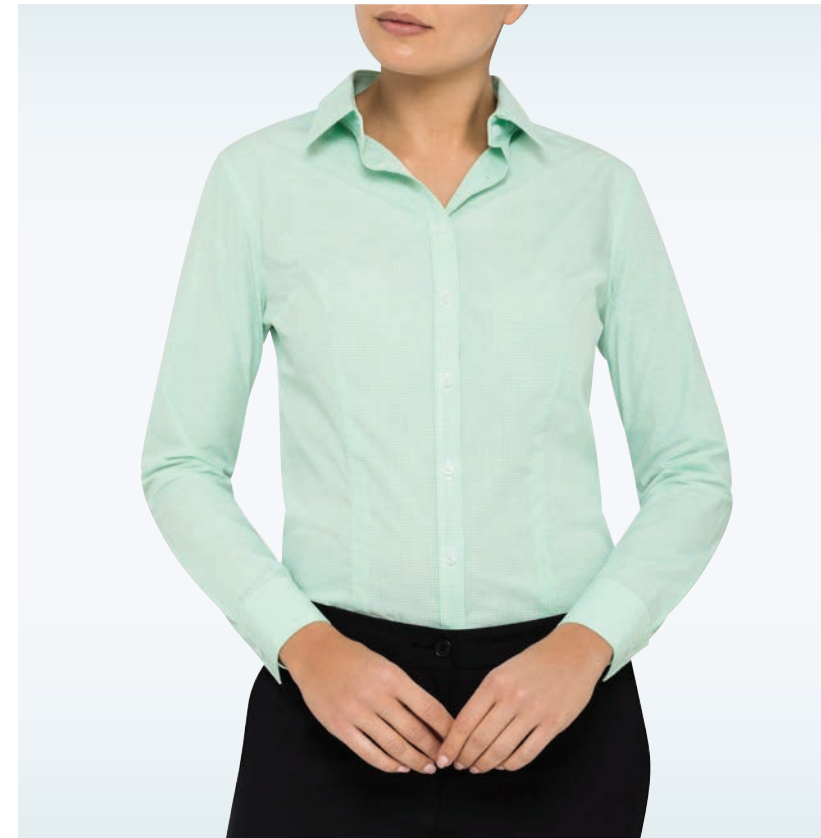
Blue CCSB



Grape CGRP



Grey Mist CGRM



STYLE CODE AWL169 - WOMEN'S CLASSIC FIT LONG SLEEVE SHIRT

	6	8	10	12	14	16	18	20	22	24	26	28
SIZE	6	8	10	12	14	16	18	20	22	24	26	28
CHEST CM	88	93	98	103	108	113	118	123	128	133	138	143
CUP AB	✓	✓	✓	✓	✓							
CUP CD		✓	✓	✓	✓	✓	✓	✓	✓	✓	✓	✓

✓= standard sizing □= not available

VAN HEUSEN

STYLE CODE: E161

DESCRIPTION:
Euro Tailored Fit Shirt

FABRIC:
60% Cotton/40% Polyester
Yarn Dyed Check
Warm Machine Wash

- FEATURES:**
- Single Back Pleat Detail
 - Semi Spread Collar
 - Wide 2 Button Cuff
 - Standard Sleeve Lengths
 - Contrast Solid Placket and Inside Collar

COLOURS:



Burgundy CBGY



Charcoal CCHY



Navy CNVB



STYLE CODE E161 - EURO TAILORED FIT LONG SLEEVE SHIRT

	37cm	38cm	39cm	40cm	41cm	42cm	43cm	44cm	46cm	48cm	50cm	52cm
NECK CM	37cm	38cm	39cm	40cm	41cm	42cm	43cm	44cm	46cm	48cm	50cm	52cm
NECK INCHES	14.5"	15"	15.5"	15.75"	16"	16.5"	17"	17.5"	18"	19"	20"	21"
NECK SIZE	S	S	M	M	L	L	XL	XL	2XL	3XL	4XL	5XL
CHEST CM	100	104	108	112	114	118	124	130	136	140	144	148
SLEEVE LENGTH												
82cm	✓											
86cm		✓	✓	✓								
90cm					✓	✓	✓	✓	✓			
92cm										✓	✓	✓

✓ = standard sizing □ = not available

VAN HEUSEN

STYLE CODE: AWL161

DESCRIPTION:
Classic Fit Women's Shirt

FABRIC:
60% Cotton/40% Polyester
Yarn Dyed Check
Warm Machine Wash

- FEATURES:**
- Back Dart Detail
 - Peak Collar
 - Buttoned Square Cuff
 - Standard Sleeves
 - Contrast Solid Placket and Inside Collar

COLOURS:



Burgundy CBGY



Charcoal CCHY



Navy CNVB



STYLE CODE AWL161 - WOMEN'S CLASSIC FIT LONG SLEEVE SHIRT

	6	8	10	12	14	16	18	20	22	24	26	28
SIZE	6	8	10	12	14	16	18	20	22	24	26	28
CHEST CM	88	93	98	103	108	113	118	123	128	133	138	143
CUP AB	✓	✓	✓	✓	✓							
CUP CD		✓	✓	✓	✓	✓	✓	✓	✓	✓	✓	✓

✓ = standard sizing □ = not available

VAN HEUSEN

STYLE CODE: E104

DESCRIPTION:
Euro Tailored Fit Shirt

FABRIC:
60% Cotton/40% Polyester
Solid Dyed Poplin
Warm Machine Wash

- FEATURES:**
- Single Back Pleat Detail
 - Spread Collar
 - Duo Cuff
 - Standard Sleeve Lengths

STYLE CODE: AWLE104

DESCRIPTION: Classic Fit
Women's Shirt

FABRIC:
60% Cotton/40% Polyester
Solid Dyed Poplin
Warm Machine Wash

- FEATURES:**
- Back Dart Detail
 - Peak Collar
 - Buttoned Square Cuff
 - Standard Sleeve Lengths

COLOURS:



Ivory B1VC



STYLE CODE E104 - EURO TAILORED FIT LONG SLEEVE SHIRT

NECK CM	37cm	38cm	39cm	40cm	41cm	42cm	43cm	44cm	46cm	48cm	50cm	52cm
NECK INCHES	14.5"	15"	15.5"	15.75"	16"	16.5"	17"	17.5"	18"	19"	20"	21"
NECK SIZE	S	S	M	M	L	L	XL	XL	2XL	3XL	4XL	5XL
CHEST CM	100	104	108	112	114	118	124	130	136	140	144	148
SLEEVE LENGTH	82cm	✓										
	86cm		✓	✓	✓							
	90cm					✓	✓	✓	✓	✓		
	92cm									✓	✓	✓

STYLE CODE AWLE104 - WOMEN'S CLASSIC FIT LONG SLEEVE SHIRT

SIZE	6	8	10	12	14	16	18	20	22	24	26	28
CHEST CM	88	93	98	103	108	113	118	123	128	133	138	143
CUP AB	✓	✓	✓	✓	✓							
CUP CD		✓	✓	✓	✓	✓	✓	✓	✓	✓	✓	✓

✓ = standard sizing □ = not available

VAN HEUSEN

STYLE CODE: E154

DESCRIPTION:
Euro Tailored Fit Shirt

FABRIC:
100% Cotton
Solid Dyed Poplin
Cold Machine Wash Easy Care

- FEATURES:**
- Single Back Pleat Detail
 - Spread Collar
 - French Cuff
 - Standard Sleeve Lengths

COLOURS:



White BWHT



STYLE CODE E154 - EURO TAILORED FIT LONG SLEEVE SHIRT

NECK CM	37cm	38cm	39cm	40cm	41cm	42cm	43cm	44cm	46cm	48cm	50cm
NECK INCHES	14.5"	15"	15.5"	15.75"	16"	16.5"	17"	17.5"	18"	19"	20"
NECK SIZE	S	S	M	M	L	L	XL	XL	2XL	3XL	4XL
CHEST CM	100	104	108	112	114	118	124	130	136	140	144
SLEEVE LENGTH	82cm	✓									
	86cm		✓	✓	✓	✓	•				
	90cm					•	✓	✓	✓	✓	
	92cm										✓

✓ = standard sizing □ = not available • = also available

VAN HEUSEN

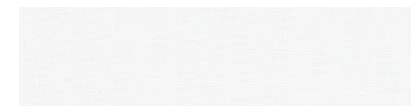
STYLE CODE: E152

DESCRIPTION:
Euro Tailored Fit Dinner Shirt

FABRIC:
60% Cotton/40% Polyester
Machine Wash

- FEATURES:**
- Single Back Pleat Detail
 - Swiss Pleat Front
 - Peak Collar
 - French Cuff
 - Standard Sleeve Lengths

COLOURS:



White BWHT



STYLE CODE E152 - EURO TAILORED FIT LONG SLEEVE SHIRT

	37cm	38cm	39cm	40cm	41cm	42cm	43cm	44cm	46cm	48cm	50cm	52cm
NECK CM	37cm	38cm	39cm	40cm	41cm	42cm	43cm	44cm	46cm	48cm	50cm	52cm
NECK INCHES	14.5"	15"	15.5"	15.75"	16"	16.5"	17"	17.5"	18"	19"	20"	21"
NECK SIZE	S	S	M	M	L	L	XL	XL	2XL	3XL	4XL	5XL
CHEST CM	100	104	108	112	114	118	124	130	136	140	144	148
SLEEVE LENGTH												
82cm	✓											
86cm		✓	✓	✓								
90cm					✓	✓	✓	✓	✓			
92cm										✓	✓	✓
94cm					✓	✓	✓	✓				

✓ = standard sizing □ = not available

VAN HEUSEN

STYLE CODE: EB502

DESCRIPTION:
Euro Tailored Fit Shirt

FABRIC:
100% Premium Oxford Cotton
Warm Machine Wash

- FEATURES:**
- Double Back Dart Detail
 - Deep Spread Collar
 - Mitred Cuff
 - Silk Collar Trim
 - VH Logo & Button Contrast on Cuff
 - Standard Sleeve Lengths

COLOURS:



White BWHT



STYLE CODE EB502 - EURO TAILORED FIT LONG SLEEVE SHIRT

	37cm	38cm	39cm	40cm	41cm	42cm	43cm	44cm	46cm	48cm	50cm	52cm
NECK CM	37cm	38cm	39cm	40cm	41cm	42cm	43cm	44cm	46cm	48cm	50cm	52cm
NECK INCHES	14.5"	15"	15.5"	15.75"	16"	16.5"	17"	17.5"	18"	19"	20"	21"
NECK SIZE	S	S	M	M	L	L	XL	XL	2XL	3XL	4XL	5XL
CHEST CM	100	104	108	112	114	118	124	130	136	140	144	148
SLEEVE LENGTH												
82cm	✓											
86cm		✓	✓	✓								
90cm					✓	✓	✓	✓	✓			
92cm										✓	✓	✓

✓ = standard sizing □ = not available

VAN HEUSEN

STYLE CODE: AS200

DESCRIPTION:
Slim Fit Shirt

FABRIC:
97% Cotton/3% Elastane
Poplin Stretch
Warm Machine Wash Easy Care

FEATURES:
- Back Dart Detail
- Semi Spread Collar
- Mitred Cuff
- Standard Sleeve Lengths

COLOURS:



White BWHT



Black BBLK



SLIM FIT

STYLE CODE AS200 – SLIM FIT LONG SLEEVE SHIRT

SIZE	S	M	L	XL	XXL
NECK CM	37-38cm	39-40cm	41-42cm	43-44cm	46cm
CHEST CM	98	106	114	122	130
SLEEVE LENGTH	82cm	✓			
	86cm		✓		
	90cm			✓	✓

✓ = standard sizing □ = not available

VAN HEUSEN

STYLE CODE: AWL200

DESCRIPTION:
Classic Fit Women's Shirt

FABRIC:
97% Cotton/3% Elastane
Poplin Stretch
Warm Machine Wash Easy Care

FEATURES:
- Peak Collar
- Mitred Cuff
- Back Dart Detail
- Standard Sleeves

COLOURS:



White BWHT



Black BBLK



CLASSIC FIT

ALSO AVAILABLE

STYLE CODE: AWS200



Women's Short Sleeve Shirt
White BWHT & Black BBLK

STYLE CODE AWL200 & AWS200 – WOMEN'S CLASSIC FIT LONG SLEEVE SHIRT

SIZE	6	8	10	12	14	16	18	20	22	24	26	28
CHEST CM	88	93	98	103	108	113	118	123	128	133	138	143
CUP AB	✓	✓	✓	✓	✓							
CUP CD		✓	✓	✓	✓	✓	✓	✓	✓	✓	✓	✓

✓ = standard sizing □ = not available

VAN HEUSEN

STYLE CODE: VHKS386

DESCRIPTION:
Relaxed Fit Women's Jersey Top

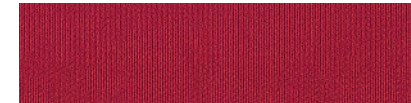
FABRIC:
100% Polyester
Machine Wash

- FEATURES:**
- Front Pleats
 - V-Neck
 - Short Sleeves
 - Jersey Knit Fabric

COLOURS:



Ivory BIVC



Red BRED



Black BBLK



Cobalt BBCB



STYLE CODE VHKS386 – WOMEN'S CLASSIC FIT JERSEY TOP

SIZE	XS	S	M	L	XL	2XL	3XL	4XL	5XL	6XL	7XL	8XL
HALF CHEST CM	44	47	50	53	56	59	62	64	68	71	74	77
SLEEVE LENGTH CM	17	18	19	20	21	22	23	24	25	26	27	28
	✓	✓	✓	✓	✓	✓	✓	✓	✓	✓	✓	✓

✓ = standard sizing

VAN HEUSEN

STYLE CODE: VHKS400

DESCRIPTION:
Relaxed Fit Women's Top

FABRIC:
98% Polyester/2% Elastane
Machine Wash

- FEATURES:**
- Front Pleats
 - Round Neck
 - Short Sleeves
 - Lightweight Fabric
 - Soft Hand Feel

COLOURS:



Off White BWHT



Dusty Pink BPNN



Airforce Blue BCSB



STYLE CODE VHKS400 – WOMEN'S RELAXED FIT TOP

SIZE	XS	S	M	L	XL	2XL	3XL	4XL	5XL	6XL	7XL	8XL
HALF CHEST CM	44	47	50	53	56	59	62	64	68	71	74	77
SLEEVE LENGTH CM	17	18	19	20	21	22	23	24	25	26	27	28
	✓	✓	✓	✓	✓	✓	✓	✓	✓	✓	✓	✓

✓ = standard sizing

VAN HEUSEN

STYLE CODE: VHKS401

DESCRIPTION:
Relaxed Fit Women's Top

FABRIC:
98% Polyester/2% Elastane
Machine Wash

- FEATURES:**
- 3/4 Button Down Front
 - Stand Collar
 - 3/4 sleeves
 - Lightweight Fabric
 - Soft Hand Feel
 - 2 Button Cuff
 - Button Up Sleeve Tab

COLOURS:



Forest Green BGRN



Navy BNVB



Black BBLK



TAILORING

STYLE CODE VHKS401 – WOMEN'S RELAXED FIT TOP

SIZE	XS	S	M	L	XL	2XL	3XL	4XL	5XL	6XL	7XL	8XL
SIZE	6	8	10	12	14	16	18	20	22	24	26	28
HALF CHEST CM	44	47	50	53	56	59	62	64	68	71	74	77
SLEEVE LENGTH CM	17	18	19	20	21	22	23	24	25	26	27	28

✓ = standard sizing

VAN HEUSEN

STYLE CODE: BVCJM08

DESCRIPTION:
Classic Relaxed Single Breasted Jacket

FABRIC:
67% Polyester/30% Wool/3% Elastane
Dry Clean

JACKET FEATURES:

- Stout/Regular/Long Lengths
- 2 Button
- Single Breasted
- Flap Pockets
- Double Vent

STYLE CODE: BVCTM08

DESCRIPTION:
Classic Relaxed Flat Front Trousers

FABRIC:
67% Polyester/30% Wool/3% Elastane
Machine Washable

TROUSER FEATURES:

- Regular Lengths
- Flat Front
- Front Slant Pockets
- 2 Double Welt Back Pockets

COLOURS:



Black BBLK



Charcoal BCCG

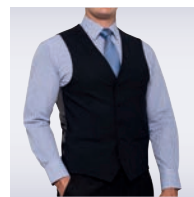


Navy BNVB



ALSO AVAILABLE

STYLE CODE: BVCV08



Unisex Classic Style Vest
Black BBLK only

STYLE CODE BVCJM08 – CLASSIC RELAXED FIT JACKET

SIZE	88	92	96	100	104	108	112	116	120	124	128	132	136	140	144	148	152
Stout				✓	✓	✓	✓	✓									
Regular	✓	✓	✓	✓	✓	✓	✓	✓	✓	✓	✓	•	•	•	•	•	•
Long					✓	✓	✓										

STYLE CODE BVCTM08 – CLASSIC RELAXED FIT TROUSER

SIZE	76	80	84	88	92	96	100	104	108	112	116	120	124	128	132	
Regular	✓	✓	✓	✓	✓	✓	✓	✓	✓	✓	✓	✓	✓	✓	✓	✓

STYLE CODE BVCV08 – CLASSIC RELAXED UNISEX VEST

SIZE	76	80	84	88	92	96	100	104	108	112	116	120	124	128	132	136	140	144	148	152
Regular				✓	✓	✓	✓	✓	✓	✓	✓	✓	✓	✓	✓	✓	✓			

✓ = standard sizing • = style BVCJML08 □ = not available

VAN HEUSEN

STYLE CODE: VSJB08

DESCRIPTION:
Slim Fit Single Breasted Jacket

FABRIC:
67% Polyester/30% Wool/3% Elastane
Dry Clean

JACKET FEATURES:

- Stout/Regular/Long Lengths
- 2 Button
- Single Breasted
- Flap Pockets
- Double Vent

STYLE CODE: VSPB08

DESCRIPTION:
Slim Fit Flat Front Trousers

FABRIC:
67% Polyester/30% Wool/3% Elastane
Machine Washable

TROUSER FEATURES:

- Regular Lengths
- Flat Front
- Front Slant Pockets
- 2 Double Welt Back Pockets

COLOURS:



Black BBLK



STYLE CODE VSJB08 – SLIM FIT JACKET

SIZE	76	80	84	88	92	96	100	104	108	112	116
Regular				✓	✓	✓	✓	✓	✓	✓	✓
Long							✓	✓	✓	✓	

STYLE CODE VSPB08 – SLIM FIT TROUSER

SIZE	76	80	84	88	92	96	100	104	108	112	116
Regular	✓	✓	✓	✓	✓	✓	✓	✓			

✓ = standard sizing □ = not available

CLASSIC RELAXED FIT

SLIM FIT

STYLE CODE: BVEBLZ08

DESCRIPTION: Euro Tailored Fit Single Breasted Blazer

FABRIC:
67% Polyester/30% Wool/3% Elastane
Dry Clean

JACKET FEATURES:

- Stout/Regular/Long Lengths
- 2 Button
- Single Breasted
- Flap Pockets
- Double Vent
- Patch Pocket

COLOURS:



Black BBLK



Navy BNVB



ALSO AVAILABLE

STYLE CODE: PATCH08



Unisex Patch Pocket
Black BBLK,
Charcoal BCCG
& Navy BNVB.
Suitable for all
08 Jackets

STYLE CODE BVEBLZ08 – EURO TAILORED FIT JACKET

SIZE	76	80	84	88	92	96	100	104	108	112	116	120	124	128
Regular						✓	✓	✓	✓	✓	✓	✓	✓	✓

✓ = standard sizing □ = not available

STYLE CODE: BVCJWW08

DESCRIPTION:
Classic Fit Single Breasted Jacket

FABRIC:
67% Polyester/30% Wool
/3% Elastane
Dry Clean

JACKET FEATURES:

- Regular Length 1 Button
- Single Breasted
- Flap Pockets



STYLE CODE: BVCTWW08

DESCRIPTION:
Classic Fit Flat Front Trousers

FABRIC:
67% Polyester/30% Wool
/3% Elastane
Machine Washable

TROUSER FEATURES:

- Regular Length Flat Front
- 2 Front Cross Pockets
- 2 Double Welt Back Pockets



STYLE CODE: BVCSWW08

DESCRIPTION:
Classic Fit Pencil Skirt

FABRIC:
67% Polyester/30% Wool
/3% Elastane
Machine Washable

PENCIL SKIRT FEATURES:

- Regular Length Flat Front
- Back Split
- Centre Back Zip



COLOURS:



Black BBLK



Charcoal BCCG



Navy BNVB

BVCJWW08 – CLASSIC FIT SINGLE BREASTED JACKET

JACKET SIZE	6	8	10	12	14	16	18	20	22	24
CHEST CM	86	91	96	101	106	111	118	125	130	135
WAIST CM	76	81	86	91	96	101	108	115	120	125
HEM CM	98	103	108	113	118	123	130	137	142	147
	✓	✓	✓	✓	✓	✓	✓	•	•	•

BVCTWW08 – CLASSIC FIT FLAT FRONT TROUSER

TROUSER SIZE	6	8	10	12	14	16	18	20	22	24
WAIST CM	68	73	78	83	88	93	100	107	112	117
HIP CM	94	99	104	109	114	119	126	133	138	143
THIGH CM	58.6	61.3	64	66.7	119	72.1	75.3	78.5	81.7	84.9
	✓	✓	✓	✓	✓	✓	✓	•	•	•

BVCSWW08 – CLASSIC FIT FLAT FRONT SKIRT

SKIRT SIZE	6	8	10	12	14	16	18	20	22	24
WAIST CM	68	73	78	83	88	93	100	107	112	117
HIP CM	91	96	101	106	111	116	123	130	135	140
LENGTH CM	58.5	58.5	58.5	58.5	58.5	58.5	58.6	58.5	58.5	58.5
	✓	✓	✓	✓	✓	✓	✓	•	•	•

✓ = standard sizing • = BVCJWWL08, BVCTWWL08, BVCSWWL08 only

EURO TAILORED FIT

CLASSIC FIT

VAN HEUSEN

STYLE CODE: BWSBELT08

DESCRIPTION: Classic Fit Skirt

FABRIC:
67% Polyester/30% Wool/3% Elastane
Machine Washable

SKIRT FEATURES:

- 4 Belt Loops
- Slanted Side Pockets
- Regular Length
- Flat Front
- Back Split
- Centre Back Zip

STYLE CODE: BWTSLIM08

DESCRIPTION: Slim Fit Trouser

FABRIC:
67% Polyester/30% Wool/3% Elastane
Machine Washable

TROUSER FEATURES:

- Ezifit Waistband Tab
- Boot Splits at Hem
- Regular Length
- Flat Front
- 2 Front Cross Pockets
- 2 Double Welt Back Pockets

COLOURS:



Black BBLK



Charcoal BCCG



Navy BNVB (BWSBELT08 only)



STYLE CODE BWSBELT08 – CLASSIC FIT WOMEN'S SKIRT

SKIRT SIZE	4	6	8	10	12	14	16	18	20	22	24	26	28
CHEST CM	63	68	73	78	83	88	93	100	107	112	117	122	127
WAIST CM	86	91	96	101	106	111	116	123	130	135	140	145	150
	✓	✓	✓	✓	✓	✓	✓	✓	✓	✓	✓	✓	✓

STYLE CODE BWTSLIM08 – SLIM FIT WOMEN'S TROUSER

TROUSER SIZE	4	6	8	10	12	14
WAIST CM	64	69	74	79	84	89
HIP CM	83.5	88.5	93.5	98.5	103.5	108.5
THIGH CM	48.6	51.3	54	56.7	59.4	62.1
	✓	✓	✓	✓	✓	✓

✓ = standard sizing

VAN HEUSEN

STYLE CODE: VEJM89

DESCRIPTION:
Euro Tailored Fit Single Breasted Jacket

FABRIC:
50% Wool/50% Trevira High Tech Fabric
Dry Clean

JACKET FEATURES:

- Stout/Regular/Long Lengths
- 2 Button
- Single Breasted
- Flap Pockets
- Double Vent

STYLE CODE: VETM89

DESCRIPTION: Euro Tailored Fit Flat Front Trouser

FABRIC:
50% Wool/50% Trevira High Tech Fabric
Dry Clean

TROUSER FEATURES:

- Regular Lengths
- Flat Front
- Front Slant Pockets
- 2 Double Welt Back Pockets

COLOURS:



Black VBLK



Charcoal VCCG



Ink VIKB



STYLE CODE VEJM89 – EURO TAILORED FIT JACKET

SIZE	76	80	84	88	92	96	100	104	108	112	116	120	124	128	132	136	140	144	148	152	
Stout									✓	✓											
Regular						✓	✓	✓	✓	✓	✓	✓									
Long							✓	✓	✓	✓											

STYLE CODE VETM89 – EURO TAILORED TROUSER

SIZE	76	80	84	88	92	96	100	104	108	112	116	120	124	128	132	136	140	144	148	152	
Regular		✓	✓	✓	✓	✓	✓	✓	✓	✓	✓	✓									

✓ = standard sizing □ = not available

EURO TAILORED FIT

STYLE CODE: VEJWW89

DESCRIPTION:
Classic Fit Single Breasted Jacket

FABRIC:
50% Wool/50% Trevira
High Tech Fabric
Dry Clean

JACKET FEATURES:

- Regular Length 1 Button
- Single Breasted
- Flap Pockets



STYLE CODE: VETWW89

DESCRIPTION:
Classic Fit Flat Front Trouser

FABRIC:
50% Wool/50% Trevira
High Tech Fabric
Dry Clean

TROUSER FEATURES:

- Regular Length Flat Front
- 2 Front Cross Pockets
- 2 Double Welt Back Pockets



STYLE CODE: VESWW89

DESCRIPTION:
Classic Fit Pencil Skirt

FABRIC:
50% Wool/50% Trevira
High Tech Fabric
Dry Clean

PENCIL SKIRT FEATURES:

- Regular Length Flat Front
- Box Pleat Back Detail
- Centre Back Zip



COLOURS:



Black VBLK



Charcoal VCCG



Ink VIKB

STYLE CODE VEJWW89, VETWW89 & VESWW89 – CLASSIC FIT WOMEN'S SUIT SEPARATES

JACKET SIZE	4	6	8	10	12	14	16	18	20	22	24
CHEST CM	81	86	91	96	101	106	111	118	125	130	135
WAIST CM	71	76	81	86	91	96	101	108	115	120	125
HEM CM	93	98	103	108	113	118	123	130	137	142	147
	✓	✓	✓	✓	✓	✓	✓	✓	✓	✓	✓
TROUSER SIZE	4	6	8	10	12	14	16	18	20	22	24
WAIST CM	63	68	73	78	83	88	93	100	107	112	117
HIP CM	89	94	99	104	109	114	119	126	133	138	143
	✓	✓	✓	✓	✓	✓	✓	✓	✓	✓	✓
SKIRT SIZE	4	6	8	10	12	14	16	18	20	22	24
WAIST CM	65	70	75	80	85	90	95	100	105	110	115
HIP CM	83	88	93	98	103	108	113	118	123	128	133
SKIRT LENGTH CM	61.5	61.5	61.5	61.5	61.5	61.5	61.5	61.5	61.5	61.5	61.5
	✓	✓	✓	✓	✓	✓	✓	✓	✓	✓	✓

✓ = standard sizing

STYLE CODE: VCSW89

DESCRIPTION:
Classic Fit Pencil Skirt

FABRIC:
50% Wool/50% Trevira
High Tech Fibre
Dry Clean

PENCIL SKIRT FEATURES:

- Regular Length Flat Front
- Back Split
- Centre Back Zip



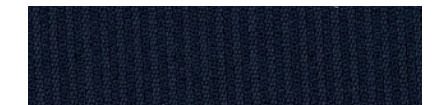
COLOURS:



Black VBLK



Charcoal VCCG



Ink VIKB

STYLE CODE VCSW89 – CLASSIC FIT WOMEN'S SKIRT

SKIRT SIZE	4	6	8	10	12	14	16	18	20	22	24
WAIST CM	65	70	75	80	85	90	90	100	105	110	115
HIP CM	83	88	93	98	103	108	108	118	123	128	133
SKIRT LENGTH CM	61.5	61.5	61.5	61.5	61.5	61.5	61.5	61.5	61.5	61.5	61.5
	✓	✓	✓	✓	✓	✓	✓	✓	✓	✓	✓

✓ = standard sizing □ = not available

STYLE CODE: VSJ920

DESCRIPTION:
Slim Fit Single Breasted Jacket

FABRIC:
88% Wool/10% Polyester/2% Elastane
Dry Clean

- JACKET FEATURES:**
- Stout/Regular/Long Lengths
 - 2 Button
 - Single Breasted
 - Flap Pockets
 - Double Vent

STYLE CODE: VXST920

DESCRIPTION:
Slim Fit Flat Front Trousers

FABRIC:
88% Wool/10% Polyester/2% Elastane
Dry Clean

- TROUSER FEATURES:**
- Regular Length
 - Flat Front
 - Front Slant Pockets
 - 2 Double Welt Back Pockets

COLOURS:



Charcoal RCGG



STYLE CODE VSJ920 – SLIM FIT JACKET

SIZE	76	80	84	88	92	96	100	104	108	112	116	120
Stout					✓	✓	✓	✓	✓	✓		
Regular					✓	✓	✓	✓	✓	✓	✓	✓
Long								✓	✓			

STYLE CODE VXST920 – SLIM FIT TROUSER

SIZE	76	80	84	88	92	96	100	104	108	112	116	120
Regular	✓	✓	✓	✓	✓	✓	✓	✓	✓	✓		

✓ = standard sizing □ = not available

STYLE CODE: VCJW920

DESCRIPTION:
Modern Classic Fit Jacket

FABRIC:
88% Wool/10% Polyester/2% Elastane
Dry Clean

- JACKET FEATURES:**
- Regular Length 1 Button
 - Single Breasted
 - Flap Pockets
 - Flat Front

STYLE CODE: VCPW920

DESCRIPTION:
Modern Classic Fit Flat Front Trousers

FABRIC:
88% Wool/10% Polyester/2% Elastane
Dry Clean

- TROUSER FEATURES:**
- Regular Length
 - 2 Front Cross Pockets
 - Flat Front
 - 2 Double Welt Back Pockets

STYLE CODE: VCSW920

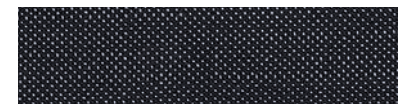
DESCRIPTION:
Modern Classic Fit Pencil Skirt

FABRIC:
88% Wool/10% Polyester/2% Elastane
Dry Clean

- PENCIL SKIRT FEATURES:**
- Regular Length Flat Front
 - Centre Back Zip
 - Back Split



COLOURS:



Charcoal RCGG

STYLE CODE VCJW920, VCPW920, VCSW920 – MODERN CLASSIC FIT WOMEN'S SUIT SEPARATES

SIZE	6	8	10	12	14	16	18	20	22	24
	✓	✓	✓	✓	✓	✓	✓	✓	✓	✓

✓ = standard sizing □ = not available

SLIM FIT

MODERN CLASSIC FIT

STYLE CODE: VSJ930

DESCRIPTION: Slim Fit Single Breasted Jacket

FABRIC: 55% Wool/43% Polyester/2% Elastane
Dry Clean

JACKET FEATURES:

- Stout/Regular/Long Lengths
- 2 Button
- Single Breasted
- Flap Pockets
- Double Vent

STYLE CODE: VXST930

DESCRIPTION: Slim Fit Flat Front Trousers

FABRIC: 55% Wool/43% Polyester/2% Elastane
Dry Clean

TROUSER FEATURES:

- Regular Lengths
- Flat Front
- Front Slant Pockets
- 2 Double Welt Back Pockets

COLOURS:



Blue RCSB



STYLE CODE VSJ930 – SLIM FIT JACKET

SIZE	76	80	84	88	92	96	100	104	108	112	116	120
Stout						✓	✓	✓	✓	✓		
Regular					✓	✓	✓	✓	✓	✓	✓	✓
Long								✓	✓			

STYLE CODE VST930 – SLIM FIT TROUSER

SIZE	76	80	84	88	92	96	100	104	108	112	116	120
Regular		✓	✓	✓	✓	✓	✓	✓	✓			

✓ = standard sizing □ = not available

STYLE CODE: VCJW930

DESCRIPTION: Modern Classic Fit Jacket

FABRIC: 55% Wool/43% Polyester/2% Elastane
Dry Clean

JACKET FEATURES:

- Regular Length 1 Button
- Single Breasted
- Flap Pockets

STYLE CODE: VCPW930

DESCRIPTION: Modern Classic Fit Flat Front Trousers

FABRIC: 55% Wool/43% Polyester/2% Elastane
Dry Clean

TROUSER FEATURES:

- Regular Length Flat Front
- 2 Front Cross Pockets
- 2 Double Welt Back Pockets

STYLE CODE: VCSW930

DESCRIPTION: Modern Classic Fit Pleated Back Skirt

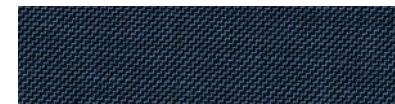
FABRIC: 55% Wool/43% Polyester/2% Elastane
Dry Clean

PENCIL SKIRT FEATURES:

- Regular Length Flat Front
- Box Pleat Back Detail
- Centre Back Zip



COLOURS:



Blue RCSB

STYLE CODE VCJW930, VCPW930 & VCSW930 – MODERN CLASSIC FIT WOMEN'S SUIT SEPARATES

JACKET SIZE	4	6	8	10	12	14	16	18	20	22	24
CHEST CM	81	86	91	96	101	106	111	118	125	130	135
WAIST CM	71	76	81	86	91	96	101	108	115	120	125
HEM CM	93	98	103	108	113	118	123	130	137	142	147
	✓	✓	✓	✓	✓	✓	✓	✓	✓	✓	✓
TROUSER SIZE	4	6	8	10	12	14	16	18	20	22	24
WAIST CM	63	68	73	78	83	88	93	100	107	112	117
HIP CM	89	94	99	104	109	114	119	126	133	138	143
	✓	✓	✓	✓	✓	✓	✓	✓	✓	✓	✓
SKIRT SIZE	4	6	8	10	12	14	16	18	20	22	24
WAIST CM	63	68	73	78	83	88	93	100	107	112	117
HIP CM	86	91	96	101	106	111	116	123	130	135	140
SKIRT LENGTH CM	58.5	58.5	58.5	58.5	58.5	58.5	58.5	58.5	58.5	58.5	58.5
	✓	✓	✓	✓	✓	✓	✓	✓	✓	✓	✓

✓ = standard sizing

SLIM FIT

MODERN CLASSIC FIT

STYLE CODE: JKTW124

DESCRIPTION:
Contemporary Fit Single Breasted Jacket

FABRIC:
64% Polyester/33% Viscose/3% Elastane
Machine Wash
Dry Clean

- JACKET FEATURES:**
- Regular Length 2 Button
 - Single Breasted
 - Flap Pockets



COLOURS:



Black BBLK

STYLE CODE: TRFEZW124

DESCRIPTION:
Contemporary Fit Flat Front Trousers

FABRIC:
64% Polyester/33% Viscose/3% Elastane
Machine Wash

- TROUSER FEATURES:**
- Ezi Fit Waistband
 - Regular Length Flat Front
 - 2 Front Cross Pockets
 - 2 Double Welt Back Pockets



Navy BIKB

STYLE CODE: SKTEZW124

DESCRIPTION:
Contemporary Fit Pencil Skirt

FABRIC:
64% Polyester/33% Viscose/3% Elastane
Machine Wash

- PENCIL SKIRT FEATURES:**
- Ezi Fit Waistband
 - Back Split
 - 2 Front Cross Pockets



STYLE CODE JKTW124, TRFEZW124 & SKTEZW124 – CONTEMPORARY FIT WOMEN'S SUIT SEPARATES

JACKET SIZE	6	8	10	12	14	16	18	20	22	24	26	28	30
CHEST CM	86	91	96	101	106	111	116	121	126	131	136	141	146
	✓	✓	✓	✓	✓	✓	✓	✓	✓	✓	✓	✓	✓
TROUSER SIZE	6	8	10	12	14	16	18	20	22	24	26	28	30
WAIST CM	69	74	79	84	89	94	99	104	109	114	119	124	129
HEM CM	40.8	41.4	42	42.6	43.2	43.8	44.4	45	45.6	46.2	46.8	47.4	48
	✓	✓	✓	✓	✓	✓	✓	✓	✓	✓	✓	✓	✓
SKIRT SIZE	6	8	10	12	14	16	18	20	22	24	26	28	30
WAIST CM	67	72	77	82	87	92	97	102	107	112	117	122	127
	✓	✓	✓	✓	✓	✓	✓	✓	✓	✓	✓	✓	✓

✓ = standard sizing

STYLE CODE: DRESSW124

DESCRIPTION:
Contemporary Fit Self Piping Dress

FABRIC:
64% Polyester/33% Viscose/3% Elastane
Machine Wash

- DRESS FEATURES:**
- Centre Back Invisible zip
 - Back and Front Darts with Self Piping
 - Back Split

COLOURS:



Black BBLK



Navy BIKB



STYLE CODE DRESSW124 – CONTEMPORARY FIT WOMEN'S DRESS

DRESS SIZE	6	8	10	12	14	16	18	20	22
CHEST CM	80	85	90	95	100	105	110	115	120
WAIST CM	70	75	80	85	90	95	100	105	110
HIP CM	90	95	100	105	110	115	120	120	130
	✓	✓	✓	✓	✓	✓	✓	✓	✓

✓ = standard sizing

CONTEMPORARY FIT

CONTEMPORARY FIT

STYLE CODE: JKTMM124

DESCRIPTION:
Contemporary Fit Single Breasted Jacket

FABRIC:
64% Polyester/33% Viscose/
3% Elastane
Dry Clean

JACKET FEATURES:

- Stout/Regular/Long lengths
- 2 Button
- Single Breasted
- Double Vent
- Flat Pockets

STYLE CODE: TRFEZM124

DESCRIPTION: Contemporary Fit Flat Front Trousers

FABRIC:
64% Polyester/33% Viscose/
3% Elastane
Machine Wash

TROUSER FEATURES:

- Short/Regular Lengths
- Ezi Fit
- Flat Front
- Front Slant Pockets
- 2 Single Welt Pockets

COLOURS:



Black BBLK



Navy BIKB



STYLE CODE JKTMM124 – CONTEMPORARY FIT JACKET

SIZE	77	82	87	92	97	100	102	107	112	117	122	127	132	137	142	147
Stout																
Regular				✓	✓	✓	✓	✓	✓	✓	✓					
Long																

STYLE CODE TRFEZM124 – CONTEMPORARY FIT TROUSER

SIZE	77	82	87	92	97	100	102	107	112	117	122	127	132	137	142	147
Stout			✓	✓	✓	✓	✓	✓	✓	✓	✓					
Regular	✓	✓	✓	✓	✓	✓	✓									
Long																

✓ = standard sizing □ = not available

STYLE CODE: TRFFB064

DESCRIPTION: Contemporary Fit Trousers

FABRIC:
100% Polyester
Machine Wash

FEATURES:

- Stout/Regular Lengths
- Ezi Fit Waistband
- 2 Single Welt Back Pockets
- Flat Front
- Front Slant Pockets

COLOURS:



Black BBLK



STYLE CODE TRFFB064 – CONTEMPORARY FIT TROUSERS

SIZE	77	82	87	92	97	102	107	112	117	122	127	132	137	142	147
Stout			✓	✓	✓	✓	✓	✓	✓	✓					
Regular		✓	✓	✓	✓	✓									

✓ = standard sizing □ = not available

CONTEMPORARY FIT

CONTEMPORARY FIT

STYLE CODE: TRFFEZB929

DESCRIPTION:
Contemporary Fit Trousers

FABRIC:
52% Polyester/45% Wool/3%
Elastane
Machine Wash

- FEATURES:**
- Stout/Regular Lengths
 - Ezi Fit Waistband
 - 2 Single Welt Back Pockets
 - Flat Front

COLOURS:



Black BBLK



Charcoal BCHR



STYLE CODE: GLEBEDJ929

DESCRIPTION:
Contemporary Fit Trousers

FABRIC:
52% Polyester/45% Wool/3%
Elastane
Machine Wash

- FEATURES:**
- Stout/Regular Lengths
 - 1 Pleat
 - On Seam Pockets
 - 1 Pocket with Zip
 - 2 Single Welt Back Pockets

COLOURS:



Black BBLK



STYLE CODE TRFFEZB929 – CONTEMPORARY FIT TROUSERS

SIZE	77	82	87	92	97	102	107	112	117	122	127	132	137	142	147
Stout			✓	✓	✓	✓	✓	✓	✓	✓					
Regular	✓	✓	✓	✓	✓	✓									

✓ = standard sizing □ = not available

STYLE CODE GLEBEDJ929 – CONTEMPORARY FIT TROUSERS

SIZE	77	82	87	92	97	102	107	112	117	122	127	132	137	142	147
Stout			✓	✓	✓	✓	✓	✓	✓						
Regular	✓	✓	✓	✓	✓	✓									

✓ = standard sizing □ = not available

STYLE CODE: ZULU05854

DESCRIPTION:
Contemporary Fit Trouser

FABRIC:
100% Polyester
Machine Wash

- FEATURES:**
- Stout/Regular Lengths
 - Ezi Fit Waistband
 - 2 Single Welt Back Pockets
 - 2 Pleat
 - Front Slant Pockets

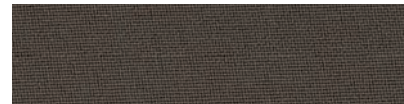
COLOURS:



Black BBLK



Grey Marle BGRM



Taupe BTAG



Navy BNVB



CASUALWEAR
& ACCESSORIES

STYLE CODE ZULU05854 – CONTEMPORARY FIT TROUSERS

SIZE	77	82	87	92	97	102	107	112	117	122	127	132	137	142	147
Stout			✓	✓	✓	✓	✓	✓	✓						
Regular	✓	✓	✓	✓	✓	✓									

✓ = standard sizing □ = not available

CONTEMPORARY FIT



STYLE CODE: PCPM3000/
VHPM3001

DESCRIPTION: Standard Fit Polo

FABRIC:
60% Cotton/40% Polyester
Pique Knit
Cold Machine Wash

- FEATURES:**
- 2 Button Placket
 - 240 GSM
 - Textured Collar
 - Cuff Detail
 - Side Splits

STYLE CODE: PCPW3000A/
VHPW3001A

DESCRIPTION:
Standard Fit Women's Polo

FABRIC:
60% Cotton/40% Polyester
Pique Knit
Cold Machine Wash

- FEATURES:**
- 2 Button Placket
 - No Pocket
 - Textured Collar
 - Cuff Detail
 - 240 GSM

COLOURS:



Black BBLK



Grey Marle BGRM



Navy BNVB



White BWHT



STYLE CODE PCPM3000/VHPM3001 – STANDARD FIT MEN'S POLO

SIZE	S	M	L	XL	2XL	3XL	4XL	5XL
NECK GUIDE	37 – 38cm	39 – 40cm	41 – 42cm	43 – 44cm	46cm	48cm	50cm	52cm
CHEST cm	105	110	116	122	128	134	140	146
	✓	✓	✓	✓	✓	✓	✓	✓

STYLE CODE PCPW3000A/VHPW3001A – STANDARD FIT WOMEN'S POLO

SIZE	S	M	L	XL	2XL	3XL
	6 – 8	10 – 12	14	16	18	20
	✓	✓	✓	✓	✓	✓

✓ = standard sizing

STYLE CODE: VJECR03_BBLK
& VJECR01_BNVB

DESCRIPTION:
Standard Fit Pullover

FABRIC:
100% Cotton
Jersey Knit
Cold Machine Wash

- FEATURES:**
- Ribbed V-Neck
 - Ribbed Cuffs
 - Ribbed Hem

STYLE CODE: VHWC2273

DESCRIPTION:
Standard Fit Women's Cardigan

FABRIC:
100% Cotton
Jersey Knit
Cold Machine Wash

- FEATURES:**
- Ribbed V-Neck
 - Ribbed Cuffs
 - Ribbed Hem

COLOURS:



Black BBLK



Navy BNVB



STYLE CODE VJECR03 & VJECR01 – STANDARD FIT MEN'S PULLOVER

SIZE	S	M	L	XL	2XL	3XL
NECK cm	37 – 38cm	39 – 40cm	41 – 42cm	43 – 44cm	46cm	48cm
	✓	✓	✓	✓	✓	✓

STYLE CODE VHWC2273 – STANDARD FIT WOMEN'S CARDIGAN

SIZE	S	M	L	XL	2XL	3XL
	6 – 8	10 – 12	14	16	18	20
	✓	✓	✓	✓	✓	✓

✓ = standard sizing

STANDARD FIT

STANDARD FIT

VAN HEUSEN



STYLE CODE: VJ31

DESCRIPTION: Water Resistant 3 in 1 Jacket. Short jacket with removable internal puffer vest and robust hardware

FABRIC:
Nylon/Polyester

JACKET FEATURES:

- Water Resistant
- Wind resistant
- Lightweight
- Removable vest
- Waist length
- Hard wearing zipper

COLOURS:



Black BBLK



Navy BNVB



STANDARD FIT

STYLE CODE VJ31 – WATER RESISTANT 3 IN 1 JACKET

JACKET SIZE	2XS	XS	S	M	L	XL	2XL	3XL	4XL	5XL	6XL	7XL	8XL
SHELL SIZE	92	96	100	104	108	112	116	120	124	128	132	136	140
CHEST	104	108	112	116	120	124	128	132	136	140	144	148	152
WAIST	104	108	112	116	120	124	128	132	136	140	144	148	152



STYLE CODE: TONYB522

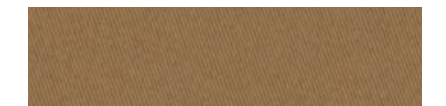
DESCRIPTION:
Contemporary Fit Trousers

FABRIC:
98% Cotton/2% Elastane
Machine Wash

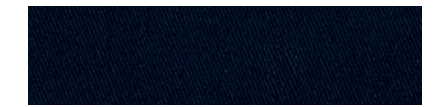
FEATURES:

- Stout/Regular Lengths
- Ezi Fit Waistband
- 2 Single Welt Back Pockets
- Flat Front
- Front Slant Pockets

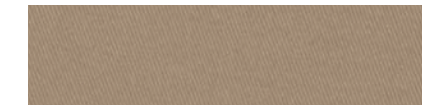
COLOURS:



Camel BCML



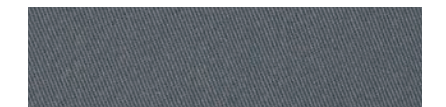
Navy BCYB



Sand BSTG



Black BBLK



Charcoal BCCG



CONTEMPORARY FIT

STYLE CODE TONYB522 – CONTEMPORARY FIT TROUSERS

SIZE	77	82	87	92	97	102	107	112	117	122	127	132	137	142	147
Stout			✓	✓	✓	✓	✓	✓							
Regular		✓	✓	✓	✓	✓									

✓ = standard sizing □ = not available

STYLE CODE: **TIMBA522**

DESCRIPTION:

Contemporary Fit Shorts

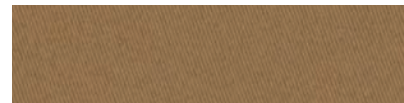
FABRIC:

98% Cotton/2% Elastane
Machine Wash

FEATURES:

- Flat Front
- Hidden Cargo Side Pocket

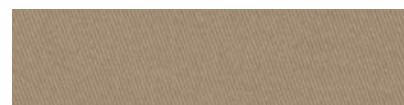
COLOURS:



Camel BCML



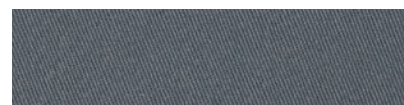
Navy BCYB



Sand BSTG



Black BBLK



Charcoal BCCG



CONTEMPORARY FIT

STYLE CODE TIMBA522 – CONTEMPORARY FIT SHORTS

SIZE	77	82	87	92	97	102	107	112	117	122	127	132	137	142	147
Regular	✓	✓	✓	✓	✓	✓	✓	✓	✓	✓					

✓ = standard sizing □ = not available

STYLE CODE: **VWSKT522**

DESCRIPTION:

Modern Classic Fit Chino Skirt

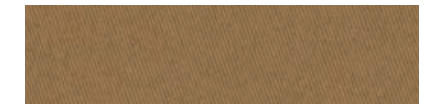
FABRIC:

98% Cotton/2% Elastane
Machine Wash

FEATURES:

- Knee Length
- Slanted Side Pockets
- Belt Loops
- Centre Back Split

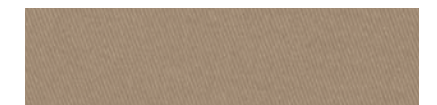
COLOURS:



Camel BCML



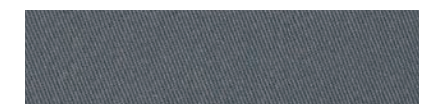
Navy BCYB



Sand BSTG



Black BBLK



Charcoal BCCG



MODERN CLASSIC FIT

STYLE CODE VWSKT522 – MODERN CLASSIC FIT WOMEN'S CHINO SKIRT

JACKET SIZE	4	6	8	10	12	14	16	18	20	22	24
WAIST CM	63	68	73	78	83	88	93	98	103	108	113
HIP CM	83	88	93	98	103	108	113	118	123	123	133

✓ = standard sizing

VAN HEUSEN

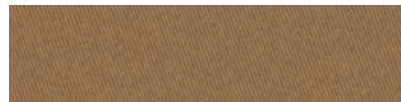
STYLE CODE: VSPX522

DESCRIPTION:
Contemporary Fit Chino

FABRIC:
98% Cotton/2% Elastane
Machine Wash

- FEATURES:**
- Flat Front
 - 1 Coin Pocket
 - Front Slant Pockets
 - 2 Back Pockets

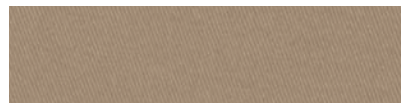
COLOURS:



Camel BCML



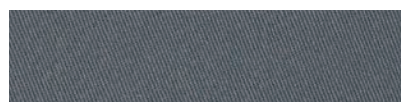
Navy BCYB



Sand BSTG



Black BBLK



Charcoal BCCG



STYLE CODE VSPX522 – CONTEMPORARY FIT CHINO

SIZE	77	82	87	92	97	102	107	112	117	122
Regular	✓	✓	✓	✓	✓	✓	✓	✓	✓	✓

✓ = standard sizing

VAN HEUSEN

STYLE CODE: VSWP522

DESCRIPTION:
Contemporary Fit Women's Chino

FABRIC:
98% Cotton/2% Elastane
Machine Wash

- FEATURES:**
- Twin Needle Stitch Detail at Centre Back
 - 2 Welt Hip Pockets
 - 2 Back Pockets
 - Capri Style

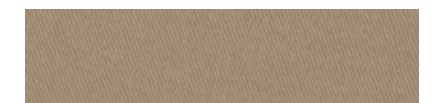
COLOURS:



Camel BCML



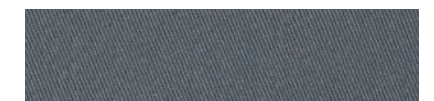
Navy BCYB



Sand BSTG



Black BBLK



Charcoal BCCG



STYLE CODE VSWP522 – CONTEMPORARY FIT WOMEN'S CHINO

SIZE	4	6	8	10	12	14	16	18	20	22	24
	✓	✓	✓	✓	✓	✓	✓	✓	✓	✓	✓

✓ = standard sizing ☐ = not available

STYLE CODE: VTCPM138A

FABRIC:
100% Polyester

- FEATURES:**
- 100% Polyester
 - 8cm Width
 - Classic Style



Burgundy BBGY



Black BBLK



Navy BNVB



Grey Marle BGRM

STYLE CODE: VTCPD68T

FABRIC:
100% Polyester

- FEATURES:**
- 100% Polyester
 - 8cm Blade Width
 - Classic Style



Sky Blue/Navy DSKY



Navy/Sky Blue DCSB



Navy/Red DNVB



Navy PNVB (VTSPR236Z)

STYLE CODE: VTSPR236Z

FABRIC:
100% Polyester

- FEATURES:**
- 100% Polyester
 - 8cm Blade Width
 - Classic Style



Forest PFRT



Oxblood POXR



Black PBLK



Sky Blue PCSB

STYLE CODE: VBM444Z

DESCRIPTION:
- Men's Frame Belt

FABRIC:
- PU Bonded Leather

- FEATURES:**
- Reversible Black/Brown
 - Dress Belt
 - PU Bonded Leather



STYLE CODE: VBCLM033A

DESCRIPTION:
- Men's Plate Belt

FABRIC:
- PU Bonded Leather

- FEATURES:**
- Reversible Black/Brown
 - Dress Belt
 - PU Bonded Leather



STYLE CODE VBM444Z & VBCLM033A – MEN'S BELT

SIZE	32	34	36	38	40
	✓	✓	✓	✓	✓

✓ = standard sizing

STYLE CODE: VBLW001A

DESCRIPTION:
- Women's Dress Belt

FABRIC:
- PU Bonded Leather

- FEATURES:**
- Black/Red Reversible

This belt only comes in one size, instructions are supplied with the belt on how to cut to length.



INDENT ORDER PROCEDURE

1  Pick fabric & design features

2  Sampling for approval

3  Production begins

BUSINESS SHIRTING

MOQ per style/colour: 600 pcs
Production Time: 5 months + Shipping

TAILORED

MOQ per style/colour: 300 pcs
Production Time: 195 days + Shipping

TIES

MOQ per style/colour: 200 pcs
Production Time: 45 days + Shipping

SHIPPING

Shipment by Sea: 35 days

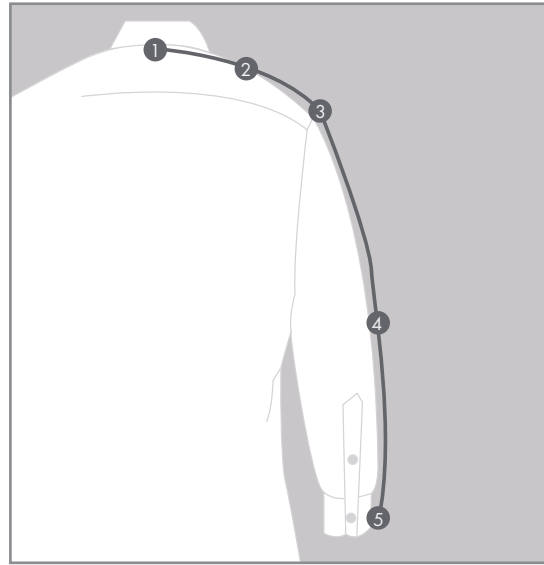
Shipment by Air: 14 days

Contact your Sales Representative or Customer Service for further information



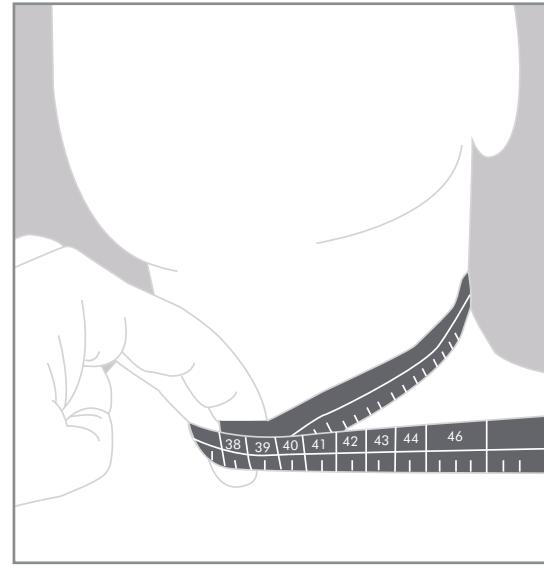
HOW TO MEASURE

MEASURING SHIRTS



Method for measuring Sleeve Length

1. Place tape measure centre back of collar
2. Run tape across top of shoulder to shoulder point
3. Re-grip tape to hold at shoulder point
4. Continue measurement down arm
5. Finish at a point a little longer than wrist joint where hand widens



Method for measuring Neck Circumference

1. Place tape at collar position with start end at centre front
2. Grip at overlap but place two fingers between tape and neck (having fingers inside increases circumference from snug to a comfortable fit level)
3. Measure off circumference on tape to the next highest centimetre
4. This will be between 37cm and 50cm – our largest neck size

FIT DIAGRAM



CLASSIC RELAXED FIT
Relaxed Fit with Longer Body



EURO TAILORED FIT
Semi Fitted



SLIM FIT
Slimmest Fit

MEASURING SUITS



Chest and
Waist Circumference



Shoulder
Width



Back Length and
Sleeve Length



Trouser Waist and
Inside Leg

WOMEN'S MEASURING GUIDE



Bust
Circumference



Waist
Circumference



Hips
Circumference

