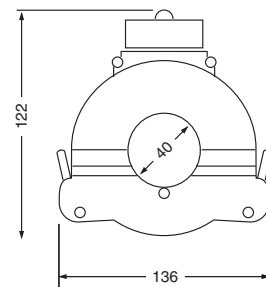


TARA40E

- Trasformatore adatto per corrente primaria da cavo con diametro massimo di 40 mm
Transformer suitable for primary current by cable with maximum diameter 40 mm
- ⚠ - Per un corretto funzionamento è necessario effettuare un cavallotto come indicato in figura.
To have a correct work it is necessary to make a bridge as indicated in the draw.

Primario Primary	Classe Class 0,5	Classe Class 1	Classe Class 3	Corrente secondaria Secondary current	Corrente secondaria Secondary current	Peso Weight
A	VA	VA	VA	5A	1A	Kg
100	1,5			TARA40E 100A	TARA40E 1 100A	
150	1,5			TARA40E 150A	TARA40E 1 150A	
200	2,5			TARA40E 200A	TARA40E 1 200A	
250	2,5			TARA40E 250A	TARA40E 1 250A	
300	2,5			TARA40E 300A	TARA40E 1 300A	
400	5			TARA40E 400A	TARA40E 1 400A	
500	5			TARA40E 500A	TARA40E 1 500A	



TARA30E - TARA50E - TARA80E - TARA120E - TARA160E

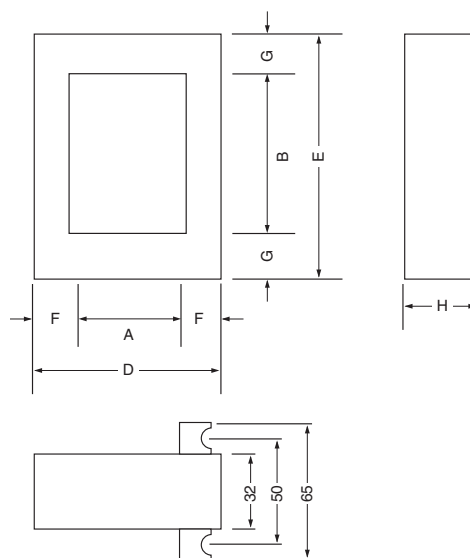
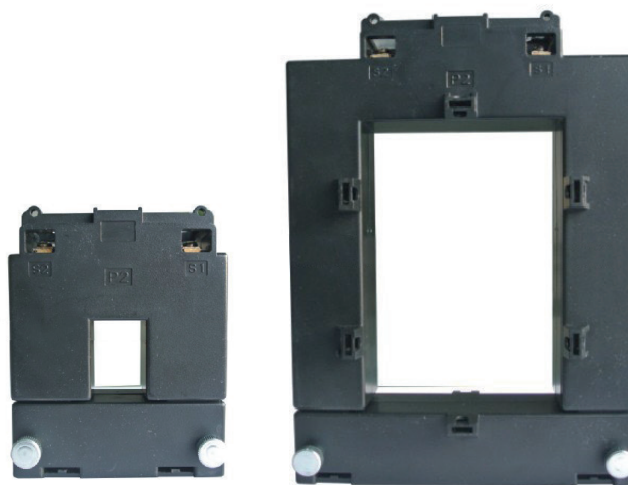
TARA30E	
Primari Primary	Classe Class 1
A	VA
100/5A	1,5
150/5A	1,5
200/5A	1,5
250/5A	1,5
300/5A	2,5
400/5A	5

TARA50E	
Primari Primary	Classe Class 1
A	VA
250/5A	2,5
300/5A	2,5
400/5A	5
500/5A	5
600/5A	7,5
750/5A	7,5
800/5A	10
1000/5A	10

TARA80E	
Primari Primary	Classe Class 1
A	VA
250/5A	2,5
300/5A	2,5
400/5A	2,5
500/5A	5
600/5A	6
750/5A	6
800/5A	6
1000/5A	10

TARA120E	
Primari Primary	Classe Class 1
A	VA
500/5A	5
600/5A	5
750/5A	7,5
800/5A	7,5
1000/5A	10
1200/5A	10
1250/5A	10
1500/5A	10

TARA160E	
Primari Primary	Classe Class 0,5
A	VA
1000/5A	10
1500/5A	15
2000/5A	15
2500/5A	15
3000/5A	20
4000/5A	20
5000/5A	20



Modello Model	A	B	C	D	E	F	G	H	I	Peso Weight
TARA30E	20	30	51	89	111	34	47	40	32	0,75
TARA50E	50	80	73	114	145	32	32	32	33	0,90
TARA80E	80	80	108	144	145	32	32	32	33	1,05
TARA120E	80	120	108	144	185	32	32	32	33	1,25
TARA160E	80	160	120	184	245	52	47	52	38	4,30