

Mini Enclosed Limit Switches

FEATURES

- Side mount switches.
- Momentary contacts.
- Wide choice of heads and actuators.
- Sealed actuators.
- Completely sealed structure.
- Plastic sealed construction.
- Temperature range +5 F to +175 F (-15 C to +80 C).

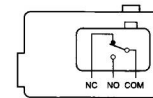
CHARACTERISTICS

| | |
|-------------------------------|---|
| Operating speed | 0.01mm to 50 cm/sec. (at pin plunger) |
| Operating frequency | 120 operations/min. 25m Ω max. (initial) |
| Contact resistance | 100M Ω min.at 500VDC |
| Insulation resistance | |
| Dielectric strength | 1,000 VAC, 50/60 Hz for 1 minute between non-continuous terminals 2,000 VAC , 50/60 Hz for 1minute between current-carrying and non-current carrying parts and between each terminal and ground. |
| Vibration | Malfunction durability : 10 to 55 Hz 1.5mm double amplitude. |
| Shock | Mechanical durability : 1,000m/sec ² approx. 100G's Malfunction durability : 300m/sec ² (approx. 30G's) |
| Ambient operating temperature | Operating : -10 C to +80 C |
| Humidity | 95% RH max. (at +25 C to +35 C) |
| Service life | Mechanically : 10,000,000 operations min. (at rated OT value) Electrically : 500,000 operations min. |
| Degree of protection | IEC :IP65 |

RATING

| | |
|------|---------|
| 10A | 250 VAC |
| 0.5A | 125 VDC |

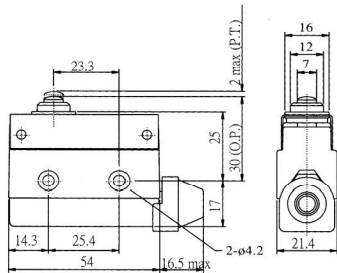
CIRCUITRY



AZ-7100



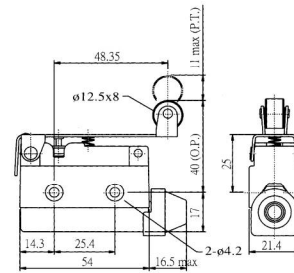
| | |
|--------|----------|
| OF MAX | 600g |
| RF MIN | 100g |
| PT MAX | 2.0mm |
| OT MIN | 0.8mm |
| DT MAX | 0.8mm |
| OP | 30 ± 1.5 |



AZ-7121



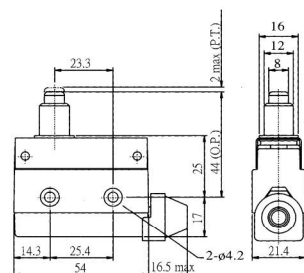
| | |
|--------|----------|
| OF MAX | 180g |
| RF MIN | 50g |
| PT MAX | 11.0mm |
| OT MIN | 3.0mm |
| DT MAX | 2.4mm |
| OP | 40 ± 1.9 |



AZ-7110



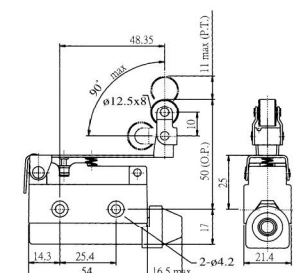
| | |
|--------|----------|
| OF MAX | 600g |
| RF MIN | 100g |
| PT MAX | 2.0mm |
| OT MIN | 5.0mm |
| DT MAX | 0.8mm |
| OP | 44 ± 1.5 |



AZ-7124



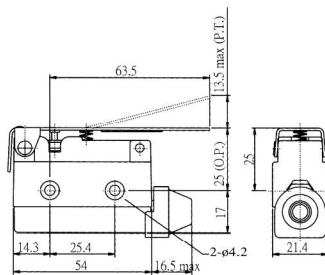
| | |
|--------|----------|
| OF MAX | 200g |
| RF MIN | 60g |
| PT MAX | 11.0mm |
| OT MIN | 3.0mm |
| DT MAX | 2.4mm |
| OP | 50 ± 1.9 |



AZ-7120



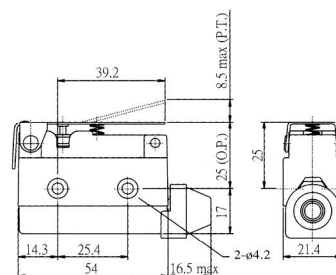
| | |
|--------|----------|
| OF MAX | 150g |
| RF MIN | 40g |
| PT MAX | 13.5mm |
| OT MIN | 4.0mm |
| DT MAX | 3.2mm |
| OP | 25 ± 2.0 |



AZ-7140

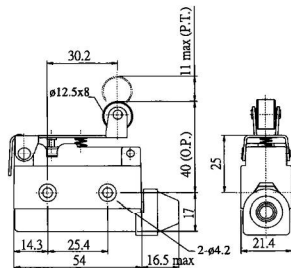


| | |
|--------|----------|
| OF MAX | 220g |
| RF MIN | 60g |
| PT MAX | 8.5mm |
| OT MIN | 2.5mm |
| DT MAX | 2.0mm |
| OP | 25 ± 1.3 |



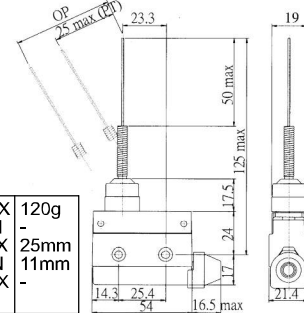
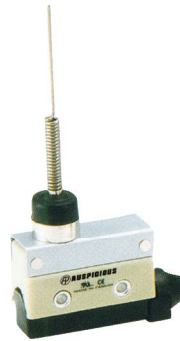
Mini Enclosed Limit Switches

AZ-7141



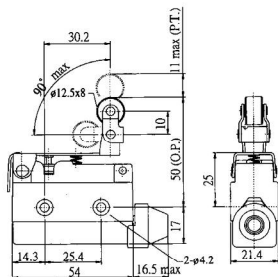
| | |
|--------|---------|
| OF MAX | 240g |
| RF MIN | 80g |
| PT MAX | 6.5mm |
| OT MIN | 2.0mm |
| DT MAX | 1.5mm |
| OP | 40 ±1.6 |

AZ-7169



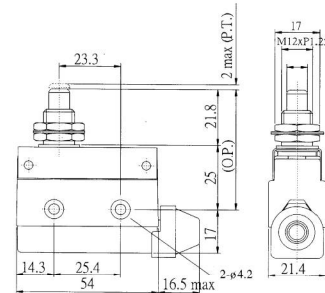
| | |
|--------|------|
| OF MAX | 120g |
| RF MIN | - |
| PT MAX | 25mm |
| OT MIN | 11mm |
| DT MAX | - |
| OP | - |

AZ-7144



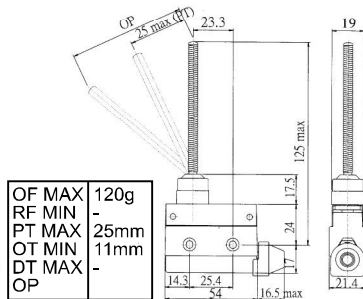
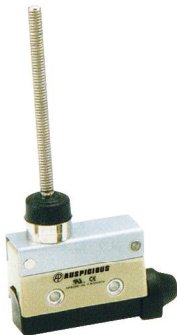
| | |
|--------|---------|
| OF MAX | 280g |
| RF MIN | 100g |
| PT MAX | 6.5mm |
| OT MIN | 2.0mm |
| DT MAX | 1.5mm |
| OP | 50 ±1.6 |

AZ-7310



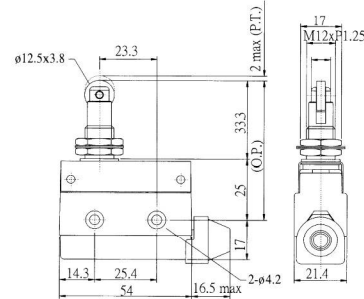
| | |
|--------|-----------|
| OF MAX | 600g |
| RF MIN | 100g |
| PT MAX | 2.0mm |
| OT MIN | 6.0mm |
| DT MAX | 0.8mm |
| OP | 46.8 ±1.5 |

AZ-7161



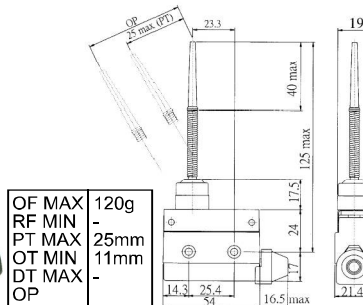
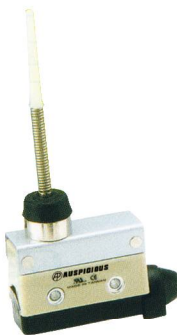
| | |
|--------|------|
| OF MAX | 120g |
| RF MIN | - |
| PT MAX | 25mm |
| OT MIN | 11mm |
| DT MAX | - |
| OP | - |

AZ-7311



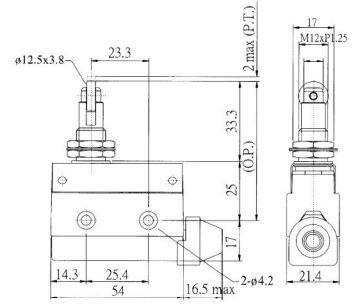
| | |
|--------|-----------|
| OF MAX | 600g |
| RF MIN | 100g |
| PT MAX | 2.0mm |
| OT MIN | 6.0mm |
| DT MAX | 0.8mm |
| OP | 58.3 ±1.5 |

AZ-7166



| | |
|--------|------|
| OF MAX | 120g |
| RF MIN | - |
| PT MAX | 25mm |
| OT MIN | 11mm |
| DT MAX | - |
| OP | - |

AZ-7312



| | |
|--------|-----------|
| OF MAX | 600g |
| RF MIN | 100g |
| PT MAX | 2.0mm |
| OT MIN | 6.0mm |
| DT MAX | 0.8mm |
| OP | 58.3 ±1.5 |