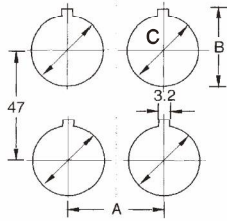


22 φ, 30 φ Series Control Units



Panel cut - out



Dimensions

	Series	22 φ	25 φ	30 φ
A	Standard spacing	30	30	38
	Mushroom head 40 φ	42	42	42
	Long knob selector	44	44	44
B		24.2	26.6	32
C		22.5 φ	25.4 φ	30.5 φ

Components parts

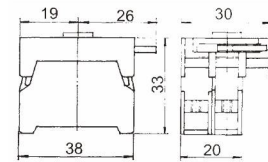
S-9 Filament lamp
6V, 12V, 24V, 30V
36V, 48V, 60V



S-9 Neon lamp
110V, 220V, 380V, 440V
colour : Red, Green



Lamp holder, contact block 1/O Type:LH-B10
coupler 1/C Type:LH-B01



S-9 Led lamp



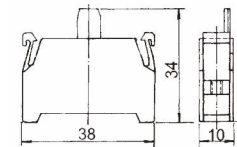
Rated voltage

6V, 12V, 24V
110V, 220V

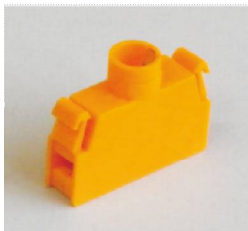
colour : Red, Green,
Orange Yellow, Blue,
White

Contact block

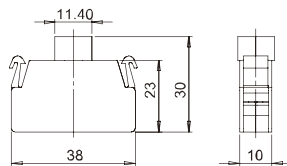
1/O (N/O), (1a) Type:B10
1/C (N/C), (1b) Type:B01



Lamp holder

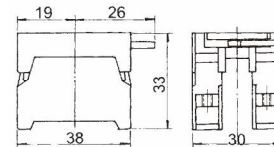


(Full voltage adapter)
Type:LH-2B



Contact block &
coupler

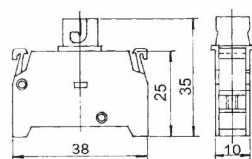
1O/C,(N/O+N/C),(1a+1b)
Type:B10C



Lamp holder



(Full voltage adapter)
Type:LH-1B



Contact block
Type:B1001

1O/C,(N/O+N/C),(1a+1b)

