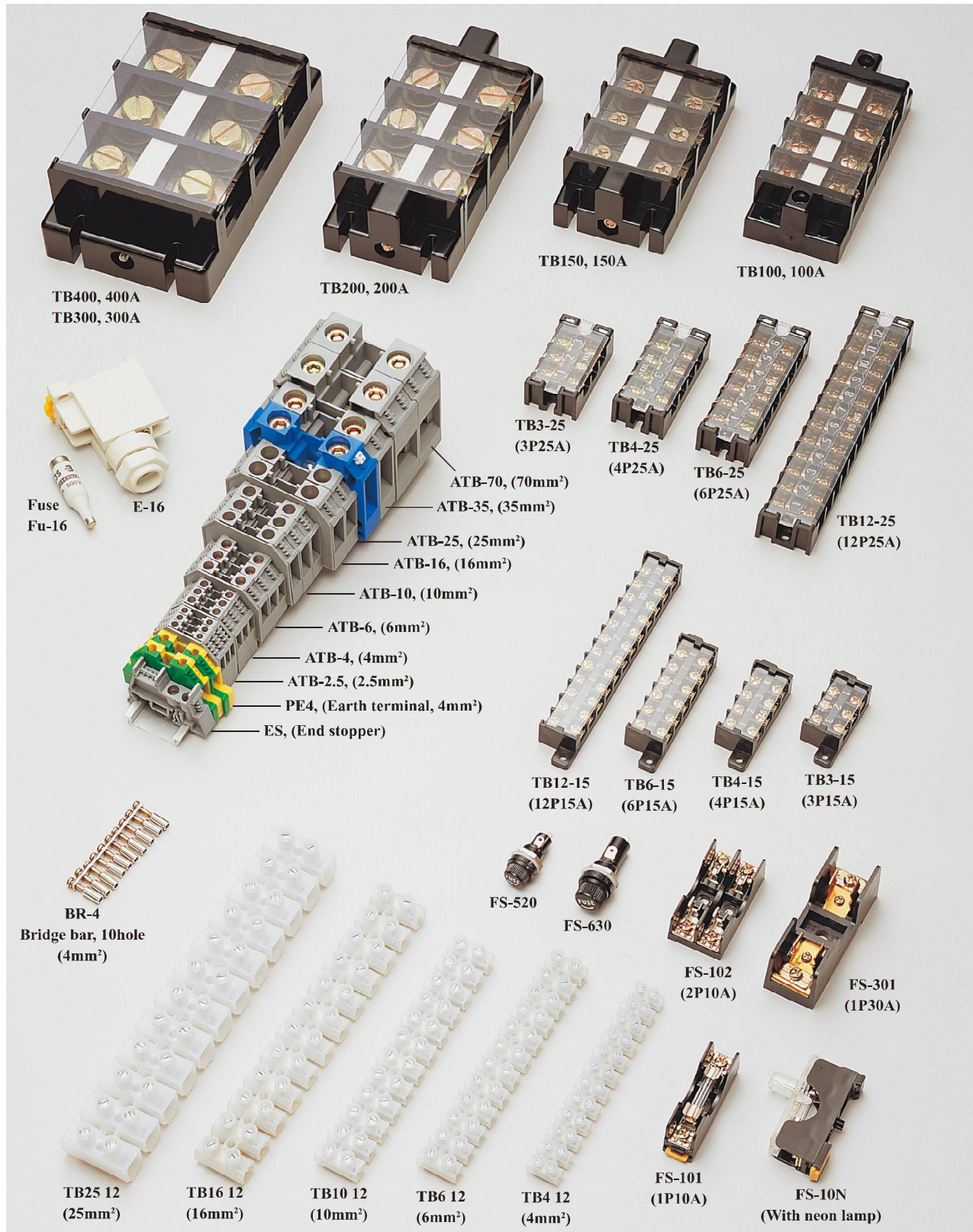


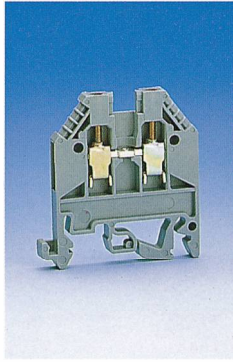
TERMINAL BLOCK, 10A-400A
FUSE HOLDER, & FUSE 0.1A-30A



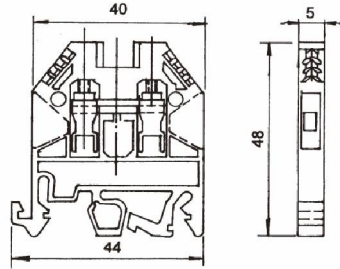
SCREW CLAMP TERMINAL BLOCK 2.5mm²-70mm²



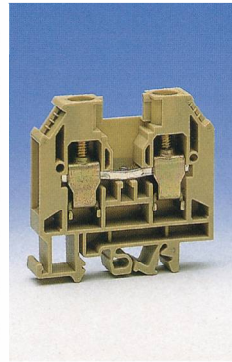
ATB-2.5 2.5mm²



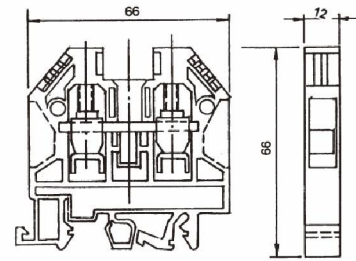
PITCH : 5mm
CURRENT : 20AMP 600VAC
AWG NO. 22 TO 10



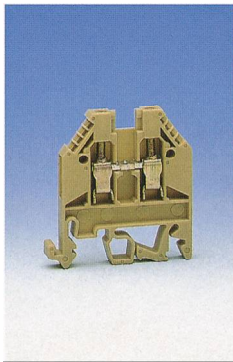
ATB-16 16 mm²



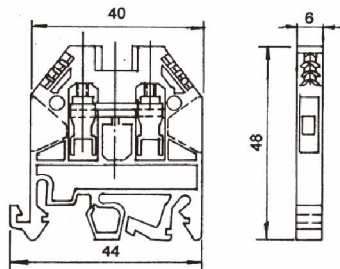
PITCH : 12mm
CURRENT : 75AMP 600VAC
AWG NO. 14 TO 6



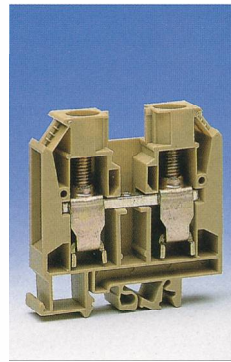
ATB-4 4mm²



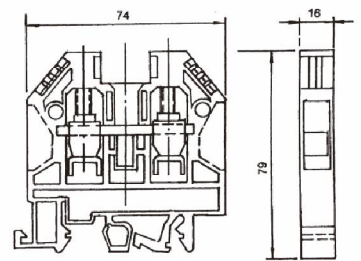
PITCH : 6mm
CURRENT : 30AMP 600VAC
AWG NO. 22 TO 10



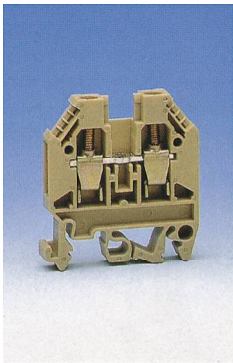
ATB-35 35mm²



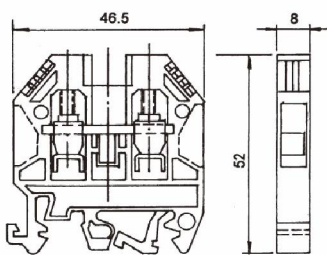
PITCH : 16mm
CURRENT : 100AMP 600VAC
AWG NO. 12 TO 2



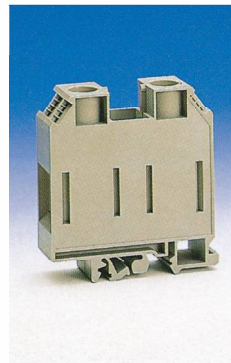
ATB-6 6 mm²



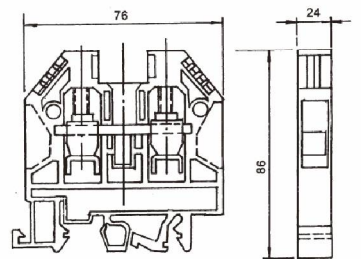
PITCH : 6mm
CURRENT : 40AMP 600VAC
AWG NO. 22 TO 8



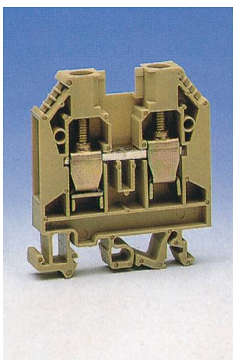
ATB-70 70mm²



PITCH : 24mm
CURRENT : 165AMP 600VAC
AWG NO. 4 TO 2/0 AWG



ATB-10 10 mm²



PITCH : 9.8mm
CURRENT : 60AMP 600VAC
AWG NO. 18 TO 6

