

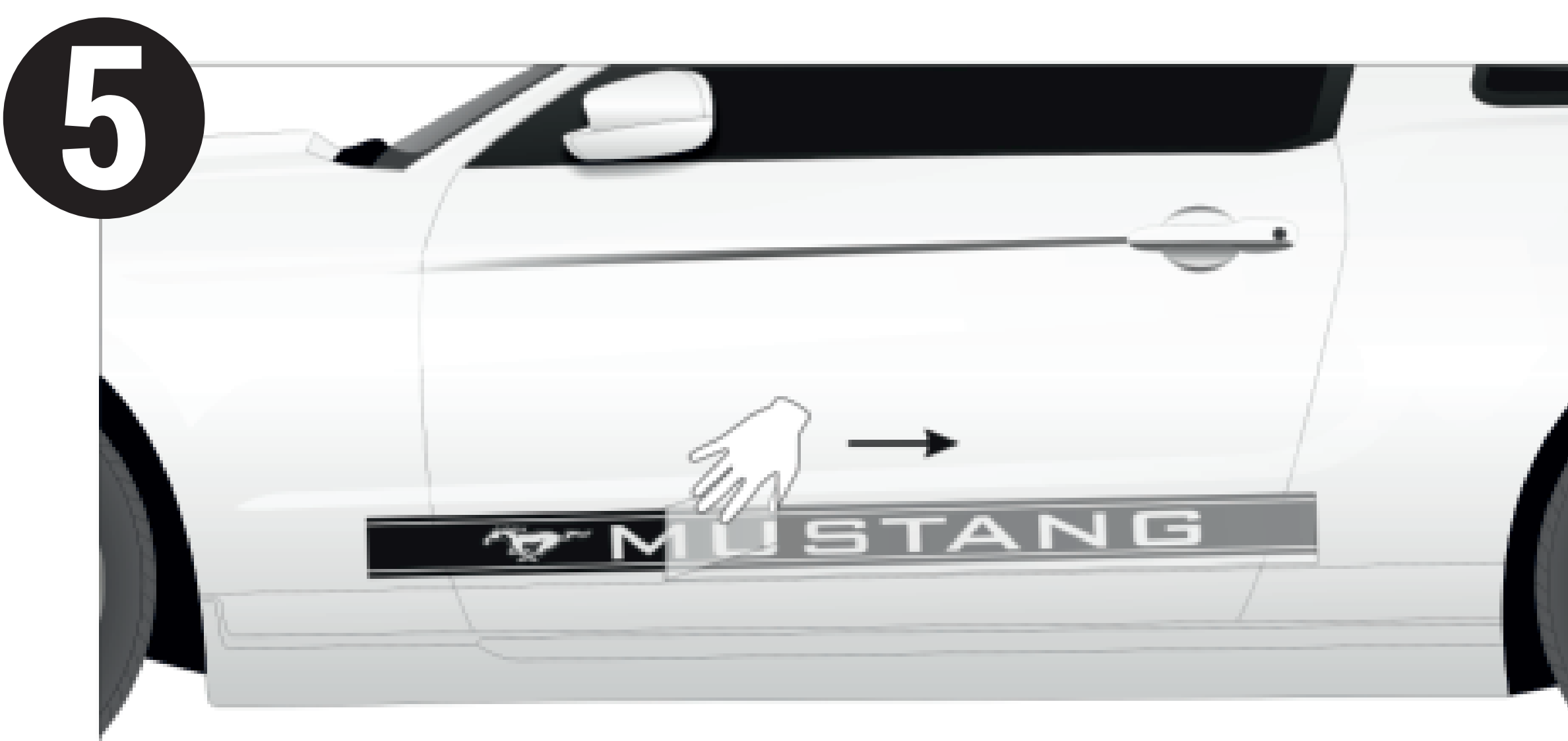
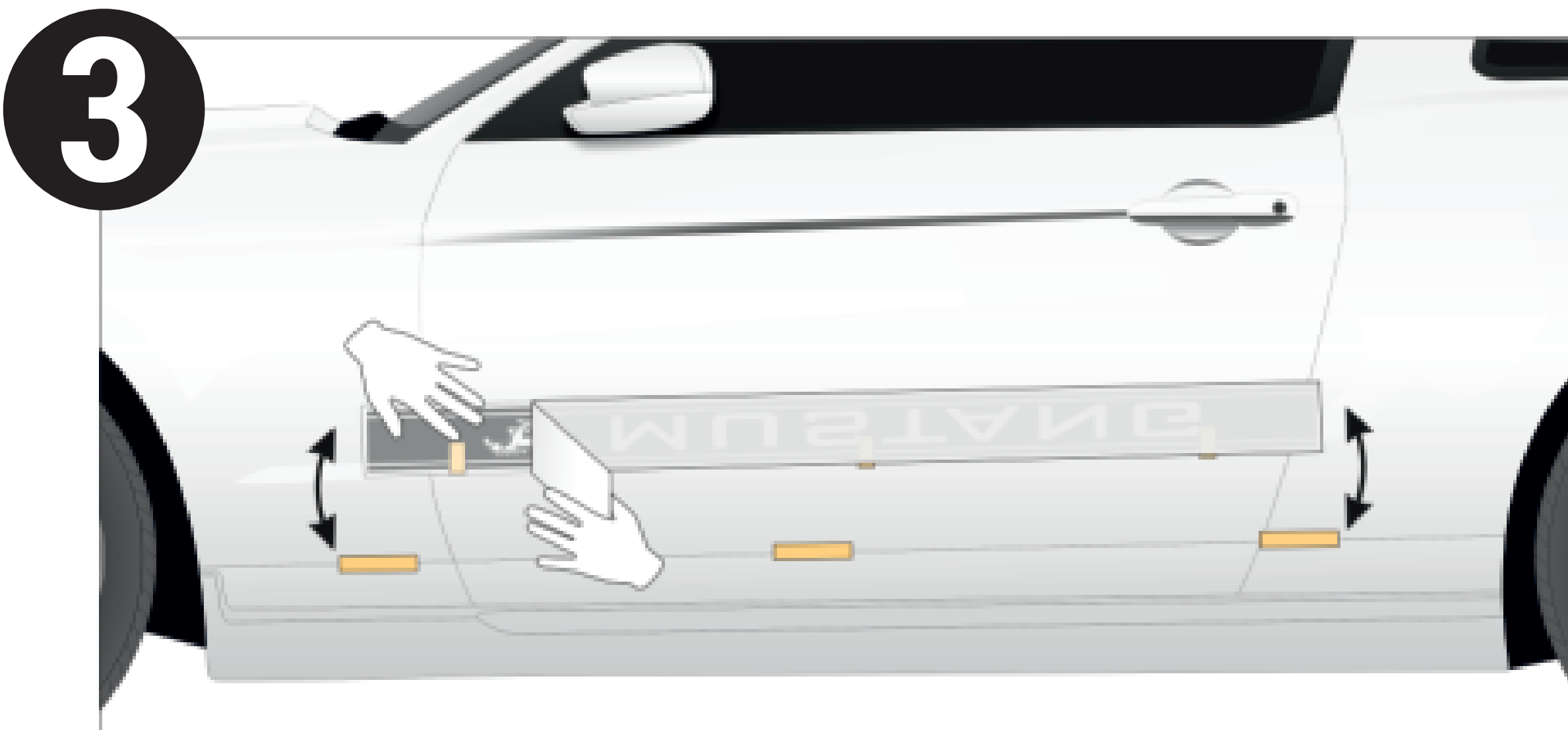
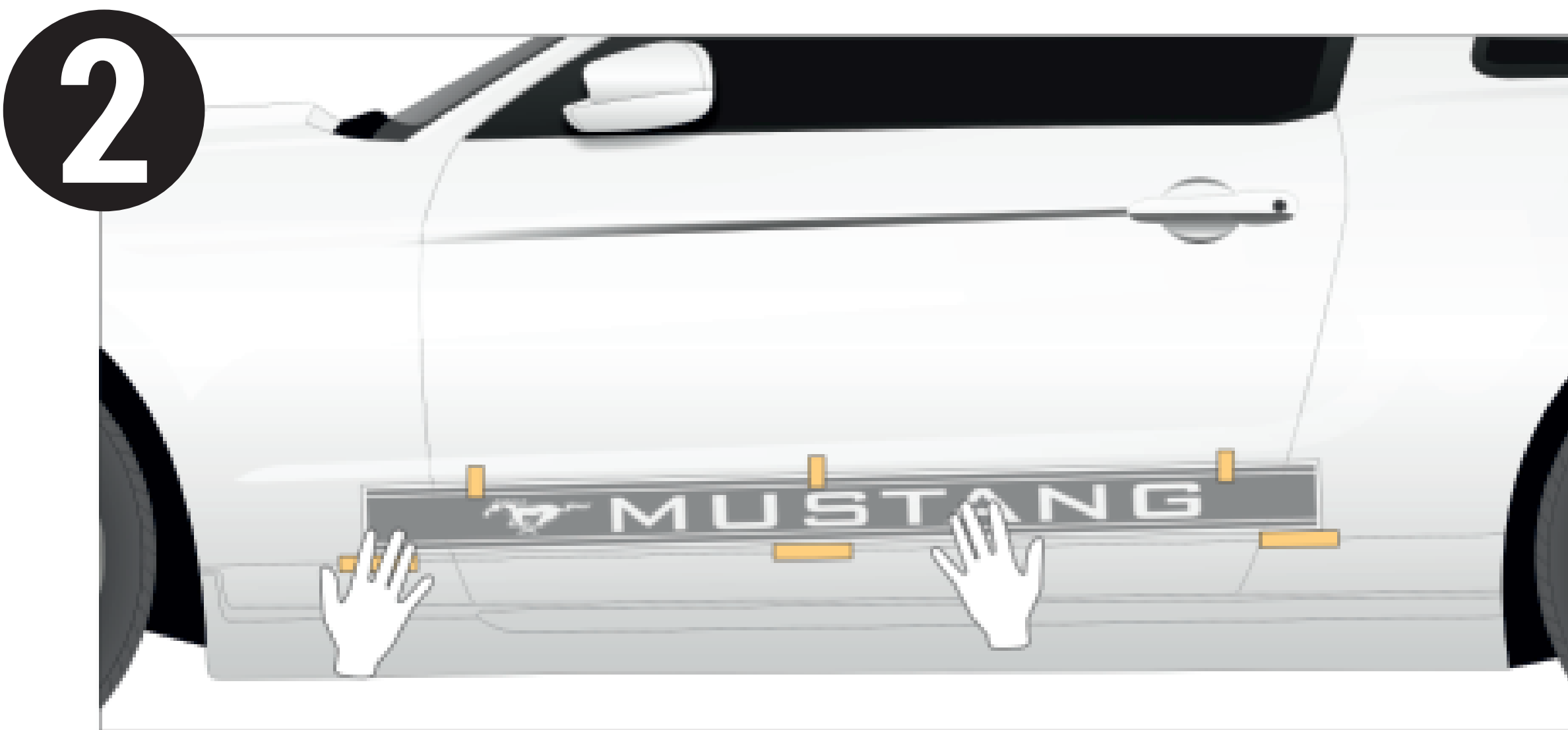
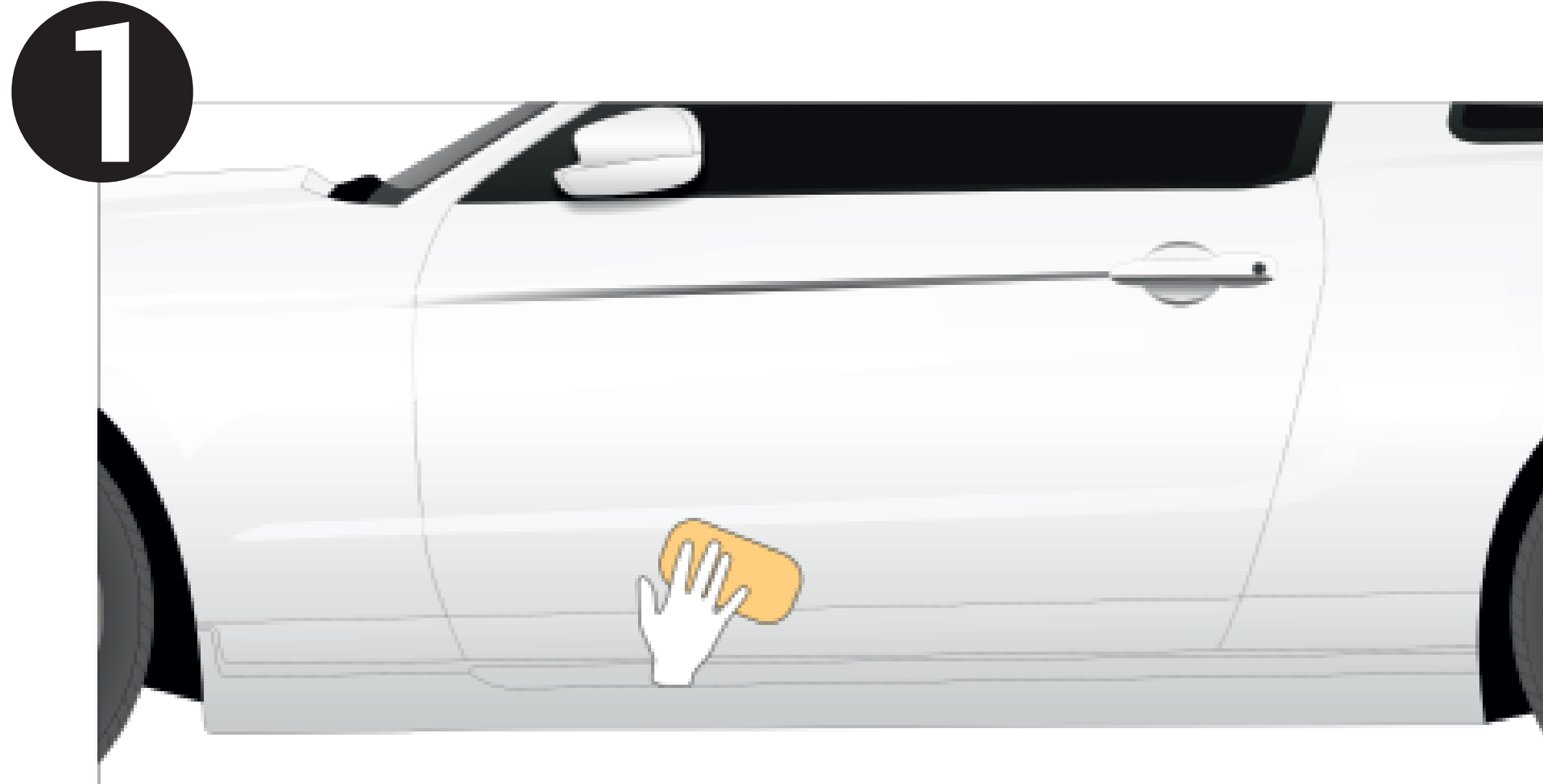
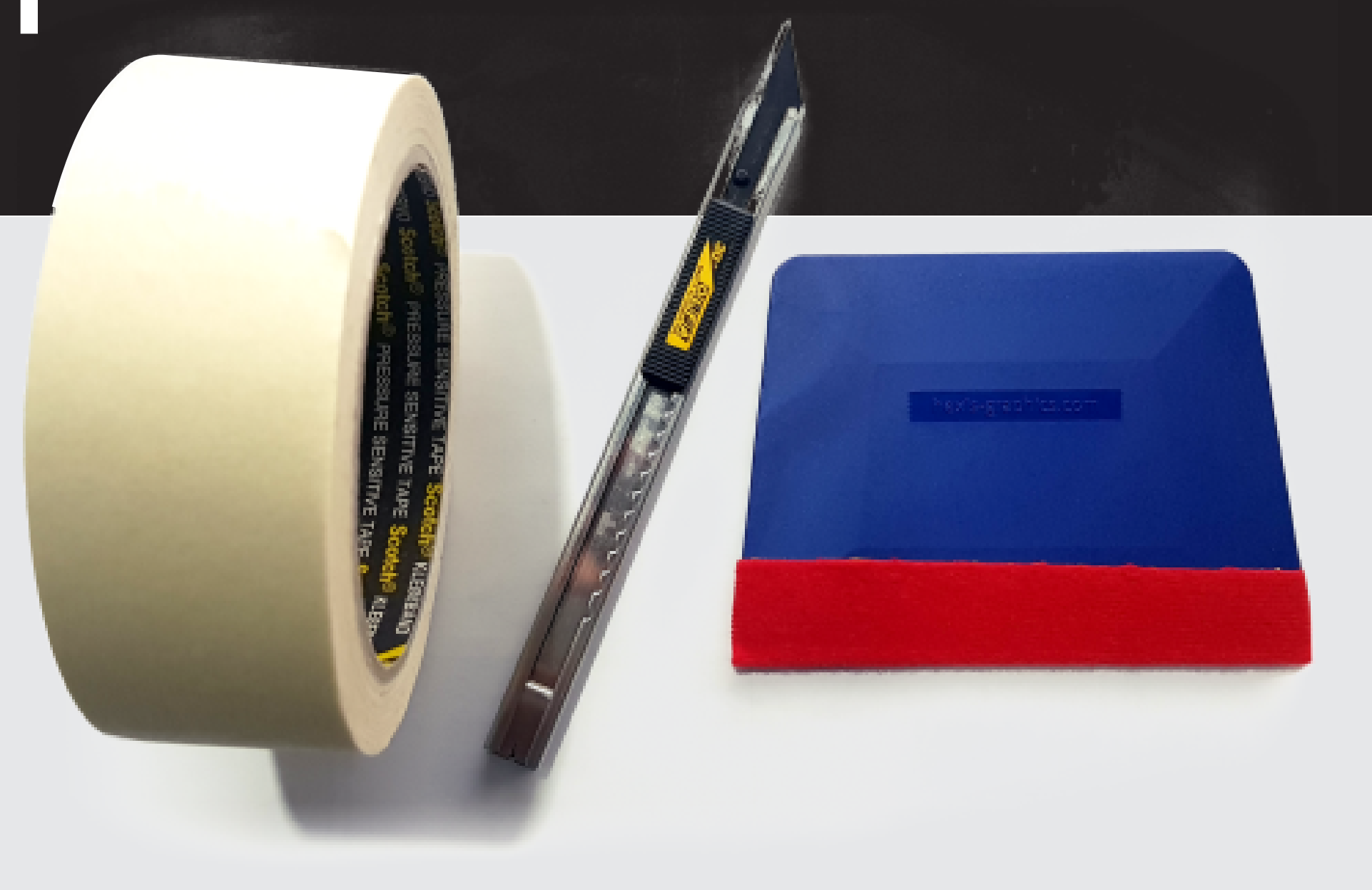
Decals installation instruction

(multipartial decals with overlap)

Tools for installation*

- Application tape
- Cutter
- Squeegee

*Not included



Before starting carefully clean all dirt and residue from the application surface and allow to dry thoroughly.

Use special recommended degreaser liquids for cleaning.

It is necessary to keep not less than 15 degrees of celsius for guaranteed decals application. Work inside the room to avoid sweeps under the vinyl.

Hold vinyl graphic up to vehicle to check proper alignment and fitment. If you are installing the graphic over a vehicle seam, such as in the case with stripe kits, now is a good time to make cuts at the appropriate spots, ensuring that you leave an inch or so of extra vinyl material on each end to tuck into the vehicle seam.

Partially remove the backing from the application tape/decals about 1/4-1/2 way.

Once aligned, firmly press your hand down the application tape while removing more of the backing at the same time, slowly working your way down the decal. Use the vinyl squeegee to firmly squeegee the application tape, working out any air bubbles from behind the vinyl. The vinyl is now bonding to the vehicle's surface.

Carefully and slowly remove the application tape, pulling it off at the top corner at a 45 degree angle. If any air bubbles remain, they will usually disappear after a few weeks.

Cut unnecessary part of decal at the adjacent sing of element as shown on pic. Use Precision-Tip Vinyl Trimming Knife ties.

Firmly tuck the edges of the vinyl into vehicle seams.

Please allow the decal's adhesive to cure for at least 24 hours before washing or waxing your vehicle.