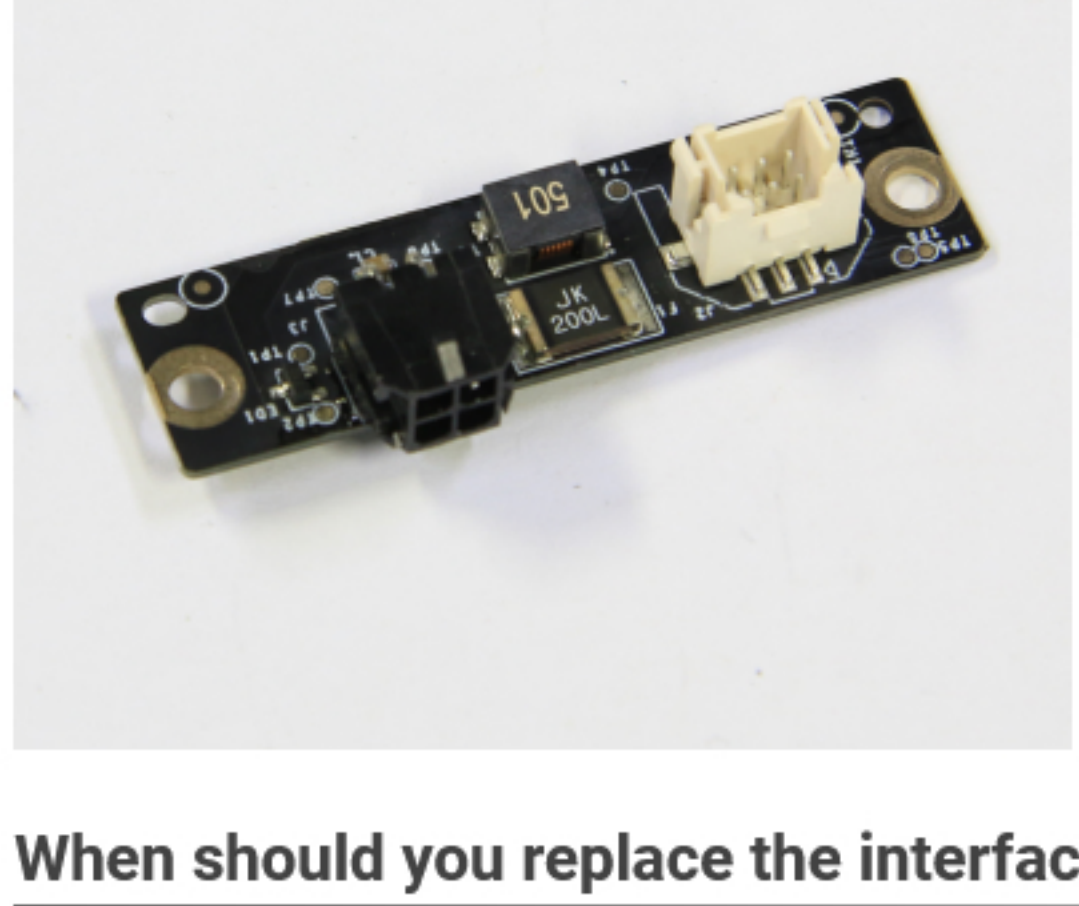


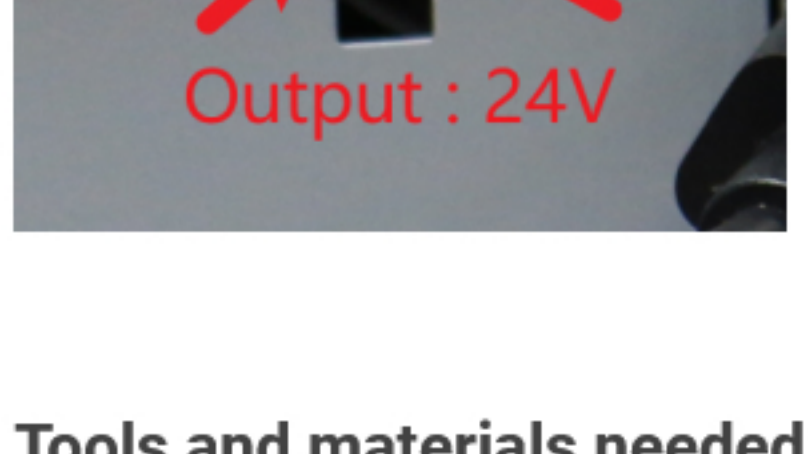
What it is

The AMS interface board is a circuit board that provides 24V power and also handles communication between the AMS and the printer.



When should you replace the interface board?

Should there be a power supply or communication failure with the AMS.



Tools and materials needed

- New AMS interface board
- H2.0 Allen key.

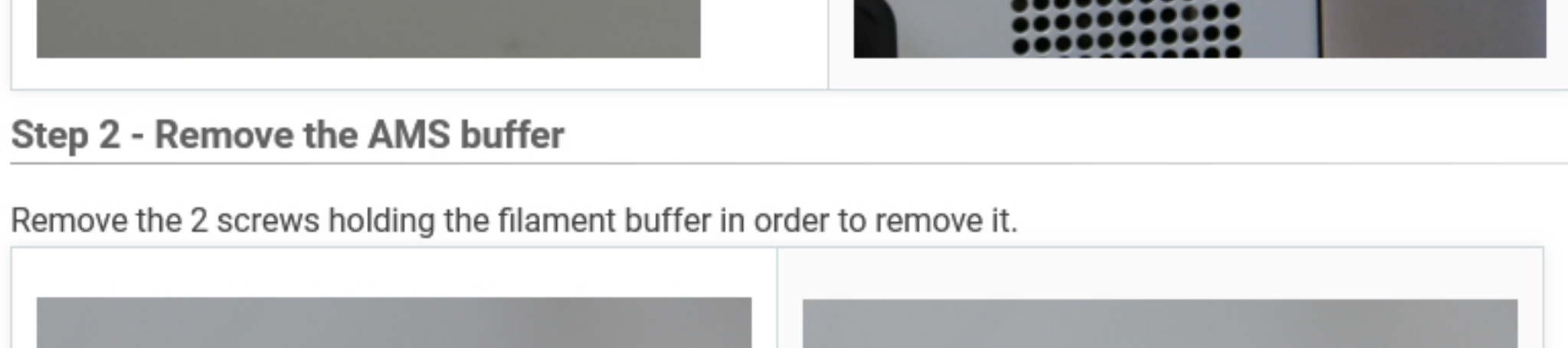
Safety warnings and machine state before starting operation

Prior to commencing with the process in this guide, please make sure the machine is switched off. This guide will require you to disconnect all cables from the AMS along with the PTFE and buffer.

Operation guide

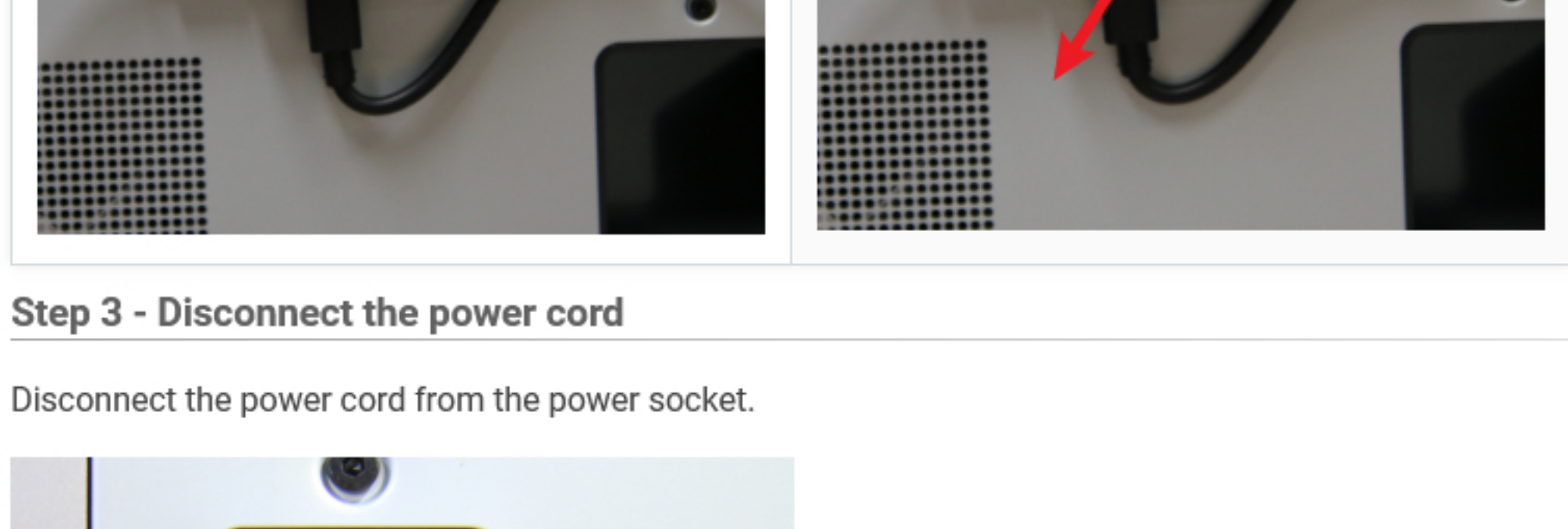
Step 1 - (Disassembly) Disconnect the PTFE tube

Press on the plastic coupler to disconnect the PTFE tube. Unlock the 4-pin cable and disconnect it from the printer.



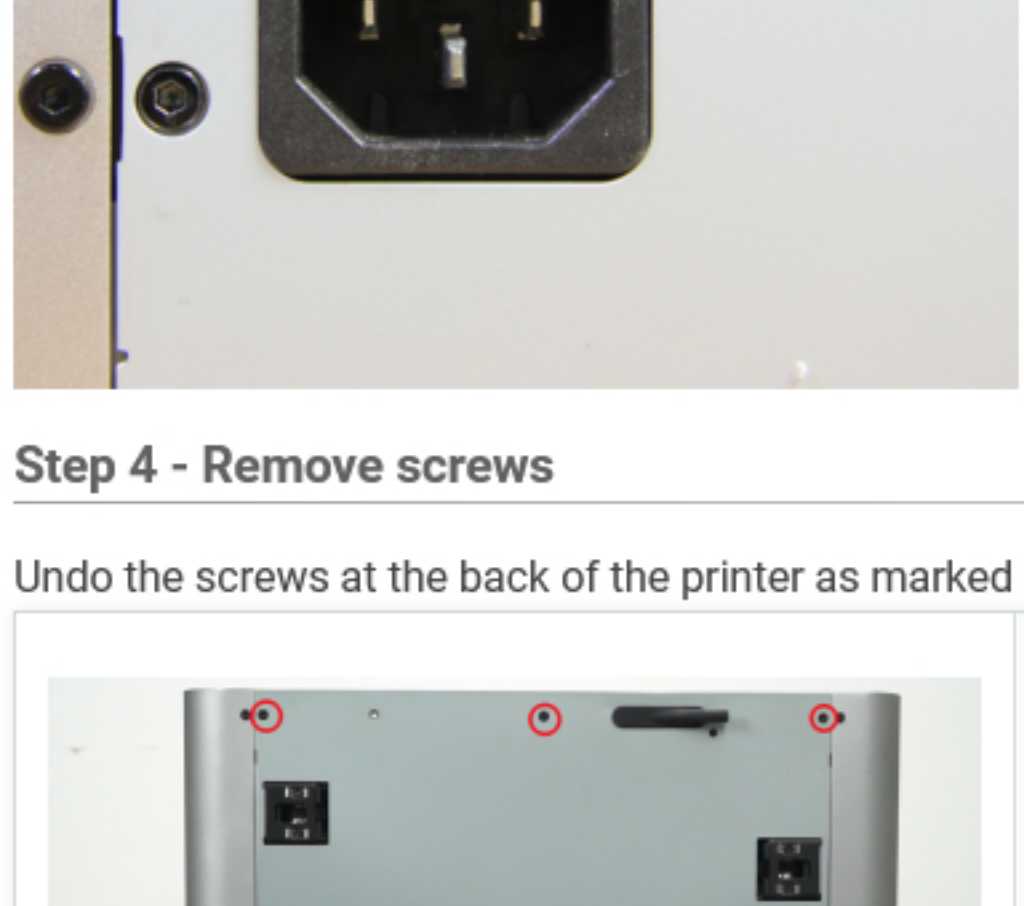
Step 2 - Remove the AMS buffer

Remove the 2 screws holding the filament buffer in order to remove it.



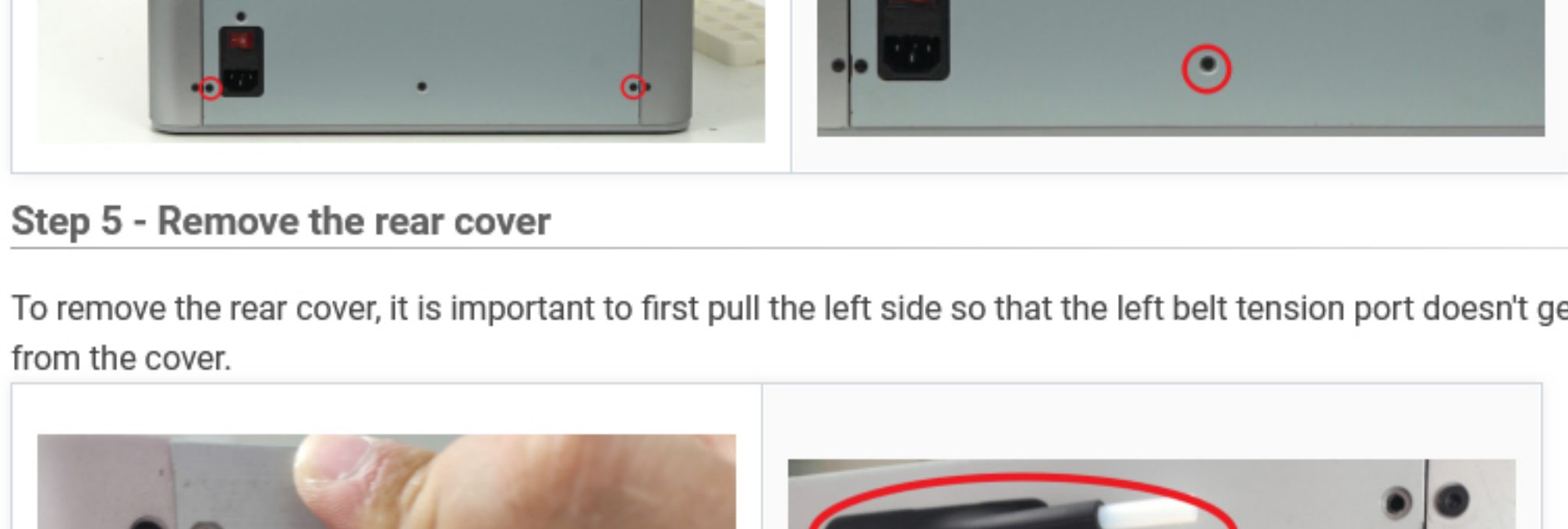
Step 3 - Disconnect the power cord

Disconnect the power cord from the power socket.



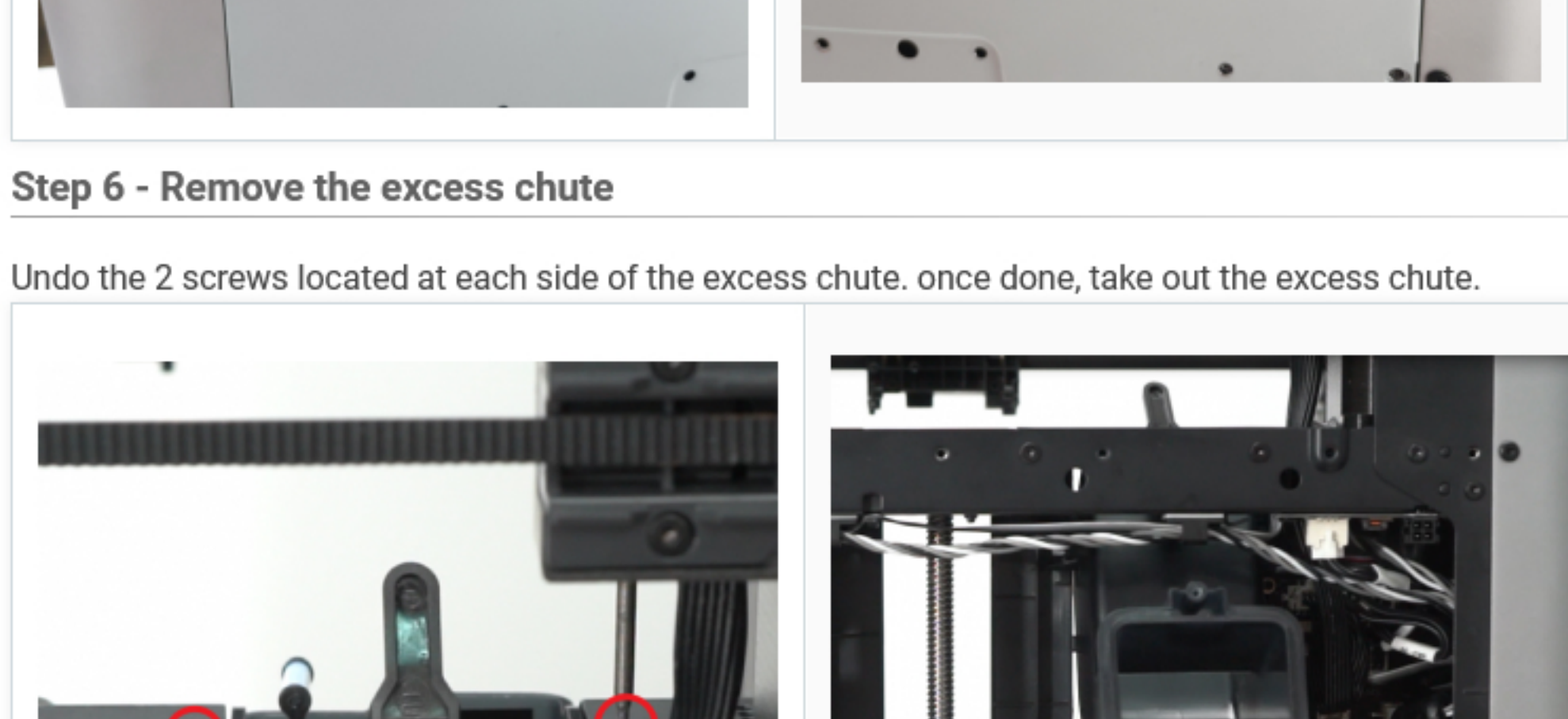
Step 4 - Remove screws

Undo the screws at the back of the printer as marked below. There are a total of 14 screws to undo, 10 of them in the first image and 4 in the second image as shown below.



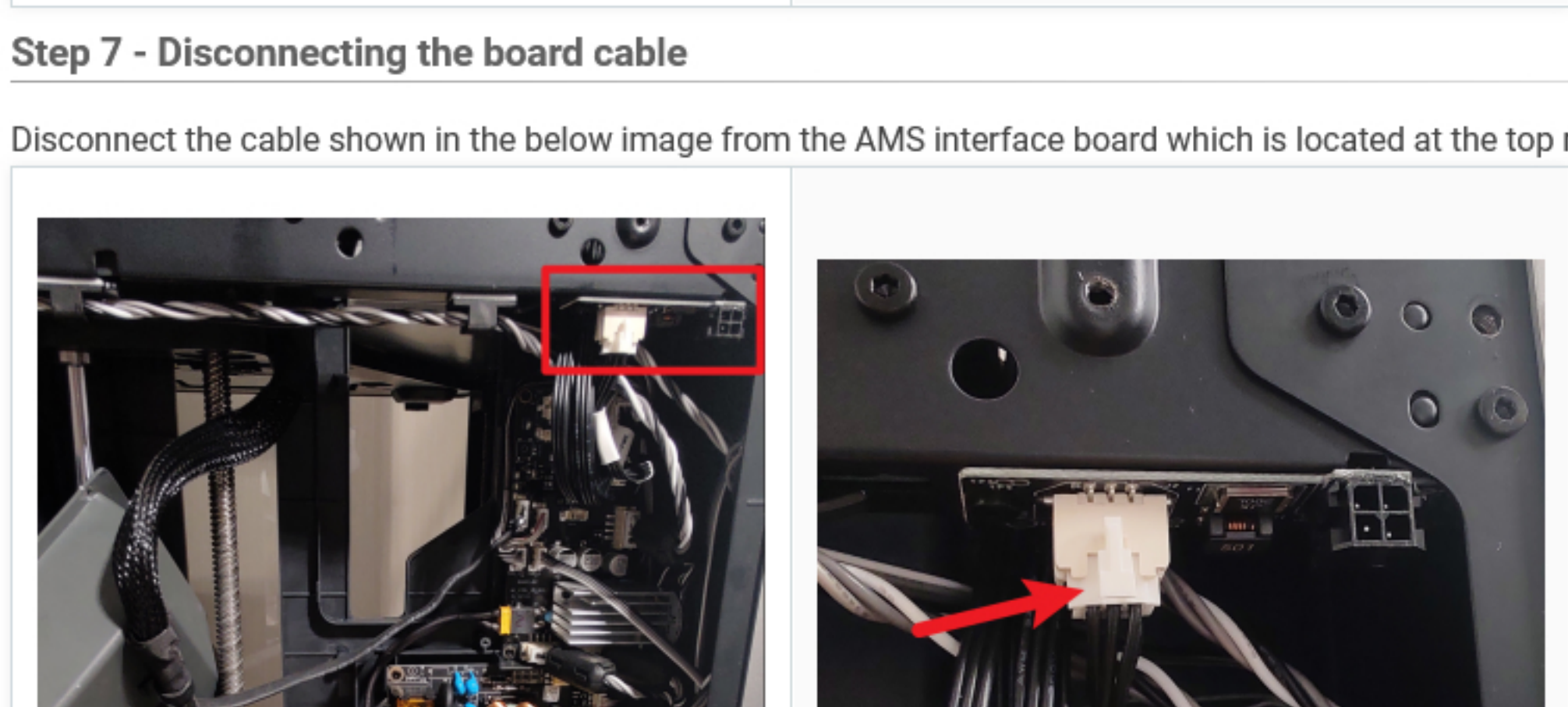
Step 5 - Remove the rear cover

To remove the rear cover, it is important to first pull the left side so that the left belt tension port doesn't get in the way, followed by the right side. Push the PTFE tube outlet inwards to free it from the cover.



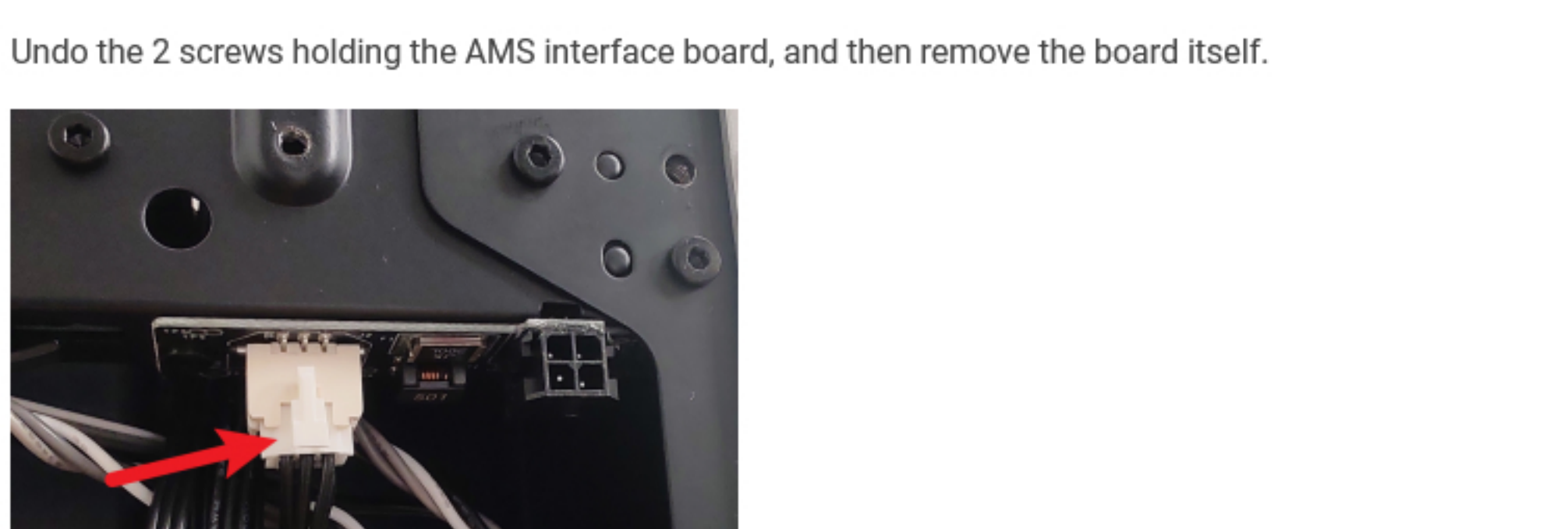
Step 6 - Remove the excess chute

Undo the 2 screws located at each side of the excess chute. once done, take out the excess chute.



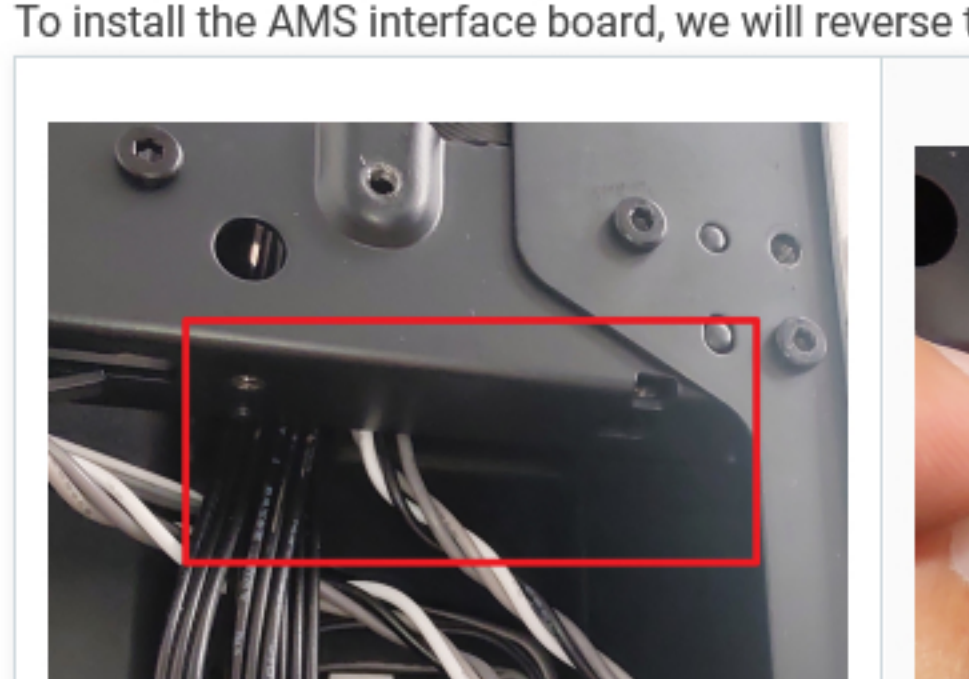
Step 7 - Disconnecting the board cable

Disconnect the cable shown in the below image from the AMS interface board which is located at the top right-hand side of the back of the printer.



Step 8 - Removing the interface board

Undo the 2 screws holding the AMS interface board, and then remove the board itself.



Step 9 - (Assembly) Installing the interface board

To install the AMS interface board, we will reverse the steps taken so far. First, secure the new interface board back in position with 2 screws.



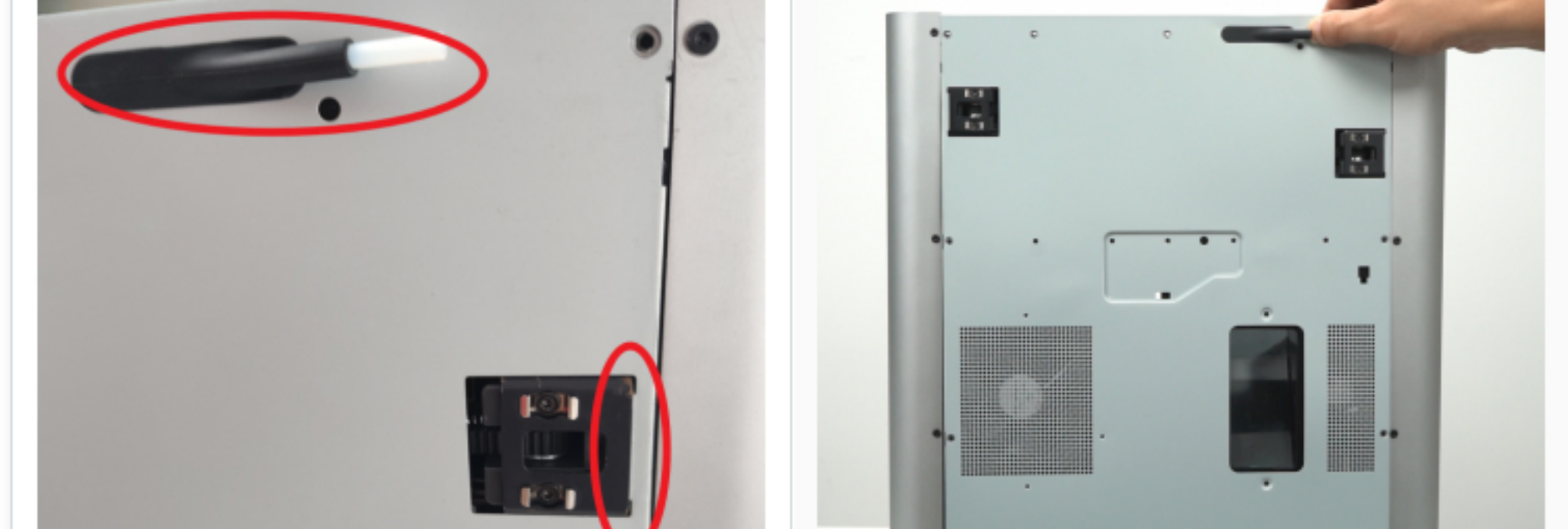
Step 10 - Connecting the cable

Connect the cable back and secure it to the AMS interface board.



Step 11 - Installing the excess chute

Install the excess chute by sliding it back in its position, pay attention to the protruding tabs on both sides of the chute. Finally, secure it in place with 2 screws at each side of the top of the chute.



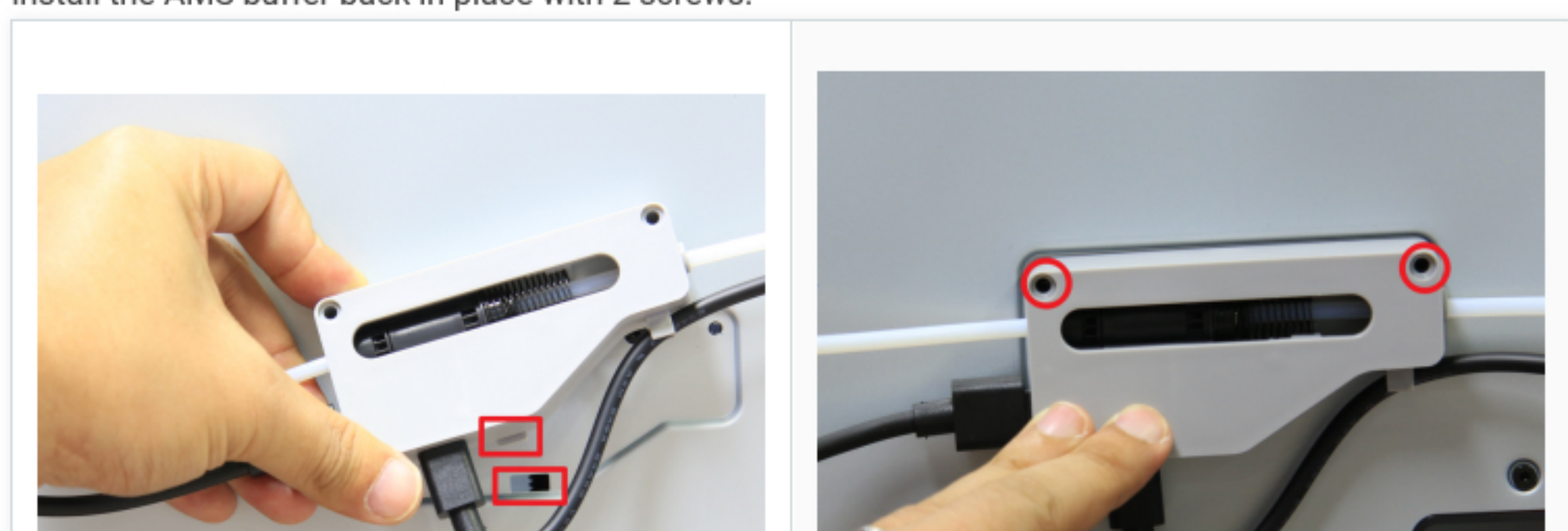
Step 12 - Installing the rear cover

First, pass through the tube bracket and then secure the right side of the back cover past the right belt tensioner as shown below, followed by the left belt tensioner.



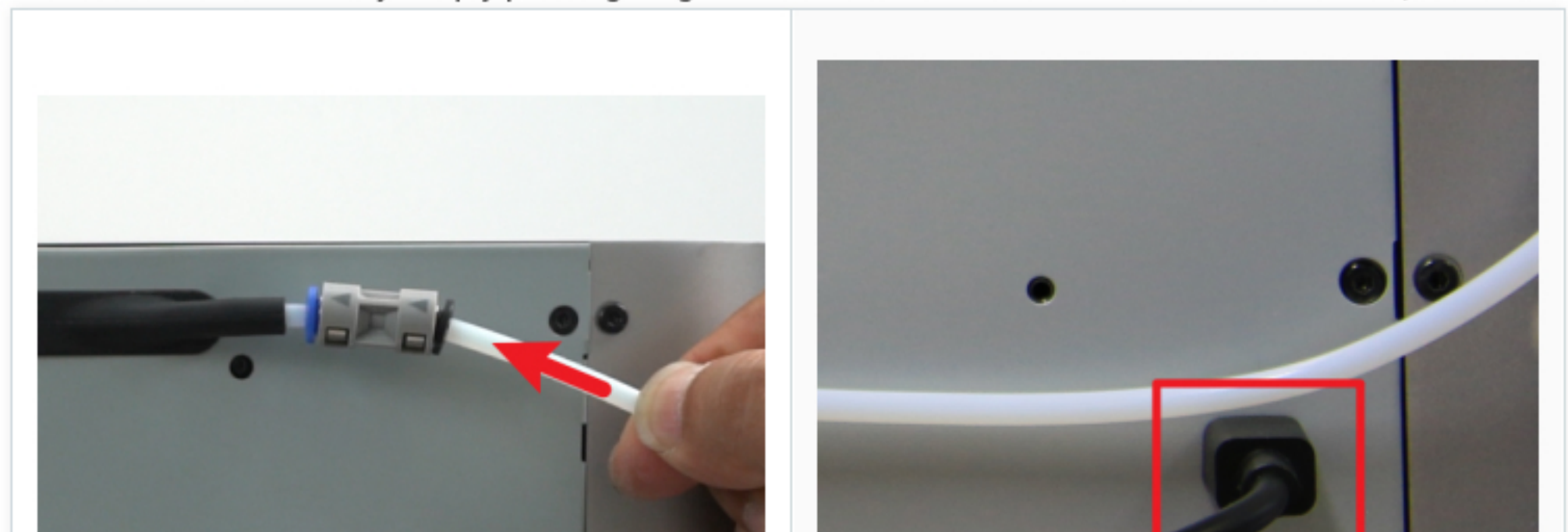
Step 13 - Locking screws

Screw the back panel back on. Take note of the different types of screws (10 and 4) used as pointed out previously.



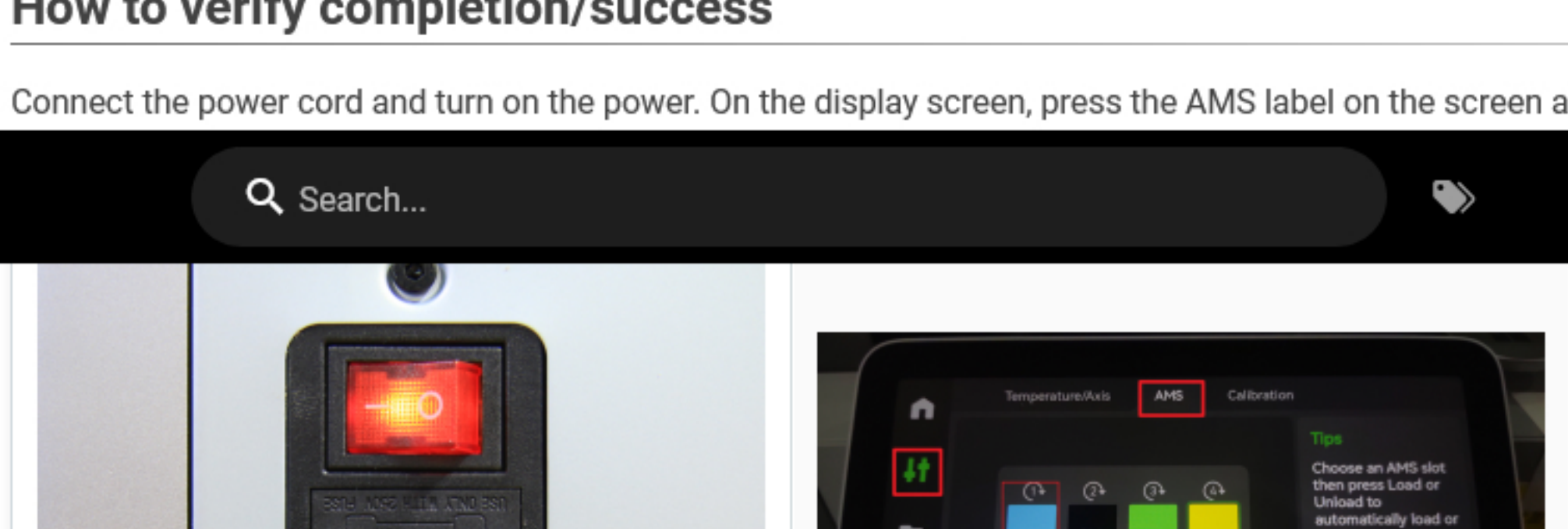
Step 14 - Installing the AMS buffer

Install the AMS buffer back in place with 2 screws.



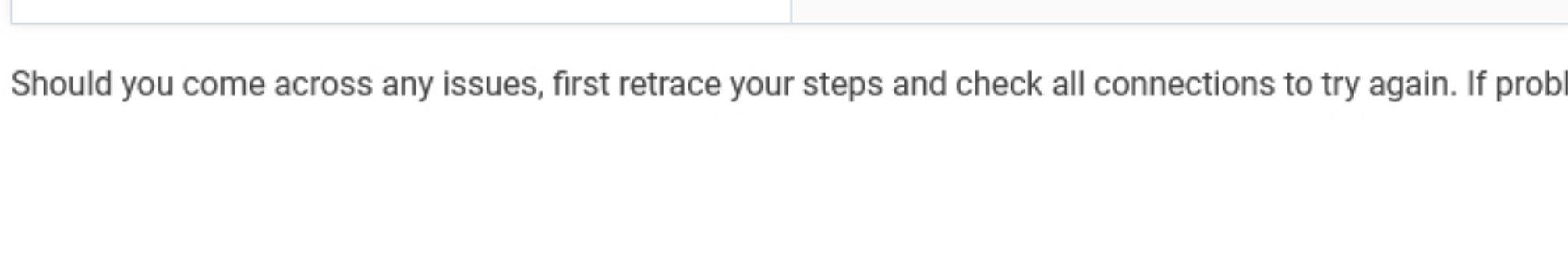
Step 15 - Connecting the tube and cable

Connect the PTFE tube by simply pushing it against the PTFE outlet at the back of the machine, and connect the 4-pin Bambu bus cable.



How to verify completion/success

Connect the power cord and turn on the power. On the display screen, press the AMS label on the screen as shown below, it will display the AMS control panel. Press "Load" to run the



Should you come across any issues, first retrace your steps and check all connections to try again. If problems persist, contact the service team for further assistance.