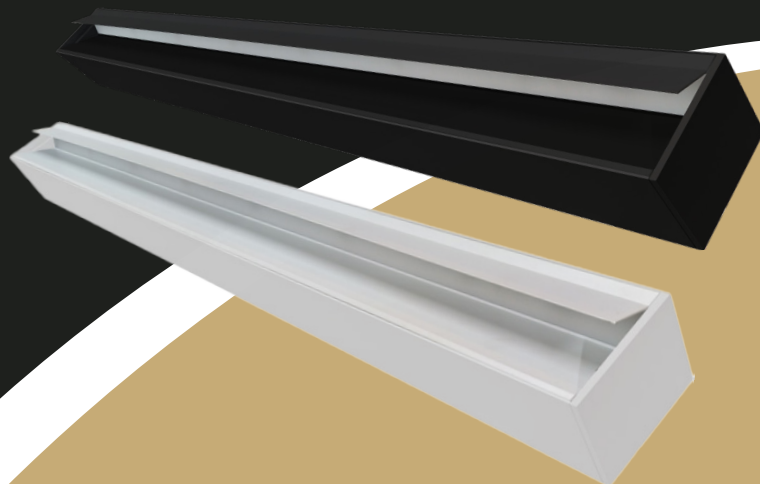


REECO WALL WASH SERIES



Description

The **Reeco Wall Wash** architectural linear LED light offers premium light diffusion over lightweight impact resistant opal polycarbonate lens with different mounting system. This ultra-efficient versatile LED linear fixture can meet the challenges of the restaurant, retail, industrial, commercial and task lighting applications. It can create a functional yet relaxing atmosphere and provide an even wash of light within a space.

Reeco Wall Wash has a performance engineered optical lens assembly that delivers unique beam angles and reduces glare. It also uses high quality LED chips to provide high efficiency, heat dissipation, stability, and lumen maintenance.

Seamless, continuous run connections. All connectors are lit (down only).

Low profile design optimizes shipping, storage, and handling.

Available in various sizes/wattages: 2'(20W), 4'(40W) and 8'(80W) with an efficacy of 90 lumen/watt.

IP20 rated.

CUNV 120-347V

Electrical Specifications

CCT: 3000K/3500K/4000K/5000K
 Efficacy: 90 LM/W
 Power factor: >0.9
 CRI: >80
 0-10V Dimming
 Operating Temperature: -30~40°C (-22~104°F)
 Standard 2KV Surge Protection

The standard length of power cord is 0.8m/2.62ft for 2ft fixture, 1.5m/4.9ft for 4ft fixture and 2.5m/8.2ft for 8ft fixture. The standard finish of power cord is White for white fixture and Black for black fixture.

Certifications and Warranty

CE and cULus Listed with 5 year warranty

