

**Description**

The **Reeco Wall Wash** architectural linear LED light offers premium light diffusion over lightweight impact resistant opal polycarbonate lens with different mounting system. This ultra-efficient versatile LED linear fixture can meet the challenges of the restaurant, retail, industrial, commercial and task lighting applications. It can create a functional yet relaxing atmosphere and provide an even wash of light within a space.

**Reeco Wall Wash** has a performance engineered optical lens assembly that delivers unique beam angles and reduces glare. It also uses high quality LED chips to provide high efficiency, heat dissipation, stability, and lumen maintenance.

Seamless, continuous run connections. All connectors are lit (down only).

Low profile design optimizes shipping, storage, and handling.

Available in various sizes/wattages: 2'(20W), 4'(40W) and 8'(80W) with an efficacy of 90 lumen/watt.

IP20 rated.

**CUNV 120-347V**

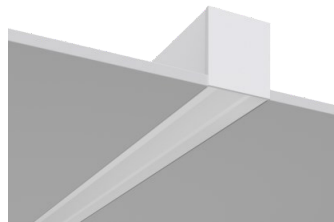
**Electrical Specifications**

CCT: 3000K/3500K/4000K/5000K  
 Efficacy: 90 LM/W  
 Power factor: >0.9  
 CRI: >80  
 0-10V Dimming  
 Operating Temperature: -30~40°C (-22~104°F)  
 Standard 2KV Surge Protection

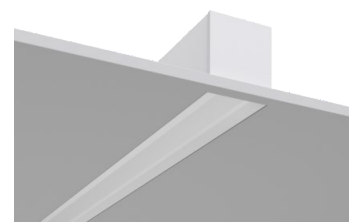
The standard length of power cord is 0.8m/2.62ft for 2ft fixture, 1.5m/4.9ft for 4ft fixture and 2.5m/8.2ft for 8ft fixture. The standard finish of power cord is White for white fixture and Black for black fixture.

**Certifications and Warranty**

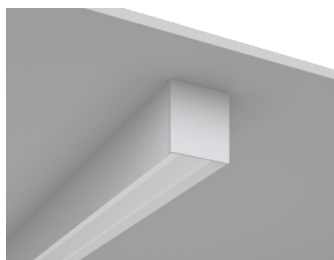
CE and cULus Listed with 5 year warranty



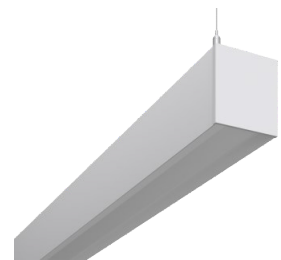
**Recessed Trim Version**



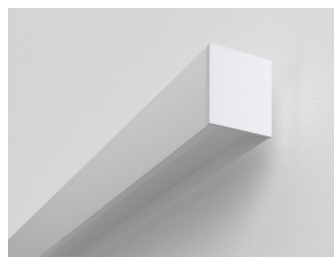
**Recessed Trimless Version**



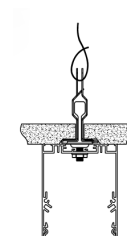
**Surface Mount**



**Suspended**

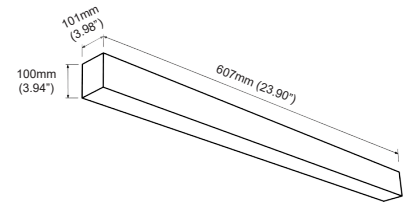
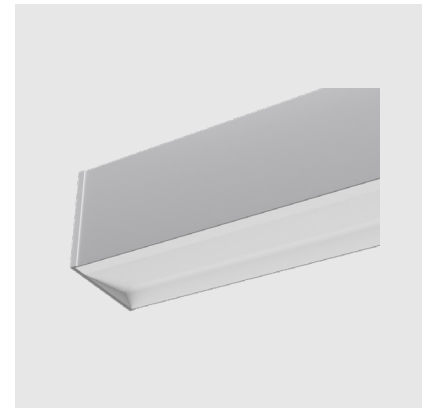


**Wall Mount**



**Surface Mount T-Bar**

# REECO WALL WASH 20W



## Product Information

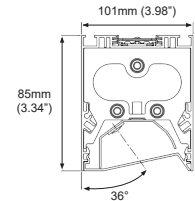
Installation:	Surface Mount, Suspended, Wall Mount
Material:	Aluminum
Finish:	High reflectance baked enamel
System power (W):	20
Fixture lumen output (lm):	1800
System efficiency (lm/W):	90
Lumen Maintenance (hrs):	50,000

## Packaging

Net weight lamp (kg/lb):	2.00 / 4.41
Gross weight carton (kg/lb):	13.00 / 28.66
Master carton dimensions (mm/in):	645x260x250 / 25.39x10.24x9.84
Quantity per carton:	4

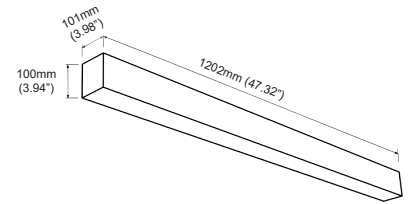
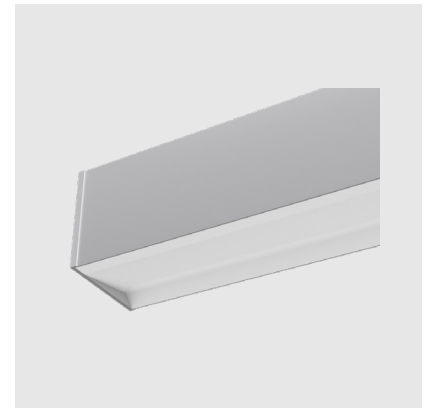
## Code composition

Series	Model	Size	Mounting	Luminous Ways	Wattage-Lumens
LN Linear	REWW Reeco Wall Wash	2F 2 Feet	<b>CM</b> Surface Mount (Standard) <b>SP</b> Suspended <b>WM</b> Wall Mount <b>RT</b> Recessed/Trim <b>RTL</b> Recessed/Trimless <b>CMTB</b> Surface Mount T-Bar	WW Wall Wash	20W-18L 20W-1800lm



CCTS	CRI	Voltage	Dimming	Fixture Finish	Accessories
CCTS 3000K/3500K/4000K/5000K (Selectable)	80 80+	CUNV 120-347V	D 0-10V Dimming	<b>WH</b> White <b>BK</b> Black	<b>NA</b> No Accessories <b>MF</b> Mud Flange <b>EB1</b> Emergency Driver & Battery (CUNV 120-347V)

# REECO WALL WASH 40W



## Product Information

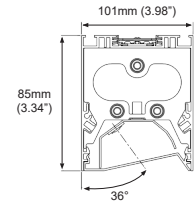
Installation:	Surface Mount, Suspended, Wall Mount
Material:	Aluminum
Finish:	High reflectance baked enamel
System power (W):	40
Fixture lumen output (lm):	3600
System efficiency (lm/W):	90
Lumen Maintenance (hrs):	50,000

## Packaging

Net weight lamp (kg/lb):	4.50 / 9.92
Gross weight carton (kg/lb):	20.00 / 44.09
Master carton dimensions (mm/in):	1240x260x250 / 48.82x10.24x9.84
Quantity per carton:	4

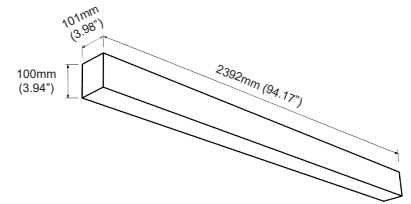
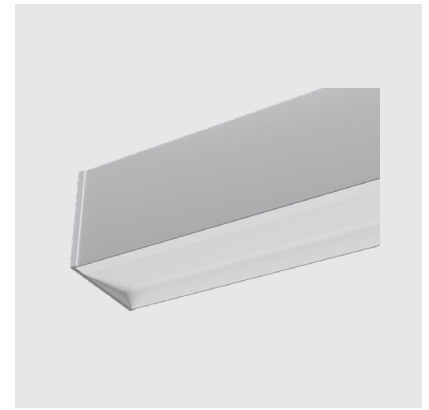
## Code composition

Series	Model	Size	Mounting	Luminous Ways	Wattage-Lumens
LN Linear	REWW Reeco Wall Wash	4F 4 Feet	<b>CM</b> Surface Mount (Standard) <b>SP</b> Suspended <b>WM</b> Wall Mount <b>RT</b> Recessed/Trim <b>RTL</b> Recessed/Trimless <b>CMTB</b> Surface Mount T-Bar	WW Wall Wash	40W-36L 40W-3600lm



CCTS	CRI	Voltage	Dimming	Fixture Finish	Accessories
CCTS 3000K/3500K/4000K/5000K (Selectable)	80 80+	CUNV 120-347V	D 0-10V Dimming	<b>WH</b> White <b>BK</b> Black	<b>NA</b> No Accessories <b>MF</b> Mud Flange <b>EB2</b> Emergency Driver & Battery (CUNV 120-347V)

# REECO WALL WASH 80W



## Product Information

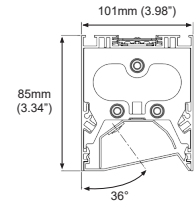
Installation:	Surface Mount, Suspended, Wall Mount
Material:	Aluminum
Finish:	High reflectance baked enamel
System power (W):	80
Fixture lumen output (lm):	7200
System efficiency (lm/W):	90
Lumen Maintenance (hrs):	50,000

## Packaging

Net weight lamp (kg/lb):	6.75 / 14.88
Gross weight carton (kg/lb):	28.0 / 61.73
Master carton dimensions (mm/in):	2430x260x250 / 95.67x10.24x9.84
Quantity per carton:	4

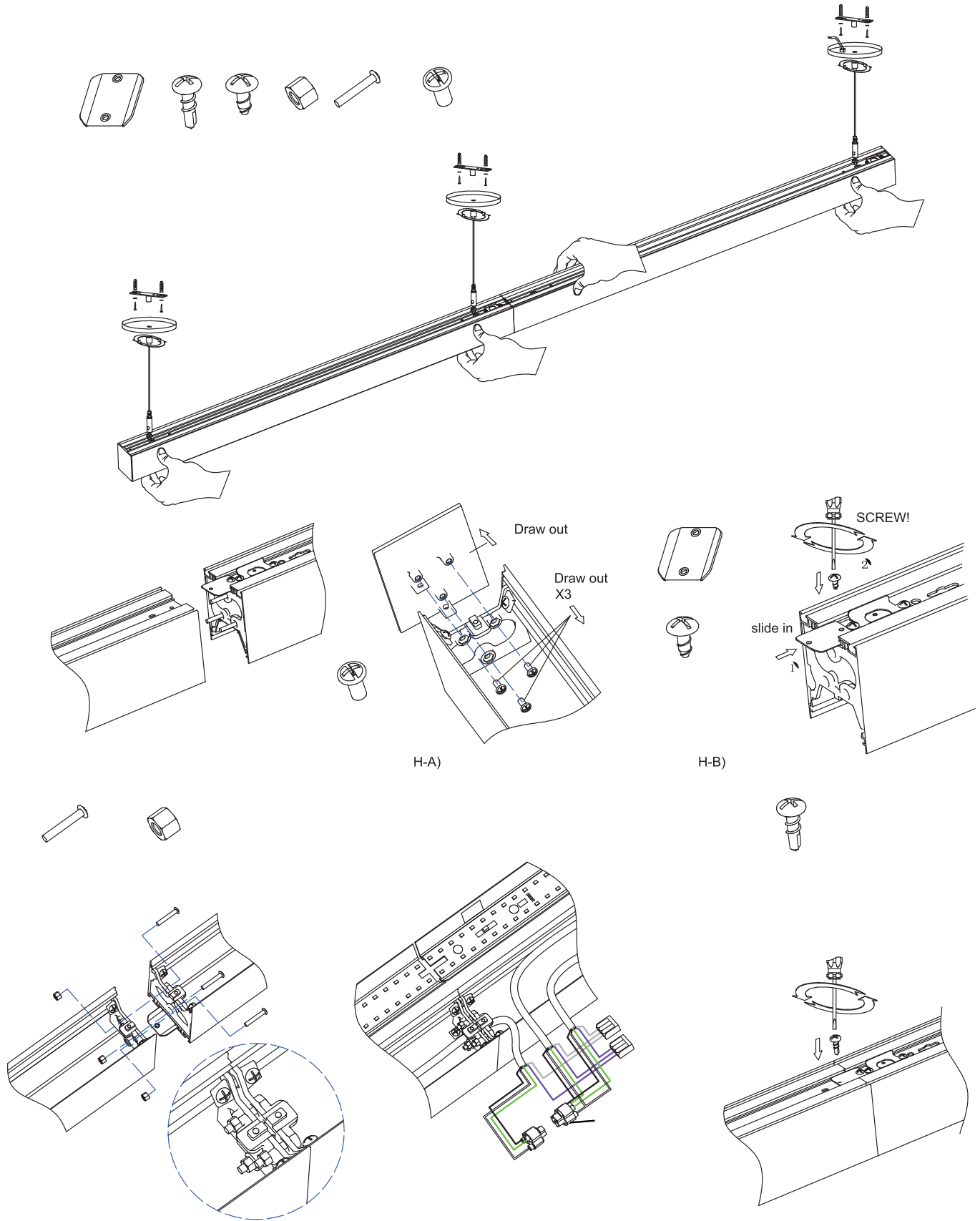
## Code composition

Series	Model	Size	Mounting	Luminous Ways	Wattage-Lumens
LN Linear	REWW Reeco Wall Wash	8F 8 Feet	<b>CM</b> Surface Mount (Standard) <b>SP</b> Suspended <b>WM</b> Wall Mount <b>RT</b> Recessed/Trim <b>RTL</b> Recessed/Trimless <b>CMTB</b> Surface Mount T-Bar	WW Wall Wash	80W-72L 80W-7200lm



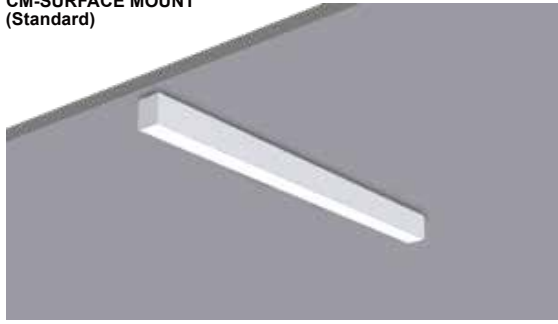
CCTS	CRI	Voltage	Dimming	Fixture Finish	Accessories
CCTS 3000K/3500K/4000K/5000K (Selectable)	80 80+	CUNV 120-347V	D 0-10V Dimming	<b>WH</b> White <b>BK</b> Black	<b>NA</b> No Accessories <b>MF</b> Mud Flange <b>EB2</b> Emergency Driver & Battery (CUNV 120-347V)

# SEAMLESS CONTINUOUS RUN CONNECTORS

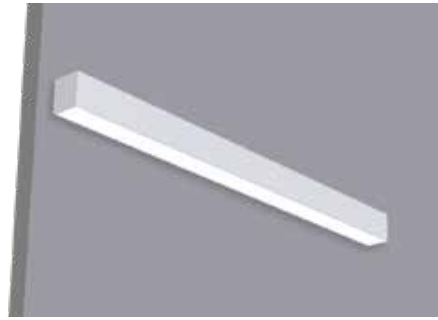


# INSTALLATION OPTIONS

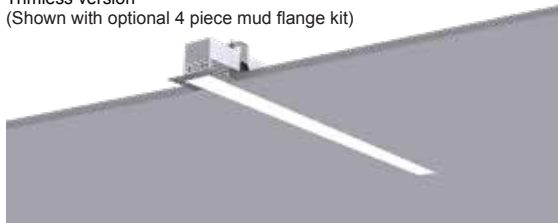
**CM-SURFACE MOUNT**  
(Standard)



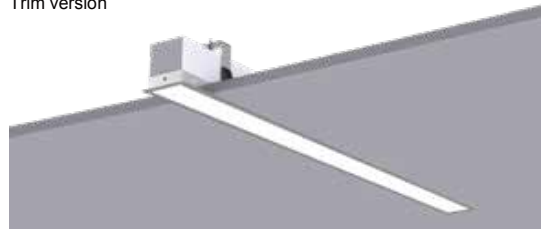
**WM-WALL MOUNT**



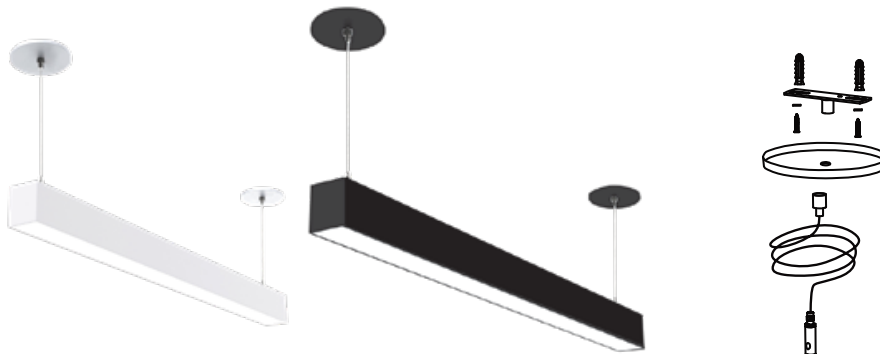
**RTL-RECESSED**  
Trimless version  
(Shown with optional 4 piece mud flange kit)



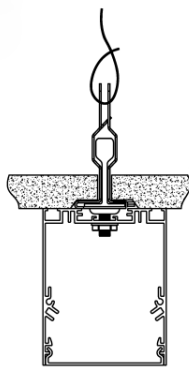
**RT-RECESSED**  
Trim version



**SP-SUSPENDED**  
(Includes 1 pair 5 ft cables and 2 canopy covers)

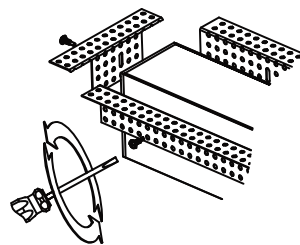


**CMTB-SURFACE MOUNT T-BAR**



**CMTB**

**MUD FLANGE**



**LN-RE-MF**

## ACCESSORIES

### EMERGENCY DRIVER & BATTERY (CUNV 120-347V)

EB1



EB2



Fixture	Emergency Driver	Output Power	Emergency Time	Installation	Voltage
2ft 20W	EB1	8W	90 mins	Integral	CUNV 120-347V
4ft 40W	EB2	15W	90 mins	Integral	CUNV 120-347V
8ft 80W	EB2	15W	90 mins	Integral	CUNV 120-347V