

FOODPRO LINEAR SERIES



Description

FoodPro Linear High Bay is a cost efficient commercial lighting fixture with high efficiency, high CRI about Ra>80, and CUL, DLC and NSF Approvals. With an incredible output of 135Lm/W, this energy efficient LED lighting fixture can be operated on AC 100-277V or 200-480V. This high bay's frame and construction are extremely durable and simple to install. A non-reflective Aluminum frame and a rugged surface are used in the design of the Food Pro Linear High Bay Light. The fixtures are covered with a double layer of paint to improve visibility and endurance. The lifetime of the LEDs is greater than 50,000 hours. These are built for food processing, preparation, manufacturing and handling applications. They have an IP69K waterproof rating, making them ideal for food splash zones.

Electrical Specifications

Available Wattages: 80W, 120W, 160W, 200W and 300W
 Lumen Efficiency: 135 lm/W
 CRI: >80
 Power Factor: >0.95
 Lumen Maintenance: L70 / B20 @50,000 hours
 Working Temperature: -40°C to +45°C (-40°F to +113°F) Available Input
 Voltages: AC 100-277V UNV
 and AC 200-480V HV
 Beam Angle: 60°, 90°, 120° (Standard)
 Color Temperature: 3000K, 4000K, 5000K, 6500K
 Standard Power Cable: 2m / 6ft (White)
 4KV Standard Surge Protection
 10KV Optional Surge Protection

Mounting options

CM Surface Mount (Standard)
 SP Suspended Cable Length 2m / 6ft

Certifications and Warranty

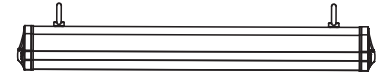
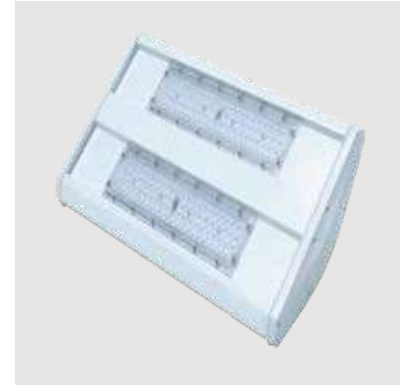
- CUL and DLC listed
- Water Proof and IP69K Rated
- Sustainability Certified by NSF
- Restriction of Hazardous Substances Directive 2002/95/EC(RoHS) Compliant
6 year warranty



FOOD PRO LINEAR 80W



High Bay Lights | S.2



Product Information

80W

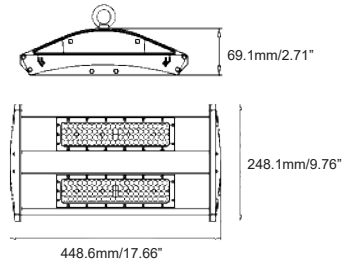
Installation:	Surface Mount (Standard), Suspended
Material:	Aluminum
Finish:	White
System power (W):	80
Fixture lumen output (lm):	10800
System efficiency (lm/W):	135

Packaging

New weight lamp (kg/lb):	3.5 / 7.72
Gross weight carton (kg/lb):	4.0 / 8.82
Master carton dimensions (mm/in):	504x307x257 / 19.8x12.1x10.1
Quantity per carton:	1

Code composition

Series	Model	Size	Mounting	Wattage-Lumens	Optics
HB High Bay	FPL Food Pro Linear	1.5F 1.5 Feet	CM Surface Mount (Standard)	80W-108L 80W-10800lm	120 120D (Standard)
			SP Suspended		90 90D
					60 60D

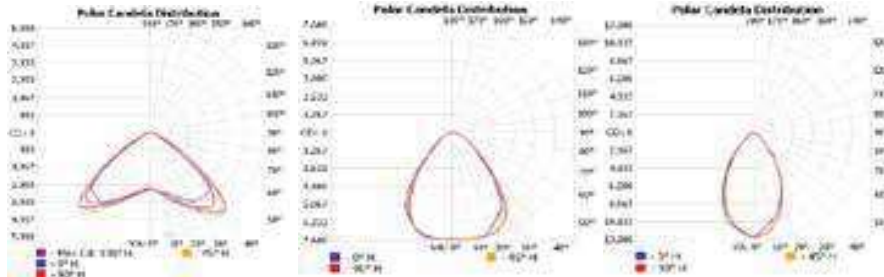


CCTs	CRI	Voltage	Dimming	Fixture Finish	Accessories
30K 3000K	80 80+	UNV 100-277V	D 0-10V Dimming	WH White (Standard)	NA No Accessories
40K 4000K		HV 200-480V		SL Silver	ACC Anti Corrosive Coating
50K 5000K					OS Microwave Occupancy Sensor
65K 6500K					OSBT Microwave Bluetooth Sensor
					PIR PIR Occupancy Sensor
					RCOS Remote Control for Both Occupancy Sensors
					EB Emergency Battery
					M10-1/4" M10-1/4" Adaptor
					M10-1/2" M10-1/2" Adaptor
					M10-3/4" M10-3/4" Adaptor
					SPD10 10KV Surge Protection Devie (Optional)

Standard
80W-120D-50K-CRI80

80W-90D-50K-CRI80

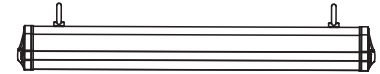
80W-60D-50K-CRI80



FOOD PRO LINEAR 120W



High Bay Lights | S.3



Product Information

120W

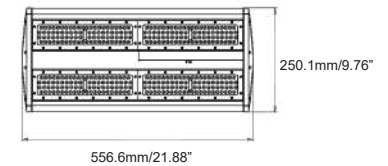
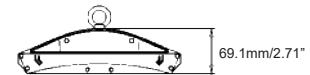
Installation:	Surface Mount (Standard), Suspended
Material:	Aluminum
Finish:	White
System power (W):	120
Fixture lumen output (lm):	16200
System efficiency (lm/W):	135

Packaging

New weight lamp (kg/lb):	5.3 / 11.68
Gross weight carton (kg/lb):	6.1 / 13.45
Master carton dimensions (mm/in):	610x307x257 / 24.0x12.1x10.1
Quantity per carton:	1

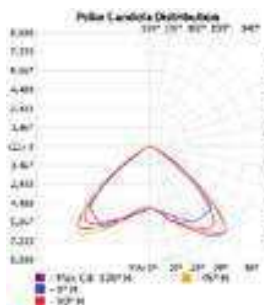
Code composition

Series	Model	Size	Mounting	Wattage-Lumens	Optics
HB	High Bay	FPL Food Pro Linear	2F 2 Feet	CM Surface Mount (Standard) SP Suspended	120W-162L 120W-16200lm 120 120D (Standard) 90 90D 60 60D

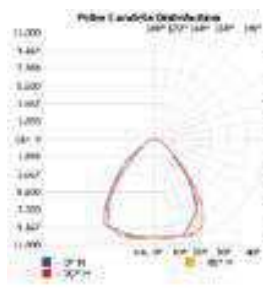


CCTs	CRI	Voltage	Dimming	Fixture Finish	Accessories
30K 3000K	80 80+	UNV 100-277V	D 0-10V Dimming	WH White (Standard)	NA No Accessories
40K 4000K		HV 200-480V		SL Silver	ACC Anti Corrosive Coating
50K 5000K					OS Microwave Occupancy Sensor
65K 6500K					OSBT Microwave Bluetooth Sensor
					PIR PIR Occupancy Sensor
					RCOS Remote Control for Both Occupancy Sensors
					EB Emergency Battery
					M10-1/4" M10-1/4" Adaptor
					M10-1/2" M10-1/2" Adaptor
					M10-3/4" M10-3/4" Adaptor
					SPD10 10KV Surge Protection Devie (Optional)

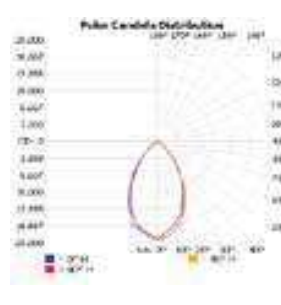
Standard
120W-120D-50K-CRI80



120W-90D-50K-CRI80



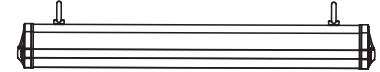
120W-60D-50K-CRI80



FOOD PRO LINEAR 160W



High Bay Lights | S.4



Product Information

160W

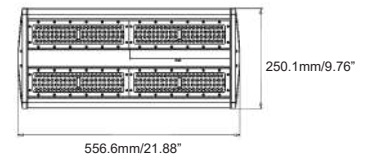
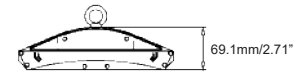
Installation:	Surface Mount (Standard), Suspended
Material:	Aluminum
Finish:	White
System power (W):	120
Fixture lumen output (lm):	21600
System efficiency (lm/W):	135

Packaging

New weight lamp (kg/lb):	5.3 / 11.68
Gross weight carton (kg/lb):	6.1 / 13.45
Master carton dimensions (mm/in):	610x257x307 / 24.0x10.1x12.0
Quantity per carton:	1

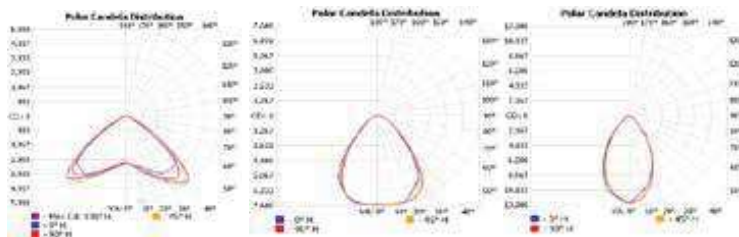
Code composition

Series	Model	Size	Mounting	Wattage-Lumens	Optics
HB High Bay	FPL Food Pro Linear	2F 2 Feet	CM Surface Mount (Standard) SP Suspended	160W-216L 160W-21600lm	120 120D (Standard) 90 90D 60 60D



CCTs	CRI	Voltage	Dimming	Fixture Finish	Accessories
30K 3000K	80 80+	UNV 100-277V	D 0-10V Dimming	WH White (Standard)	NA No Accessories
40K 4000K		HV 200-480V		SL Silver	ACC Anti Corrosive Coating
50K 5000K					OS Microwave Occupancy Sensor
65K 6500K					OSBT Microwave Bluetooth Sensor
					PIR PIR Occupancy Sensor
					RCOS Remote Control for Both Occupancy Sensors
					EB Emergency Battery
					M10-1/4" M10-1/4" Adaptor
					M10-1/2" M10-1/2" Adaptor
					M10-3/4" M10-3/4" Adaptor
					SPD10 10KV Surge Protection Devie (Optional)

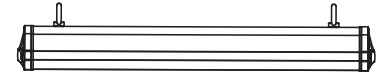
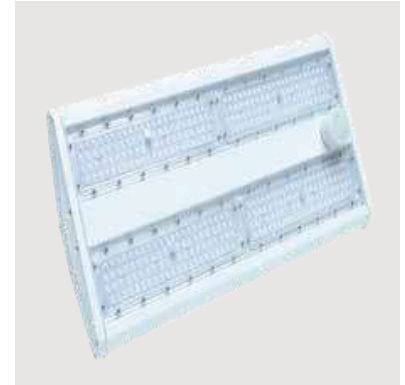
Standard
160W-120D-50K-CRI80 160W-90D-50K-CRI80 160W-60D-50K-CRI80



FOOD PRO LINEAR 200W



High Bay Lights | S.5



Product Information

200W

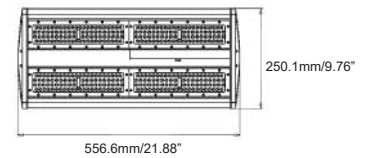
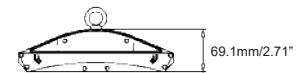
Installation:	Surface Mount (Standard), Suspended
Material:	Aluminum
Finish:	White
System power (W):	200
Fixture lumen output (lm):	27000
System efficiency (lm/W):	135

Packaging

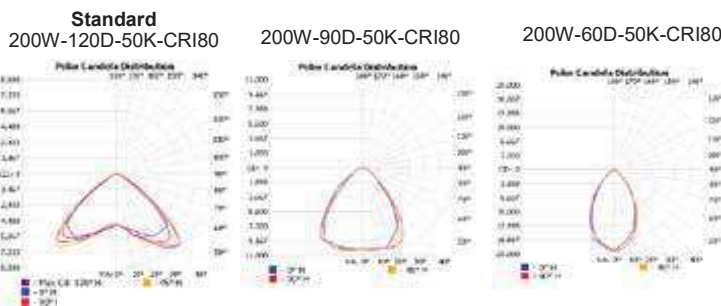
New weight lamp (kg/lb):	5.3 / 11.68
Gross weight carton (kg/lb):	6.1 / 13.45
Master carton dimensions (mm/in):	610x257x307 / 24.0x10.1x12.0
Quantity per carton:	1

Code composition

Series	Model	Size	Mounting	Wattage-Lumens	Optics
HB High Bay	FPL Food Pro Linear	2F 2 Feet	CM Surface Mount (Standard) SP Suspended	200W-270L 200W-27000lm	120 120D (Standard) 90 90D 60 60D



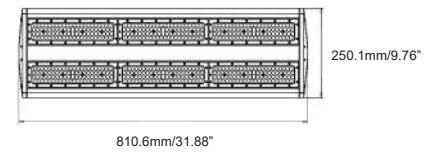
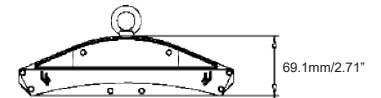
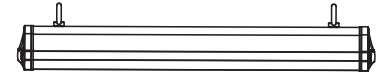
CCTs	CRI	Voltage	Dimming	Fixture Finish	Accessories
30K 3000K	80 80+	UNV 100-277V	D 0-10V Dimming	WH White (Standard)	NA No Accessories
40K 4000K		HV 200-480V		SL Silver	ACC Anti Corrosive Coating
50K 5000K					OS Microwave Occupancy Sensor
65K 6500K					OSBT Microwave Bluetooth Sensor
					PIR PIR Occupancy Sensor
					RCOS Remote Control for Both Occupancy Sensors
					EB Emergency Battery
					M10-1/4" M10-1/4" Adaptor
					M10-1/2" M10-1/2" Adaptor
					M10-3/4" M10-3/4" Adaptor
					SPD10 10KV Surge Protection Devie (Optional)



FOOD PRO LINEAR 300W



High Bay Lights | S.6



Product Information

300W

Installation:	Surface Mount (Standard), Suspended
Material:	Aluminum
Finish:	White
System power (W):	300
Fixture lumen output (lm):	40500
System efficiency (lm/W):	135

Packaging

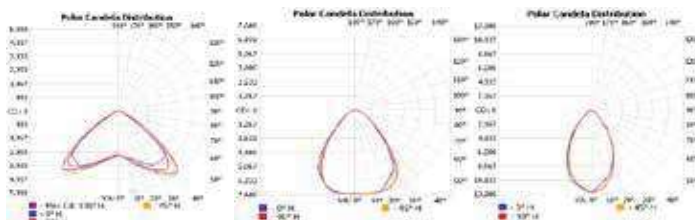
New weight lamp (kg/lb):	7.1 / 15.65
Gross weight carton (kg/lb):	8.1 / 17.85
Master carton dimensions (mm/in):	860x257x307 / 33.85x10.1x12.0
Quantity per carton:	1

Code composition

Series	Model	Size	Mounting	Wattage-Lumens	Optics
HB High Bay	FPL Food Pro Linear	3F 3 Feet	CM Surface Mount (Standard) SP Suspended	200W-270L 200W-27000lm	120 120D (Standard) 90 90D 60 60D

CCTs	CRI	Voltage	Dimming	Fixture Finish	Accessories
30K 3000K	80 80+	UNV 100-277V	D 0-10V Dimming	WH White (Standard)	NA No Accessories
40K 4000K		HV 200-480V		SL Silver	ACC Anti Corrosive Coating
50K 5000K					OS Microwave Occupancy Sensor
65K 6500K					OSBT Microwave Bluetooth Sensor
					PIR PIR Occupancy Sensor
					RCOS Remote Control for Both Occupancy Sensors
					EB Emergency Battery
					M10-1/4" M10-1/4" Adaptor
					M10-1/2" M10-1/2" Adaptor
					M10-3/4" M10-3/4" Adaptor
					SPD10 10KV Surge Protection Devie (Optional)

Standard
300W-120D-50K-CRI80 300W-90D-50K-CRI80 300W-60D-50K-CRI80



Mounting Accessories

Surface Mount (Standard)



Suspended Mount (Option)
Cable Length 2m / 6ft



OS (Microwave
Occupancy Sensor)



OSBT (Microwave
Bluetooth Sensor)



PIR (PIR Occupancy
Sensor)



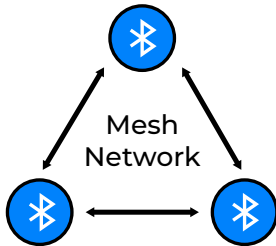
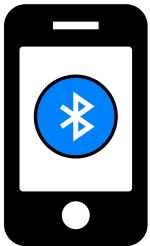
Emergency Battery



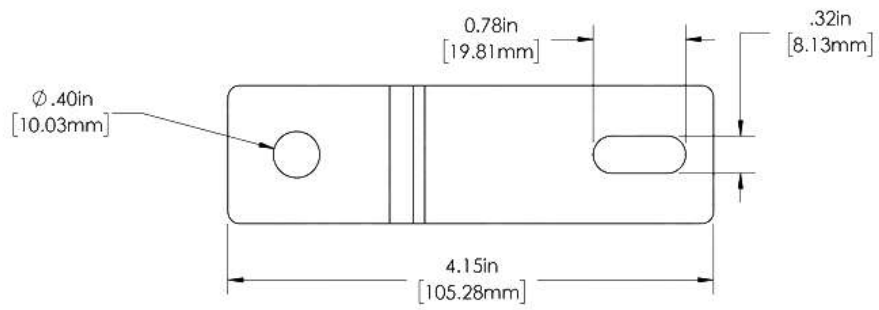
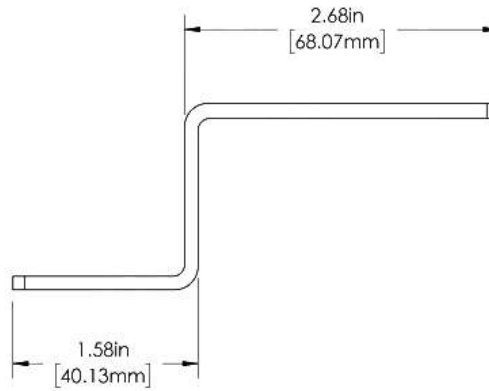
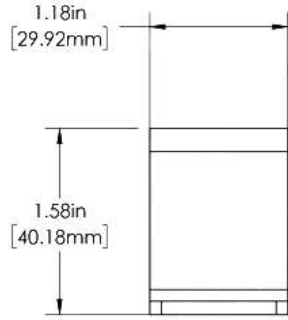
Emergency Battery
Remote



Bluetooth Mesh Network

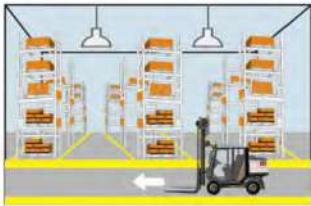


SURFACE MOUNT DIMENSIONS

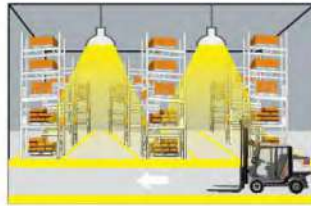


OSBT (Microwave Bluetooth Sensor)
FUNCTION

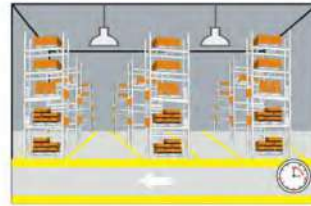
1) On/OFF Function (stand-by period be set to “0”s)



1 With sufficient ambient light, the light will not be switched on even if with motion signal.

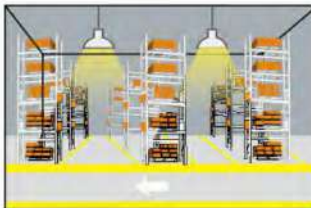


2 With insufficient ambient light, the sensor switches on the light when motion is detected.

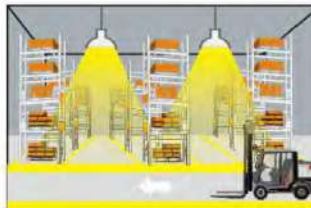


3 After elapse of hold time, the sensor switches off the light when no motion is detected.

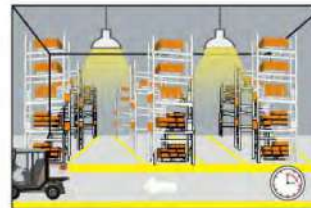
2) 2-step dimming function (stand-by period be set to “+∞”)



1 If there is no motion detected, the light will be remained at a low light level all the time.

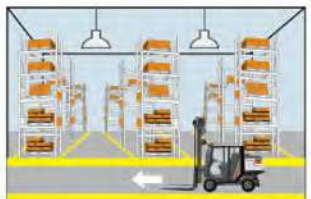


2 When motion is detected, the sensor will switch on the light to 100% brightness

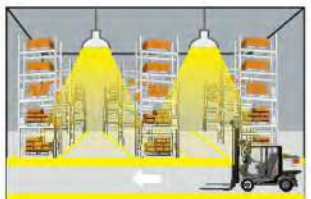


3 After elapse of hold time, the sensor dims the light at the present low light level if no motion is detected.

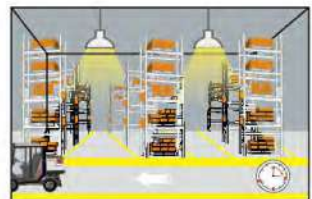
3) 3-step dimming function (stand-by period be set to “10S/1min/3min/5min/10min/30min”)



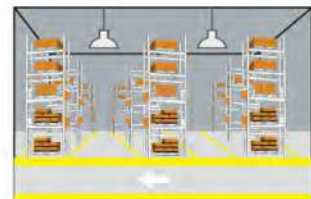
1 With sufficient ambient light, the light will not be switched on even if with motion signal.



2 With insufficient ambient light, the sensor switches on the light when motion is detected.

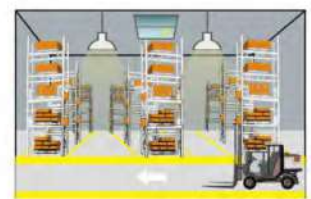


3 After elapse of hold time, the sensor dims the light at a low light level if no new motion is detected.

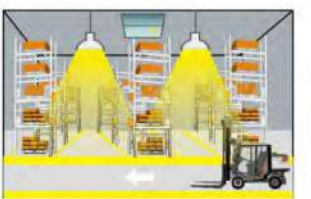


4 After elapse of standby period, the sensor switches off the light if no new motion is detected in the detection zone.

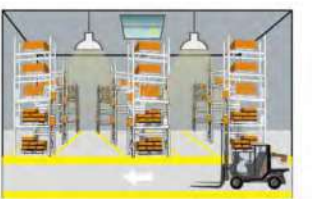
4) Daylight priority ((Set Stand-by Period to “DH Mode+5lux/15Lux/30Lux/50Lux/100lux/150lux”)



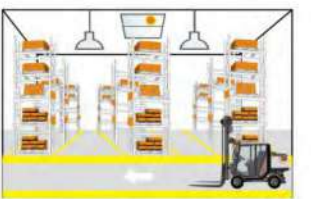
1 Lamps turn on at a low light level in the night.



2 Motion detected, lamp automatically lights up to 100%.

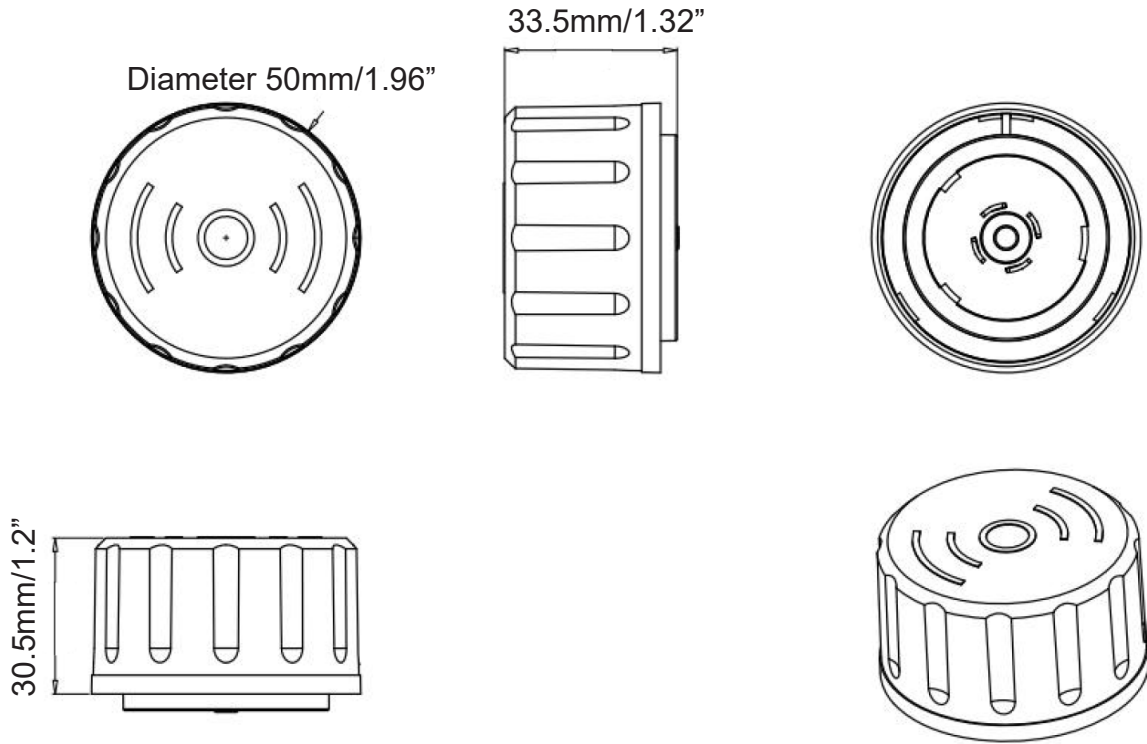


3 After hold time, the lamp gradually dims to a low light level if no movement detected.

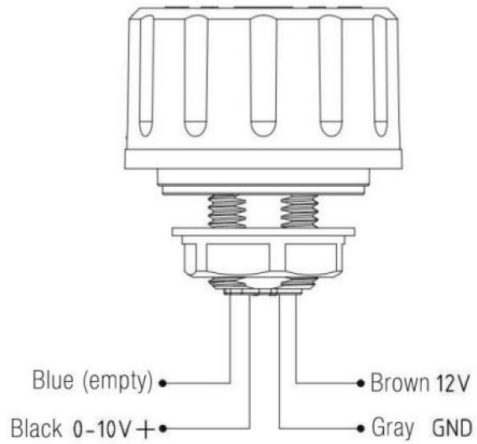


4 Lamps turn off under enough ambient light.

OSBT (Microwave Bluetooth Sensor) DIMENSIONS



WIRING



TUYA SMART APP



Must be used with **Tuya Smart App**

RCOS Remote Control for Both Occupancy Sensors (Microwave and PIR)

Remote Control Setting	Button	Remarks																												
	ON/OFF	Press the "ON/OFF" button, the light goes to constant on/off mode, sensor is disabled. Press "Reset" "Auto mode" button to quit from this mode and the sensor starts to work. No memory for ON-OFF setting after power off. Sensor mode will auto recover after restart power supply.																												
	Reset	Press "Reset" button, all parameters are same as setting of DIP switch or factory settings.																												
	Sensor motion	Press "Sensor motion" button, the light quits from the constant on/ off mode, and the sensor starts to work (The latest setting stays in validity)																												
	DIM Test	Press "DIM Test" button, the 1-10 V dimming works to test whether the 1-10Vdc dimming ports are connected properly. After 2s, it returns to the latest setting automatically.																												
	Override DH	Long press 3s, Daylight priority mode will be switched to daylight threshold mode, lux value will go back to previous one.																												
	DIM+ DIM-	Short press "Dim+/Dim-" button to Set the output lumen level, each press will $\pm 2\%$ light level.																												
	DH Mode	Long press >3s, sensor will be switched to daylight priority mode, if preset daylight value is Disable, press DH Mode can not start daylight priority mode.																												
	Q1 Q2 Q3	<table border="1"> <thead> <tr> <th>Scene Options</th> <th>Detection Area</th> <th>Hold Time</th> <th>Stand-by period</th> <th>Stand-by dim level</th> <th>Daylight Sensor</th> <th>Induction model</th> </tr> </thead> <tbody> <tr> <td>Q51</td> <td>100%</td> <td>5min</td> <td>10min</td> <td>10%</td> <td>30Lux</td> <td>HS</td> </tr> <tr> <td>Q52</td> <td>100%</td> <td>10min</td> <td>30min</td> <td>10%</td> <td>Disable</td> <td>HS</td> </tr> <tr> <td>Q53</td> <td>100%</td> <td>20min</td> <td>30min</td> <td>10%</td> <td>Disable</td> <td>HS</td> </tr> </tbody> </table> <p>Note: Detection area / Hold time / Stand-by period / Stand-by dim level / Daylight sensor can be adjusted by pressing the corresponding button. The latest setting will stay valid.</p>	Scene Options	Detection Area	Hold Time	Stand-by period	Stand-by dim level	Daylight Sensor	Induction model	Q51	100%	5min	10min	10%	30Lux	HS	Q52	100%	10min	30min	10%	Disable	HS	Q53	100%	20min	30min	10%	Disable	HS
Scene Options	Detection Area	Hold Time	Stand-by period	Stand-by dim level	Daylight Sensor	Induction model																								
Q51	100%	5min	10min	10%	30Lux	HS																								
Q52	100%	10min	30min	10%	Disable	HS																								
Q53	100%	20min	30min	10%	Disable	HS																								
	TEST 2S	Press the "TEST 2S" button can enter the test mode any time. At the mode, the sensor parameters as below: Detection Area is 100%, Hold Time is 5s, Stand-by Dim Level is 10%, Stand-by Period is 0s, daylight sensor disable. This function only for testing. Quit the mode by pressing "RESET" or any other function buttons.																												
	HS LS	Press "HS" button to set the detection area to be high sensitive. Press "LS" button to set the detection area to be low sensitive. The adjustment bases on the "Detection Area" parameter you set.																												
	Daylight Sensor	Set up daylight threshold: 5Lux/15Lux/30Lux/50Lux/100Lux/150Lux/ Disable																												
	Stand-by period	Set up stand-by time: 0S/10S/1min/3min/5min/10min/30min/+∞																												
	Hold time	Set up hold time: 5S/30S/1min/3min/5min/10min/20min/30min																												
	Stand-by dim level	Set up stand-by dim level: 10%/20%/30%/50%																												
	Detection Area	Set up detection area: 25%/50%/75%/100%																												
	Remote Distance	Toggle button can set the remote distance of remote control and sensor.																												

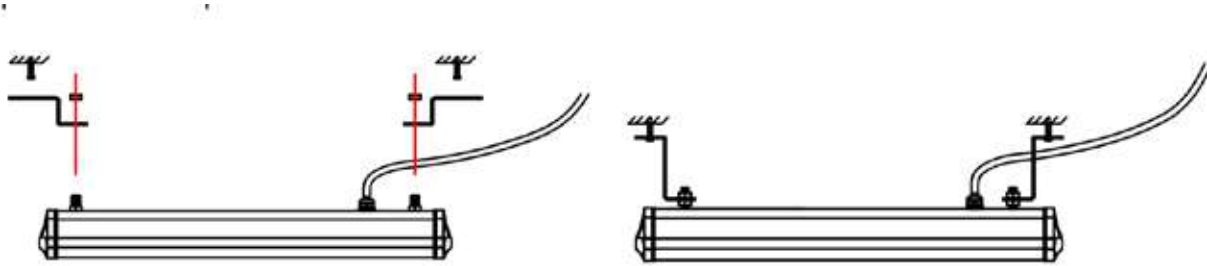
INSTALLATION INSTRUCTION

Surface Mount (Standard)

Step 1: Measure the distance, fix the holder on the wall with expansion screws

Step 2: Fix the light on holder with nuts

Step 3: Connect with power wire



Suspended Mount (Option)

Step 1: Fix the pothook on the wall with expansion screws

Step 2: Hang the light with chain

Step 3: Connect with power wire

