

FOODPRO LINEAR SERIES



Description

FoodPro Linear High Bay is a cost efficient commercial lighting fixture with high efficiency, high CRI about Ra>80, and CUL, DLC and NSF Approvals. With an incredible output of 135Lm/W, this energy efficient LED lighting fixture can be operated on AC 100-277V or 200-480V. This high bay's frame and construction are extremely durable and simple to install. A non-reflective Aluminum frame and a rugged surface are used in the design of the Food Pro Linear High Bay Light. The fixtures are covered with a double layer of paint to improve visibility and endurance.

The lifetime of the LEDs is greater than 50,000 hours. These are built for food processing, preparation, manufacturing and handling applications.

They have an IP69K waterproof rating, making them ideal for food splash zones.

Electrical Specifications

Available Wattages: 80W, 120W, 160W, 200W and 300W
 Lumen Efficiency: 135 lm/W
 CRI: >80
 Power Factor: >0.95
 Lumen Maintenance: L70 / B20 @50,000 hours
 Working Temperature: -40°C to +45°C (-40°F to +113°F)
 Available Input Voltages: AC 100-277V UNV
 and AC 200-480V HV
 Beam Angle: 60°, 90°, 120° (Standard)
 Color Temperature: 3000K, 4000K, 5000K, 6500K
 Standard Power Cable: 2m / 6ft (White)

Mounting options

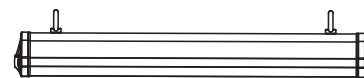
CM Surface Mount (Standard)
 SP Suspended Cable Length 2m / 6ft

Certifications and Warranty

- CUL and DLC listed
- Water Proof and IP69K Rated
- Sustainability Certified by NSF
- Restriction of Hazardous Substances Directive 2002/95/EC(RoHS) Compliant
6 year warranty



FOODPRO LINEAR 80W/120W

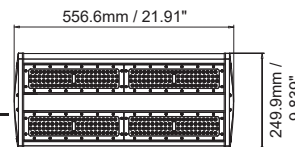
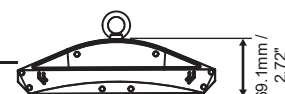


Product Information	80W	120W
Installation:	Surface Mount (Standard), Suspended	
Material:	Aluminum	Aluminum
Finish:	White	White
System power (W):	80	120
Fixture lumen output (lm):	10800	16200
System efficiency (lm/W):	135	135

Packaging	80W	120W
Net weight lamp (kg/lb):	3.5 / 7.72	5.3 / 11.68
Gross weight carton (kg/lb):	4.0 / 8.82	6.1 / 13.45
Master carton dimensions (mm/in):	504x307x257/19.8x12.1x10.1	610x307x257 /24.0x12.1x10.1
Quantity per carton:	1	1

Code composition

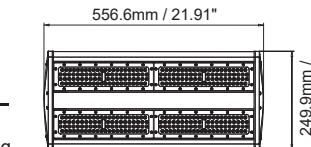
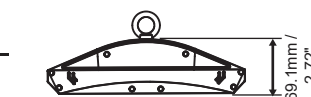
Series	Model	Size	Mounting	Wattage-Lumens	Optics
HB	High Bay	FPL FoodPro Linear	1.5F 1.5 Feet	CM Surface Mount (Standard) SP Suspended	80W-108L 80W-10800lm 120 120D (Standard) 90 90D 60 60D



CCT	CRI	Voltage	Dimming	Finish	Accessories	
30K	3000K	80 80+	UNV 100-277V	D 0-10V Dimming	WH White (Standard)	NA No Accessories ACC Anti Corrosive Coating OS Microwave Occupancy Sensor PIR PIR Occupancy Sensor RCOS Remote Control for Both Occupancy Sensors EB Emergency Battery M10-1/4" M10-1/4" Adaptor M10-1/2" M10-1/2" Adaptor M10-3/4" M10-3/4" Adaptor
40K	4000K	HV 200-480V		SL Silver		
50K	5000K					
65K	6500K					

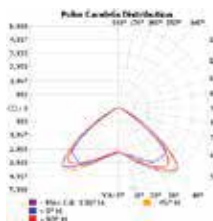
Code composition

Series	Model	Size	Mounting	Wattage-Lumens	Optics
HB	High Bay	FPL FoodPro Linear	2F 2 Feet	CM Surface Mount (Standard) SP Suspended	120W-162L 120W-16200lm 120 120D (Standard) 90 90D 60 60D

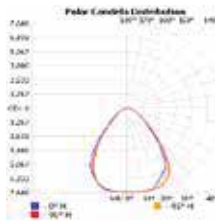


CCT	CRI	Voltage	Dimming	Finish	Accessories	
30K	3000K	80 80+	UNV 100-277V	D 0-10V Dimming	WH White (Standard)	NA No Accessories ACC Anti Corrosive Coating OS Microwave Occupancy Sensor PIR PIR Occupancy Sensor RCOS Remote Control for Both Occupancy Sensors EB Emergency Battery M10-1/4" M10-1/4" Adaptor M10-1/2" M10-1/2" Adaptor M10-3/4" M10-3/4" Adaptor
40K	4000K	HV 200-480V		SL Silver		
50K	5000K					
65K	6500K					

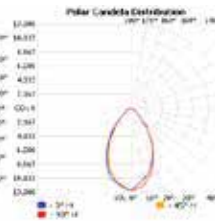
Standard
80W-120D-50K-CRI80



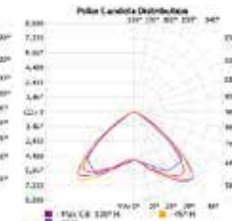
80W-90D-50K-CRI80



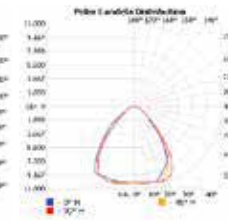
80W-60D-50K-CRI80



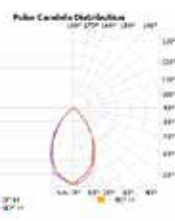
Standard
120W-120D-50K-CRI80



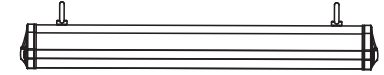
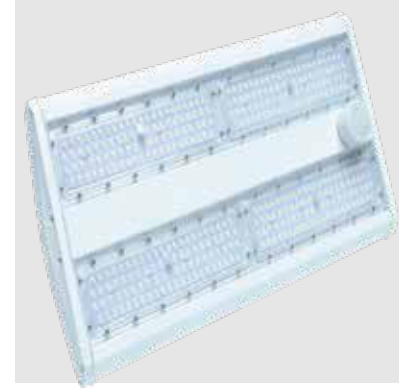
120W-90D-50K-CRI80



120W-60D-50K-CRI80



FOODPRO LINEAR 160W/200W

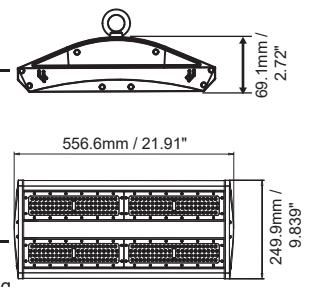


Product Information	160W	200W
Installation:	Surface Mount (Standard), Suspended	
Material:	Aluminum	Aluminum
Finish:	White	White
System power (W):	160	200
Fixture lumen output (lm):	21600	27000
System efficiency (lm/W):	135	135

Packaging	160W	200W
Net weight lamp (kg/lb):	5.3/ 11.68	5.3 / 11.68
Gross weight carton (kg/lb):	6.1/ 13.45	6.1 / 13.45
Master carton dimensions (mm/in):	610x257x307/24.0x10.1x12.0	610x257x307 /24.0x10.1x12.0
Quantity per carton:	1	1

Code composition

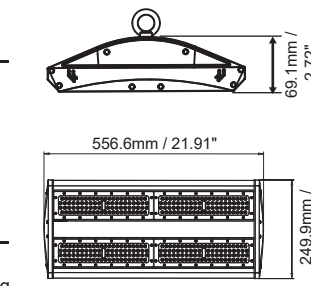
Series	Model	Size	Mounting	Wattage-Lumens	Optics	
HB	High Bay	FPL	FoodPro Linear	2F 2 Feet	CM Surface Mount (Standard) SP Suspended	160W-216L 160W-21600lm 120 120D (Standard) 90 90D 60 60D



CCT	CRI	Voltage	Dimming	Finish	Accessories
30K	3000K	80 80+	UNV 100-277V D 0-10V Dimming	WH White (Standard)	NA No Accessories ACC Anti Corrosive Coating OS Microwave Occupancy Sensor PIR PIR Occupancy Sensor RCOS Remote Control for Both Occupancy Sensors EB Emergency Battery M10-1/4" M10-1/4" Adaptor M10-1/2" M10-1/2" Adaptor M10-3/4" M10-3/4" Adaptor
40K	4000K	HV 200-480V			
50K	5000K			SL Silver	
65K	6500K				

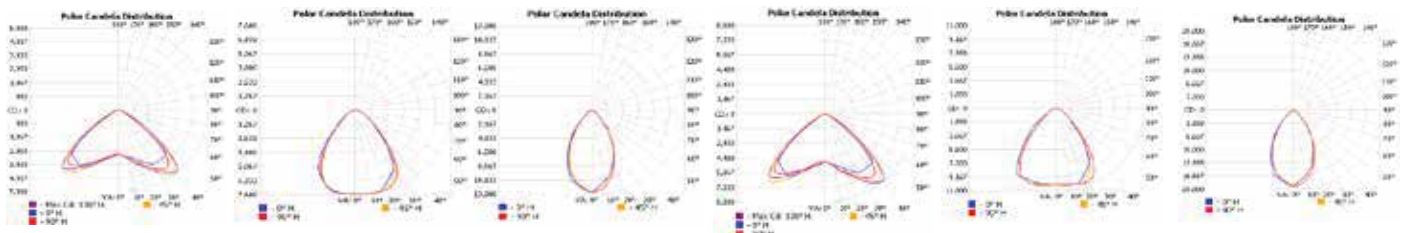
Code composition

Series	Model	Size	Mounting	Wattage-Lumens	Optics	
HB	High Bay	FPL	FoodPro Linear	2F 2 Feet	CM Surface Mount (Standard) SP Suspended	200W-270L 200W-27000lm 120 120D (Standard) 90 90D 60 60D

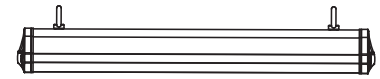


CCT	CRI	Voltage	Dimming	Finish	Accessories
30K	3000K	80 80+	UNV 100-277V D 0-10V Dimming	WH White (Standard)	NA No Accessories ACC Anti Corrosive Coating OS Microwave Occupancy Sensor PIR PIR Occupancy Sensor RCOS Remote Control for Both Occupancy Sensors EB Emergency Battery M10-1/4" M10-1/4" Adaptor M10-1/2" M10-1/2" Adaptor M10-3/4" M10-3/4" Adaptor
40K	4000K	HV 200-480V			
50K	5000K			SL Silver	
65K	6500K				

Standard 160W-120D-50K-CRI80 160W-90D-50K-CRI80 160W-60D-50K-CRI80 Standard 200W-120D-50K-CRI80 200W-90D-50K-CRI80 200W-60D-50K-CRI80



FOODPRO LINEAR 300W



Product Information

300W

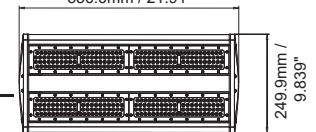
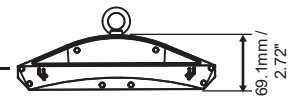
Installation:	Surface Mount (Standard), Suspended
Material:	Aluminum
Finish:	White
System power (W):	300
Fixture lumen output (lm):	40500
System efficiency (lm/W):	135

Packaging

Net weight lamp (kg/lb):	7.1 / 15.65
Gross weight carton (kg/lb):	8.1 / 17.85
Master carton dimensions (mm/in):	860x257x307/33.85x10.1x12.0
Quantity per carton:	1

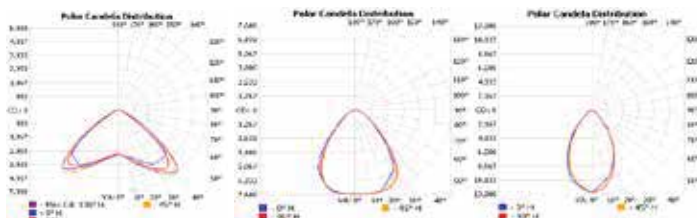
Code composition

Series	Model	Size	Mounting	Wattage-Lumens	Optics		
HB	High Bay	FPL	FoodPro Linear	3F 3 Feet	CM Surface Mount (Standard) SP Suspended	300W-405L 300W-40500lm	120 120D (Standard) 90 90D 60 60D



CCT	CRI	Voltage	Dimming	Finish	Accessories		
30K	3000K	80	80+	UNV 100-277V	D 0-10V Dimming	WH White (Standard)	NA No Accessories ACC Anti Corrosive Coating OS Microwave Occupancy Sensor PIR PIR Occupancy Sensor RCOS Remote Control for Both Occupancy Sensors EB Emergency Battery M10-1/4" M10-1/4" Adaptor M10-1/2" M10-1/2" Adaptor M10-3/4" M10-3/4" Adaptor
40K	4000K	HV	200-480V	SL Silver			
50K	5000K						
65K	6500K						

Standard
300W-120D-50K-CRI80 300W-90D-50K-CRI80 300W-60D-50K-CRI80



Mounting Accessories

Surface Mount (Standard)



Suspended Mount (Option)

Cable Length 2m / 6ft

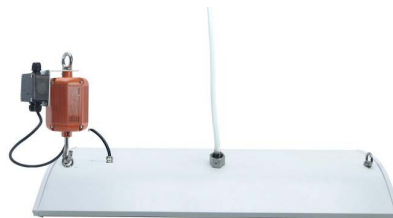


OS (Microwave Occupancy Sensor)

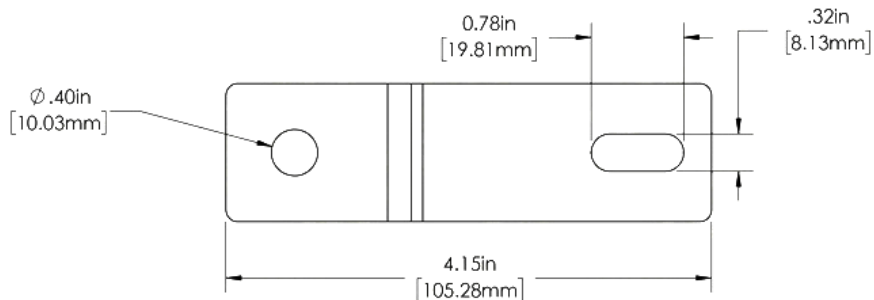
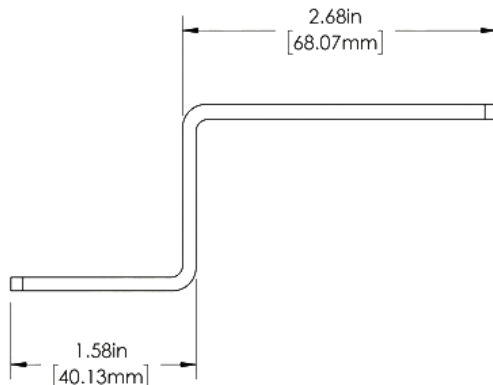
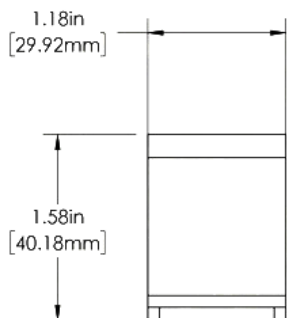
PIR (PIR Occupancy Sensor)

Emergency Battery

Emergency Battery Remote



Surface Mount Dimensions



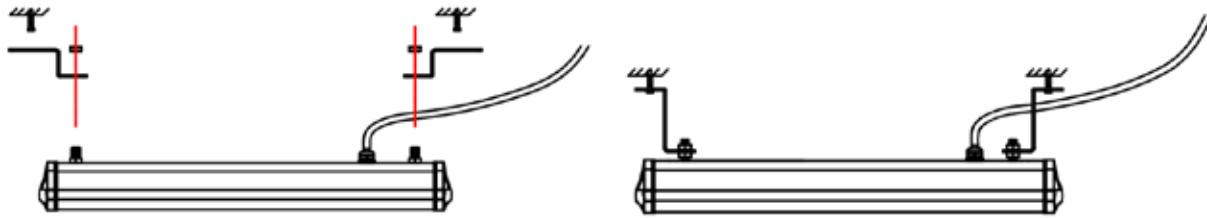
INSTALLATION INSTRUCTION

Surface Mount (Standard)

Step 1: Measure the distance, fix the holder on the wall with expansion screws

Step 2: Fix the light on holder with nuts

Step 3: Connect with power wire

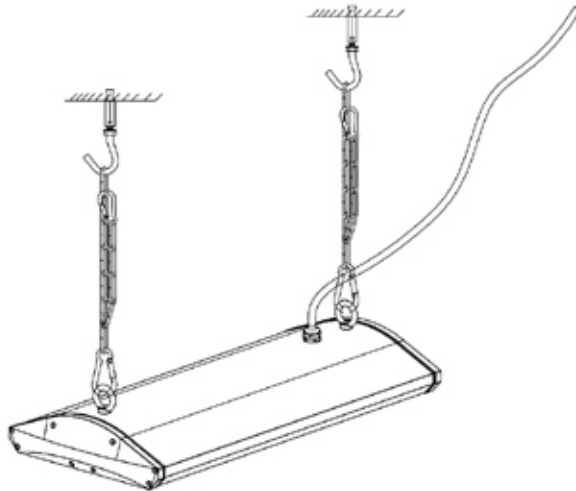


Suspended Mount (Option)

Step 1: Fix the pothook on the wall with expansion screws

Step 2: Hang the light with chain

Step 3: Connect with power wire



RCOS Remote Control for Both Occupancy Sensors (Microwave and PIR)

Remote Control Setting	Button	Remarks																												
	ON/OFF	Press the "ON/OFF" button, the light goes to constant on/off mode, sensor is disabled. Press "Reset" "Auto mode" button to quit from this mode and the sensor starts to work. No memory for ON-OFF setting after power off. Sensor mode will auto recover after restart power supply.																												
	Reset	Press "Reset" button, all parameters are same as setting of DIP switch or factory settings.																												
	Sensor motion	Press "Sensor motion" button, the light quits from the constant on/ off mode, and the sensor starts to work (The latest setting stays in validity)																												
	DIM Test	Press "DIM Test" button, the 1-10 V dimming works to test whether the 1-10Vdc dimming ports are connected properly. After 2s, it returns to the latest setting automatically.																												
	Override DH	Long press 3s, Daylight priority mode will be switched to daylight threshold mode, lux value will go back to previous one.																												
	DIM+ DIM-	Short press "Dim+ /Dim-" button to Set the output lumen level, each press will $\pm 2\%$ light level.																												
	DH Mode	Long press >3s, sensor will be switched to daylight priority mode, if preset daylight value is Disable, press DH Mode can not start daylight priority mode.																												
	Q1 Q2 Q3	<table border="1"> <thead> <tr> <th>Scene Options</th> <th>Detection Area</th> <th>Hold Time</th> <th>Stand-by period</th> <th>Stand-by dim level</th> <th>Daylight Sensor</th> <th>Induction model</th> </tr> </thead> <tbody> <tr> <td>QS1</td> <td>100%</td> <td>5min</td> <td>10min</td> <td>10%</td> <td>30Lux</td> <td>HS</td> </tr> <tr> <td>QS2</td> <td>100%</td> <td>10min</td> <td>30min</td> <td>10%</td> <td>Disable</td> <td>HS</td> </tr> <tr> <td>QS3</td> <td>100%</td> <td>20min</td> <td>30min</td> <td>10%</td> <td>Disable</td> <td>HS</td> </tr> </tbody> </table> <p>Note: Detection area / Hold time / Stand-by period / Stand-by dim level / Daylight sensor can be adjusted by pressing the corresponding button. The latest setting will stay valid.</p>	Scene Options	Detection Area	Hold Time	Stand-by period	Stand-by dim level	Daylight Sensor	Induction model	QS1	100%	5min	10min	10%	30Lux	HS	QS2	100%	10min	30min	10%	Disable	HS	QS3	100%	20min	30min	10%	Disable	HS
Scene Options	Detection Area	Hold Time	Stand-by period	Stand-by dim level	Daylight Sensor	Induction model																								
QS1	100%	5min	10min	10%	30Lux	HS																								
QS2	100%	10min	30min	10%	Disable	HS																								
QS3	100%	20min	30min	10%	Disable	HS																								
	TEST 2S	Press the "TEST 2S" button can enter the test mode any time. At the mode, the sensor parameters as below: Detection Area is 100%, Hold Time is 5s, Stand-by Dim Level is 10%, Stand-by Period is 0s, daylight sensor disable. This function only for testing. Quit the mode by pressing "RESET" or any other function buttons.																												
	HS LS	Press "HS" button to set the detection area to be high sensitive. Press "LS" button to set the detection area to be low sensitive. The adjustment bases on the "Detection Area" parameter you set.																												
	Daylight Sensor	Set up daylight threshold: 5Lux/15Lux/30Lux/50Lux/100Lux/150Lux/ Disable																												
	Stand-by period	Set up stand-by time: 0S/10S/1min/3min/5min/10min/30min/+ ∞																												
	Hold time	Set up hold time: 5S/30S/1min/3min/5min/10min/20min/30min																												
	Stand-by dim level	Set up stand-by dim level: 10%/20%/30%/50%																												
	Detection Area	Set up detection area: 25%/50%/75%/100%																												
	Remote Distance	Toggle button can set the remote distance of remote control and sensor.																												