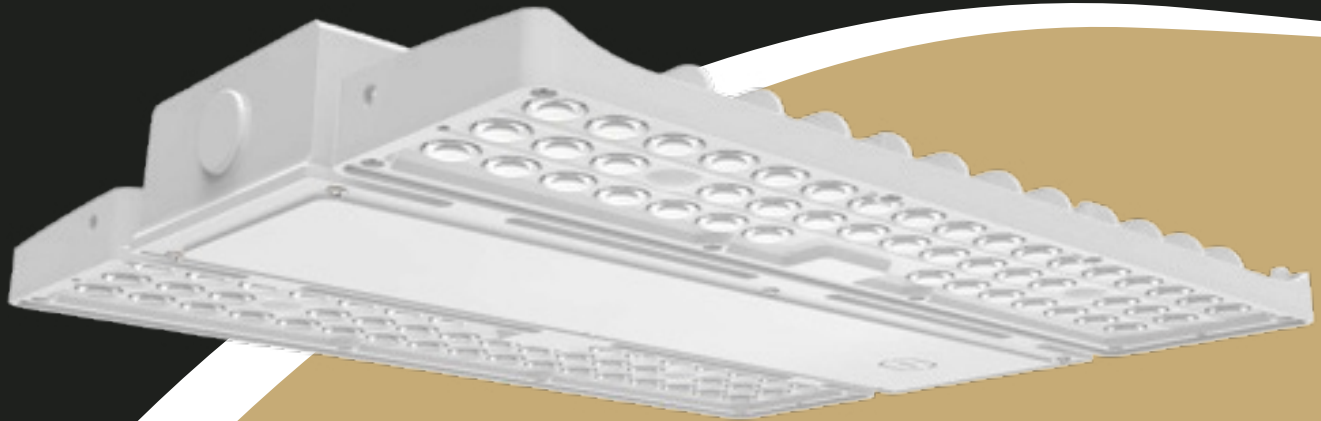


PATRIOT LINEAR HIGH BAY

CCT SELECTABLE AND WATTAGE SELECTABLE



LOCK IN YOUR PRICING AND MANAGE YOUR INVENTORY NOW

YOU DECIDE THE TERM • YOU DECIDE THE RELEASES • WE PAY THE FREIGHT

Certain conditions apply. For more information, contact your local LuxLogic sales agent.

Description

The **Patriot** is a **CCT SELECTABLE AND WATTAGE SELECTABLE** LED linear high bay featuring a super compact design with die-cast housing with powder coated paint. 150W AND 210W WATTAGE SELECTABLE AND CCT SELECTABLE MODELS ARE ONLY 14 INCHES LONG! 310W IS ONLY 20.5 INCHES!

Features

Available in 115/130/155W, 155/180/210W, or 240/270/310W models, with CCT Selectable options for 4000K/5000K. High quality polycarbonate lens provides soft, even light to the environment.

IP20 rated. IK10 rated.

Electrical Specifications

Available in 3 models:
 115/130/155W | 155/180/210W | 240/270/310W
 CCTS: Selectable 4000K / 5000K
 Efficacy: 150 LM/W
 CRI: >80Ra
 Power Factor: >0.9
 Lifetime: L70 > 75000 hrs
 Dimming: Continuous 0-10V Dimming
 Operating Temperature: -40 ~ 50° C / -40 ~ 122°F
 Power Cable Length: 2m / 72"
 6KV Surge Protection Standard
 Available Voltages: 120-347VAC (CUNV) or 277-480V (HV)
Please see data sheet for more details

Certifications and Warranty

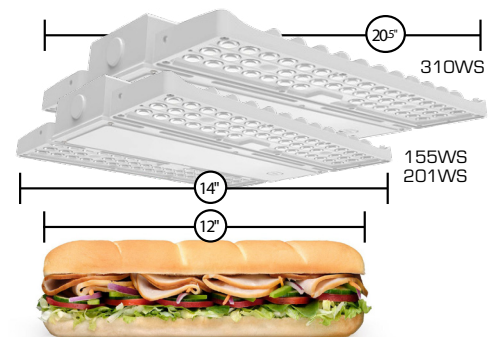
DLC Premium, cUL listed, and CE with 6 year warranty

LuxLogic Inc reserves the right to accept and/or cancel orders without notice at its discretion.

PALLET QUANTITIES

155WS 208 | 210WS 208 | 310WS 156

REVOLUTIONARY
COMPACT DESIGN



PATRIOT

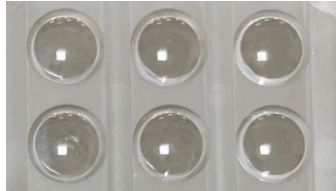
Lenses

New Standard lens is 95 degree with honeycomb optics to reduce “cave effect.” Now also available in aisle lens.

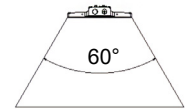
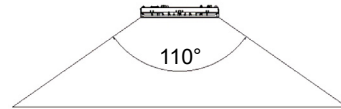
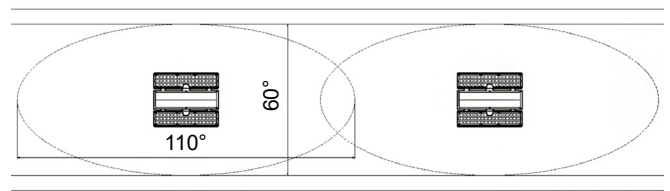
95D (Standard)



105D



Aisle



Accessories

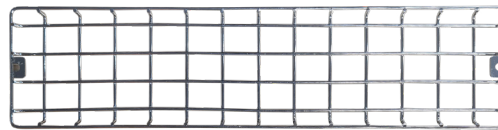
Occupancy Sensor



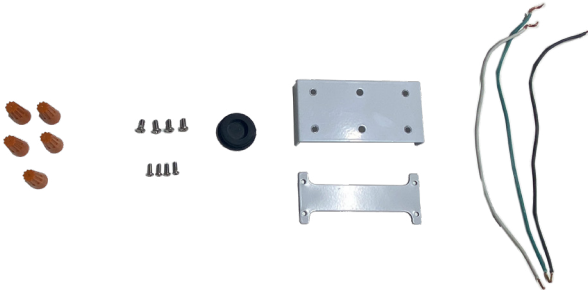
Remote Control



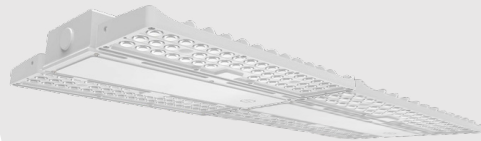
Wire Guard



Continuous Run Connector Kit



**FIXTURES CAN BE
TANDEM MOUNTED**



Emergency Drivers



EB1
115/130/155W
155/180/210W

25W	CUNV
------------	-------------



EB2
240/270/310W

40W	CUNV
------------	-------------