

**APEX**  
**WATTAGE SELECTABLE AND**  
**CCT SELECTABLE**  
**NEMA 4X RATED**



### Description

The **Apex** is a **CCT SELECTABLE AND WATTAGE SELECTABLE** LED linear vapour tight. It provides maximum light output with durable construction. Featuring a one piece fire-retardant polycarbonate housing and lens, the Apex was designed to meet or exceed IES recommended foot-candle levels at installed heights for parking garages, making it ideal for utility lighting, parking garages, and stairwells; where meeting applicable building and safety codes is required.

### Features

Wattage selectable from 32W / 44W / **50W** (Default), with CCT Selectable options for 3000K / 4000K / **5000K** (Default). High quality polycarbonate diffuser integrated with powder coated lighting tray, and stainless steel clips.

IP Rating: IP66

IK Rating: IK08

**NEMA 4X Rated**

### Electrical Specifications

Wattage Selectable Options: 32W / 44W / 50W

CCTs: Selectable 3000K / 4000K / 5000K

Efficacy: 150 LM/W (clear lens) / 130 LM/W (frosted lens)

CRI: >80Ra

Power Factor: >0.9

0-10V Dimming

Operating Temperature: -40 ~ 50° C / -40 ~ 122°F Available

Voltages: 120-347VAC (CUNV)

LM70 > 54,000 hours

SPD: 1KV

Fixture comes complete with IP66 connector.  
 1m (3.3ft) power cable included (not installed)

### Certifications and Warranty

DLC Premium, ETL listed, and CE with 6 year warranty

# APEX - 4'



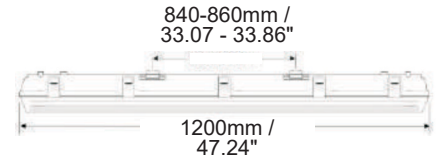
## Product Information

### 50W (Selectable)

Installation:	Surface (Standard), Suspension
Material:	Polycarbonate
Finish:	White
System power (W):	32/44/50W
Fixture lumen output (lm):	4800/6600/7500 (Clear Lens) / 4160/5720/6500
System efficiency (lm/W):	150 (Clear Lens) / 130 (Frosted Lens)
LED driver:	Becky
LED engine:	Hongli SMD2835

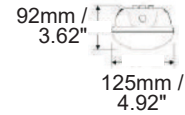
## Packaging

Net weight lamp (kg/lb):	13.2 / 29.1
Gross weight carton (kg/lb):	15.1 / 33.29
Master carton dimensions (mm/in):	1250 x 285 x 310 / 49.21 x 11.22 x 12.21
Quantity per carton:	

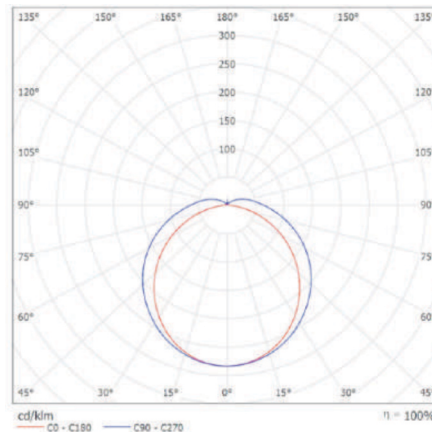
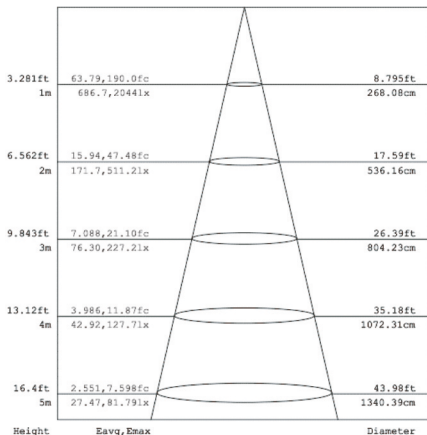


## Code composition

Series	Model	Size	Mounting	Wattage-Lumens	Beam Angle
VT Vapour Tight	AP Apex	4F 4 Foot	CM Surface mount (Standard)	50WS-75L 50WS-7500lm	120 120 Degrees
			SP Suspension		

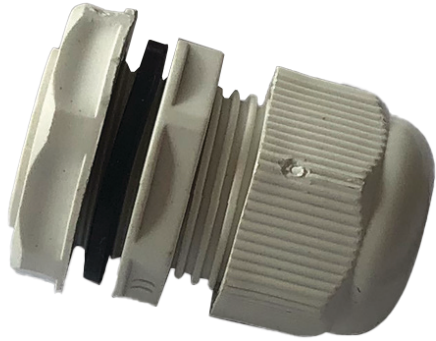


CCT	CRI	Voltage	Dimming	Finish	Accessories	Accessories
CCTS 3000K / 4000K / 5000K Selectable	80 80+	CUNV 120-347V	D 0-10V Dimming (Standard)	WH White	CL Clear (standard) FR Frost (optional)	NA No Accessories OS Microwave Occupancy Sensor EB2 Emergency Backup (Integral) (CUNV 120-347V)



# APEX

IP66 Connector Included



## MOUNTING OPTIONS

CM Surface Mounting Kit (Standard) - 4'



Suspension Mounting Kit



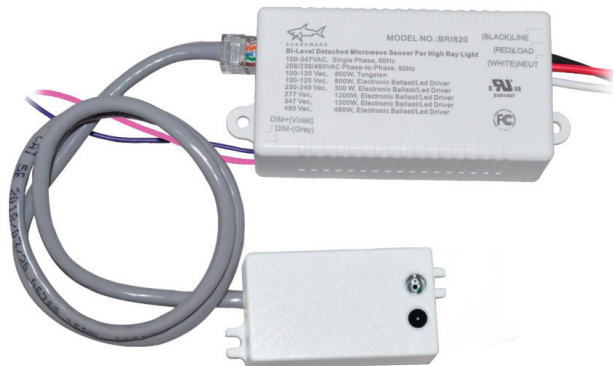
# APEX

## EB2 8 WATT 90 MINUTES

### Emergency Driver & Battery (Integral) (CUNV 120-347V)



## Microwave Sensor



## MICROWAVE OCCUPANCY SENSOR REMOTE CONTROL

	KEY	FUNCTION	KEY	FUNCTION
		Press the on/off button, the light goes to permanent on or permanent off mode, the sensor is locked, <b>MUST Press "AUTO"</b> to quit from this mode.		Press "Auto" button, the sensors starts to work automatically and all parameters remains the same as the latest status in auto mode.
		Display current parameters		The button "Test" is for testing purpose sensitivity only. the sensor goes to test mode (hold time is only 2s) automatically after commissioning, meanwhile the stand-by period and daylight sensor are disabled. Press "AUTO" to quit from this mode.
		upload the selected parameters to sensors		When the light level exceeds this setting, the lights will turn off even when the space is occupied. Once the light level exceeds this setting, the sensor will wait and monitor for 1 mins in order to confirm the light level increase is not temporary before forcing the lights to go off. When light level goes below the settings, the light will turn on even without motion detection after 1min. This feature is disabled by default. If want to open this setting, just press , choose daylight sensor setpoint on/off.
		Enter in the setting condition and navigate to UP and Down		
		Navigate to Right and Left		
		Confirm selected parameters and saving		
		Default settings:		Four modes with existing parameters which are available to be updated and saved in Modes
	BRIGHTNESS	Adjust the light brightness during hold time.		Select , threshold for sensor to turn light fixture ON. Select , current surrounding lux value as daylight lux threshold, select , the built-in daylight sensor stops working, and all motions detected could turn the light fixture on, no matter how bright the natural light is.
	SENSITIVITY	Adjust sensor sensitivity		
	HOLD TIME	The time of light fixture remains at programmed 70%/80%/100% level after motion is not detected		Select the stand-by dimming level at 0%/10%/30%/ 50%; Note: "0%" means on /off control;
STAND-BY TIME	Select stand-by period at 1min/30min / 60min/+∞; Note: "+∞" means bi-level dimming control, fixture never switches off.			

RC-100 Remote Control