

 **herckē**
SERIES 7EVEN[®]

ASSEMBLY INSTRUCTIONS



 **herckē**
SERIES **7EVEN**[®]

ASSEMBLY INSTRUCTIONS

Storage Cabinet Case

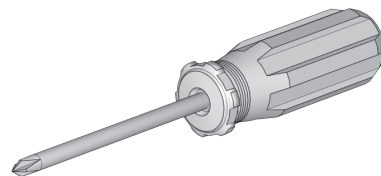
24", 30", 54"

Assembly Instructions Overview

Please read this brief overview before assembling your Hercke Series 7even system. What follows is an outline of the order in which your assembly process needs to occur.

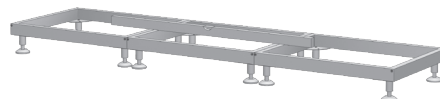
1

A Phillips head N0. 2 screwdriver is the only tool required to assemble Hercke® Series 7even® products. Depending on your installation requirements, other tools that may be helpful include a level, power drill and drill bits.



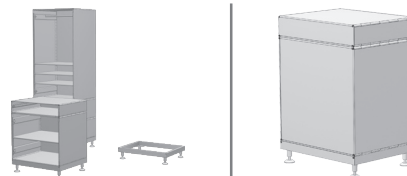
2

Assemble all platforms. Place platform in the desired location. Level each platform and make sure all platforms are level together.



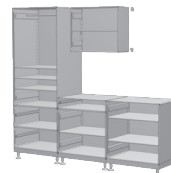
3

Pull platform out allowing yourself room to get behind the platform. Assemble cases. Stack cases and drawers on platforms in a single stack. Add Single E-Clips to the backside of cases and drawers. Slide the stack back into their final level position.



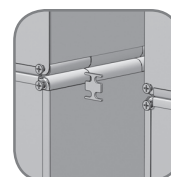
4

Assemble Overhead Storage Cases. Select overhead cabinet placement. Attach case using Wall Mount System or Channel Mount System.



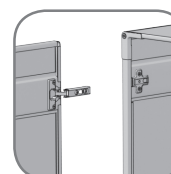
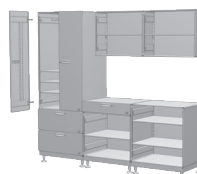
5

Fasten Single and Double E-Clips to adjoin cases and drawer modules.



6

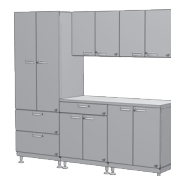
Snap door hinges to case hinge plates and adjust door positions.



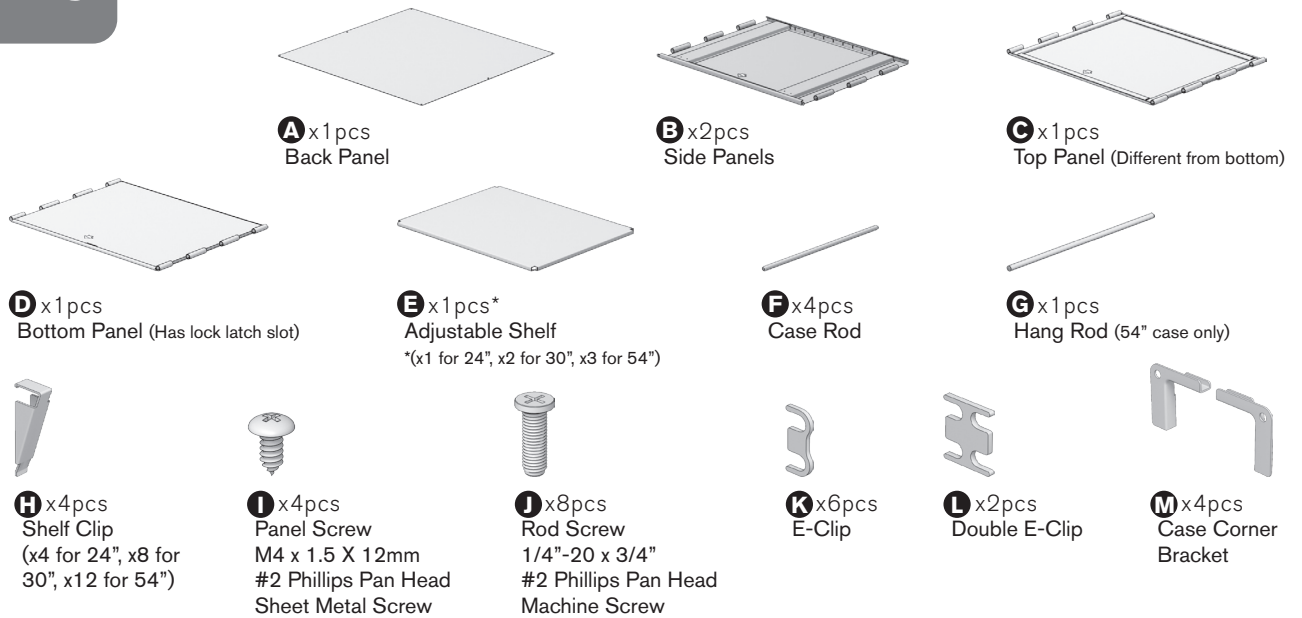
7

Attach work surface.

Chaos Defeated. Order Restored.

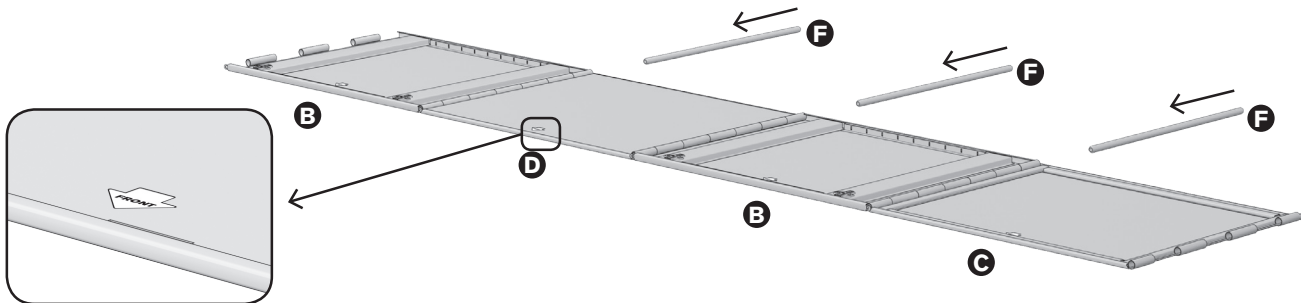


PARTS



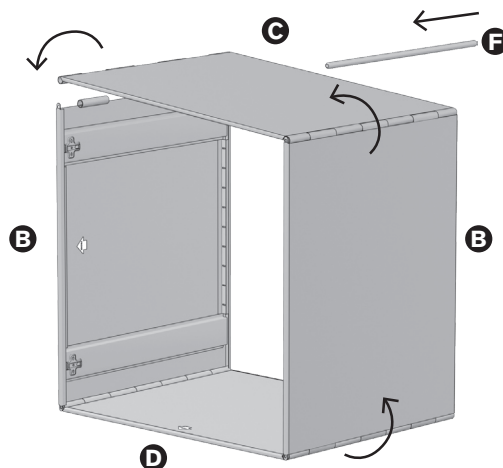
1

- A** Assemble cabinet case by interlocking Panels **B**, **C** and **D** as demonstrated below. Make sure front arrows on all Panels are facing the same direction.
- B** Insert Case Rod **F** into hinge cylinder completely.



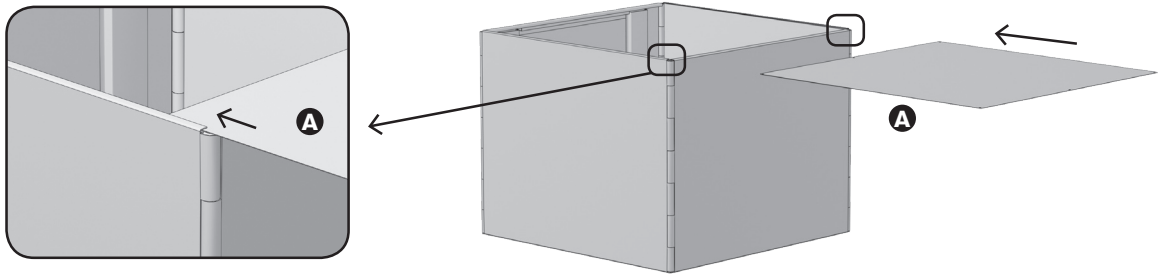
2

- A** Lift and fold hinged case as demonstrated below.
- B** Insert final Case Rod **F** into hinge cylinder.



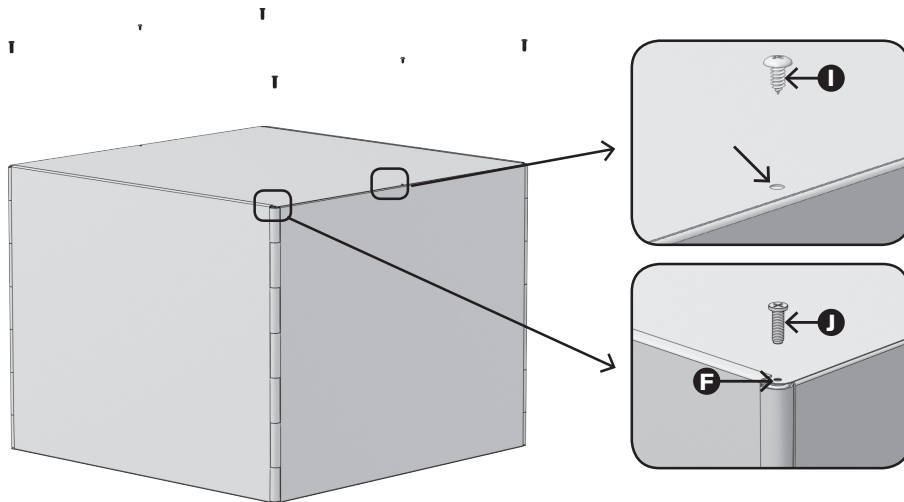
3

- A** Tip assembled case front (front arrows) side down.
- B** Insert Back Panel **A** under both the top and bottom metal tabs as demonstrated below. Once the Back Panel **A** is inserted pull the piece through slightly upward.
- C** Align holes in Back Panel **A** with holes on cabinet case Panels and Case Rods.



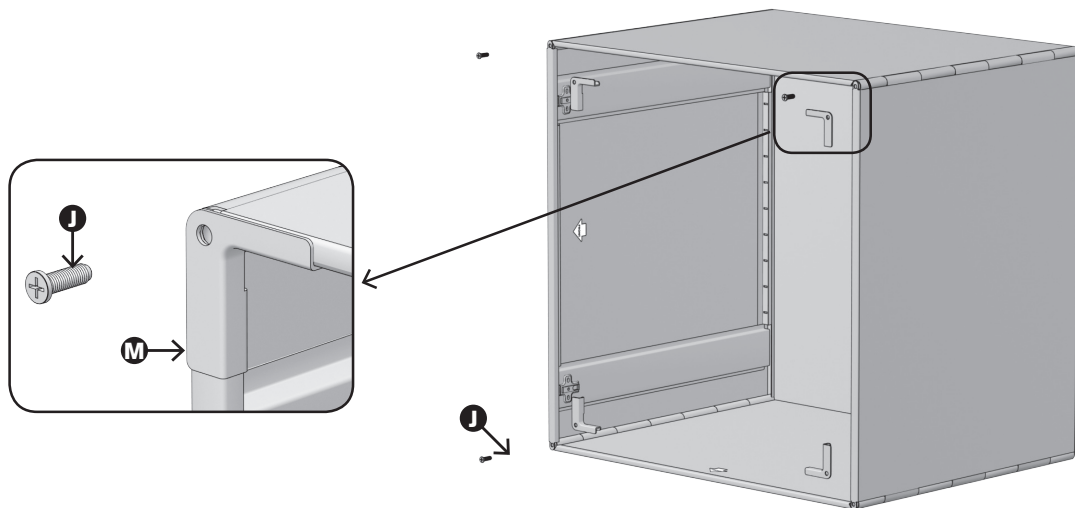
4

Fasten Back Panel **A** with the Panel Screws **I** and the Rod Screws **J** in each of the Case Rods **F**.



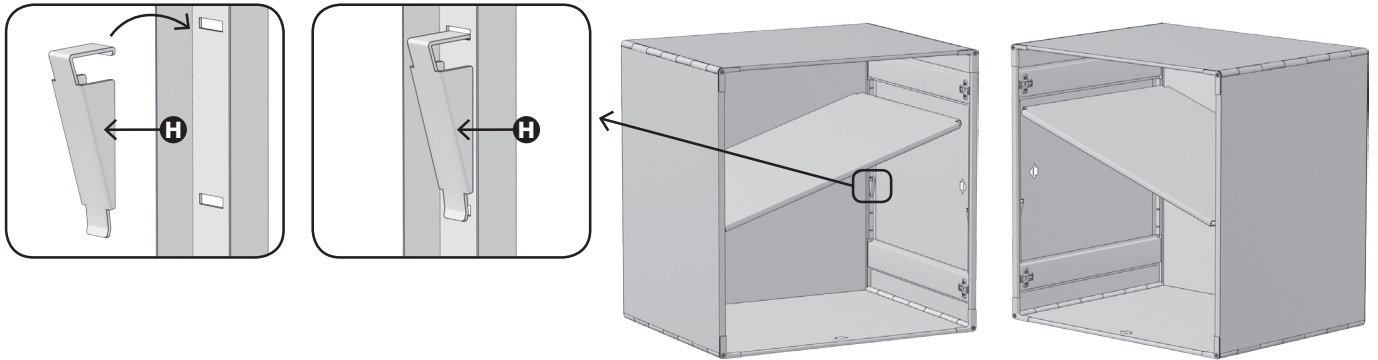
5

- A** Insert Case Corner Brackets **M** into the cabinet case corners on the front side of the case.
- B** Attach using Rod Screws **J** in each of the four corners.



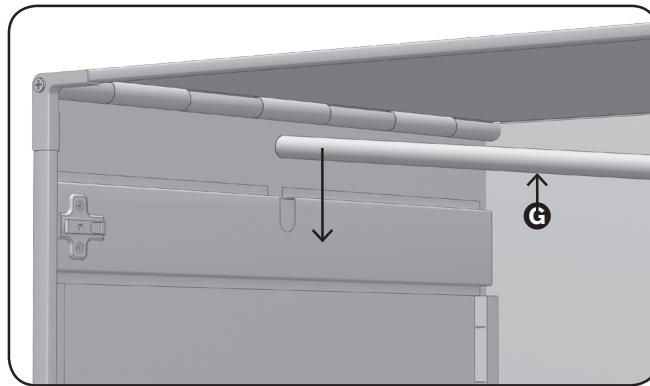
6

- A** Insert Shelf Clip **H** into the inside of case at desired shelf height.
- B** Place adjustable shelf **E** into case, making sure it is firmly supported by the shelf clips.



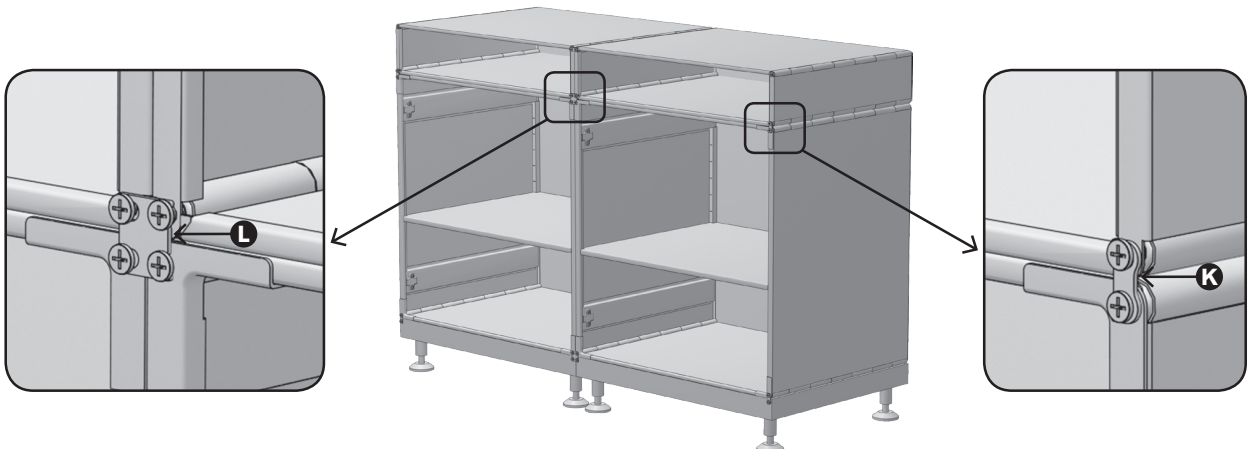
7

- Place hanging rod **G** into case and secure into slot as illustrated below. 54" case only.



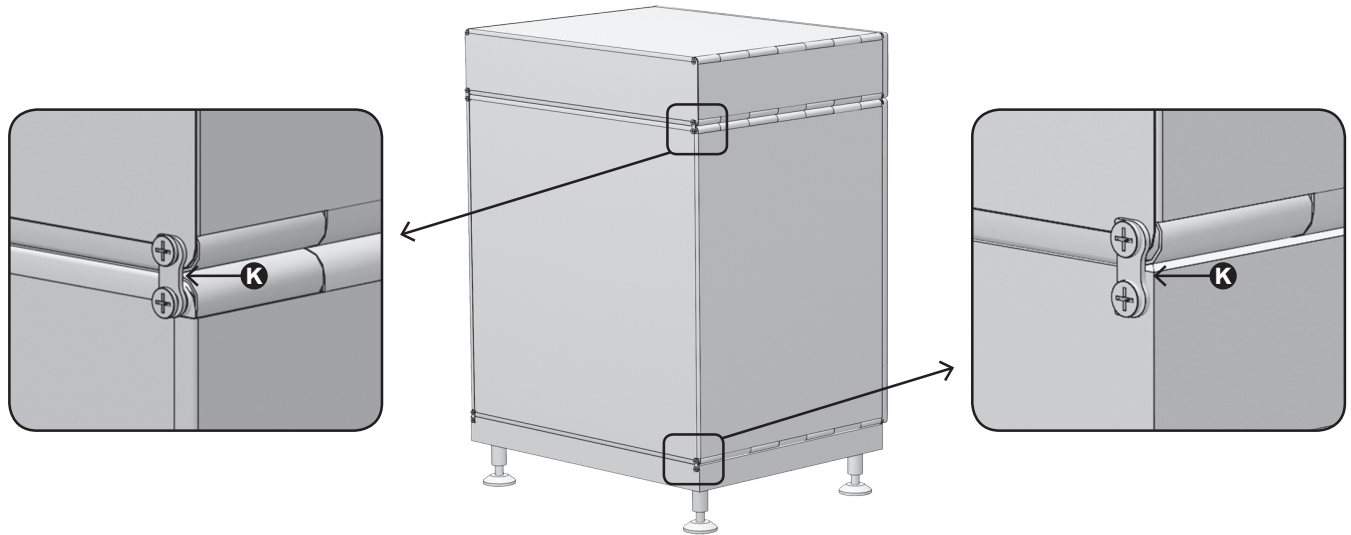
8

- A** Before attaching doors fasten Single E-Clips **K** and Double E-Clip **L** which will link vertically and horizontally stacked units as illustrated. (use as needed)
- B** Loosen screws and place clip flush with cabinet case.
- C** Tighten screws to fasten units in place.



8_B

- A** Fasten Single E-Clip **K** which will link vertically stacked units as illustrated. (use as needed)
- B** Loosen screws and place clip flush with cabinet case.
- C** Tighten screws to fasten units in place.



CLEANING AND CARE

Clean stainless steel surfaces using dry soft cotton cloth and stainless steel polish, buffing vertically with the line finish of the stainless steel.

Clean painted surfaces and coated surfaces using a mild dish soap and warm water solution. **DO NOT** use abrasive cleaners, glass cleaners, solvent based cleaners or furniture polish.



www.hercke.com | 866.767.3905 ext.16

Please visit www.hercke.com to download these instructions in your preferred language.



 **herckē**
SERIES **7EVEN**[®]

ASSEMBLY INSTRUCTIONS

Cabinet Doors

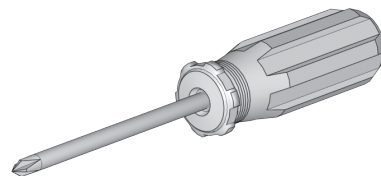
24", 30", 54"

Assembly Instructions Overview

Please read this brief overview before assembling your Hercke Series 7even system. What follows is an outline of the order in which your assembly process needs to occur.

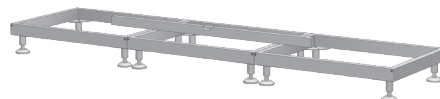
1

A Phillips head N0. 2 screwdriver is the only tool required to assemble Hercke® Series 7even® products. Depending on your installation requirements, other tools that may be helpful include a level, power drill and drill bits.



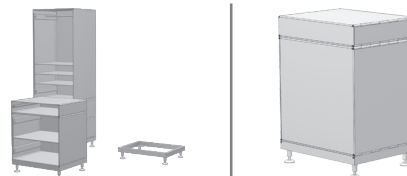
2

Assemble all platforms. Place platform in the desired location. Level each platform and make sure all platforms are level together.



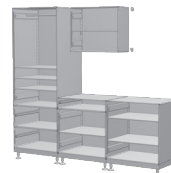
3

Pull platform out allowing yourself room to get behind the platform. Assemble cases. Stack cases and drawers on platforms in a single stack. Add Single E-Clips to the backside of cases and drawers. Slide the stack back into their final level position.



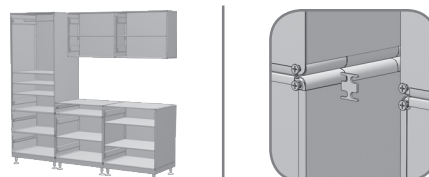
4

Assemble Overhead Storage Cases. Select overhead cabinet placement. Attach case using Wall Mount System or Channel Mount System.



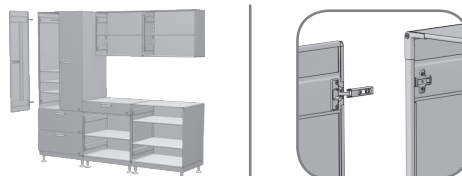
5

Fasten Single and Double E-Clips to adjoin cases and drawer modules.



6

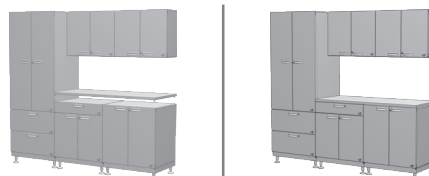
Snap door hinges to case hinge plates and adjust door positions.



7

Attach work surface.

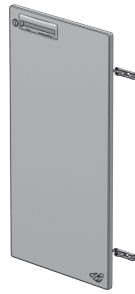
Chaos Defeated. Order Restored.



PARTS



A x1 pcs
Left Door



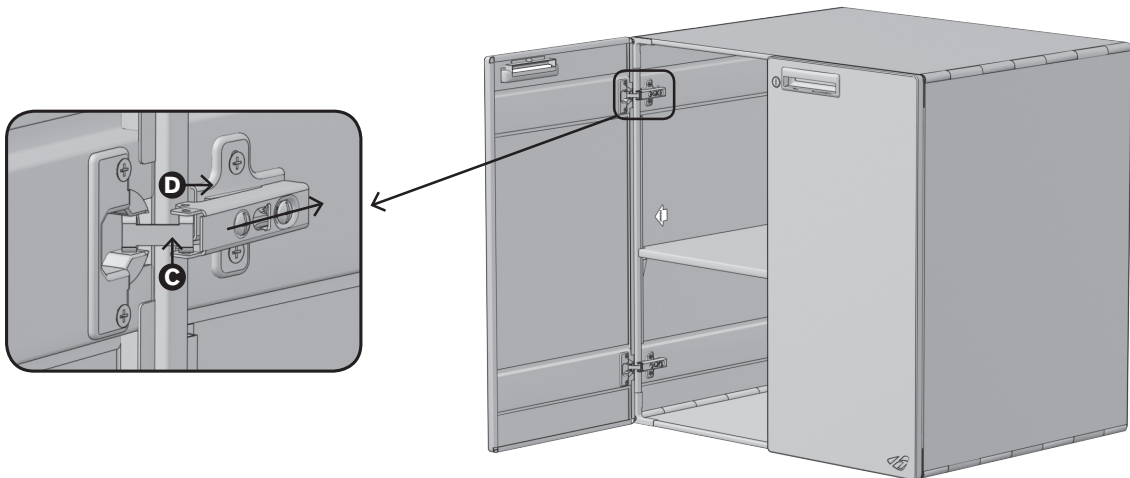
B x1 pcs
Right Door



C x2 pcs
Keys

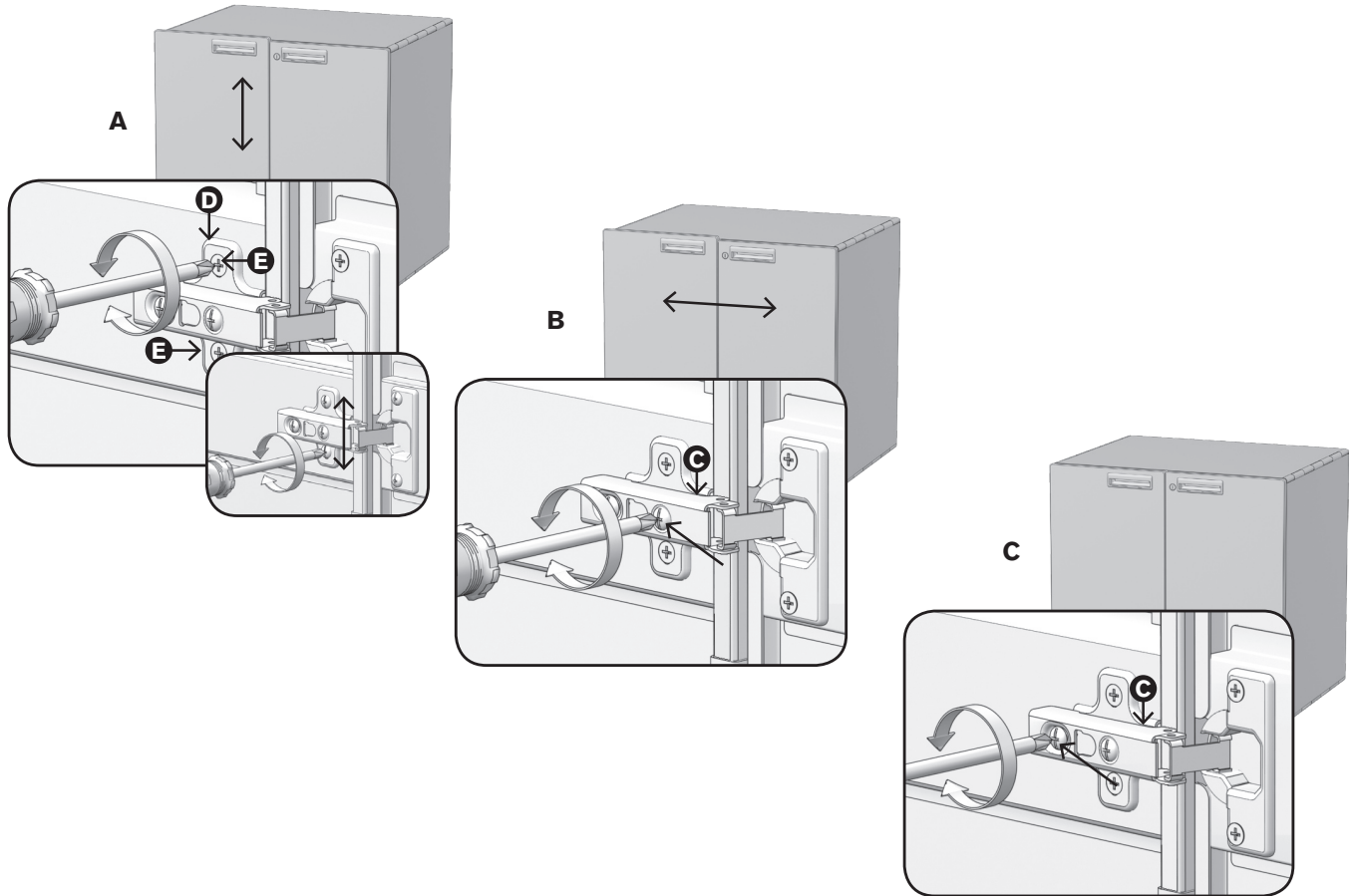
1

- A** Hold door parallel to cabinet edge and slide the hinge **C** into the hinge plate **D** and clamp down. Repeat for bottom hinge and all other remaining doors.
- B** Close the door and inspect. If adjustments are needed go to step 2 on the back cover.



2

- A** To adjust the door's vertical position, loosen the (2) hinge plate **D** screws **E** and slide the hinge plate up or down to the desired position. Tighten both screws to lock the hinge plate in position.
- B** To adjust the door horizontal position, turn the 1st hinge **C** adjustment screw left or right to move door left or right.
- C** To adjust the door position against the case, turn the 2nd hinge **C** adjustment screw left or right to move door in or out.
- D** Close the door and inspect, readjust as necessary.



CLEANING AND CARE

Clean stainless steel surfaces using dry soft cotton cloth and stainless steel polish, buffing vertically with the line finish of the stainless steel.

Clean painted surfaces and coated surfaces using a mild dish soap and warm water solution. **DO NOT** use abrasive cleaners, glass cleaners, solvent based cleaners or furniture polish.



www.hercke.com | 866.767.3905 ext.16

Please visit www.hercke.com to download these instructions in your preferred language.



ASSEMBLY INSTRUCTIONS

Storage Drawers

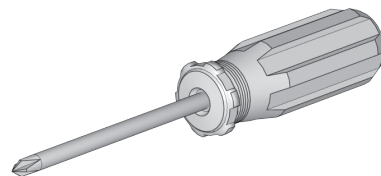
3", 6", 12"

Assembly Instructions Overview

Please read this brief overview before assembling your Hercke Series 7even system. What follows is an outline of the order in which your assembly process needs to occur.

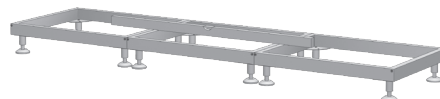
1

A Phillips head N0. 2 screwdriver is the only tool required to assemble Hercke® Series 7even® products. Depending on your installation requirements, other tools that may be helpful include a level, power drill and drill bits.



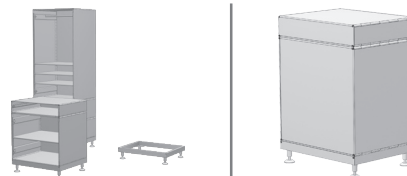
2

Assemble all platforms. Place platform in the desired location. Level each platform and make sure all platforms are level together.



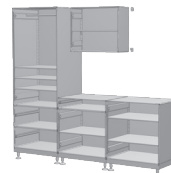
3

Pull platform out allowing yourself room to get behind the platform. Assemble cases. Stack cases and drawers on platforms in a single stack. Add Single E-Clips to the backside of cases and drawers. Slide the stack back into their final level position.



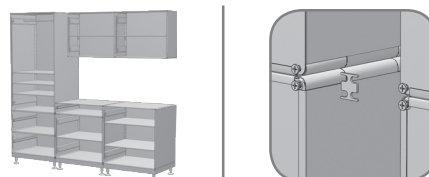
4

Assemble Overhead Storage Cases. Select overhead cabinet placement. Attach case using Wall Mount System or Channel Mount System.



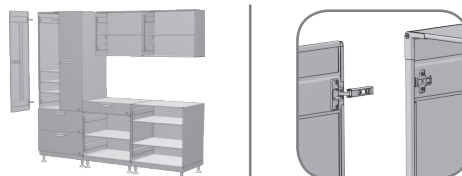
5

Fasten Single and Double E-Clips to adjoin cases and drawer modules.



6

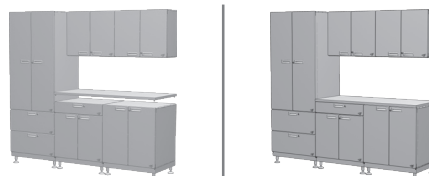
Snap door hinges to case hinge plates and adjust door positions.



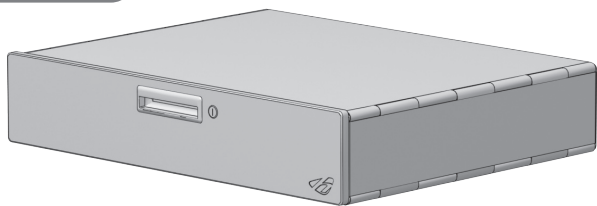
7

Attach work surface.

Chaos Defeated. Order Restored.



PARTS



A x1 pcs
Drawer Assembly



B x2 pcs
Key



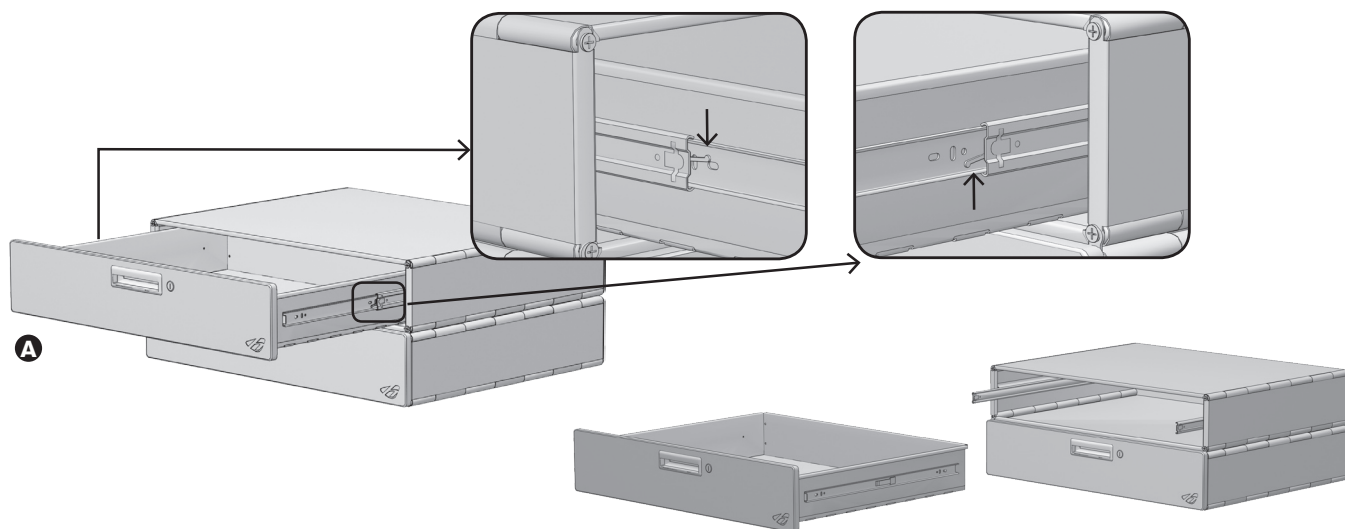
C x4 pcs
E-Clip



D x4 pcs
Double E-Clip

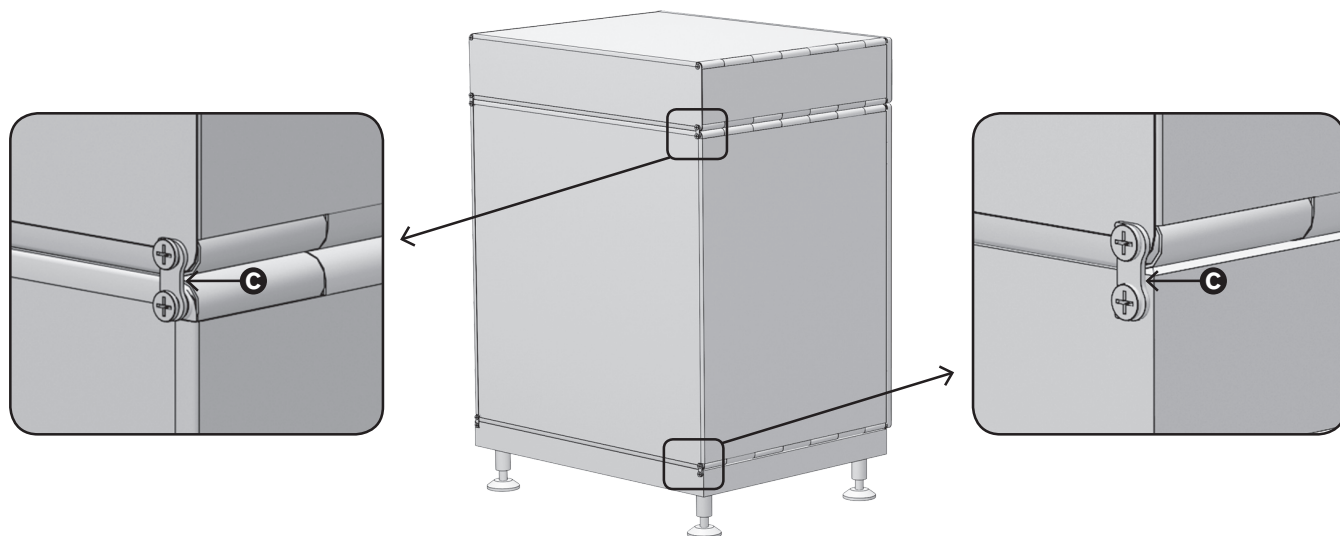
1

The drawer comes assembled. To remove the drawer from the case apply pressure to the black clips and pull the drawer towards you.



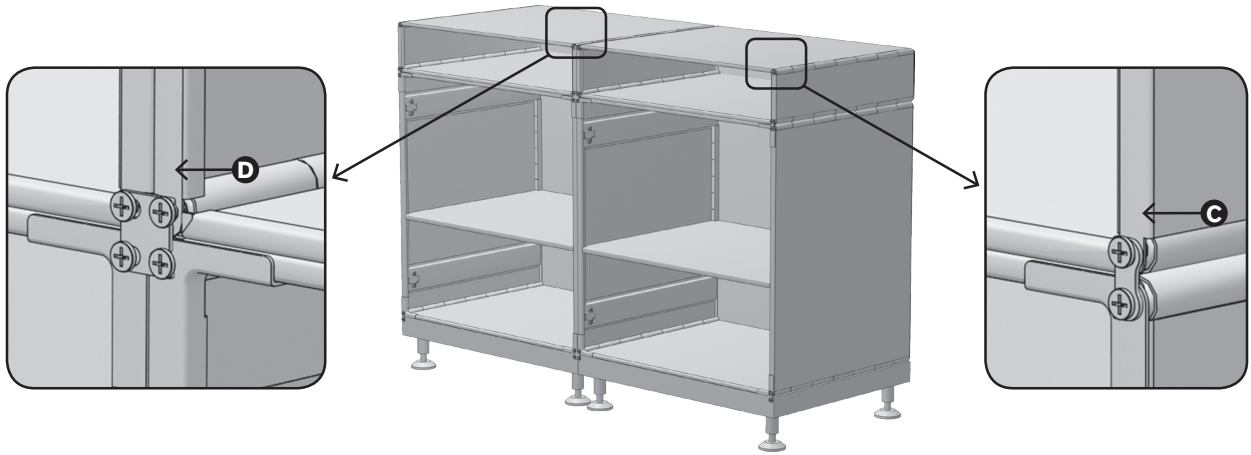
2

- A** Fasten Single E-Clip **C** which will link vertically stacked units as illustrated. (use as needed)
- B** Loosen screws and place clip flush with cabinet case.
- C** Tighten screws to fasten units in place.



3

- A** Before attaching doors fasten Single E-Clips **C** and Double E-Clip **D** which will link vertically and horizontally stacked units as illustrated. (use as needed)
- B** Loosen screws and place clip flush with cabinet case.
- C** Tighten screws to fasten units in place.



CLEANING AND CARE

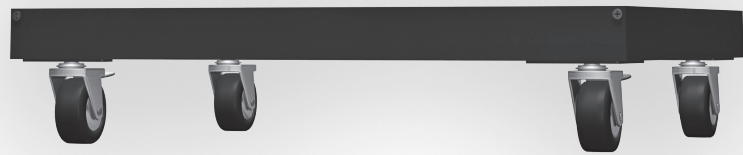
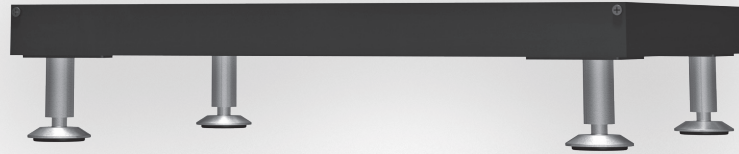
Clean stainless steel surfaces using dry soft cotton cloth and stainless steel polish, buffing vertically with the line finish of the stainless steel.

Clean painted surfaces and coated surfaces using a mild dish soap and warm water solution. **DO NOT** use abrasive cleaners, glass cleaners, solvent based cleaners or furniture polish.



www.hercke.com | 866.767.3905 ext.16

Please visit www.hercke.com to download these instructions in your preferred language.



ASSEMBLY INSTRUCTIONS

Platforms

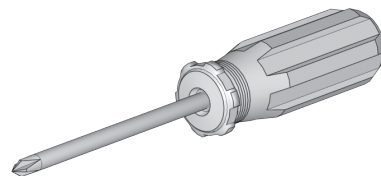
Stationary, Rolling

Assembly Instructions Overview

Please read this brief overview before assembling your Hercke Series 7even system. What follows is an outline of the order in which your assembly process needs to occur.

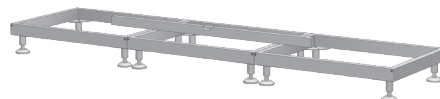
1

A Phillips head N0. 2 screwdriver is the only tool required to assemble Hercke® Series 7even® products. Depending on your installation requirements, other tools that may be helpful include a level, power drill and drill bits.



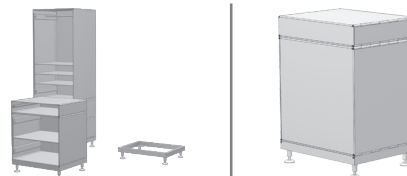
2

Assemble all platforms. Place platform in the desired location. Level each platform and make sure all platforms are level together.



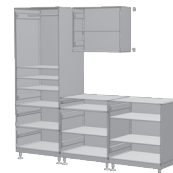
3

Pull platform out allowing yourself room to get behind the platform. Assemble cases. Stack cases and drawers on platforms in a single stack. Add Single E-Clips to the backside of cases and drawers. Slide the stack back into their final level position.



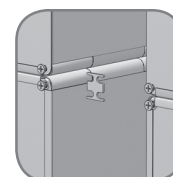
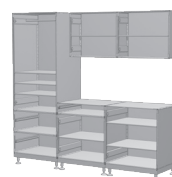
4

Assemble Overhead Storage Cases. Select overhead cabinet placement. Attach case using Wall Mount System or Channel Mount System.



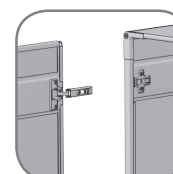
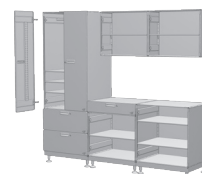
5

Fasten Single and Double E-Clips to adjoin cases and drawer modules.



6

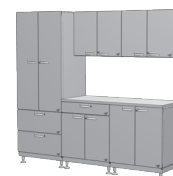
Snap door hinges to case hinge plates and adjust door positions.



7

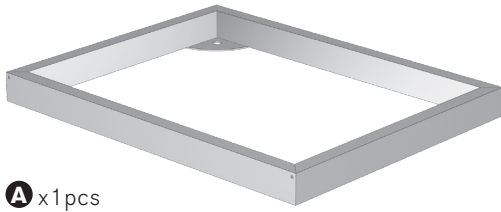
Attach work surface.

Chaos Defeated. Order Restored.



PARTS

ADJUSTABLE STATIONARY PLATFORM



A x1 pcs
Platform Frame



B x4 pcs
Legs



C x4 pcs
Leg Screws
5/16"-18 x 3/4"
#2 Phillips Pan Head
Machine Screw



D x4 pcs
5/16" Split
Lock Washer



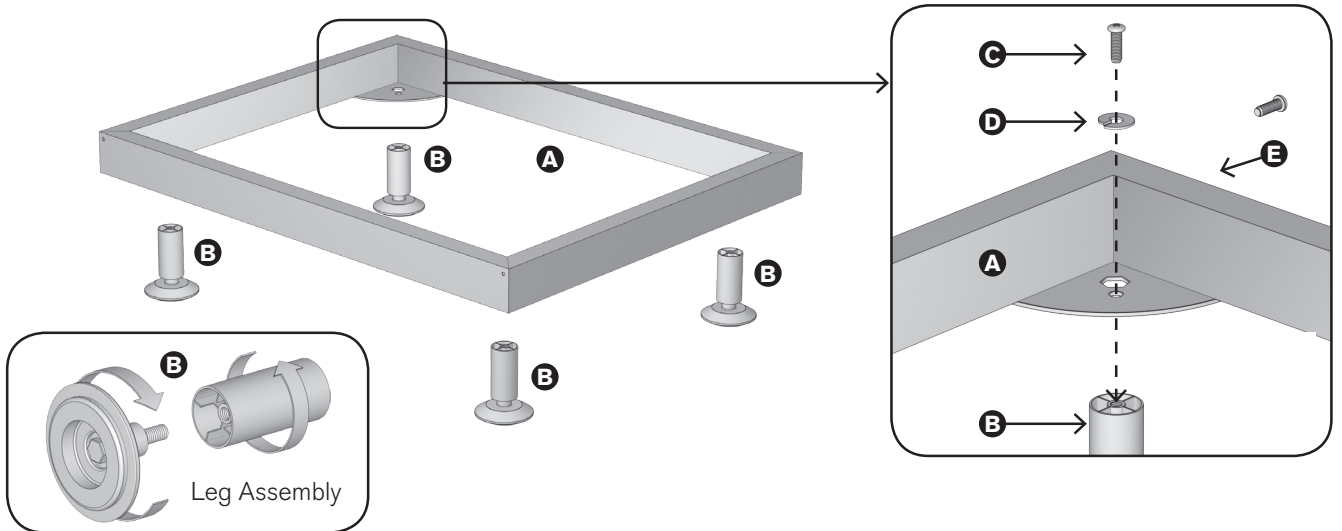
E x4 pcs
Rod Screw
1/4"-20 x 3/4"
#2 Phillips Pan Head
Machine Screw

1

A Assemble legs **B**

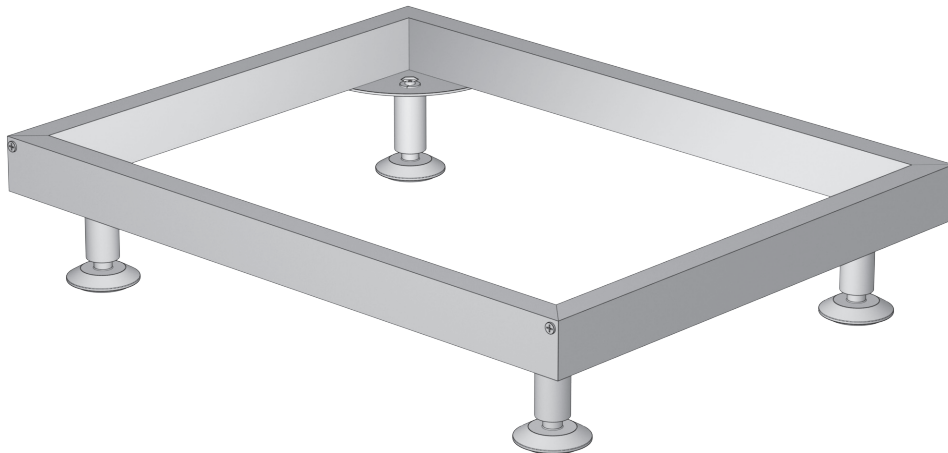
B Fasten legs **B** to platform frame **A** using parts **C** & **D** in the outer round hole as illustrated below.

C Insert screws **E** into the holes on the sides of the platform frame. (These will later be used with E-Clips and Double E-Clips to secure cabinets to the platform.)



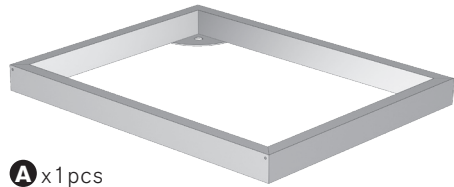
2

Rotate legs to adjust height and level platform.



PARTS

LOCKING ROLLING PLATFORM



A x1 pcs
Platform Frame



D x4 pcs
Hex Nut
M12 x 1.75



C x2 pcs
Caster



E x4 pcs
Split Lock Washer
12mm



B x2 pcs
Locking Caster



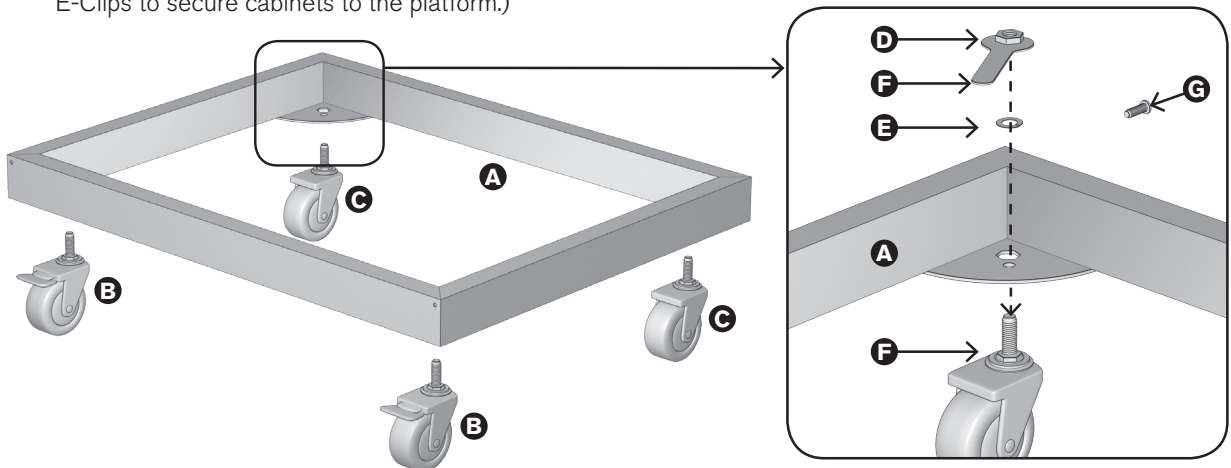
F x1 pcs
Wrench



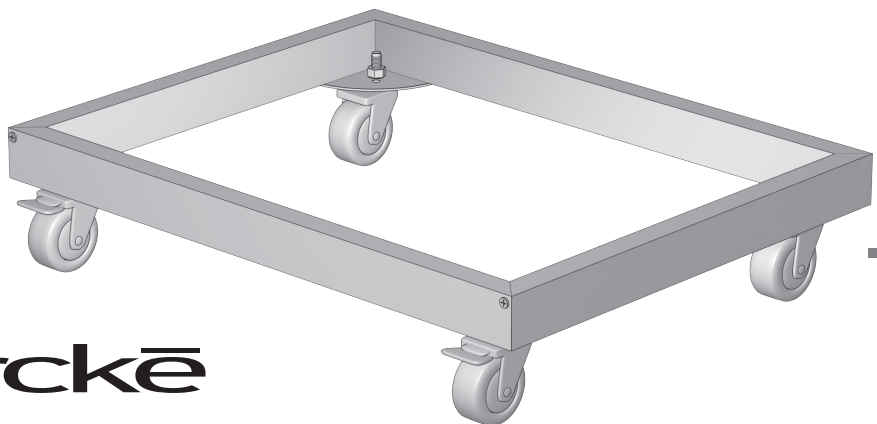
G x4 pcs
Rod Screw
1/4"-20 x 3/4"
#2 Phillips Pan Head
Machine Screw

1

- A** Fasten casters **B** & **C** to platform frame **A** using parts **D**, **E** & **F** as illustrated below. Make sure the caster posts are placed and seated in the hex hole. Place both rolling casters **C** on the back side of the platform and both of the locking casters **B** on the front side of the platform.
- B** Insert **G** screws into the holes on the sides of the platform frame. (These will later be used with E-Clips and Double E-Clips to secure cabinets to the platform.)

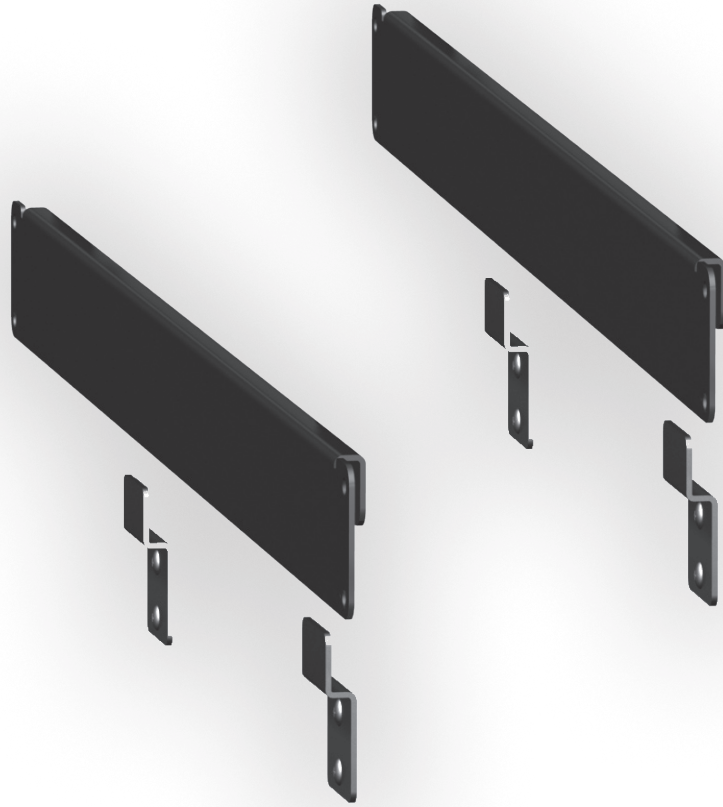


2



www.hercke.com | 866.767.3905 ext.16

Please visit www.hercke.com to download these instructions in your preferred language.



 herckē[®]
SERIES 7EVEN[®]

ASSEMBLY INSTRUCTIONS

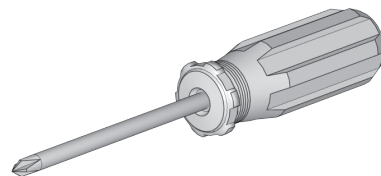
Wall Mount System

Assembly Instructions Overview

Please read this brief overview before assembling your Hercke Series 7even system. What follows is an outline of the order in which your assembly process needs to occur.

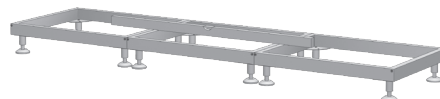
1

A Phillips head N0. 2 screwdriver is the only tool required to assemble Hercke® Series 7even® products. Depending on your installation requirements, other tools that may be helpful include a level, power drill and drill bits.



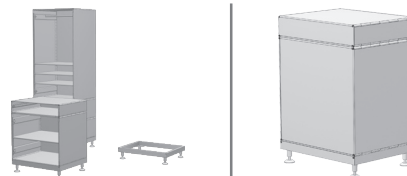
2

Assemble all platforms. Place platform in the desired location. Level each platform and make sure all platforms are level together.



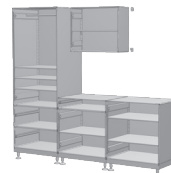
3

Pull platform out allowing yourself room to get behind the platform. Assemble cases. Stack cases and drawers on platforms in a single stack. Add Single E-Clips to the backside of cases and drawers. Slide the stack back into their final level position.



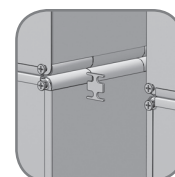
4

Assemble Overhead Storage Cases. Select overhead cabinet placement. Attach case using Wall Mount System or Channel Mount System.



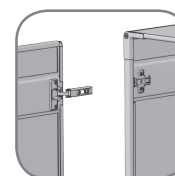
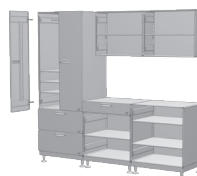
5

Fasten Single and Double E-Clips to adjoin cases and drawer modules.



6

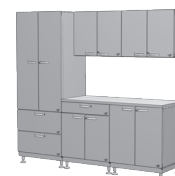
Snap door hinges to case hinge plates and adjust door positions.



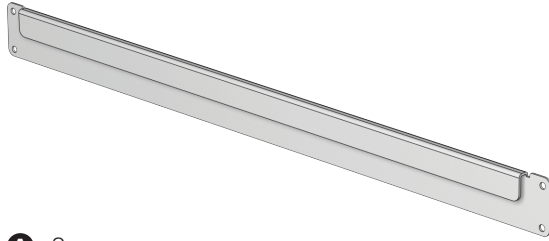
7

Attach work surface.

Chaos Defeated. Order Restored.



PARTS



A x2pcs
J Track



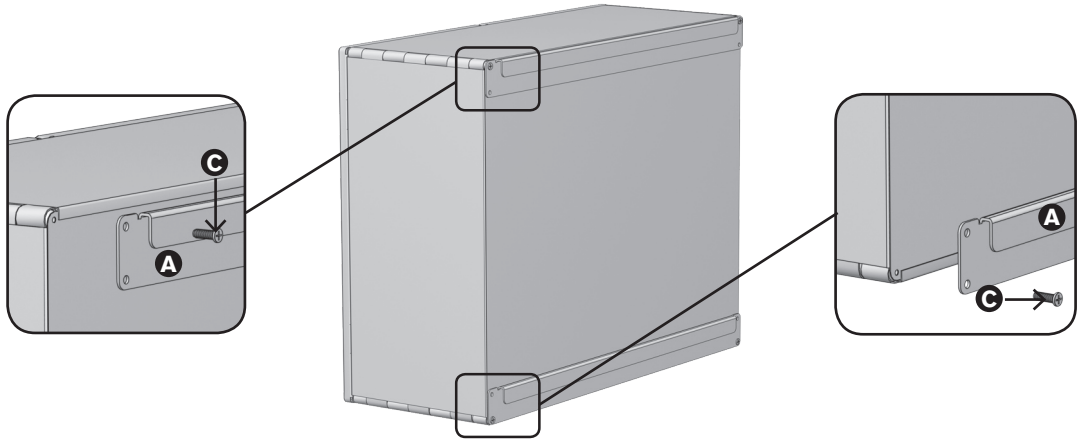
B x4pcs
Z Bracket



C x8pcs
#8 x 3/4" 2 Phillips Pan
Head Screw

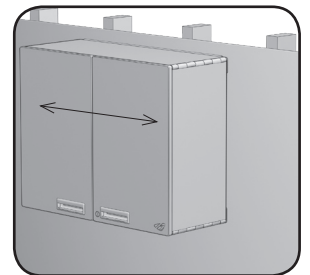
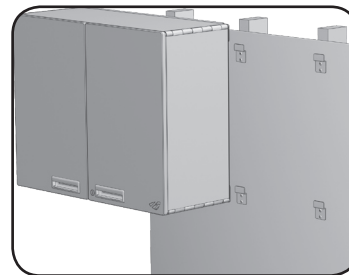
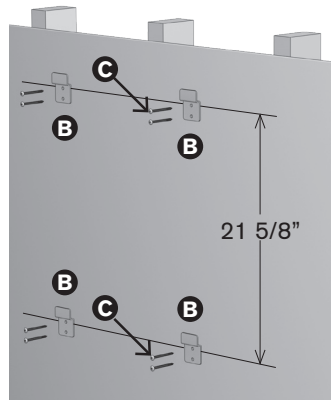
1

- A** Remove 4 rod screws on back panel.
- B** Attached J track **A** with 2 of the existing rod screws to top of case using the upper hole of the J bracket **A**. Repeat step for the lower J track **A** attachment using the lower hole of the J bracket.



2

- A** The instructions and screws provided are for wood framed wall applications only. If you are attaching the Wall Mount System to other types of wall materials please consult with an anchor hardware supplier for the appropriate anchoring system.
- B** Draw a level line on wall surface 2-1/4" below where you would like to place the top of your cabinets for the upper Z brackets **B**. Draw a parallel line 21-7/8" (for a 24" cabinet) or 27-7/8" (for a 30" cabinet) below the upper Z bracket **B** line for the top hole location of lower Z brackets **B**. Locate the wood studs and mark top hole location for each Z bracket **B**. Using the Z bracket **B** as a template, align the top hole at the marked locations and mark the lower hole location.
- C** Drill a 3/16" hole through the wall surface into the wood stud for each hole location. Attach the Z brackets **B** using the (8) #8 x 3/4" #2 Phillips pan head screws **C** provided. Make sure all screws are securely fastened.
- D** Lift and hang the cabinet onto the (4) securely attached Z brackets **B**. Slide cabinet left or right as necessary. Repeat these steps for additional Wall Mount Systems.



CLEANING AND CARE

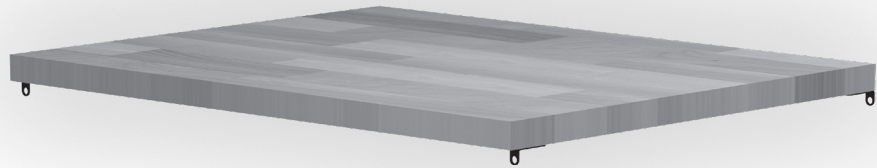
Clean stainless steel surfaces using dry soft cotton cloth and stainless steel polish, buffing vertically with the line finish of the stainless steel.

Clean painted surfaces and coated surfaces using a mild dish soap and warm water solution. **DO NOT** use abrasive cleaners, glass cleaners, solvent based cleaners or furniture polish.



www.hercke.com | 866.767.3905 ext.16

Please visit **www.hercke.com** to download these instructions in your preferred language.



 **herckē**
SERIES **7EVEN**[®]

ASSEMBLY INSTRUCTIONS

Work Surfaces

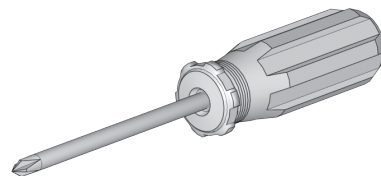
30", 60", 90"

Assembly Instructions Overview

Please read this brief overview before assembling your Hercke Series 7even system. What follows is an outline of the order in which your assembly process needs to occur.

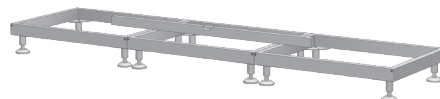
1

A Phillips head N0. 2 screwdriver is the only tool required to assemble Hercke® Series 7even® products. Depending on your installation requirements, other tools that may be helpful include a level, power drill and drill bits.



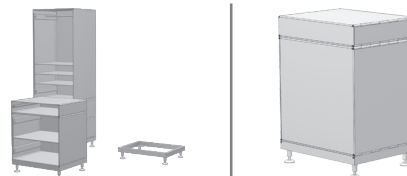
2

Assemble all platforms. Place platform in the desired location. Level each platform and make sure all platforms are level together.



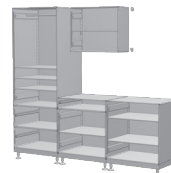
3

Pull platform out allowing yourself room to get behind the platform. Assemble cases. Stack cases and drawers on platforms in a single stack. Add Single E-Clips to the backside of cases and drawers. Slide the stack back into their final level position.



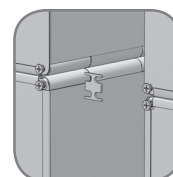
4

Assemble Overhead Storage Cases. Select overhead cabinet placement. Attach case using Wall Mount System or Channel Mount System.



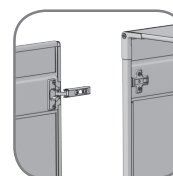
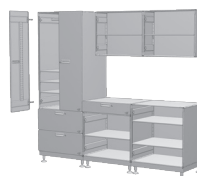
5

Fasten Single and Double E-Clips to adjoin cases and drawer modules.



6

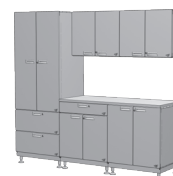
Snap door hinges to case hinge plates and adjust door positions.



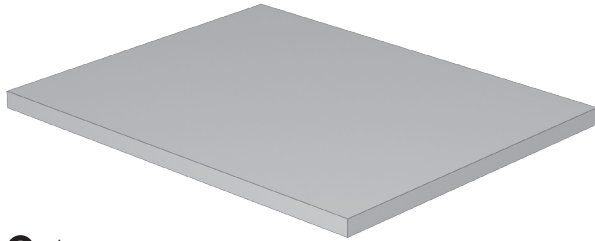
7

Attach work surface.

Chaos Defeated. Order Restored.



PARTS



A x1 pcs
Work Surface (90", 60" or 30" widths)



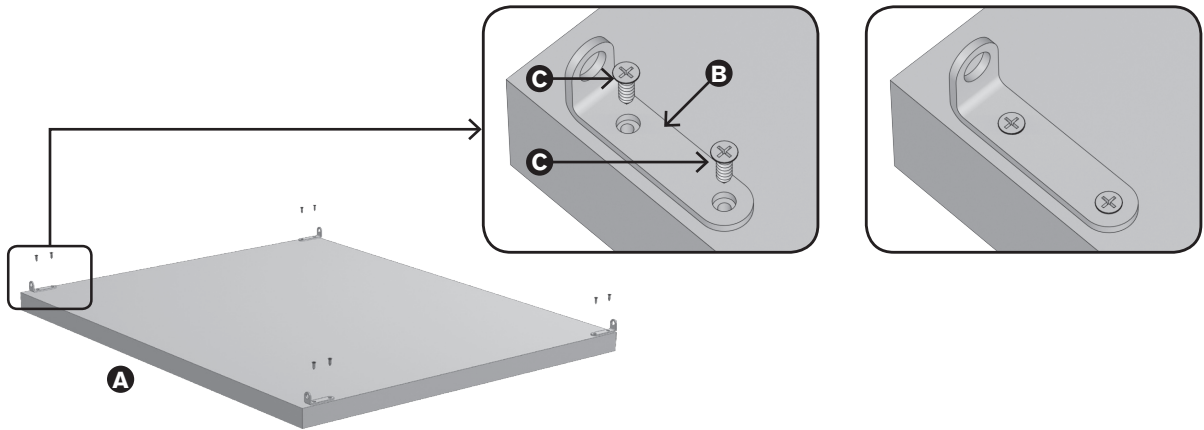
B x4 pcs (x8 pcs for
60" and 90" widths)
Work Surface Bracket



C x4 pcs (x16 pcs for
60" and 90" widths)
#8 x 3/4"
#2 Phillips Pan Head Screw

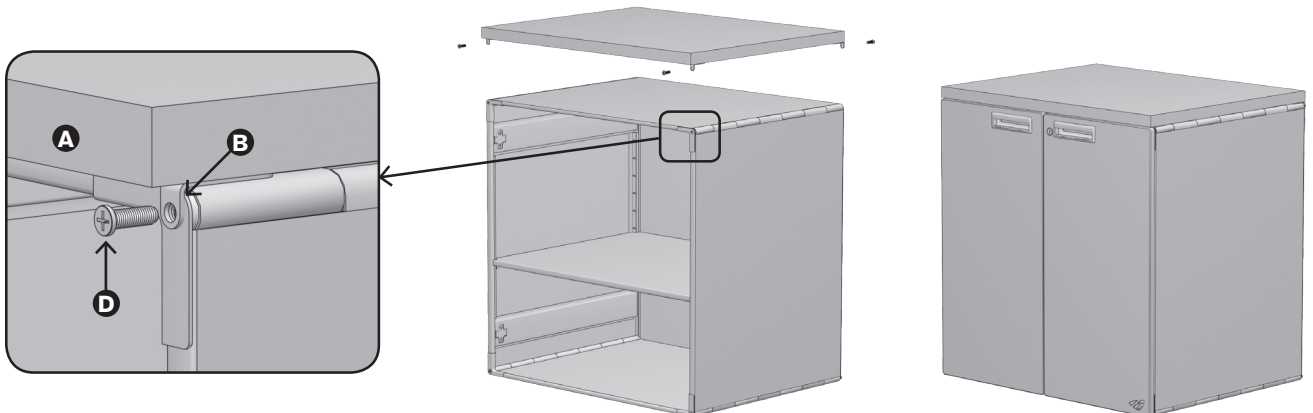
1

- A** Place work surface **A** topside down as illustrated below. Place on a soft surface to avoid scratching the top.
- B** Place the work surface brackets **B** at each of the 4 outside corners. It is not necessary to install the brackets at any of the other pre drilled locations unless you are installing a hanging drawer or will be applying a lot of torque at a specific location (such as a vise).
- C** Attach the brackets **B** using the #8 x 3/4" phillips pan head screws **C** into the pre drilled hole locations.



2

- A** Remove doors and drawers as necessary.
- B** Remove the rod screws **D** at each of the locations you will attaching the work surface brackets to the case(s).
- C** Place the work surface **A** on top of the case(s), align the bracket holes **B** with the rod holes.
- D** Reinstall the rod screws **D** through the brackets as illustrated below.
- E** Attach doors and insert drawers as necessary.



CLEANING AND CARE

Clean stainless steel surfaces using dry soft cotton cloth and stainless steel polish, buffing vertically with the line finish of the stainless steel.

Clean painted surfaces and coated surfaces using a mild dish soap and warm water solution. **DO NOT** use abrasive cleaners, glass cleaners, solvent based cleaners or furniture polish.



www.hercke.com | 866.767.3905 ext.16

Please visit **www.hercke.com** to download these instructions in your preferred language.



 herckē[®]
SERIES 7EVEN[®]

ASSEMBLY INSTRUCTIONS

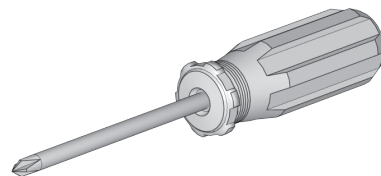
Work Surface Support

Assembly Instructions Overview

Please read this brief overview before assembling your Hercke Series 7even system. What follows is an outline of the order in which your assembly process needs to occur.

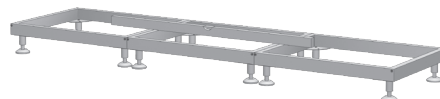
1

A Phillips head N0. 2 screwdriver is the only tool required to assemble Hercke® Series 7even® products. Depending on your installation requirements, other tools that may be helpful include a level, power drill and drill bits.



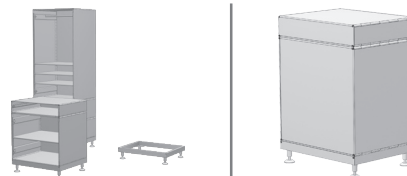
2

Assemble all platforms. Place platform in the desired location. Level each platform and make sure all platforms are level together.



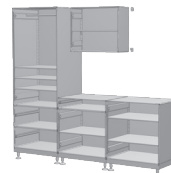
3

Pull platform out allowing yourself room to get behind the platform. Assemble cases. Stack cases and drawers on platforms in a single stack. Add Single E-Clips to the backside of cases and drawers. Slide the stack back into their final level position.



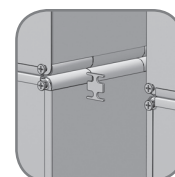
4

Assemble Overhead Storage Cases. Select overhead cabinet placement. Attach case using Wall Mount System or Channel Mount System.



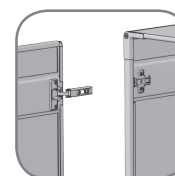
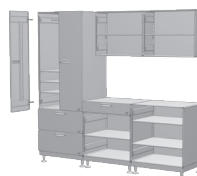
5

Fasten Single and Double E-Clips to adjoin cases and drawer modules.



6

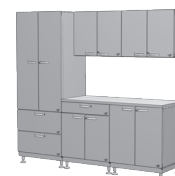
Snap door hinges to case hinge plates and adjust door positions.



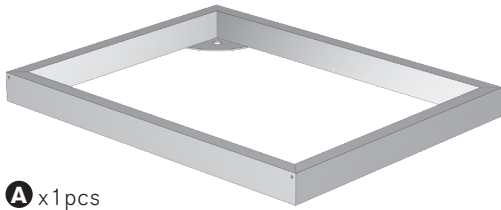
7

Attach work surface.

Chaos Defeated. Order Restored.



PARTS



A x1 pcs
Work Surface Support
Frame



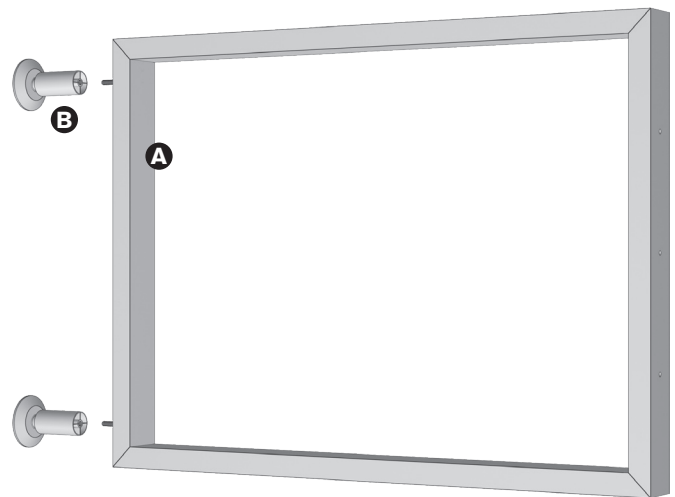
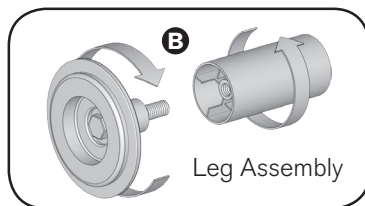
B x2 pcs
Legs



C x3 pcs
Screws
#2 Phillips Pan Head
Machine Screw

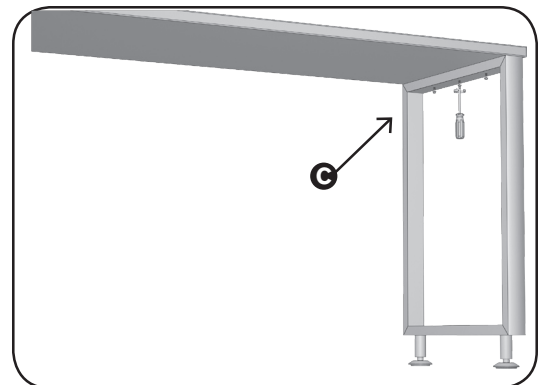
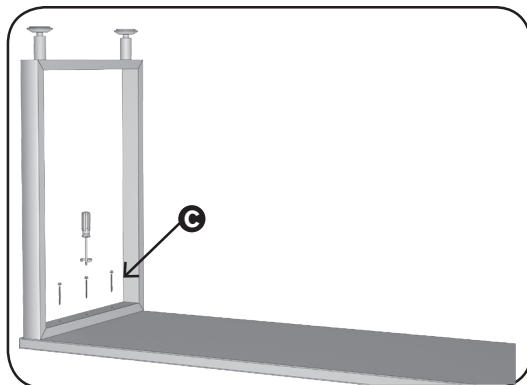
1

- A** Assemble legs. **B**
- B** Fasten legs **B** to pre-attached threaded studs on base of work surface support frame. **A**



2

- A** Place work surface support in desired position under work surface.
- B** If necessary, flip work surface and work surface support upside down in order to drill pilot holes.
- C** Secure work surface support with provided screws **C** as illustrated below.



CLEANING AND CARE

Clean stainless steel surfaces using dry soft cotton cloth and stainless steel polish, buffing vertically with the line finish of the stainless steel.

Clean painted surfaces and coated surfaces using a mild dish soap and warm water solution. **DO NOT** use abrasive cleaners, glass cleaners, solvent based cleaners or furniture polish.



www.hercke.com | 866.767.3905 ext.16

Please visit **www.hercke.com** to download these instructions in your preferred language.