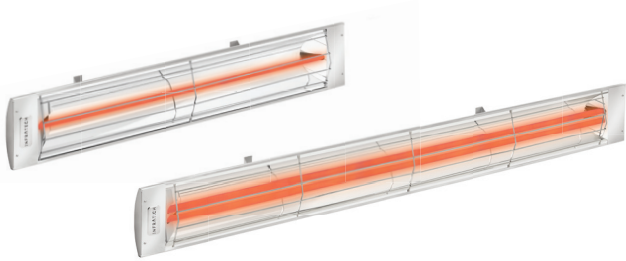
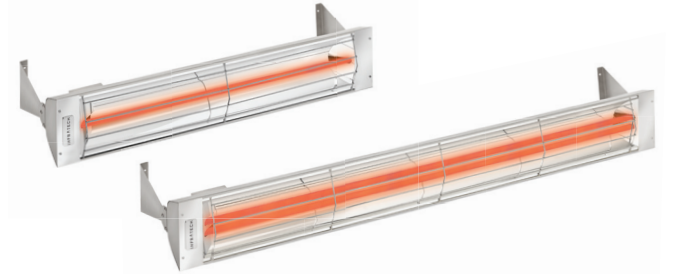


# Heater Comparison:

## *C/CD-Series and W/WD-Series*



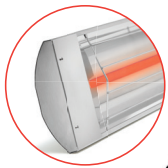
**C/CD-Series**



**W/WD-Series**

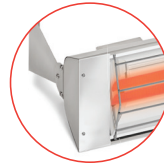
**C-shaped body with 2.5" depth**

Two inset mounting brackets for a floating appearance



**W-shaped body with 3" depth**

Two mounting brackets at each heater body end



**Ideal for wall or ceiling mount applications**



**Ideal for flush-mount applications**



**All heaters include:**

304 stainless steel construction



Eight standard colors with unlimited custom color options

American made 3-year warranty