

BULLNOSE CORNER GAUGE

INSTRUCTIONS

Effective September 2019

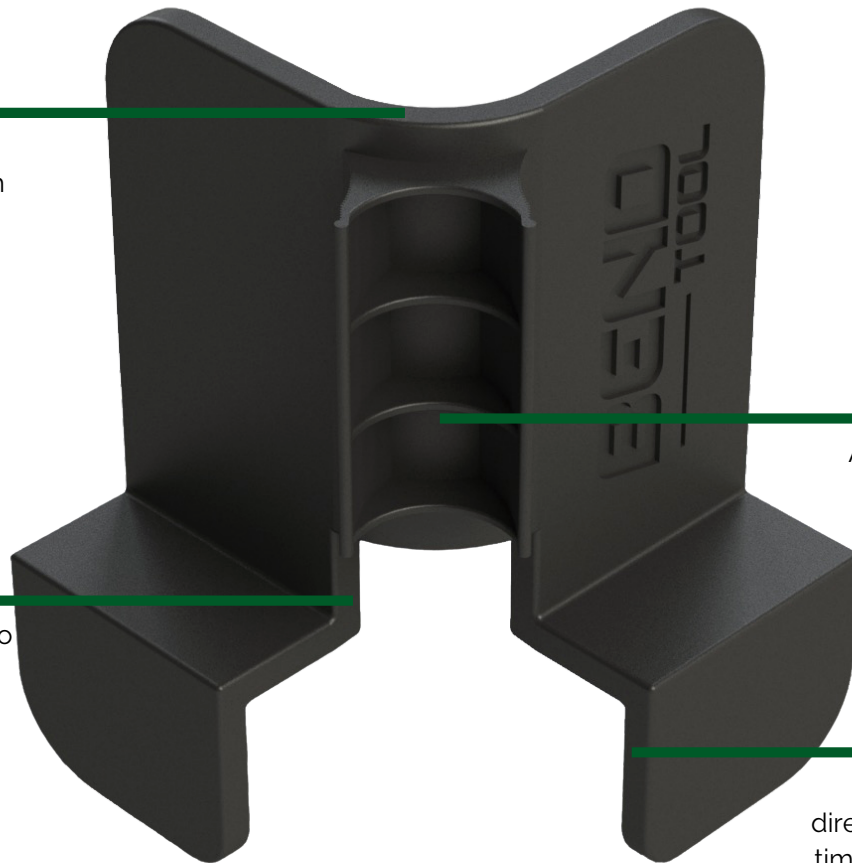
3/4" Bullnose Corner Gauge

Corner Marker

90 degree corner marker allows product to align with difficult walls accurately.

Wall Marker

Aligns with corner marker so you know where your trim piece should be when you install.



Durable Handle

Allows for solid, firm grip in tough to reach situations.

Trim Marker

Make your trim marks directly on the board, saving time and reducing mistakes.

Always refer to BendToolCo.com to confirm you are using the most up to date instructions.





Fig. 1 - Prep and Mark



Fig. 2 - Cut and Dry Fit



Fig. 3 - Assemble and Install

Prep and Mark

Your baseboard pieces should be at least slightly longer than your wall sections.

Fig. 1 Place the Bullnose Corner Gauge on the wall over the baseboard or trim. Mark from the wall down to the baseboard so you can line your board up to your mark. Mark both sides.

Cut and Dry Fit

Cut both of your boards slightly inside of your mark at 22.5-degrees each.

Fig. 2 In addition, cut your center piece to dry fit. Center pieces should also be cut at 22.5 degrees with a 5/8" width on the inside. Dry fit your pieces before assembly and installation.

Assemble and Install

We recommend assembling the pieces prior to installation for a tight fit.

Use glue, clamps or anything else to adhere the pieces to each other. Nail the baseboard along the studs, avoiding nailing directly into the corner.

For more information please contact us at info@bendtoolco.com.

Do you have more information on the other steps of the process - not just the tool?

Yes. Please go to our website or visit either of the following:

<https://bendtoolco.com/blogs/how-to/diy-installing-bullnose-baseboard-corners>

<https://www.youtube.com/watch?v=Y08YXNvQxiE>



The Bullnose Corner Gauge doesn't fit flush on my wall, will it work?

Yes. The tool is designed to fit flush against a true 90-degree bullnose corner. Gaps indicate the corner is not 90-degrees, consider adjusting your measurements to accommodate this. You should still be able to produce a professional looking corner.

How do I 'pre-assemble' the pieces?

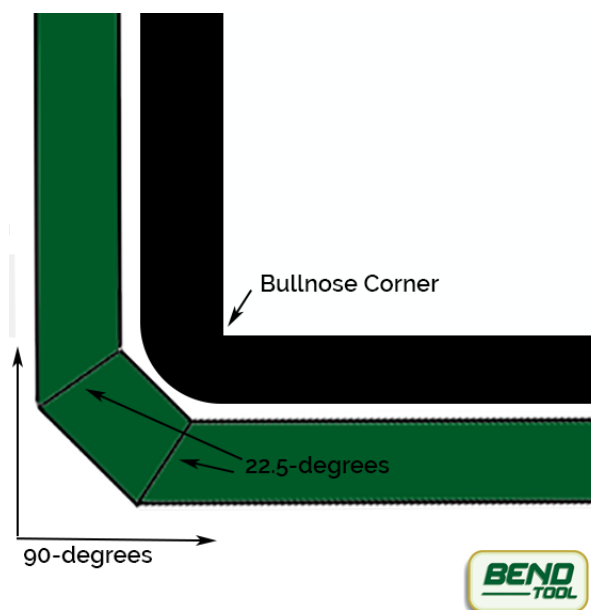
Pre-assembly simply means you are gluing the pieces before installing.

Use either wood glue or a fast drying glue for this. Apply the glue and hold the pieces together for as long as needed based on manufacturer's recommendations. Miter clamps and painter's tape are helpful with this process. For more information, visit the link above.

What angles do I need to make the cuts at?

All four cuts will need to be 22.5-degrees. If this isn't working, your corner may not be 90-degrees.

If the corner is not 90-degrees, the Bullnose Corner Gauge still works. You will need to adjust the angles on your miter.



Why do my pieces keep coming up a little short!?

Bullnose corners need to be a little more precise because of the extra cuts. We recommend adding at least 1/16" to every cut when you are first starting. You may need to go all the way to 1/8".