

QIG-57706_V1 Quick Install Guide

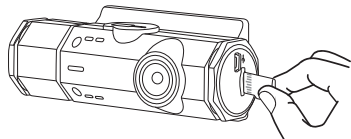


KARAOKE DASH CAM

Front & Rear Recording Digital Camera

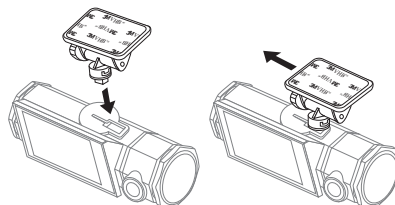
Quick Installation Guide

1.



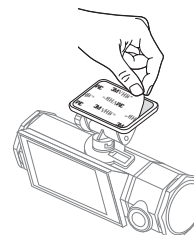
Insert MicroSD Card.

2.



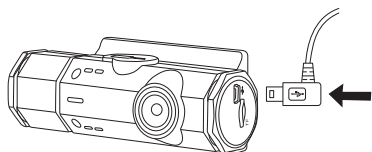
Insert mounting bracket to the top of the Dash Cam and slide to the left.

3.



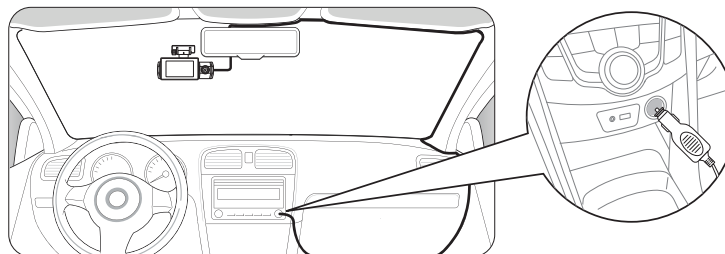
Peel off the 3M VHB™ adhesive tape.

4.



Plug in power cable.

5.



Mount the Dash Cam to the windshield and route the power cable to your vehicle's power outlet.

NOTE: Power on and test camera before mounting.

QIG-57706_V1

CONNECT WITH US |  |  |  | @letsyada

2975 Red Hill Ave., Ste. 100, Costa Mesa, CA 92626
1.866.294.9244 | customer@horizon-brands.com
©2020 Yada. All rights reserved.

www.letsyada.com