

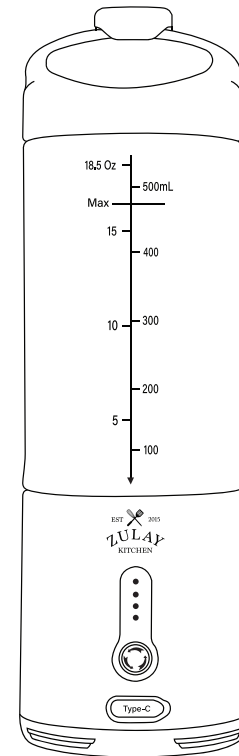


Our Story

Zulay Kitchen is named after my extraordinary mother, Zulay. She was raised in poverty-stricken Venezuela and, against all odds, brought my brother and me to live in the US. As a single mother, she worked extra-long hours but still found time to cook healthy meals for us. At the time, I thought nothing of it. But now that I'm married with children of my own, I see how much of a super-hero mom she really was.

My wife and I created Zulay Kitchen to make shopping easier than ever in today's busy world. We believe that cooking should be fast and easy, so you have more time to enjoy with your loved ones.

Aaron Aaron Cordovez, Co-Founder of Zulay Kitchen



PORTABLE BLENDER INSTRUCTION MANUAL

ZULAY ✕ KITCHEN

LIFETIME WARRANTY REGISTRATION AND MORE



JUST A FEW STEPS AWAY:



Open the Camera App on your phone



Point to the code and focus your camera on the code



Click the notification that pops up*

*If you're having trouble, download a QR Code App or go to this link:
<https://www.zulaykitchen.com/warranty>

We Are Here For You

If you have a question or need support, let us know.

Zulay Kitchen: Clearwater, Florida, USA

☎ (727) 386-9117

🕒 Mon-Fri 9:00 AM - 5:00 PM (EST)

✉ support@zulay.net

Technical Specifications & Safety Instructions 01-02

Getting to Know Your Portable Blender 03

Using Your Portable Blender 04

Cleaning & Maintenance 05

Troubleshooting 06

Recipes 07-10

Lifetime Warranty Registration 11

Technical Specifications:

Bottle capacity	18.5oz
Motor model	7.4V
Motor rotation	22000RPM
Working current	10-18A
Battery capacity	4000mAh
Charging cable	USB Type-C
Charging time	2 hours
Length of a single cycle	45 seconds

To reduce the risk of fire, injury, or electrical shock, and to extend the life of your electrical appliance, please read and follow all the information in this manual before using and save it for future reference.

- Remove any packaging materials before using the portable blender for the first time and set aside.
- Do not submerge the power cord or base into water or other liquid as this may cause an electrocution.
- Make sure to use the jar and lid that came with your blender. Using other jars or lids can be dangerous and may result in injury or damage to the blender.
- Before using the blender, make sure the lid and jar are securely fastened. An inadequately secured lid or jar can result in injury or damage to the blender.
- The safety mechanism will activate if the device stops suddenly due to large fruit particles. The blender will automatically switch off, and the blue lights will flash. To resume operation, simply press the power button twice to turn on the machine. To ensure that the larger particles are thoroughly mixed, shaken the blender during operation.



Antioxidant Delight

Ingredients:

- 1 cup of water or your favorite milk
- 1/3 of frozen banana
- Ice
- 1 tsp of vanilla extract
- 1/4 cup of blueberries
- 1 scoop of protein powder
- 1/4 cup of raspberries

Instructions:

1. Add the water/milk and ice to the blender first.
2. Add the blueberries, raspberries, and frozen banana.
3. Add the vanilla extract and protein powder.
4. Blend all the ingredients until smooth. To ensure that all the particles are blended, shake the blender a few times during the blending process.
5. Taste and adjust sweetness if necessary by adding more berries.
6. Enjoy your smoothie immediately.

Tip: If desired, you can add your favorite sweetener to enhance the taste of the smoothie.

Green Bliss

Ingredients:

- 1 cup of milk (dairy or dairy free)
- 1/2 cup of spinach
- 1/2 of a frozen banana
- 1/4 of an apple
- 1/4 of an avocado
- 1 scoop of your favorite protein powder (optional)

Instructions:

1. First add milk to the blender.
2. Add the remaining ingredients and begin blending.
3. To ensure all particles are blended, shake the blender during operation.
4. Enjoy immediately after blending.



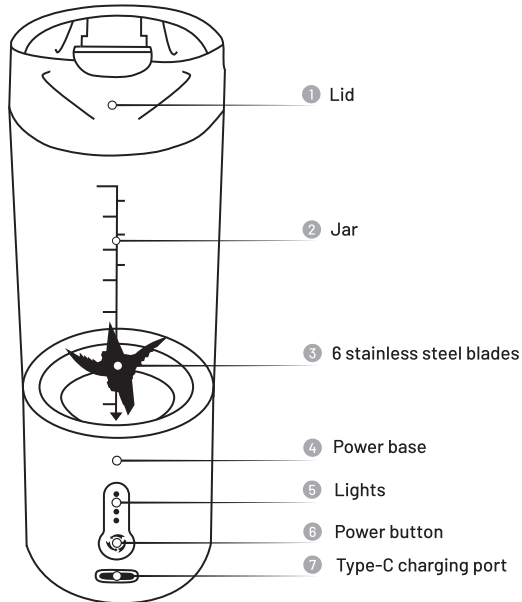
- To clean the jar and lid, feel free to use a dishwasher. However, the power base should never be placed in a dishwasher.
- Do not wash accessories using scouring pads, abrasive materials, or corrosive cleaners.
- This appliance is not intended for use by persons (including children) with reduced physical, sensory or mental capabilities or lack of experience and knowledge, unless they have been given supervision or instruction concerning use of the appliance by a person responsible for their safety.
- This is not a toy. Keep out of reach of children and pets.
- Make sure to avoid touching the blades with your hands!
- To ensure the durability of the device, avoid overloading it. Always add liquid first and leave room at the top for the ingredients to move around. This will help the device function properly and last longer.
- If the product is not in use, please remember to charge it at least once a month to avoid battery exhaustion.
- If water gets into the charging port, allow the device to air-dry for at least 24 hours before attempting to use it or charge it.
- Do not attempt to repair or disassemble the product on your own, as doing so will void the warranty. Please contact customer service.

If you have a question or need support, please let us know.

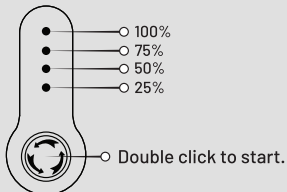
☎ (727) 386-9117 ☎ Mon-Fri 9:00 AM - 5:00 PM (EST) ✉ support@zulay.net

GETTING TO KNOW YOUR PORTABLE BLENDER

This diagram lists out the main parts of the portable blender. Refer to it as needed when reading the rest of the manual



Charge level lights



Cleaning brush



USB-C charging cable



Choco-Peanut Banana Blast

Ingredients:

- 1 cup of unsweetened almond milk or your favorite milk
- Ice
- 1/2 of frozen banana
- 1 tbsp of creamy peanut butter
- 1 scoop of chocolate protein powder

Instructions:

1. To make the shake, first add milk and ice to the blender, then add the remaining ingredients and blend until smooth.
2. To ensure that all the particles are blended, shake the blender a few times during the blending process.
3. Enjoy the shake immediately after blending.

Tip: Instead of using protein powder, you can substitute with chocolate milk or cocoa powder.



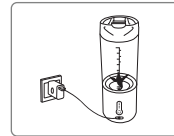
Tropical Twist

Ingredients:

- 1/3 of frozen banana
- 1/4 cup of frozen mango
- 1/4 cup of frozen pineapple
- 1 scoop of vanilla protein powder
- 10 oz coconut milk
- Ice

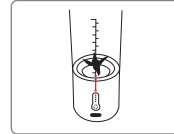
Instructions:

1. First add milk and ice to the blender.
2. Add the remaining ingredients and begin blending.
3. To ensure all particles are blended, shake the blender during operation.
4. Enjoy immediately after blending.



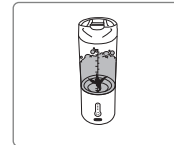
Step 1:

Charge your portable blender with the included USB cable for 3 hours or until all 4 lights are lit up.



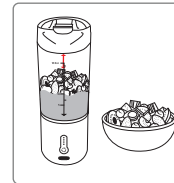
Step 2:

Ensure that the arrow on the jar is aligned with the power button. The four lights will light up.



Step 3:

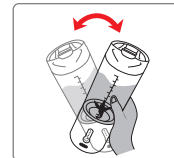
Before first use, clean your blender by blending water with a drop of soap, close the lid and press the power button twice. Rinse with warm water. For detailed cleaning instructions, refer to the Cleaning & Maintenance section.



Step 4:

First, add 10oz of liquid, and then add solid ingredients cut into pieces. Please leave some space at the top.

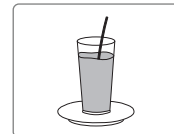
Important: To ensure the durability of the device, avoid overloading it. Always add liquid first and leave room at the top for the ingredients to move around. This will help the device function properly and last longer.



Step 5:

To blend for one 40-second cycle, tighten the lid and press the power button twice. Repeat as necessary for a thicker blend.

Tip: To ensure that the particles are thoroughly mixed, shake the blender during operation.



Step 6:

Enjoy your blended creation, and don't forget to clean the blender as soon as you're done using it.

Clean the jar and lid after each use to avoid fruit juice residue buildup.

- 1 Add 15 oz of warm water, following the markings on the jar.
- 2 Add 1-2 drops of dishwashing liquid.
- 3 Put the lid on and blend for a few seconds.
- 4 Pour out the water with dishwashing liquid and thoroughly rinse the jar and lid with fresh water.
- 5 For a deep cleaning, run your blender with either 1/4 cup of warm water and 3/4 cup of white vinegar, or 1/2 cup of baking soda and 1/7 cup of warm water.
- 6 If you encounter a stubborn stain, detach the cup from its base and use a soft brush to clean it. Similarly, use the included brush to clean the blades and avoid using your hands. After cleaning, be sure to rinse everything with water, but avoid getting water on the power base.

IMPORTANT: Avoid getting water on the power base. Do not submerge it. Clean the power base with a soft, slightly damp cloth. Make sure it is fully dry before turning it back on.

IMPORTANT: If water gets into a charging port, allow the device to air-dry for at least 24 hours before attempting to use it or charge it again.

DISHWASHER

To clean the jar and lid, feel free to use a dishwasher. However, the power base should never be placed in a dishwasher.

Before using the product, please ensure that the battery is fully charged and that the accessories are clean. This product features safety protection, and will only operate when the cup is securely placed on the base.

Problem	Reason	Solution
1. Red lights flash slowly.	Low battery.	Charge the battery.
2. Unable to start the device or the blue lights flash.	The arrow on the jar is not aligned with the power button.	Simply tighten up the jar.
3. The blue lights flash while operating.	The motor in the blender is locked up.	If there are large particles in the blender, try restarting the device and shaking it while it's blending. If the problem persists, remove the larger particles and cut them into smaller pieces. Put them back in and restart the device.
4. Leaking.	The lid is not tightened enough, or the silicon loop inside the lid is out of place.	Tighten the lid. Make sure the silicone loop is in place.

If after reviewing the troubleshooting guide, the problem is not resolved, do not attempt to repair or disassemble the unit yourself. Please contact customer service for assistance.

If you have a question or need support, please let us know.

☎ (727) 386-9117 🕒 Mon-Fri 9:00 AM - 5:00 PM (EST) ✉ support@zulay.net