



by ZULAY KITCHEN

Super Automatic
COFFEE MACHINE



INSTRUCTION MANUAL

CONTENTS

PAGES

1.	SAFETY INFORMATION.....	01 - 02
2.	PRODUCT ORIENTATION.....	03 - 04
3.	ACCESSORIES.....	05
4.	MAIN FEATURES.....	06
5.	MAIN FUNCTIONS.....	07
6.	MAIN FUNCTIONS MENU.....	08
7.	GENERAL SETTINGS MENU.....	09
8.	SETTING UP THE UNIT.....	10 - 12
9.	REMOVING & REPLACING..... THE BREW GROUP	13
10.	MAKING A PRE-SET COFFEE.....	14 - 15
11.	SPECIAL COFFEE RECIPES.....	16
12.	COFFEE GROUND CHUTE.....	17
13.	MAKING HOT WATER, HOT..... MILK, MILK FOAM	18
14.	CUSTOMIZATION OF THE MAIN..... COFFEE DRINKS	19
15.	PROFILE & CUSTOMIZED COFFEE.....	20
16.	CUSTOMIZING MACHINE SETTINGS..... /GENERAL SETTINGS	21 - 23
17.	CLEANING & MAINTENANCE.....	24 - 25
18.	TROUBLESHOOTING.....	26 - 27
19.	WARRANTY & HOW-TO VIDEO..... INFORMATION	28
20.	CONTACT INFORMATION.....	29
21.	INDEX.....	30

Thank you For Your Purchase

Thank you for choosing the **MAGIA** Super Automatic Coffee Machine for your home coffee needs. This user manual includes important information to help you operate the machine safely, and to help you create barista level coffee drinks in the comfort of your home.

Please read this manual prior to using. The simple maintenance actions are important to keep your machine operating and continuing to make high quality drinks for years to come.

If any issues ever come up, please feel free to reach out to our caring Kitchen Happiness customer service team.

We hope you enjoy using your new coffee machine, and sharing some great coffee with friends and family!

SAFETY INFORMATION



Please read this manual before using the unit and keep it for future reference. Operate the machine as directed.



This unit is meant for indoor, personal household use only. Not for commercial use.



This unit should be set up on a dry, flat, stable surface, and operated in a ventilated area.



This is not a toy. Keep the machine and its packaging out of reach of children and pets to avoid injury.



This unit is only to be operated on a standard 120V power supply with a 3-prong outlet that has a functioning grounding wire.



Please ensure that the water is not below the floating white indicator (about 1" of water).



Do not put anything other than coffee beans into the bean hopper. Never put liquid, syrup, powder, or other substances into it.



Turn off and unplug the machine before opening the side door to clean inside the unit. This is not necessary if you are only emptying the waste basket or dust pan.



This unit is meant for use in environments with a temperature between 50°F – 113°F (10°C – 45°C). Do not use or store this machine in freezing temperatures as frost may damage the machine.



Keep the unit away from heat sources. Do not place the unit on or near a heated stovetop. Never place the unit inside an oven, over or near open flames, or in any other location that could cause damage from fire or heat.

SAFETY INFORMATION



When adding water to the unit, use cold or room temperature water. Do not add hot water to the water tank because it could damage the unit.



Keep the unit dry and in a location where there is no risk of it being submerged, and where there is no risk of water entering the internal components. When cleaning, be sure to use a soft, clean rag. If water is needed for cleaning, you can use a slightly damp cloth.



When using the nozzles for hot water and steam, do not touch the metal tubes and do not put any body part in front of the nozzle, and make sure no person or animal is close to the nozzle. The water and steam coming out are hot and could cause injury.



If a problem or malfunction occurs, refer to the Troubleshooting section. If this does not resolve it, call the Customer Service team. Do not perform modifications or internal repairs without written approval and instructions from customer service.



If this unit will not be used for an extended period of time, clean it before storing to prevent organic growth. Empty the Water Tank, clean out the Milk System, clean the drip tray, and clean out the interior parts including the coffee waste basket.

If you have any questions about the unit or its operation, please call or email customer service.

☎ +1(727)386-9117 ☎ Mon-Fri 9:00 AM – 5:00 PM (EST)

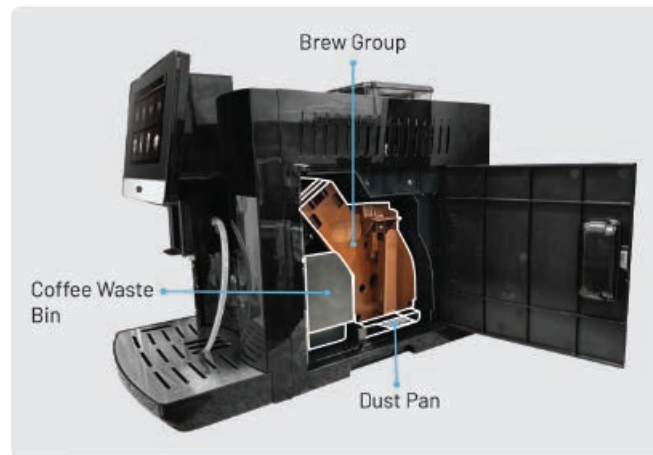
✉ support@zulay.net

PRODUCT ORIENTATION

Below is a diagram showing the parts of your coffee machine. Refer back to this as needed when reading the rest of the manual.



PRODUCT ORIENTATION



ACCESSORIES



Milk Tube (x2)



MAIN FEATURES

Here is a summary of the key features that your coffee machine has. Read the entire manual for more details.



Intuitive 7" High-Res Touch-Screen Interface



Programmed with 11 Speciality Coffee Drinks & 18 Coffee Recipes



Bean Hopper Capacity of 1/2 lb (250g)



Removable 61 fl. oz (1.8L) Water Tank



Adjustable Grind Control with Precision Burrs



Double Brewing Function to make two coffees at the same time: Espresso, Latte, Cappuccino, Flat White and Cafe Macchiato



Automatic Self-Cleaning of Brew Group & Milk System ensures hygiene and consistently great tasting coffee



Removable Drip Tray, Coffee Waste Bin, and Water Tank for easy cleaning



Customizable Coffee
Control the Temperature, Strength, & Volume of your coffee and the amount of Hot Milk or Foam



Programmable Profiles Up to 10 Different Users
Perfect for any household



Compact Design
Fits beautifully on your kitchen countertop. Includes adjustable Coffee and Milk Foam System to fit your favorite coffee cup.



One Touch Automatic Milk Foam and Hot Milk System
Make Milk Foam from your favorite Milk and Milk Substitutes, including Whole Milk, Almond Milk, Rice Milk, Oat Milk etc.

MAIN FUNCTIONS

Intro Screen



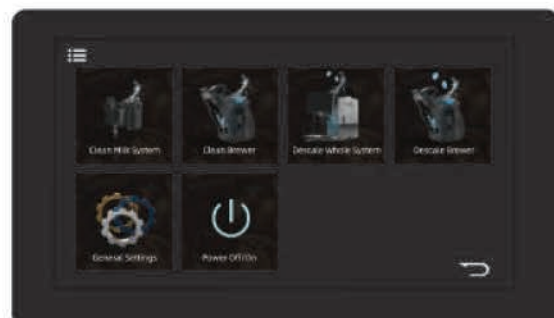
This is Intro Screen - this means that your Magia Coffee Machine is ready to get started. Simply touch the screen.



This is the menu you can choose your drink from.

- This is where profiles and personalized coffee drinks will be created and saved. See page 20 for details.
- Press here to find Special Coffee Recipes. See page 16 for details.
- Press this icon to switch from using beans in your Hopper, and change to adding directly coffee grounds to the Ground Chute. Please see page 17 for directions.
- This icon brings you to the Main Functions Menu and settings of the Magia

MAIN FUNCTIONS MENU



Clean Milk System: Press this icon to immediately clean your milk system and follow the steps on the screen.



Clean Brewer: Press this icon to immediately clean the Brew Group and follow the steps on the screen.



Descale Whole System: Press this icon to perform a full descale of the whole system and follow the steps on the screen. For more information on this see page 25.



Descale Brewer: Press this icon to perform a descale of only the Brew Group and follow the steps on the screen. For more information on this see page 25.

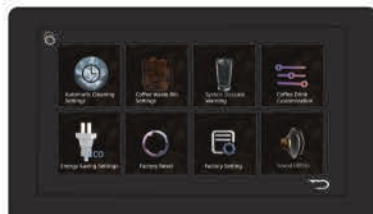


General Settings: This icon takes you to all of the automatic functions of the Magia which you can customize to your preference, this includes the following: Automatic Cleaning Settings, Auto Shut Off, Waste Bin Settings, Auto Descaling Settings, Coffee Drink Customization, Factory Reset, Sound and more. See page 9 for more details.



Power Off/On: Press this button to turn the machine off. Touch the screen to turn it back on.

GENERAL SETTINGS MENU



Automatic cleaning settings: Press this icon to change the amount of delay time before your Magia will perform Auto Cleaning of the Milk System and Brew Group. See page 21 for details.



Coffee Waste Bin: Press this icon to change the warning settings on when to empty your Coffee Waste Bin. See page 22 for details.



System Descale Warning: Press this icon to adjust the descale warning settings based on how much water is used before telling you to descale your Magia. See page 22 for details.



Coffee Drink Customization: Press this Icon to adjust all the exact settings of each of the drinks from the Main Coffee Menu. See page 19 for more details.



Energy Saving Settings: Press this icon to adjust when your Magia will Auto Shut Off based on how much time it is idle. See page 22 for details.



Factory Reset: Press this icon to reset your system and put all the Coffee Drink Customizations back to the original settings for all drinks. See page 23 for details.



Factory Settings: This is used by our customer service team to help find out what might be wrong, if there are any issues with your machine. If you have any questions, please contact customer service.



Sound Off/On: Press this button to turn the sound off or on.

SETTING UP THE UNIT



1. Remove the coffee machine from the box and place it on a suitable surface.



2. Remove all packing materials and tape.



3. Ensure the Brew Group, Dust Pan, and Waste Bin are in place.



4. Place the front Drip Tray on the product.



5. Add water to the tank up to the Max Fill line. Do not overfill.

SETTING UP THE UNIT



- 6.** Add at least 1oz (1/8 cup) of coffee beans into the Bean Hopper.



- 7.** Install the Milk System to the front of the unit. Attach the Milk Tube into the hole on the right side of the Milk System.



- 8.** Plug the machine in.



- 9.** Touch the screen with your finger. At this time, the machine will start up, perform a self-test, heat water, and self-clean. Self-cleaning uses about a 1/4 cup of water. The tray can hold about 3 cups of water.



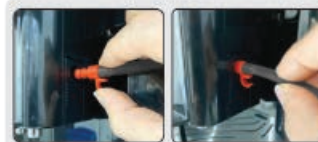
- 10.** Once the Main Drinks Menu is available, your machine is ready for use. Do not try to operate it before this is displayed.

SETTING UP THE UNIT

Installing the Milk System



How to attach it on the front of the machine



How to attach the tube to the Milk System



Using the Bean Hopper



Coarse +
Weaker



Fine +
Stronger

REMOVING & REPLACING THE BREW GROUP

If you have any trouble with getting the Brew Group back in place or closing the door, **DO NOT FORCE IT**. Please watch the How-To Videos described on page 28 and call customer service as needed. Forcing the Brew Group incorrectly or forcing the door shut, can cause damage to your Magia and make it non-functional.

REMOVING THE BREW GROUP



1. Open the door on the side of the unit.



2. Take out the Coffee Waste Basket so this is not in your way when trying to remove the Brew Group.



3. Grab the handle and press down with your thumb on the top surface to unlock it, and pull it out.

REPLACING THE BREW GROUP



1. Make sure the Brew Group is in the standard configuration.



2. Slide this back into the unit, making sure it is in the track grooves. You will hear it click once it is back in place.



3. Put the Coffee Waste Basket back in place and close the door.

MAKING A PRE-SET COFFEE

The most popular coffee drinks have been programmed into the Magia Coffee Machine. The preparation of the coffee and the milk/foam are set to default settings, and you have the option to customize your coffee. Please see page 19 for details.



1. Make sure your coffee machine has enough water in the Water Tank and enough coffee beans in the Coffee Bean Hopper. If the drink you want to make requires milk, pour fresh cool milk into a cup and set the Milk Tube into the cup. Make sure the other end is properly attached to the Milk System.



2. Touch the screen. Allow up to 2 minutes for the machine to complete the start up and/or cleaning functions.



3. Put your coffee cup under the dispenser. Position the height close enough to your cup prevent splashing. It is recommended to warm up your cup. This can be done by rinsing the cup with warm water or using the Cup Warmer on the top of the machine.

MAKING A PRE-SET COFFEE



4. Press the icon for the drink you want to make.



5. Relax and enjoy the aroma while the machine does all the work.




6. Wait for the machine to finish making the drink, which will be indicated on the screen. Remove your cup and enjoy!

SPECIAL COFFEE RECIPES

The Magia comes with delicious coffee recipes that need more than coffee and milk to prepare. To make these special coffee drinks follow the below steps:



1. Press the Coffee Recipes Icon () on the top left of the main screen. Place your cup under the dispenser. Position the height of the dispenser low enough to prevent splashing



2. Select (touch) which drink recipe you want to make from the menu.



3. Take note of all the ingredients needed on the screen. Collect all ingredients so you have them to hand. If milk is included in the recipe, set up the milk system with enough milk.

Note: the screen may turn off after being idle, so you may need to re-select the drink after you finish collecting the ingredients.



4. Follow the instructions on the screen as it walks you through the steps of the coffee recipe, and enjoy!

COFFEE GROUND CHUTE

To use the Coffee Ground Chute in your machine, follow these steps:

1. Open the lid of the Coffee Bean Hopper, and remove the lid for the coffee grounds chute. Use the included white scoop (1/8 cup) and put a full scoop of coffee grounds into the chute.
2. Put the lid back on the chute and close the Coffee Bean Hopper lid.



Important: Do not allow anything other than coffee grounds into this chute.



Do not put more than one scoop (1/8 cup) per brewing cycle. Improper use could damage the machine.

3. Press the (☿) icon on the top right of the Main Coffee Menu screen. This will now look like this (☿). This means you have switched to the coffee powder instead of beans. Select the drink you want to make.

Note: In this mode, you will not be able to brew double-serving drinks. These will turn gray on the menu and can not be selected until you return the the regular mode (whole coffee beans)

MAKING HOT WATER, HOT MILK, MILK FOAM

MAKING HOT WATER



To make Hot Water, go to the Main Coffee Menu screen. Press the arrow on the right side of the screen to scroll to the last screen. Place your cup under the dispenser and position it so it is directly over the cup (to reduce splashing). Select the Hot Water icon. Wait for the machine to fill your cup with hot water. If more hot water is needed, press the icon again. If you need to stop the hot water from being dispensed during the cycle, press the (X) button.

MAKING HOT MILK & HOT MILK FOAM



Fill a cup with the milk of your choice. Attach the Milk Tube to the frother attachment, and place the other end of the tube in the cup of milk. Place your cup under the dispenser of the machine and position it directly over the cup (to reduce splashing). Go to the Main Coffee Menu, and scroll to the last screen using the arrow button on the right side of the screen. Select the Hot Milk or Hot Milk Foam icon, depending on which one you want. If you need more hot milk or froth, press the button again. If your cup is nearly full and you need to stop mid cycle, press the (X) button.

CUSTOMIZATION OF THE MAIN COFFEE DRINKS



To customize the main coffee drinks, go to the (⋮) from the Main Coffee Menu, press (⚙️), and press Coffee Drink Customization.



The menu with all the drinks will appear, press the drink you want to customize.



Adjust the elements such as temperature, amount of coffee used for this specific coffee, etc. Press (↩) and return to the Customization Menu. Repeat the same steps with other coffee you would like to customize.



After finishing customization, press (↩) 4 times to go back to the Main Coffee Menu. Now press your drink icon and enjoy the aroma of your customized coffee being made. These customized settings will be saved from this point on, and you may adjust them at any time by repeating this process. If you wish to go back to the default coffee drink settings, go to the Factory Reset Icon. See page 23 for details.

PROFILE & CUSTOMIZED COFFEE

CREATING A PROFILE



Press the (👤) icon on the top left corner of the screen. You can rename the icon by touching the username on the top of the screen and using the touch screen keyboard to customize your name. Press (✓) to save username.



Press (+) to add drinks that you would like to have under your profile, and press (-) to delete the drink.



Select the drinks you want to include in your profile. You can select all drinks or specific drinks you enjoy. Press the check box to select them. This can be easily updated at any time.

CUSTOMIZING DRINKS



To customize your drink, press saved coffee icon under your profile. The machine will start making the drink. Simply press (⋮) on the bottom left corner and customization settings will appear.



Adjust the level of each setting to suit your personal taste preference. Then press (↩). The customized drink is now saved. You'll need to press (✕) as the drink that is being made still has previous settings. Press your saved drink again and enjoy the aroma of your saved customized drink being made.

CUSTOMIZING MACHINE SETTINGS/ GENERAL SETTINGS

You have the option to change the machine settings listed below to make its use as smooth as possible for you. To access these settings, select the (≡) icon in the top right corner of the Main Coffee Menu, and then select the (⚙️) settings icon. Then select the icon listed below to adjust the settings for that function.



AUTOMATIC CLEANING SETTINGS



Milk System Auto Clean: You can adjust how long the machine will idle before it begins to clean the Milk System. You can make it delay between 0 to 60 min. The current default settings is 60 min. It is recommended to keep the Milk System clean for hygiene reasons, but it is optional. Press this button and adjust how long the machine will idle before it begins to clean the Milk System after each brewing.



Brew Group Auto Clean: You can adjust how long the machine will idle before it begins to clean the Brew Group. You have the option to set this to 0 minutes if you do not want it to perform auto cleaning. Default settings are recommended, but you change this to best suit your needs.

CUSTOMIZING MACHINE SETTINGS/ GENERAL SETTINGS



COFFEE WASTE BIN SETTINGS



Waste Basket Emptying Level: Set the number of "coffee-waste cakes" (1 made per single brew cycle) that the waste basket will hold before it prompts you to empty it. It is recommended to empty this at least once per week to prevent organic growth. Set this to an amount that is most workable for you.



SYSTEM DESCALE WARNING



Entire System Descaling: Set how often you want the machine to descale the Entire System. This is based on the amount of water that your Magia uses before it prompts you to descale the system.



ENERGY SAVING SETTINGS



Idle Time Before Auto Shut off: Set when you want the machine to auto shut off. This can be set between 0 to 24 hours. We recommend to keep these settings at 5 hours or more. Be aware that the machine performs self-cleaning every time it turns off/on, and if it's adjusted to less amount of hours, the machine will clean itself many times a day which may cause Drip Tray overflowing. Please make sure to have a cup on the tray to catch the water. To turn the machine back on, simply touch the black screen.

CUSTOMIZING MACHINE SETTINGS/ GENERAL SETTINGS



FACTORY RESET



Factory Reset: If you want reset to the factory settings, press this button. All settings will return to the original default settings. Profiles will not be erased but the customized setting levels will all be restored the factory default settings.



SOUND OFF/ON



Sound Off/On: if you would like to turn the sound off or on, press Sound Off/On button. The picture will be colorful when the sound is on and it will be gray if the sound is off.



FACTORY SETTINGS

Factory Settings: This button is used by our customer service to get the information about the machine in case something isn't properly working. Please contact our customer service. ☎ +1(727) 386-9117

CLEANING & MAINTENANCE

This is a summary of the regular cleaning and maintenance actions that will be needed.

AFTER EACH BREW

Brew Group: The Brew Group will automatically clean itself every time the machine turns on/off or has been idle for too long. You may adjust the delay time for cleaning in the Customization Settings. See page 21 & 13 for more details.

Milk System: The Milk System automatically cleans itself when machine is turned on and before it turned off.

Additionally the Milk System can be set up to Auto Clean after each use. This means that if you make a coffee drink which uses the Milk System, the Magia will Auto Clean the Milk System after a few mins of it being idle. Currently the default settings for this function are 60 minutes. Please see page 21 for further details.

Important:

The Milk Tube part of the Milk System needs to be cleaned regularly, this will prevent the tube from getting dirty and organic growth from happening.

If the Milk Tube gets dirty, we recommend that you use the provided cleaning brush and perform the Clean Milk System function. Please see page 8 for details.

WEEKLY

Drip Tray: Depending on use, this may need to be emptied every week or more often. Simply remove the tray and pour the water into your sink and wipe the top plate. Every couple of weeks, you can clean the interior surfaces to prevent any buildup.

Coffee Waste Bin: This is a small black container that is to the left of the Brew Group when you open the side door. It will need to be emptied when full. There will be a message on the screen to prompt you to empty the basket when it is full. Depending on how much coffee you brew, this would be done about once per week. You can customize the settings of when the Coffee Waste Bin is considered full. See page 22 for details.

CLEANING & MAINTENANCE

MONTHLY OR AS NEEDED

Display Screen: If this gets dirty or oily, wipe it clean with a clean, slightly damp microfiber cloth. Do not use chemicals and avoid too much water as these could cause damage.

Dust Pan: Pull out the tray, dispose of the loose grounds, and then put back in place.

Interior Brewing Group Area: If you see a mess when opening the side door, turn the unit off and unplug it. Remove the Brew Group, Dust Pan, and Waste Bin. Use the brush to sweep it clean. If needed, wipe with a clean, slightly damp microfiber cloth.

Descaling the Brew Group: Depending on the hardness of the water you are using, you may need to descale the Brew Group occasionally. Press the (☰) icon on the top left corner of the Main Coffee Menu screen. Then press the Descale Brewer (☞) icon.

Follow the prompts on the screen. If you do not have descaling tablets, you can alternatively add a cup of vinegar to the water tank. It is recommended to place a cup under the dispenser to collect the water during the descaling process. You will need to empty the cup or the Drip Tray more than once during the cycle to prevent water from overflowing.

Descaling the Entire System: When needed, press the menu (☰) icon on the top right of the Main Coffee Menu screen. Then press the Descale Whole System icon (☞). The screen will prompt you to complete the steps. Place a descaling tablet or 1 cup of vinegar in the water tank when directed to. Be aware that a lot of water will be used, so use a cup to collect water and empty this regularly during the descale cycle to prevent the Drip Tray from overflowing.

TROUBLESHOOTING

Machine is not turning on: Check that the plug is correctly attached to the socket of the unit, and that it is properly plugged into an active outlet. "Intro Screen" will show once the power is restored.

Coffee dispenses too slowly/slow dripping: This has 4 possible causes.

- a) Coffee grounds are too fine – adjust the grind adjustment knob clockwise to a coarser setting.
- b) Low on water – fill the water tank to the MAX line, and check that it is correctly installed.
- c) Brew group is dirty – clean the Brew Group using the automatic cleaning function. You can also remove the Brew Group, rinse it clean with warm water, and allow it to fully air-dry before replacing it. Please scan QR code on page 28 for How-To videos or go to <https://www.zulaykitchen.com/pages/magia-coffee-machine-manual>
- d) Blockage from mineral deposits – descale the machine following the steps. See page 25 for instructions.

After doing each handling above, make a cup of hot water to check if the water flow has been handled.

Very weak coffee: There are 4 potential causes.

- a) Coffee beans are damp – throw these away and replace with dry coffee beans.
- b) Grounds too coarse – turn the grind setting knob to the left (counter-clockwise) to make them finer.
- c) Brewing for the first time – the first few cups of coffee can be watery because the system is adjusting. After brewing about five cups of coffee, it will consistently brew proper strength coffee.
- d) Default settings may be too weak for your preference. Set custom settings with increased coffee amount. See page 16 for more details.

We recommend to use dark roasted beans for stronger coffee.

The coffee is not hot enough: The Heating Element in the machine needs time to warm up. Make a couple cups of hot water or adjust the temperature (see page 19).

TROUBLESHOOTING

Strange Noises from Coffee Grinder: A foreign object could have gotten into the grinder. Ensure the machine is turned off & unplugged before inspecting the grinder. Contact customer service for assistance.

Note: The Brew Group can make noise as it completes the brewing cycle. This is normal.

Poor Quality Milk Foam: There are 4 possible reasons for this:

- a) Milk System or Milk Tube not installed correctly - Please refer to page 12 of this manual to ensure that both the Milk System and the Milk System Tube are correctly attached and installed.
- b) Milk System is Dirty - clean the milk system and milk tube. See page 24 for instructions.
- c) Blockage from Mineral Deposits - descale the machine. See page 25 for instructions.
- d) Different Milk Type - different milks and milk alternatives create different foam results. We have found that Whole Milk, 2% Milk, Almond Milk, Oat Milk, and Coconut Milk work best with the Magia Coffee Machine.

Drip Tray Overflowing/Filling Up Too Quickly: Your machine is set up to do an Auto Clean function every time you turn it on/off or the machine is idle. Please be aware of this and ensure the drip tray is emptied regularly. For information on how to change the cleaning frequency, see page 21.

IMPORTANT!: When descaling, the machine will use about a tank of water. It is recommended to place a cup under the nozzle to collect water, and to empty this regularly. Descaling the machine without using a cup and regularly emptying it or the drip tray would result in overflowing water



Super Automatic
COFFEE MACHINE



ONE YEAR LIMITED WARRANTY

This product is warrantied to the original purchaser for one year from the date of purchase, against manufacturer's defects under normal use. Additionally, our top-notch customer service team can help you with any questions or issues. For full details, scan the QR Code.

JUST A FEW STEPS AWAY:



Open the Camera
App on your phone



Point to the code and
focus your camera
on the code



Click the notification
that pops up*

*If you're having trouble download a QR Code App go to this link:
<https://www.zulaykitchen.com/pages/magia-coffee-machine-warranty>

HOW-TO VIDEOS

We have made How-To Videos to help you become more familiar with your Magia Super Automatic Coffee Machine. This series of videos cover the different functions of the coffee machine, maintenance actions, troubleshooting and more.

Scan the QR code above or go to
<https://www.zulaykitchen.com/pages/magia-coffee-machine-manual>



WE ARE HERE FOR YOU

If you have any questions about the unit or its operation, please call or email customer service.

☎ +1(727)386-9117 🕒 Mon-Fri 9:00 AM - 5:00 PM (EST)

✉ support@zulay.net

INDEX

A

Accessories 5
Automatic Cleaning Settings 21, 24
Auto shut off 22

B

Bean Hopper 3, 11-12, 17
Bean grinder 12
Bean/change to grounds 12, 17
Black Screen 22
Blockage from Mineral Deposits. 25, 27
Brew Group 4, 13
Brew Group Removing/Replacing 13
Brew Group, Cleaning 8, 21, 24-25

C

Cleaning Brush 5, 24
Cleaning/Automatic 9, 21, 24
Cleaning/Brew Group 8, 21, 24-25
Cleaning/Milk System 21, 24
Cleaning, monthly 25
Cleaning, weekly 24
Coffee Beans 12, 17, 26
Coffee Beans Damp 26
Coffee Grounds 17, 26
Coffee Recipes 16
Coffee temperature 19, 26
Coffee Waste Bin 4, 9
Coffee Weak 26
Cup Warmer 3, 14
Customer Service 29
Customize/Coffee 18
Customize/Profile 20

D

Descaling 8, 9, 25, 27
Download Magia manual 28
Drip Tray 3, 10, 24, 27
Dust Pan 10, 25

E

Energy Saving 22

G

Grounds/change to beans 7, 17

H

Heating Element 26
Hot milk foam 18
Hot water 18
How-To Video 28

I

Intro Screen 7, 11

K

Keyboard 20

M

Main Coffee Menu 7, 19
Main Features 6
Milk System, Installing 12
Milk Tube 12, 27, 24
Milk Tube Brush 5
Machine not turning on 26
Maintenance 24

N

Noise from Coffee Grinder 27

O

Organic Growth 22
Overflow 27
One year warranty 28

P

Parts Of The Machine 3-4
Profiles 7, 20
Personal Profiles 20
Poor quality Milk 27
Power off/on 11

Q

QR code 28

S

Safety Information 1-2
Self Cleaning 9, 21, 24
Setting Up The Unit 10
Slow dripping 28
Sound 23
System Descale Warning 22

T

Temperature, not hot enough 26
Temperature, adjusting 19
Troubleshooting 26-27

U

User Name 20

W

Warming Up Cup 3
Water Hardness Test Paper 5
Water is not hot 26
Water Tank 3
Weak coffee 26
Weekly Cleaning 24