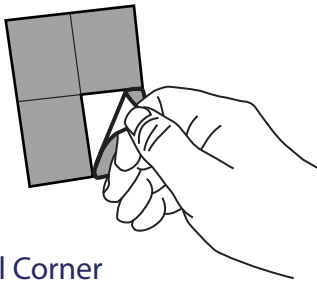
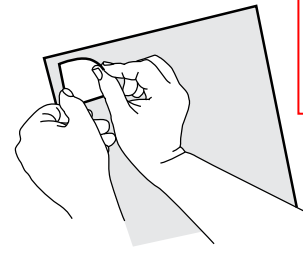


How to install tiles



1. Peel Corner

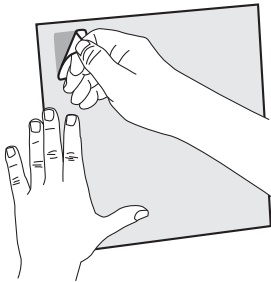
Peel one of the adhesive tabs from the branded liner.



Ensure the adhesive tabs are firmly pressed and rubbed onto the tile to ensure proper adhesion

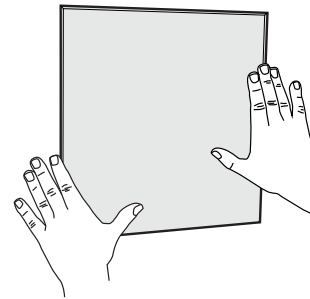
2. Place and Press

Firmly press and rub the whole tab, including the edges, onto the back side of the tile. Place the tabs according to the tab layout below.



3. Remove Liner

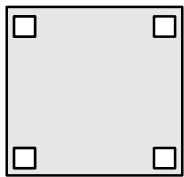
Remove the backing, leaving the adhesive. If the adhesive removes with the tab as you lift, then press the corner again to re-attach the adhesive to the tile.



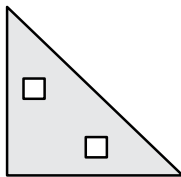
4. Line Up and Press

Using your phone or a level, place the tile against the surface. Apply pressure against the tile for up to 30 seconds for the best results.

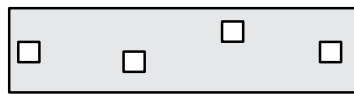
Tab Layouts



12" Square



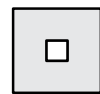
Triangle



Shi lap



Half Shi lap

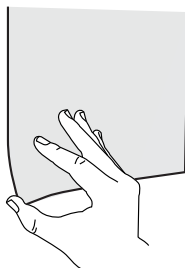


6" Quarter



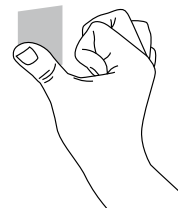
Pixel

How to remove tiles



1. Pull Up Corner

Starting with one corner, peel the tile from the wall, leaving the adhesive behind.



2. Roll Off Adhesive

Roll your thumb across the adhesive to peel it off the wall.